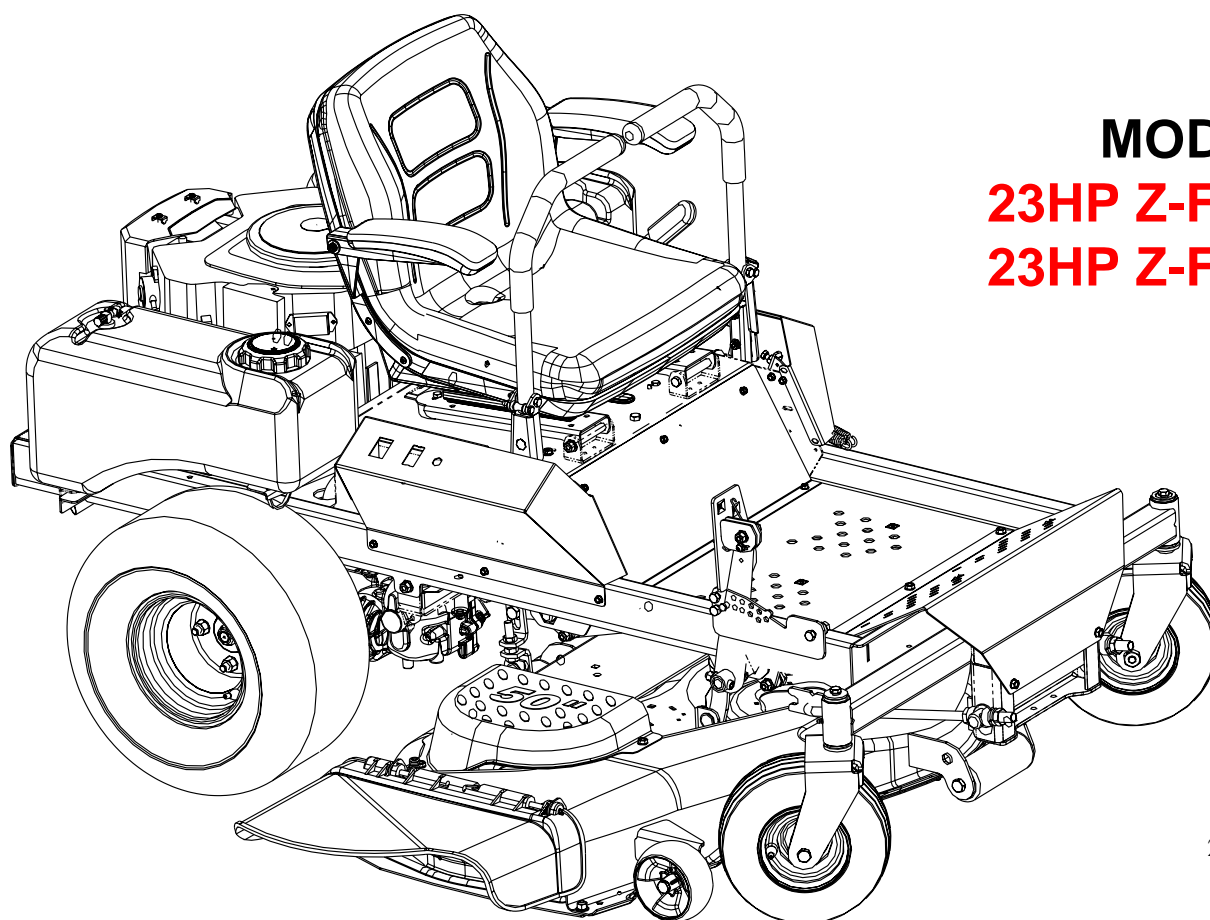




# Hydrostatic Zero-Turn Residential Riding Mower

*Turf Equipment*



## MODEL

**23HP Z-Force 50**  
**23HP Z-Force 60**

Model Shown is a  
23HP Z-Force 50

## ILLUSTRATED PARTS LIST

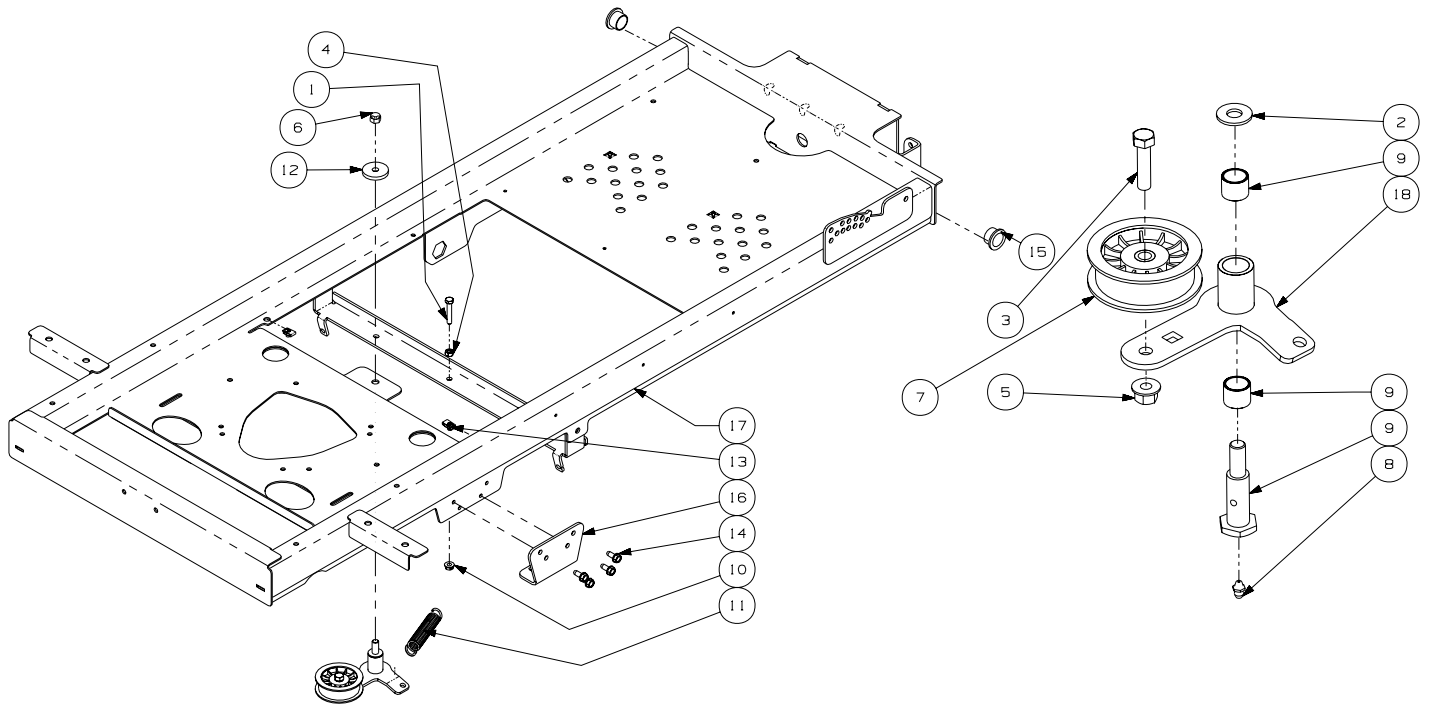
---

# TABLE OF CONTENTS

---

Frame Assembly .....	3
50" Formed Cutter Deck .....	4 and 5
50" Deck Spindle Assembly .....	6 and 7
60" Formed Cutter Deck .....	8 and 9
60" Deck Spindle Assembly .....	10 and 11
Control Assembly .....	12 and 13
50" Front Caster & Tire Assembly .....	14
60" Front Caster & Tire Assembly .....	15
Steering Assembly .....	16
Drivetrain Assembly .....	17
23 HP Kohler Engine Assembly .....	18
23 HP Kawasaki Engine Assembly .....	19
Electrical Assembly Kohler .....	20
Electrical Assembly Kawasaki .....	21
Seat Assembly .....	22
Lift Assembly .....	23
Decal Map .....	24 and 25

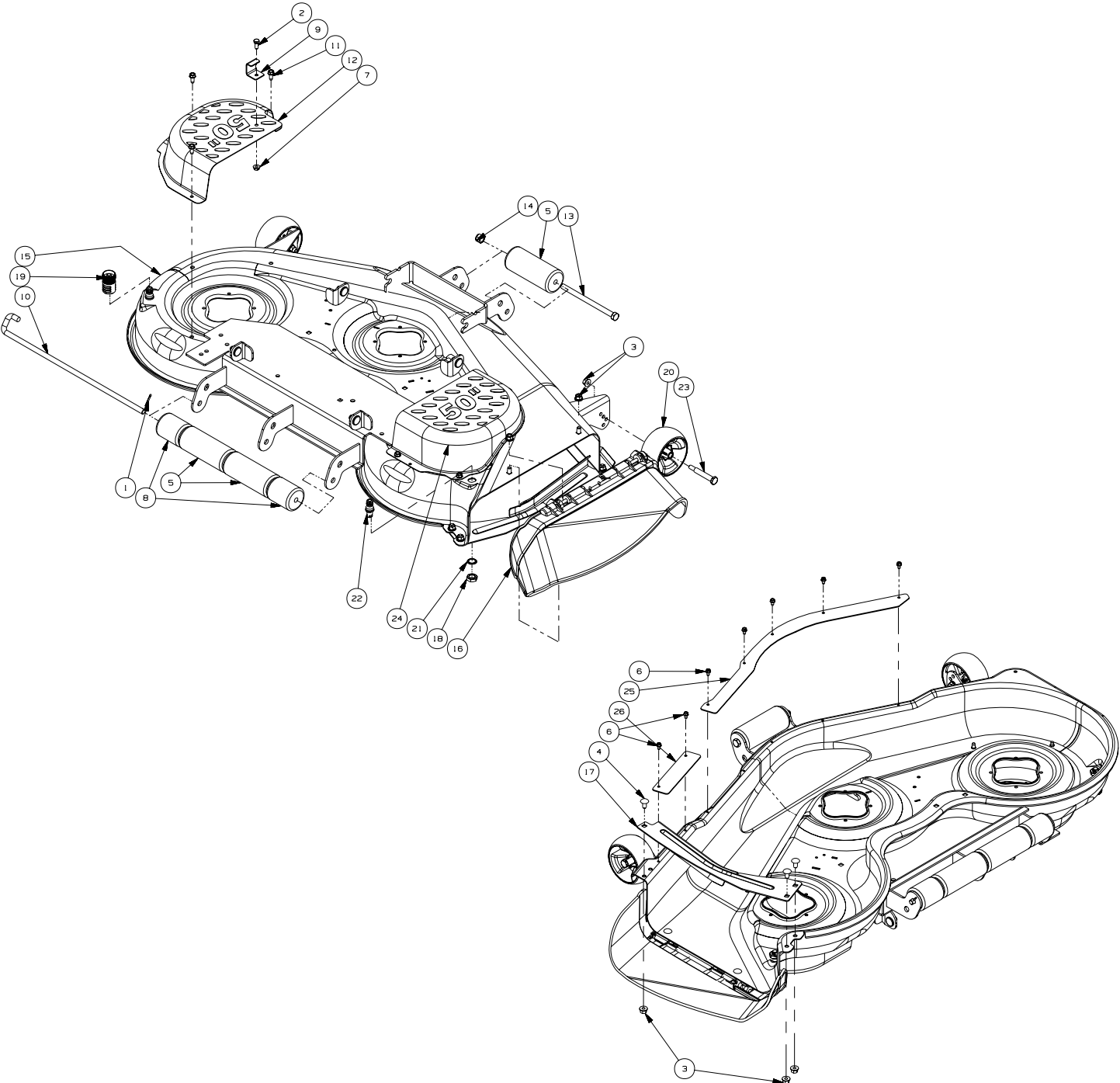
## Frame Assembly- Figure 1 and Parts List



GD: 02003765-11/06/06

Ref. No.	Part No.	Description	Qty.
1	00006129	Hex Cap Screw, 5/16-18 x 1-3/4	1
2	00006168	Flat Washer, 3/8 zinc	1
3	00011438	Hex Cap Screw, 3/8-16 x 1-1/2	1
4	00012166	Hex Nut, 5/16-18	1
5	00022560	Hex Nut, 3/8-16 Flange Lock	1
6	00027279	Nylock Nut, 7/16-14	1
7	00030782	Flat Idler Pulley w/ adaptor	1
8	00060078	Grease Fitting, 1/4-28 x 3/16	1
9	01000505	Shoulder Bolt	1
10	01000635	Nut, 5/16-18, Hexflange Lock	9
11	01002874	Extension Spring, .865 OD x 4.68 lg	1
12	01003269	Flat Washer, 7/16 ID x 1.75 OD	1
13	01008539	U-Nut, 1/4-20	2
14	01008620	Self Tapping Screw 5/16-18 x .750	8
15	02002628	Bronze Bushing, .875 ID x 1.50 OD	2
16	02002670	Transmission Mounting Bracket	2
17	02002672	Frame Assembly Weldment	1
18	02003641	Idler Arm Assembly includes:	1
	01000308	Bearing Sleeve	2

# 50" Formed Cutter Deck - Figure 2



Deck Shown Upside Down

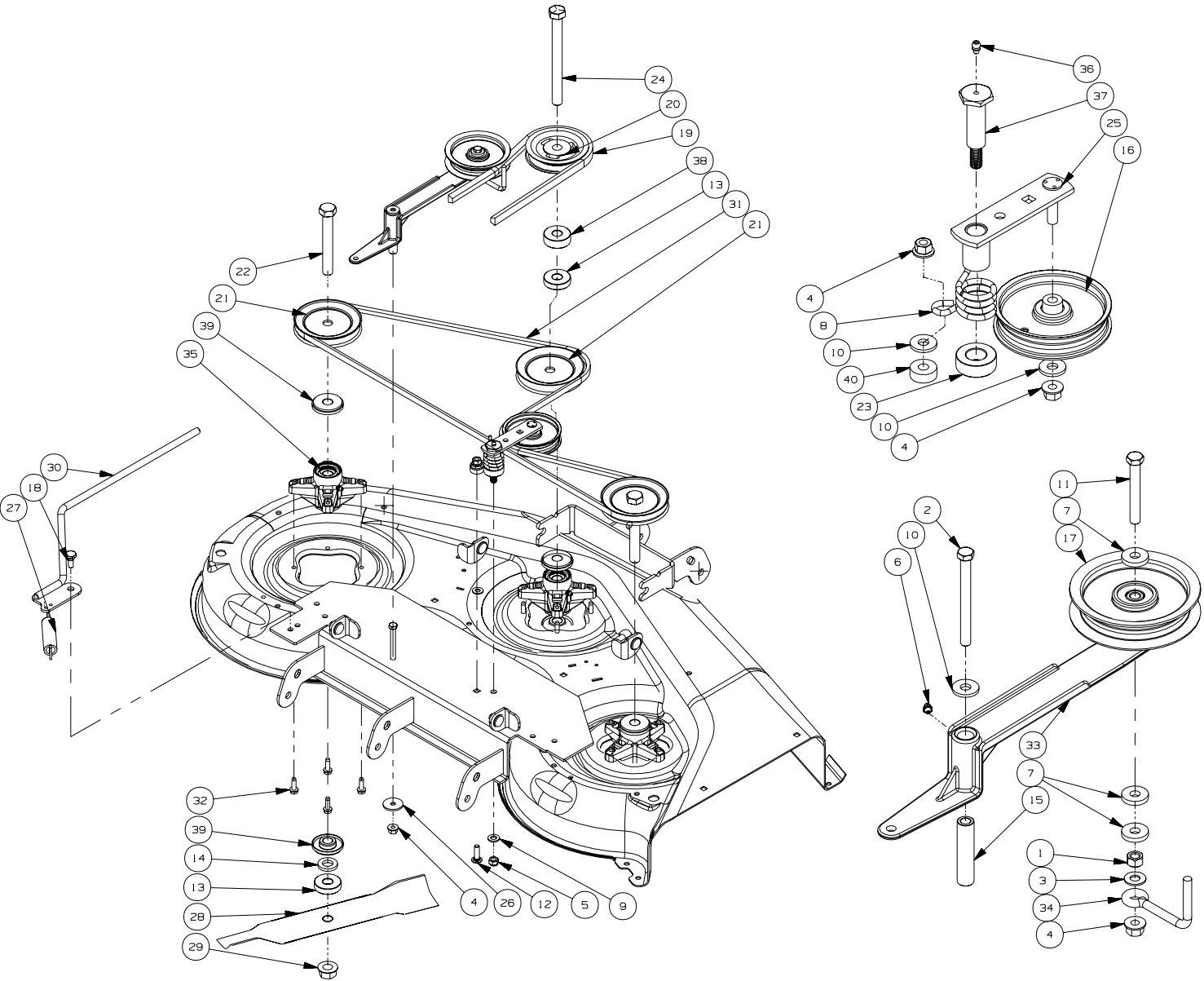
GD: 02002795-10/25/06

## 50" Formed Cutter Deck - Parts List for Figure 2

---

Ref. No.	Part No.	Description	Qty.
1	00003107	Cotter Pin .125 Dia x 1.0	1
2	00013406	Hex Cap Screw 5/16-18 x .75	1
3	00022560	Hex Nut, 3/8-16, Flange Lock	7
4	01000372	Carriage Bolt, 3/8-16 x .75	5
5	01000385	Front Roller	3
6	01000628	Screw, 1/4-20 x 1/2	7
7	01000635	Lock Nut 5/16-18 Hex Flange	1
8	01001169	Grass Catcher Roller	2
9	01004109	Tension Rod Stop Bracket	1
10	01004751	Rod, Rear Roller	1
11	01008620	Self Tapping Screw 5/16-18 x .750	6
12	02000465	Belt Cover Left Hand	1
13	02002154	Hex Cap Screw, 1/2-20 x 7.25	1
14	02002299	Nut, 1/2-20, Lock	1
15	02002988	Deck Assembly 50"	1
16	631-0407A	Chute Assembly	1
17	02000831	Finger Guard	1
18	712-0641	Hex Nut, M16-1.5	2
19	721-04041	Water Nozzle Adaptor	1
20	734-04155	Deck Wheel, 5.00 Dia.	2
21	736-0760	Lock Washer, 17 x 23.8 x 1.95	2
22	737-04003B	Deck Water Nozzle	2
23	738-3056	Shoulder Screw .498 x 1.53	2
24	02000467	Belt Cover Right Hand	1
25	02000430	Skirt, Center, 50"	1
26	02000429	Skirt, Right Hand, 50"	1

# 50" Deck Spindle Assembly - Figure 3

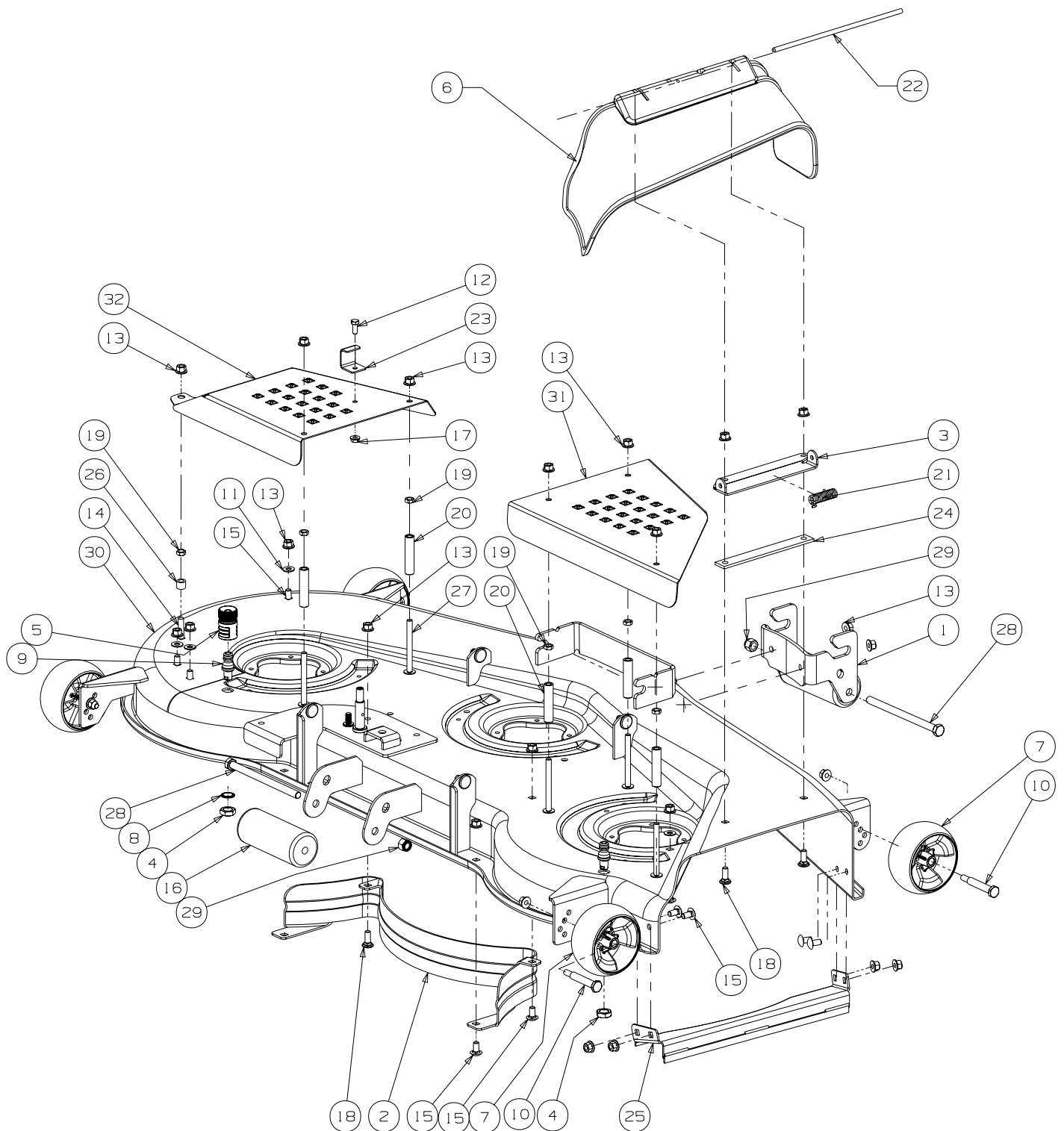


GD: 02002792-11/30/06

## 50" Deck Spindle Assembly - Parts List for Figure 3

---

Ref. No.	Part No.	Description	Qty.
1	00006131	Hex Nut, 3/8-16	1
2	00011925	Hex Cap Screw, 3/8-16, 4.00	1
3	00012158	Flat Washer, 3/8	1
4	00022560	Hex Nut, 3/8-16, Flange Lock	5
5	00027279	Nut 7/16-14, Nylock	1
6	00060078	Grease Fitting, 1/4-28 x 3/16	1
7	00083192	Idler Washer	3
8	01000387	Idler Spring	1
9	01000393	Flat Washer, .469 ID x .875 OD x .105	1
10	01000723	Flat Washer, .406 ID x 1.0 OD x .105	3
11	01001371	Hex Cap Screw 3/8-16 x 2.75	1
12	01002010	Carraige Screw, 3/8-16 x 1.25	1
13	01002564	Spacer, .76 ID x 2.00 OD x .477	4
14	01003123	Spacer .812 ID x .218	3
15	01003245	Spacer, .39 ID x .625 OD x 2.75	1
16	01004081	Flat Pulley	1
17	01004101	Idler Pulley, 4.06 OD	1
18	01004118	Shoulder Screw, .50 x .27 Lg., 3/8-16	1
19	01005011	V-Belt, Mower Drive	1
20	01005202	V-Pulley, 4.75 OD	1
21	01006535	V-Pulley, 5.0 OD	3
22	01006590	Hex Cap Screw 3/4-16 x 5.50	2
23	01008456	Spacer .760 ID x 1.5 OD	1
24	01008542	Hex Cap Screw, 3/4-16, 7.50	1
25	01008593	Idler Arm Assembly	1
26	01009253	Washer, 5/16-18	1
27	01009635	Extension Spring, .98 OD x 5.00	1
28	01010168	Hi-Lift Blade, 17.9	3
29	02000402	Nut, 3/4-16, Hex Flange	3
30	02000416	Spring Tension Rod Assembly	1
31	02000653	V-Belt, 1/2 x 90.9 LG	1
32	02000762	Self Tapping Screw 5/16-18 x 1.0	12
33	02001855	Idler Arm Assembly, Top	1
34	02002356	Belt Guide	1
35	618-04426	Spindle Assembly	3
36	737-3000	Grease Fitting	1
37	738-3172	Shoulder Screw .68 x 2.11	1
38	748-3020	Blade Spacer	1
39	748-3065A	Spindle Spacer	6
40	750-3119	Spacer .406 ID x 1.0 OD	1



GD: 02003471-11/29/06

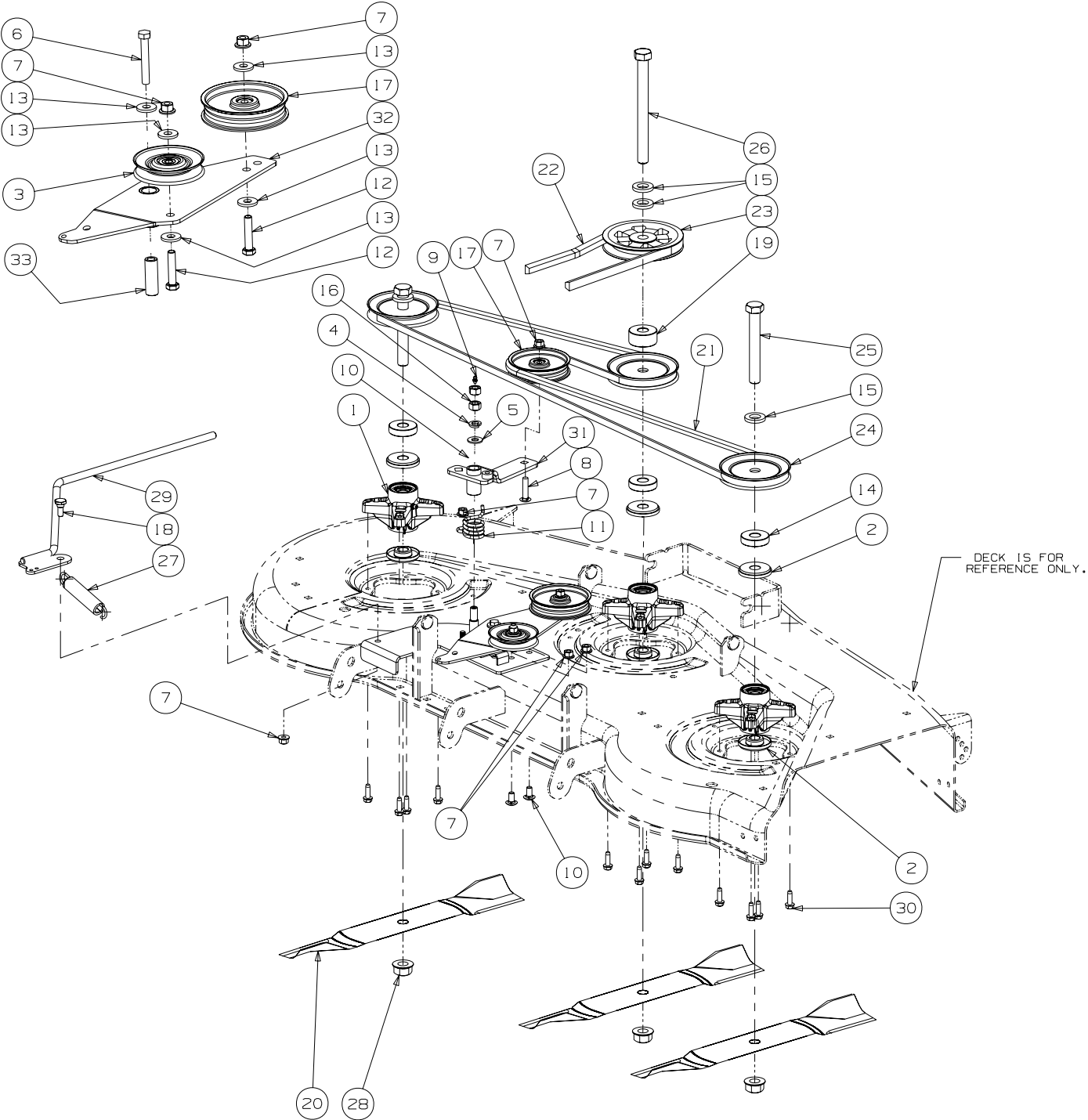


## 60" Formed Cutter Deck - Parts List for Figure 4

---

Ref. No.	Part No.	Description	Qty.
1	01004857	Chute Deflector Bracket	1
2	01004856	Deck Baffle	1
3	01004852	Front Roller Bracket	1
4	712-0641	Hex Nut, M16-1.5	2
5	721-04041	Water Nozzle Adaptor	1
6	731-3257	Chute Deflector	1
7	734-04155	Deck Wheel, 5.00 Dia.	4
8	736-0760	Lock Washer, 17 x 23.8 x 1.9	2
9	737-04003B	Nozzle, Deck Water	2
10	738-3056	Shoulder Screw .498 x 1.53	4
11	00012158	Flat Washer, 3/8	9
12	00013406	Hex Cap Screw 5/16-18 x .75	1
13	00022560	Hex Nut, 3/8-16, Flange Lock	25
14	00030276	Hex Carriage Screw, 3/8-16, 1.50	1
15	01000372	Carriage Bolt 3/8-16 x .75	12
16	01000385	Front Roller	2
17	01000635	Lock Nut 5/16-18 Hex Flange	1
18	01000643	Carriage Bolt, 3/8-16 x 1.00	3
19	01002511	Nut, 3/8-16, Jam	6
20	01003245	Spacer, .39 ID x .625 OD x 2.75	5
21	01003253	Torsion Spring	1
22	01003254	Chute Deflector Rod	1
23	01004109	Bracket Stop Tension Rod	1
24	01004864	Strip Spacer, 0.1875 Thick	1
25	01005594	Finger Guard Assembly	1
26	01007312	Spacer, .625 OD x .385 ID x 1/2	1
27	01008049	Carriage Bolt, 3/8-16 x 4.00	5
28	02002154	Hex Cap Screw, 1/2-20 x 7.25	2
29	02002299	Nut, 1/2-20, Lock	2
30	02003090	Deck Assembly 60"	1
31	02003076	Belt Cover 60 Right Hand	1
32	02003078	Belt Cover 60 Left Hand	1

# 60" Deck Spindle Assembly - Figure 5

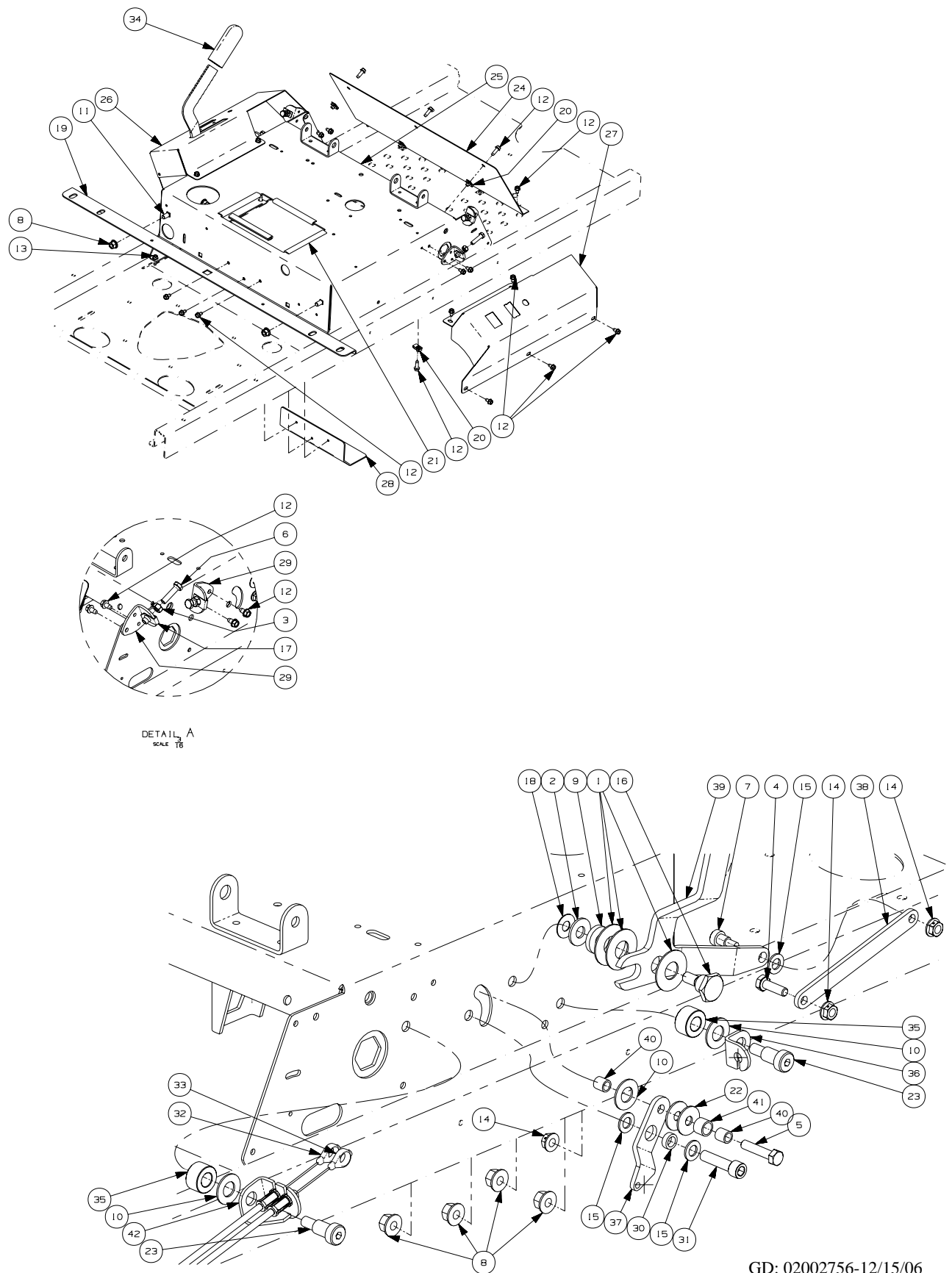


GD: 02003470-11/29/06

## 60" Deck Spindle Assembly - Parts List for Figure 5

Ref. No.	Part No.	Description	Qty.
1	618-04426	Spindle Assembly	3
2	748-3065A	Spindle Spacer	6
3	756-0399	V-Pulley, 3.50 OD	1
4	00010734	Lock Washer, 1/2	1
5	00010958	Washer, 1/2 Zinc	1
6	00011861	Hex Cap Screw, 3/8-16 x 2.50	1
7	00022560	Hex Nut, 3/8-16, Flange Lock	7
8	00030276	Hex Carriage Screw, 3/8-16, 1.50	1
9	00060078	Grease Fitting, 1/4-28 x 3/16	2
10	01000372	Carriage Bolt 3/8-16 x .75	2
11	01000387	Torsion Idler Spring	1
12	01000512	Hex Cap Screw, 3/8-16 x 1.750	2
13	01000723	Flat Washer, .406 ID, 1.0 OD, .105	5
14	01002564	Spacer, .76 ID x 2.00 OD x .477	3
15	01003123	Spacer .812 ID x .218	4
16	01003607	Hex Nut, 1/2-20	2
17	01004081	Flat Pulley	2
18	01004118	Shoulder Screw, .50x.27 Lg., 3/8-16	1
19	01004415	Spacer, .760 ID x 2.000 OD x 1.1	1
20	01004719	Hi-Lift Blade, 20.5, .756 ID	3
21	01004752	V Belt, A Section x 120.0	1
22	01005011	V Belt, B Section x 83.2	1
23	01005203	V-Pulley, 5.774 OD	1
24	01006535	Pulley, A Sect x 4.90	3
25	01006590	Spindle Bolt 3/4-16 x 5.50	2
26	01008542	Hex Cap Screw, 3/4-16, 7.50	1
27	01009635	Extension Spring, .98 OD x 5.00	1
28	02000402	Flange Hex Nut, 3/4-16	3
29	02000416	Spring Tension Rod Assembly	1
30	02000762	Self Tapping Screw 5/16-18 x 1.00	12
31	02003571	Idler Arm Assembly, Deck Spindle includes:	1
	01000308	Bearing	2
32	02003795	Idler Arm Assembly, Double, includes	1
	01000308	Bearing	2
33	02003640	Spacer, .39 ID x .625 OD x 1.875	1

# Control Assembly - Figure 6

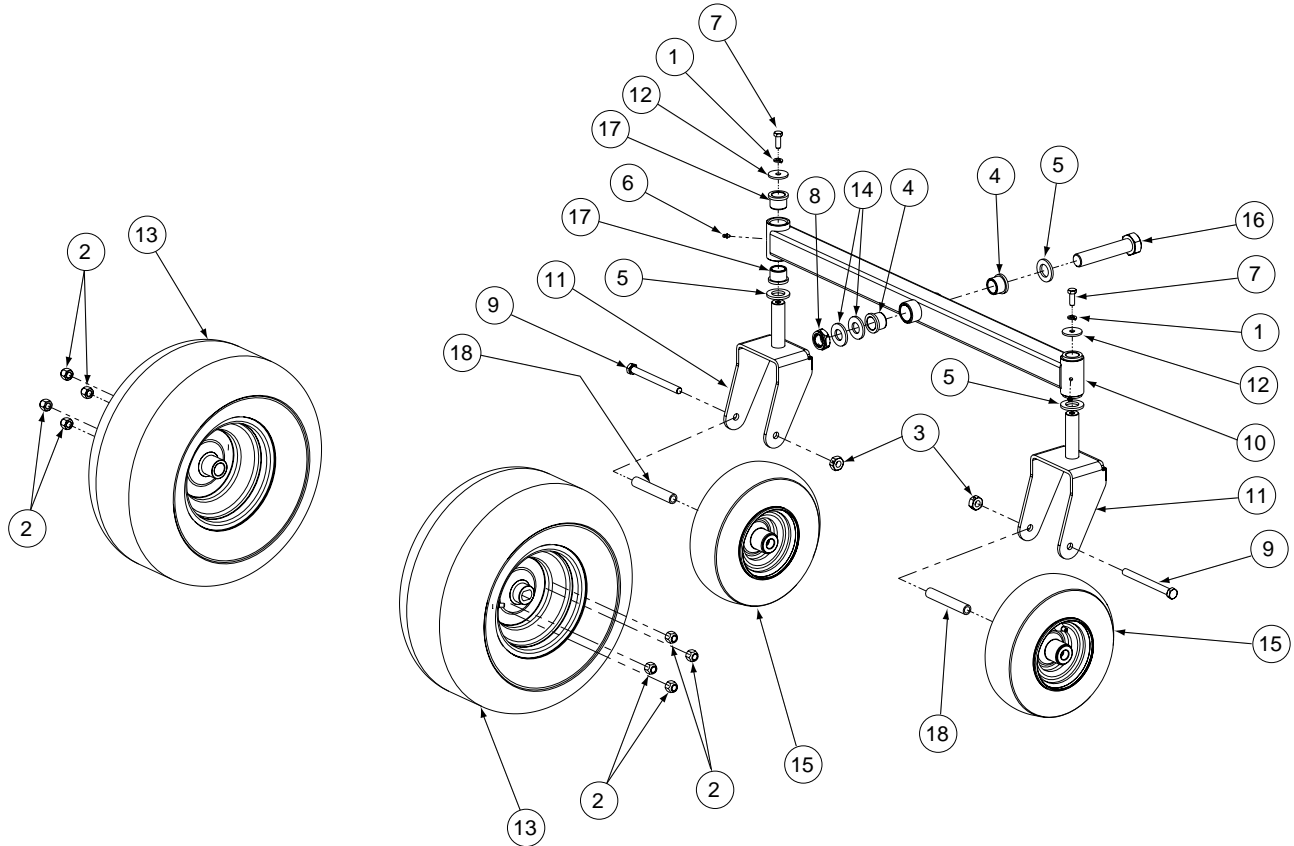


## Control Assembly - Parts List for Figure 6

---

Ref. No.	Part No.	Description	Qty.
1	00002766	Washer, 1.50 x .625 x .05	3
2	00006168	Washer, 3/8	1
3	00012166	Hex Nut, 5/16-18	4
4	00012180	Hex Head Cap Screw, 5/16-18 x 1.00	1
5	00012382	Hex Cap Screw, 5/16-18 x 1-1/2	1
6	00013116	HHCS, 5/16-18 x 1-1/4	4
7	00013733	Shoulder Bolt, 3/8 x 3/8	1
8	00022560	Hex Nut, 3/8-16 Flange Lock	6
9	00083192	Idler Washer	1
10	01000101	Slide Washer	3
11	01000372	Carriage Bolt, 3/8-16	2
12	01000628	Screw, 1/4-20 x 1/2	24
13	01000629	Self Tapping Screw, 1/4-20 x .75	7
14	01000635	Nut, 5/16-18, Flange Lock	3
15	01002710	Washer, .375 x .738 x .063	3
16	01003535	Shoulder Screw, 0.625 OD x .437 Lg.	1
17	01003563	U-Nut, 5/16-18	4
18	01008225	Push Retainer	1
19	01008491	Front Tank Mounting Bracket	1
20	01008539	U-Nut, 1/4-20	5
21	01008572	Battery Edge Trim	4
22	01009937	Washer, 5/16 x 1.06	2
23	02002091	Shoulder Bolt, 1/2 x 3/4, 3/8-16	2
24	02002457	Front Panel	1
25	02002626	Control Housing Weldment	1
26	02002741	Left Hand Control Console	1
27	02002742	Right Hand Control Console	1
28	02002745	Battery Bracket	1
29	02002761	Forward/Reverse Stop Bracket	4
30	02002885	Spacer, .380 x .563 x .196	1
31	02003717	Sockethead Capscrew, 3/8-16 x 1.50	1
32	02003728	Left Hand Brake Cable	1
33	02003729	Right Hand Brake Cable	1
34	02003740	Parking Brake Grip	1
35	02003820	Spacer, .515 ID x 1.00 OD x .56	2
36	02003824	Brake Cable Mounting Bracket	1
37	02003825	Lockout Lever Plate	1
38	02003831	Brake Link Plate	1
39	02003833	Brake Handle	1
40	02003839	Spacer, .322 ID x .438 OD x .44	2
41	02003840	Spacer, .442 ID x .563 OD x .405	1
42	02003858	Brake Cable Mounting Bracket	1

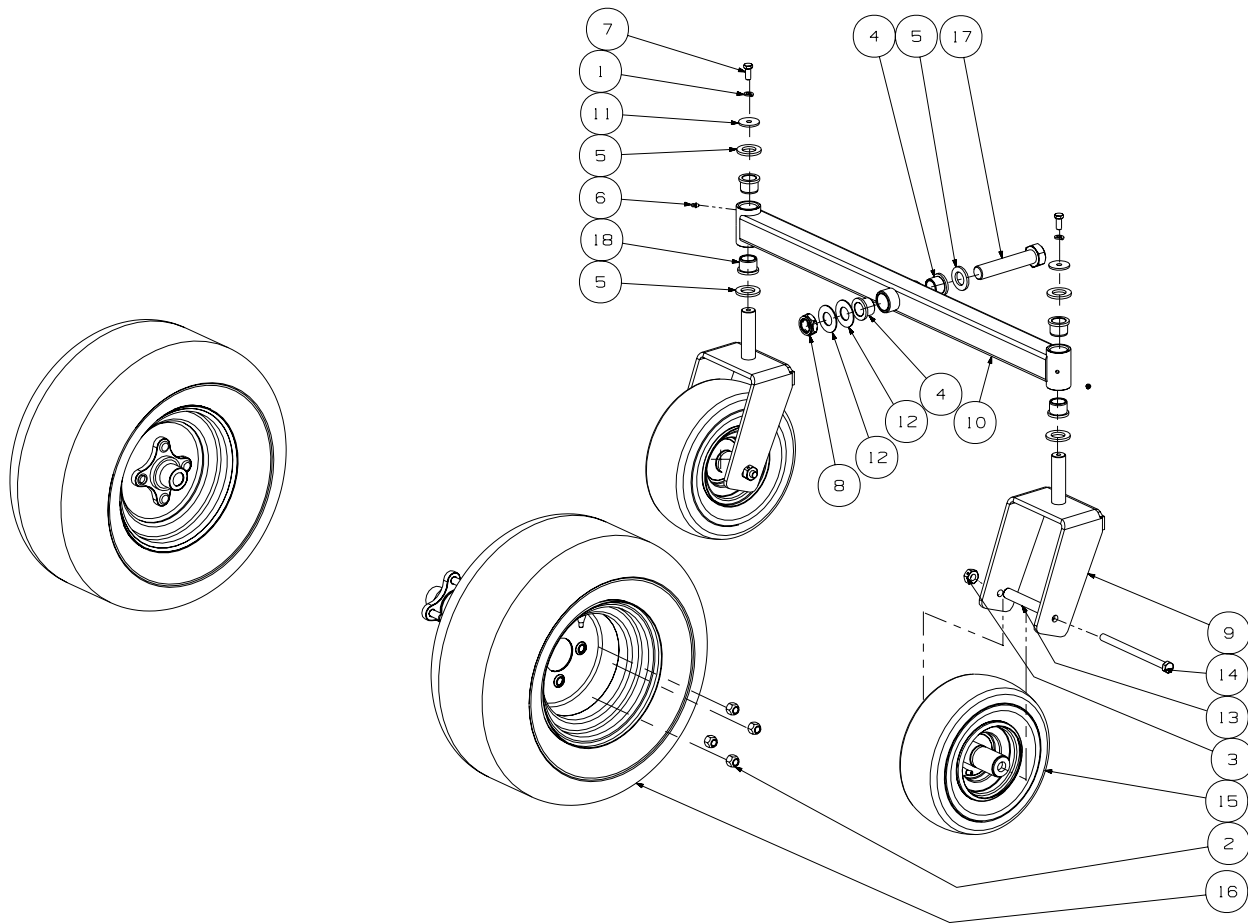
## 50" Front Caster & Tire Assembly - Figure 7 and Parts List



GD: 02003485-11/28/06

Ref. No.	Part No.	Description	Qty.
1	00012157	Lock Washer, 3/8 Zinc	2
2	00012187	Lug Nut, 1/2-20	8
3	00023287	Nut, 1/2-20, Center Lock	2
4	00023793	Flange Bearing, 1.013 ID	2
5	00023822	Washer Special	3
6	00060078	Grease Fitting, 1/4-28 x 3/16	2
7	01000368	Hex Cap Screw, 3/8-16 x .88	2
8	01000678	Nut Jam, 1.0-14, Nylon Insert	1
9	01000745	Hex Cap Screw, 1/2-20 x 5.50	2
10	02000616	Front Axle Assembly	1
11	02000613	Castor Wheel Mounting Bracket	2
12	01009253	Flat Washer, .390 x 1.5 x .134	2
13	01009828	Wheel Assembly, 18 x 9.5	2
14	02000588	Flat Washer, 1.00 ID x 2.25 OD x .075	2
15	02003488	Wheel Assembly, 11 x 4 - 5, Beige	2
16	02003804	Hex Cap Screw, 1-14 x 5.5	1
17	731-0374	Flange Bearing, 1.0 ID	4
18	750-3197A	Wheel Spacer	2

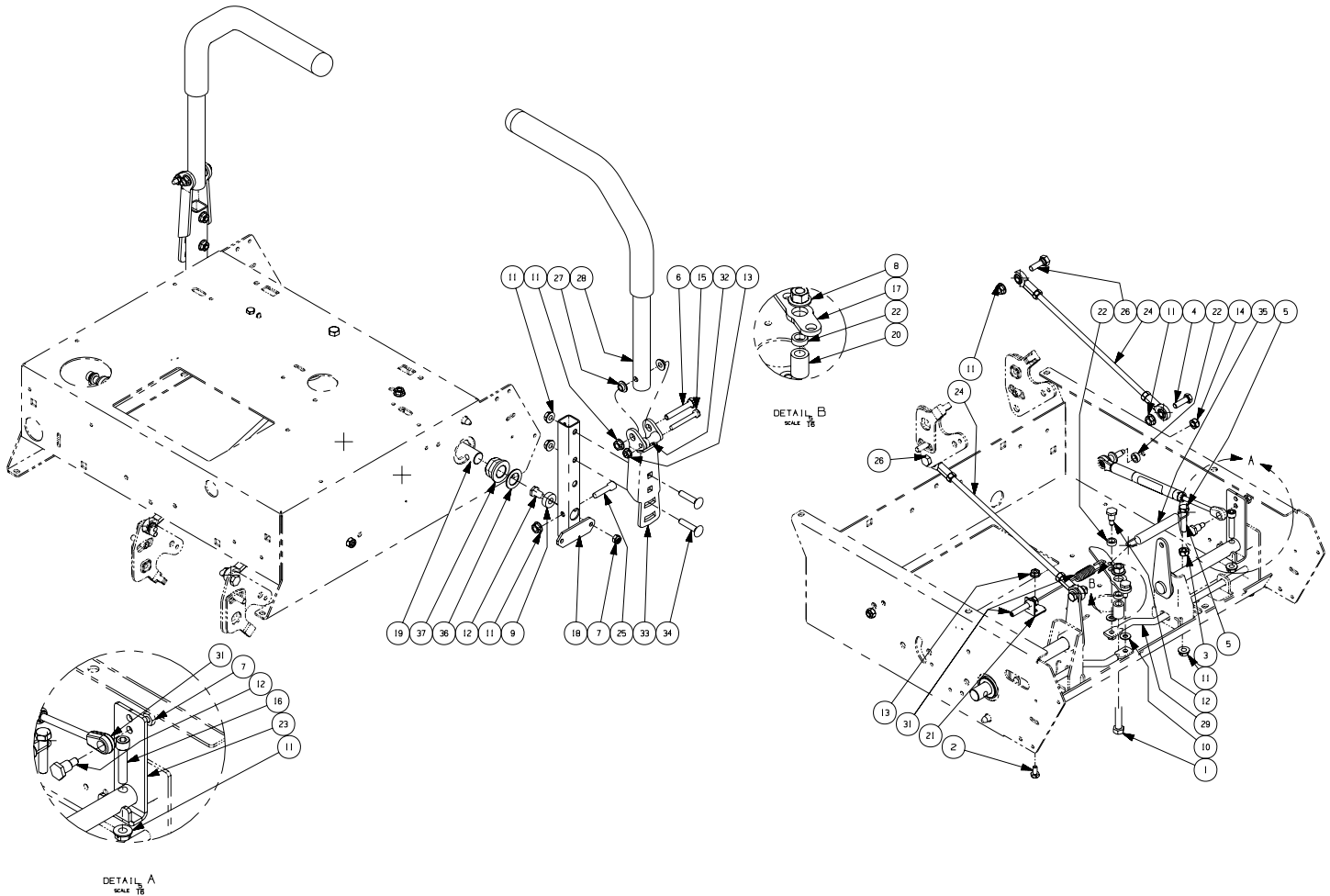
## 60" Front Caster & Tire Assembly - Figure 8 and Parts List



GD: 02003486-11/28/06

Ref. No.	Part No.	Description	Qty.
1	00012157	Lock Washer, 3/8 Zinc	2
2	00012187	Lug Nut, 1/2-20	8
3	00023287	Nut, 1/2-20, Center Lock	2
4	00023793	Flange Bearing, 1.013 ID	2
5	00023822	Washer Special	5
6	00060078	Grease Fitting, 1/4-28 x 3/16	2
7	01000368	Hex Cap Screw, 3/8-16 x .88	2
8	01000678	Nut Jam, 1.0-14, Nylon Insert	1
9	01007364	Castor Wheel Mounting Bracket	2
10	02000616	Front Axle Assembly	1
11	01009253	Flat Washer, .390 x 1.5 x .134	2
12	02000588	Flat Washer, 1.00 ID x 2.25 OD x .075	2
13	02002153	Spacer, .54 ID x .75 OD x 5.925 Lg	2
14	02002154	Hex Cap Screw, 1/2-20 x 7.25	2
15	02002956	Wheel Assembly 11 x 6.00 - 5, Beige	2
16	02003490	Wheel Assembly 20 x 10.00 - 10	2
17	02003804	Hex Cap Screw, 1-14 x 5.5	1
18	731-0374	Flange Bearing, 1.0 ID	4

# Steering Assembly -Figure 9 and Parts List

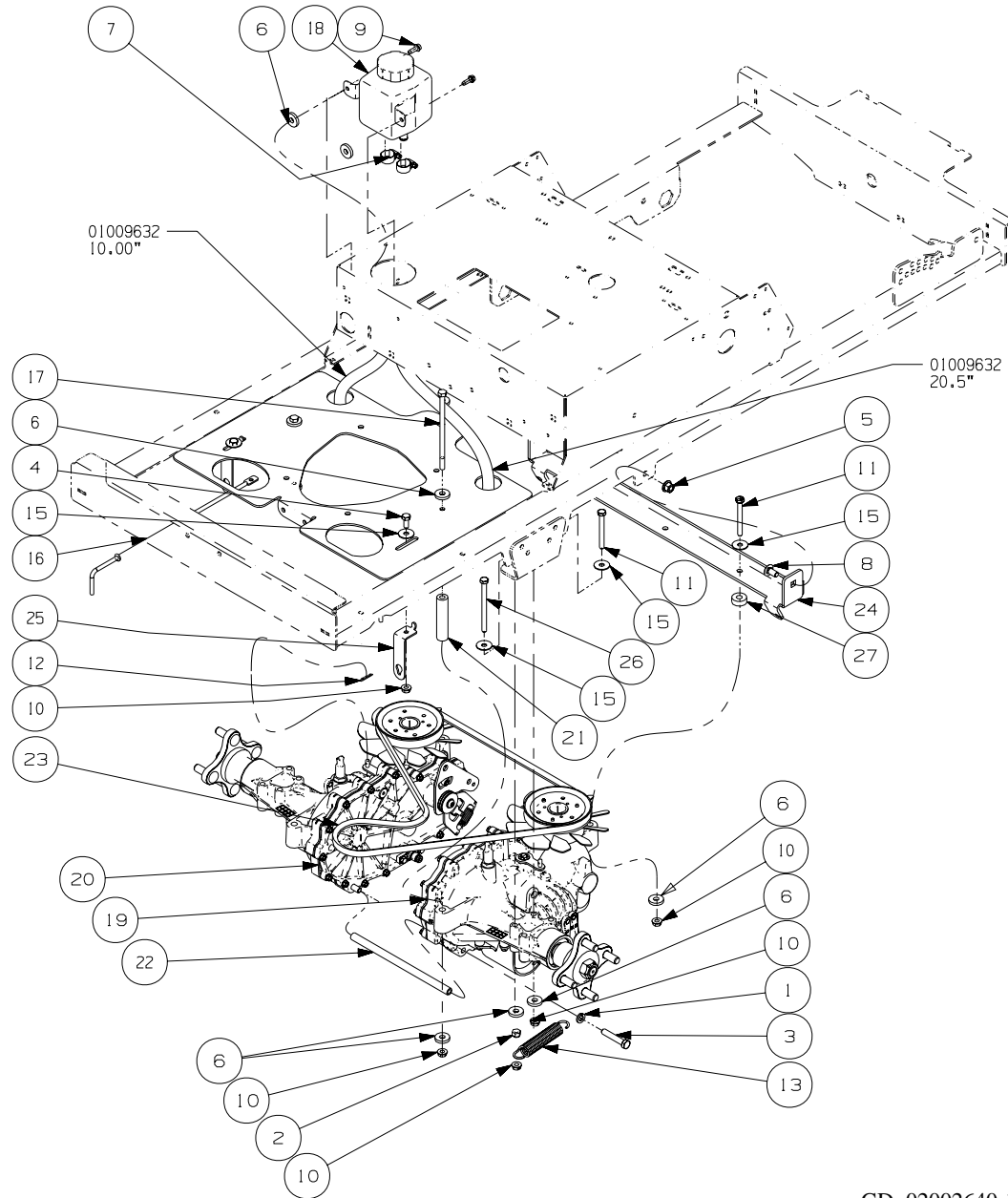


GD: 02002680-12/13/06

Ref. No.	Part No.	Description	Qty.	Ref. No.	Part No.	Description	Qty.
1	00011438	Hex Cap Screw, 3/8-16 x 1-1/2	1	21	02002864	Brake Cable Mounting Bracket	1
2	00012133	Hex Cap Screw, 1/4-20 x 1/2	1	22	02002885	Spacer, .380 x .563 x .196	5
3	00012166	Hex Nut, 5/16-18	1	23	02002908	Damper Mounting Bracket	2
4	00012180	Hex Head Cap Screw, 5/16-18 x 1.00	2	24	02002992	Steering Link Rod	2
5	00012382	Hex Cap Screw, 5/16-18 x 1-1/2	1	25	02002994	Socket Head Capscrew, 5/16-18 x 1.25	2
6	00013198	Hex Cap Screw, 5/16-18 x 2.00	2	26	02003041	Shoulder Bolt, .4375 x .1345 x 1.00	2
7	00014081	Nut, 1/4-28, SS, Nylon Insert	4	27	02003419	Bushing, .310 x .172 x .688 x .06	4
8	00022560	Nut, Flange Lock, 3/8-16	1	28	02003476	Lapbar Assembly includes:	2
9	00071691	Control Rod Spacer	2		02002954	Control Handle Pivot Tube	
10	01000600	Flat Washer, 1.4 x .630 x .0515	2		02002662	Grip, 1.0	
11	01000635	Nut, 5/16-18, Lock	15	29	02003560	Control Lock Rod	2
12	01001919	Shoulder Screw, 1/4-28	6	30	02003568	Control Cable Lock Out	1
13	01002766	Nut, 1/4-20, Hex Flange Lock Nut	4	31	02003622	Cylinder Return to Neutral	2
14	01003561	Nut, Hex, Center Lock, M8	2	32	02003644	Spacer, .25 ID x .38 OD x 1.13	2
15	01006898	Hex Cap Screw, 1/4-20 x 2.00	2	33	02003648	Lapbar Pivot Bracket	2
16	01008600	Capscrew, 5/16-18 x 1.50, Socket Head	2	34	710-0262	Carriage Bolt, 5/16-18 x 1.50	4
17	02002684	Brake Lever Plate	1	35	732-0470A	Extension SPring, .53 OD x 4.7	1
18	02002688	Pivot Bracket Weldment	2	36	736-0287	Flat Washer, .793 ID x 1.24 OD x .060	2
19	02002723	Steering Input Shaft Assembly	2	37	741-0598	Hex Flange Bearing, .752 ID	4
20	02002844	Spacer, .385 ID x .625 OD x .869	1				



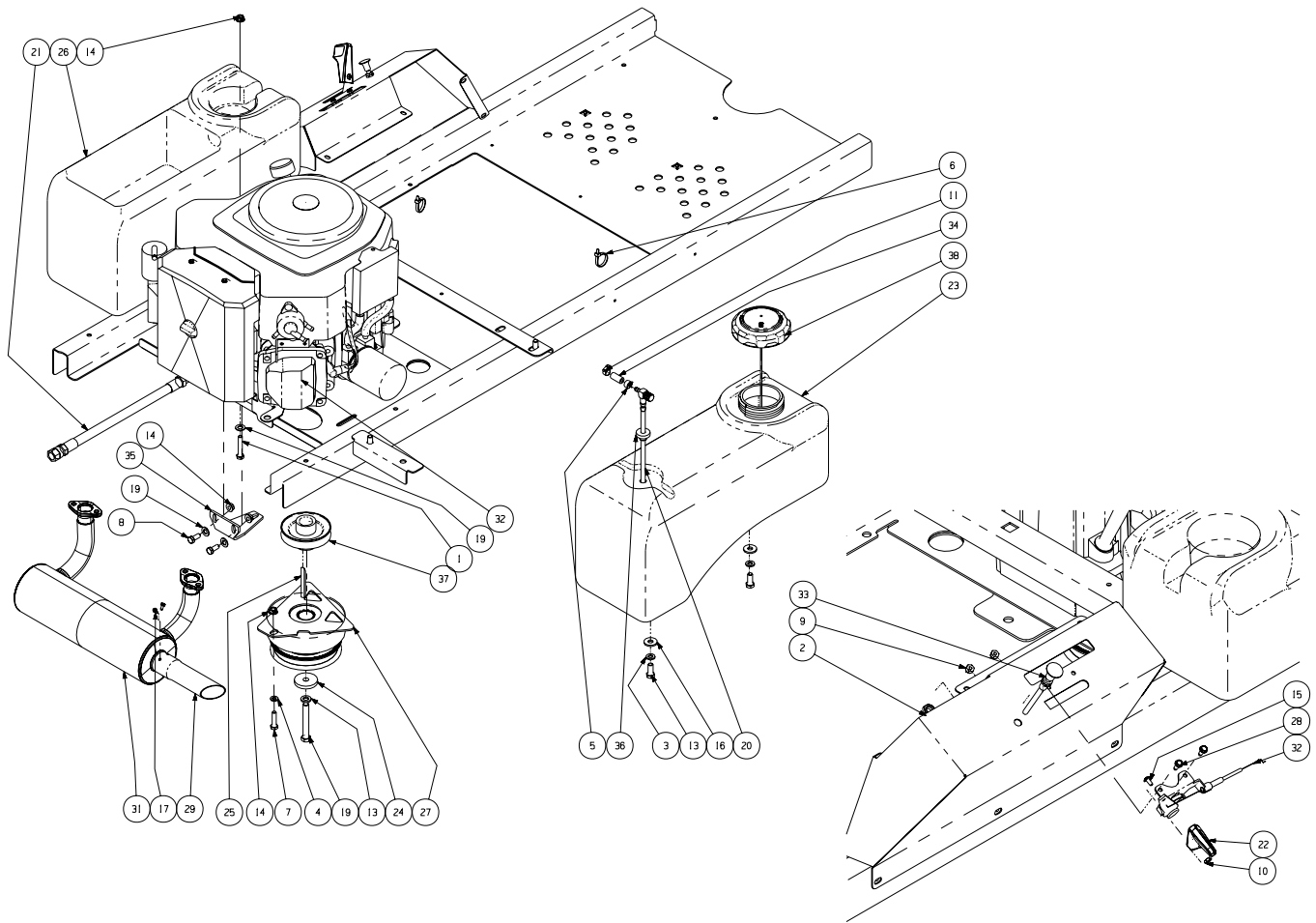
# Drive Train Assembly- Figure 10 and Parts List



GD: 02002640-12/13/06

Ref. No.	Part No.	Description	Qty.	Ref. No.	Part No.	Description	Qty.
1	00012157	Lock Washer, 3/8 Zinc	2	15	01009937	Washer, 5/16 x 1.06	8
2	00012165	Nylock Nut, 5/16-18	2	16	02001332	Pump Rod	2
3	00012172	Hex Cap Screw, 3/8-16 x 2.00	2	17	02001556	Hex Cap Screw, 5/16-18 x 6.00	2
4	00012179	Hex Cap Screw, 5/16-18 x 3/4	2	18	02001578	Hydraulic Tank	1
5	00022560	Nut, Flange Lock, 3/8-16	2	19	02002175	IZT Transmission, Right Hand	1
6	00083192	Idler Washer	12	20	02002176	IZT Transmission, Left Hand	1
7	01000216	Hose Clamp	4	21	02002646	Spacer, .375 ID x .75 OD x 3.30	2
8	01000372	Carriage Bolt, 3/8-16	2	22	02002647	Transmission Support Tube	1
9	01000629	Self Tapping Screw, 1/4-20 x .75	2	23	02002648	V-Belt, 58.4	1
10	01000635	Nut, Lock, HexFlange, 5/16-18	10	24	02002978	Transmission Front Mounting Bracket	1
11	01001972	Hex Cap Screw, 5/16-18 x 2.75	4	25	02002966	Neutral Bracket	2
12	01002771	Cotter Pin, .072 x 1.12 Lg	2	26	02002974	Bolt, 5/16-18 x 4.00	2
13	01002874	Extension Spring, .865 OD x 4.68 Long	2	27	750-3119	Spacer .406 ID x 1.0 OD	2
14	--	Fuel Hose, .50 ID x .75 OD (in inches)	30.5				

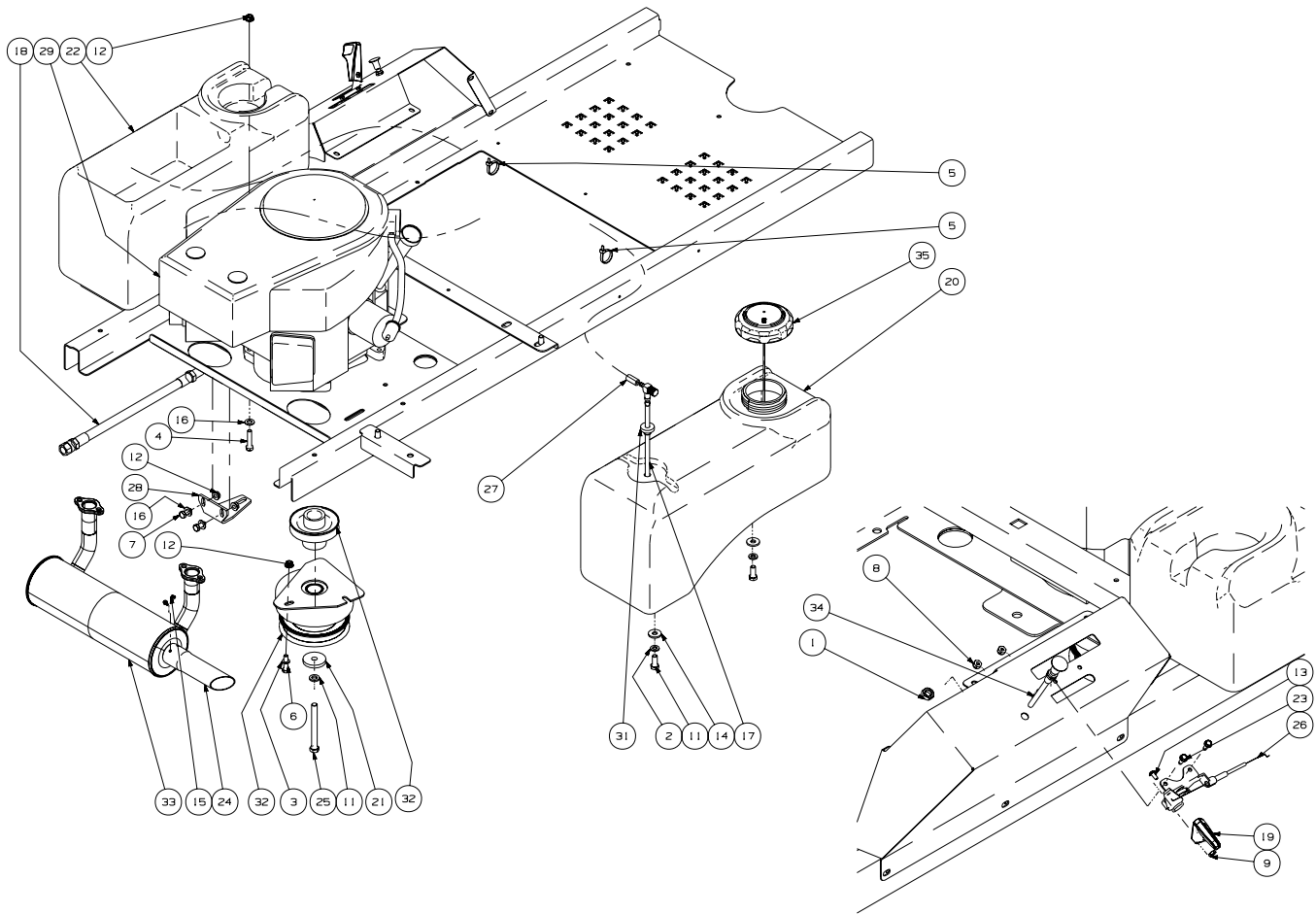
## 23HP Kohler Engine Assembly - Figure 11 and Parts List



GD: 02002759-12/13/06

Ref No	Part No.	Description	Qty.	Ref No	Part No.	Description	Qty.
1	00006129	Hex Head Cap Screw, 5/16-18 x 1-3/4	4	20	01003116	Fuel Pickup Fitting	1
2	00011453	Hex Jam Nut, 3/8-24	1	21	01003283	Oil Drain Extension Hose	1
3	00012157	Lock Washer, 3/8 Zinc	8	22	01004004	Throttle Control Knob	1
4	00012169	Flat Washer, 5/16	1	23	01004350	Fuel Tank	1
5	00012235	Clamp, Union	1	24	01005314	Flat Washer, 7/16 ID x 1.75 OD x .250	1
6	00012470	Cable Tie, 3/16 x .05 x 7.4	2	25	01007533	Key, 1/4 x 1/4 x 2.75	1
7	00013116	HHCS, 5/16-18 x 1-1/4	1	26	01008138	Utility Bin	1
8	00013406	Hex Cap Screw, 5/16-18 x .75	2	27	01008434	Ogura DX11 Electric Clutch	1
9	00014608	Lock Nut, Nylon Insert, 10-32	2	28	01008531	Screw, #10-32 x 0.500	2
10	00060056	Nut, w/ Star Washer	1	29	01008623	Exhaust Pipe	1
11	01000215	Hose Clam, 1/4-5/8, SS	1	30	02000427	23HP Kohler Engine	1
12	01000368	Hex Cap Screw, 3/8-16 x .88	8	31	02000456	Kohler Muffler	1
13	01000389	Lock Washer, 7/16	1	32	02000477	Throttle Control Cable	1
14	01000635	Lock Nut, Hex Flange, 5/16-18	7	33	02000478	Choke Cable	1
15	01000721	Machine Screw, 8-32 x .375	1	34	--	Hose, 1/4" Fuel Line	1
16	01000723	Flat Washer, .406 ID x 1.0 OD x .105	8	35	02001994	Clutch Retainer Assembly	1
17	01000811	Screw, 8-32 x .375, Hex Washer	2	36	02002253	Fuel Tank Grommet	1
18	01000813	Hex Cap Screw, 7/16-20 x 3.0	1	37	02003417	Transmission Drive Pulley	1
19	01002710	Washer, 3/8 x .738 x .063	6	38	02003809	Fuel Cap	1

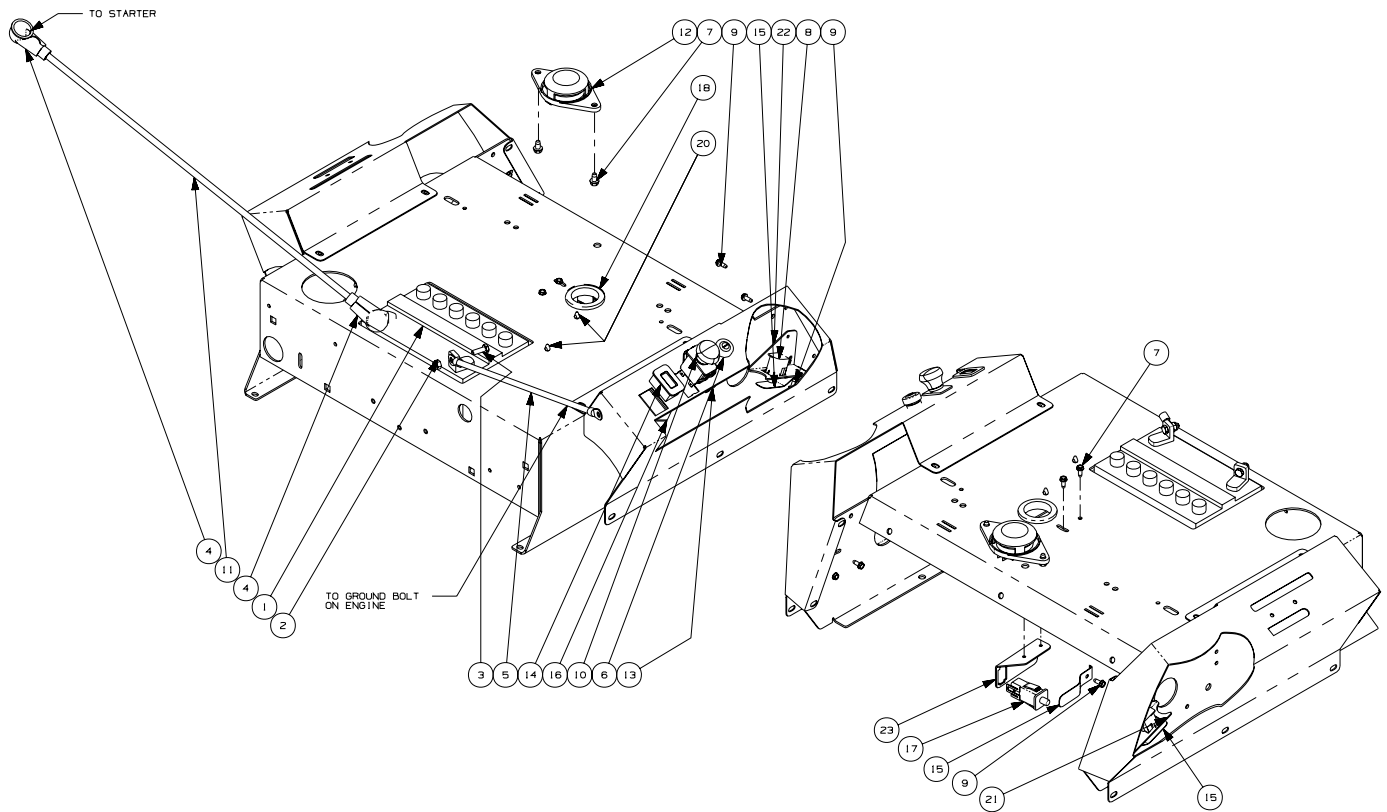
## 23HP Kawasaki Engine Assembly - Figure 12 and Parts List



GD: 02003769-12/13/06

Ref No	Part No.	Description	Qty.	Ref No	Part No.	Description	Qty.
1	00011453	Hex Jam Nut, 3/8-24	1	19	01004004	Throttle Control Knob	1
2	00012157	Lock Washer, 3/8 Zinc	8	20	01004350	Fuel Tank	1
3	00012169	Flat Washer, 5/16	1	21	01005314	Flat Washer, 7/16 ID x 1.75 OD x .250	1
4	00012382	Hex Cap Screw, 5/16-18 x 1-1/2	4	22	01008138	Utility Bin	1
5	00012470	Cable Tie, 3/16 x .05 x 7.4	2	23	01008531	Screw, #10-32 x 0.500	2
6	00013116	Hex Cap Screw, 5/16-18 x 1-1/4	1	24	01008623	Exhaust Pipe	1
7	00013406	Hex Cap Screw, 5/16-18 x .75	2	25	01008637	Hex Cap Screw, 7/16-20 x 4.0	1
8	00014608	Lock Nut, Nylon Insert, 10-32	2	26	02000477	Throttle Control Cable	1
9	00060056	Nut, w/ Star Washer	1	27	--	Hose, 1/4" Fuel Line	1
10	01000368	Hex Cap Screw, 3/8-16 x .88	8	28	02001994	Clutch Retainer Assembly	1
11	01000389	Lock Washer, 7/16	1	29	02001993	3HP Kawasaki Engine	1
12	01000635	Lock Nut, Hex Flange, 5/16-18	7	30	02002160	Electric Clutch	1
13	01000721	Machine Screw, 8-32 x .375	1	31	02002253	Fuel Tank Grommet	1
14	01000723	Flat Washer, .406 ID x 1.0 OD x .105	8	32	02003418	Transmission Drive Pulley	1
15	01000811	Screw, 8-32 x .375, Hex Washer	2	33	02003472	Kawasaki Muffler	1
16	01002710	Washer, 3/8 x .738 x .063	6	34	02003479	Choke Cable	1
17	01003116	Fuel Pickup Fitting	1	35	02003809	Fuel Cap	1
18	01003283	Oil Drain Extension Hose	1				

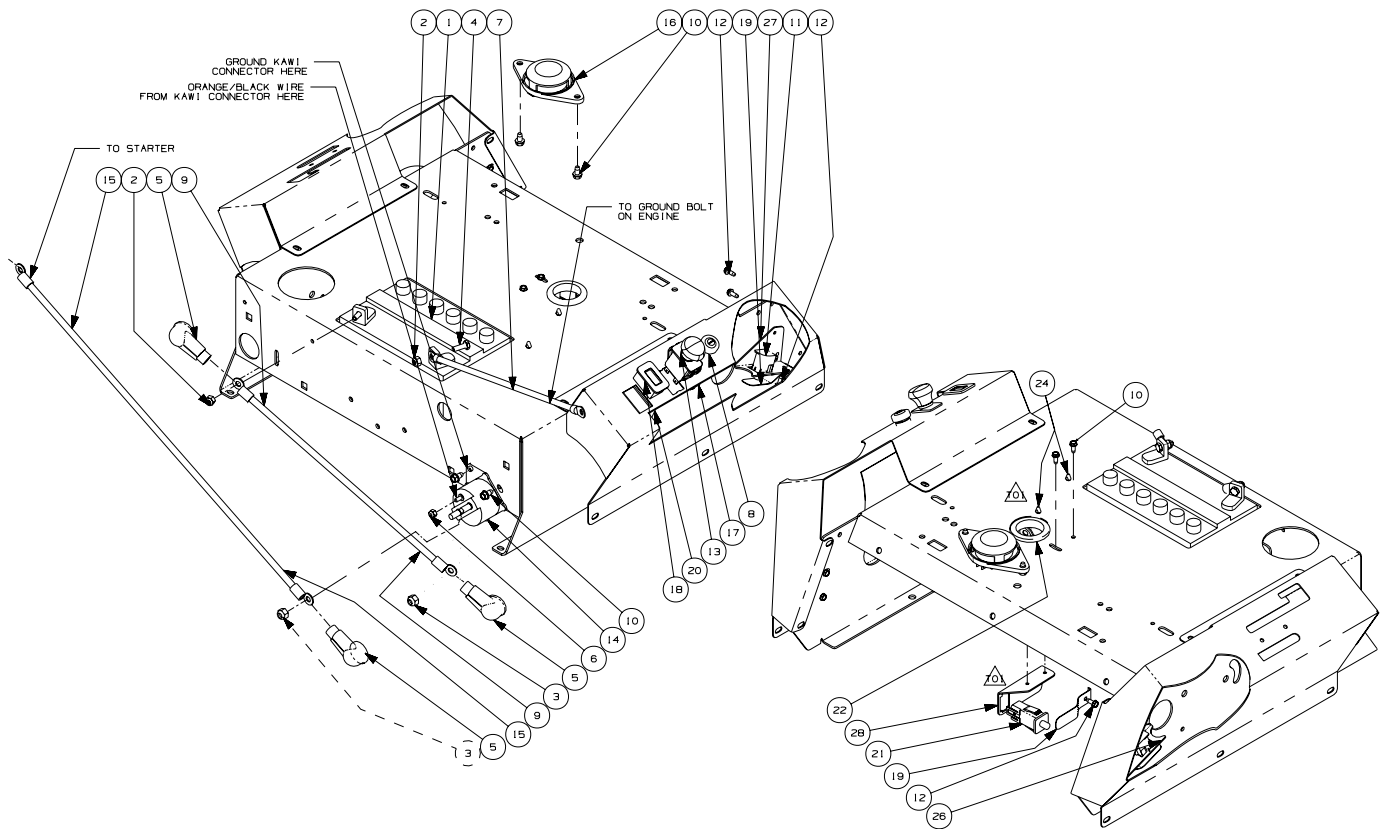
## Electrical Assembly Kohler - Figure 13 and Parts List



GD: 02002757-12/15/06

Ref. No.	Part No.	Description	Qty.	Ref. No.	Part No.	Description	Qty.
1	00012032	Battery, 12V 225CCA 30Min	1	13	01003581	Switch, Ignition, 6 Pin	1
2	00012152	Lock Nut, Nylon Insert, 1/4-20	2	14	01007597	Hour Meter	1
3	00013131	Hex Cap Screw, 1/4-20 x .75	2	15	01008042	Safety Switch Retainer Spring	3
4	00013258	Boot, 1" OD Rubber Battery-PST Red	2	16	01009905	PTO Switch Bracket	1
5	00024233	Cable, Battery, Black, 17"	1	17	02000024	Switch, Safety N.O./N.C.	1
6	00032097	Nut, 5/8-32, w/Cap	1	18	02001134	Gromment, 1.5 ID x 2.13 OD	1
7	01000628	Self Tapping Screw, 1/4-20 x 1/2	4	19	02002990	Harness Assembly (not shown)	1
8	01001717	Normally Closed Safety Switch	2	20	02003038	Electrical Conduit Clip, 3/8	2
9	01001864	Self Tapping Screw, 10-32 x 1/2	7	21	02003477	Bracket, Safety Switch, Left Hand	1
10	01002111	Electric PTO Switch	1	22	02003478	Bracket, Safety Switch, Right Hand	1
11	01002252	Cable, Battery, Red, 24"	1	23	02003567	Brake Switch Mounting Bracket	1
12	01003277	Normally Closed Seat Switch	1				

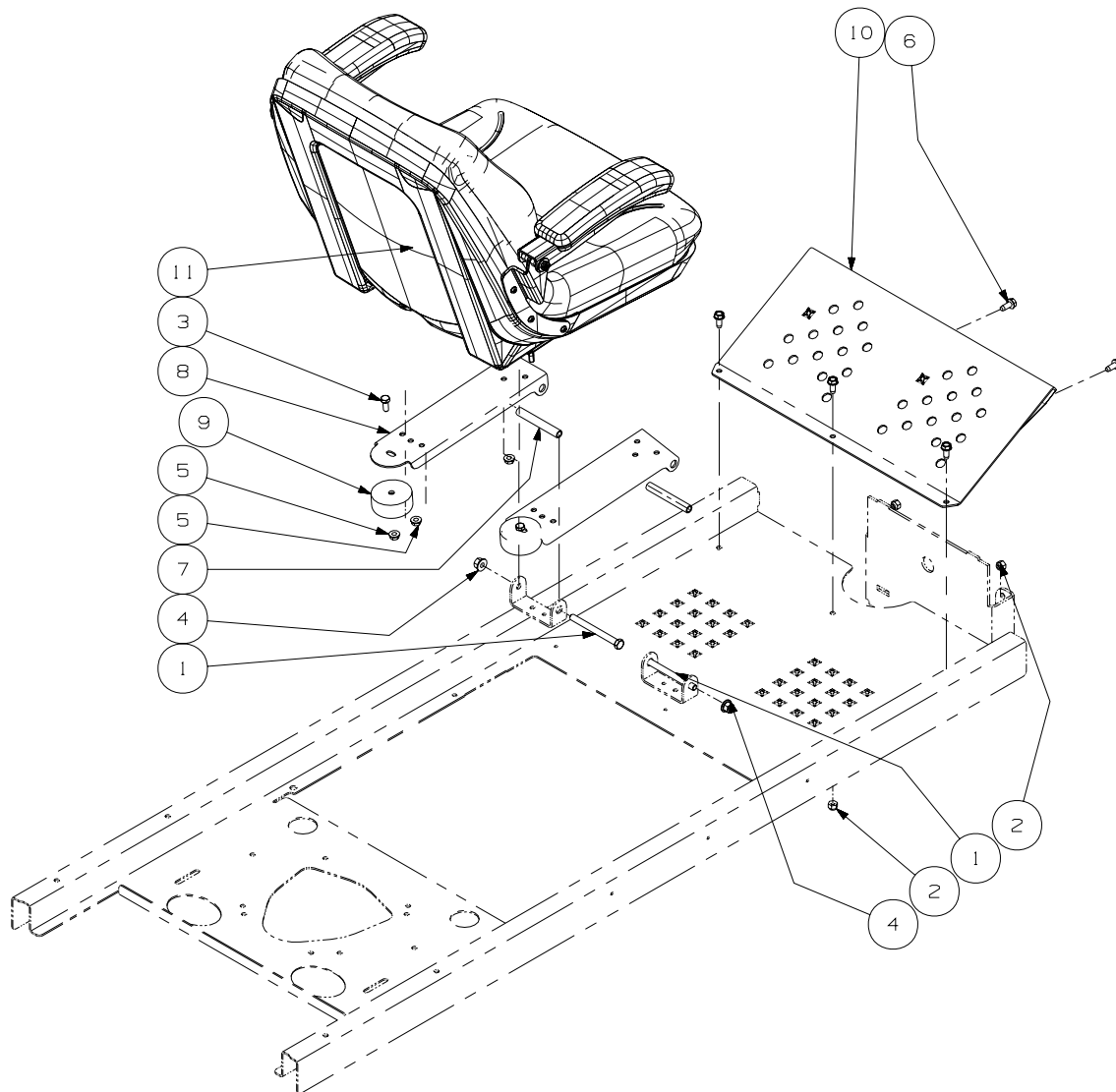
## Electrical Assembly Kawasaki - Figure 14 and Parts List



GD: 02002758-12/15/06

Ref. No.	Part No.	Description	Qty.	Ref. No.	Part No.	Description	Qty.
1	00012032	Battery, 12V 225CCA 30Min	1	15	01002252	Cable, Battery, Red, 24"	1
2	00012152	Lock Nut, Nylon Insert, 1/4-20	2	16	01003277	Normally Closed Seat Switch	1
3	00012165	Nylock Nut, 5/16-18	2	17	01003581	Switch, Ignition, 6 Pin	1
4	00013131	Hex Cap Screw, 1/4-20 x .75	2	18	01007597	Hour Meter	1
5	00013258	Boot, 1" OD Rubber Battery-PST Red	3	19	01008042	Safety Switch Retainer Spring	3
6	00014608	Lock Nut, Nylon Insert, 10-32	1	20	01009905	PTO Switch Bracket	1
7	00024233	Cable, Battery, Black, 17"	1	21	02000024	Switch, Safety N.O./N.C.	1
8	00032097	Nut, 5/8-32, w/Cap	1	22	02001134	Gromment, 1.5 ID x 2.13 OD	1
9	00095773	Battery Cable, 15" Red	1	23	02002990	Harness Assembly (not shown)	1
10	01000628	Self Tapping Screw, 1/4-20 x 1/2	6	24	02003038	Electrical Conduit Clip, 3/8	2
11	01001717	Normally Closed Safety Switch	2	25	02003415	Harness Assembly Adaptor	1
12	01001864	Self Tapping Screw, 10-32 x 1/2	7	26	02003477	Bracket, Safety Switch, Left Hand	1
13	01002111	Electric PTO Switch	1	27	02003478	Bracket, Safety Switch, Right Hand	1
14	01002228	Solenoid	1	28	02003567	Brake Switch Mounting Bracket	1

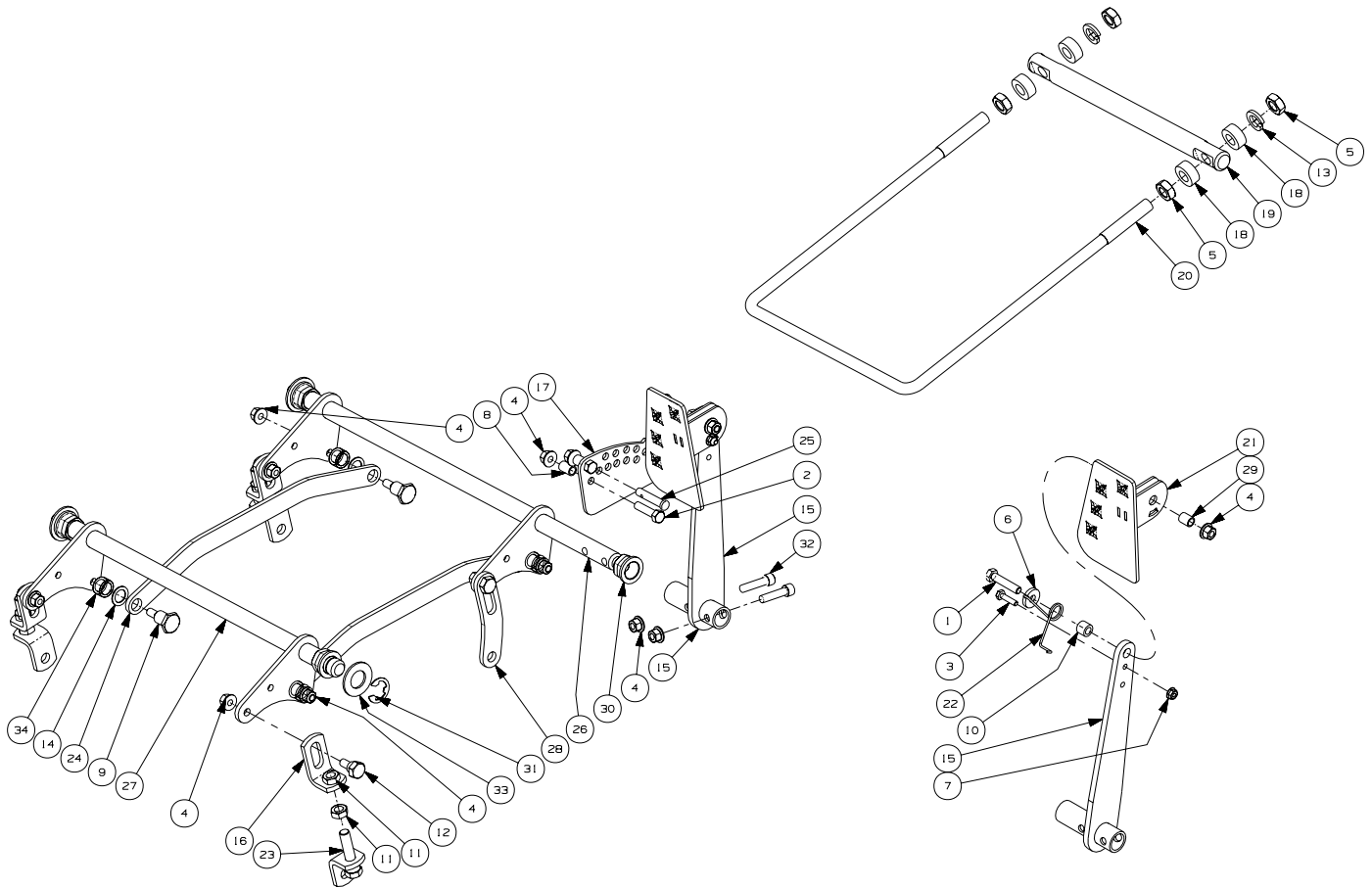
## Seat Assembly - Figure 15 and Parts List



GD: 02003443-12/18/06

Ref. No.	Part No.	Description	Qty.
1	00011925	Hex Cap Screw, 3/8-16, 4.00	2
2	00012165	Nylock Nut, 5/16-18	5
3	00013406	Hex Cap Screw, 5/16-18 x .75	2
4	00022560	Flange Lock Hex Nut, 3/8-16	2
5	01000635	Nut, 5/16-18, Hex Flange Lock	6
6	01008620	Self Tapping Screw 5/16-18 x .750	5
7	01009872	Spacer, .370 ID x .500 OD x 3.45	2
8	02002747	Seat Mounting Bracket	2
9	02002952	Bumper, 2.50 OD x 1.13 Long	2
10	02002961	Foot Rest Bracket	1
11	02002975	Seat	1

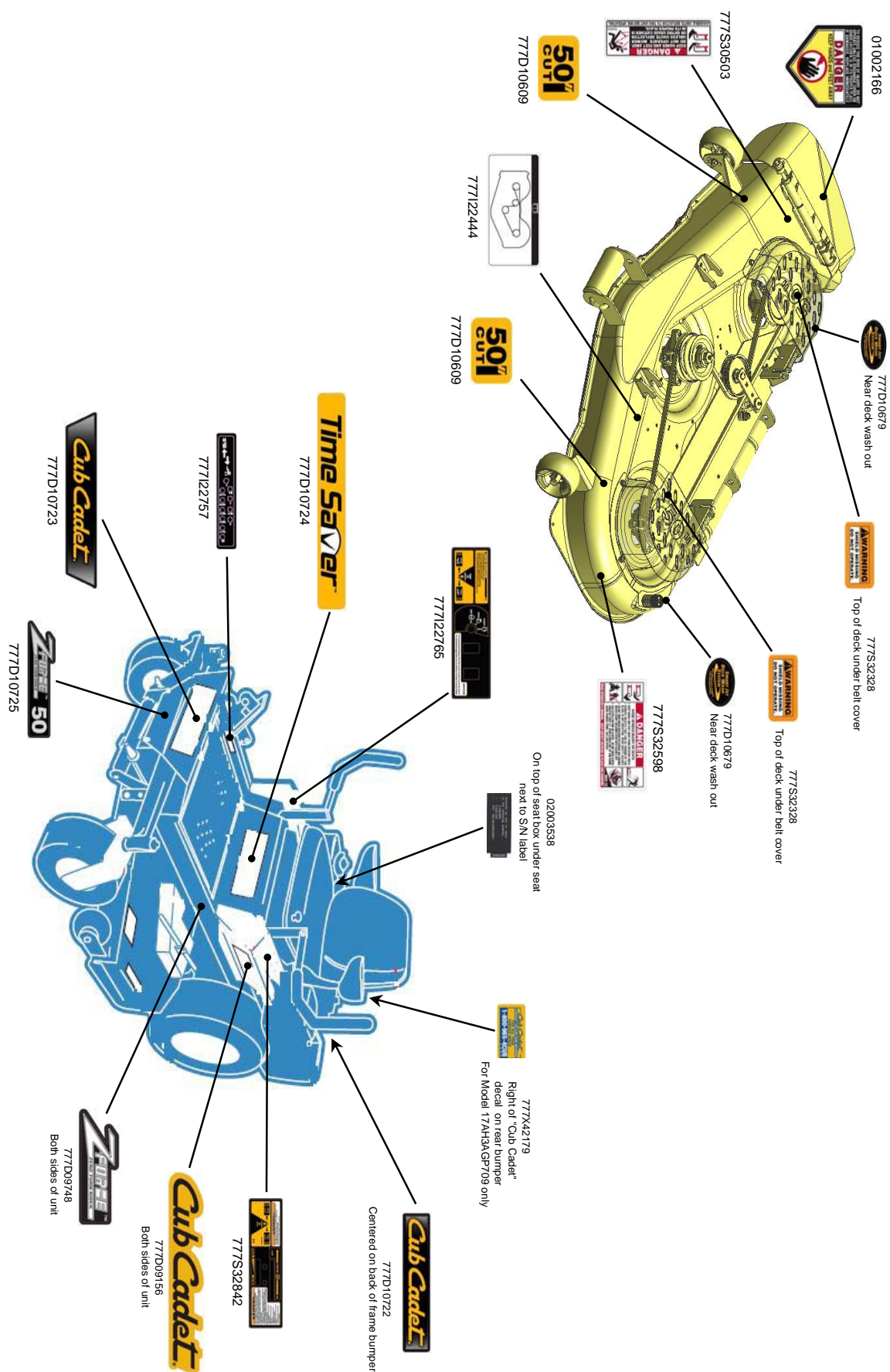
# Lift Assembly - Figure 16 and Parts List



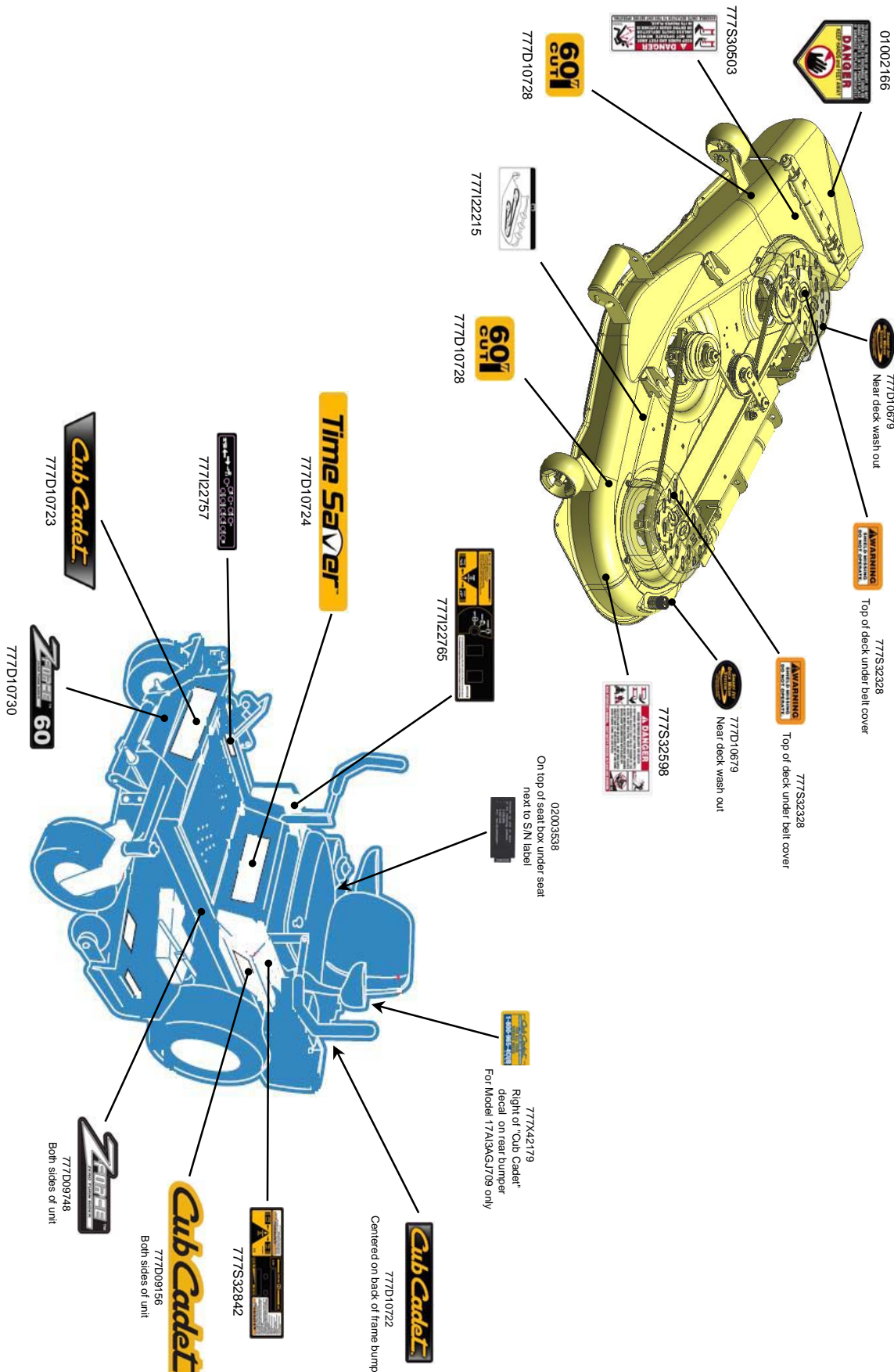
GD: 02002178-12/15/06

Ref. No.	Part No.	Description	Qty.	Ref. No.	Part No.	Description	Qty.
1	00008495	Capscrew, 3/8-16 x 1-3/4	1	18	02002875	Spacer, .635 ID x 1.188 OD x .500	4
2	00011438	Hex Cap Screw, 3/8-16 x 1-1/2	3	19	02002876	Trail Link Pivot Rod	1
3	00013416	Hex Cap Screw, 1/4-20 x 1.00	1	20	02002879	Front Lift Rod	1
4	00022560	Nut, 3/8-16, Hex Flange Lock	14	21	02002881	Foot Pedal Assembly	1
5	00035632	Jam Nut, 5/8-11	4	22	02002882	Foot Lift Torsion Spring	1
6	00083192	Idler Washer	1	23	02002890	Lower Lift Bracket Assembly	3
7	01002766	Nut, 1/4-20, Hex Flange Lock Nut	1	24	02002893	Lift Link	2
8	01003468	Spacer, .375 x .50 x .75 Lg	3	25	02002907	Clevis Pin, .375 x 1.89 x 2.125	1
9	01003536	Shoulder Screw, 0.625 OD x .830 Lg.	4	26	02002915	Front Shaft Assembly	1
10	01007312	Spacer, .625 OD x .385 ID x 1/2	1	27	02002916	Rear Shaft Assembly	1
11	01008658	Jam Nut, 1/2-20	6	28	02002979	Link Plate	1
12	02000393	Shoulder Screw, 3/8-16, .56 x .27	4	29	02003436	Spacer, .380 ID x .500 OD x .605	1
13	02000671	Lock Washer, 5/8	2	30	02003685	Hex Flange Bearing, .875 ID	4
14	02001891	Washer, 1.00 OD x .625 ID x .048	4	31	02003716	E Clip, .875 Dia.	3
15	02002377	Foot Lift Pivot Assembly	1	32	02003717	Sockethead Capscrew, 3/8-16 x 1.50	2
16	02002382	Deck Lift Bracket	3	33	02003720	Flat Washer, .94 x 1.75 x .11	3
17	02002612	Index Plate	1	34	750-0547	Spacer, .628 ID x .875 OD x .500	4









[illegible]

[illegible]



Cub Cadet LLC  
P.O. Box 361131  
Cleveland, OH 44136