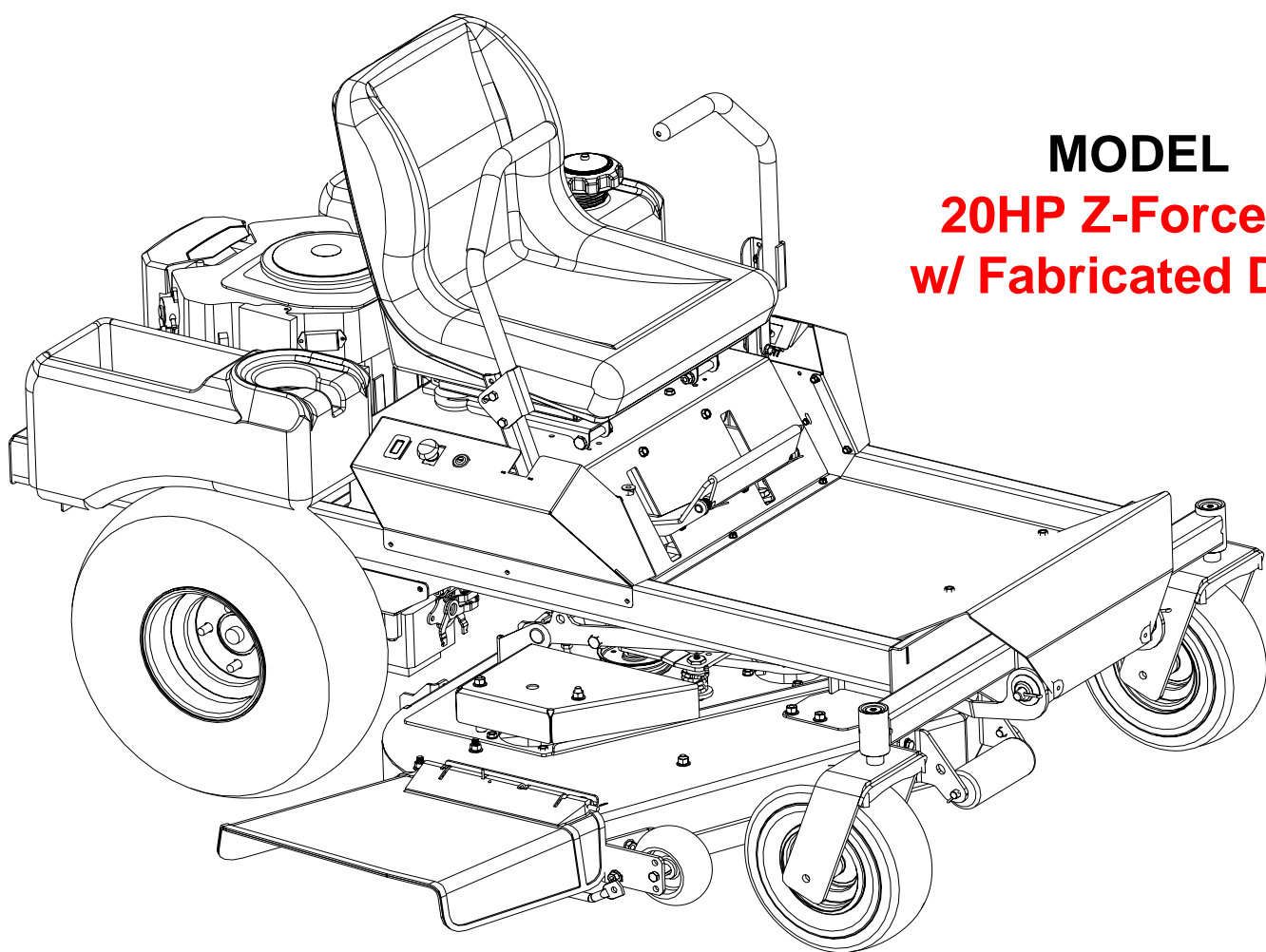




# Hydrostatic Zero-Turn Residential Riding Mower

*Turf Equipment*



**MODEL**  
**20HP Z-Force 48**  
**w/ Fabricated Deck**

## ILLUSTRATED PARTS LIST

---

# TABLE OF CONTENTS

---

Frame Assembly . . . . . 3

48" Fabricated Cutter Deck. . . . . 4 and 5

48" Fabricated Deck Spindle Assembly . . . . . 6 and 7

Control Assembly . . . . . 8 and 9

48" Front Caster & Tire Assembly . . . . . 10

Steering Assembly . . . . . 11

Drivetrain Assembly . . . . . 12

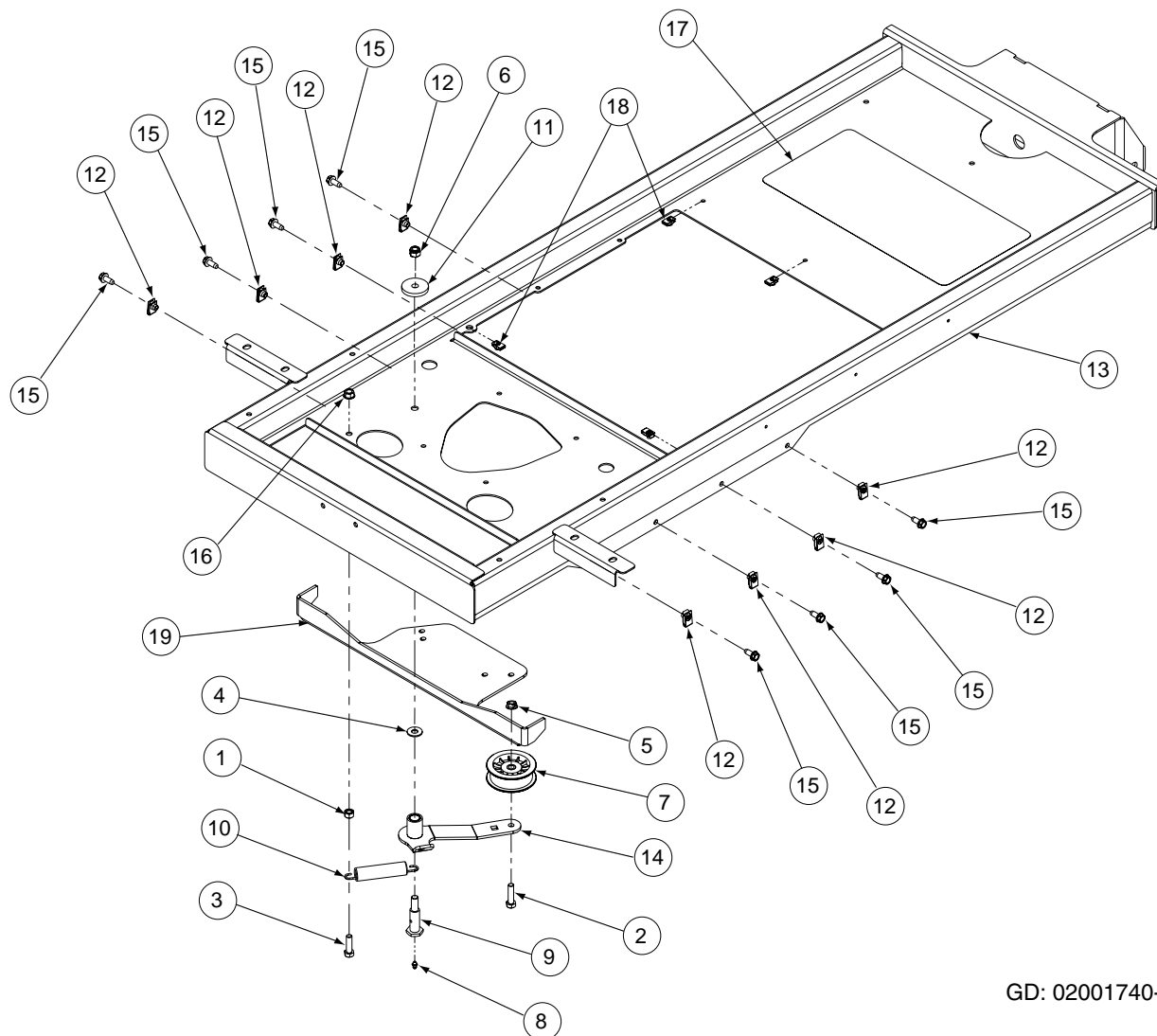
20 HP Kohler Engine Assembly . . . . . 13

Electrical Assembly . . . . . 14

Lift Assembly . . . . . 15

Decal Map . . . . . 16

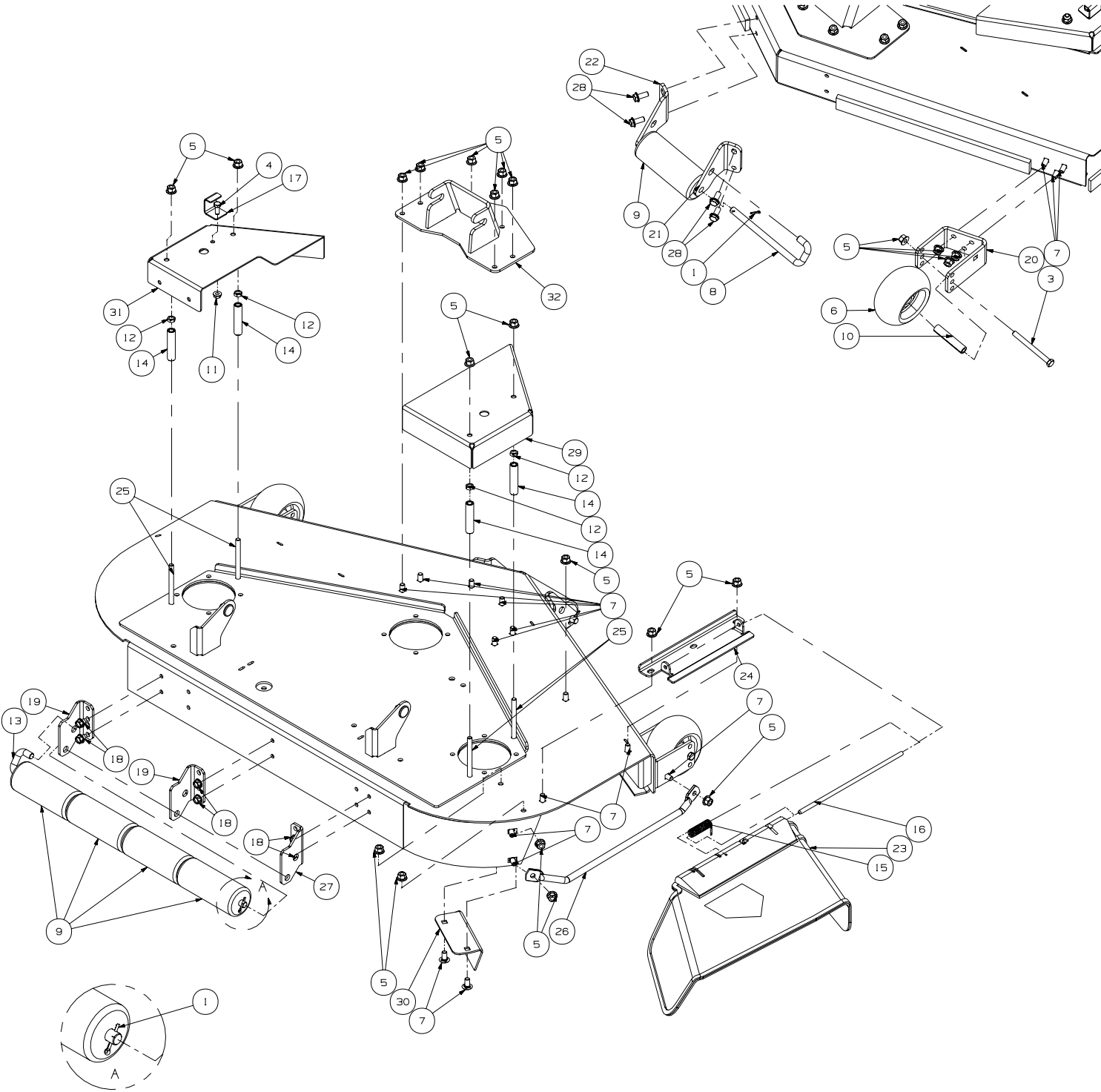
## Frame Assembly- Figure 1 and Parts List



GD: 02001740-12/14/05

Ref. No.	Part No.	Description	Qty.
1	00012166	Hex Nut, 5/16-18	1
2	00011438	Hex Cap Screw, 3/8-16 x 1-1/2	1
3	00013116	Hex Cap Screw, 5/16-18 x 1-1/4	1
4	00006168	Flat Washer, 3/8 zinc	1
5	00022560	Hex Nut, 3/8-16 Flange Lock	1
6	00027279	Nylock Nut, 7/16-14	1
7	00030782	Flat Idler Pulley w/ adaptor	1
8	00060078	Grease Fitting, 1/4-28 x 3/16	1
9	01000505	Shoulder Bolt	1
10	01002874	Extension Spring, .865 OD x 4.68 lg	1
11	01003269	Flat Washer, 7/16 ID x 1.75 OD	1
12	01003563	U-Nut, 5/16-18	8
13	02000615	Frame Assembly Weldment	1
14	01008399	Idler Arm Assembly	1
	01000308	Bearing	2
15	01008764	Hex Washer Screw 5/16-18 x .750	8
16	01000635	Nut, 5/16-18, Hexflange Lock	1
17	01006528	Abrasive Foot Pad	1
18	01008539	U-Nut, 1/4-20	5
19	02001482	Engine Plate Stiffener	1

# 48" Fabricated Cutter Deck - Figure 2



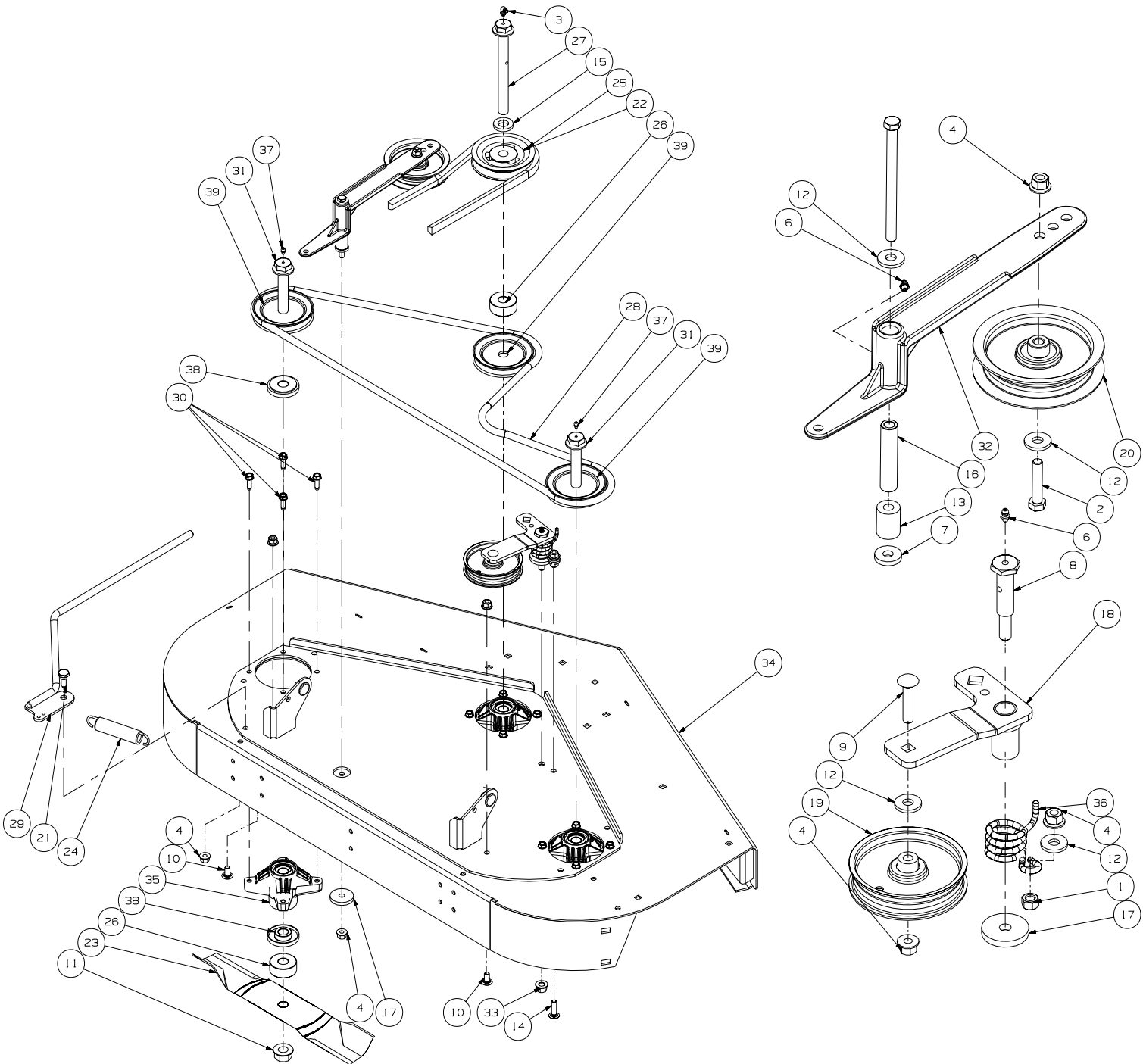
GD: 02002148-12/16/05

## 48" Fabricated Cutter Deck - Parts List for Figure 2

---

Ref. No.	Part No.	Description	Qty.
1	00003107	Cotter Pin, .125 Dia. x 1.0	2
2	00005765	Carriage Bolt, 3/8-16 x 1.25	1
3	00011925	Hex Cap Screw, 3/8-16, 3.75	3
4	00013406	Hex Head Cap Screw, 5/16-18 x .75	1
5	00022560	Hex Nut, 3/8-16 Flange Lock	26
6	01000343	Complete Wheel, 5.00 Dia	2
7	01000372	Carriage Bolt 3/8-16 x .75	18
8	01000375	Roller Pin 1/2 x 7.31	1
9	01000385	Front Roller	5
10	01000398	Wheel Spacer	2
11	01000635	Hex Nut, 5/16-18 Flange Lock	1
12	01002511	Nut, 3/8-16, Jam	4
13	01002635	Roller Pin	1
14	01003245	Spacer, .39 ID x .625 OD x 2.75	4
15	01003253	Torsion Spring	1
16	01003254	Chute Deflector Rod	1
17	01004109	Stop Bracket	1
18	01004304	Self Tapping Screw, 5/16-18 x 1/2	6
19	01005366	Fabricated Deck Roller Mount Bracket	2
20	01005367	Front Anti-Scalp Wheel Mount Bracket	2
21	01005368	Left Hand Front Roller Mount Bracket	1
22	01005369	Right Hand Front Roller Mount Bracket	1
23	01006693	Deflector Chute	1
24	01008226	Deflector Chute Bracket	1
25	01008049	Carriage Bolt, 3/8-16 x 4.00	4
26	01008644	Fabricated Deck Finger Guard	1
27	02002169	Grass Catcher Roller Bracket	1
28	01009243	Self Tapping Screw, 3/8-16 x 0.875	4
29	02002171	Belt Cover, RH	1
30	02001236	Fabricated Deck, Chute Bracket	1
31	02002170	Belt Cover, LH	1
32	02002173	Front Lift Bracket Weldment	1

**48" Fabricated Deck Spindle Assembly- Figure 3**

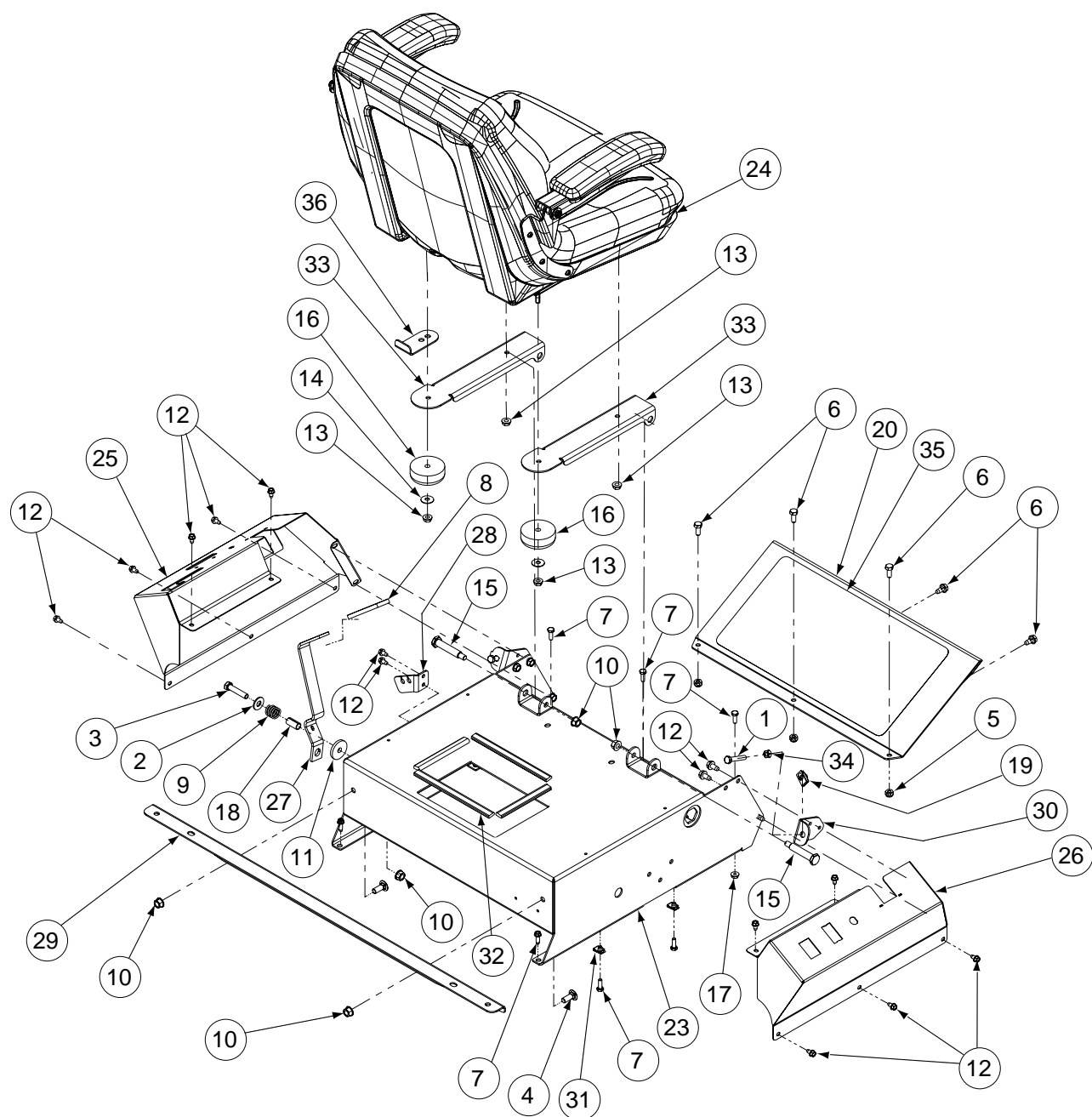


GD: 02002130-01/03/06

## 48" Fabricated Deck Spindle Assembly- Parts List for Figure 3

Ref. No.	Part No.	Description	Qty.
1	00006131	Hex Nut 3/8-16	1
2	00008495	Hex Cap Screw, 3/8-16 x 1.75	1
3	00012226	Grease Fitting, 90°	1
4	00022560	Hex Nut, 3/8-16 Flange Lock	7
5	00034167	Hex Cap Screw, 3/8-16 x 5.00	1
6	00060078	Grease Fitting, 1/4-28 x 3/16	2
7	00083192	Idler Washer	1
8	01000302	Shoulder Screw, 7/16-14	1
9	01000364	Hex Carriage Screw, 3/8-16, 1.75	1
10	01000372	Carriage Bolt 3/8-16 x .75	2
11	01000380	Hex Flange Nut, 3/4-16	3
12	01000723	Flat Washer, .406 ID x 1.0 OD x .105	4
13	01001539	Spacer, .39 ID x .875 OD x 1.10	1
14	01002010	Carriage Screw, 3/8-16 x 1.25	1
15	01003123	Spacer, .812 ID x .218	1
16	01003245	Spacer, .39 ID x .625 OD x 2.75	1
17	01003269	Flat Washer, 7/16 ID x 1.75 OD	2
18	01005737	Idler Arm Assembly, Deck Spindle	1
	01000308	Bearing	2
19	01004081	Flat Pulley	1
20	01004101	Idler Pulley, 4.06 OD	1
21	01004118	Shoulder Screw, .50 x .27, 3/8-16	1
22	01005202	V-Pulley, 4.75 OD	1
23	01005336	Hi-Lift Blade, 17.0	3
24	01009635	Extension Spring, .98 OD x 5.00	1
25	01009787	V-Belt, B-Section	1
26	01010014	Spacer .760 ID x 2.00 OD x 0.790	4
27	02000071	Spindle Bolt, 3/4-16 x 7.155	1
28	02000154	V-Belt, A-Section	1
29	02000416	Spring Tension Rod Assembly	1
30	02000762	Self Tapping Screw 5/16-18 x 1.00	12
31	02000819	Spindle Bolt 3/4-16 x 5.37	2
32	02001855	Idler Arm Assembly, Top	1
33	02000948	Nut, 7/16-20, FlangeLock	1
34	02002168	Deck Assembly, 48"	1
35	618-04394	Spindle Assembly	3
36	732-3067	Idler Torsion Spring	1
37	737-3000	Grease Fitting	2
38	748-3065A	Spindle Spacer	6
39	756-3089	Pulley	3

Control Assembly - Figure 4



GD: 02001839-11/09/05

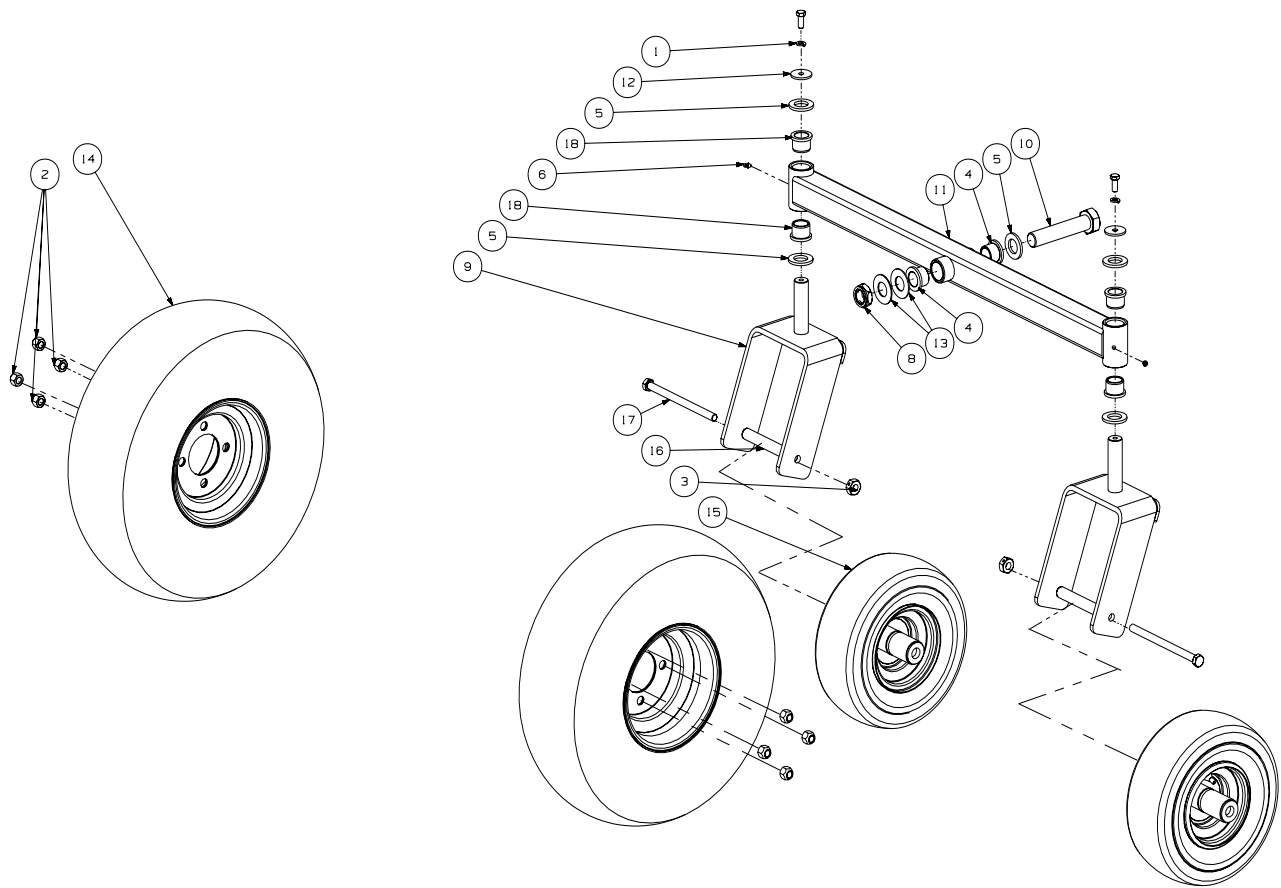


## Control Assembly - Parts List for Figure 4

---

Ref. No.	Part No.	Description	Qty.
1	00012382	Hex Cap Screw, 5/16-18 x 1-1/2	2
2	00083192	Idler Washer	1
3	00008495	Capscrew, 3/8-16 x 1-3/4	1
4	01000372	Carriage Bolt, 3/8-16	2
5	00012165	Nylock Nut, 5/16-18	3
6	01008620	Self Tapping Screw, 5/16-18 x 3/4	5
7	01000629	Self Tapping Screw, 1/4-20 x .75	9
8	00013595	Parking Brake Grip	1
9	00021797	Spring, .85 OD x 1 Lg	1
10	00022560	Hex Nut, 3/8-16 Flange Lock	5
11	00070022	Flat Washer, 1.25 x .411 x .100	1
12	01000628	Screw, 1/4-20 x 1/2	18
13	01000635	Hex Nut, 5/16-18 Flange Lock	4
14	01000960	Washer, .325 x .930 x .045	2
15	01002634	Shoulder Screw, 3/8-16, .5 x 2.345	2
16	01002753	Groment, 2.5 OD x 1.0 Lg	2
17	01002766	Hex Nut, 1/4-20 Flange Lock	3
18	01002772	Spacer, .375 x .50 x 1.02	1
19	01003563	U-Nut, 5/16-18	2
20	02000614	Foot Rest Bracket	1
21	01008198	Left Hand Brake Cable (not shown)	1
22	01008199	Right Hand Brake Cable (not shown)	1
23	01008482	Control Housing Weldment	1
24	02001942	Seat	1
25	02001307	Left Hand Control Console	1
26	02001308	Right Hand Control Console	1
27	02000630	Parking Brake Lever	1
28	01008488	Brake Cable Bracket	1
29	01008491	Front Tank Mounting Bracket	1
30	01008528	Lapbar Stop Bracket	2
31	01008539	U-Nut, 1/4-20	4
32	01008572	Battery Edge Trim	4
33	01008583	Seat Mounting Bracket	2
34	00012166	Hex Nut, 5/16-18	2
35	01006528	Abrasive Foot Pad	1
36	02001954	Seat Stop Bracket	1

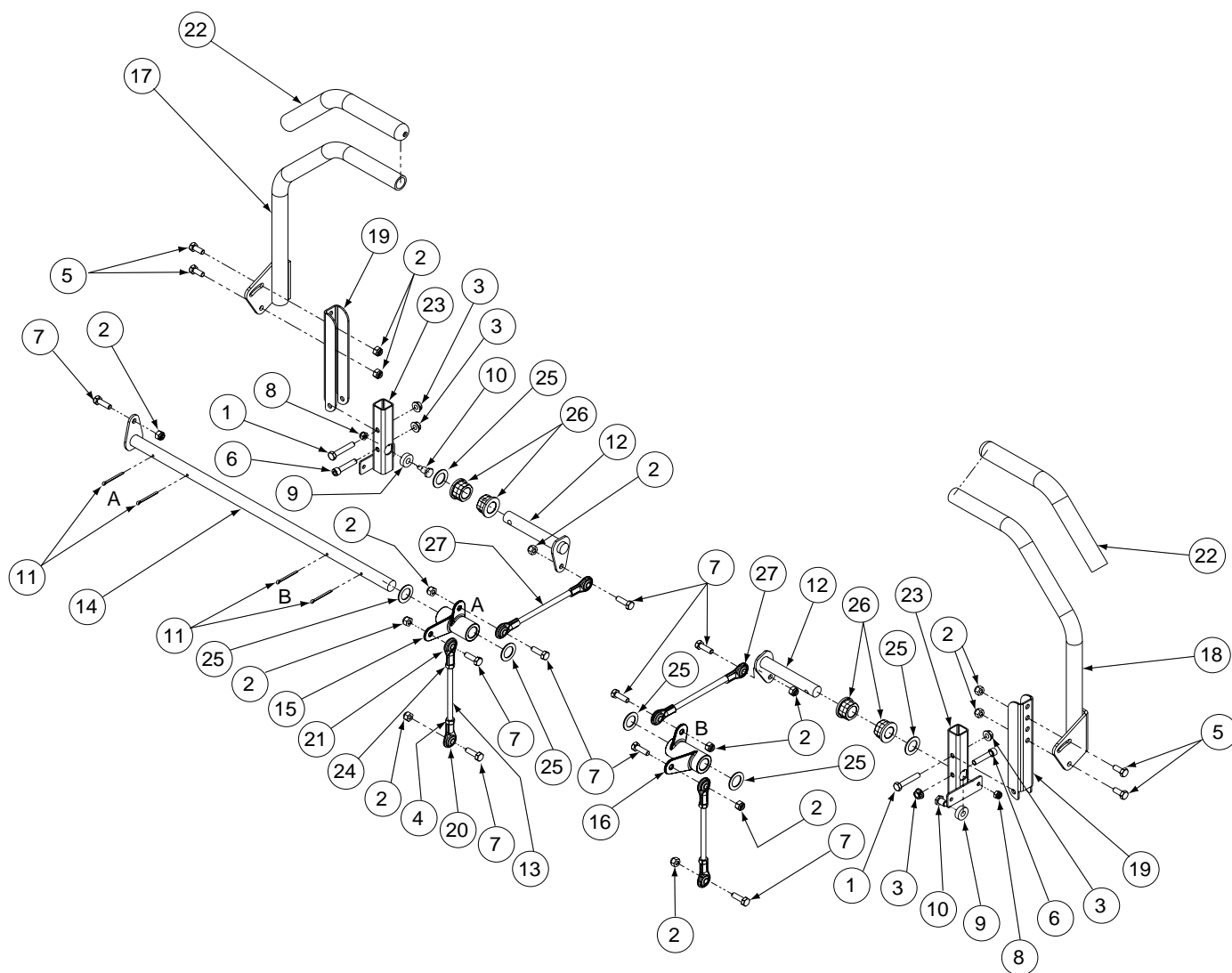
## 48" Front Caster & Tire Assembly - Figure 5 and Parts List



GD: 02000962-12/30/05

Ref. No.	Part No.	Description	Qty.
1	00012157	Lock Washer, 3/8 Zinc	2
2	00012187	Lug Nut, 1/2-20	8
3	00023287	Nut, 1/2-20, Center Lock	2
4	00023793	Flange Bearing, 1.013 ID	2
5	00023822	Washer Special	5
6	00060078	Grease Fitting, 1/4-28 x 3/16	2
7	01000368	Hex Cap Screw, 3/8-16 x .88	2
8	01000678	Nut Jam, 1.0-14, Nylon Insert	1
9	01007364	Castor Wheel Mounting Bracket	2
10	01006309	Hex Cap Screw, 1-14 x 5.0	1
11	02000616	Front Axle Assembly	1
12	01009253	Flat Washer, .390 x 1.5 x .134	2
13	02000588	Flat Washer, 1.00 ID x 2.25 OD x .075	2
14	02000966	Wheel Assembly, 20 x 8-10 NHS	2
15	02001562	Front Wheel Assembly	2
16	02002153	Wheel Spacer	2
17	02002154	Hex Cap Screw, 1/2-20 x 7.25	2
18	731-0374	Flange Bearing, 1.0 ID	4

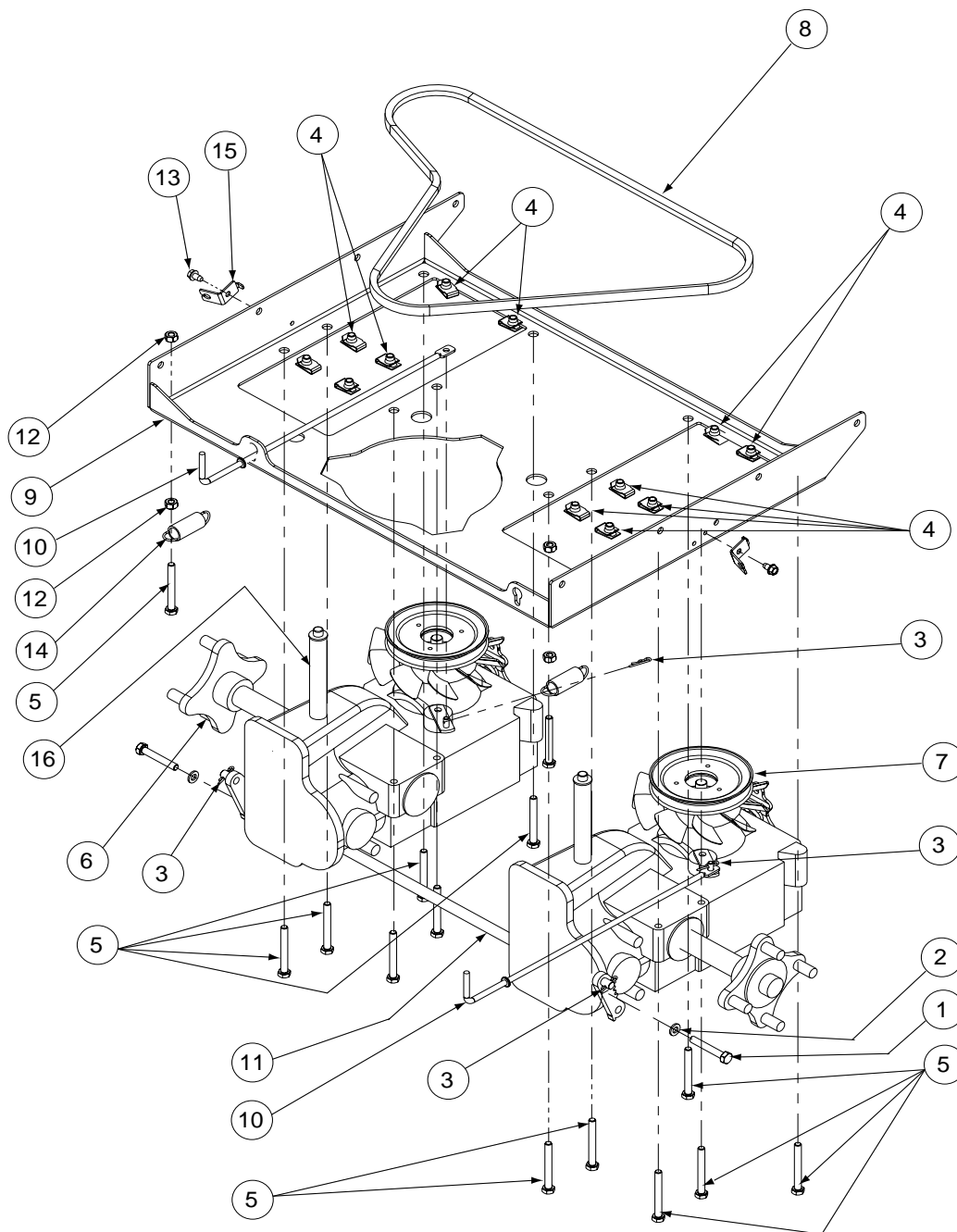
## Steering Assembly -Figure 6 and Parts List



GD: 01008108-09/27/05

Ref. No.	Part No.	Description	Qty.	Ref. No.	Part No.	Description	Qty.
1	00006129	Hex Cap Screw, 5/16-18 x 1-3/4	2	15	01008840	Steering Bellcrank Assembly Left Hand	1
2	00012165	Nut, 5/16-18, Nylock	13	16	01008841	Steering Bellcrank Assembly Right Hand	1
3	01000635	Nut, 5/16-18, Lock	4	17	01008425	Steering Handle Assembly Left Hand	1
4	00012167	Hex Nut, 5/16-24	4	18	01008426	Steering Handle Assembly Right Hand	1
5	00012179	Hex Cap Screw, 5/16-18 x 3/4	4	19	01008165	Steering Pivot Bracket	2
6	01008600	Capscrew, 5/16-18 x 1.50, Socket Head	2	20	01008410	Rod End, 5/16, Right Hand	4
7	00013092	Hex Cap Screw, 5/16-18 x 1.0	7	21	01008551	Rod End, 5/16, Left Hand	4
8	00014081	Nut, 1/4-28, SS, Nylon Insert	2	22	01008552	Lap Bar Grip	2
9	00071691	Control Rod Spacer	2	23	01008458	Pivot Bracket Weldment	2
10	01001919	Shoulder Screw, 1/4-28	2	24	01008576	Hex Nut, 5/16-24, Left Hand	4
11	00003107	Cotter Pin, .125 Dia. x 1.0	4	25	736-0287	Flat Washer, .793 ID x 1.24 OD x .060	6
12	01008433	Steering Input Shaft Assembly	2	26	741-0598	Hex Flange Bearing, .752 ID	4
13	01008149	Steering Link Rod	4	27	02002032	Control Rod Assembly	2
14	01008432	Bellcrank Steering Shaft Assembly	1				

## Drive Train Assembly- Figure 7 and Parts List



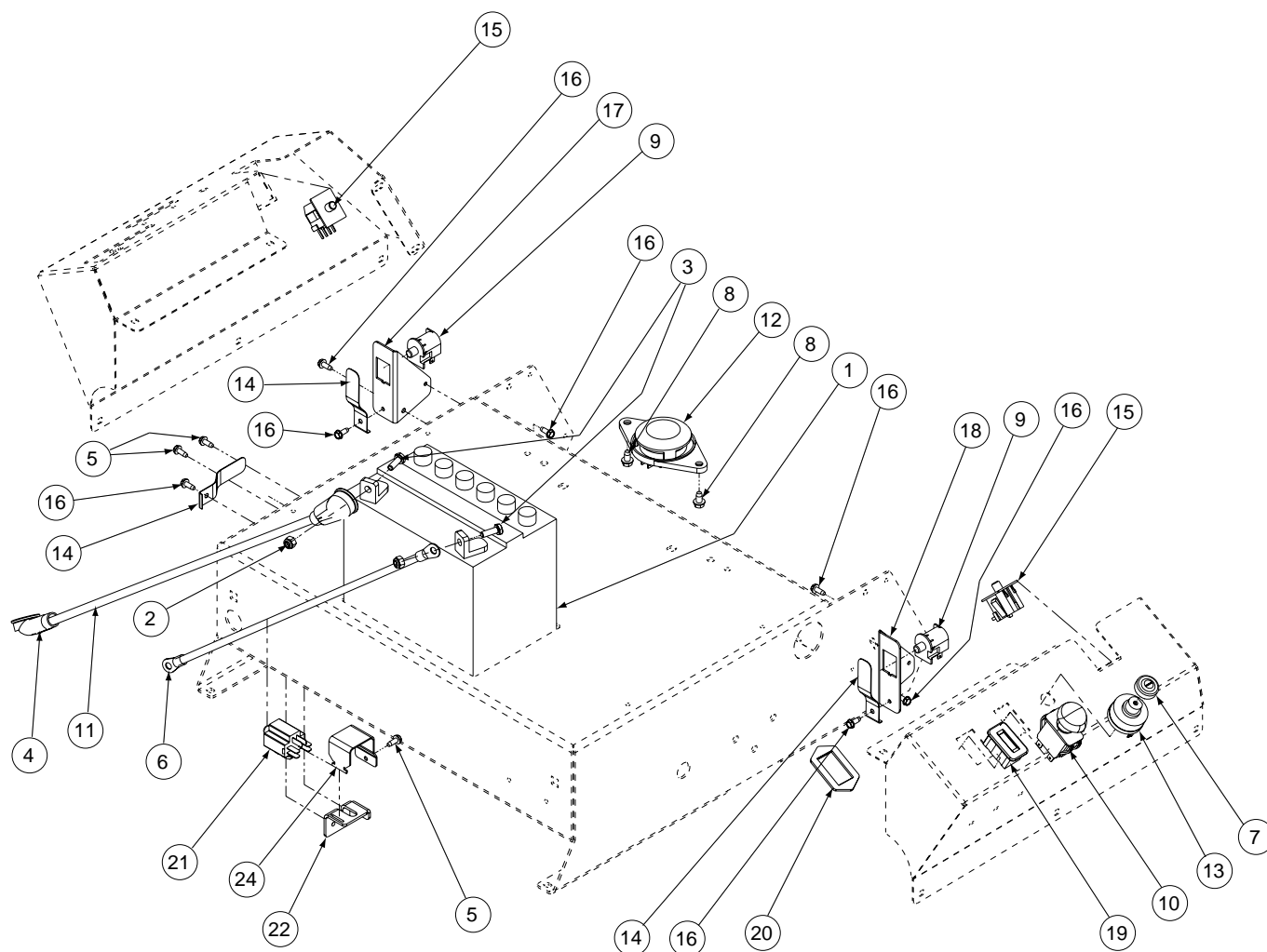
GD: 02000961-12/14/05

Ref. No.	Part No.	Description	Qty.	Ref. No.	Part No.	Description	Qty.
1	00013198	Hex Cap Screw, 5/16-18 x 2.0	2	10	02001332	Pump Rod	2
2	00012169	Flat Washer, .320 ID x .591 OD	2	11	01008414	Transmission Brace Tube	1
3	01002771	Cotter Pin, .072 x 1.12 Lg	4	12	00012166	Nut, 5/16-18	4
4	01003563	U-Nut, 5/16-18	12	13	01000628	Screw, 1/4-20 x 1/2	2
5	01007122	Hex Cap Screw, 5/16-18 x 2.5	14	14	01008758	Extension Spring, 1.0 OD x 5.000	2
6	02000902	IZT Transmission, Left Hand	1	15	01008611	Brake Cable Mounting Bracket	2
7	02000901	IZT Transmission, Right Hand	1	16	HG-51401	Hose, 1/2 Dia. x 4" Long includes:	1
8	01008349	V-Belt, 56.00	1		HG-70110	O-Ring Fitting Assembly	1
9	02000617	Transmission Mounting Bracket	1		HG-70109	Cap Vent Assembly	1

GD: 02002250-01/03/06

Ref No	Part No.	Description	Qty.	Ref No	Part No.	Description	Qty.
1	00006129	Hex Head Cap Screw, 5/16-18 x 1-3/4	4	18	01003116	Fuel Pickup Fitting	1
2	00011453	Jam Nut, 3/8-24	1	19	01003283	Oil Drain Extension Hose	1
3	00012157	Lock Washer, 3/8 Zinc	8	20	01004004	Throttle Control Knob	1
4	00012235	Clamp, Union	2	21	01004350	Fuel Tank	1
5	00012470	Cable Tie, 3/16 x .05 x 7.4	2	22	01005314	Flat Washer, 7/16 ID x 1.75 OD x .250	1
6	00014608	Lock Nut, Nylon Insert, 10-32	2	23	01007533	Key, 1/4 x 1/4 x 2.75	1
7	00060056	Nut, w/ Star Washer	1	24	01008138	Utility Bin	1
8	01000069	Fuel Cap	1	25	01008544	Ogura JD08 Electric Clutch	1
9	01000281	Fuel Tank Groment	1	26	01008531	Screw, #10-32 x 0.500	2
10	01000368	Hex Cap Screw, 3/8-16 x .88	8	27	01008623	Exhaust Pipe	1
11	01000389	Lock Washer, 7/16	1	28	01008640	Clutch Retainer Assembly	1
12	01000635	Lock Nut, Hex Flange, 5/16-18	4	29	01008808	Electric PTO Engine Pulley	1
13	01000721	Machine Screw, 8-32 x .375	1	30	02000426	20HP Kohler Engine	1
14	01000723	Flat Washer, .406 ID x 1.0 OD x .105	8	31	02000456	Kohler Muffler	1
15	01000811	Screw, 8-32 x .375, Hex Washer	2	32	02000477	Throttle Control Cable	1
16	01008637	Hex Cap Screw, 7/16-20 x 4.0	1	33	02000478	Choke Cable	1
17	00083192	Flat Washer, .390 x 1.00 x .180	2	34	--	Hose, 1/4" Fuel Line	1

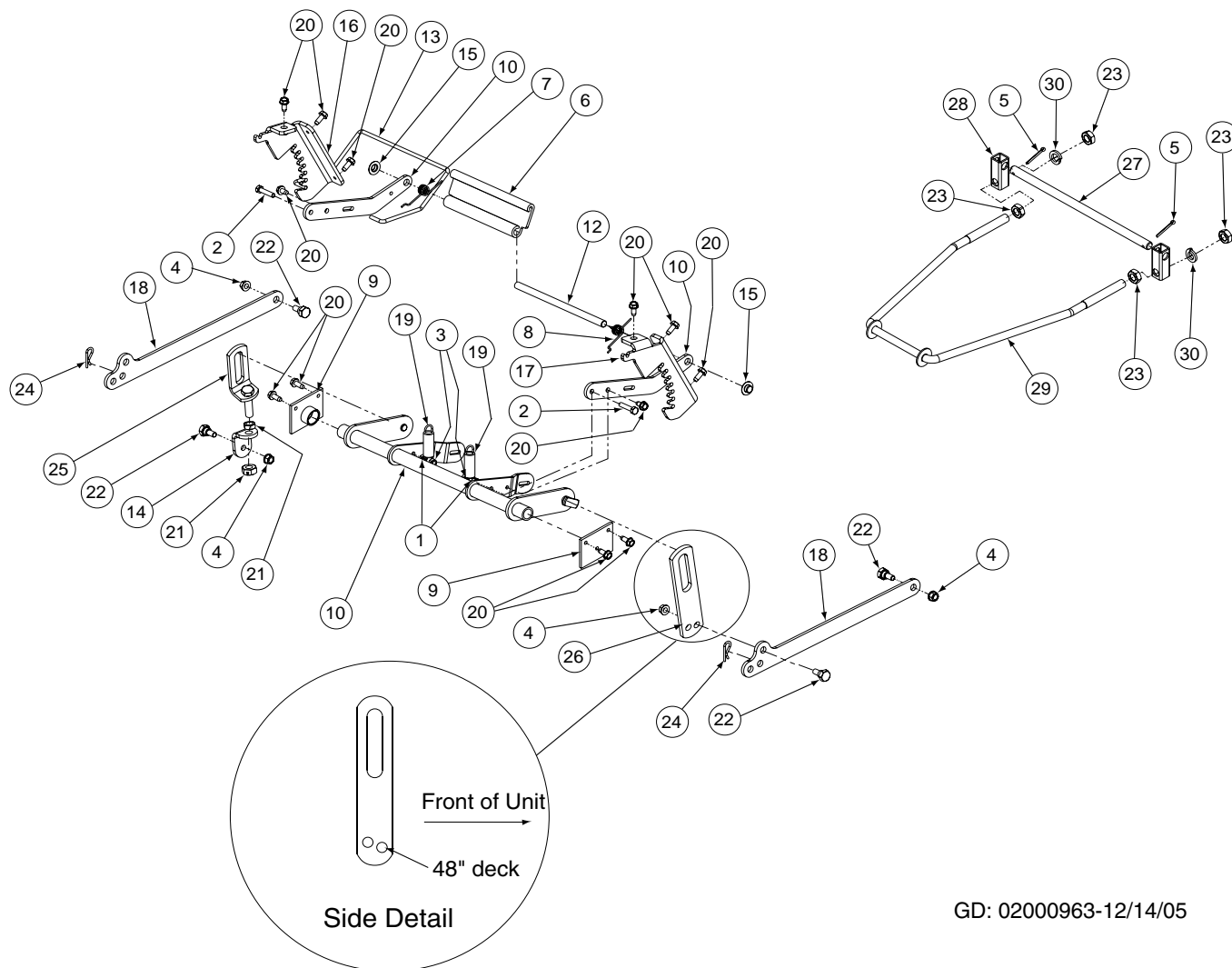
## Electrical Assembly - Figure 11 and Parts List



GD: 02000460-7/19/05

Ref. No.	Part No.	Description	Qty.	Ref. No.	Part No.	Description	Qty.
1	00012032	Battery, 12V 225CCA 30Min	1	13	01003581	Switch, Ignition, 6 Pin	1
2	00012152	Lock Nut, Nylon Insert, 1/4-20	2	14	01008042	Safety Switch Retainer Spring	3
3	00013131	Hex Cap Screw, 1/4-20 x .75	2	15	01008386	Neutral Switch	2
4	00013258	Boot, 1" OD Rubber Battery-PST Red	2	16	01001864	Self Tapping Screw, 10-32 x 1/2	7
5	01010129	Self Tapping Screw, 1/4-20 x .75	3	17	01008614	Bracket, Safety Switch, Left Hand	1
6	00024233	Cable, Battery, Black, 17"	1	18	01008615	Bracket, Safety Switch, Right Hand	1
7	00032097	Nut, 5/8-32, w/Cap	1	19	01007597	Hour Meter	1
8	01000628	Self Tapping Screw, 1/4-20 x 1/2	2	20	01009905	PTO Switch Bracket	1
9	01001717	Normally Closed Safety Switch	2	21	02000165	Switch, Plunger	1
10	01002111	Electric PTO Switch	1	22	02000368	Control Housing Assembly	1
11	01002252	Cable, Battery, Red, 24"	1	23	02000555	Harness Assembly (not shown)	1
12	01003277	Normally Closed Seat Switch	1	24	02000488	Switch, Clamp	1

## Lift Assembly - Figure 12 and Parts List



GD: 02000963-12/14/05

Ref. No.	Part No.	Description	Qty.	Ref. No.	Part No.	Description	Qty.
1	00012166	Hex Nut, 5/16-18	2	16	01008188	Lift Index Weldment, Left Hand	1
2	00012382	Hex Cap Screw, 5/16-18 x 1-1/2	2	17	01008189	Lift Index Weldment, Right Hand	1
3	00022547	Nut, 5/16-18, Center Lock	2	18	01008465	Rear Lift Arm	2
4	00022560	Nut, 3/8-16, Hex Flange Lock	4	19	01008573	Lift Spring	2
5	00060018	Cotter Pin, 3/16 x 1-1	2	20	01008620	Self Tapping Screw, 5/16-18 x 3/4	12
6	01008139	Deck Lift Handle	1	21	01008658	Jam Nut, 1/2-20	2
7	01008140	Deck Lift Spring, Left Hand	1	22	02000393	Shoulder Screw, 3/8-16, .56 x .27	4
8	01008141	Deck Lift Spring, Right Hand	1	23	00035632	Jam Nut, 5/8-11	4
9	01008477	Lift Hub Assembly	2	24	02000673	Hair Pin	2
10	01008459	Lift Shaft Assembly	1	25	02000833	Upper Link Lift Assembly, Left Hand	1
11	01008494	Handle Lift Arm	2	26	02000834	Link Lift PLate, Right Hand	1
12	01008175	Lift Handle Rod	1	27	02001563	Front Lift Rod	1
13	01008176	Lift Rod Index	1	28	02001907	Front Lift Rod Tube	2
14	01008183	Lower Lift Bracket, Left Hand	1	29	02002075	Front Lift Rod	1
15	01008187	Cap Lift Push Nut	2	30	02000671	Lock Washer, 5/8	2





## MAINTENANCE RECORD

[illegible]

## MAINTENANCE RECORD

[illegible]

## MAINTENANCE RECORD

[illegible]



Cub Cadet LLC  
P.O. Box 361131  
Cleveland, OH 44136