

Parts Manual

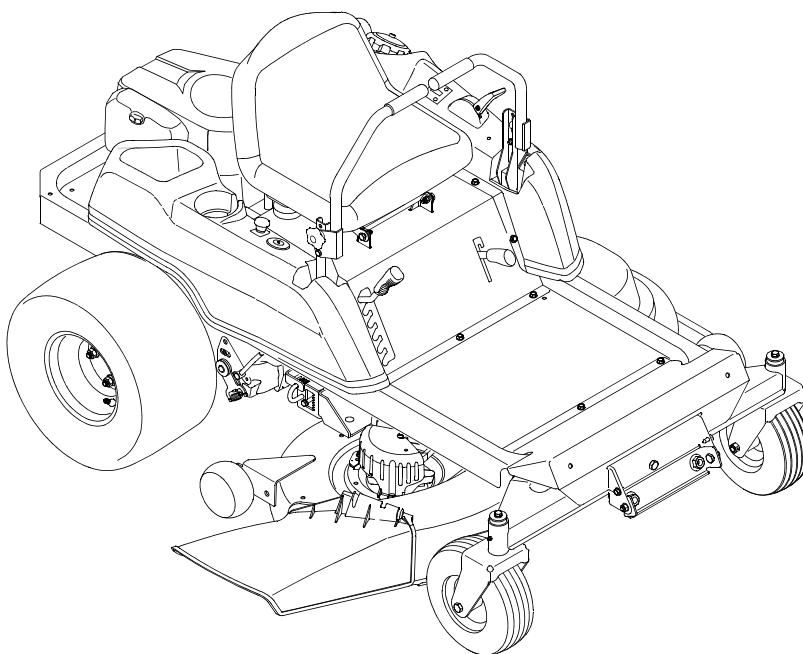
RZT SERIES

Model Number

RZT 42

Model Year 2006

Mfg. Date 1J015 and after



MODEL RZT 42**TABLE OF CONTENTS**

DESCRIPTION	PAGE
Frame and Drive Idler Assembly	3
Electrical	4
Operator's Platform	6
Controls and Deck Lift	8
Rear Drive and Wheels	10
RH Transmission	12
LH Transmission	14
42" Mower Deck	16
Engine Connections	18
Front Axle	20
Seat Adjustment	21
Engine (Not Available at Time of Printing)	

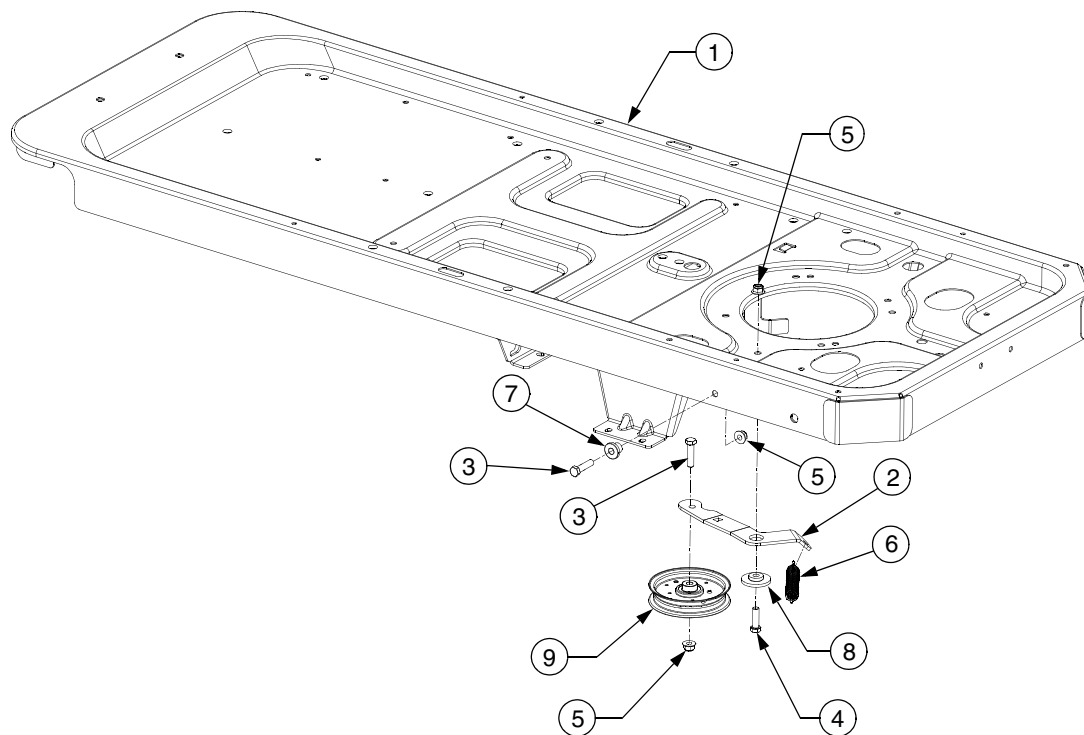
NOTE: For **painted parts**, please refer to the list of color codes below. Please add the applicable color code, wherever needed, to the part number to order a replacement part.

For instance, if a part, numbered 700-xxxx, is painted Cub Yellow, the part number to order would be 700-xxxx-0716.

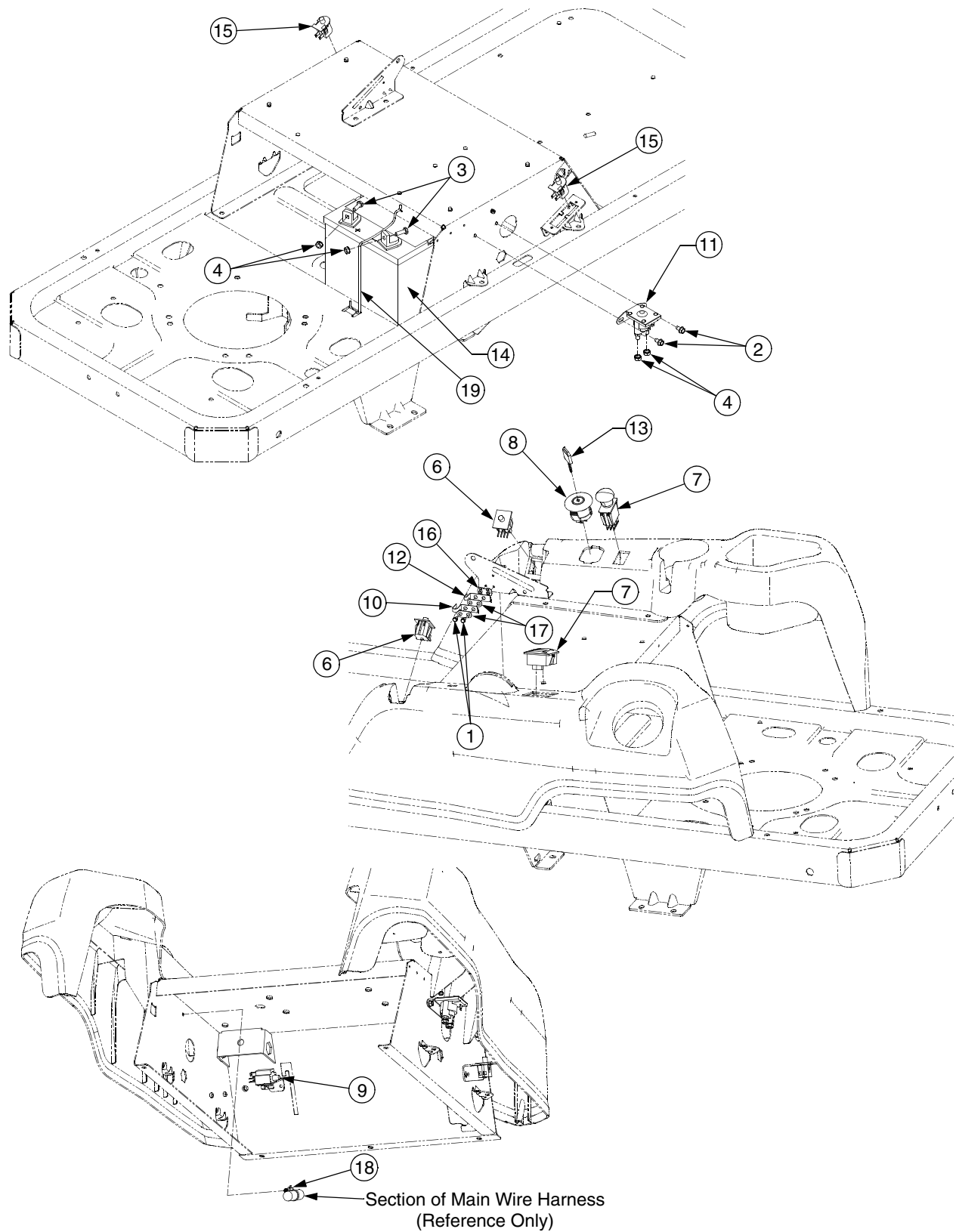
Cub Yellow: 0716

Cub Beige: 0499

Powder Black: 0637

FRAME AND DRIVE IDLER ASSEMBLY

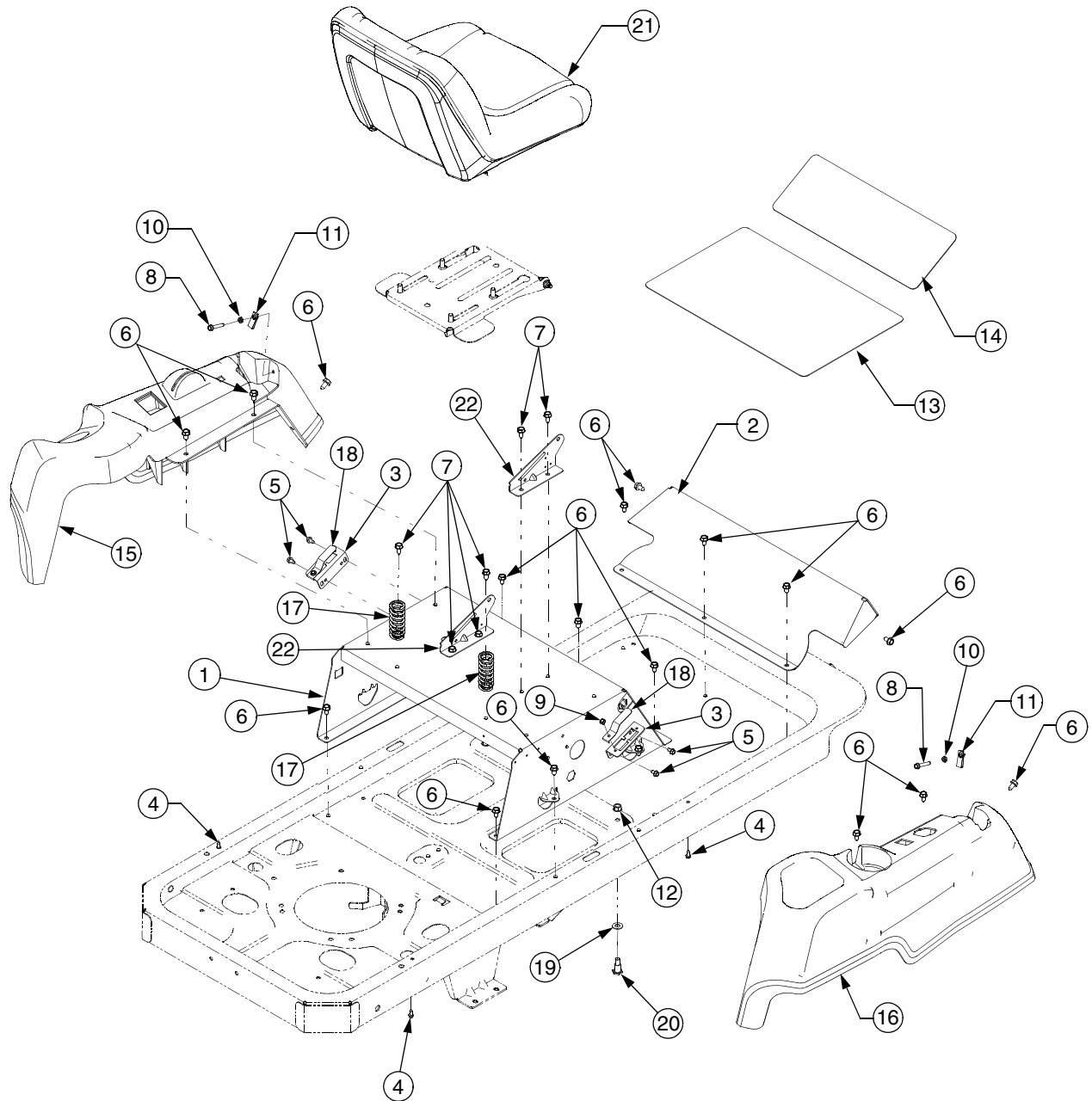
REF. NO.	PART NUMBER	DESCRIPTION	QTY.
1	603-04303B	Frame Assembly	1
	777D09506	Graphic, Cub Cadet	1
	777I22489	Graphic, Release Lever	2
2	703-05829	Idler Arm, Drive	1
3	710-0520	Screw, Hex Cap, 3/8-16 x 1.5 GR5	3
4	710-3005	Screw, Hex Cap, 3/8-16 x 1.25 GR5	1
5	712-04065	Nut, Hx Insert Flange Lck, 3/-16 GRF	4
6	732-0626	Spring, Extension, .75 x 5.06	1
7	738-04058	Spacer, Shoulder, .39 x 1.0 x .7	2
8	738-04162A	Screw, Shoulder, .884 x .19	1
9	756-04129	Pulley, Idler, 4.25 Dia.	1

ELECTRICAL

ELECTRICAL

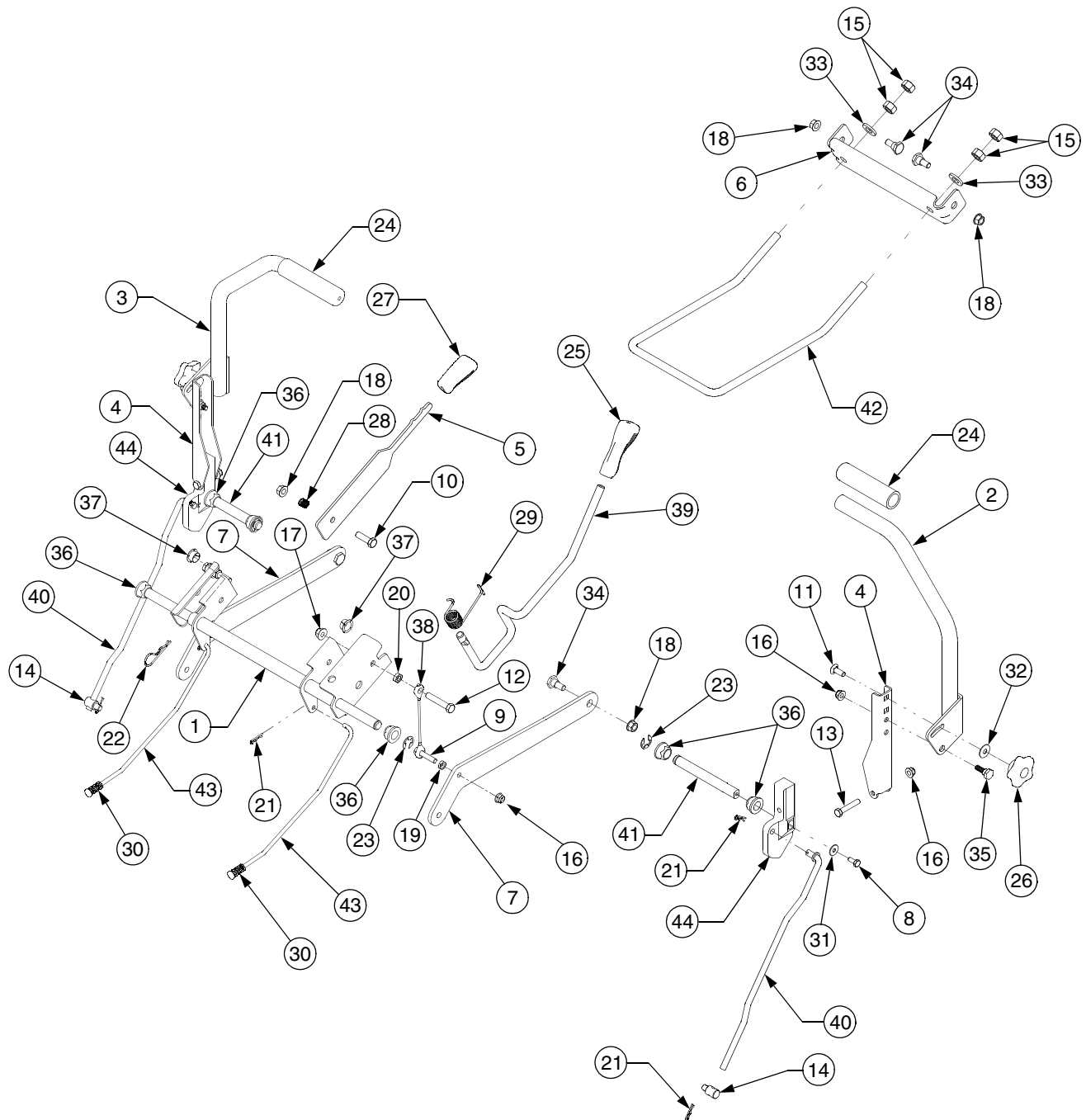
REF. NO.	PART NUMBER	DESCRIPTION	QTY.
1	710-0227	Screw, Hex Wash. Hd. Tapp #8-18 x .5	2
2	710-0599	Screw, Hex Wash. Hd. Tapp, 1/4-20 x .5	2
3	710-3015	Screw, Hex Cap, 1/4-20 x .75 GR5 ..	2
4	712-0271	Nut, Hex Sems, 1/4-20	4
5	725-04022A	Meter, Hour	1
6	725-04165	Switch, Dbl. Pole - Neutral	2
7	725-04174	Switch, PTO	1
8	725-04228	Switch, Ignition	1
9	725-04232	Switch, 3-Pole, (NC-NO-NO) - Brake	1
10	725-1303	Switch, Outer Seat Spring	1
11	725-1426A	Solenoid	1
12	725-1439	Switch, Inner Seat Spring	1
13	925-1745	Key	1
14	725-1707D	Battery, 235 CCA	1
15	725-3166	Switch, Snap Mount (N.C.) - Reverse	2
16	726-0278	Plate, Insulator Boss	1
17	726-0279	Plate, Insulator	2
18	726-0470	Tie, Cable	2
19	747-04425	Rod, Battery Holddown	1
†	725-04297	Harness Assembly, Wire	1
†	725-04188	Cable Wire, Black - to Ground	1

† NOT SHOWN

OPERATOR'S PLATFORM

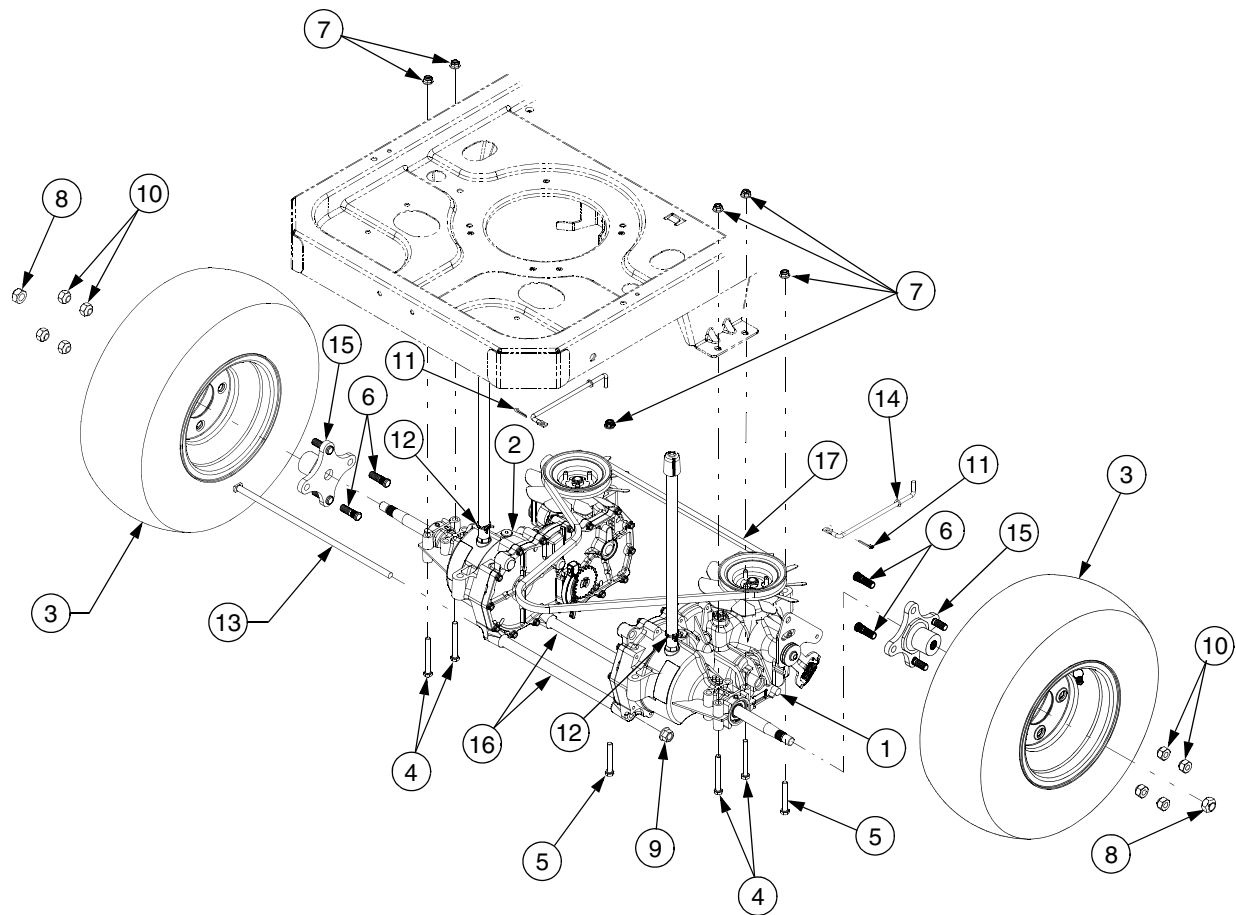
OPERATOR'S PLATFORM

REF. NO.	PART NUMBER	DESCRIPTION	QTY.
1	603-04326	Frame, Seat Box	1
	777I22600	Graphic, Park Brake	1
	777S32354	Graphic, Warning	1
	777I22275	Graphic, Deck Height	1
2	703-05373A	Bracket, Foot Rest	1
	777D09506	Graphic, Cub Cadet	1
3	703-05467	Bracket, Switch Mounting	2
4	710-04261	Screw, Hex Wash. Hd Tapp	4
		#12-16 x .50	
5	710-0599	Screw, Hex Wash. Hd. Tapp.	4
		1/4-20 x .5	
6	710-0604A	Screw, Hex Wash. Hd. Tapp	20
		5/16-18 x .625	
7	710-0726	Screw, Hex Wash. Hd. Tapp	6
		5/16-12 x .75	
8	710-0778	Screw, Hex Wash. Hd. Tapp.	2
		1/4-20 x 1.5	
9	710-1268	Screw, Hex Wash. Hd Tapp	2
		#10-16 x .375	
10	712-0298	Nut, Hex Jam, 1/4-20 GR2	2
11	712-04092	Nut, U Type Speed, 1/4-20	2
12	712-0431	Nut, Hex Flange Lock, 3/8-16 GRF	2
13	723-04020	Pad, Abrasive Foot Plate	1
14	723-04021	Pad, Abrasive Toe Plate	1
15	731-04662B	Console, LH	1
	777I22596	Graphic, Instruction	1
	777D09709	Graphic, Cub Cadet	1
	777I22279	Graphic, Throttle Control	1
16	731-04663A	Console, RH	1
	777I22601	Graphic, Instruction	1
	777D09710	Graphic, Cub Cadet	1
17	732-04035	Spring, Compression, 1.28 x 3.125	2
18	732-04200	Spring, Switch Actuator	2
19	736-0300	Washer, Flat, .406 x .875 x .059	2
20	738-0430	Screw, Shoulder, .50 x .685:3/8-16 ...	2
21	757-04041	Seat	1
	777D09646	Graphic, Cub Cadet/USA	1
22	783-1489B	Bracket, Seat Pivot	2

CONTROLS AND DECK LIFT

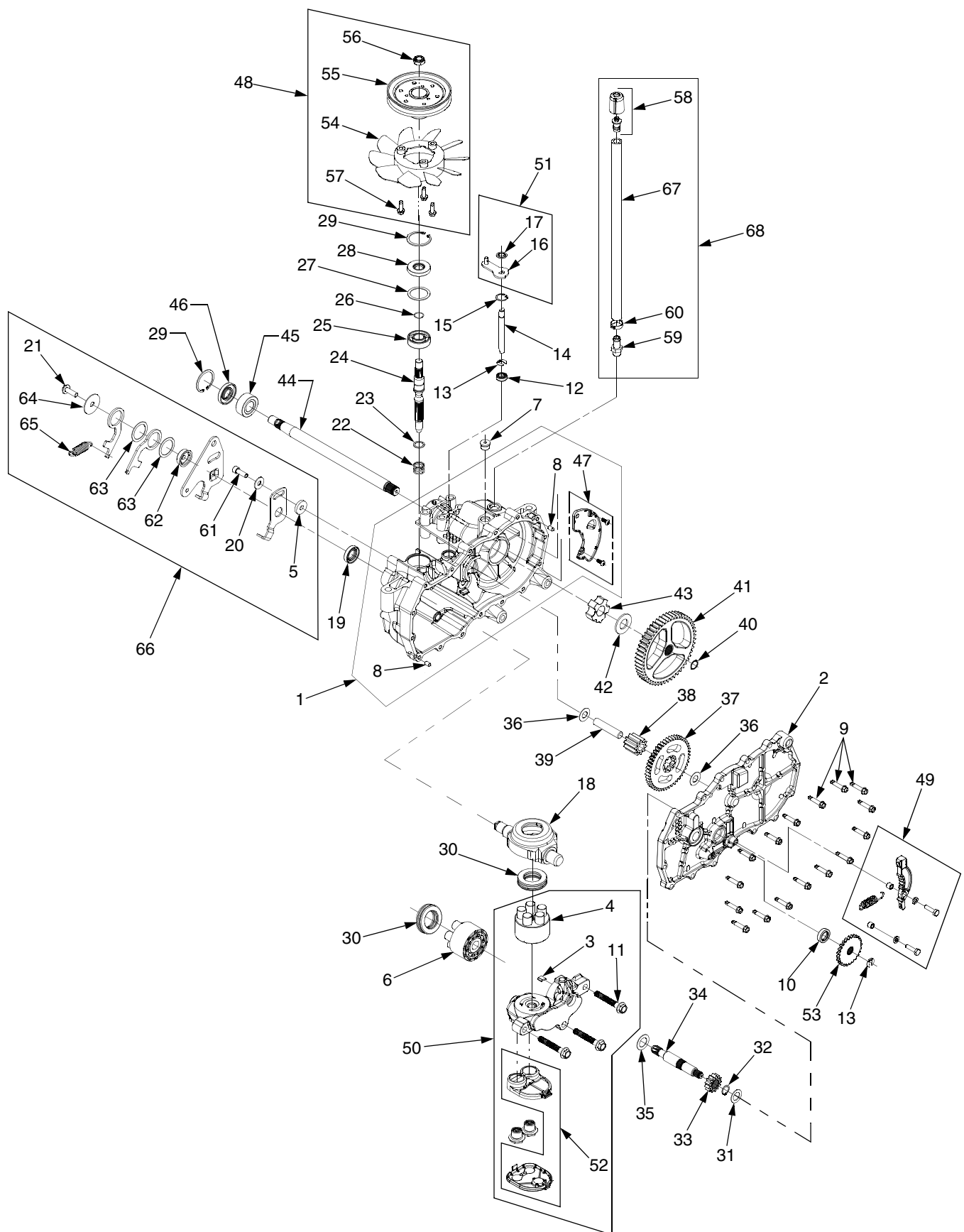
CONTROLS AND DECK LIFT

REF. NO.	PART NUMBER	DESCRIPTION	QTY.
1	603-04160A	Shaft Assembly, Deck Lift	1
2	603-04322	Lever, Lapbar, RH	1
3	603-04324	Lever, Lapbar, LH	1
4	703-05387A	Bracket, Lapbar Pivot	2
5	703-05396	Handle, Brake	1
6	703-05414A	Bracket, Front Deck Hanger	1
7	703-05793	Arm, Deck Lift	2
8	710-0433	Screw, Hex Lock, 1/4-20 x .62 GR5	2
9	710-0805	Screw, Hex Cap, 5/16-18 x 1.5 GR5 ...	2
10	710-3005	Screw, Hex Cap, 3/8-16 x 1.25 GR5 ...	1
11	710-3105	Bolt, Carriage, 5/16-18 x .875	2
12	710-3144	Screw, Hex Cap, 3/8-16 x 2.0 GR5	2
13	710-3180	Screw, Hex Cap, 5/16-18 x 1.75 GR5	2
14	711-0832	Ferrule, 3/8-24 x .375	2
15	712-0206	Nut, Hex, 1/2-13 GR5	4
16	712-04063	Nut, Hx Flange Insert Lck, 5/16-18 GrF	6
17	712-04065	Nut, Hx Flange Insert Lck, 3/8-16GrF	2
18	712-0431	Nut, Hex Flange Lock, 3/8-16 GRF	5
19	712-3007	Nut, Hex Jam, 5/16-18 GR5	2
20	712-3008	Nut, Hex Jam, 3/8-16 GR5	2
21	714-0104	Pin, Internal Cotter	6
22	714-3020	Pin, Internal Cotter	1
23	716-0106	E-Ring , .625 Dia. Shaft	4
24	720-0274	Grip, Hand	2
25	720-0311	Grip, Handle	1
26	720-04052	Knob, Nut, 5/16-18	2
27	731-04735	Grip, Handle	1
28	732-0334	Spring, Compression	1
29	732-0874	Spring, Torsion	1
30	732-04350	Spring, Compression	2
31	736-0270	Washer, Bell, .265 x .75 x .062	2
32	736-0425	Washer, Bell, .325 x .93 x .045	2
33	736-3019	Washer, Flat, .531 x 1.062 x .134 HT ..	2
34	738-0143	Screw, Shoulder, .498 x .340:3/8-16	4
35	738-0296	Screw, Shoulder, .437 x .268:5/16-18	2
36	741-0225	Bearing, Hex Flange	6
37	741-3074	Bearing, Flange, .626 x .938 x .344	2
38	746-0970	Cable, Deck Lift, 5.05 Long	2
39	747-04224	Rod, Deck Lift Handle	1
40	747-04225A	Rod, Lapbar Control	2
41	747-04226	Shaft, Control	2
42	747-04401	Rod, Deck Front Hanger	1
43	747-04491	Rod, Brake	2
44	748-04052	Hub, Control	2

REAR DRIVE AND WHEELS

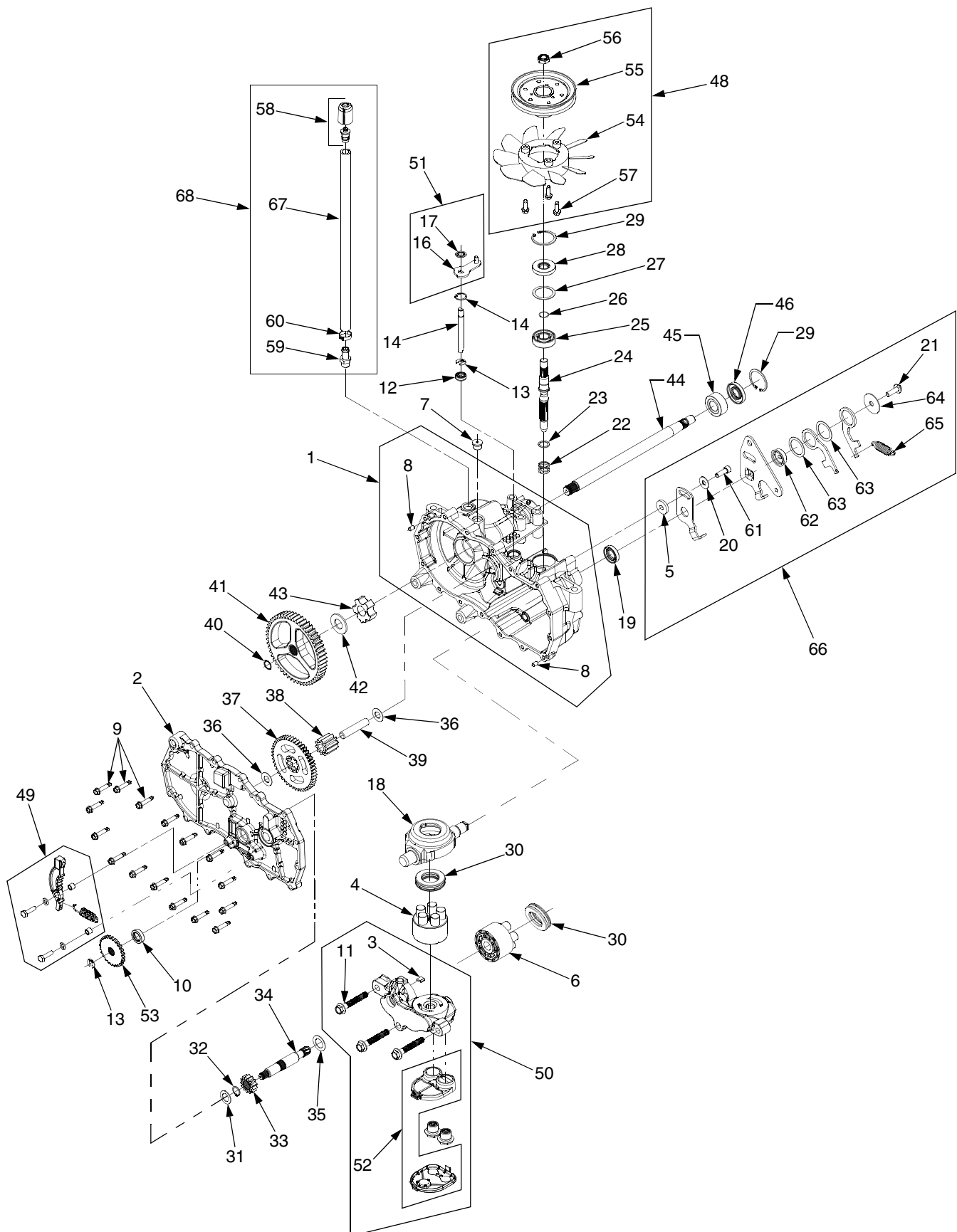
REAR DRIVE AND WHEELS

REF. NO.	PART NUMBER	DESCRIPTION	QTY.
1	618-04326	Transmission Assembly, RH	1
2	618-04237	Transmission Assembly, LH	1
3	634-04127	Wheel Assembly, 18 x 6.5 x 8	2
	734-0294	Tire, 18 x 6.5 x 8	2
	734-0255	Valve Assembly	2
4	710-0176	Screw, Hex Cap, 5/16-18 x 2.75 GR5	4
5	710-0395	Screw, Hex Cap, 5/16-18 x 2.25 GR5	2
6	710-0852	Stud, Rib Neck, 7/16-14 x 1.6	8
7	711-04063	Nut, Hx Insert Flange Lck, 5/16-18 GrF	6
8	712-04088	Nut, Hex Lock, 9/16-18 GRC	2
9	712-0459	Nut, Hex Flange Lock, 7/16-20 GrB	2
10	712-3050	Nut, Lug, 7/16-14	8
11	714-0507	Pin, Cotter, 3/32 x .75	2
12	726-04059	Clamp, Hose	2
13	738-04192	Rod, .405 x 14.0	2
14	747-04217B	Rod, Bypass	2
15	748-04054	Hub, Wheel	2
16	750-04561	Tube, .45 x .69 x 10.2	2
17	754-04043	V-Belt, Type A Sec x 57.7	1

RH TRANSMISSION

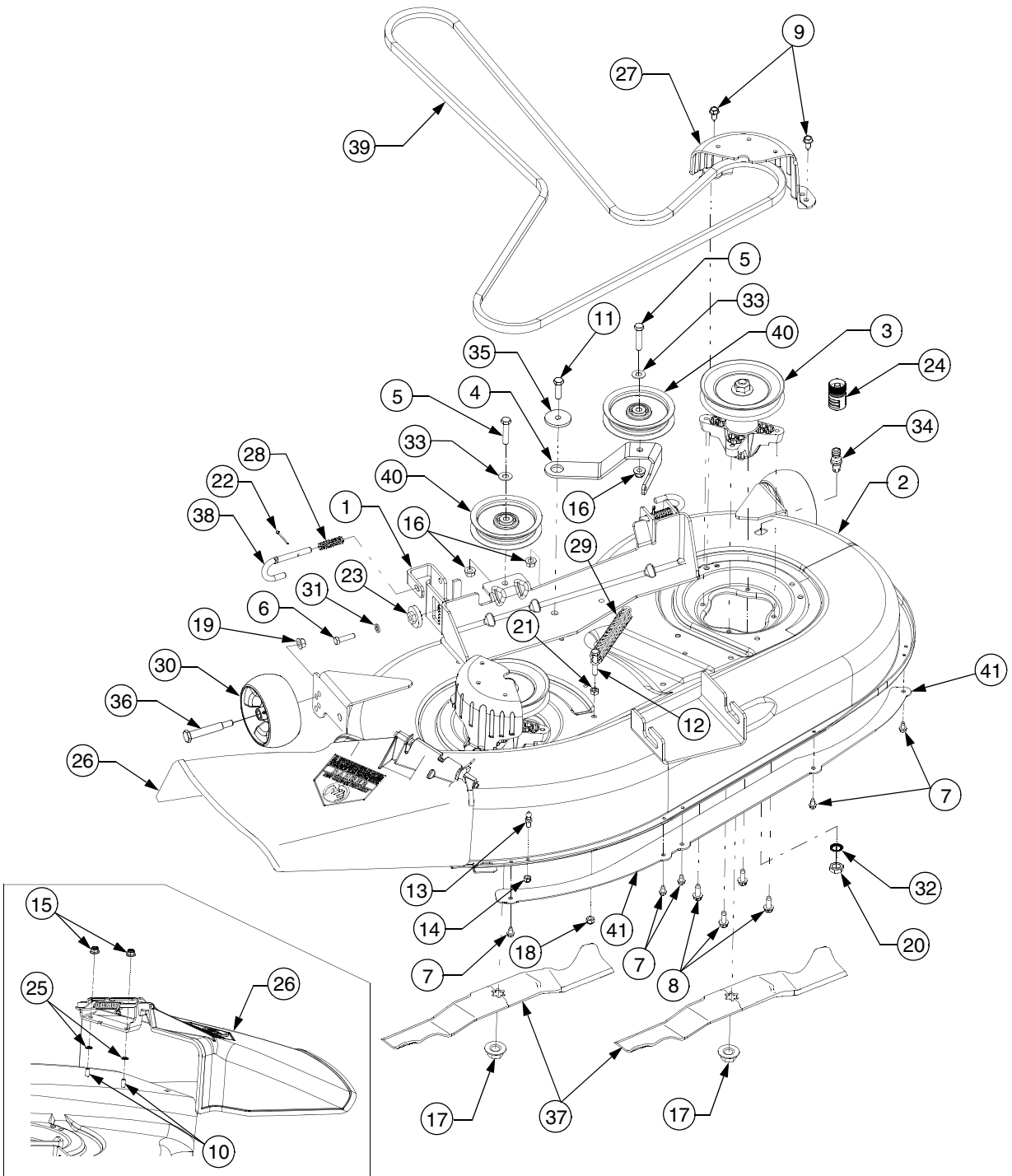
RH TRANSMISSION

REF. NO.	PART NUMBER	DESCRIPTION	QTY.	REF. NO.	PART NUMBER	DESCRIPTION	QTY.
1	HG-70862R	Housing Assembly, Main RH	1	36	HG-50132	Washer, HT, .5 x 1.0 x .032 ..	2
2	HG-70863R	Side Assembly, RH	1	37	HG-51129	Gear, 10T/48T	1
3	HG-51448	Plate, Bypass	1	38	HG-51043	Gear, Jackshaft, 10T	1
4	HG-70723	Pump Block Assembly	1	39	HG-51083	Pin, Jackshaft	1
5	HG-51949	Spacer, .32 x 1.005	1	40	HG-44871	Ring, Spiral Retaining	1
6	HG-70331	Motor Block Assembly	1	41	HG-51633	Gear, Bull, 52T	1
7	HG-9005110-5600	Plug, SAE #6	1	42	HG-44875	Washer, 3/4 x 1.5 x .13	1
8	HG-9004800-2506	Pin, Stainless	2	43	HG-51088	Bearing, Sleeve	1
9	HG-51190	Screw, Hex Self Tapping, 1/4-20 x 1.25	16	44	HG-51954	Axle	1
10	HG-70719	Seal, Brake	1	45	HG-51089	Bushing, .752 x 1.571 x .625	1
11	HG-50016	Bolt, Hex Flange, 3/8-24 x 2.5	3	46	HG-51066	Seal, Lip, .75 x 1.577 x .25 ...	1
12	HG-51626	Seal, Lip, .375 x .75 x .25	1	47	HG-70868R	Kit, Expansion Plate, RH	1
13	HG-51628	Ring, Retaining, .375 Ext.	2	48	HG-71333	Kit, Fan-Pulley	1
14	HG-51625	Rod, Bypass	1	49	HG-71365	Kit, Brake Arm	1
15	HG-51627	Ring, Retaining, .75 Int.	1	50	HG-71143	Kit, Center Section-Filter RH	1
16	HG-52370	Arm, Bypass	1	51	HG-71006	Kit, Bypass Arm	1
17	HG-51630	Ring, Retaining, .375 Push ...	1	52	HG-70911	Kit, Filter	1
18	HG-51048	Swashplate, Trunnion	1	53	HG-51635	Disc, Brake Cog	1
19	HG-51140	Seal, Lip, 18 x 32 x 7	1	54	HG-52315	Fan, 7" 10 Blade	1
20	HG-44130	Washer, Flat, 11/32 x 7/8 x 1/16	1	55	HG-50302	Pulley, 4.5	1
21	HG-51812	Screw, 5/16-24 x 1.0	1	56	HG-51244	Nut, Hex Insert Lock, 1/2-20	1
22	HG-2003014	Spring, Compression	1	57	HG-50752	Screw, Hex Wash. Hd. Tapp 1/4-20	3
23	HG-2003017	Washer, .591 x .787 x .04	1	58	HG-70921	Cap, Vent Assembly	1
24	HG-51062	Shaft, Input	1	59	HG-50591	Fitting, Sraight, 9/6-18	1
25	HG-50315	Bearing, Ball, 17mm x 40 x 12	1	60	HG-50590	Clamp, Pinch	1
26	HG-2000022	Ring, Wire Retaining, .561	1	61	HG-51616	Screw, Hx Patch, 5/16-24 x 1.0	1
27	HG-50951	Spacer	1	62	HG-51947	Bushing, Pilot, 1.125	1
28	HG-51161	Seal, Lip, 17 x 40 x 7	1	63	HG-51948	Washer, Plastic	2
29	HG-50329	Ring, Retaining	2	64	HG-51950	Washer, 1.5 x .34 x .062	1
30	HG-50551	Bearing, Thrust, 30 x 52 x 13	2	65	HG-51399	Spring, Extension	1
31	HG-44371	Washer, Flat, 5/8 x 1.0 x .05	1	66	HG-71095	Kit, Return Assembly RH	1
32	HG-44145	Ring, Retaining	1	67	HG-51731	Hose, .5 x 15.0	1
33	HG-51130	Gear, Pinion, 13T	1	68	HG-71308	Kit, Breather Assembly	1
34	HG-51632	Shaft, Motor	1		HG-70853	Kit, Seal	1
35	HG-51069	Washer, .71 x 1.16 x .04	1		HG-50928	Sealant Tube, 10.3 oz	1

LH TRANSMISSION

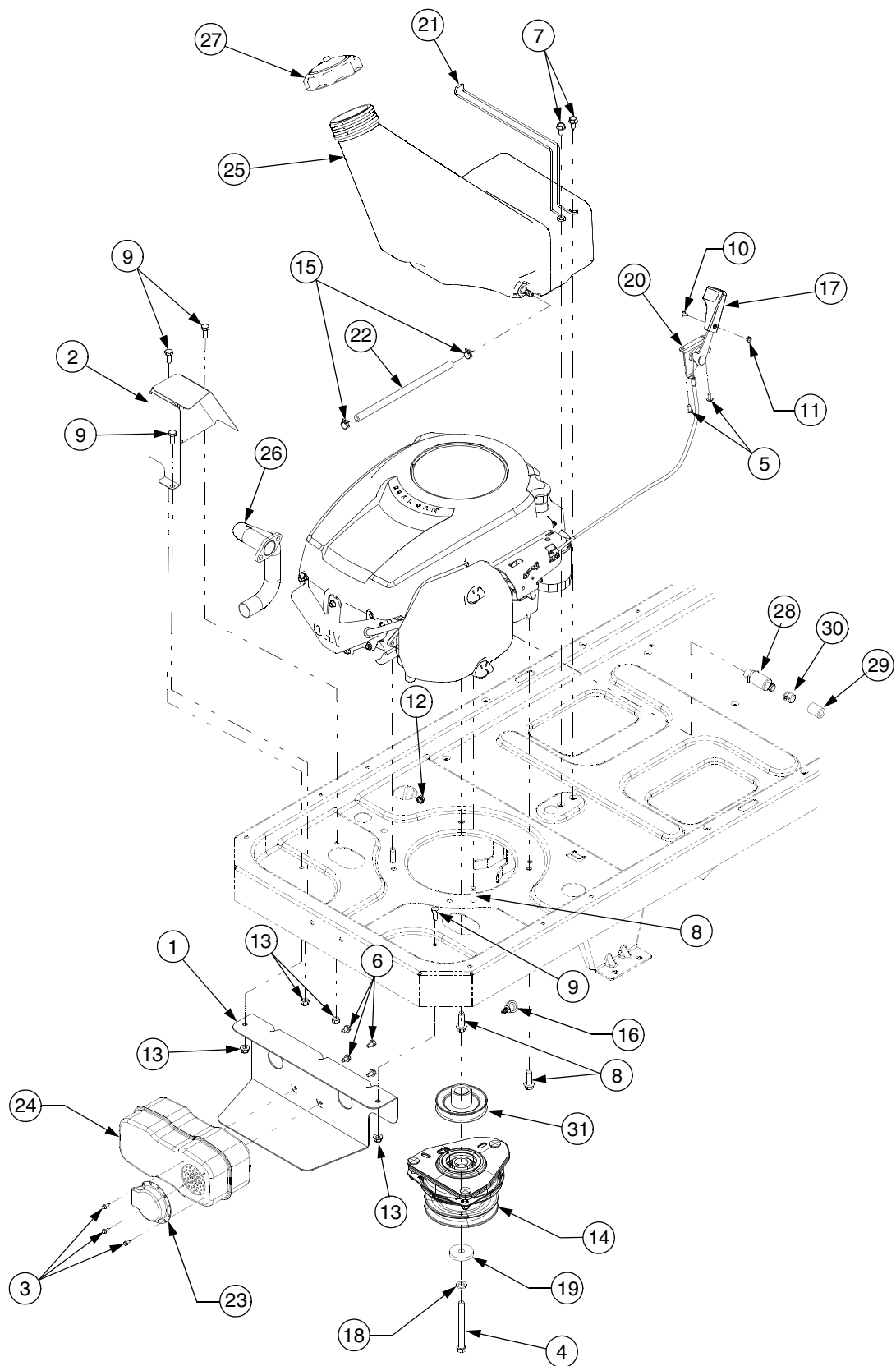
LH TRANSMISSION

REF. NO.	PART NUMBER	DESCRIPTION	QTY.	REF. NO.	PART NUMBER	DESCRIPTION	QTY.
1	HG-70862L	Housing Assembly, Main LH .	1	36	HG-50132	Washer, HT, .5 x 1.0 x .032 ..	2
2	HG-70863L	Side Assembly, LH	1	37	HG-51129	Gear, 10T/48T	1
3	HG-51448	Plate, Bypass	1	38	HG-51043	Gear, Jackshaft, 10T	1
4	HG-70723	Pump Block Assembly	1	39	HG-51083	Pin, Jackshaft	1
5	HG-51949	Spacer, .32 x 1.005	1	40	HG-44871	Ring, Spiral Retaining	1
6	HG-70331	Motor Block Assembly	1	41	HG-51633	Gear, Bull, 52T	1
7	HG-9005110-5600	Plug, SAE #6	1	42	HG-44875	Washer, 3/4 x 1.5 x .13	1
8	HG-9004800-2506	Pin, Stainless	2	43	HG-51088	Bearing, Sleeve	1
9	HG-51190	Screw, Hex Self Tapping, 1/4-20 x 1.25	16	44	HG-51954	Axle	1
10	HG-9008000-0125	Seal, Lip, .5 x .88 x .25	1	45	HG-51089	Bushing, .752 x 1.571 x .625	1
11	HG-50016	Bolt, Hex Flange, 3/8-24 x 2.5	3	46	HG-51066	Seal, Lip, .75 x 1.577 x .25 ...	1
12	HG-51626	Seal, Lip, .375 x .75 x .25	1	47	HG-70868I	Kit, Expansion Plate, LH	1
13	HG-51628	Ring, Retaining, .375 Ext.	2	48	HG-71333	Kit, Fan-Pulley	1
14	HG-51625	Rod, Bypass	1	49	HG-71356	Kit, Brake Arm	1
15	HG-51627	Ring, Retaining, .75 Int.	1	50	HG-71142	Kit, Center Section-Filter LH	1
16	HG-51910	Arm, Bypass	1	51	HG-71006	Kit, Bypass Arm	1
17	HG-51630	Ring, Retaining, .375 Push ...	1	52	HG-70911	Kit, Filter	1
18	HG-51048	Swashplate, Trunnion	1	53	HG-51635	Disc, Brake Cog	1
19	HG-51140	Seal, Lip, 18 x 32 x 7	1	54	HG-52315	Fan, 7" 10 Blade	1
20	HG-44130	Washer, Flat, 11/32 x 7/8 x 1/16	1	55	HG-50302	Pulley, 4.5	1
21	HG-51812	Screw, 5/16-24 x 1.0	1	56	HG-51244	Nut, Hex Insert Lock, 1/2-20	1
22	HG-2003014	Spring, Compression	1	57	HG-50752	Screw, Hex Wash. Hd. Tapp 1/4-20	3
23	HG-2003017	Washer, .591 x .787 x .04	1	58	HG-70921	Cap, Vent Assembly	1
24	HG-51062	Shaft, Input	1	59	HG-50591	Fitting, Sraight, 9/6-18	1
25	HG-50315	Bearing, Ball, 17mm x 40 x 12	1	60	HG-50590	Clamp, Pinch	1
26	HG-2000022	Ring, Wire Retaining, .561	1	61	HG-51616	Screw, Hx Patch, 5/16-24 x 1.0	1
27	HG-50951	Spacer	1	62	HG-51947	Bushing, Pilot, 1.125	1
28	HG-51161	Seal, Lip, 17 x 40 x 7	1	63	HG-51948	Washer, Plastic	2
29	HG-50329	Ring, Retaining	2	64	HG-51950	Washer, 1.5 x .34 x .062	1
30	HG-50551	Bearing, Thrust, 30 x 52 x 13	2	65	HG-51399	Spring, Extension	1
31	HG-44371	Washer, Flat, 5/8 x 1.0 x .05	1	66	HG-71095	Kit, Return Assembly RH	1
32	HG-44145	Ring, Retaining	1	67	HG-51731	Hose, .5 x 15.0	1
33	HG-51130	Gear, Pinion, 13T	1	68	HG-71308	Kit, Breather Assembly	1
34	HG-51845	Shaft, Motor	1		HG-70853	Kit, Seal	1
35	HG-51069	Washer, .71 x 1.16 x .04	1		HG-50928	Sealant Tube, 10.3 oz	1

42" MOWER DECK

42" MOWER DECK

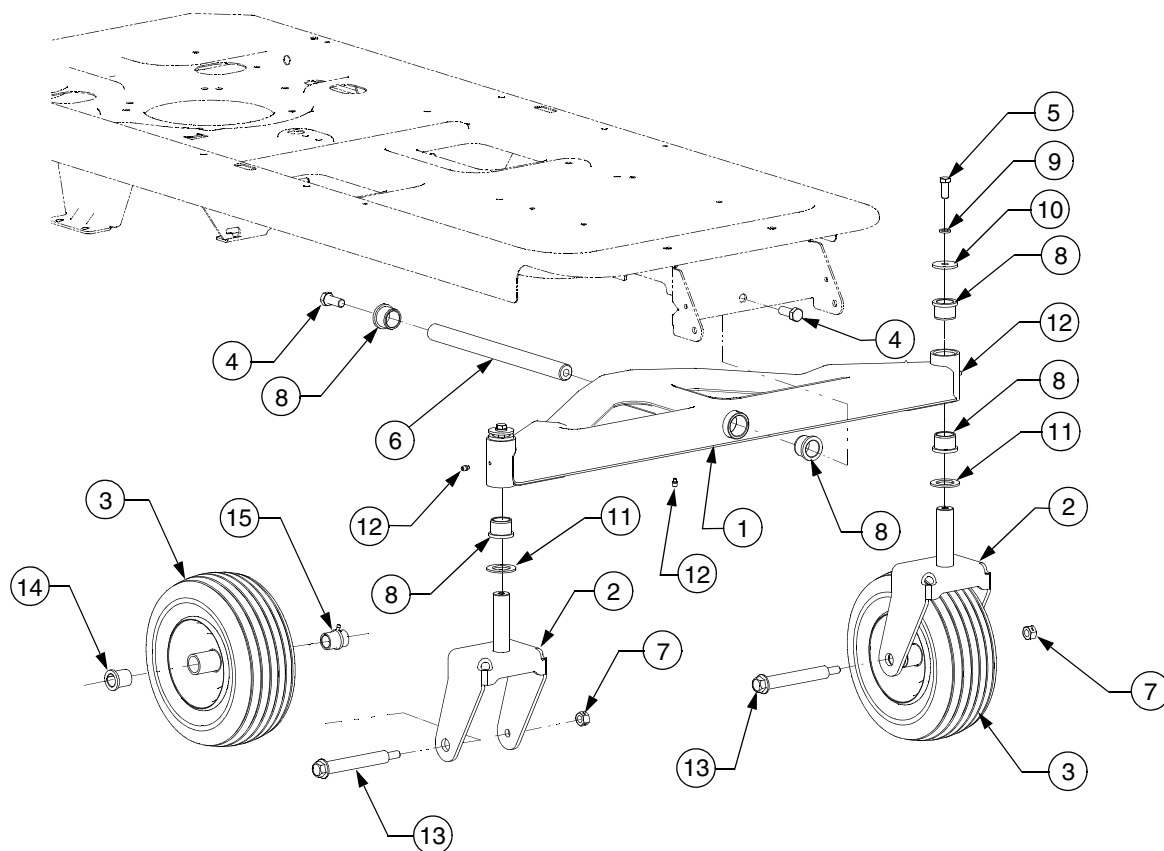
REF. NO.	PART NUMBER	DESCRIPTION	QTY.
1	603-04156	Bracket, Deck Lift	1
2	603-04335	Housing, Deck	1
	777S32599	Graphic, Danger	1
	777S30503	Graphic, Danger	1
	777I22281	Graphic, Instruction	1
3	618-0427	Spindle Assembly	1
	756-1188	Pulley	1
4	703-05824	Arm, Idler	1
5	710-0347	Screw, Hex Cap, 3/8-16 x 1.75 GR5	2
6	710-0528	Screw, Hex Cap, 5/16-18 x 1.25 GR5	1
7	710-0599	Screw, Hex Wash. Hd. Tapp	5
		1/4-20 x .5	
8	710-0650	Screw, Hex Wash. Hd. Tapp	8
		5/16-18 x .875	
9	710-0726	Screw, Hex Wash. Hd. Tapp	4
		5/16-12 x .75	
10	710-0751	Screw, Hex Cap, 1/4-20 x .62 GR5 ..	2
11	710-3005	Screw, Hex Cap, 3/8-16 x 1.25 GR5	1
12	710-3180	Screw, Hex Cap, 5/16-18 x 1.75 GR5	1
13	711-04069	Pin, Grass Catcher, 1/4-20	1
14	712-0324	Nut, Hex Insert Lock, 1/4-20 GR8	1
15	712-04064	Nut, Hx Insert Flange Lck, 1/4-20 GR5	2
16	712-04065	Nut, Hx Insert Flange Lck, 3/8-16 GrF	3
17	712-0417A	Nut, Hex Flange, 5/8-18	2
18	712-0429	Nut, Hex Insert Lock, 5/16-18 GR5 ..	1
19	712-0431	Nut, Hex Flange Lock, 3/8-16 GrF	2
20	712-0641	Nut, Hex, M16-1.5	1
21	712-3010	Nut, Hex, 5/16-18 GR5	1
22	714-0470	Pin, Cotter, 1/8 x 1.25	2
23	717-1553B	Gear, Deck Adjustment	1
24	721-04041	Adapter, Water Nozzle	1
25	726-0233	Nut, Push, .25 x .5	2
26	731-1032B	Chute Assembly, Discharge	1
	777S30284	Graphic, Danger	1
27	731-2231B	Cover, Belt	2
28	732-0306	Spring, Compression	2
29	732-0459	Spring, Extension, .94 Dia. x 6.74	1
30	734-04155	Wheel, Deck Ball, 5.0	2
31	736-0119	Washer, Lock, 5/16	1
32	736-0760	Washer, Lock,	1
33	736-3072	Washer, Flat, .38 x .93 x .11 HT	2
34	737-04003C	Nozzle, Deck Water	1
35	738-04162A	Spacer, Shoulder, .884 x .19	1
36	738-3056	Screw, Shoulder, .5 x 2.5:3/8-16	2
37	942-0616A	Blade, 3 in 1, 21.23	2
38	747-1116	Rod, Deck Hanger	2
39	754-04045	Belt, V, Type A Sec x 109	1
40	756-04129	Pulley, Idler, 4.25 Dia.	2
41	783-1146A	Skirt, Deck	1

ENGINE CONNECTIONS

ENGINE CONNECTIONS

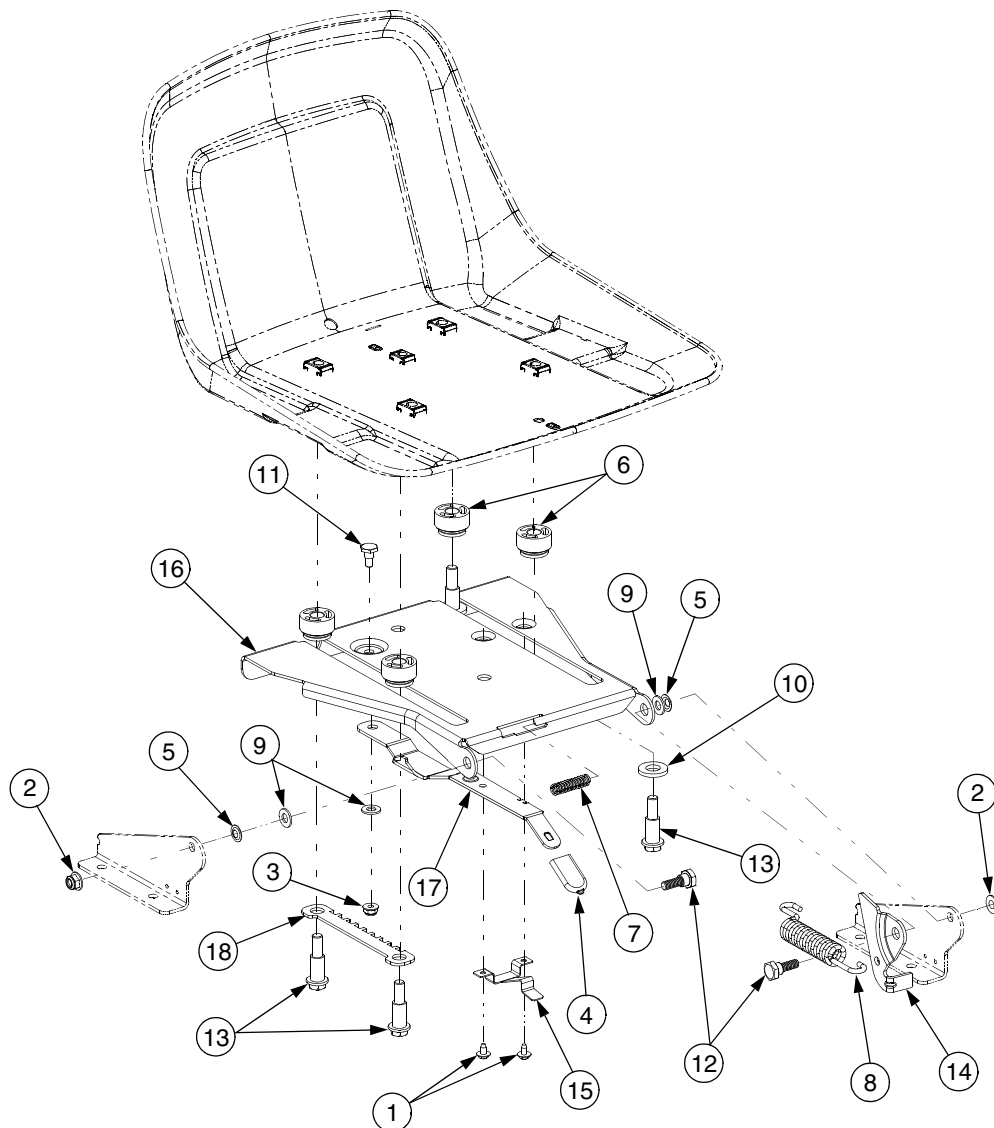
REF. NO.	PART NUMBER	DESCRIPTION	QTY.
1	703-05441A	Bracket, Muffler Mounting	1
2	703-05870	Shield, Muffler Tube Heat	1
3	710-0227	Screw, Hex Wash. Hd. Tapp #8-18 x .5	3
4	710-04248	Screw, Hex Cap, 7/16-20 x 4.0 GR5	1
5	710-04261	Screw, Hex Wash. Hd. Tapp #12-16 x .5	2
6	710-0599	Screw, Hex Wash. Hd. Tapp 1/4-20 x .5	4
7	710-0726	Screw, Hex Wash. Hd. Tapp 5/16-12 x .75	2
8	710-1315	Screw, Hex Wash. Hd. Tapp 3/8-16 x 1.25	4
9	710-3008	Screw, Hex Cap, 5/16-18 x .75 GR5	4
10	710-3217	Screw, Truss Hd. Mach. #8-32 x .375	1
11	712-0142	Nut, Hex, #8-32	1
12	712-0271	Nut, Hex Sems, 1/4-20	1
13	712-04063	Nut, Hx Insert Flange Lck, 5/16-18 GrF	4
14	717-04183	Clutch Assembly, Electric PTO	1
15	726-0205	Clamp, Hose	2
16	726-3055	Clip, Cable Retainer	1
17	731-04914	Knob, Throttle Control	1
18	736-0171	Washer, Lock, 7/16	1
19	736-04131	Washer, Flat, .438 x 1.75 x .25	1
20	746-04161	Cable, Throttle, 39.0 Lg	1
21	747-04228A	Wire, Tank Mounting	1
22	751-0535-12	Hose, Fuel Line	6.5in
23	751-0564A	Deflector, Muffler	1
24	751-0617A	Muffler	1
25	751-10057C	Tank, Fuel, 3.0 Gal.	1
26	751-10251	Pipe, Exhaust	1
27	751-3124B	Cap, Fuel	1
28	751-3140	Valve, Oil Drain	1
29	751-3141	Hose, Oil Drain Extension	1
30	751-3142	Cap, Oil Drain Valve	1
31	756-0979A	Pulley, Drive	1

FRONT AXLE



REF. NO.	PART NUMBER	DESCRIPTION	QTY.
1	603-04148A	Axle, Front Pivot	1
2	603-04308	Bracket, Castor Wheel	2
3	634-04212	Wheel Assembly, 11.0 x 4.0 x 5.0	2
4	710-04186	Screw, Hex Lock, 1/2-13 x 1.25 GR5	2
5	710-0514	Screw, Hex Cap, 3/8-16 x 1.0 GR5 ...	2
6	711-04228	Shaft, Axle	1
7	712-3022	Nut, Hex Lock, 1/2-13 GRB	2
8	731-05500	Bearing, Flange, 1.0 x 1.246	6
9	736-0169	Washer, Lock, 3/8	2
10	736-0227	Washer, Flat, .39 x 1.5 x .134	2
11	736-0250	Washer, Flat, 1.0 x 1.75 x .107	2
12	737-3000	Fitting, Lube, 3/16 Drive	3
13	738-04182	Screw, Shoulder, .75 x 4.75:7/16-14	2
14	741-0516B	Bearing, Flange, .76 x 1.0 x 1.2	2
15	741-0990B	Bearing, Flange, .76 ID w/Lube Ftg.	2

SEAT ADJUSTMENT



REF. NO.	PART NUMBER	DESCRIPTION	QTY.	REF. NO.	PART NUMBER	DESCRIPTION	QTY.
1	710-1268	Screw, Hx. Wash. Hd. Tapp #10-16 x .375	2	9	736-0275	Washer, Flat, .344 x .688 x .065	3
2	712-04063	Nut, Hx Insert Flange Lck, 5/16-18 GrF	2	10	736-3019	Washer, Flat, .531 x 1.062 x .134 HT	2
3	712-04064	Nut, Hx Insert Flange Lck, 1/4-20 GrF	1	11	738-0137A	Screw, Shoulder, .34 x .285:1/4-20	1
4	720-0309A	Grip, Seat Adjustment	1	12	738-0296	Screw, Shoulder, .437 x .268:5/16-18	2
5	726-0201	Nut, Speed, .3125	2	13	738-0966A	Screw, Shoulder, .5 x .925:3/8-16 ...	4
6	731-04074	Spacer, Seat Adjustment	4	14	783-0209D	Bracket, Seat Lift	1
7	732-0499	Spring, Compression, .41 x 1.5	1	15	783-0611	Stop, Seat Adjustment	1
8	732-1184	Spring, Extension, .84 Dia. x 4.6	1	16	783-0738C	Bracket, Seat Pivot	1
				17	783-0739A	Lever, Seat Adjustment	1
				18	783-0753	Index Bracket, Seat Adjustment	1