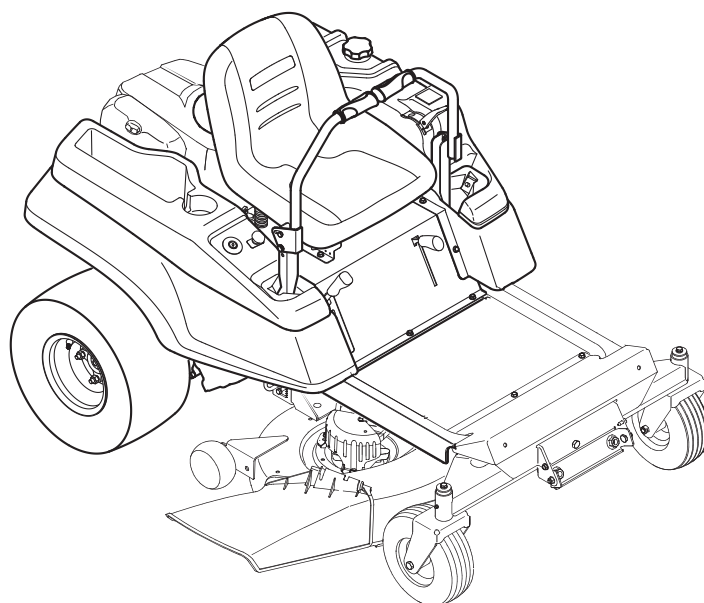

Cub Cadet.

ILLUSTRATED PARTS MANUAL



42" RZT Series Tractor

CUB CADET LLC, P.O. BOX 361131 CLEVELAND, OHIO 44136-0019

To The Owner

Thank You

Thank you for purchasing a Cub Cadet Zero-Turn Tractor. It was carefully engineered to provide excellent performance when properly operated and maintained.

All information in this manual is relative to the most recent product information available at the time of printing. Please be aware that this Illustrated Part's Manual may cover a range of product specifications for various models.

Components listed and/or illustrated in this manual may not be applicable to all models. We reserve the right to change product specifications, designs and equipment without notice and without incurring obligation.

Throughout this manual, all references to *right* (RH) and *left* (LH) are observed from the operating position.

Table of Contents

Axle, Front	8	Hour Meter	5
Battery	5	Labels	38
Mower Deck	12	Muffler	9
Lapbar Levers	10	PTO Lever	5
Consoles	4	Seat	4
Drive System	7	Solenoid	5
Electrical Schematic	36	Switches, Interlock	5
Engine, Kohler SV600-0221	14-22	Throttle Control	9
Engine, Kohler SV530-0217	24-35	Choke Control	9
Engine Accessories	9	Transmission	7
Frame	3	Wheels, Rear	7
Fuel Tank	4	Wheels, Front	8
Deck Lift Handle/Linkage	10		

Record Product Information

To ease in ordering replacement parts, please locate the model plate on the equipment and record the information in the provided area to the right. You can locate the model plate by looking beneath the seat.

MODEL NUMBER

--	--	--	--	--	--	--	--	--	--	--

SERIAL NUMBER

--	--	--	--	--	--	--	--	--	--	--

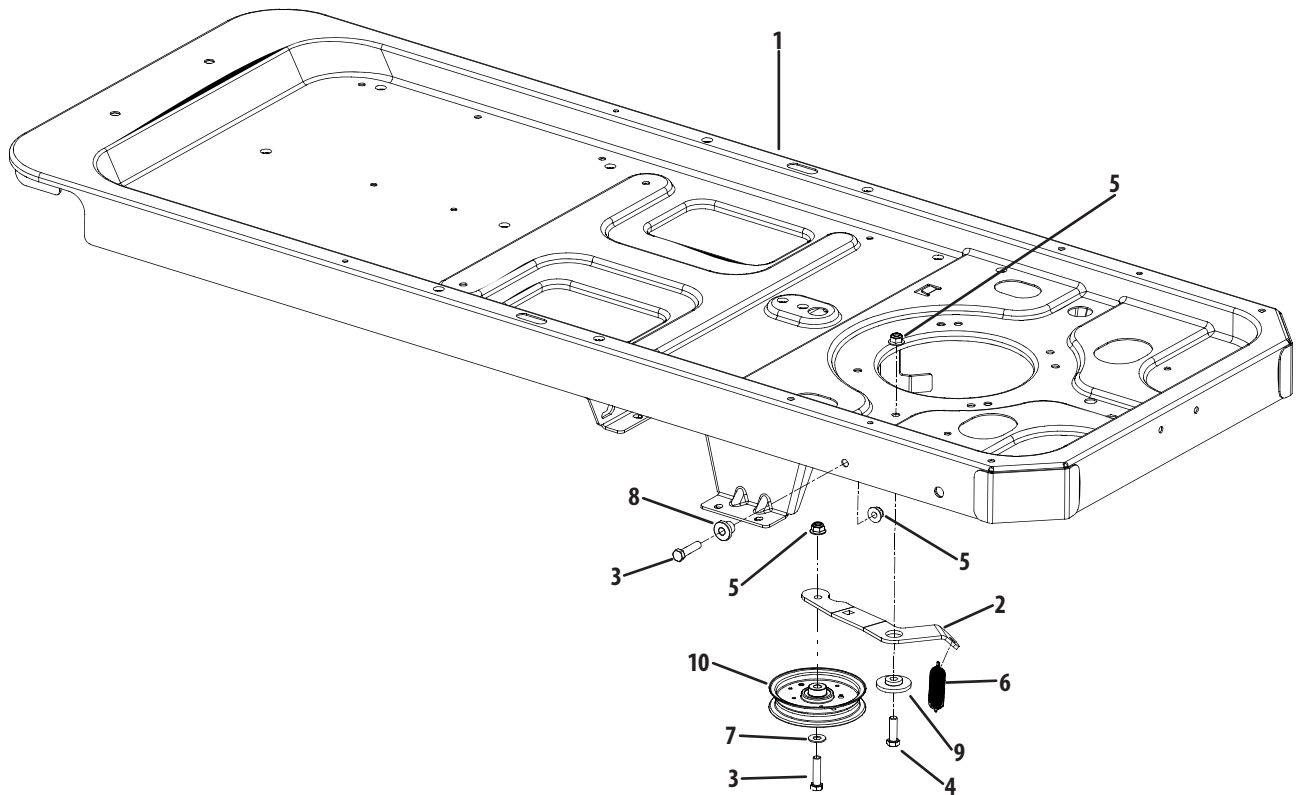
Painted Parts

When ordering painted service parts, a four digit color suffix must be added to the part number (e.g. 783-XXXX-0637). Please refer to the table below for current color codes:

0637	Black
4021	Yellow (Cub Cadet)
0499	Beige (Cub Cadet)

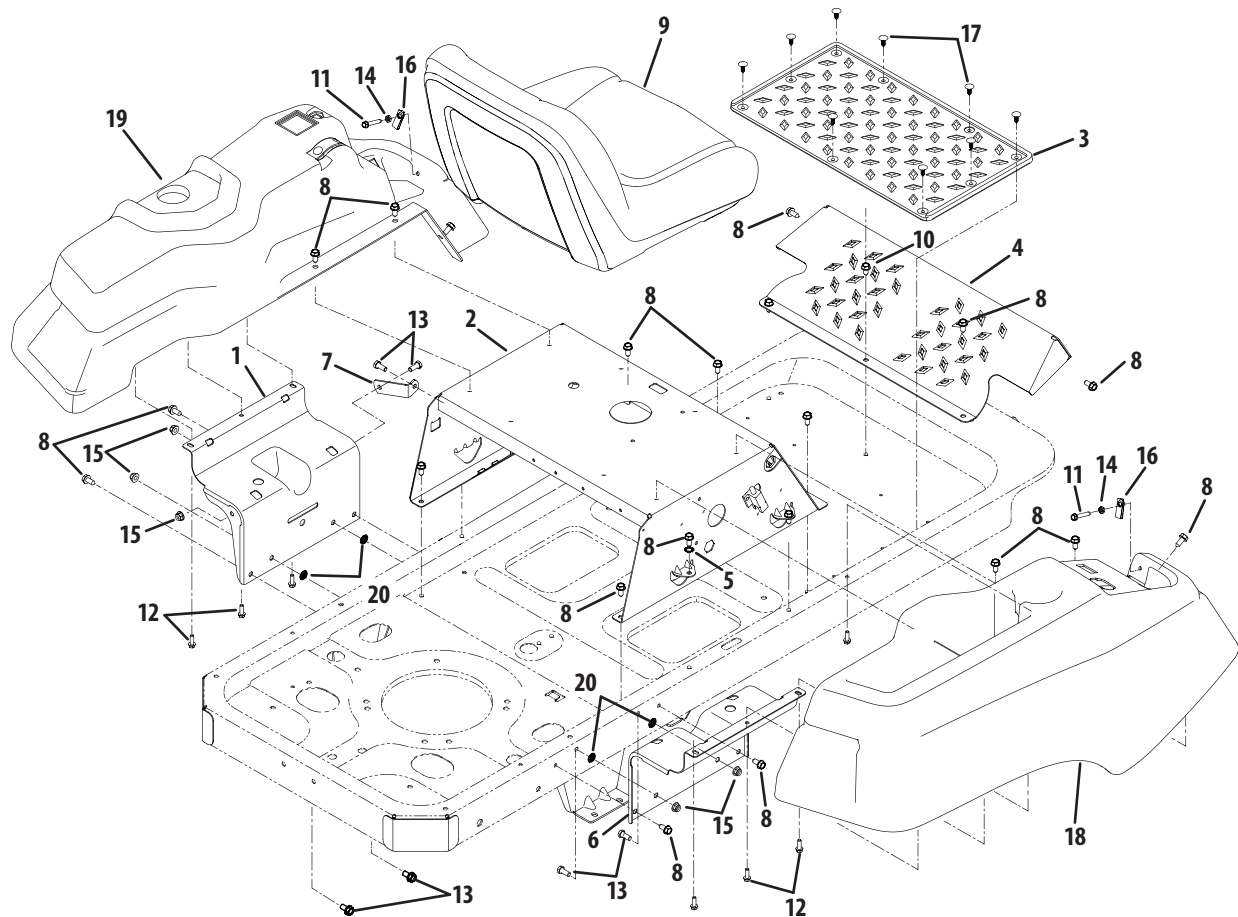
0685	Blue (Cub Cadet)
0691	Black Jack (Cub Cadet Commercial)

Frame & Drive Idler Assembly



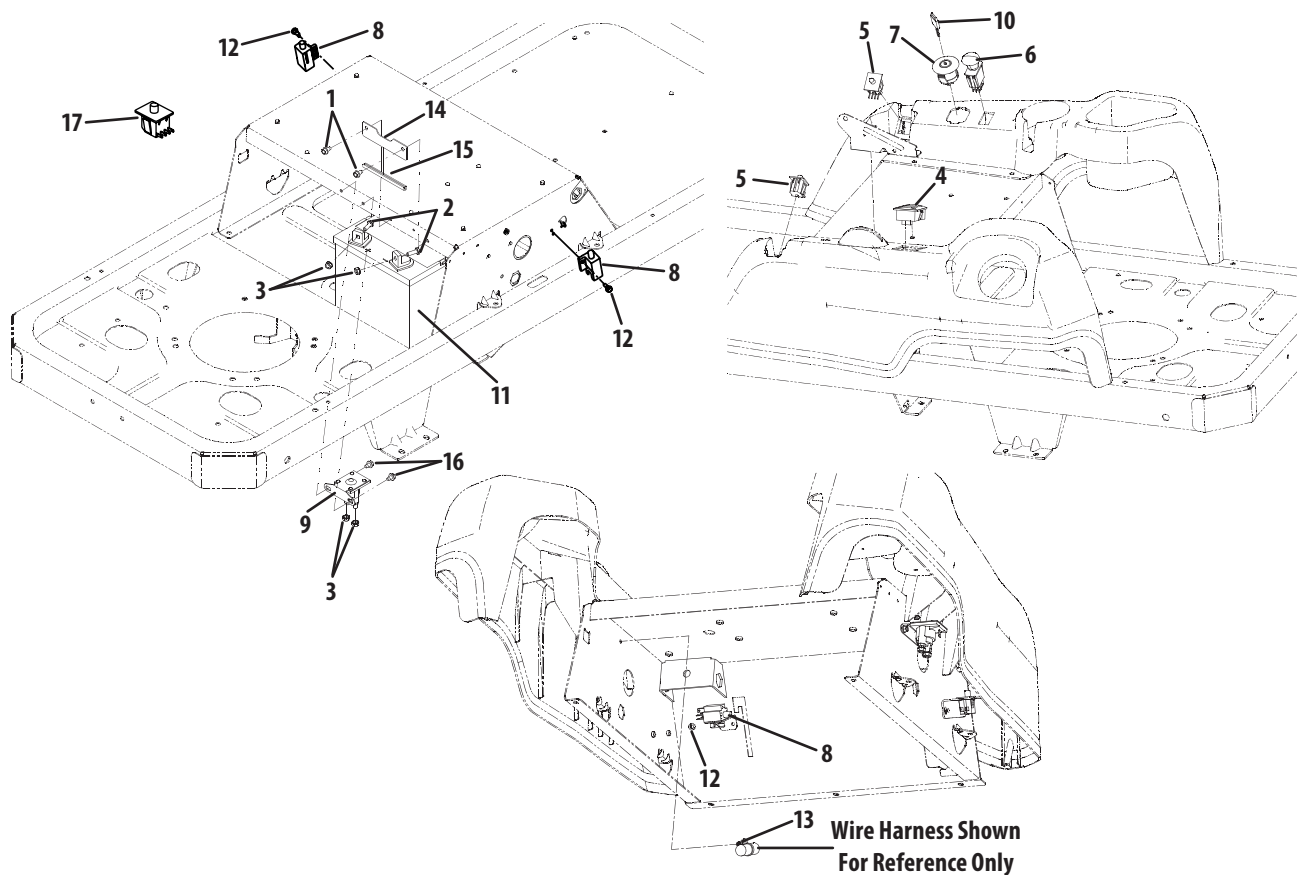
Ref.	Part Number	Description
1	603-04691	Frame Assembly
2	703-05829-0637	Drive Idler Arm
3	710-0520	Hex Screw, $\frac{3}{8}$ -16 x 1.5
4	710-3005	Hex Screw, $\frac{3}{8}$ -16 x 1.25
5	712-04065	Flange Nut, $\frac{3}{8}$ -16
6	732-0626	Extension Spring, .75 x 5.06
7	936-0300	Flat Washer, .408 x .875 x .059
8	738-04058	Shoulder Spacer, .39 x 1.0 x .7
9	738-04162A	Shoulder Spacer, .884 x .19
10	756-04129B	Idler Pulley, 4.25 Dia.

Operator's Platform



Ref	Part Number	Description
1	603-04564	Console Mount Bracket
2	603-04663	Seat Frame
3	735-04082B	Foot Pad
4	703-05373B	Foot Rest
5	736-0148	Lock Washer, $\frac{3}{8}$
6	703-06451	Console Mount Bracket
7	703-06623	Fuel Tank Support Bracket
8	710-04484	Hex Washer Screw, $\frac{5}{16}$ -18 x .750
9	757-04098	High-Back Seat
10	710-0604A	Hex Washer Screw, $\frac{5}{16}$ -18 x .825
11	710-0778	Hex Washer Screw, $\frac{1}{4}$ -20 x 1.500
12	710-0895	Hex Washer Screw, $\frac{1}{4}$ -15 x .750
13	710-3008	Hex Screw, $\frac{5}{16}$ -18 x .75

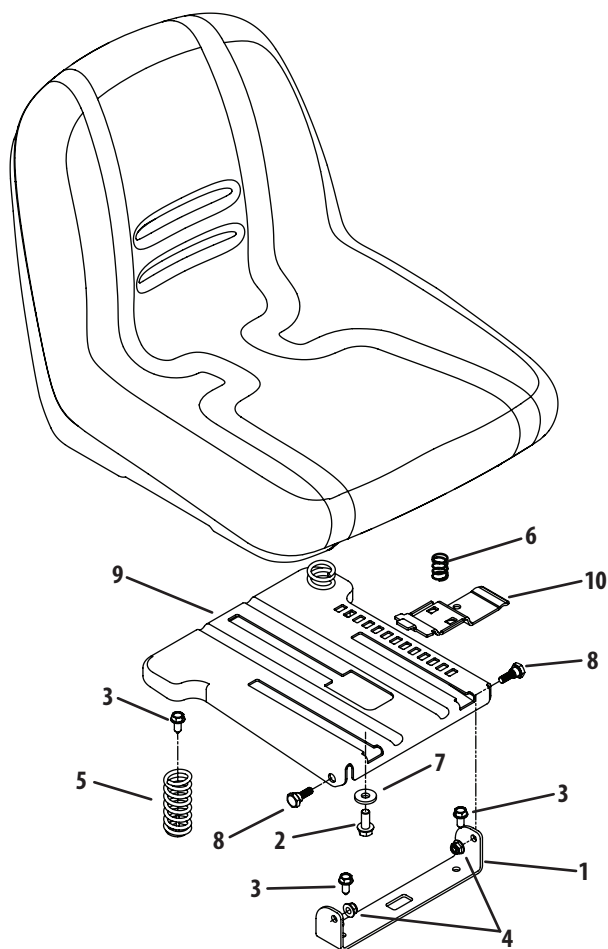
Ref	Part Number	Description
14	912-0298	Jam Nut, $\frac{1}{4}$ -20
15	712-04063	Flange Lock Nut, $\frac{5}{16}$ -18
16	712-04092	U-Type Nut, $\frac{1}{4}$ -20
17	726-3046	Ratchet Clip, .250
18	731-06233	RH Console
19	731-06263	LH Console
20	726-0201	Speed Nut, .3125
NS	N/A	Fuel Tank Assembly
—	935-0149	Fuel Tank Bushing
—	751-10442	Fuel Pick-Up Fitting
—	751-10692	Fuel Tank, 3.5 Gallon
—	751-10703A	Fuel Cap



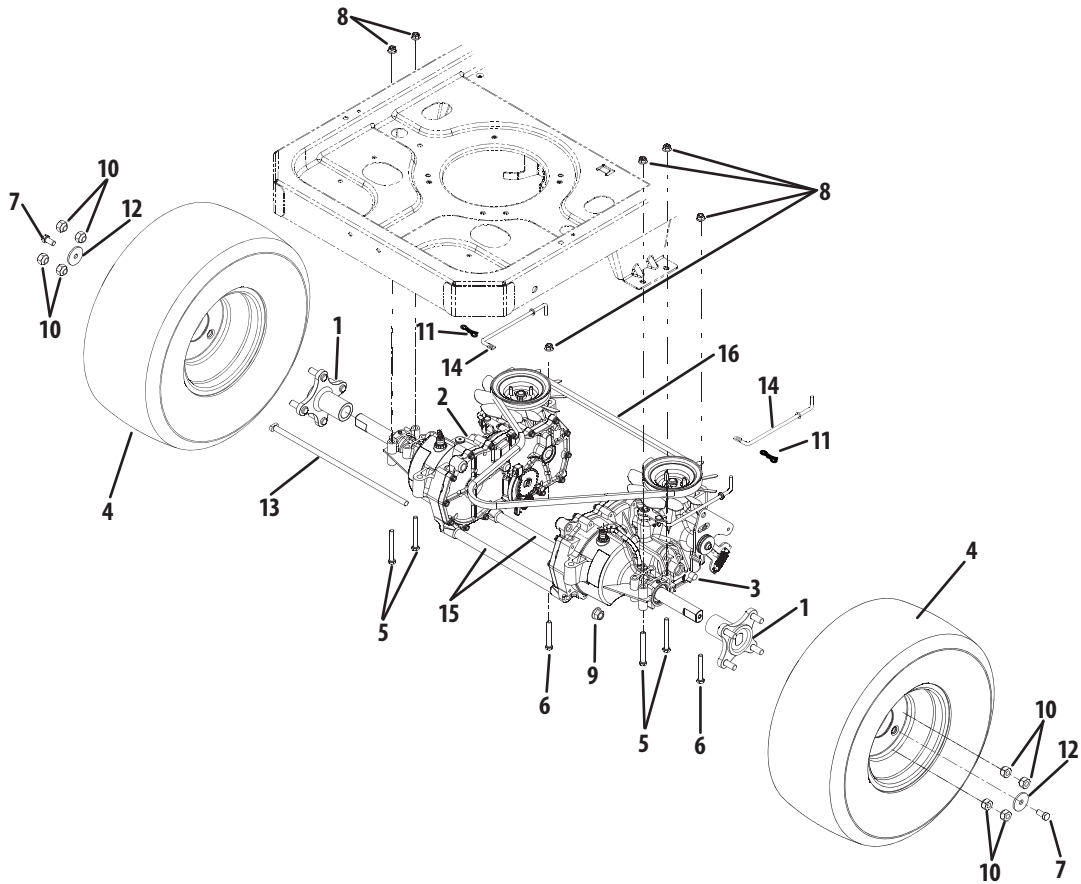
Ref.	Part Number	Description
1	710-0599	Hex Screw, 1/4-20 x .5
2	710-3015	Hex Screw, 1/4-20 x .75
3	712-0271	Hex Nut, 1/4-20
4	925-04022B	Hour Meter
5	925-04165	Neutral Switch
6	925-04174	PTO Switch
7	925-04228	Ignition Switch
8	725-04363	Interlock Switch
9	725-04439	Solenoid

Ref.	Part Number	Description
10	925-2054A	Key
11	925-1707D	Battery
12	738-04237A	Shoulder Screw, #10-32 x .500
13	726-0470	Cable Tie
14	703-05894	Batter Hold-down
15	731-0511	Trim Strip
16	710-0653	Hex Screw, 1/4-20 x .375
17	925-04040	Seat Switch

Seat Adjustment



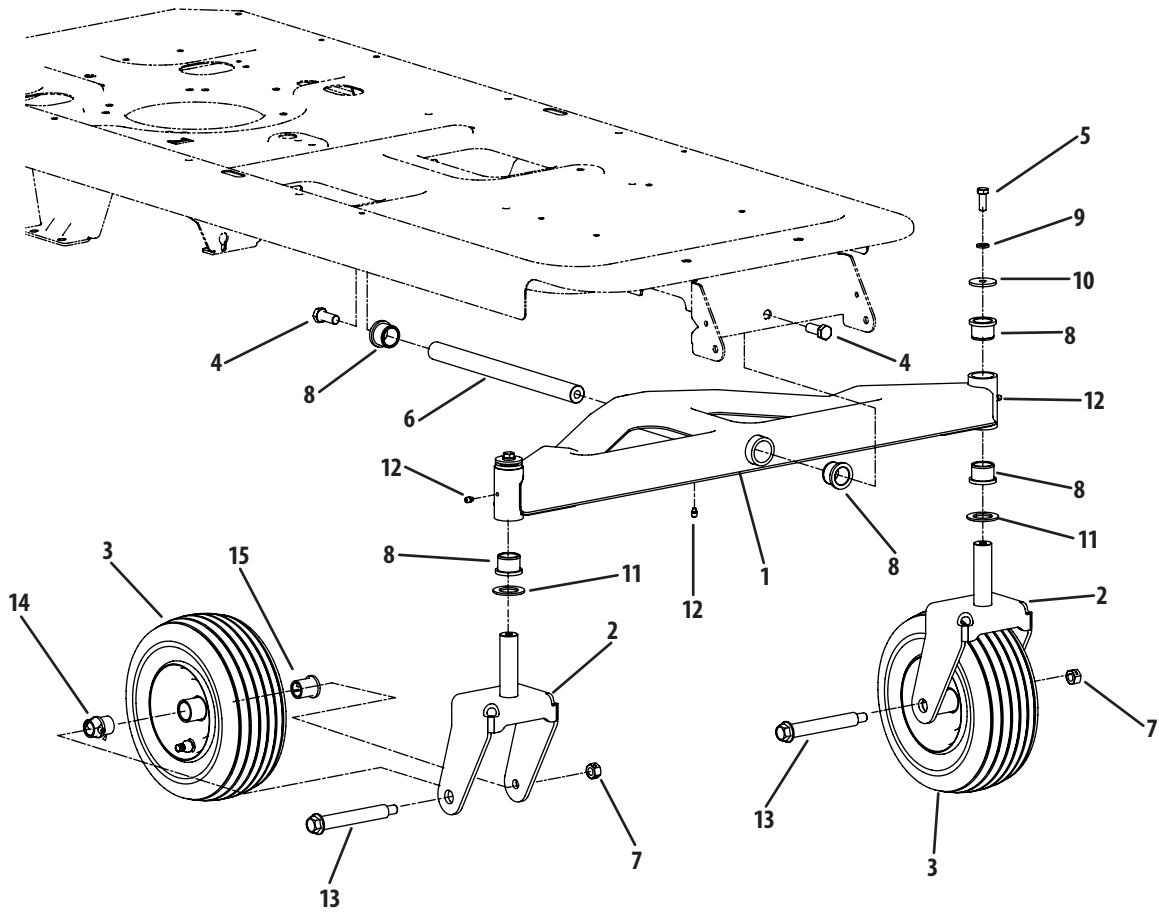
Ref.	Part Number	Description
1	703-06941	Seat Bracket
2	710-04482	Hex Flange Bolt, $\frac{3}{8}$ -16 x .875
3	710-04484	Hex Washer Screw, $\frac{5}{16}$ -18 x .750
4	712-04063	Flange Lock Nut, $\frac{5}{16}$ -18
5	732-04035	Compression Spring
6	732-04563	Compression Spring
7	736-0258	Flat Washer, .385 x 1.0 x .135
8	938-0296	Shoulder Screw, .437 x .268 x $\frac{5}{16}$ -18
9	783-06049	Seat Mount Bracket
10	783-06050	Seat Adjustment Lever



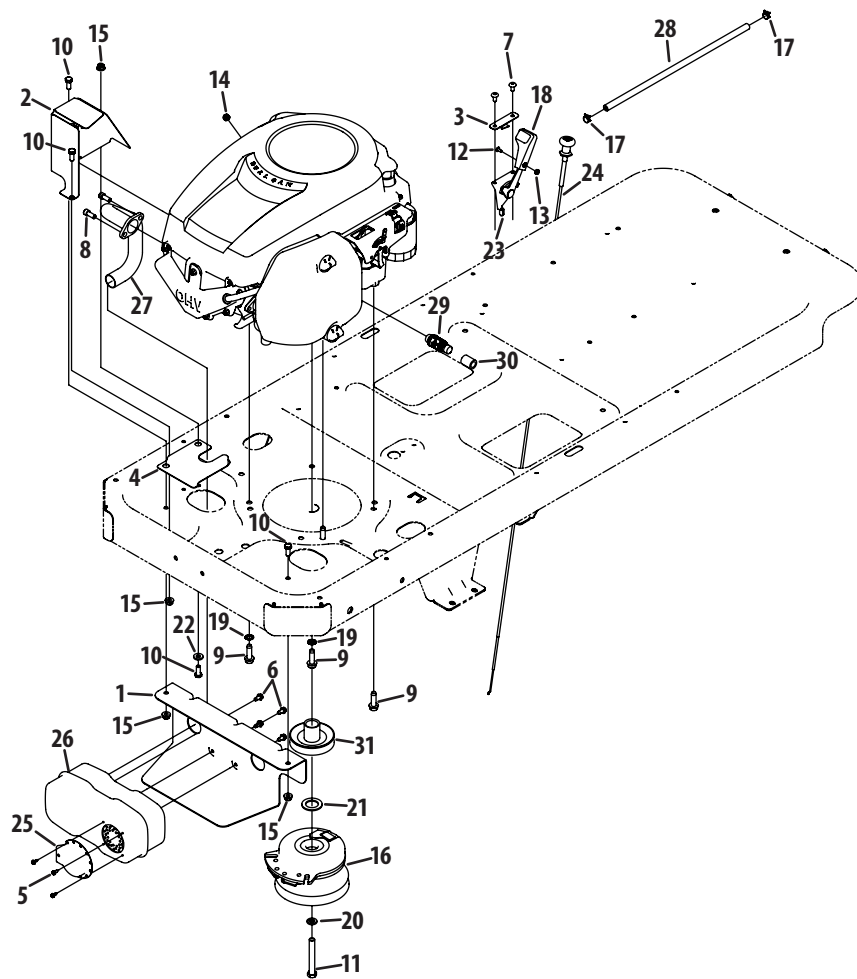
Ref.	Part Number	Description
1	918-04317	Wheel Hub, 7/16-14 x 1.6
2	918-04431A	Transmission Assembly, LH
3	918-04432A	Transmission Assembly, RH
4	634-04293	Wheel Assembly, 18 x 8.5-8
5	710-0176	Hex Cap Screw, 5/16-18 x 2.75
6	710-0395	Hex Cap Screw, 5/16-18 x 2.25
7	710-3119	Hex Cap Screw, 3/8-16 x .75
8	712-04063	Hex Flange Nut, 5/16-18

Ref.	Part Number	Description
9	712-0459	Hex Flange Nut, 7/16-20
10	712-3050	Lug Nut, 7/16-14
11	714-04040	Bow-Tie Cotter Pin
12	936-0227	Flat Washer, .39 x 1.5 .134
13	738-04192	Rod, .405 x 14.0
14	747-04217C	Bypass Rod
15	750-04561	Tube, .45 x .69 x 10.2
16	954-04043A	V-Belt

Front Axle



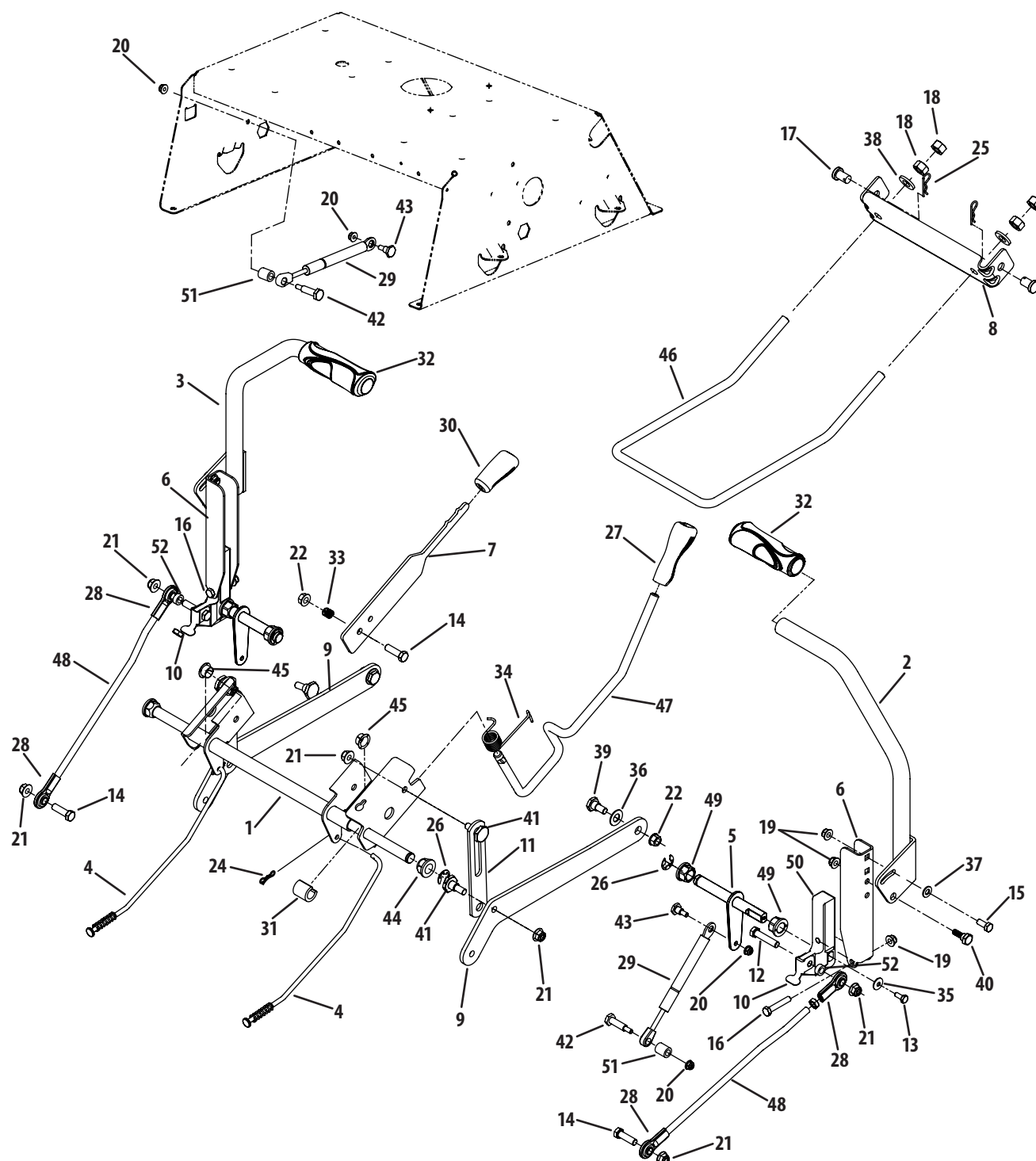
Ref.	Part Number	Description
1	603-04148C	Front Pivot Axle
2	603-04308	Castor Wheel Bracket
3	634-04212B	Wheel Assembly, 11.0 x 4.0 x 5.0
—	934-0255	Air Valve
4	710-04186	Hex Lock Screw, 1/2-13 x 1.25
5	710-0514	Hex Cap Screw, 3/8-16 x 1.0
6	911-04228	Axle Shaft
7	712-3022	Hex Lock Nut, 1/2-13
8	731-05500	Flange Bearing, 1.0 x 1.246
9	936-0169	Lock Washer, 3/8
10	936-0227	Flat Washer, .39 x 1.5 x .134
11	736-0250	Flat Washer, 1.0 x 1.75 x .107
12	937-3000	Lube Fitting, 3/16
13	738-04182A	Shoulder Screw, 7/16-14 x .75 x 4.75
14	741-0516B	Flange Bearing, .76 x 1.0 x 1.2
15	741-0990B	Flange Bearing, .76 ID w/Lube Ftg.



Ref.	Part Number	Description
1	703-05441A	Muffler Mount Bracket
2	703-05870	Muffler Heat Shield
3	703-05908	Throttle Bracket (Aus.)
4	703-07712A	Heat Shield
5	710-0227	Hex Washer Screw, #8-18 x 0.500
6	710-0599	Hex Washer Screw, 1/4-20 x 0.500
7	710-1017	Screw, 1/4-14 x 0.625
8	710-1314A	Socket Screw, 5/16-18 x .750
9	710-1315	Hex Washer Screw, 3/8-16 x 1.250 (Aus.)
—	710-04683	Hex Washer Screw, 3/8-16 x 1.250 (U.S.)
10	710-3008	Hex Screw, 5/16-18 x .75
11	710-3157A	Hex Lock Screw, 7/16-20 x 3.25
12	710-3217	Machine Screw, #8-32 x 0.375
13	712-0142	Hex Nut, #8-32
14	712-0271	Sems Nut, 1/4-20
15	712-04063	Flange Lock Nut, 5/16-18
16	917-04376A	Electric PTO

Ref.	Part Number	Description
17	726-0205	Hose Clamp, .490
18	731-04914	Throttle Control Knob
19	736-0148	External Tooth Lock Washer, 3/8
20	936-0171	Lock Washer, 7/16
21	736-0277	Flat Washer, 1.031 x 1.620 x .095
22	936-3008	Flat Washer, .344 x .750 x .120
23	746-04161	Throttle/Choke Control Cable
24	746-04235	Choke Control (Aus.)
25	751-0564B	Muffler Deflector
26	751-0617C	Single Inlet Muffler
27	751-10251	Exhaust Pipe
28	751-10349	Low Permeation Fuel Hose
29	951-10517A	Oil Drain
30	751-3141-14	Oil Drain Extension Hose
31	756-04376	PTO Pulley
NS	731-1999	Choke Plug (U.S.)

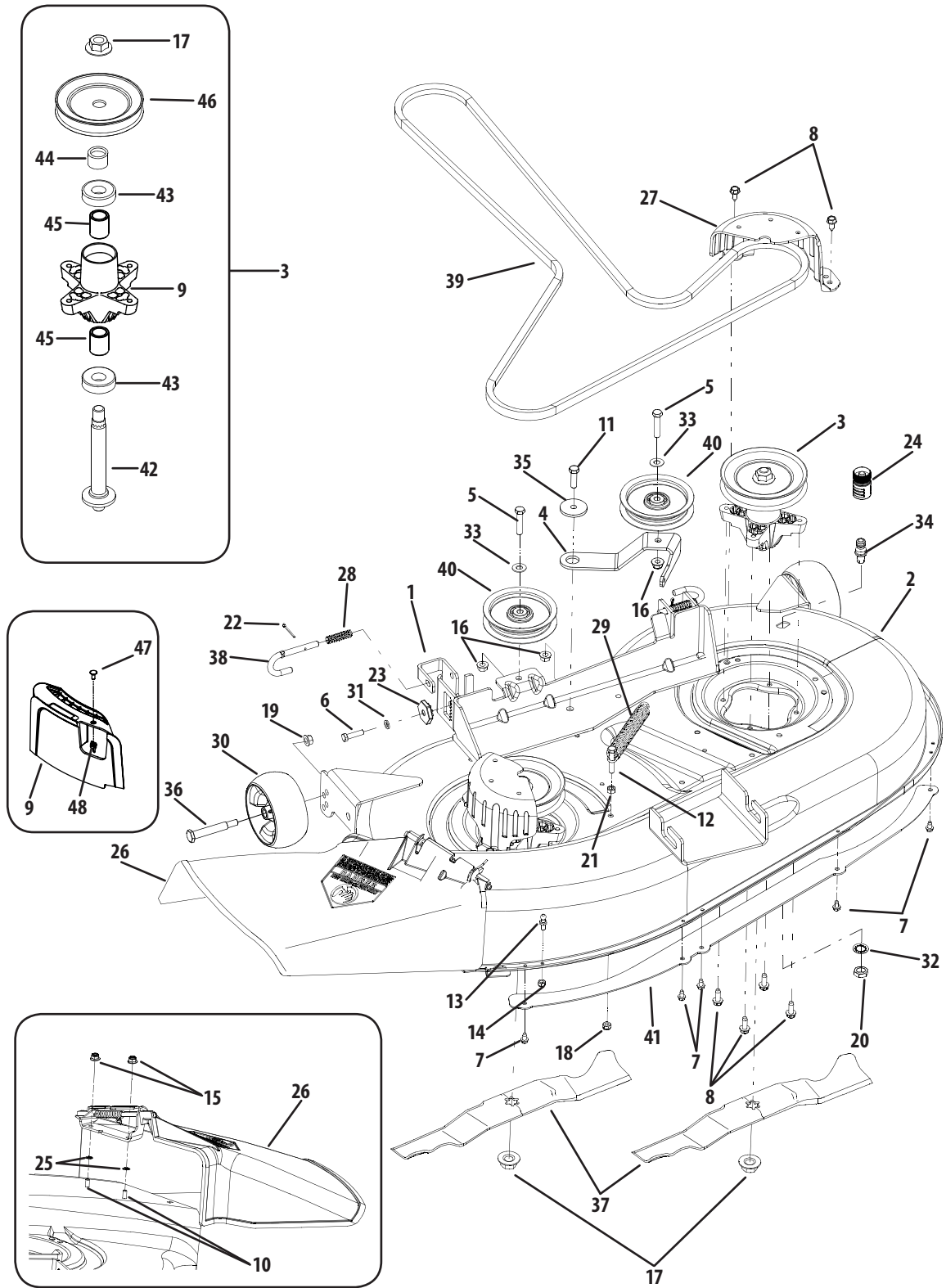
Deck Lift & Controls



Ref.	Part Number	Description
1	603-04160B	Deck Lift Shaft Assembly
2	603-04322	Lapbar Lever RH
3	603-04324	Lapbar Lever LH
4	947-04065	Brake Rod
5	647-04099A	Control Shaft
6	703-05387B	Lapbar Pivot Bracket
7	703-05396A	Brake Handle
8	703-05414A	Front Deck Hanger Bracket
9	703-05793A	Deck Lift Arm
10	703-06096A	Switch Actuator Bracket
11	703-06169	Lift Link Plate
12	710-0347	Hex Screw, 3/8-16 x 1.75
13	710-0433	Hex Lock Screw, 1/4-20 x .62
14	710-3005	Hex Cap Screw, 3/8-16 x 1.25
15	710-3008	Hex Cap Screw, 5/16-18 x .75
16	710-3180	Hex Cap Screw, 5/16-18 x 1.75
17	911-0332	Clevis Pin, .50 x .78
18	712-04243	Hex Nut, 1/2-13
19	712-04063	Hex Flange Insert Lock Nut, 5/16-18
20	712-04064	Hex Flange Insert Lock Nut, 1/4-20
21	712-04065	Hex Flange Insert Lock Nut, 3/8-16
22	912-0431	Hex Flange Lock Nut, 3/8-16
23	912-3001	Jam Nut, 3/8-24
24	714-04040	Bow-Tie Cotter Pin
25	914-04023	Cotter Pin
26	716-0106	E-Ring, .625 Dia.

Ref.	Part Number	Description
27	720-0311	Handle Grip
28	723-04035	Rod End
29	727-04141	Damper Cylinder
30	731-04735	Handle Grip
31	731-05732	Spacer, .62 x 1.0
32	731-05882	Hand Grip
33	932-0334	Compression Spring
34	732-0874	Torsion Spring
35	736-0270	Bell Washer, .265 x .75 x .062
36	936-0272	Flat Washer, .51 x 1.0 x .06
37	936-0275	Flat Washer, .344 x .688 x .065
38	736-3019	Flat Washer, .531 x 1.062 x .134
39	738-0143	Shoulder Screw, .498 x .340 x 3/8-16
40	938-0296	Shoulder Screw, .437 x .268 x 5/16-18
41	938-0507B	Shoulder Screw, .5 x .434 x 3/8-16
42	938-0572	Shoulder Screw, .374 x 1.16 x 1/4-20
43	938-0974	Shoulder Screw, .375 x .38 x 1/4-20
44	941-0225	Hex Flange Bearing
45	741-3074	Flange Bearing, .626 x .938 x .344
46	747-04401A	Deck Front Hanger Rod
47	747-04637	Deck Lift Handle Rod
48	747-05057	Lapbar Control Rod
49	948-0227A	Hex Flange Bearing
50	748-04169A	Control Hub
51	750-04676	Spacer, .385 x .630 x .75
52	750-04776	Spacer, .380 x .625 x .265

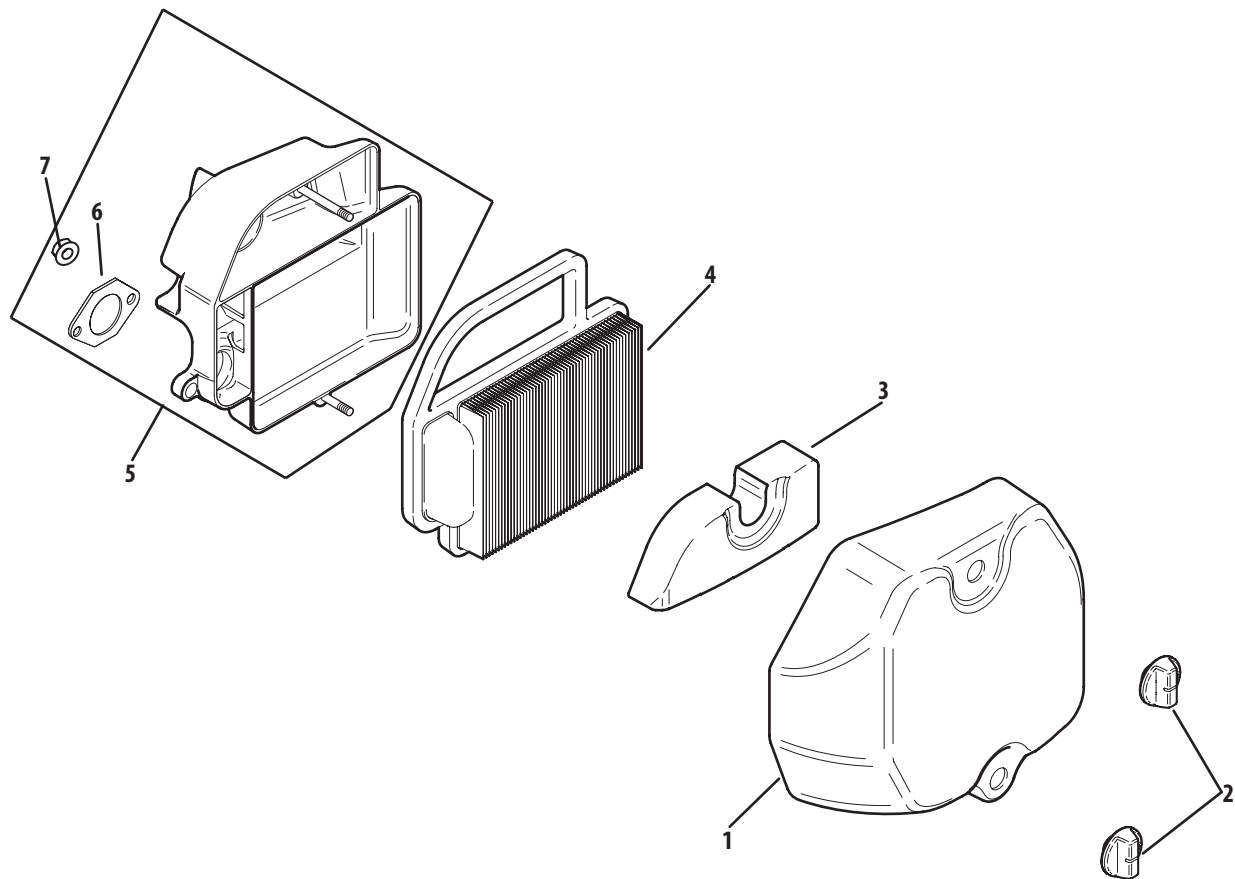
Mower Deck



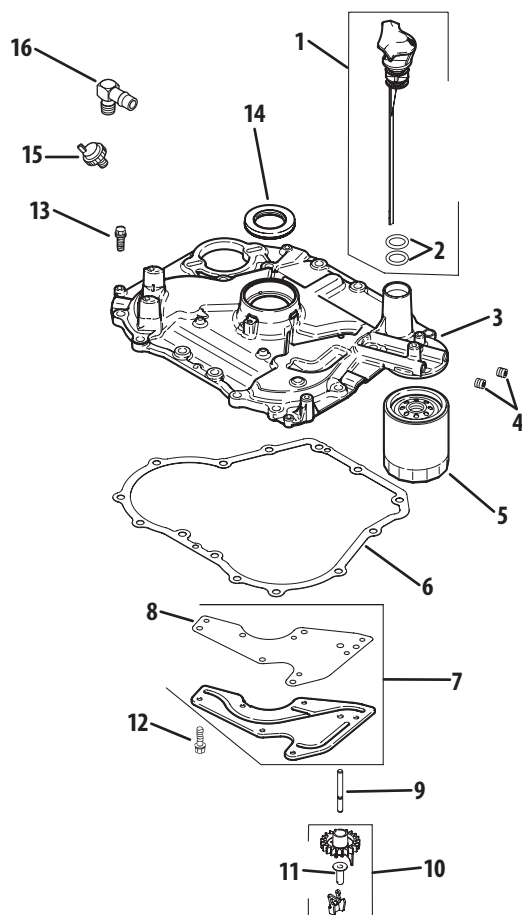
Ref	Part Number	Description
1	603-04156	Deck Lift Bracket
2	903-04335C	Deck Housing
3	918-0624A	Spindle Assembly
4	703-05824C	Idler Arm
5	710-0347	Hex Cap Screw, 3/8-16 x 1.75
6	710-0528	Hex Cap Screw, 5/16-18 x 1.25
7	710-0599	Hex Washer Head Screw, 1/4-20 x .5
8	710-04484	Hex Washer Head Screw, 5/16-18 x .750
9	731-2363	Mulch Plug (Aus.)
10	710-0751	Hex Cap Screw, 1/4-20 x .62
11	710-3005	Hex Cap Screw, 3/8-16 x 1.25
12	710-3180	Hex Cap Screw, 5/16-18 x 1.75
13	911-04069	Grass Catcher Pin, 1/4-20
14	712-0324	Hex Insert Lock Nut, 1/4-20
15	712-04064	Hex Insert Flange Lock Nut, 1/4-20
16	712-04065	Hex Insert Flange Lock Nut, 3/8-16
17	712-0417A	Hex Flange Nut, 5/8-18
18	912-0429	Hex Insert Lock, 5/16-18
19	912-0431	Hex Flange Lock Nut, 3/8-16
20	912-0641	Hex Nut, M16-1.5
21	912-3010	Hex Nut, 5/16-18
22	914-0470	Cotter Pin, 1/8 x 1.25
23	917-04074	Deck Adjustment Gear
24	921-04041	Water Nozzle Adapter
25	726-0233	Push Nut, .25 x .5

Ref	Part Number	Description
26	931-1032B	Discharge Chute Assembly (U.S.)
—	631-0216A	Discharge Chute Assembly (Aus.)
27	731-2231B	Belt Cover
28	732-04652	Compression Spring, .535 x 1.751
29	732-04609	Extension Spring, .94 Dia. x 6.74
30	734-04155	Deck Ball Wheel, 5.0
31	936-0119	Lock Washer, 5/16
32	736-0225	Lock Washer
33	736-3072	Flat Washer, .38 x .93 x .11
34	737-04003D	Deck Water Nozzle
35	738-04162A	Shoulder Spacer, .884 x .19
36	938-3056	Shoulder Screw, 3/8-16 x .5 x 2.5
37	942-0616A	Star 3-in-1 Blade, 21 (U.S.)
—	942-04063	Star Low Blade, 21 (Aus.)
38	747-1116	Deck Hanger Rod
39	954-04137A	V-Belt
40	756-04129B	Idler Pulley, 4.25 Dia
41	753-0884	Deck Skirt
42	738-1010A	Spindle Shaft, 5.75
43	941-0919	Ball Bearing
44	748-0433	Spacer, .820 x 1.15 x .73
45	750-1000	Spacer, .8 x 1.10 x 1.322
46	956-1227	Deck Pulley, 6.3 Dia
47	710-0134	Carriage Screw, 1/4-20 x .62 (Aus.)
48	712-3087	Wing Nut, 1/4-20 (Aus.)

Kohler SV600-0221 Air Filter



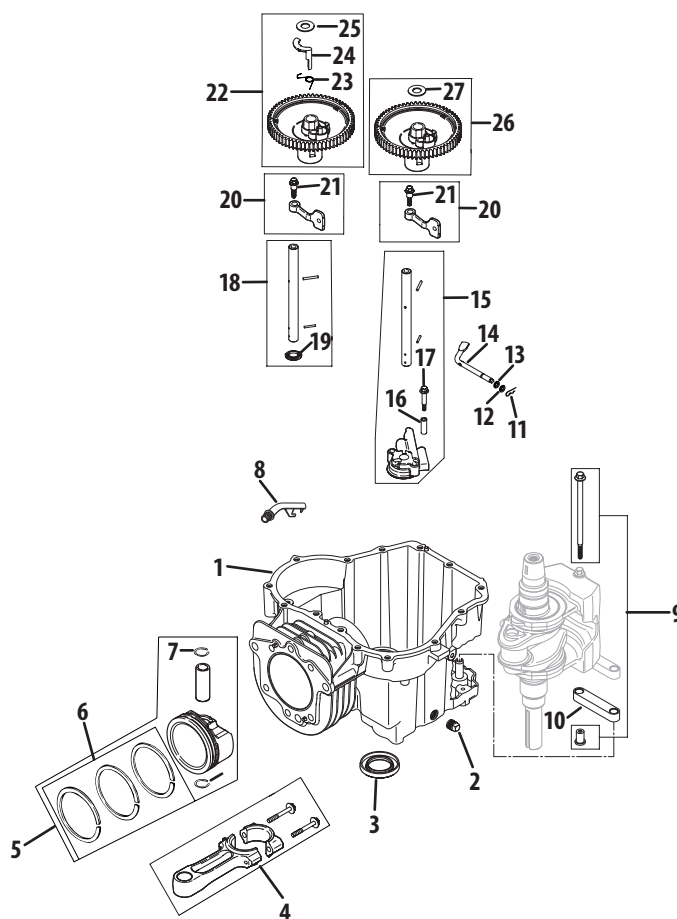
Ref.	Part Number	Description
1	KH-20-096-04-S	Air Cleaner Cover
2	KH-25-341-05-S	Cover Knob
3	KH-20-883-02-S1	Pre-Cleaner Element
4	KH-20-883-02-S1	Air Cleaner Element
5	KH-20-094-04-S	Air Cleaner Base Kit (Inc. #6)
6	KH-12-041-02	Air Cleaner Base Gasket
7	KH-M-641060-S	Hex Flange Nut, M6 x 1.0



Ref.	Part Number	Description
1	KH-20-040-07-S	Dipstick w/ 2 O-Rings (Inc. #2)
2	KH-20-153-01-S	O-Ring
3	KH-20-009-21-S	Closure Plate Assembly Kit
4	KH-25-139-60-S	CTSK Pipe Plug, 1/8"
5	KH-12-050-01-S	Oil Filter
6	KH-20-041-01-S	Closure Plate Gasket
7	KH-20-096-02-S	Oil Passage Cover Kit (Inc. #8)
8	KH-20-041-02-S	Oil Passage Gasket

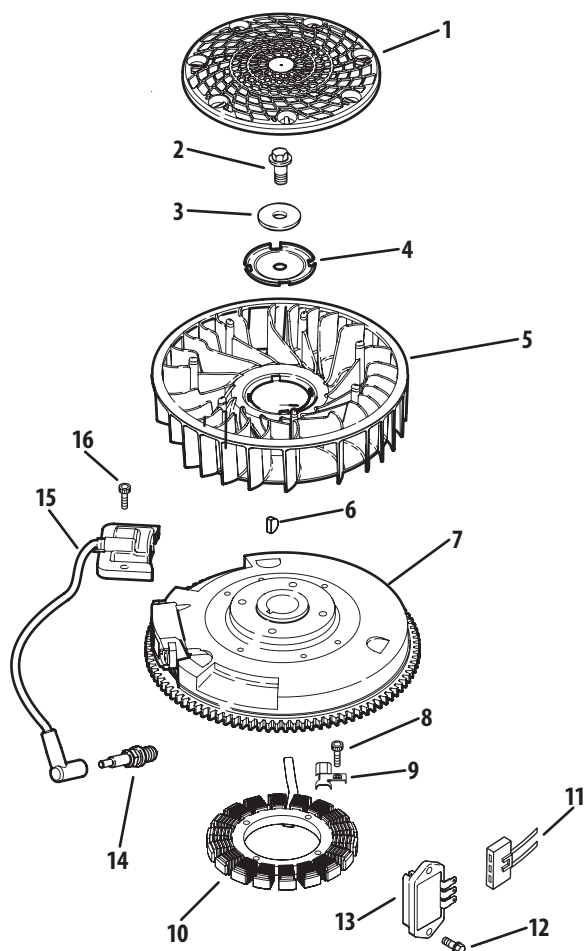
Ref.	Part Number	Description
9	KH-20-144-03-S	Governor Cross Shaft
10	KH-25-310-07-S	Governor Gear Kit (Inc. #11)
11	KH-24-380-16-S	Governor Regulating Pin
12	KH-M-545013-S	Screw, M5 x 0.8 x 13
13	KH-25-086-127-S	Hex Flange Screw, 1/2
14	KH-20-032-01-S	Oil Seal
15	KH-25-099-27-S	Oil Pressure Switch
16	KH-25-155-02	90° Connector Hose

Kohler SV600-0221 Crankcase



Ref.	Part Number	Description
1	—	Crankcase (Use KH-20-522-10)
2	KH-25-139-57-S	Square Head Pipe Plug, 3/8"
3	KH-20-032-01-S	Oil Seal
4	KH-20-067-04-S	Connecting Rod
5	KH-20-874-01-S	Piston w/ Ring Set Kit (Inc. #6 & 7)
6	KH-20-108-04-S	Ring Set (94mm)
7	KH-20-018-04-S	Piston Pin Retainer
8	KH-20-123-02-S	Drainback Tube
9	KH-20-380-16-S	Locating Pin Kit
10	KH-20-186-04-S	Balance Weight Linkage
11	KH-12-154-05	Hitch Pin Clip
12	KH-M-631015	Flat Washer, 6mm
13	KH-X-25-102-S	Flat Washer, 1/4"
14	KH-20-144-02-S	Governor Cross Shaft

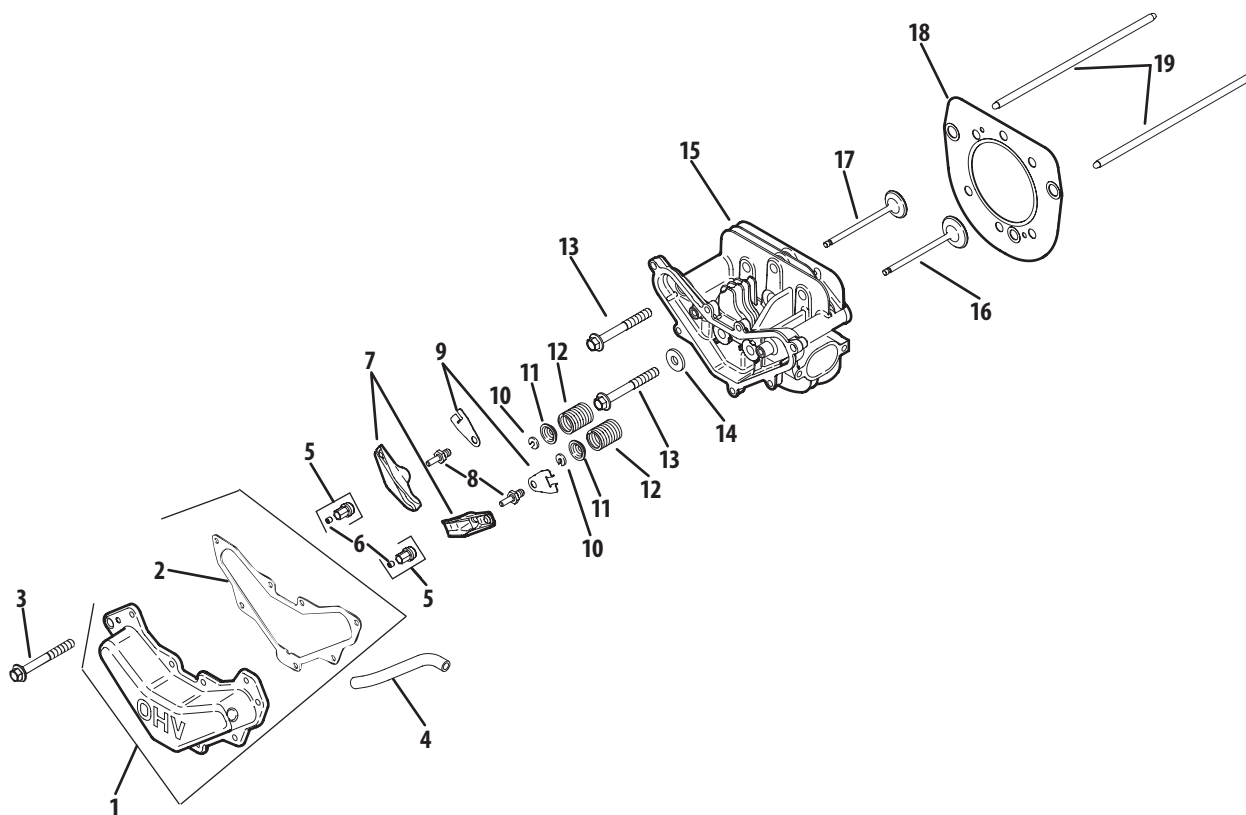
Ref.	Part Number	Description
15	KH-20-393-02-S	Oil Pump Assy. Kit (Inc. #16 & 17)
16	KH-20-112-02-S	Oil Pump Screw Spacer
17	KH-20-086-13-S	Oil Pump Screw
18	KH-20-144-11-S	Cam Center Shaft Kit
19	KH-20-468-08-S	Thrust Washer
20	KH-20-090-01-S	Cam Lever Assembly Kit
21	KH-20-086-06-S	Screw, M6 x 1 x 26
22	KH-20-010-04-S	Camshaft Assembly Kit (Inc. #23-25)
23	KH-20-089-06-S	ACR Spring
24	KH-20-044-16-S	ACR Weight
25	KH-20-468-03-S	ACR Thrust Washer
26	KH-20-010-04-S	Camshaft Assembly Kit (Inc. #27)
27	KH-20-468-03-S	ACR Thrust Washer



Ref.	Part Number	Description
1	KH-20-162-02-S	Grass Screen
2	KH-25-086-125-S	Flange Screw, M10 x 1.5 x 45
3	KH-12-468-05	Flat Washer, $\frac{13}{32}$ "
4	KH-20-146-05-S	Fan Mounting Plate
5	KH-20-157-01-S	Fan
6	KH-X-42-15	Key, $\frac{3}{16}$ " x $\frac{5}{8}$ "
7	KH-20-025-40-S	Flywheel
8	KH-M-548025-S	Screw, M5 x 0.8 x 25
9	KH-20-154-04-S	Sator Wire Clip

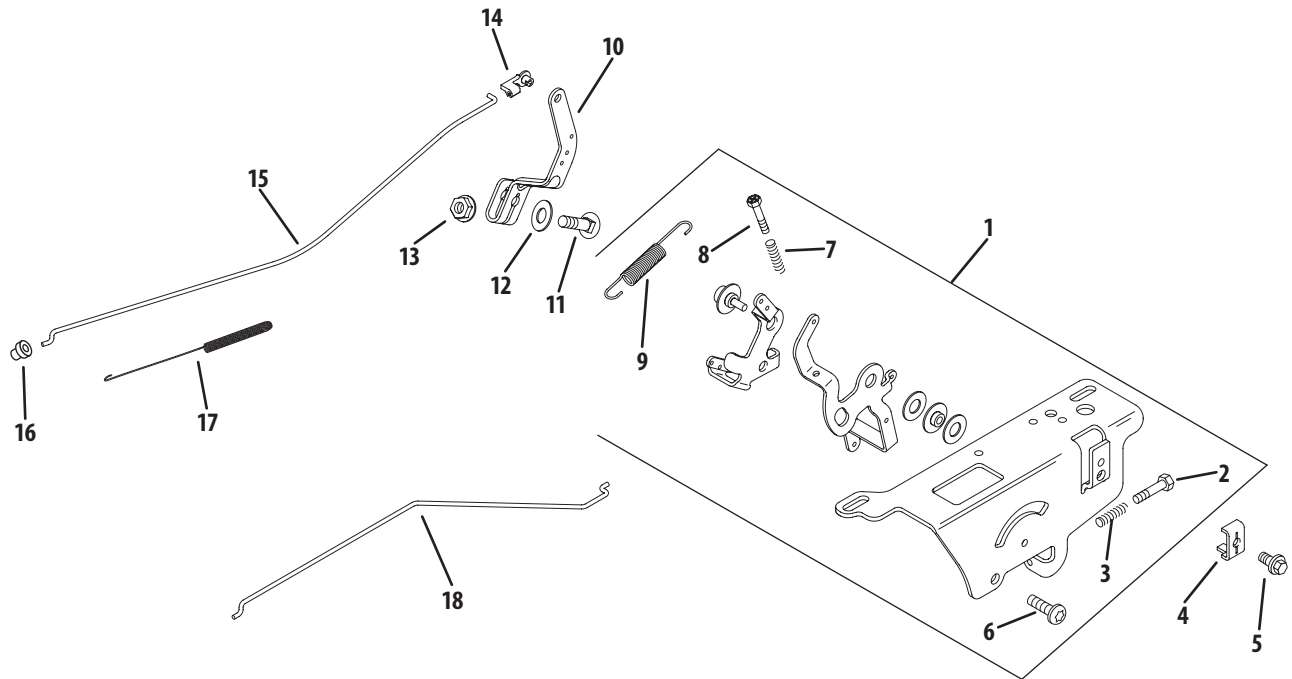
Ref.	Part Number	Description
10	KH-237878	15 Amp Stator Kit
11	KH-25-155-41-S	Connector (3 Contact)
12	KH-M-545020-S	Screw, M5 x 0.8 x 20
13	KH-41-403-10-S	Rectifier-Regulator
14	759-3336	Spark Plug
15	KH-20-584-03-S	Ignition Module
16	KH-M-561025-S	Screw, M5 x 0.8 x 25
—	KH-20-237-01-S	Cable Clamp (Not Shown)
—	KH-20-176-09-S	Wiring Harness (Not Shown)

Kohler SV600-0221 Head/Valve/Breather



Ref.	Part Number	Description
1	KH-20-096-07-S	Valve Cover Kit (Inc. #2)
2	KH-20-041-13-S	Valve Cover Gasket
3	KH-M-645020-S	Screw, M6 x 1.0 x 20
4	KH-20-326-20-S	Breather Hose
5	KH-20-599-04-S	Rocker Arm Pivot (Inc. #6)
6	KH-20-086-04-S	Set Screw
7	KH-20-186-01-S	Rocker Arm
8	KH-20-072-08-S	Rocker Stud
9	KH-20-146-03-S	Push Rod Guide Plate
10	KH-20-062-01-S	Retainer Lock

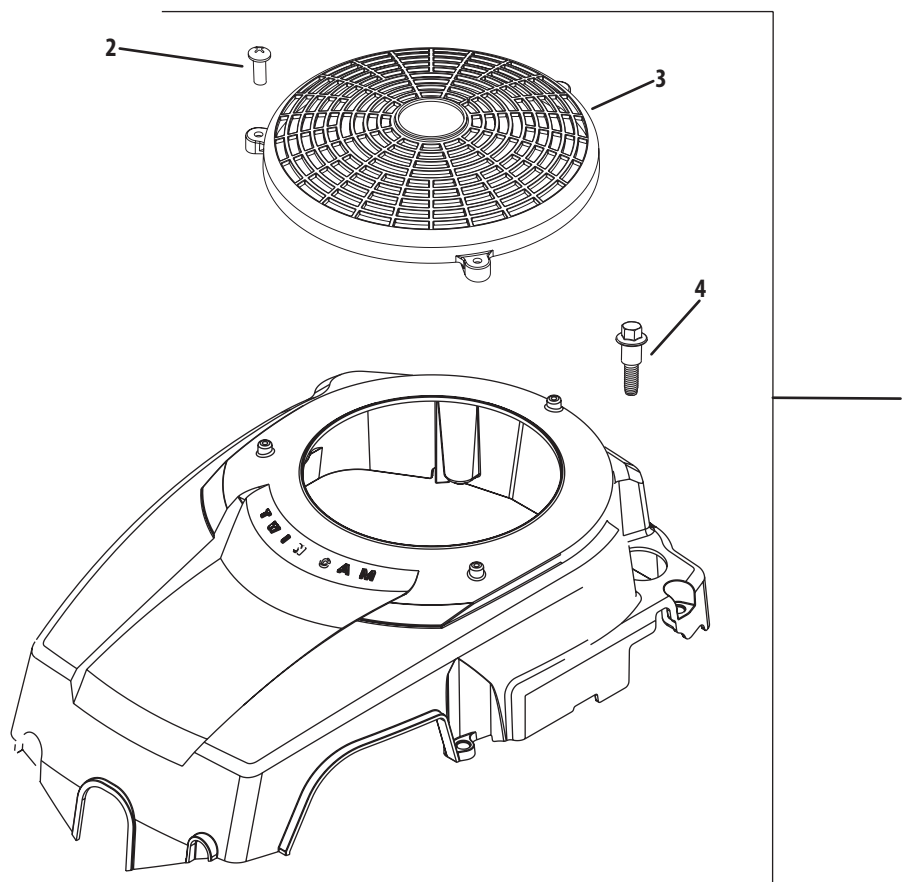
Ref.	Part Number	Description
11	KH-20-173-01-S	Valve Spring Cap
12	KH-20-089-03-S	Valve Spring
13	KH-20-086-02-S	Flange Screw, M10 x 1.5 x 80
14	KH-12-468-05	Flat Washer, 1 ³ / ₃₂ "
15	KH-20-318-11-S	Cylinder Head Assembly
16	KH-20-016-01-S	Exhaust Valve
17	KH-20-017-01-S	Intake Valve
18	KH-20-841-01-S	Cylinder Hd. Gskt. (Inc. #2, 13 & 14)
19	KH-20-411-04-S	Push Rod



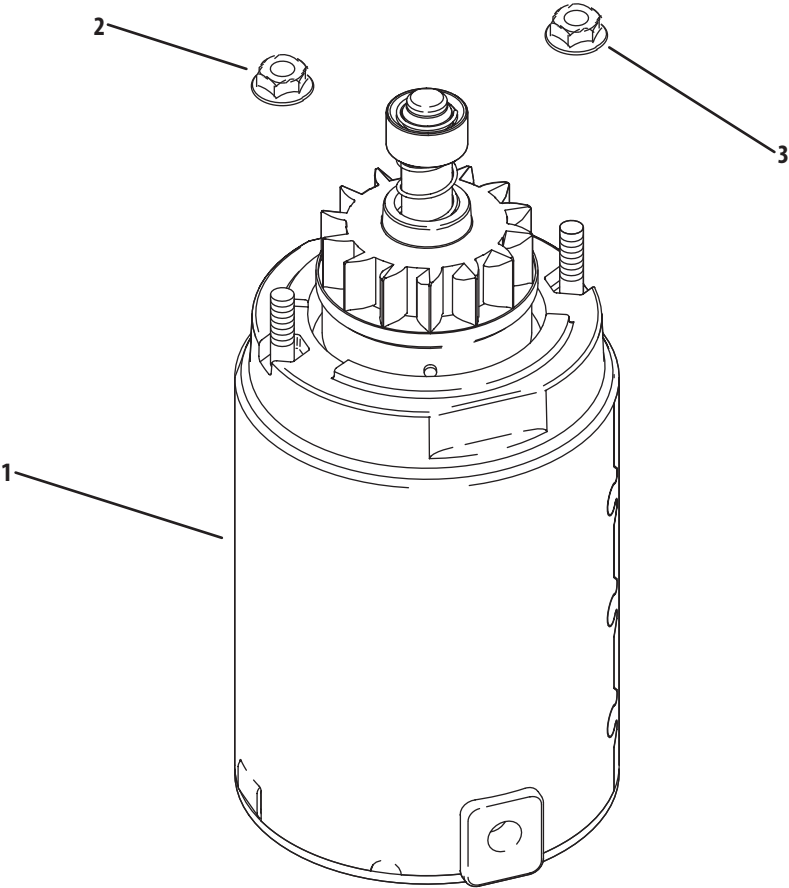
Ref.	Part Number	Description
1	KH-20-536-05-S	Speed Cntrl. Ass. Kit (Inc. #2, 3 & 6-9)
2	KH-20-086-10-S	Screw, M4 X 0.7 X 25
3	KH-12-089-11	Speed Control Spring (Short)
4	KH-12-237-01	Cable Clamp
5	KH-M-545016-S	Screw, M5 X 0.8 X 16
6	KH-M-664020-S	Screw, M6 x 1.0 x 20
7	KH-12-089-11	Speed Control Spring (Short)
8	KH-20-086-10-S	Screw, M4 X 0.7 X 25
9	KH-20-089-11-S	Governor Spring

Ref.	Part Number	Description
10	KH-20-090-11-S	Governor Lever
11	KH-52-211-04	Bolt, 1/4-20 X 1"
12	KH-X-22-11	Internal Tooth Lock Washer, 1/4"
13	KH-12-100-07	Hex Flange Nut, 1/4-20"
14	KH-25-158-11	Throttle Linkage Bushing
15	KH-20-079-07-S	Throttle Linkage
16	KH-25-158-08	Linkage Retaining Bushing
17	KH-20-089-10-S	Linkage Spring
18	KH-20-079-05-S	Choke Linkage

Kohler SV600-0221 Blower Housing & Baffles

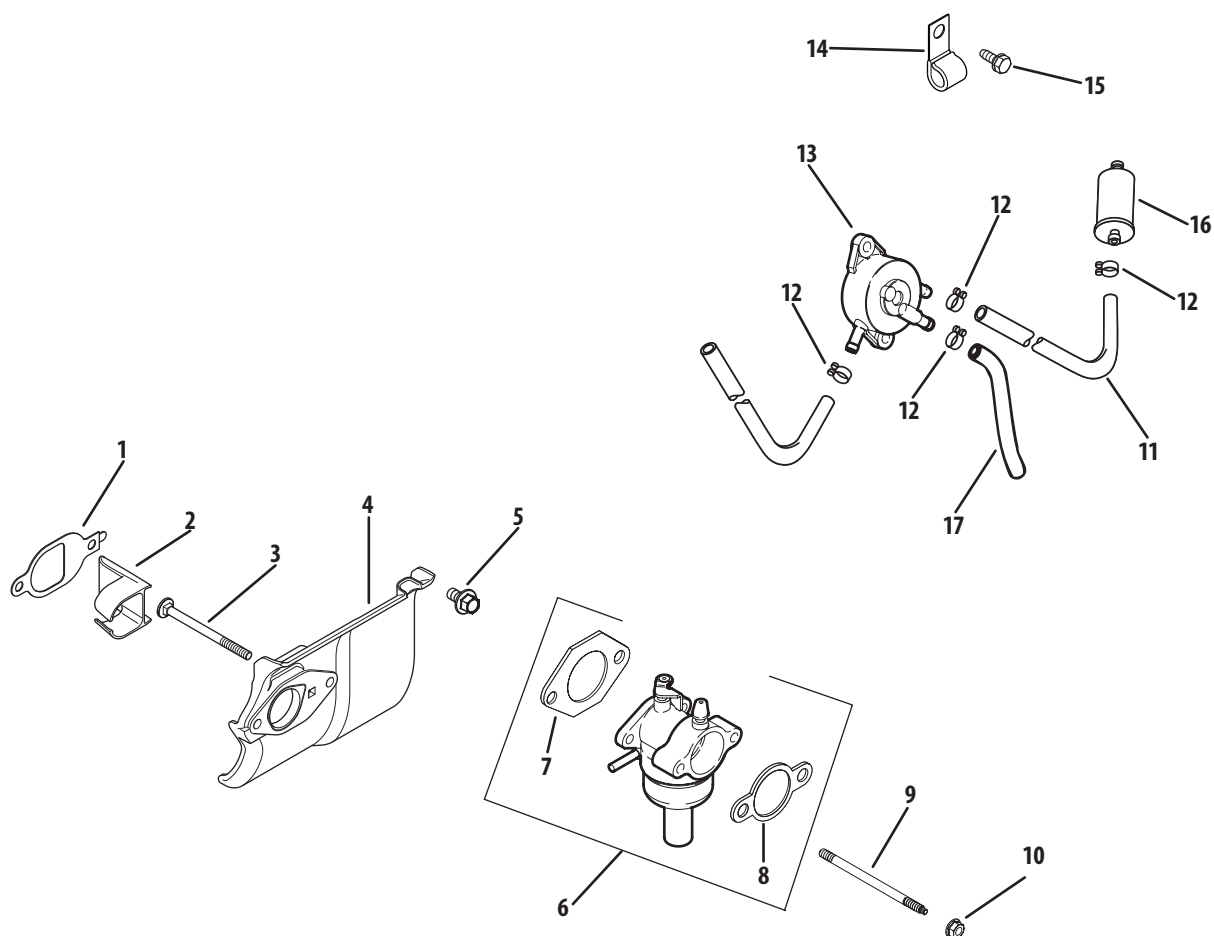


Ref.	Part Number	Description
1	KH-20-755-11-S	Blower Housing & Guard (Inc. #2-4)
2	KH-24-086-41	Screw, #11-16 X 1/2"
3	KH-20-314-06-S	Fixed Guard
4	KH-20-086-06-S	Screw, M6 X 1 X 26



Ref.	Part Number	Description
1	KH-20-098-08-S	Starter Assembly
2	KH-25-100-31-S	Free Spinning Flange Nut, #10-24
3	KH-12-100-07	Hex Flange Nut, ¼-20"
—	KH-12-221-02-S	Brush Kit (Not Shown)
—	KH-20-211-02-S	Thru Bolt (Not Shown)
—	KH-20-227-01-S	Drive End Cap
—	KH-20-755-12-S	Drive Kit

Kohler SV600-0221 Fuel System

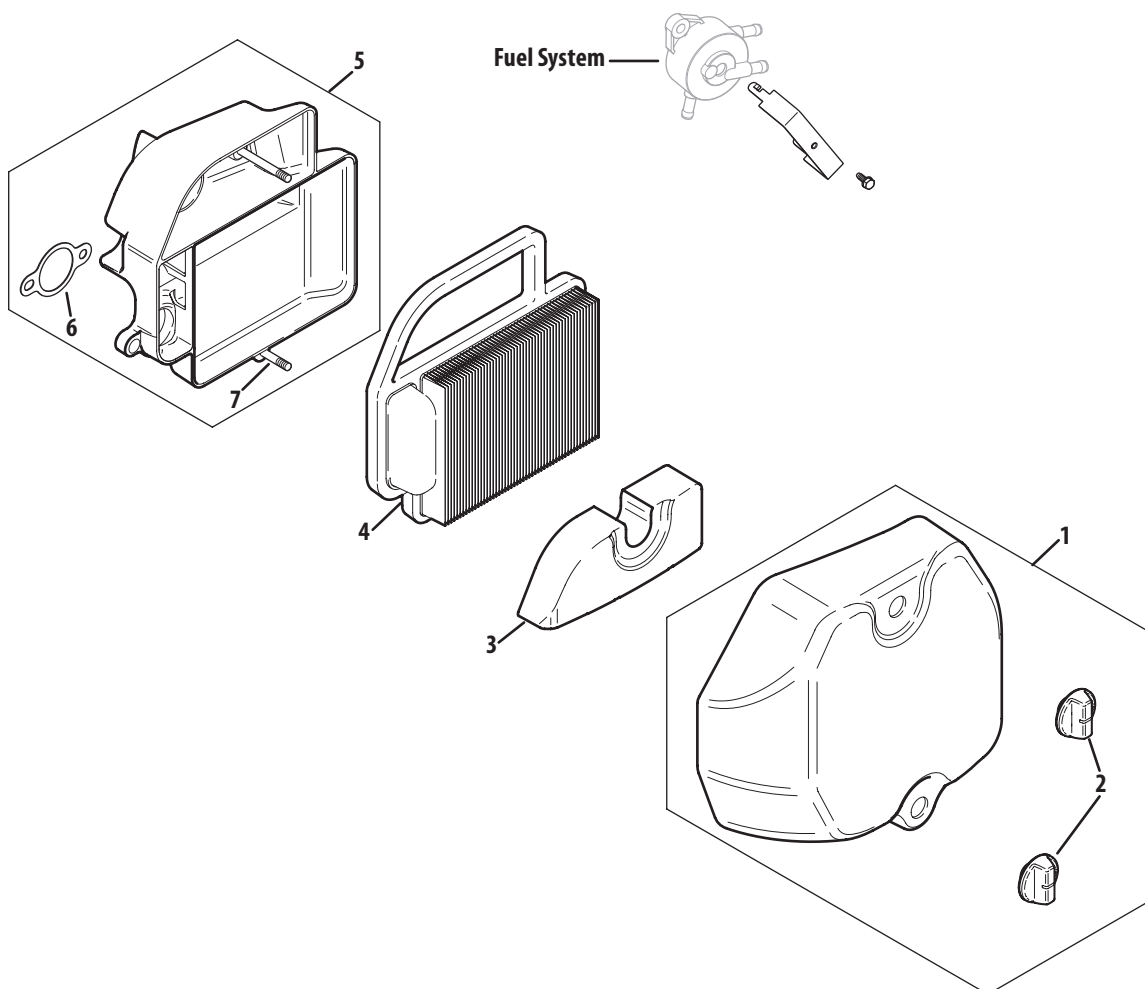


Ref.	Part Number	Description
1	KH-20-041-18-S	Heat Deflector Gasket
2	KH-20-332-01-S	Intake Port Insert
3	KH-20-072-07-S	Carburetor Stud
4	KH-20-265-09-S	Heat Deflector Kit
5	KH-M-651020-S	Flange Screw, M6 x 1.0 x 20
6	KH-20-853-33-S	Carburetor Kit (Inc. #7 & 8)
7	KH-12-041-01	Carburetor Gasket
8	KH-12-041-02	Air Cleaner Base Gasket
9	KH-20-072-05-S	Stud, M6 X 1.0 X 100
10	KH-M-641060-S	Flange Nut, M6 X 1.0

Ref.	Part Number	Description
11	KH-25-111-34-S	Fuel Line, 24"
12	KH-25-237-14-S	Spring Hose Clamp, 1/2"
13	KH-24-393-16	Fuel Pump
14	KH-47-154-01-S	Cable Clip
15	KH-M-445010	Thrd. Frm. Screw, M4 X 0.7 X 10
16	KH-25-050-22-S1	Fuel Filter
17	KH-12-353-10	Fuel Line
—	KH-25-454-05-S	Tie (Not Shown)
—	KH-X-22-11	Internal Tooth Lock Washer, 1/4" (NS)

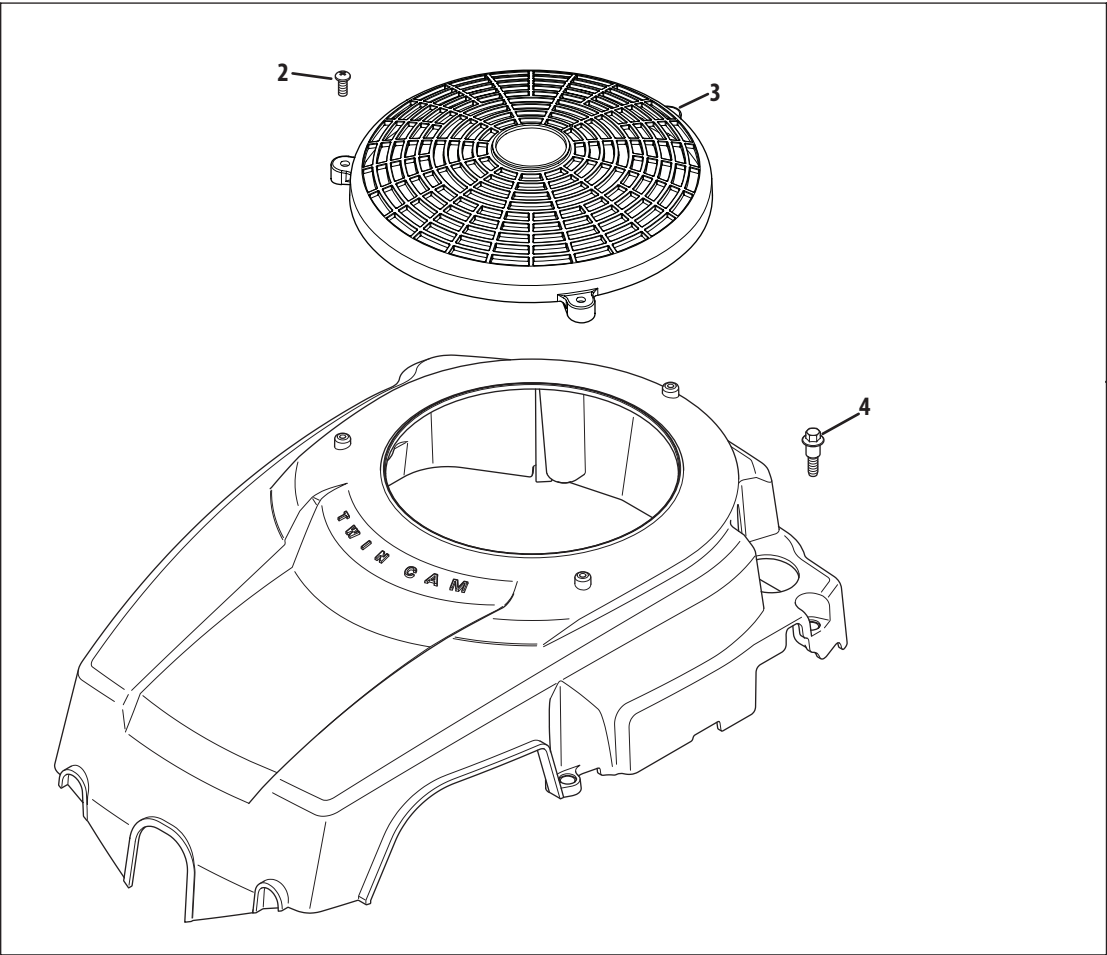
[illegible]

Kohler SV530-0217 Air Filter & Filtration



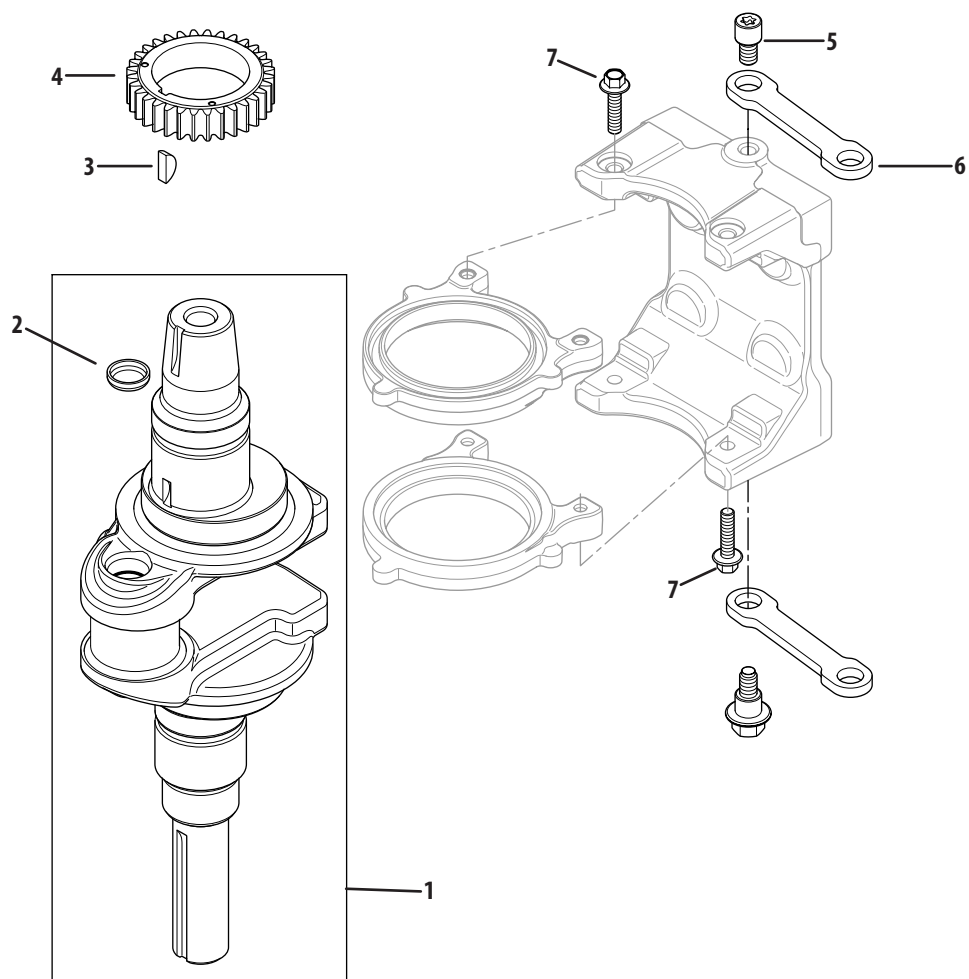
Ref.	Part No.	Description
1	KH-20-096-04-S	Air Cleaner Cover Kit
2	KH-25-341-05-S	Cover Knob
3	KH-20-883-02-S1	Pre-Cleaner Element
4	KH-20-883-02-S1	Air Cleaner Element
5	KH-20-094-04-S	Air Cleaner Base (Inc. #6 & 7)
6	KH-12-041-02	Air Cleaner Base Gasket
7	KH-20-072-04-S	Air Cleaner Base Stud

Kohler SV530-0217 Blower Housing & Baffle

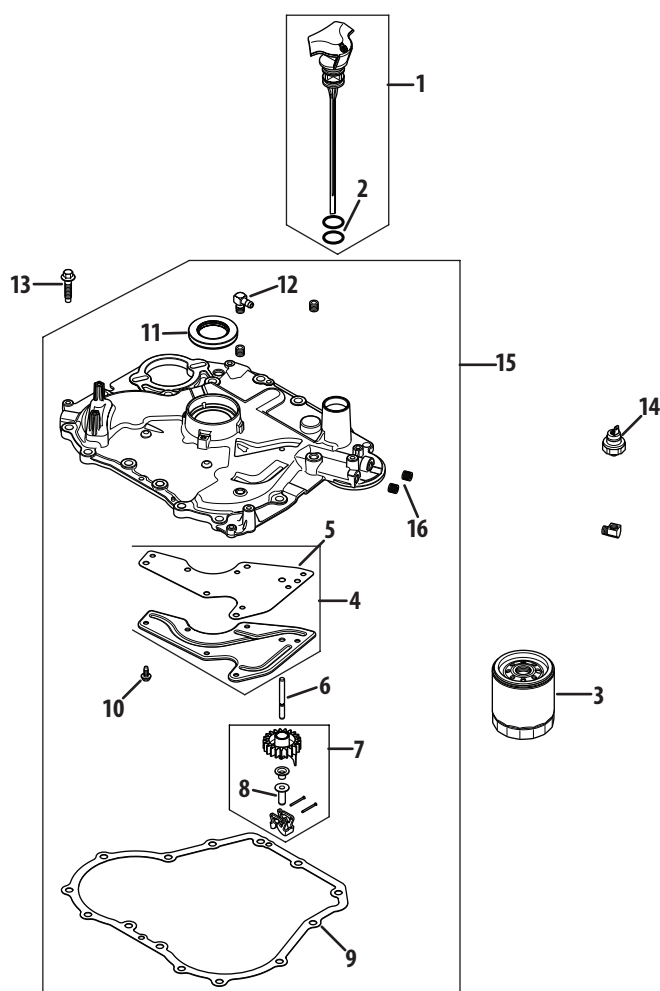


Ref.	Part No.	Description
1	KH-20-755-11-S	Blower Housing & Guard Kit (Inc. #2, 3, 4, 5 & 6)
2	KH-24-086-41	Screw, #11-16 x 1/2"
3	KH-20-314-06-S	Fixed Guard
4	KH-20-086-06-S	Screw, M6 x 1 x 26
5	KH-20-113-29-S	Kohler Round Decal (Not Shown)
6	KH-41-037-10-S	Sevice Nameplate (Not Shown)

Kohler SV530-0217 Crankshaft

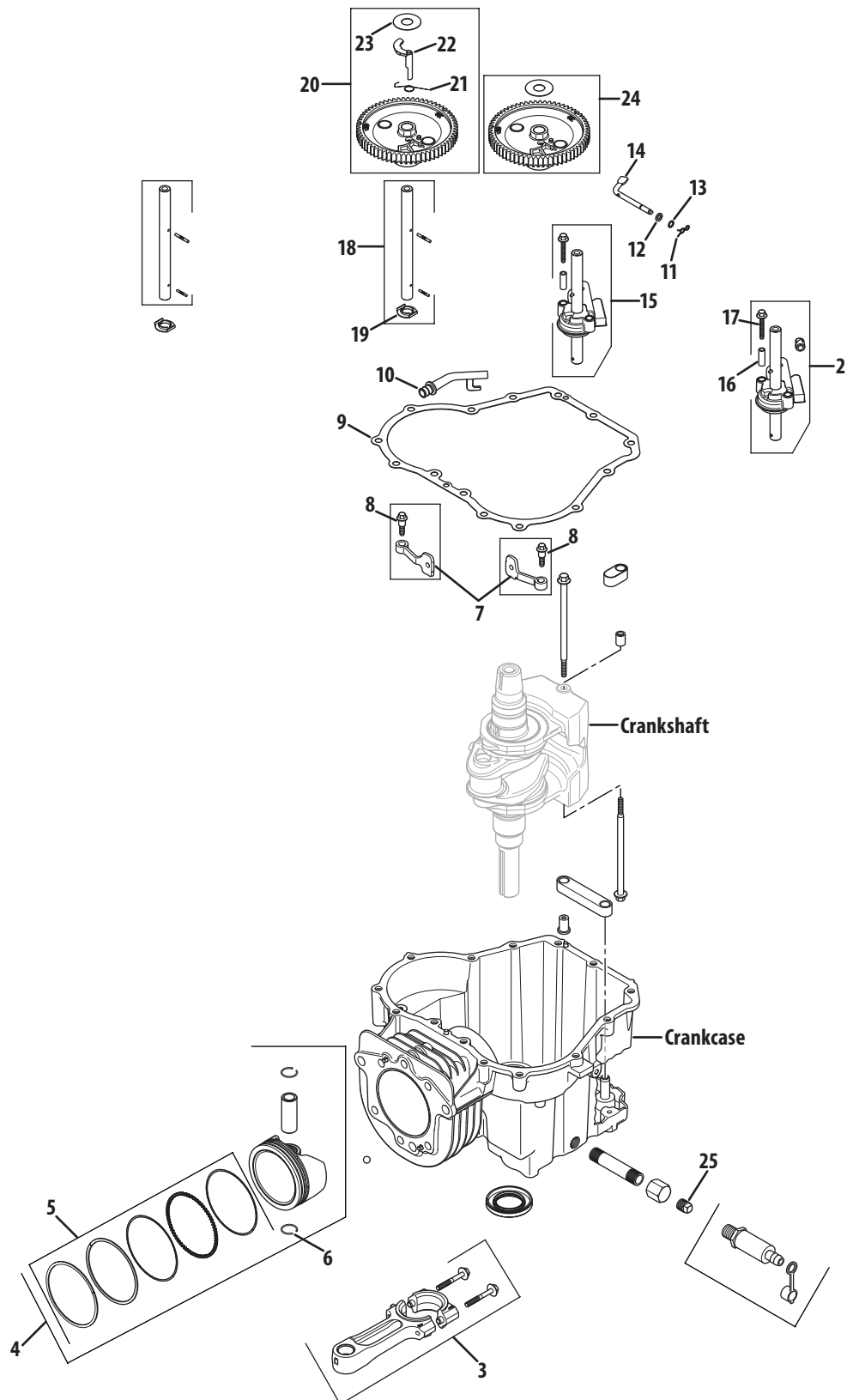


Ref.	Part No.	Description
1	KH-20-014-32-S	Crankshaft Balance Assy. (Inc. #2)
2	KH-25-139-27-S	Cup Plug
3	KH-X-42-15-S	Key, $\frac{3}{16} \times \frac{5}{8}$
4	KH-20-043-15-S	Crankshaft Gear
5	KH-25-086-214-S	Link Pivot Screw
6	KH-20-186-04-S	Balance Weight Linkage
7	KH-25-086-213-S	Shoulder Screw



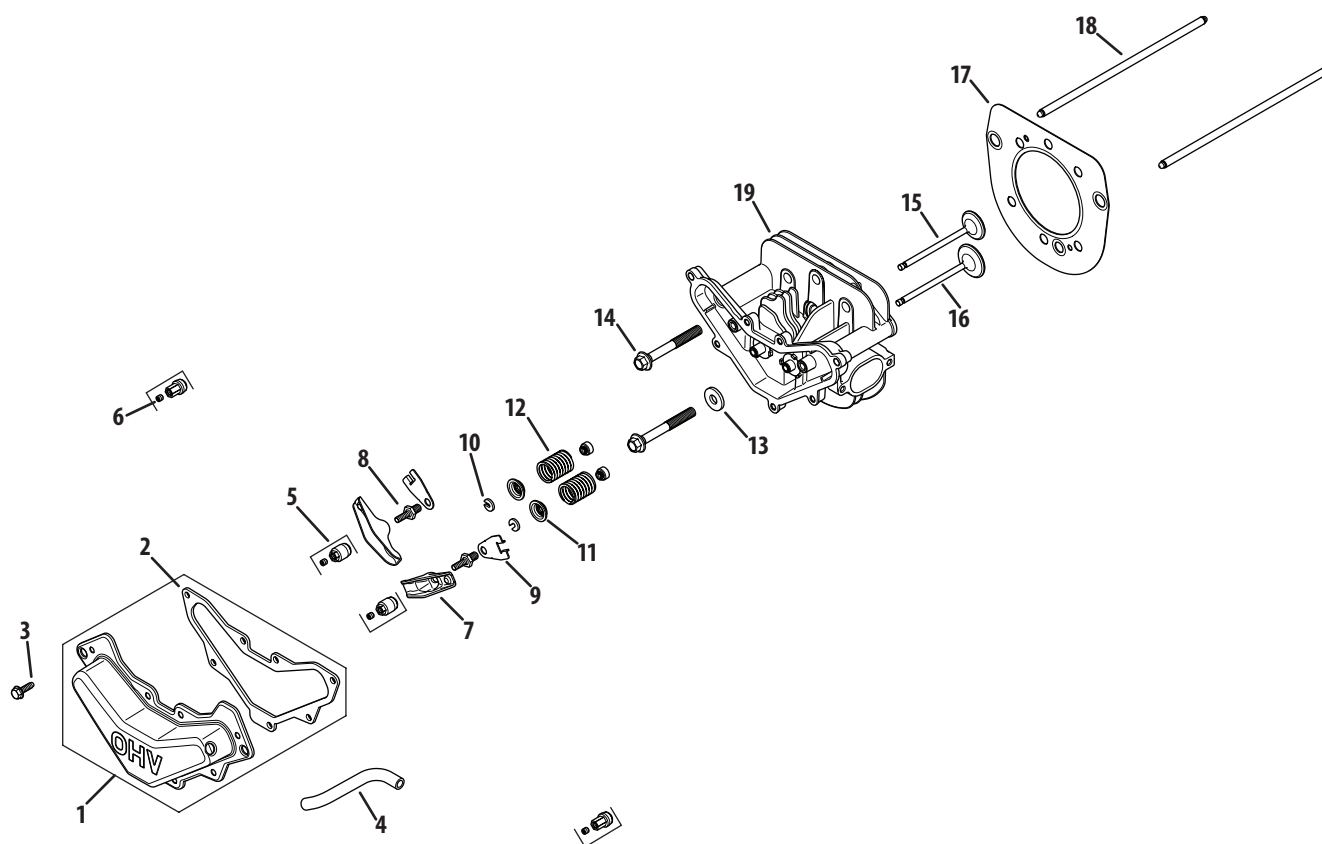
Ref.	Part No.	Description	Ref.	Part No.	Description
1	KH-20-040-07-S	Dipstick Assembly (Inc. #2)	9	KH-20-041-01-S	Closure Plate Gasket
2	KH-20-153-01-S	O-Ring	10	KH-M-545013-S	Screw, M5 x 0.8 x 13
3	KH-25-050-25-S	Oil Filter	11	KH-20-032-01-S	Oil Seal
4	KH-20-096-02-S	Oil Passage Cover Kit (Inc. #5)	12	KH-25-155-02	90° Hose Connector
5	KH-20-041-02-S	Oil Passage Gasket	13	KH-25-086-127-S	Hex Screw, 1/2
6	KH-20-144-03-S	Governor Cross Shaft	14	KH-25-099-27-S	Oil Pressure Switch
7	KH-25-310-07-S	Governor Gear Assy. Kit (Inc. #8)	15	KH-20-009-30-S	Closure Plate Assy. Kit (Inc. #4-12 & 16)
8	KH-12-380-01	Governor Regulating Pin	16	KH-25-139-60-S	Pipe Plug, 1/8

Kohler SV530-0217 Crankcase



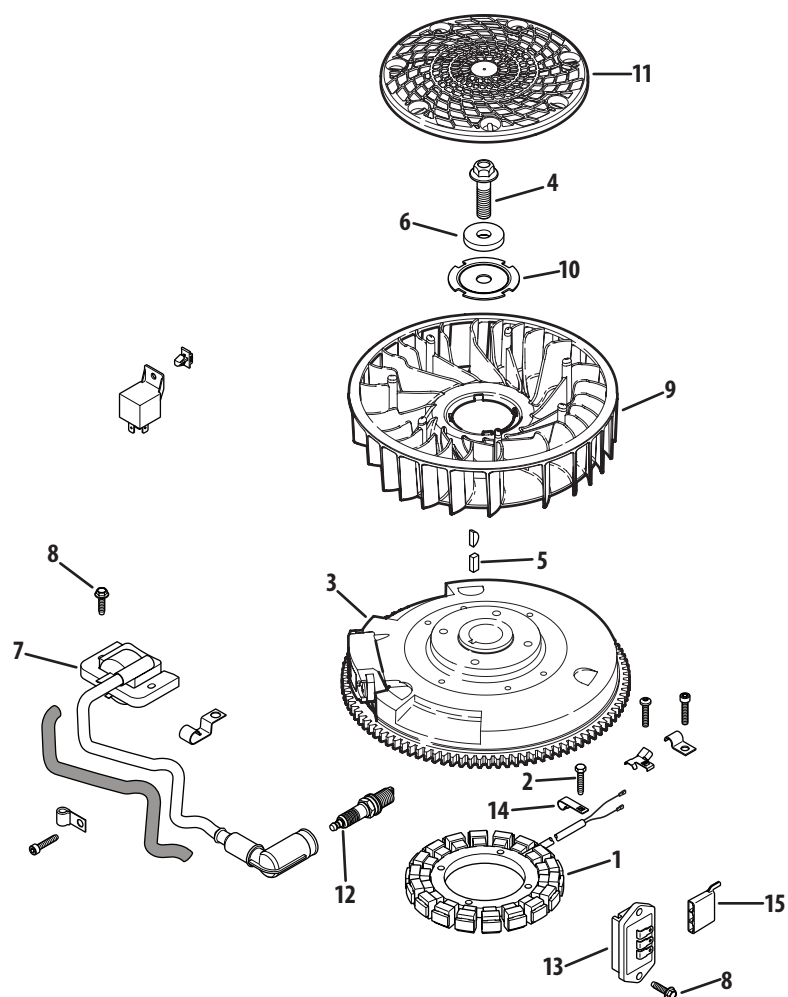
Ref.	Part Number	Description
1	N/A	Crankcase (Use short block)
2	KH-20-032-01-S	Oil Seal
3	KH-20-067-05-S	Connection Assembly Rod
4	KH-20-874-09-S	Piston w/ Ring Set Kit (Inc. #5 & 6)
5	KH-20-108-04-S	Ring Set
6	KH-62-018-04-S	Piston Pin Retainer
7	KH-20-090-01-S	Cam Lever Assembly Kit (Inc. #8)
8	KH-20-086-06-S	Screw, M6 x 1 x 26
9	KH-20-041-01-S	Closure Plate Gasket
10	KH-20-123-02-S	Drainback Tube
11	KH-12-154-05	Hitch Pin Clip
12	KH-M631015	Flat Washer, 6 mm
13	KH-X-25-102-S	Flat Washer, ¼
14	KH-20-144-02-S	Governor Cross Shaft
15	KH-20-393-02-S	Oil Pump Assy. Kit (Inc. #9, 16 & 17)
16	KH-20-112-02-S	Oil Pump Screw Spacer
17	KH-20-086-13-S	Oil Pump Screw
18	KH-20-144-11-S	Cam Center Shaft Kit (Inc. #19)
19	KH-20-468-08-S	Thrust Washer
20	KH-20-010-04-S	Camshaft Assy. Kit (Inc. #21, 22 & 23)
21	KH-20-089-06-S	ACR Spring
22	KH-20-044-16-S	ACR Weight
23	KH-20-468-03-S	ACR Thrust Washer
24	KH-20-010-04-S	Camshaft Assembly Kit (Inc. #23)
25	KH-25-139-57-S	Square Head Pipe Plug

Kohler SV530-0217 Head, Valve & Breather



Ref.	Part Number	Description
1	KH-20-096-07-S	Valve Cover Kit (Inc. #2)
2	KH-20-041-13-S	Valve Cover Gasket
3	KH-M664020-S	Screw, M6 x 1.0 x 20
4	KH-20-326-20-S	Breather Hose
5	KH-20-599-04-S	Pivot Assembly Rocker (Inc. #6)
6	KH-20-086-04-S	Screw Set
7	KH-20-186-01-S	Rocker Arm
8	KH-20-072-08-S	Rocker Stud
9	KH-20-146-03-S	Push Rod Guide Plate
10	KH-20-062-01-S	Retainer Lock
11	KH-20-173-01-S	Valve Spring Cap
12	KH-20-089-03-S	Valve Spring
13	KH-12-468-05	Flat Washer, 3/32
14	KH-20-086-02-S	Flange Screw, M10 x 1.5 x 80

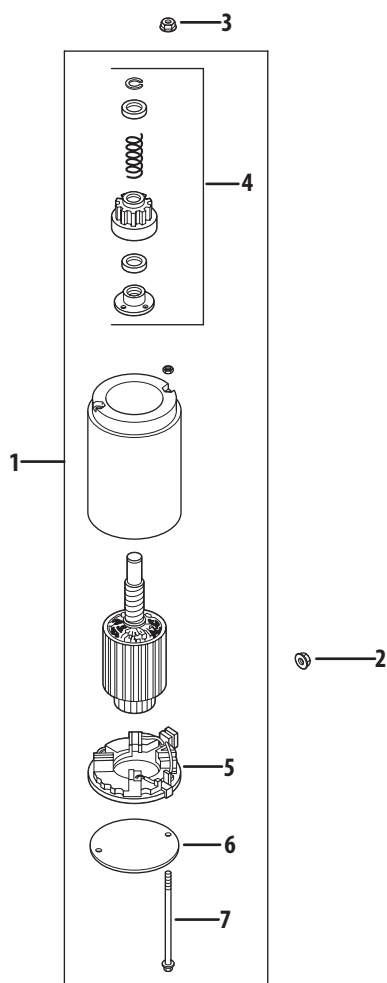
Ref.	Part Number	Description
15	KH-20-016-01-S	Exhaust Valve
16	KH-20-017-01-S	Intake Valve
17	KH-20-841-01-S	Cylinder Hd. Gasket Kit (Inc. #2 & 13)
—	KH-12-041-01-S	Carburetor Gasket (Not Shown)
—	KH-12-041-02	Air Cleaner Base Gasket (Not Shown)
—	KH-25-086-87-S	Hex Screw (Not Shown)
—	KH-X-21-1	Spring Lock Washer, 5/16 (Not Shown)
—	KH-20-041-12-S	Exhaust Gasket (Not Shown)
—	KH-20-041-18-S	Heat Deflector Gasket (Not Shown)
—	KH-20-041-17-S	Heat Deflector Gasket (Not Shown)
18	KH-24-755-66	Push Rod
19	KH-20-318-11-S	Cylinder Head Kit (Inc. KH-25-086-87-S and KH-X-21-1-S)



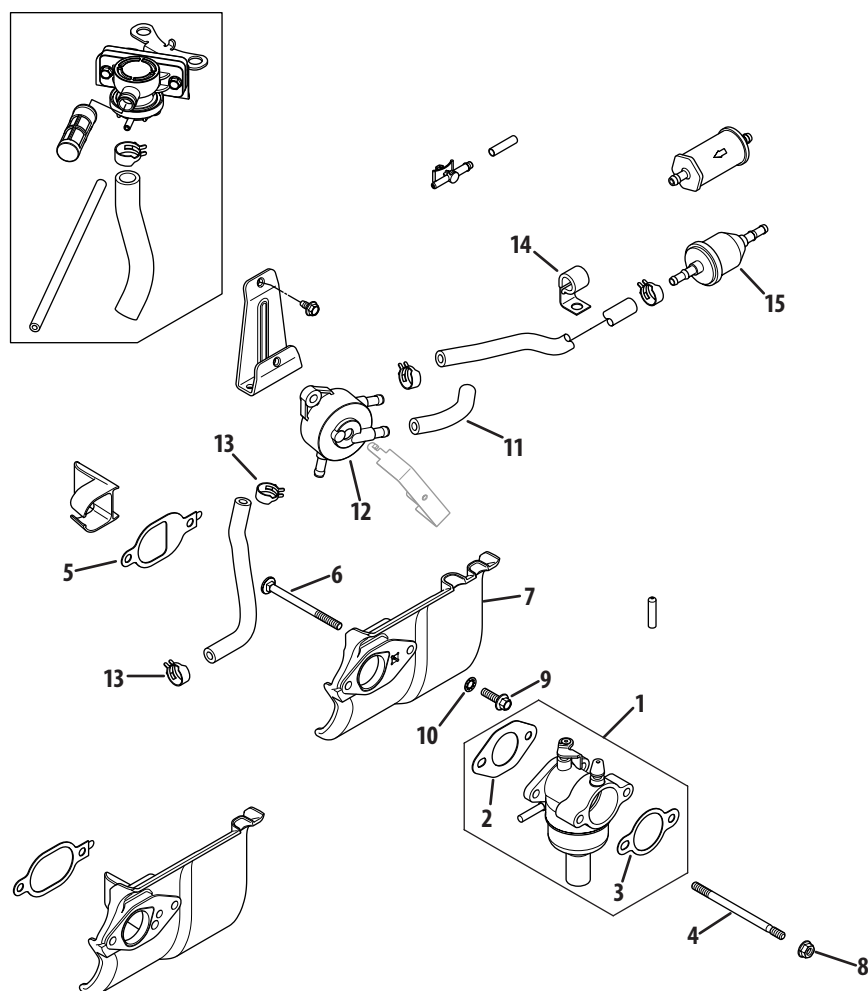
Ref.	Part Number	Description
1	KH-237878	15-Amp Kit (Inc. KH-25-452-01-S)
2	KH-M-548025-S	Screw, M5 x 0.8 x 25
3	KH-20-025-40-S	Flywheel
4	KH-25-086-125-S	Hex Flange Screw
5	KH-25-340-02-S	Straight Flywheel Key
6	KH-25-468-09-S	Flat Washer
7	KH-20-584-03-S	Ignition Module
8	KH-M-545020-S	Screw, M5 x .8 x 20
9	KH-20-157-01-S	Fan

Ref.	Part Number	Description
10	KH-20-146-05-S	Fan Mounting Plate
11	KH-20-162-02-S	Grass Screen
12	KH-25-132-14-S	Spark Plug
13	KH-41-403-10-S	Regulator/Rectifier
14	KH-20-154-04-S	Wire Clip
15	KH-25-155-41-S	Connector
NS	KH-20-176-16-S	Wiring Harness
NS	KH-25-454-05-S	Tie
NS	KH-20-237-01-S	Cable Clamp

Kohler SV530-0217 Starting System



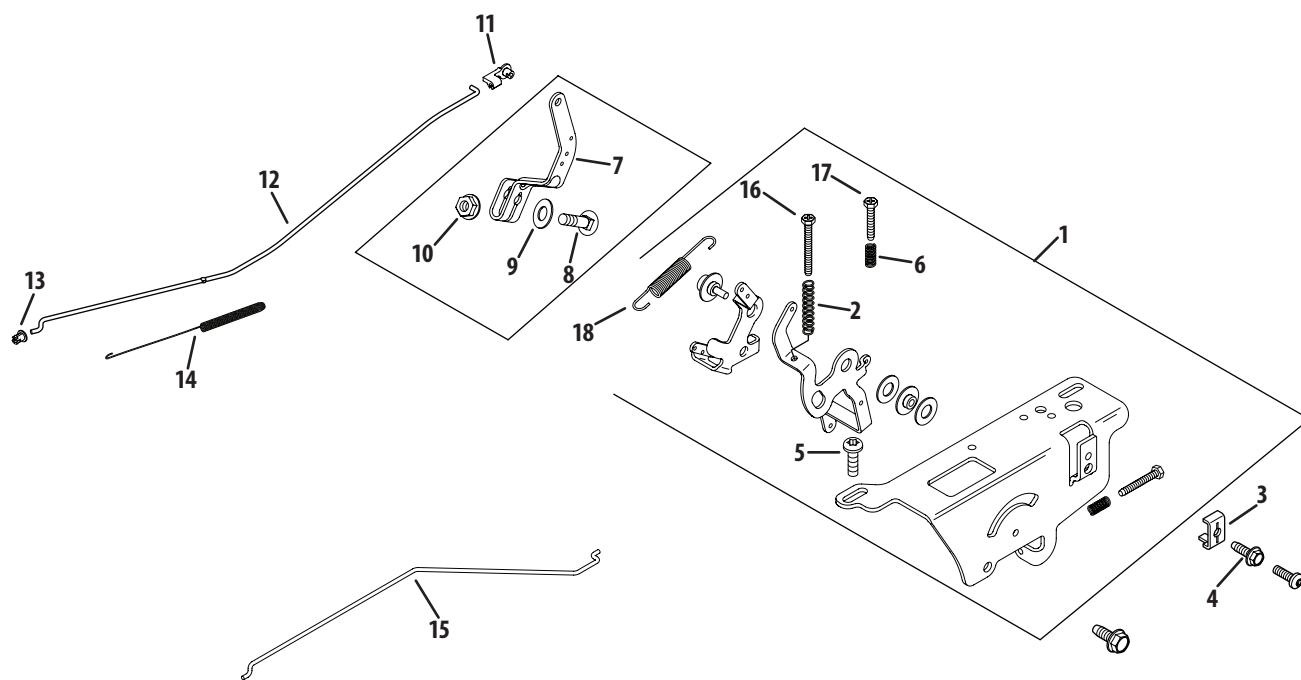
Ref.	Part Number	Description
1	KH-20-098-08-S	Starter Assembly (Inc. #4-7)
2	KH-12-100-07	Flange Nut, 1/4-20
3	KH-25-100-31-S	Free-Spinning Flange Nut, #10-24
4	KH-20-755-12-S	Drive Kit
5	KH-12-221-02-S	Brush Kit
6	KH-20-227-01-S	Drive End Cap
7	KH-20-211-02-S	Thru Bolt



Ref.	Part Number	Description
1	KH-20-853-51-S	Carburetor Kit (Inc. #2 &3)
2	KH-12-041-01	Carburetor Gasket
3	KH-12-041-02	Air Cleaner Base Gasket
4	KH-20-072-05-S	Stud, M6 x 1.0 x 100
5	KH-20-041-18-S	Heat Deflector Gasket
6	KH-20-072-07-S	Carburetor Stud
7	KH-20-265-09-S	Hit Deflector Kit (Inc. #3, 5, 6 & KH-20-332-01-S)
8	KH-M-641060-S	Flange Nut, M6 x 1.0

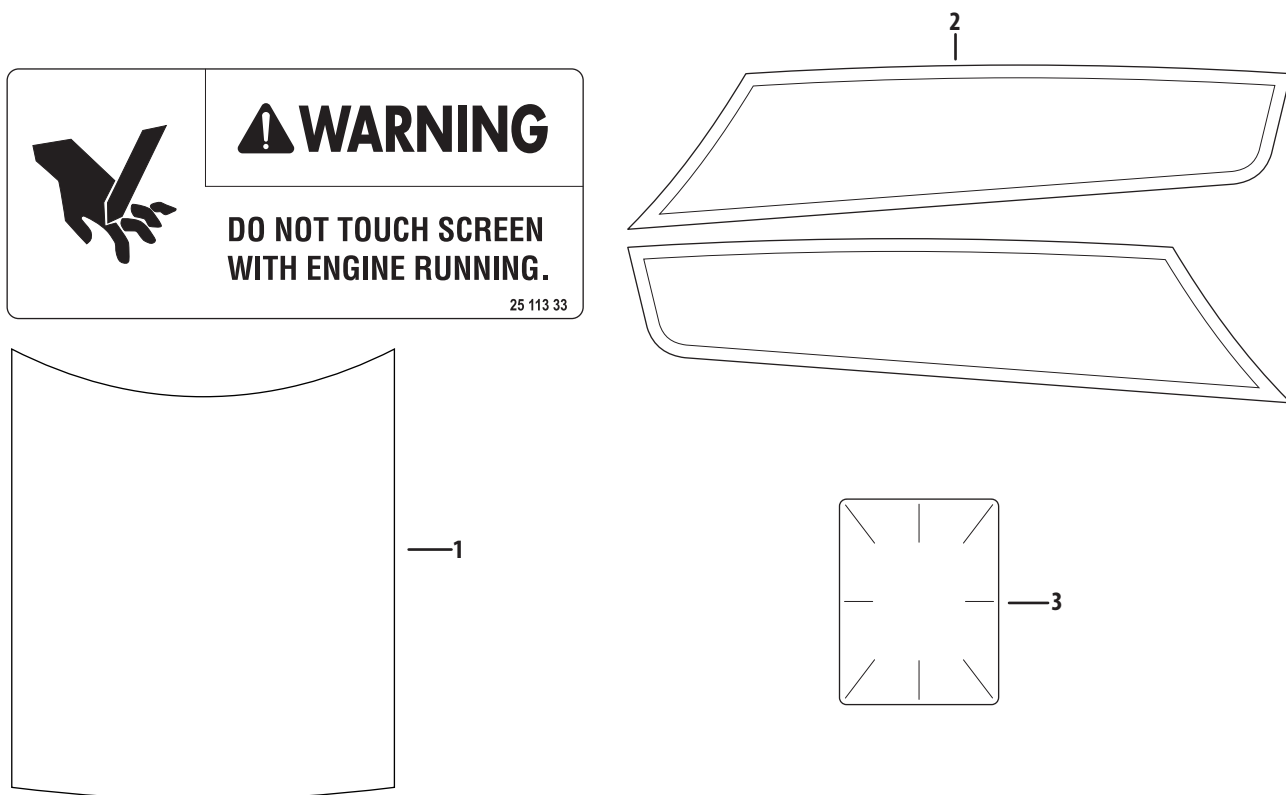
Ref.	Part Number	Description
9	KH-M-651020-S	Flange Screw, M6 x 1.0 x 20
10	KH-X-22-11	Internal Tooth Lock Washer, ¼
11	KH-25-111-34-S	Fuel Line
12	KH-24-393-16	Fuel Pump
13	KH-25-237-14-S	Hose Clamp, ½
14	KH-47-154-01-S	Cable Clip
15	KH-25-050-22-S1	Fuel Filter
NS	KH-25-454-05-S	Tie

Kohler SV530-0217 Engine Controls



Ref.	Part Number	Description
1	KH-20-536-06-S	Speed Control Assy. Kit (Inc. #2, 5, 6, 16, 17, 18 & KH-25-086-297-S)
2	KH-20-089-12-S	Speed Control Spring
3	KH-12-237-01	Cable Clamp
4	KH-M-545016-S	Screw, M5 x 0.8 x 16
5	KH-M-664020-S	Screw, M6 x 1.0 x 20
6	KH-12-089-11	Speed Control Spring
7	KH-20-090-11-S	Governor Assembly Lever
8	KH-52-211-04	Bolt, ¼-20 x 1
9	KH-X-22-11	Internal Tooth Lock Washer. ¼

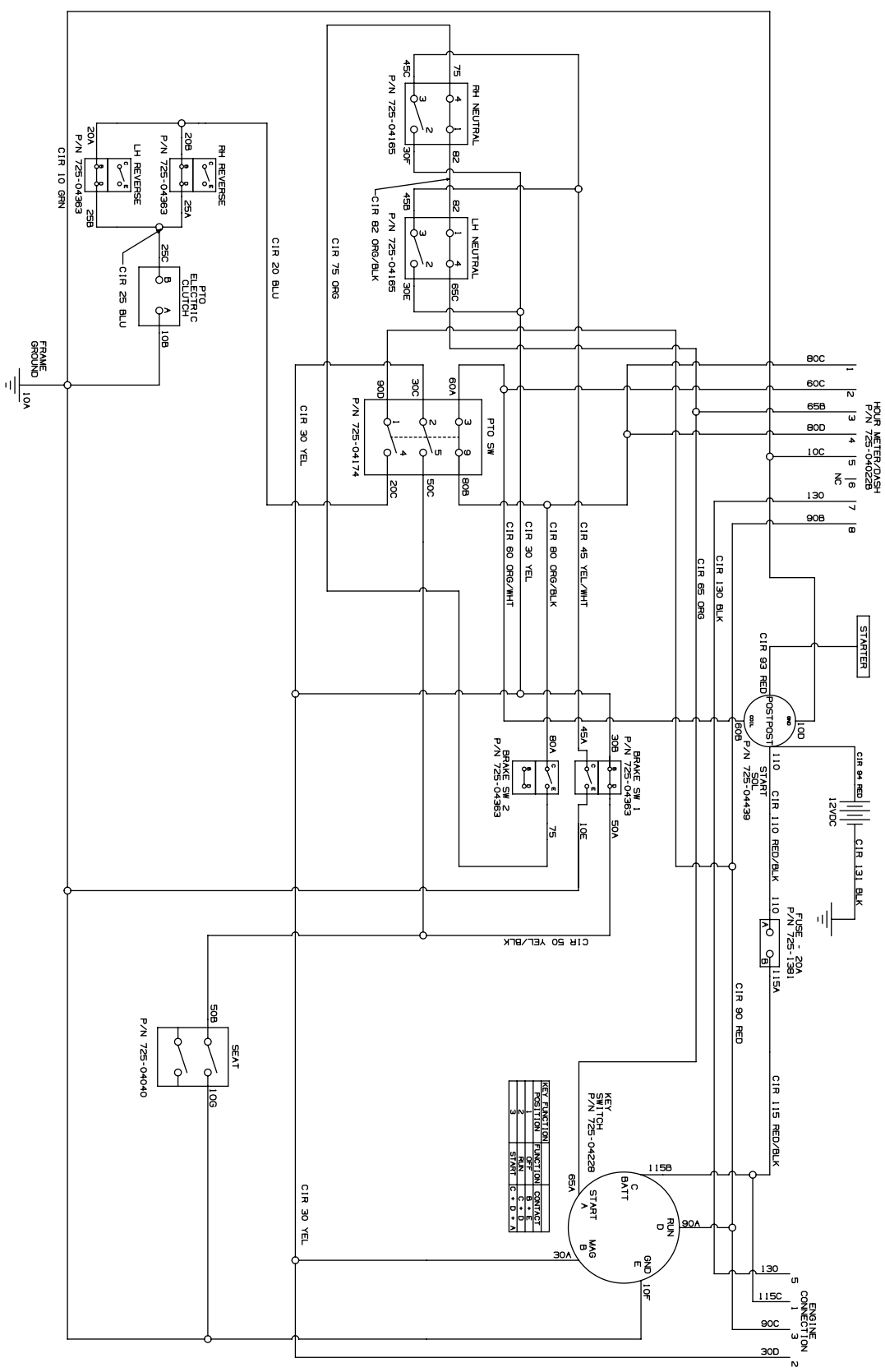
Ref.	Part Number	Description
10	KH-12-100-07	Flange Nut, ¼-20
11	KH-25-158-11	Throttle Linkage Bushing
12	KH-20-079-07-S	Throttle Linkage
13	KH-25-158-08	Linkage Retaining Bushing
14	KH-20-089-10-S	Linkage Spring
15	KH-20-079-05-S	Choke Linkage
16	KH-20-086-18-S	Screw, M4 x 0.7 x 38
17	KH-20-086-10-S	Screw, M4 x 0.7 x 25
18	KH-20-089-11-S	Governor Spring

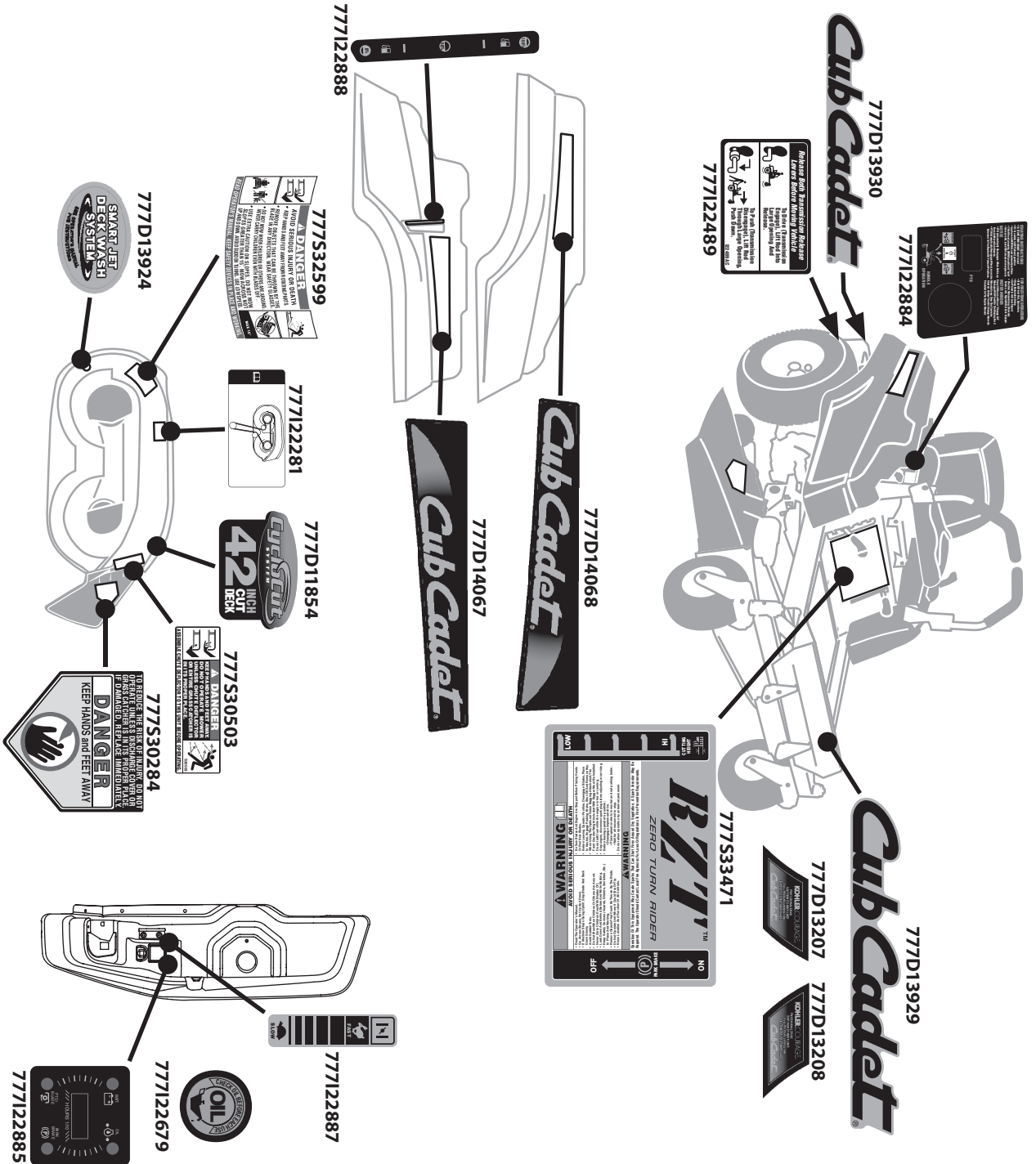


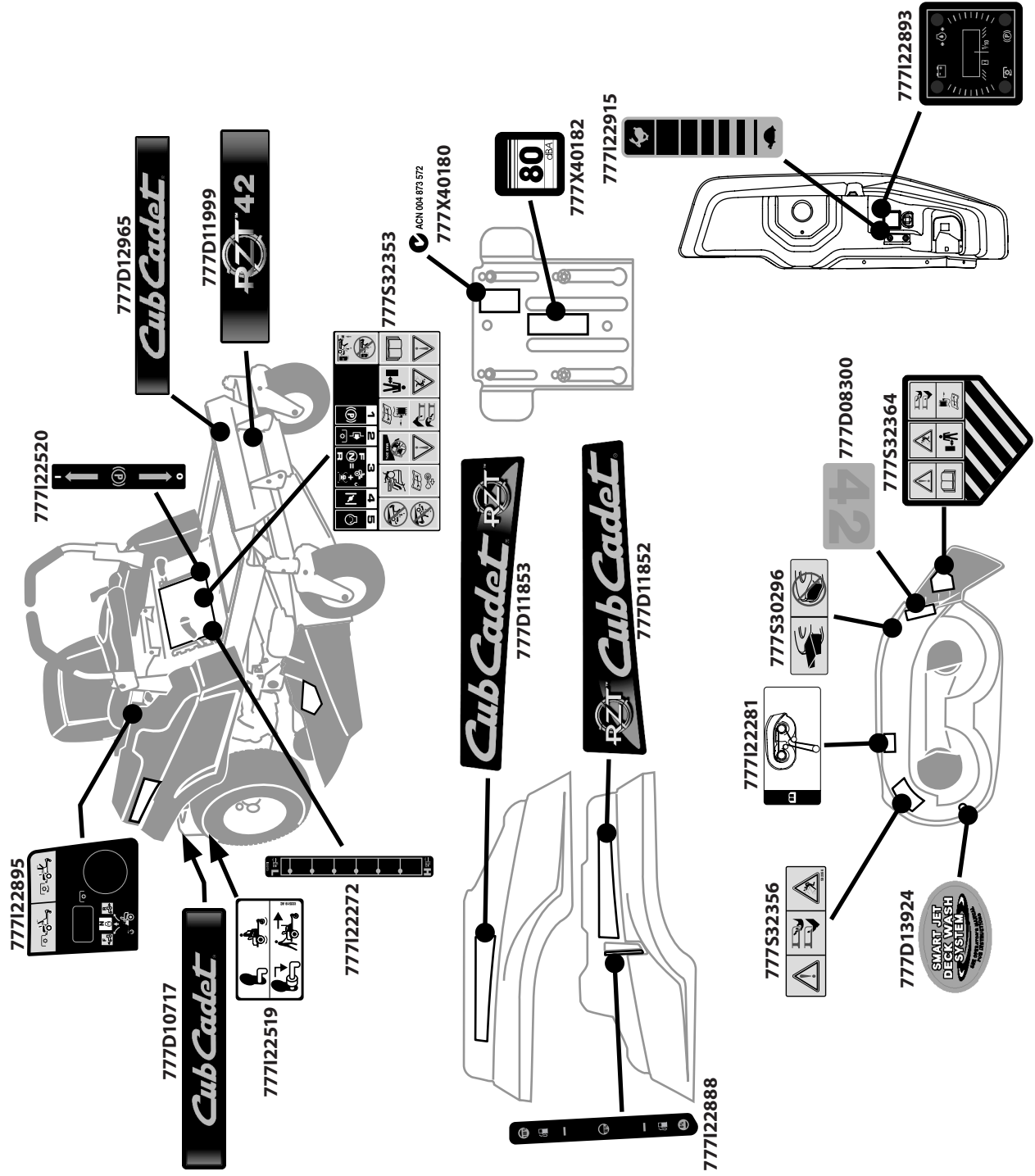
Ref.	Part Number	Description
1	KH-20-113-50-S	17 HP Decal
2	KH-20-113-54-S	Wing Set Decal
3	KH-25-113-39-S	Clear Laminate Decal

NOTE: Artwork is representative. Actual labels may differ depending on model and specification number.

Electrical Schematic







[illegible]



To order replacement parts, call a Customer Support Representative at (800) 965-4CUB.
Locate your nearest Cub Cadet dealer at (877) 282-8684
or visit www.cubcadet.com to find the nearest Cub Cadet dealer in your area.

CUB CADET LLC, P.O. BOX 361131 CLEVELAND, OHIO 44136-0019
