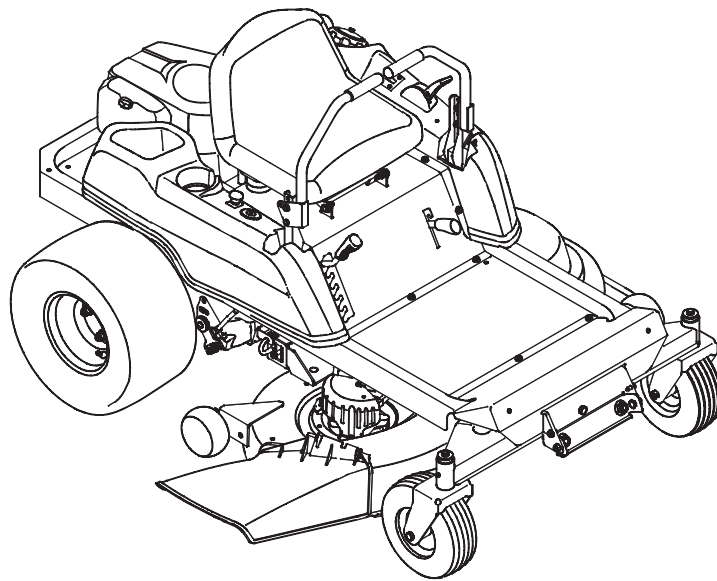


---

# *Cub Cadet.*

## ILLUSTRATED PARTS MANUAL



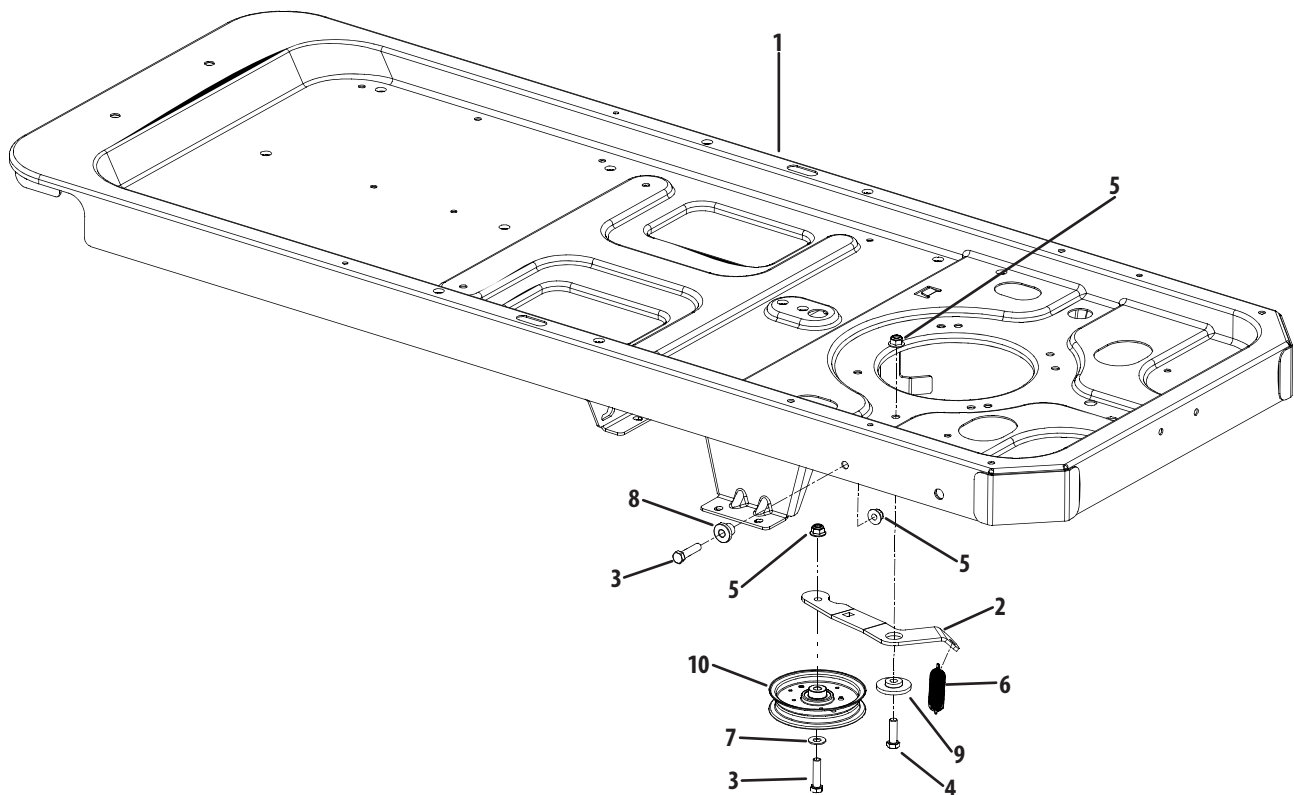
### **42" RZT Series Tractor**

---

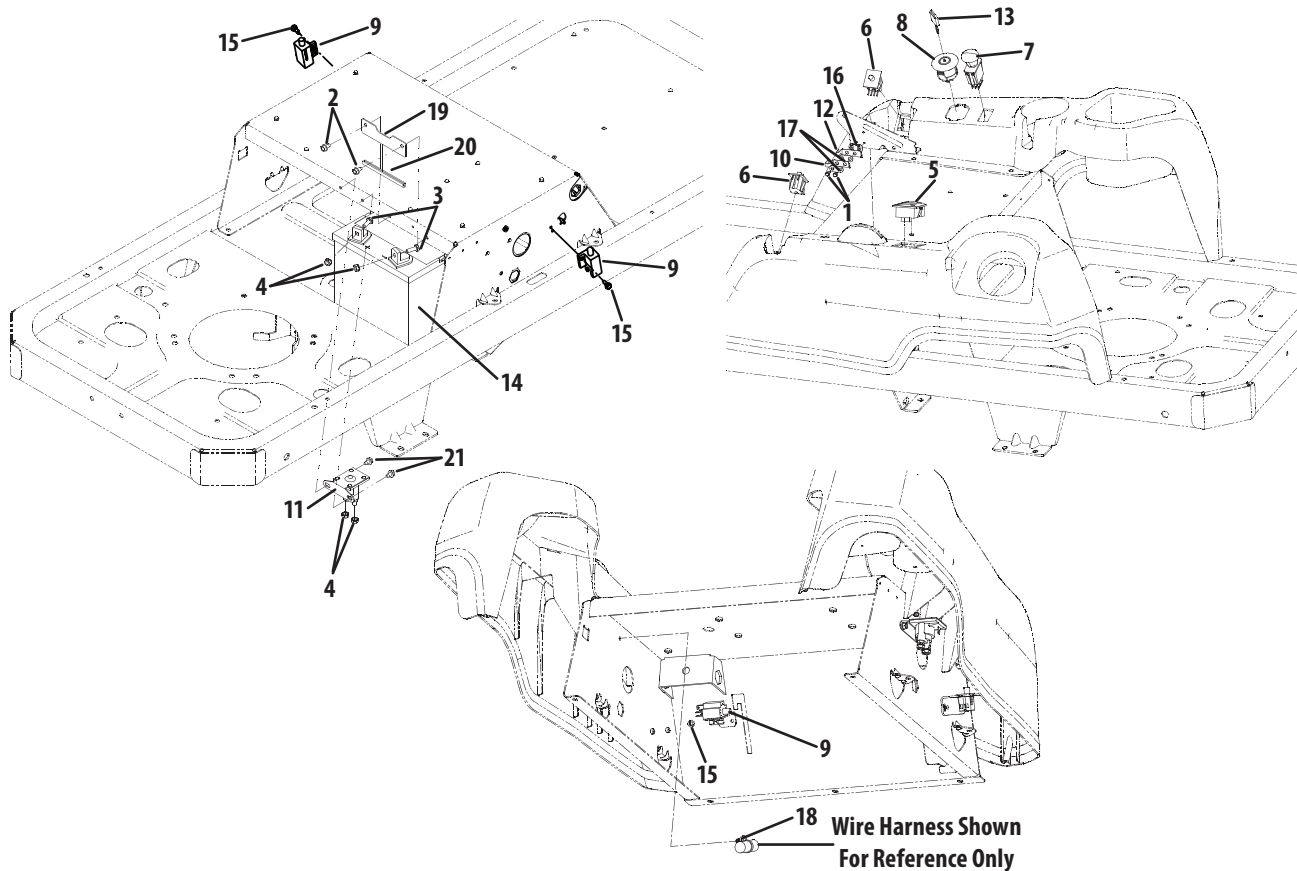
CUB CADET LLC, P.O. BOX 361131 CLEVELAND, OHIO 44136-0019

---

## Frame & Drive Idler Assembly



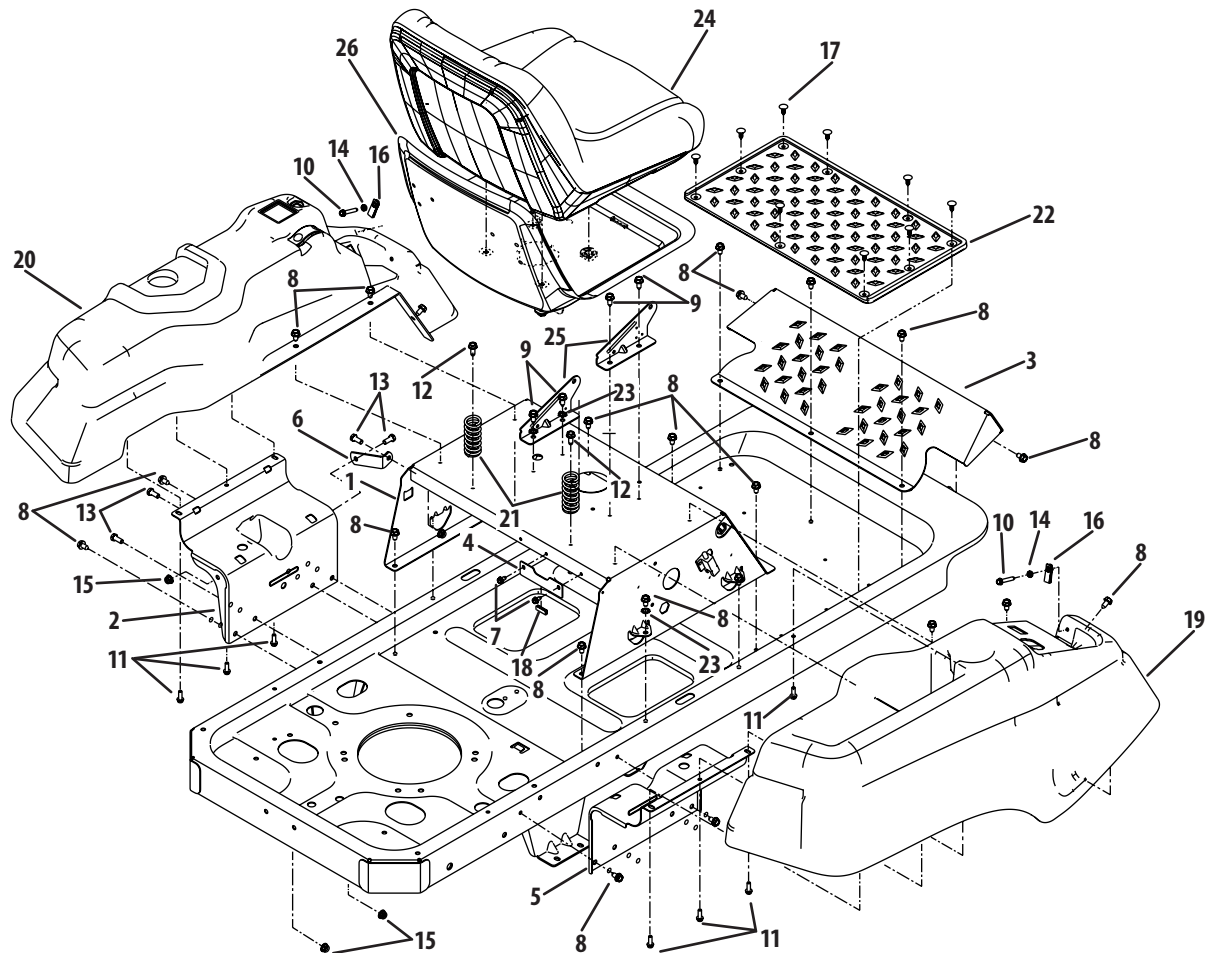
Ref.	Part Number	Description
1.	603-04303E	Frame Assembly
2.	703-05829	Drive Idler Arm
3.	710-0520	Hex Screw, $\frac{3}{8}$ -16 x 1.5
4.	710-3005	Hex Screw, $\frac{3}{8}$ -16 x 1.25
5.	712-04065	Flange Nut, $\frac{3}{8}$ -16
6.	732-0626	Extension Spring, .75 x 5.06
7.	736-0300	Flat Washer, .408 x .875 x .059
8.	738-04058	Shoulder Spacer, .39 x 1.0 x .7
9.	738-04162A	Shoulder Spacer, .884 x .19
10.	756-04129	Idler Pulley, 4.25 Dia.



Ref.	Part Number	Description
1.	710-0227	Hex Screw, #8-18 x .5
2.	710-0599	Hex Screw, ¼-20 x .5
3.	710-3015	Hex Screw, ¼-20 x .75
4.	712-0271	Hex Nut, ¼-20
5.	725-04022B	Hour Meter
6.	725-04165	Double Pole — Neutral Switch
7.	725-04174	PTO Switch
8.	725-04228	Ignition Switch
9.	725-04363	Interlock Switch
10.	725-1303	Outer Seat Swing Switch
11.	725-04621	Solenoid

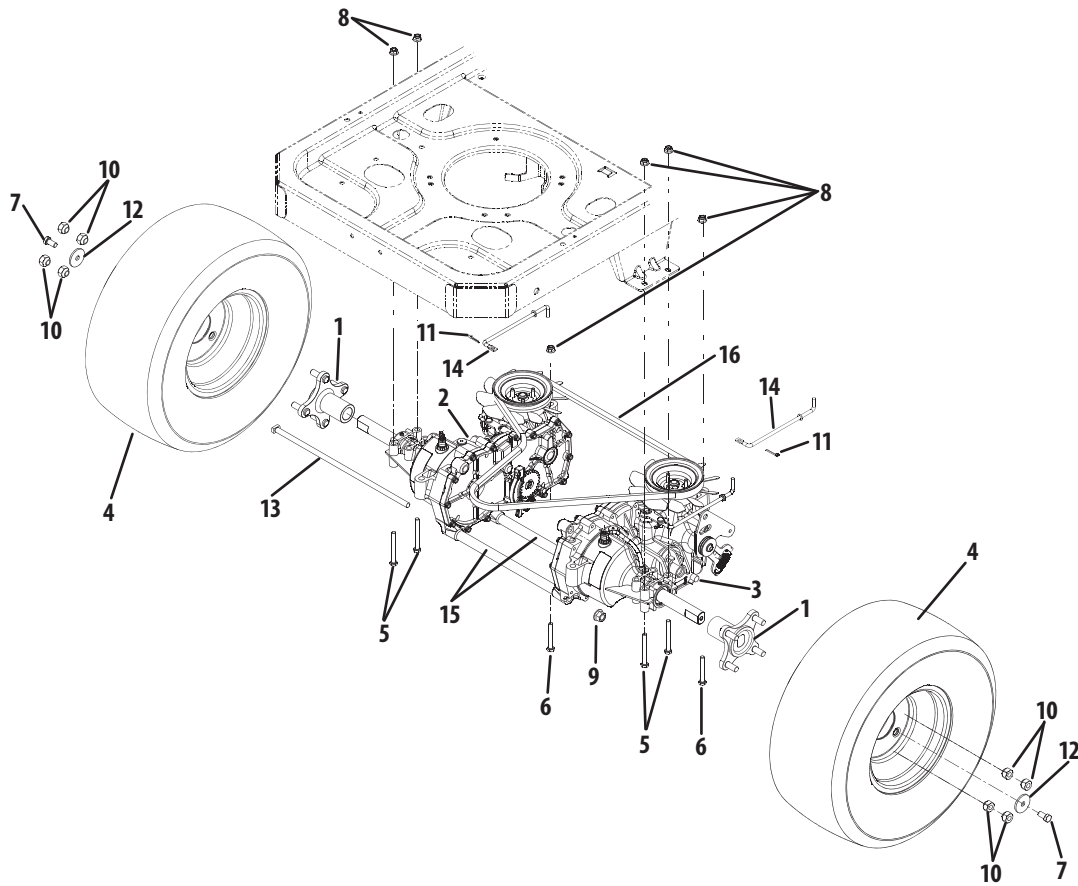
Ref.	Part Number	Description
12.	725-1439	Inner Seat Spring Switch
13.	725-1745	Key
14.	725-1737A	Battery, 235 CCA
15.	725-04237A	Shoulder Screw, #10-32 x .500
16.	726-0278	Insulator Boss Plate
17.	726-0279	Insulator Plate
18.	726-0470	Cable Tie
19.	703-05894	Batter Holdown
20.	731-0511	Trim Strip
21.	710-0653	Hex Screw, ¼-20 x .375

## Operator's Platform



Ref.	Part Number	Description
1.	603-04447A	Seat Frame Assembly
2.	603-04564	Console Bracket Assembly
3.	703-05373B	Foot Rest Bracket
4.	703-05894	Hold Down Bracket
5.	703-06451	Console Mounting Bracket
6.	703-06623	Fuel Tank Support Bracket
7.	710-0599	Hex Washer Screw, 1/4-20 x .500
8.	710-0604A	Hex Washer Screw, 5/16-18 x .625
9.	710-0726	Hex Washer Screw, 5/16-12 x .750
10.	710-0778	Hex Washer Screw, 1/4-20 x 1.500
11.	710-0895	Hex Washer Screw, 1/4-15 x .750
12.	710-1260A	Hex Washer Screw, 5/16-18 x .750
13.	710-3008	Screw, 5/16-18 x .750

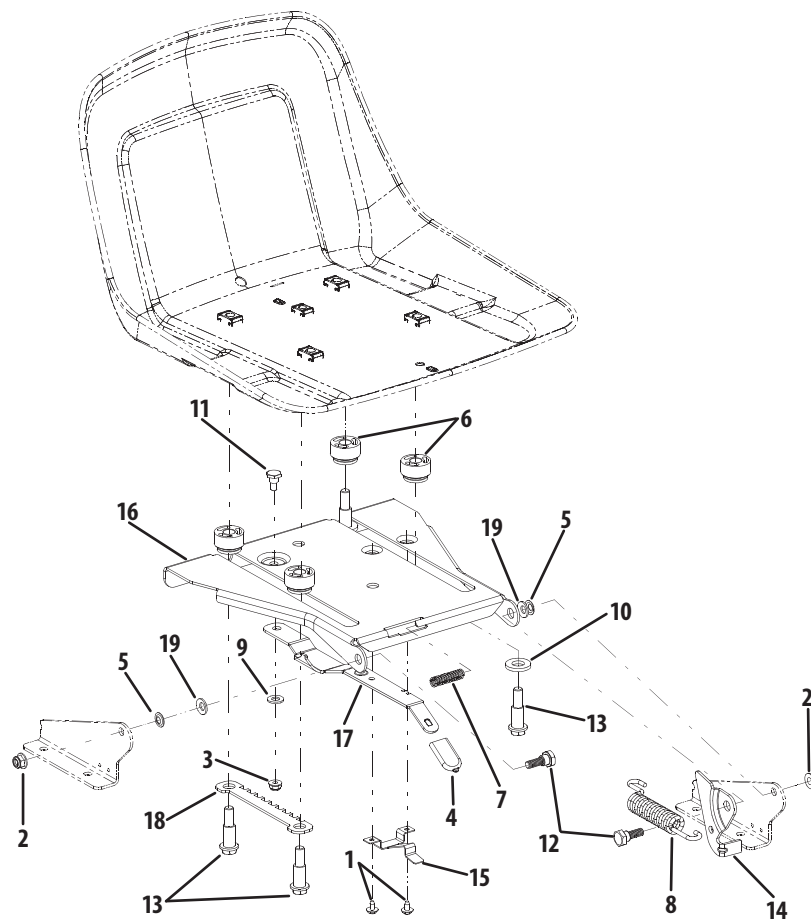
Ref.	Part Number	Description
14.	712-0298	Jam Nut, 1/4-20
15.	712-04063	Flange Lock Nut, 5/16-18
16.	712-04092	U-Type Speed Nut, 1/4-20
17.	726-3046	Ratchet Clip, .250
18.	731-0511	Trim Strip
19.	731-06233	Console (RH)
20.	731-06263	Console (LH)
21.	732-04035	Compression Spring, 1.28 x 3.125
22.	735-04082	Foot Pad
23.	736-0148	External Tooth Lock Washer, 3/8
24.	757-04041	High Back Seat
25.	783-1489C	Seat Mounting Bracket
26.	813-01002	Adjustable Seat



Ref.	Part Number	Description
1.	618-04317	Wheel Hub, $\frac{7}{16}$ -14 x 1.6
2.	618-04431A	Transmission Assembly, LH
3.	618-04432A	Transmission Assembly, RH
4.	634-04293	Wheel Assembly, 18 x 8.5 x 8
—	734-04246	Tire, 18 x 8.5 x 8
—	603-04173	Rim Assembly
—	734-0255	Valve Assembly
5.	710-0176	Hex Cap Screw, $\frac{5}{16}$ -18 x 2.75
6.	710-0395	Hex Cap Screw, $\frac{5}{16}$ -18 x 2.25
7.	710-3119	Hex Cap Screw, $\frac{3}{8}$ -16 x .75

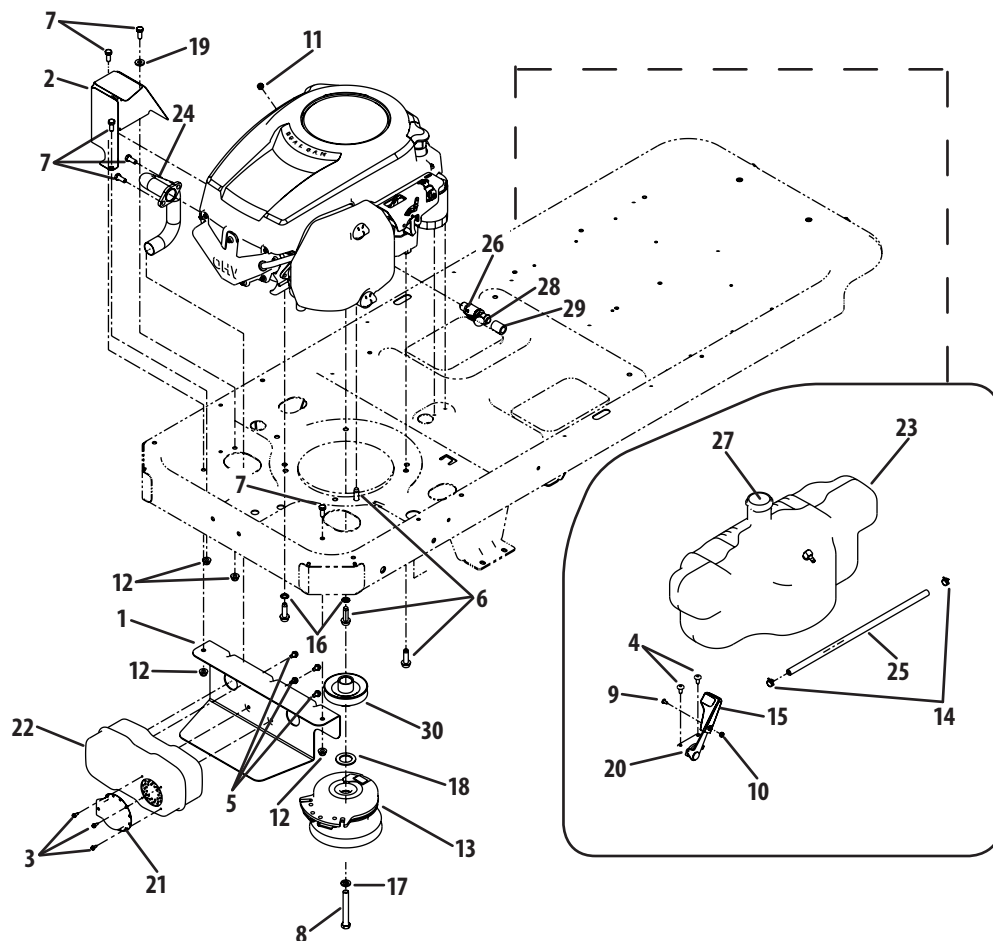
Ref.	Part Number	Description
8.	712-04063	Hex Flange Nut, $\frac{5}{16}$ -18
9.	712-0459	Hex Flange Nut, $\frac{7}{16}$ -20
10.	712-3050	Lug Nut, $\frac{7}{16}$ -14
11.	714-0507	Cotter Pin, $\frac{3}{32}$ x .75
12.	736-0227	Flat Washer, .39 x 1.5 .134
13.	738-04192	Rod, .405 x 14.0
14.	747-04217C	Bypass Rod
15.	750-04561	Tube, .45 x .69 x 10.2
16.	754-04043A	Type A Sec V-Belt, 57.7

## Seat Adjustment



Ref.	Part Number	Description
1.	710-1268	Hex Screw, #10-16 x .375
2.	712-04063	Hex Insert Flange Lock Nut, 5/16-18
3.	712-04064	Hex Insert Flange Lock Nut, 1/4-20
4.	720-0309A	Seat Adjustment Grip
5.	726-0201	Speed Nut, .3125
6.	731-04074	Seat Adjustment Spacer
7.	732-0499	Compression Spring, .41 x 1.5
8.	732-1184	Extension Spring, .84 Dia. x 4.6
9.	736-0204	Flat Washer, .344 x .62 x .033
10.	736-3019	Flat Washer, .531 x 1.062 x .134

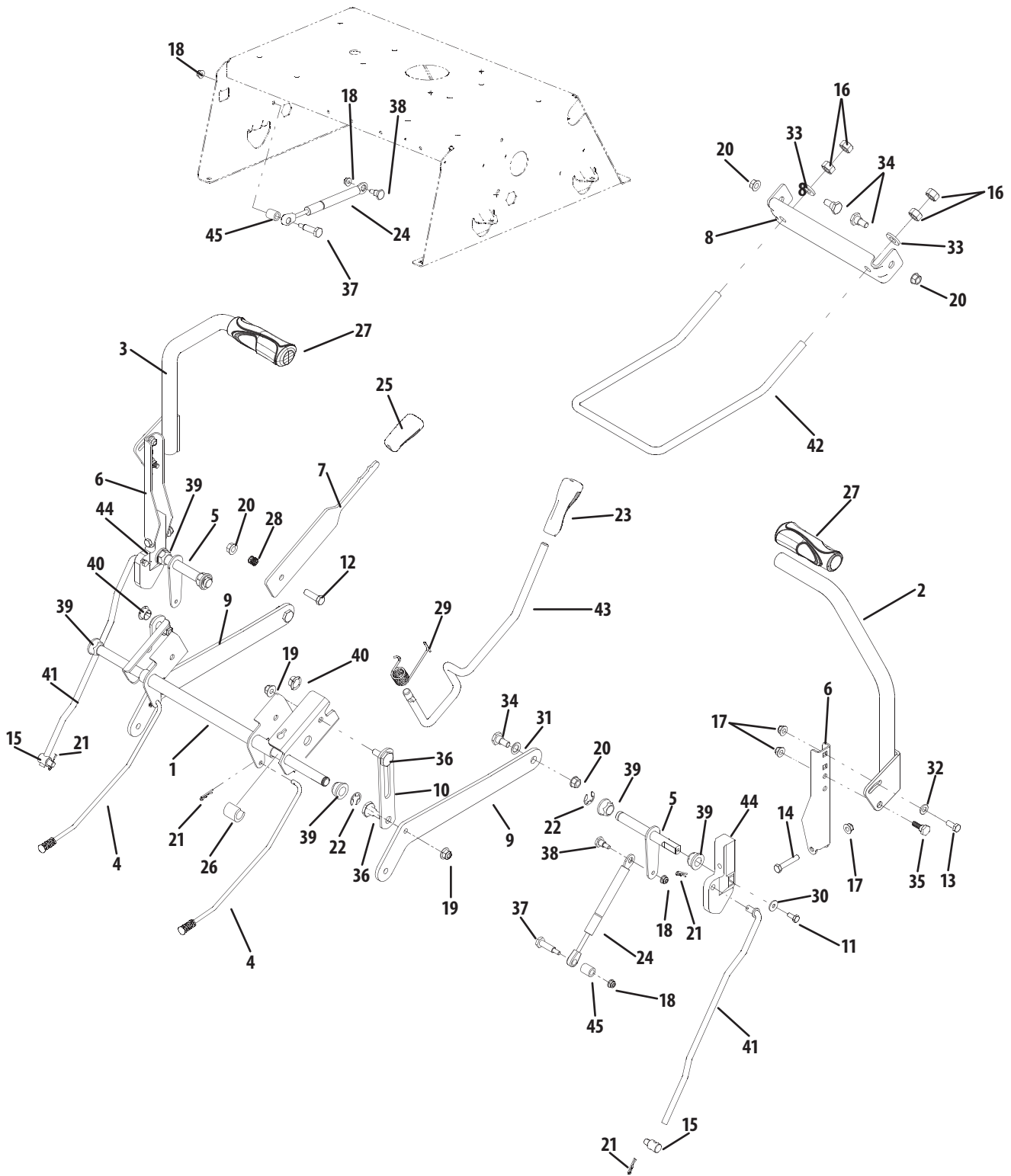
Ref.	Part Number	Description
11.	738-0137A	Shoulder Screw, .34 x .285 x 1/4-20
12.	738-0296	Shoulder Screw, .437 x .268 x 5/16-18
13.	738-0966A	Shoulder Screw, .5 x .925 x 3/8-16
14.	783-0209D	Seat Lift Bracket
15.	783-0611	Seat Adjustment Stop
16.	783-1489C	Seat Pivot Bracket
17.	783-0739A	Seat Adjustment Lever
18.	783-0753	Seat Adjustment Index Bracket
19.	736-0242	Belleville Washer, .34 x .872 x .06



Ref.	Part Number	Description
1.	703-05441A	Muffler Mounting Bracket
2.	703-05870	Muffler Tube Heat Shield
3.	710-0227	Hex Washer Head Screw, #8-18 x .5
4.	710-1017	Hex Washer Head Screw, 1/4-14 x
5.	710-0599	Hex Washer Head Screw, 1/4-20 x .5
6.	710-1315	Hex Washer Head Screw, 3/8-16 x 1.25
7.	710-3008	Hex Cap Screw, 5/16-18 x .75
8.	710-3157A	Hex Cap Lock Screw, 7/16-20 x 3.25
9.	710-3217	Truss Head Machine Screw, #8-32 x .375
10.	712-0142	Hex Nut, #8-32
11.	712-0271	Hex Sems Nut, 1/4-20
12.	712-04063	Hex Insert Flange Lock Nut, 5/16-18
13.	717-04376A	Electric PTO Clutch Assembly
14.	726-0205	Hose Clamp
15.	731-04914	Throttle Control Knob

Ref.	Part Number	Description
16.	736-0148	External Tooth Lock Washer, 3/8
17.	736-0171	Lock Washer, 7/16
18.	736-0277	Flat Washer, 1.031 x 1.62 x .095
19.	736-3008	Flat Washer, .344 x .75 x .12
20.	746-04161	Throttle Cable, 39.0 Lg
21.	751-0564B	Muffler Deflector
22.	751-0617A	Muffler
23.	751-10692	Fuel Tank
24.	751-10251	Exhaust Pipe
25.	751-10349	Low Permeation Fuel Hose
26.	751-10517	Oil Drain Valve
27.	751-10703	Fuel Cap
28.	751-3142	Oil Drain Valve Cap
29.	751-3141	Oil Drain Extension Hose
30.	756-0978B	Drive Pulley

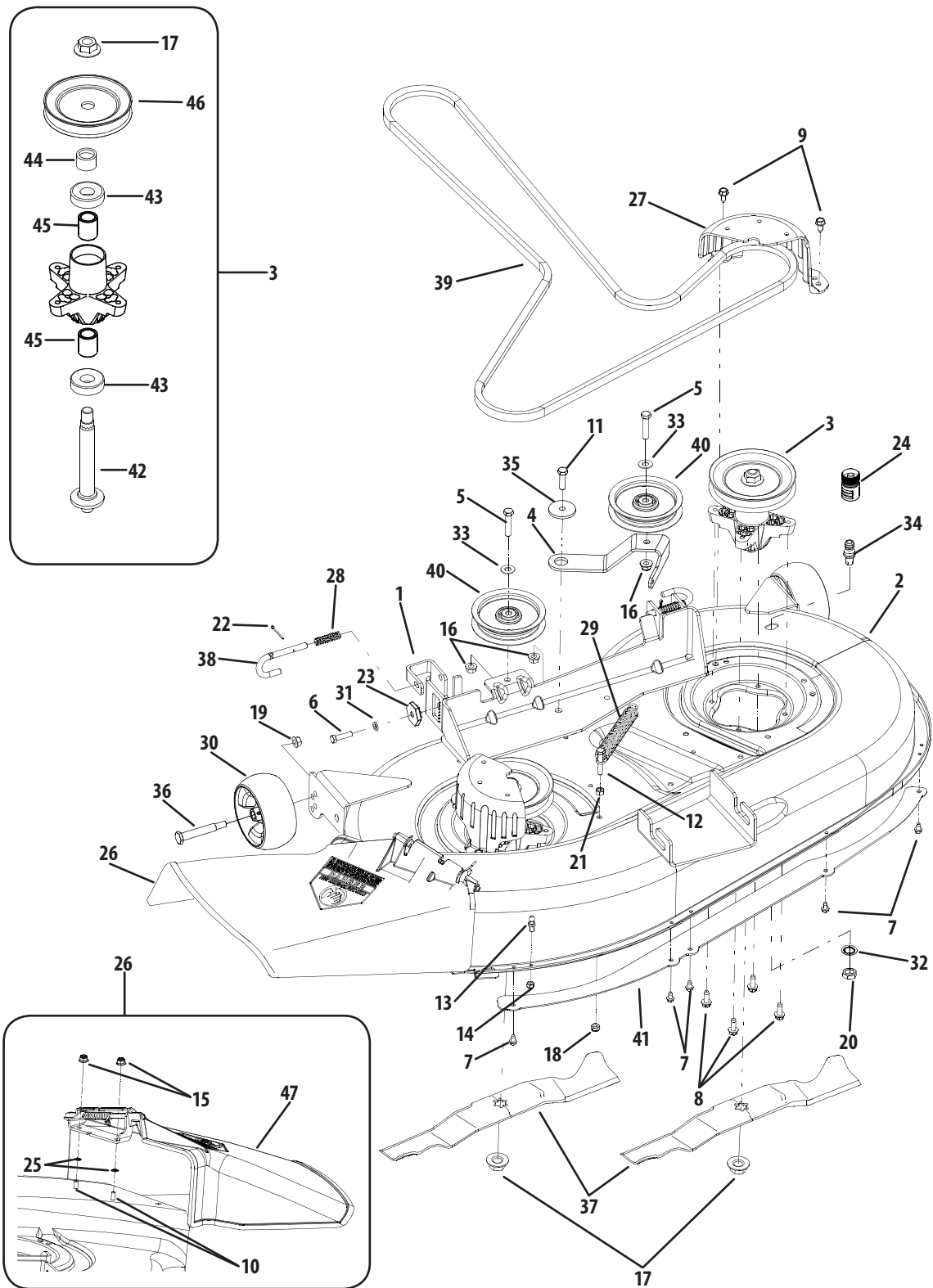
## Deck Lift & Controls



Ref.	Part Number	Description
1.	603-04160B	Deck Lift Shaft Assembly
2.	603-04322	Lapbar Lever RH
3.	603-04324	Lapbar Lever LH
4.	747-04651	Brake Rod
5.	647-04099	Control Shaft
6.	703-05387B	Lapbar Pivot Bracket
7.	703-05396A	Brake Handle
8.	703-05414A	Front Deck Hanger Bracket
9.	703-05793A	Deck Lift Arm
10.	703-06169	Lift Link Plate
11.	710-0433	Hex Lock Screw, ¼-20 x .62
12.	710-3005	Hex Cap Screw, ⅜-16 x 1.25
13.	710-3008	Hex Cap Screw, ⅝-18 x .75
14.	710-3180	Hex Cap Screw, ⅝-18 x 1.75
15.	711-0832	Ferrule, ⅜-24 x .375
16.	712-0206	Hex Nut, ½-13
17.	712-04063	Hex Flange Insert Lock Nut, ⅝-18
18.	712-04064	Hex Flange Insert Lock Nut, ¼-20
19.	712-04065	Hex Flange Insert Lock Nut, ⅜-16
20.	712-0431	Hex Flange Lock Nut, ⅜-16
21.	714-0104	Cotter Pin
22.	716-0106	E-Ring, .625 Dia.
23.	720-0311	Handle Grip

Ref.	Part Number	Description
24.	727-04141	Damper Cylinder
25.	731-04735	Handle Grip
26.	731-05732	Spacer, .62 x 1.0
27.	731-05882	Hand Grip
28.	732-0334	Compression Spring
29.	732-0874	Torsion Spring
30.	736-0270	Bell Washer, .265 x .75 x .062
31.	736-0272	Flat Washer, .51 x 1.0 x .06
32.	736-0275	Flat Washer, .344 x .688 x .065
33.	736-3019	Flat Washer, .531 x 1.062 x .134
34.	738-0143	Shoulder Screw, .498 x .340 x ⅜-16
35.	738-0296	Shoulder Screw, .437 x .268 x ⅝-18
36.	738-0507B	Shoulder Screw, .5 x .434 x ⅜-16
37.	738-0572	Shoulder Screw, .374 x 1.16 x ¼-20
38.	738-0974	Shoulder Screw, .375 x .38 x ¼-20
39.	741-0225	Hex Flange Bearing
40.	741-3074	Flange Bearing, .626 x .938 x .344
41.	747-04225A	Lapbar Control Rod
42.	747-04401A	Deck Front Hanger Rod
43.	747-04637	Deck Lift Handle Rod
44.	748-04169	Control Hub
45.	750-04676	Spacer, .385 x .630 x .75

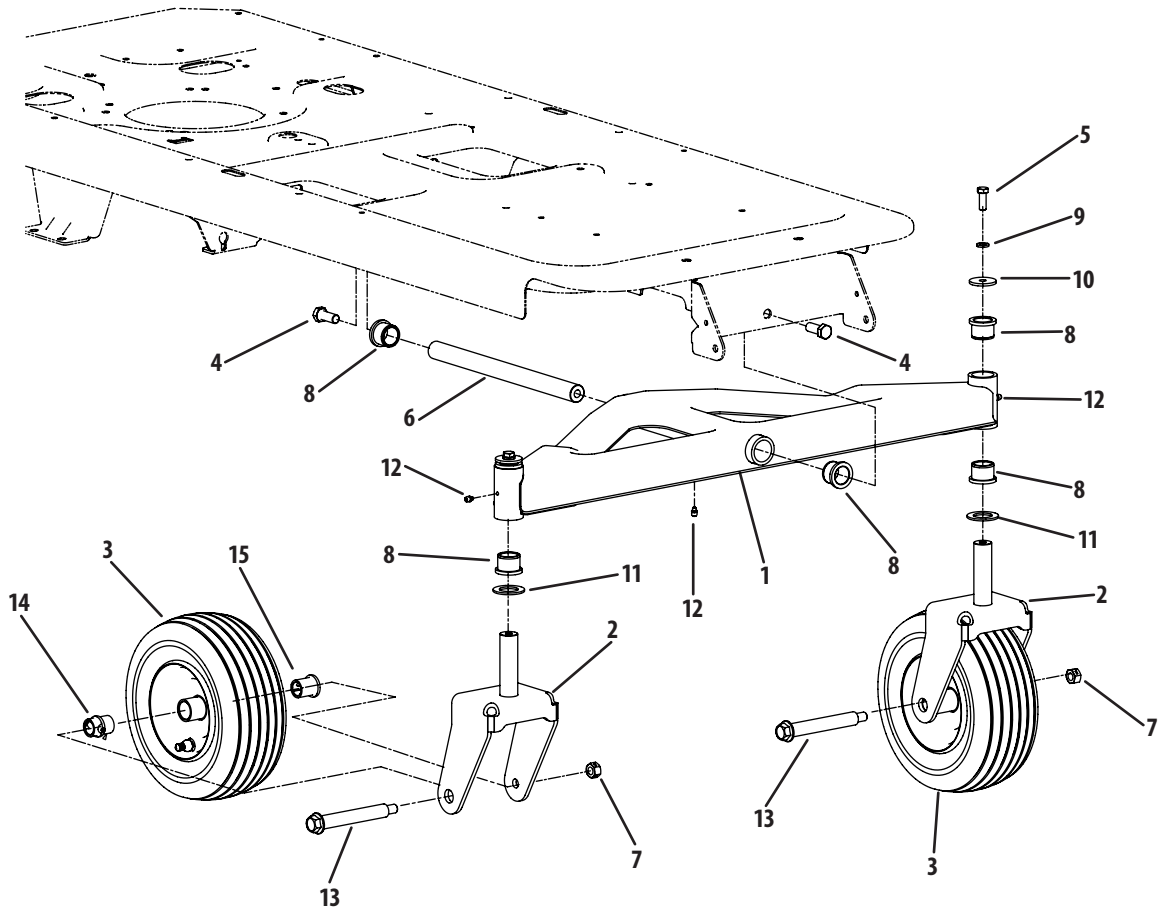
# Mower Deck



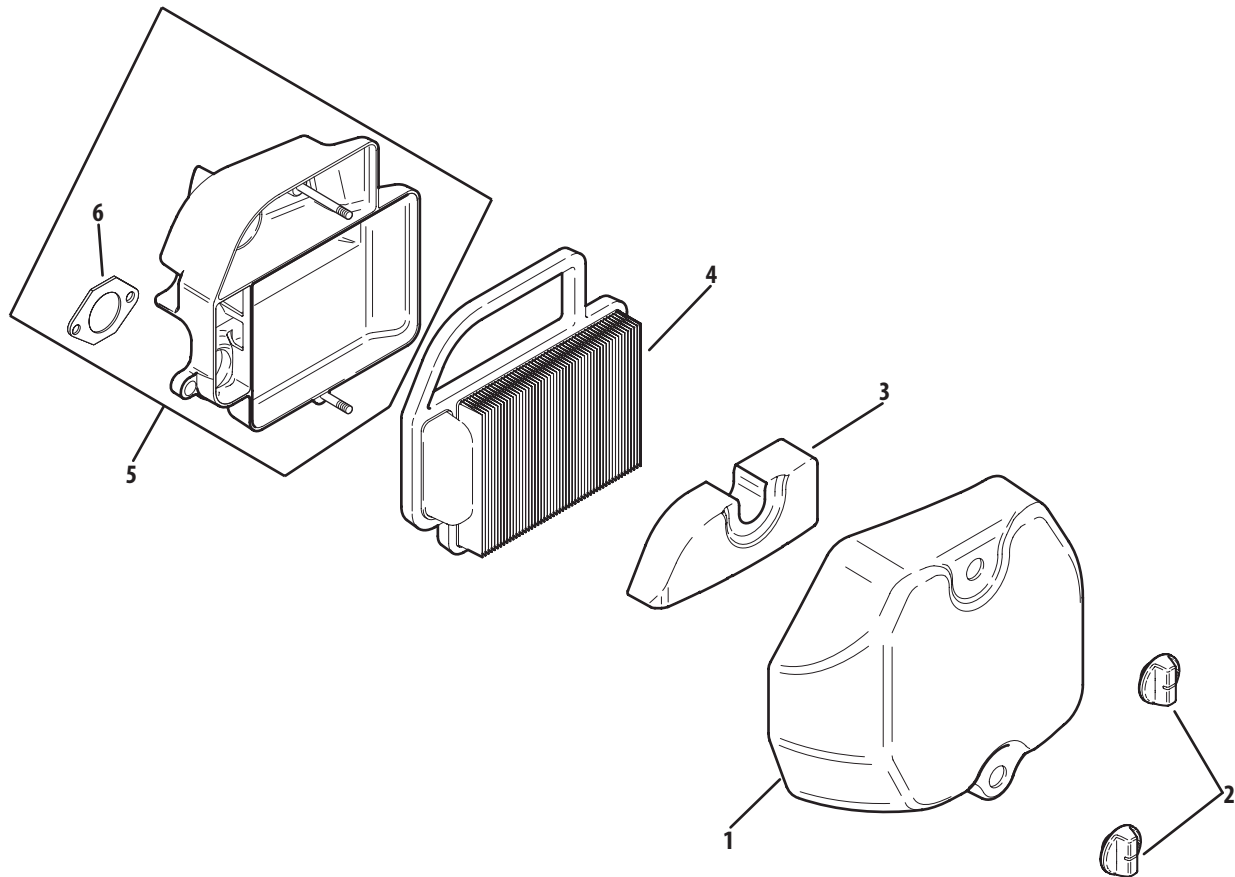
Ref.	Part Number	Description
1.	603-04156	Deck Lift Bracket
2.	603-04335C	Deck Housing
3.	618-0624	Spindle Assembly
4.	703-05824B	Idler Arm
5.	710-0347	Hex Cap Screw, 3/8-16 x 1.75
6.	710-0528	Hex Cap Screw, 5/16-18 x 1.25
7.	710-0599	Hex Washer Head Screw, 1/4-20 x .5
8.	710-1260A	Hex Washer Head Screw, 5/16-18 x .75
9.	710-0726	Hex Washer Head Screw, 5/16-12 x .75
10.	710-0751	Hex Cap Screw, 1/4-20 x .62
11.	710-3005	Hex Cap Screw, 3/8-16 x 1.25
12.	710-3180	Hex Cap Screw, 5/16-18 x 1.75
13.	711-04069	Grass Catcher Pin, 1/4-20
14.	712-0324	Hex Insert Lock Nut, 1/4-20
15.	712-04064	Hex Insert Flange Lock Nut, 1/4-20
16.	712-04065	Hex Insert Flange Lock Nut, 3/8-16
17.	712-0417A	Hex Flange Nut, 5/8-18
18.	712-0429	Hex Insert Lock, 5/16-18
19.	712-0431	Hex Flange Lock Nut, 3/8-16
20.	712-0641	Hex Nut, M16-1.5
21.	712-3010	Hex Nut, 5/16-18
22.	714-0470	Cotter Pin, 1/8 x 1.25
23.	717-04074	Deck Adjustment Gear
24.	721-04041	Water Nozzle Adapter

Ref.	Part Number	Description
25.	726-0233	Push Nut, .25 x .5
26.	731-1032B	Discharge Chute Assembly
27.	731-2231B	Belt Cover
28.	732-0306	Compression Spring
29.	732-0459	Extension Spring, .94 Dia. x 6.74
30.	734-04155	Deck Ball Wheel, 5.0
31.	736-0119	Lock Washer, 5/16
32.	736-0225	Lock Washer
33.	736-3072	Flat Washer, .38 x .93 x .11
34.	737-04003C	Deck Water Nozzle
35.	738-04162A	Shoulder Spacer, .884 x .19
36.	738-3056	Shoulder Screw, .5 x 2.5 x 3/8-16
37.	942-0616A	Blade, 3 in 1, 21.23
38.	747-1116	Deck Hanger Rod
39.	754-04137	V-Belt Type A Sec x 114.1
40.	756-04129	Idler Pulley, 4.25 Dia
41.	783-1146A	Deck Skirt
42.	738-01010A	Spindle Shaft, 5.75
43.	741-0919	Ball Bearing
44.	748-0433	Spacer, .820 x 1.15 x .73
45.	750-1000	Spacer, .8 x 1.10 x 1.322
46.	756-1227	Deck Pulley, 6.3 Dia
47.	731-1031C	Chute Deflector

## Front Axle

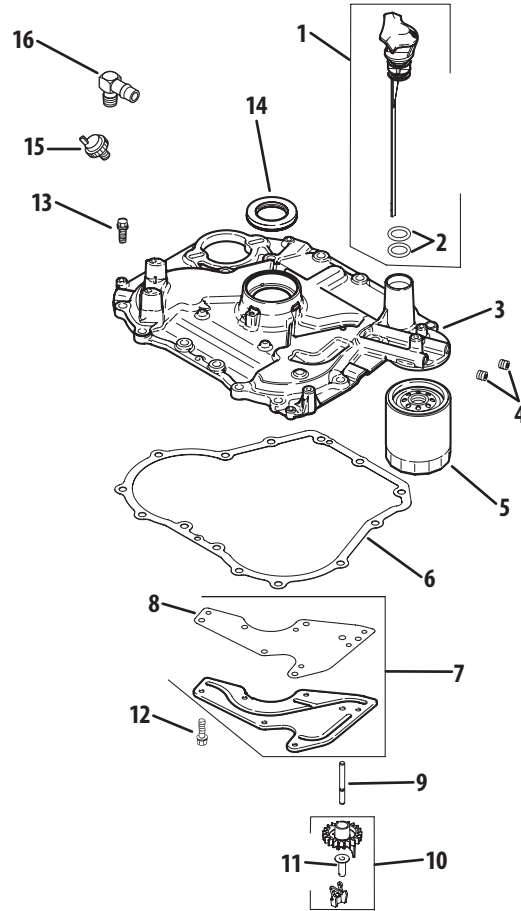


Ref.	Part Number	Description
1.	603-04148C	Front Pivot Axle
2.	603-04308	Castor Wheel Bracket
3.	634-04212A	Wheel Assembly, 11.0 x 4.0 x 5.0
—	734-0255	Air Valve
4.	710-04186	Hex Lock Screw, ½-13 x 1.25
5.	710-0514	Hex Cap Screw, ⅜-16 x 1.0
6.	711-04228	Axle Shaft
7.	712-3022	Hex Lock Nut, ½-13
8.	731-05500	Flange Bearing, 1.0 x 1.246
9.	736-0169	Lock Washer, ⅜
10.	736-0227	Flat Washer, .39 x 1.5 x .134
11.	736-0250	Flat Washer, 1.0 x 1.75 x .107
12.	737-3000	Lube Fitting, ⅜ Drive
13.	738-04182A	Shoulder Screw, .75 x 4.75 x ⅞-14
14.	741-0516B	Flange Bearing, .76 x 1.0 x 1.2
15.	741-0990B	Flange Bearing, .76 ID w/Lube Ftg.

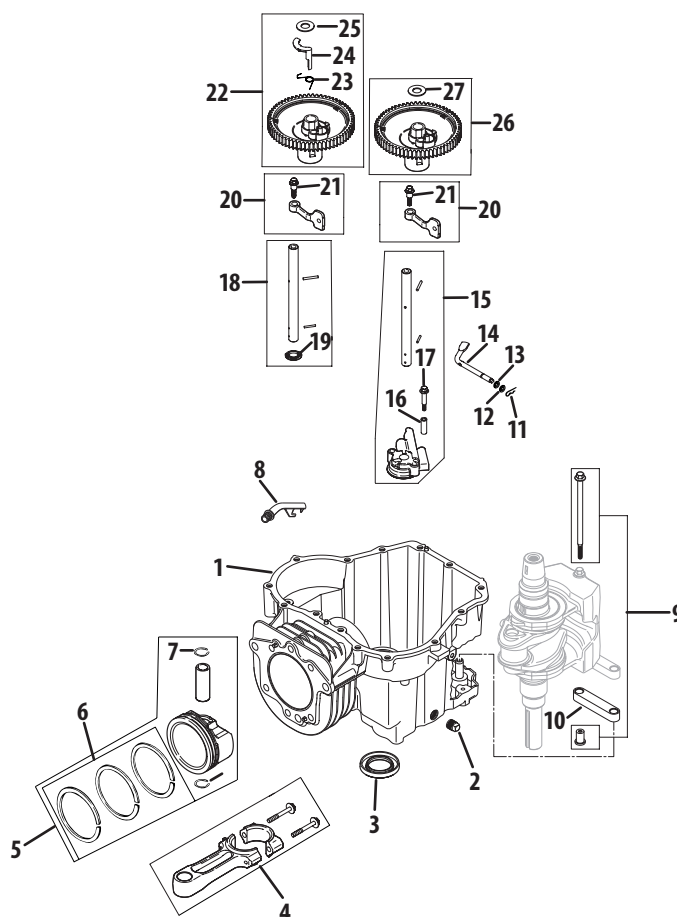


Ref.	Part Number	Description
1.	KH-20-096-04-S	Air Cleaner Cover
2.	KH-25-341-05-S	Cover Knob
3.	KH-20-083-03-S	Pre-Cleaner Element
4.	KH-20-083-02-S	Air Cleaner Element
5.	KH-20-094-01-S	Air Cleaner Base Kit (Includes 6)
6.	KH-12-041-02	Air Cleaner Base Gasket

## Oil Pan/Lubrication

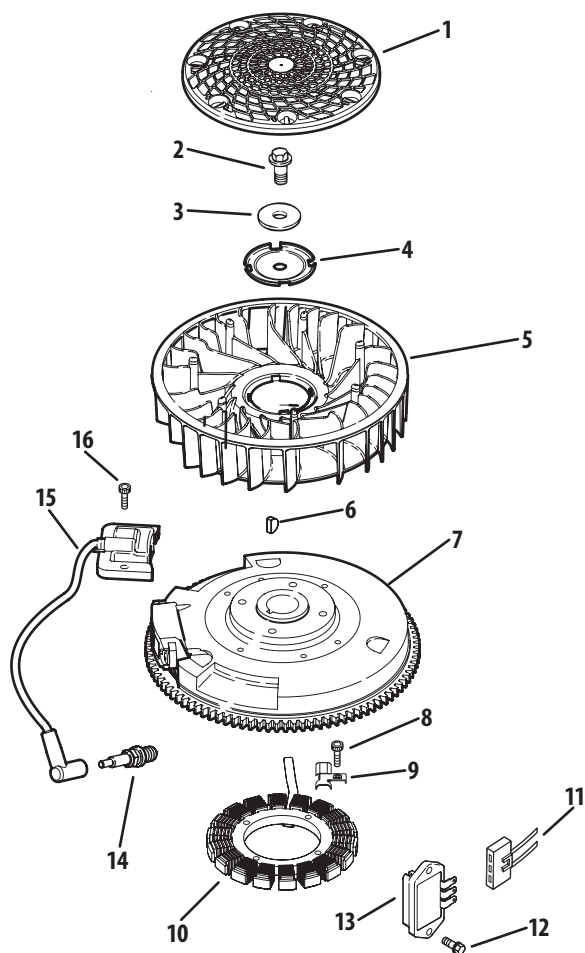


Ref.	Part Number	Description
1.	KH-20-040-03-S	Dipstick w/ 2 O-Rings (Inc. 2)
2.	KH-20-153-01-S	O-Ring
3.	KH-20-009-21-S	Closure Plate Assembly Kit
4.	KH-25-139-60-S	CTSK Pipe Plug, 1/8"
5.	KH-52-050-02-S	Oil Filter
6.	KH-20-041-01-S	Closure Plate Gasket
7.	KH-20-096-02-S	Oil Passage Cover Kit (Inc. 8)
8.	KH-20-041-02-S	Oil Passage Gasket
9.	KH-20-144-03-S	Governor Cross Shaft
10.	KH-25-310-01-S	Governor Gear Kit (Inc. 11)
11.	KH-12-380-01-S	Governor Regulating Pin
12.	KH-M-545013-S	Flg Thd Frm Screw, M5 x 0.8 x 13
13.	KH-25-086-127-S	Hex Flange Screw, 1/2 Dog Point
14.	KH-20-032-01-S	Oil Seal
15.	KH-25-099-27-S	Oil Pressure Switch
16.	KH-25-155-02-S	90° Connector Hose

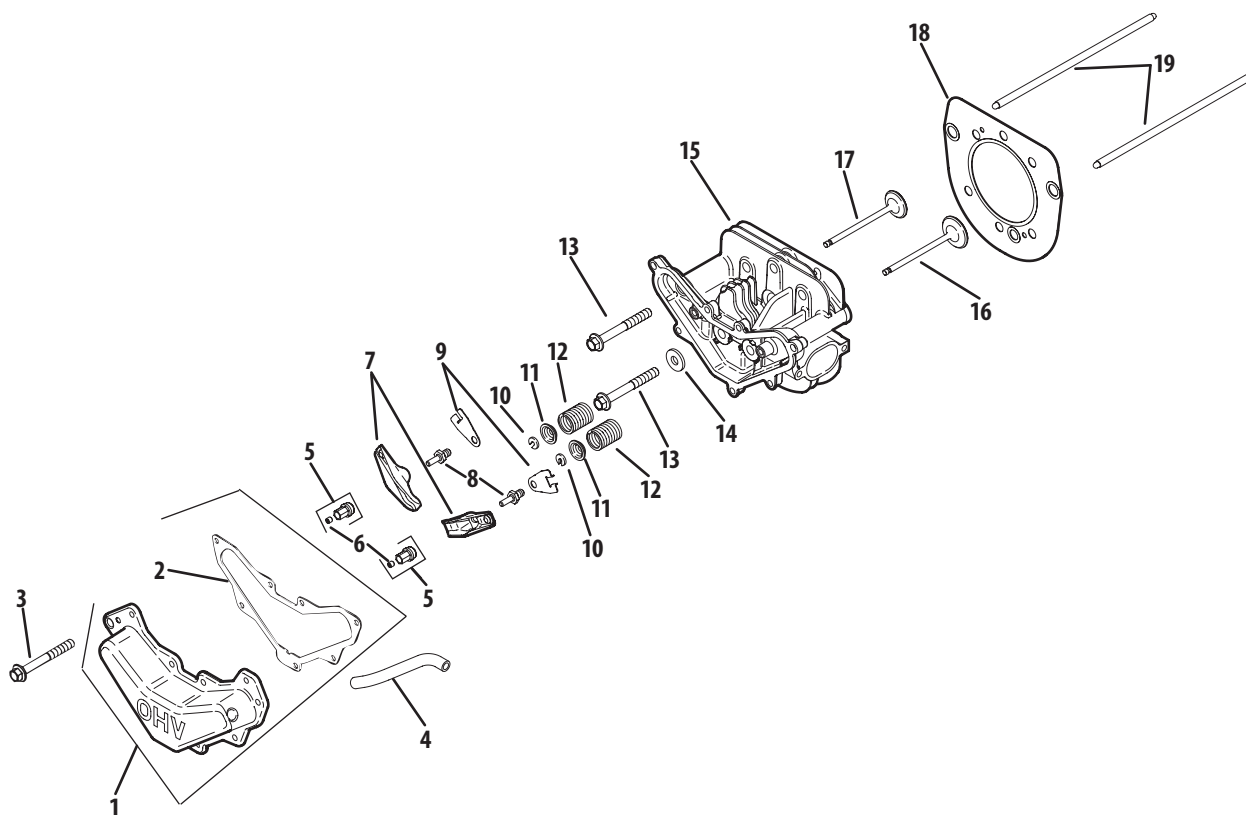


Ref.	Part Number	Description
1.	—	Crankcase (USE KH-20-522-02)
2.	KH-25-139-57-S	Square Head Pipe Plug, 3/8"
3.	KH-20-032-01-S	Oil Seal
4.	KH-20-067-04-S	Connecting Rod
5.	KH-20-874-01-S	Piston w/ Ring Set Kit (Inc. 6 & 7)
6.	KH-20-108-01-S	Ring Set (94mm)
7.	KH-20-018-04-S	Piston Pin Retainer
8.	KH-20-123-02-S	Drainback Tube
9.	KH-20-380-16-S	Locating Pin Kit
10.	KH-20-186-02-S	Balance Weight Linkage
11.	KH-12-154-05-S	Hitch Pin Clip
12.	KH-M-631015-S	Flat Washer 6mm
13.	KH-X-25-102-S	Flat Washer, 1/4"
14.	KH-20-144-02-S	Governor Cross Shaft

Ref.	Part Number	Description
15.	KH-20-393-02-S	Oil Pump Assembly Kit (Inc. 16 & 17)
16.	KH-20-112-02-S	Oil Pump Screw Spacer
17.	KH-20-086-13-S	Oil pump Screw
18.	KH-20-144-11-S	Cam Center Shaft Kit
19.	KH-20-468-08-S	Thrust Washer
20.	KH-20-090-01-S	Cam Lever Assembly Kit
21.	KH-20-086-06-S	Shd Thd Frm Screw, M6 x 1 x 26
22.	KH-20-010-04-S	Camshaft Assembly Kit (Inc. 23-25)
23.	KH-20-089-06-S	ACR Spring
24.	KH-20-044-16-S	ACr Weight
25.	KH-20-468-03-S	ACR Thrust Washer
26.	KH-20-010-04-S	Camshaft Assembly Kit (Inc. 27)
27.	KH-20-468-03-S	ACR Thrust Washer



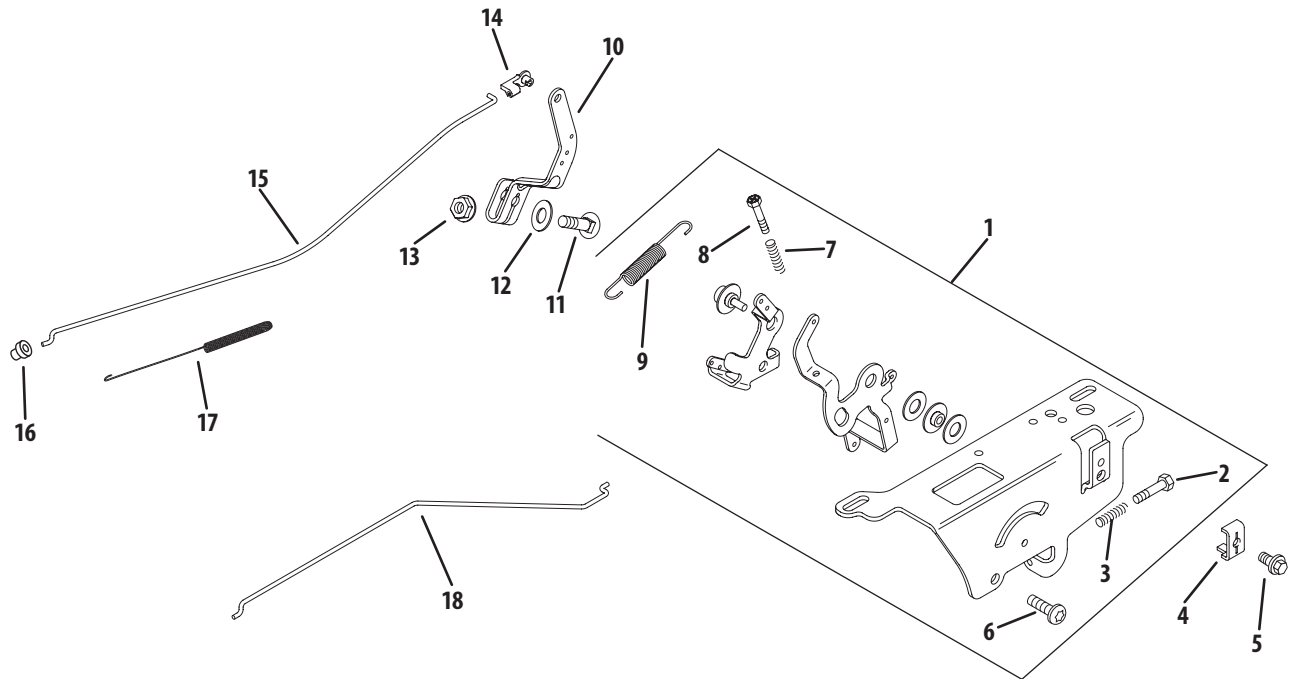
Ref.	Part Number	Description
1.	KH-20-162-02-S	Grass Screen
2.	KH-25-086-125-S	Flg Screw, M10 x 1.5 x 45
3.	KH-12-468-09-S	Flat Washer, 1 <sup>3</sup> / <sub>32</sub> "
4.	KH-20-146-05-S	Fan Mounting Plate
5.	KH-20-157-01-S	Fan
6.	KH-X-42-15-S	Key, 3 <sup>1</sup> / <sub>16</sub> " x 5 <sup>1</sup> / <sub>8</sub> "
7.	KH-20-025-40-S	Flywheel
8.	KH-20-086-22-S	Skt Thd Frm Screw, M5 x 0.8 x 25
9.	KH-20-154-04-S	Sator Wire Clip
10.	KH-237878-S	15 Amp Stator Kit
11.	KH-25-155-41-S	Connector (3 Contact)
12.	KH-M-545020-S	Flg Thd Frm Screw, M5 x 0.8 x 20
13.	KH-41-403-10-S	Rectifier-Regulator
14.	KH-12-132-02-S	Spark Plug
15.	KH-20-584-3-S	Ignition Module
16.	KH-M-561025-S	Skt Thd Frm Screw, M5 x 0.8 x 25
—	KH-20-237-01-S	Cable Clamp (Not Shown)
—	KH-20-176-09-S	Wiring Harness (Not Shown)



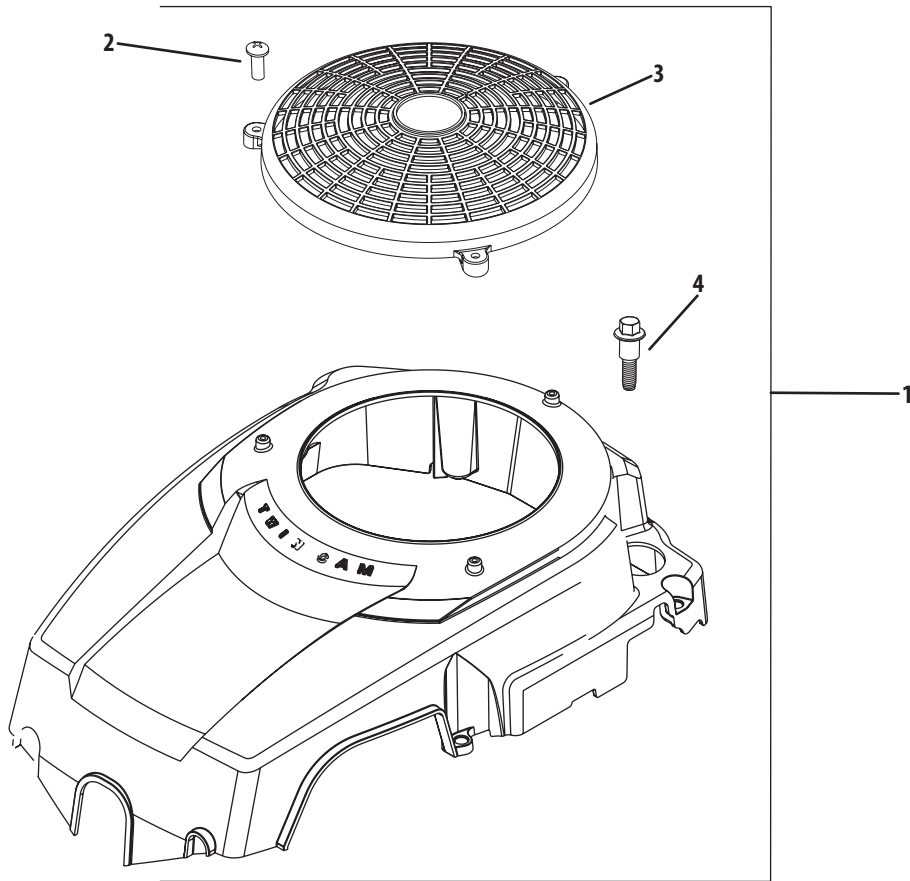
Ref.	Part Number	Description
1.	KH-20-096-07-S	Valve Cover Kit (Inc. 2)
2.	KH-20-041-13-S	Valve Cover Gasket
3.	KH-M-645020-S	Flg Thd Frm Screw, M6 x 1.0 x 20
4.	KH-20-326-20-S	Breather Hose
5.	KH-20-599-02-S	Rocker Arm Pivot (Inc. 6)
6.	KH-20-086-04-S	Set Screw
7.	KH-20-186-01-S	Rocker Arm
8.	KH-20-072-08-S	Rocker Stud
9.	KH-20-146-03-S	Push Rod Guide Plate
10.	KH-20-062-01-S	Retainer Lock

Ref.	Part Number	Description
11.	KH-20-173-01-S	Valve Spring Cap
12.	KH-20-089-03-S	Valve Spring
13.	KH-20-086-02-S	Flg Screw, M10 x 1.5 x 80
14.	KH-12-468-05-S	Flat Washer, 13/32"
15.	KH-20-318-07-S	Cylinder Head Assembly
16.	KH-20-016-01-S	Exhaust Valve
17.	KH-20-017-01-S	Intake Valve
18.	KH-20-841-01-S	Cylinder Hd. Gasket (Inc. 2, 13 & 14)
19.	KH-20-411-04-S	Push Rod

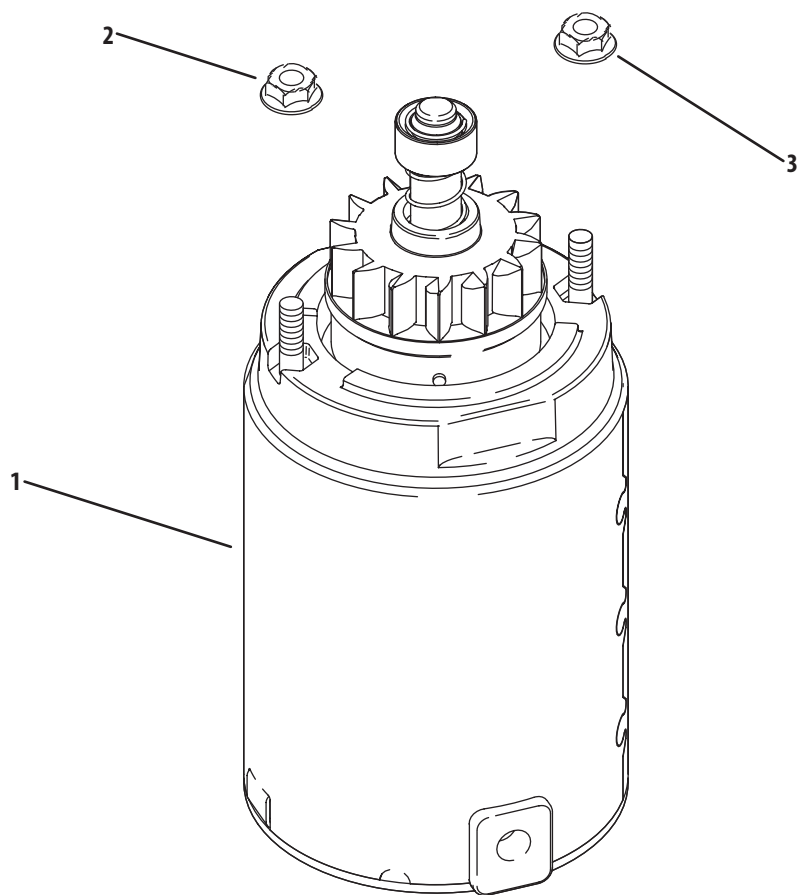
## Starting System



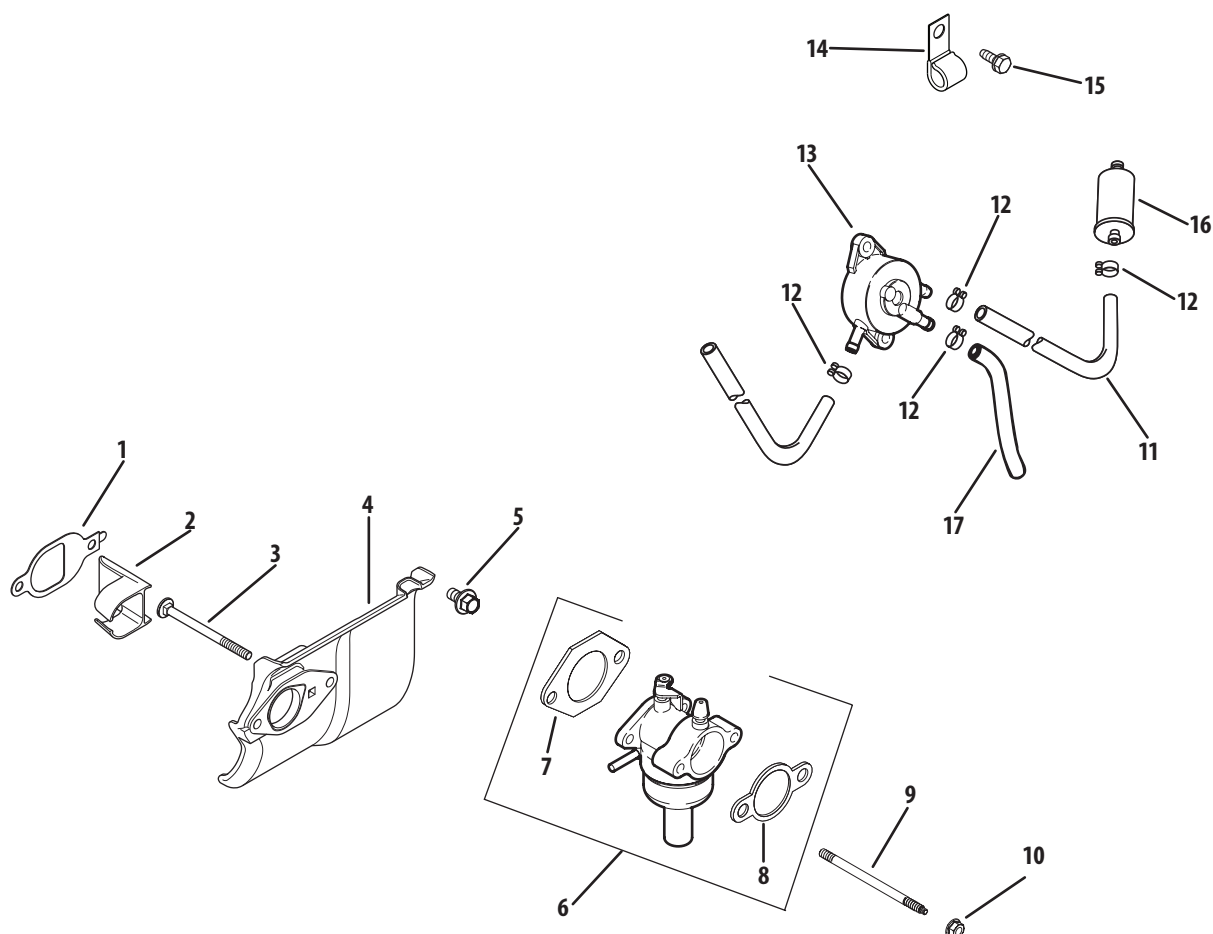
Ref.	Part Number	Description
1.	KH-20-536-05-S	Speed Cntrl. Ass. Kit (Inc. 2, 3 & 6-9)
2.	KH-20-086-10-S	Phl Thd Frm Screw, M4 X 0.7 X 25
3.	KH-12-089 11-S	Speed Control Spring (Short)
4.	KH-12-237-01-S	Cable Clamp
5.	KH-M-545016-S	Flg Thd Frm Screw, M5 X 0.8 X 16
6.	KH-M-664020-S	Lbd Skt Screw, M6 x 1.0 x 20
7.	KH-12-089-11-S	Speed Control Spring (Short)
8.	KH-20-086-10-S	Phl Thd Frm Screw, M4 X 0.7 X 25
9.	KH-20-089-11-S	Governor Spring
10.	KH-20-090-02-S	Governor Lever
11.	KH-52-211-04-S	Rd Hd Sq Nck Bolt, 1/4-20 X 1"
12.	KH-X-22-11-S	Internal Tooth Lock Washer, 1/4"
13.	KH-12-100-07-S	Hex Flange Nut, 1/4-20"
14.	KH-25-158-11-S	Throttle Linkage Bushing
15.	KH-20-079-07-S	Throttle Linkage
16.	KH-25-158-08-S	Linkage Retaining Bushing
17.	KH-20-089-10-S	Linkage Spring
18.	KH-20-079-05-S	Choke Linkage



Ref.	Part Number	Description
1.	KH-20-755-11-S	Blower Housing & Guard (Inc. 2-4)
2.	KH-24-086-41-S	Phillips Head Screw, #11-16 X 1/2"
3.	KH-20-314-06-S	Fixed Guard
4.	KH-20-086-06-S	Shd Thd Frm Screw, M6 X 1 X 26



Ref.	Part Number	Description
1.	KH-20-098-05-S	Starter Assembly
2.	KH-25-100-31-S	Free Spinning Flg Nut, #10-24
3.	KH-12-100-07-S	Hex Flg Nut, 1/4-20"
—	KH-12-221-02-S	Brush Kit (Not Shown)
—	KH-20-211-02-S	Thru Bolt (Not Shown)
—	KH-20-227-01-S	Drive End Cap
—	KH-20-755-12-S	Drive Kit



Ref.	Part Number	Description
1.	KH-20-041-18-S	Heat Deflector Gasket
2.	KH-20-332-01-S	Intake Port Insert
3.	KH-20-072-07-S	Carburetor Stud
4.	KH-20-265-07-S	Heat Deflector Kit
5.	KH-M-651020-S	Flg Screw, M6 x 1.0 x 20
6.	KH-20-853-33-S	Carburetor Kit (Inc. 7 & 8)
7.	KH-12-041-01-S	Carburetor Gasket
8.	KH-12-041-02-S	Air Cleaner Base Gasket
9.	KH-20-072-05-S	Stud, M6 X 1.0 X 100
10.	KH-M-641060-S	Flg Nut, M6 X 1.0

Ref.	Part Number	Description
11.	KH-25-111-34-S	Fuel Line, 24"
12.	KH-25-237-14-S	Spring Hose Clamp, 1/2"
13.	KH-24-393-16-S	Fuel Pump
14.	KH-47-154-01-S	Cable Clip
15.	KH-M-445010-S	Thrd Frm Screw, M4 X 0.7 X 10
16.	KH-25-050-22-S	Fuel Filter
17.	KH-12-353-10-S	Fuel Line
—	KH-25-454-05-S	Tie (Not Shown)
—	KH-X-22-11-S	Internal Tooth Lock Washer, 1/4" (NS)



This image shows a full page of white paper with horizontal grey ruling lines. The word "Notes" is written in a large, bold, black font at the top left corner. A vertical grey line runs down from the top of the page, separating the title area from the main body of the notes. There are 20 horizontal ruling lines in total, providing space for writing.



To order replacement parts, call the Customer Dealer Referral Line at 1-877-282-8684  
or visit [www.cubcadet.com](http://www.cubcadet.com) to find the nearest Cub Cadet dealer in your area.

---

**CUB CADET LLC, P.O. BOX 361131 CLEVELAND, OHIO 44136-0019**

---