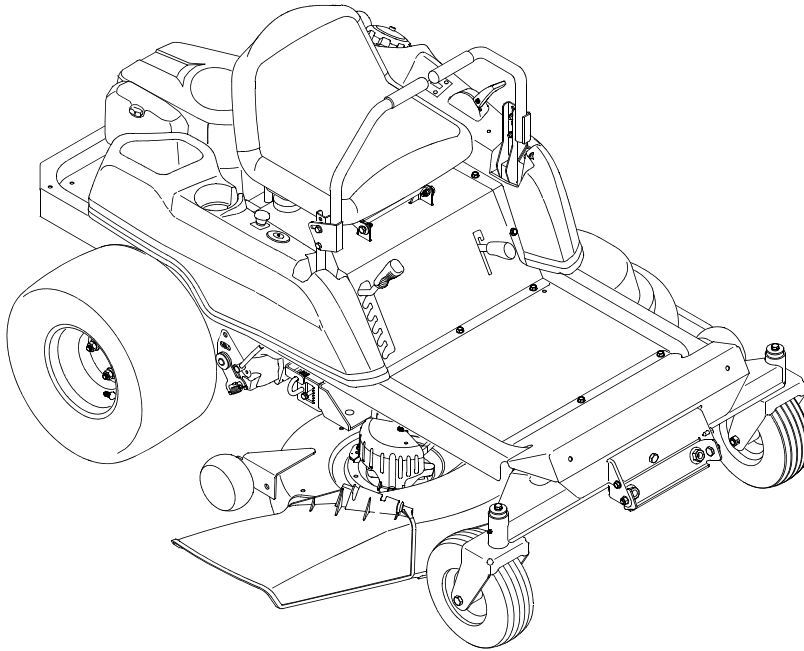


# *Cub Cadet*®

## Parts Manual



## **RZT SERIES**

## **TRACTOR**

### **Model Number**

### **RZT 42**

### **w/42" Mower Deck**

CUB CADET LLC P.O. BOX 361131 CLEVELAND, OHIO 44136-0019 [[www.cubcadet.com](http://www.cubcadet.com)]

PRINTED IN U.S.A.

FORM NO. 769-01125D  
(2/07)

## MODEL RZT 42

### TABLE OF CONTENTS

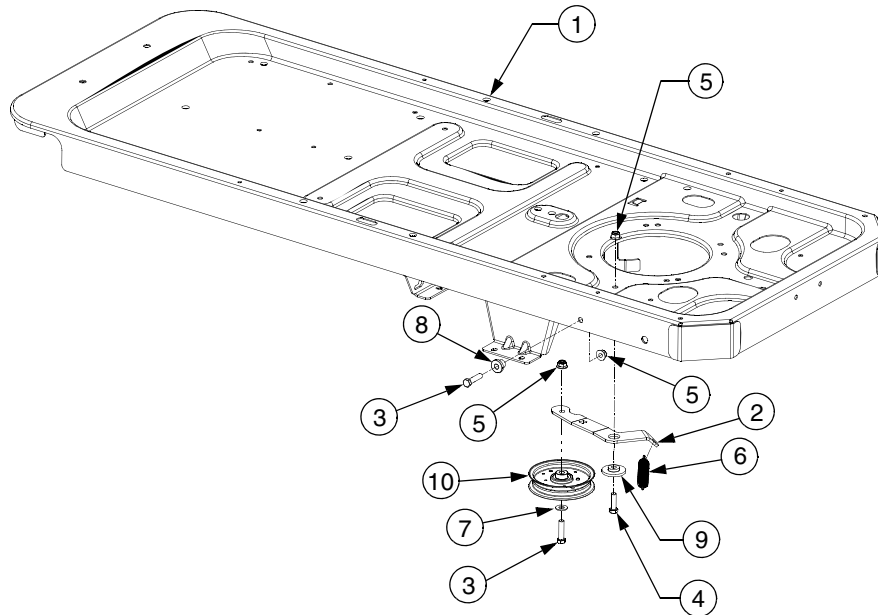
DESCRIPTION	PAGE
Frame and Drive Idler Assembly .....	3
Electrical .....	4
Operator's Platform .....	6
Controls and Deck Lift .....	8
Rear Drive and Wheels .....	10
Seat Adjustment .....	11
RH Transmission .....	12
LH Transmission .....	14
42" Mower Deck .....	16
Engine Connections .....	18
Front Axle .....	20
Engine .....	
Air Intake/Filtration .....	21
Crankcase .....	22
Cylinder Head .....	24
Engine Controls .....	25
Fuel System .....	26
Starter/Ignition-Electrical/Blower Housing .....	27
Oil Pan/Lubrication .....	28

**NOTE:** For **painted parts**, please refer to the list of color codes below. Please add the applicable color code, wherever needed, to the part number to order a replacement part.

For instance, if a part, numbered 700-xxxx, is painted Cub Yellow, the part number to order would be 700-xxxx-0716.

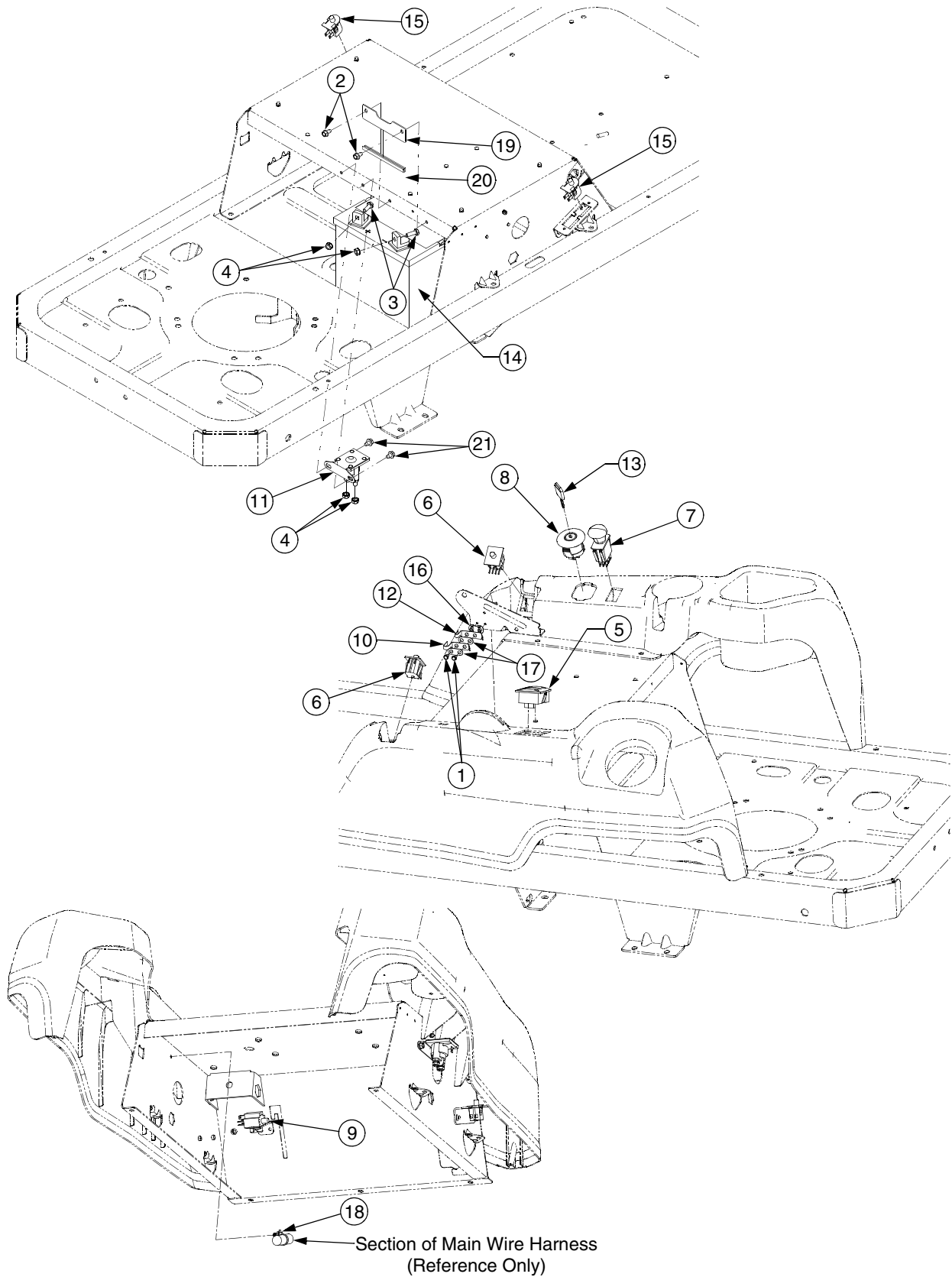
Cub Yellow: 0716  
Cub Beige: 0499  
Powder Black: 0637

## FRAME AND DRIVE IDLER ASSEMBLY



REF. NO.	PART NUMBER	DESCRIPTION	QTY.
1	603-04303C	Frame Assembly .....	1
	777D10717	Graphic, Cub Cadet .....	1
	777I22489	Graphic, Release Lever .....	2
2	703-05829	Idler Arm, Drive .....	1
3	710-0520	Screw, Hex Cap, 3/8-16 x 1.5 GR5 .....	3
4	710-3005	Screw, Hex Cap, 3/8-16 x 1.25 GR5 .....	1
5	712-04065	Nut, Hx Insert Flange Lck, 3/16 GrF .....	4
6	732-0626	Spring, Extension, .75 x 5.06 .....	1
7	736-0300	Washer, Flat, .408 x .875 x .059 .....	1
8	738-04058	Spacer, Shoulder, .39 x 1.0 x .7 .....	2
9	738-04162A	Spacer, Shoulder, .884 x .19 .....	1
10	756-04129	Pulley, Idler, 4.25 Dia. ....	1

## ELECTRICAL



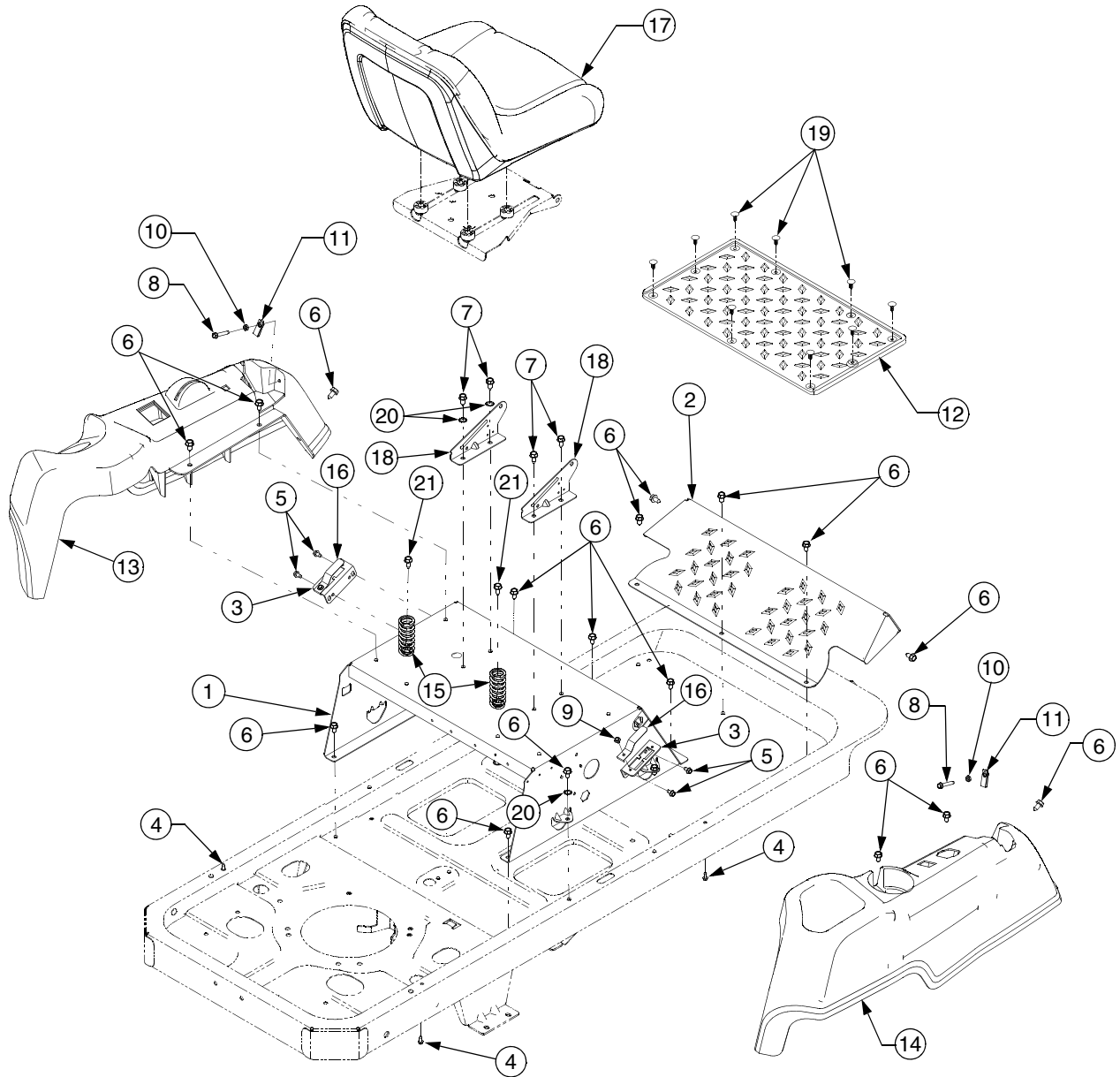


## ELECTRICAL

REF. NO.	PART NUMBER	DESCRIPTION	QTY.
1	710-0227	Screw, Hex Wash. Hd. Tapp ..... #8-18 x .5	2
2	710-0599	Screw, Hex Wash. Hd. Tapp, ..... 1/4-20 x .5	2
3	710-3015	Screw, Hex Cap, 1/4-20 x .75 GR5 ..	2
4	712-0271	Nut, Hex Sems, 1/4-20 .....	4
5	725-04022B	Meter, Hour .....	1
6	725-04165	Switch, Dbl. Pole - Neutral .....	2
7	725-04174	Switch, PTO .....	1
8	725-04228	Switch, Ignition .....	1
9	725-04232	Switch, 3-Pole, (NC-NO-NO) - Brake	1
10	725-1303	Switch, Outer Seat Spring .....	1
11	725-1426A	Solenoid .....	1
12	725-1439	Switch, Inner Seat Spring .....	1
13	925-1745	Key .....	1
14	725-1707D	Battery, 235 CCA .....	1
15	725-3166	Switch, Snap Mount (N.C.) - Reverse	2
16	726-0278	Plate, Insulator Boss .....	1
17	726-0279	Plate, Insulator .....	2
18	726-0470	Tie, Cable .....	2
19	703-05894	Bracket, Battery Holddown .....	1
20	731-0511-5	Strip, Trim .....	4.5in
21	710-0653	Screw, Hex Wash. Hd. Tapp, ..... 1/4-20 x .375	2
†	725-04434	Harness Assembly, Wire .....	1

† NOT SHOWN

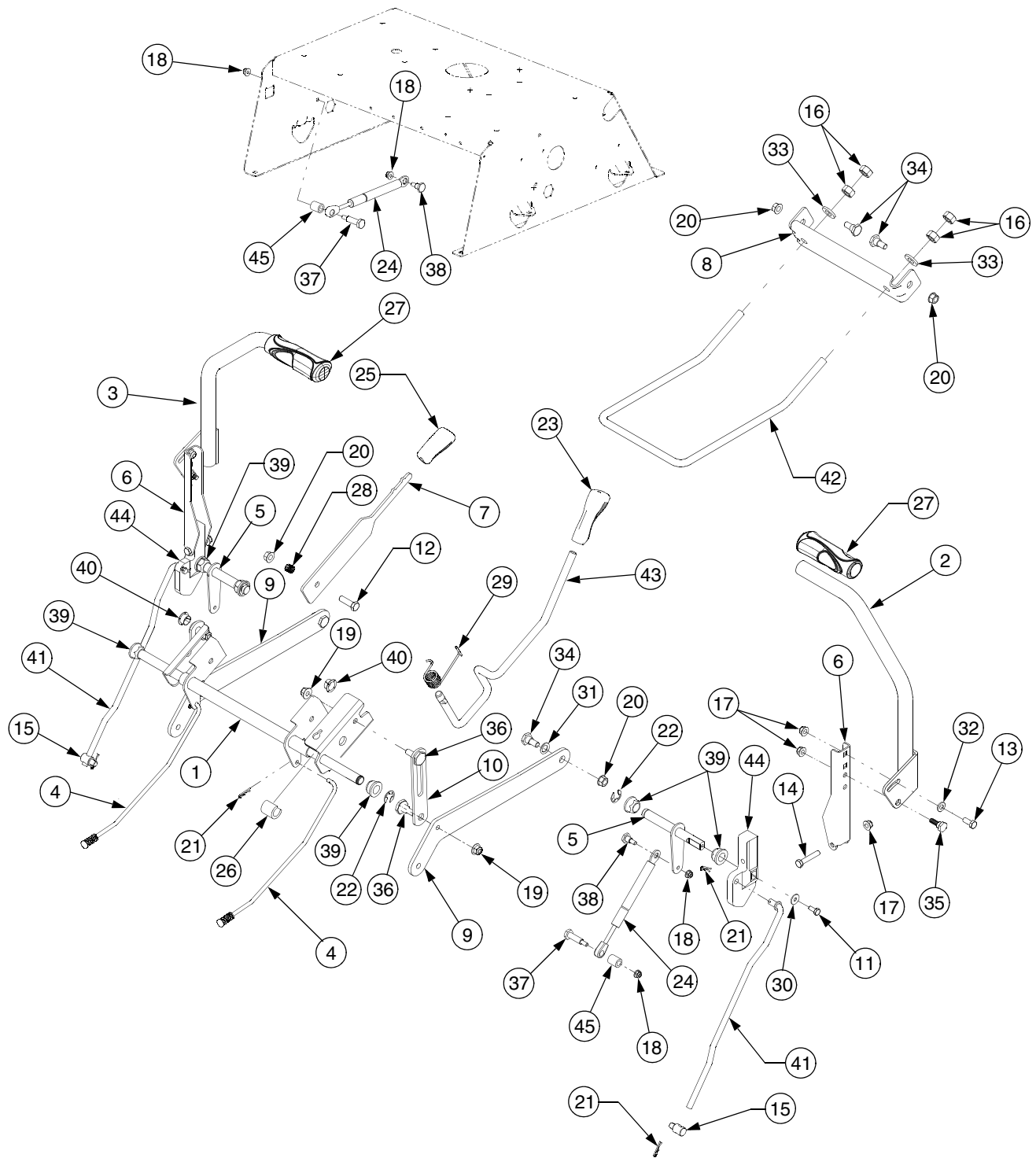
## OPERATOR'S PLATFORM



## OPERATOR'S PLATFORM

REF. NO.	PART NUMBER	DESCRIPTION	QTY.
1	603-04326B	Frame, Seat Box .....	1
	777S32836	Graphic, Warning .....	1
	777I22764	Graphic, Park Brake .....	1
	777I22763	Graphic, Deck Height .....	1
2	703-05373B	Bracket, Foot Rest .....	1
	777D10716	Graphic, Cub Cadet .....	1
	777D10632	Graphic, RZT 42 .....	1
3	703-05467	Bracket, Switch Mounting .....	2
4	710-04261	Screw, Hex Wash. Hd Tapp .....	4
		#12-16 x .50	
5	710-0599	Screw, Hex Wash. Hd. Tapp. ....	4
		1/4-20 x .5	
6	710-0604A	Screw, Hex Wash. Hd. Tapp .....	20
		5/16-18 x .625	
7	710-0726	Screw, Hex Wash. Hd. Tapp .....	4
		5/16-12 x .75	
8	710-0778	Screw, Hex Wash. Hd. Tapp. ....	2
		1/4-20 x 1.5	
9	710-1268	Screw, Hex Wash. Hd Tapp .....	2
		#10-16 x .375	
10	712-0298	Nut, Hex Jam, 1/4-20 GR2 .....	2
11	712-04092	Nut, U Type Speed, 1/4-20 .....	2
12	735-04082	Pad, Foot .....	1
13	731-04662C	Console, LH .....	1
	777I22749	Graphic, Instruction .....	1
	777D10554	Graphic, Cub Cadet .....	1
	777I22279	Graphic, Throttle Control .....	1
14	731-04663B	Console, RH .....	1
	777I22753	Graphic, Instruction .....	1
	777D10555	Graphic, Cub Cadet .....	1
15	732-04035	Spring, Compression, 1.28 x 3.125	2
16	732-04200	Spring, Switch Actuator .....	2
17	757-04041	Seat .....	1
18	783-1489C	Bracket, Seat Pivot .....	2
19	726-3046	Clip, Ratchet .....	9
20	736-0148	Washer, External Tooth, 3/8 .....	3
21	710-1260A	Screw, Hex Wash. Hd. Tapp .....	2
		5/16-18 x .75	

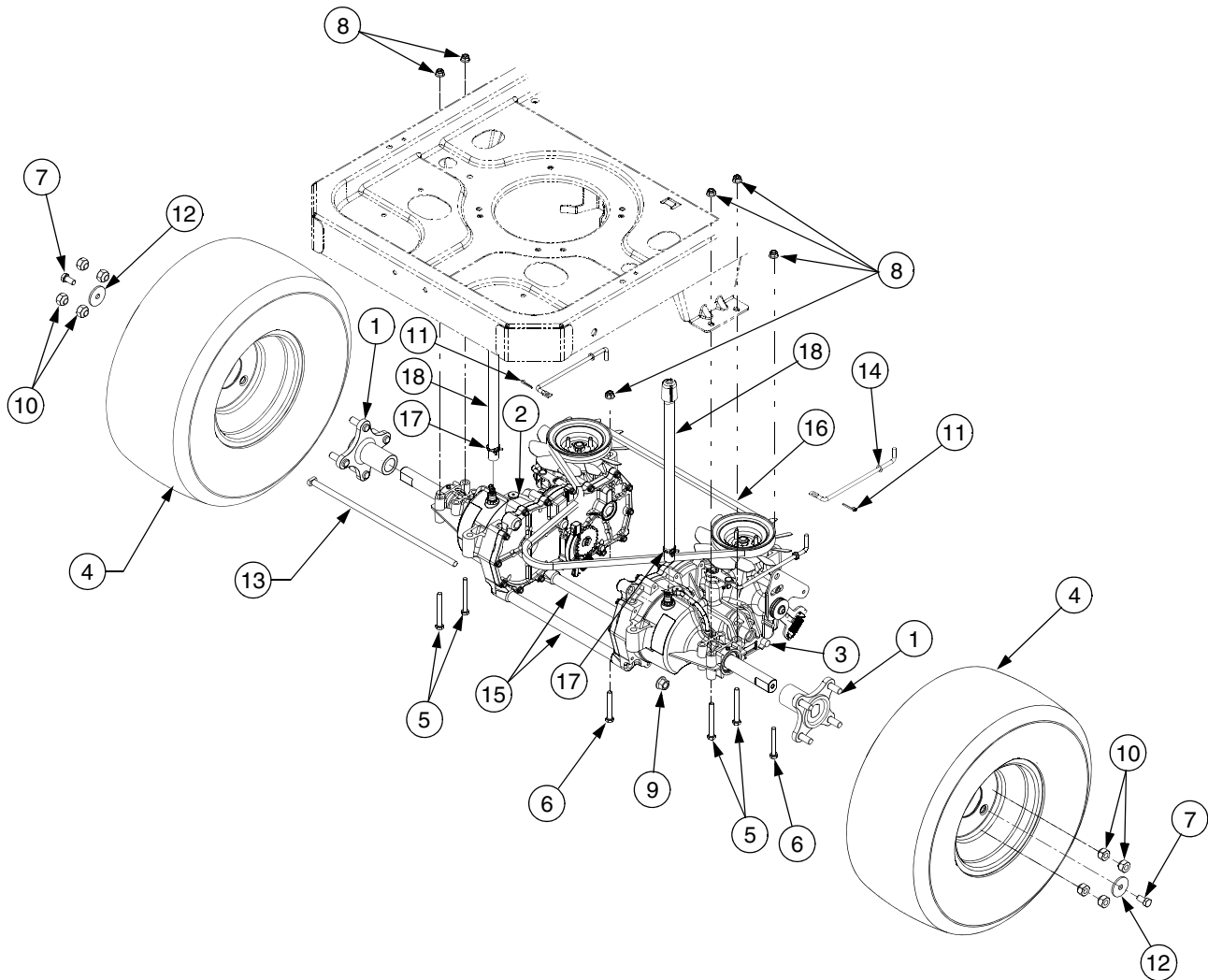
## CONTROLS AND DECK LIFT



## CONTROLS AND DECK LIFT

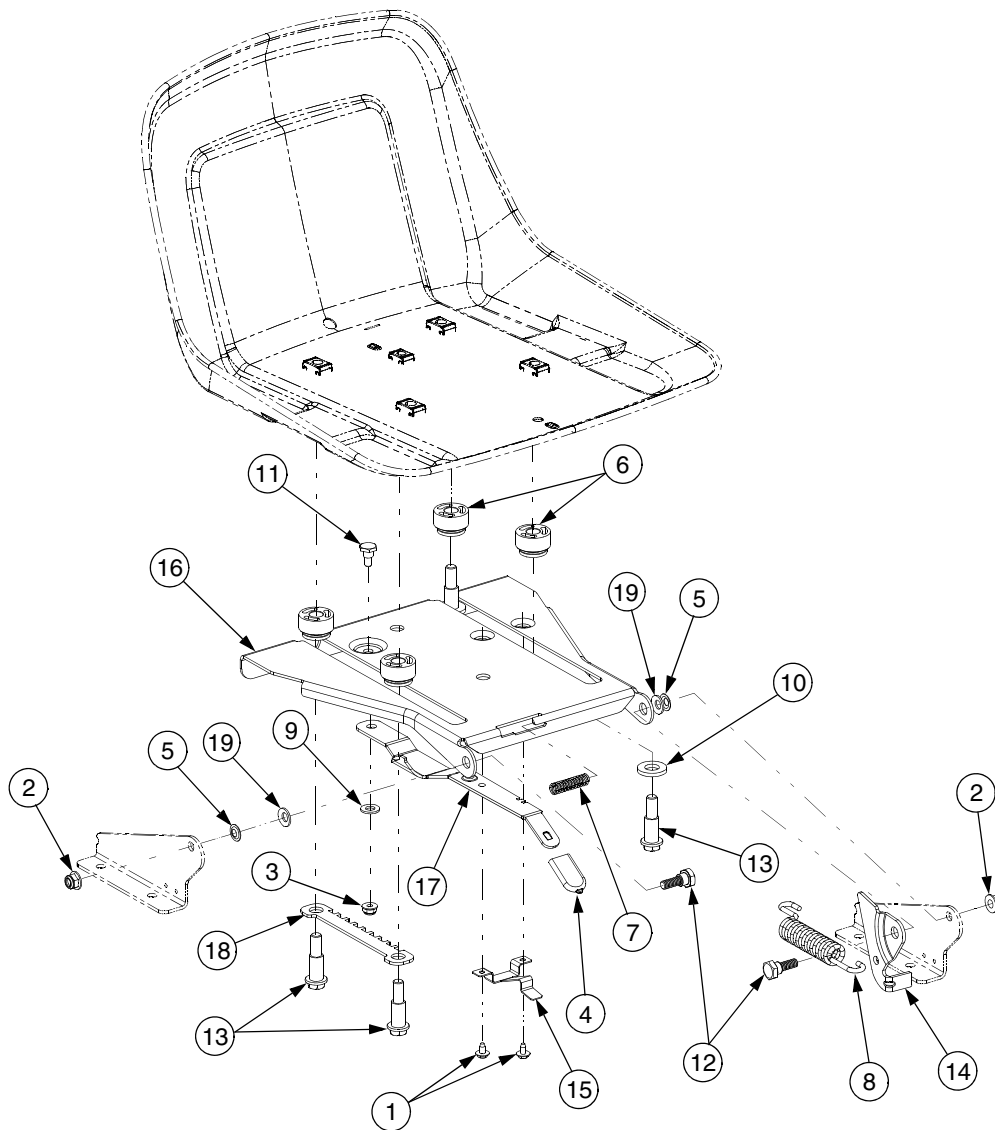
REF. NO.	PART NUMBER	DESCRIPTION	QTY.
1	603-04160B	Shaft Assembly, Deck Lift .....	1
2	603-04322	Lever, Lapbar, RH .....	1
3	603-04324	Lever, Lapbar, LH .....	1
4	947-04065	Rod, Brake .....	2
5	647-04099	Shaft, Control .....	2
6	703-05387A	Bracket, Lapbar Pivot .....	2
7	703-05396	Handle, Brake .....	1
8	703-05414A	Bracket, Front Deck Hanger .....	1
9	703-05793A	Arm, Deck Lift .....	2
10	703-05907	Plate, Lift Link .....	2
11	710-0433	Screw, Hex Lock, 1/4-20 x .62 GR5 ....	2
12	710-3005	Screw, Hex Cap, 3/8-16 x 1.25 GR5 ...	1
13	710-3008	Screw, Hex Cap, 5/16-18 x .75 GR5 ...	2
14	710-3180	Screw, Hex Cap, 5/16-18 x 1.75 GR5	2
15	711-0832	Ferrule, 3/8-24 x .375 .....	2
16	712-0206	Nut, Hex, 1/2-13 GR5 .....	4
17	712-04063	Nut, Hx Flange Insert Lck, 5/16-18 GrF	6
18	712-04064	Nut, Hx Flange Insert Lck, 1/4-20 GrF	4
19	712-04065	Nut, Hx Flange Insert Lck, 3/8-16GrF	4
20	712-0431	Nut, Hex Flange Lock, 3/8-16 GRF	5
21	714-0104	Pin, Internal Cotter .....	6
22	716-0106	E-Ring , .625 Dia. Shaft .....	4
23	720-0311	Grip, Handle .....	1
24	727-04141	Cylinder, Damper .....	2
25	731-04735	Grip, Handle .....	1
26	731-05732	Spacer, .62 x 1.0 .....	1
27	731-05882	Grip, Hand .....	2
28	732-0334	Spring, Compression .....	1
29	732-04422	Spring, Torsion .....	1
30	736-0270	Washer, Bell, .265 x .75 x .062 .....	2
31	736-0272	Washer, Flat, .51 x 1.0 x .06 .....	2
32	736-0275	Washer, Flat, .344 x .688 x .065 .....	2
33	736-3019	Washer, Flat, .531 x 1.062 x .134 HT ..	2
34	738-0143	Screw, Shoulder, .498 x .340:3/8-16	4
35	738-0296	Screw, Shoulder, .437 x .268:5/16-18	2
36	738-0507B	Screw, Shoulder, .5 x .434:3/8-16 .....	4
37	738-0572	Screw, Shoulder, .374 x 1.16:1/4-20 ...	2
38	738-0974	Screw, Shoulder, .375 x .38:1/4-20 .....	2
39	741-0225	Bearing, Hex Flange .....	6
40	741-3074	Bearing, Flange, .626 x .938 x .344 ....	2
41	747-04225A	Rod, Lapbar Control .....	2
42	747-04401A	Rod, Deck Front Hanger .....	1
43	747-04637	Rod, Deck Lift Handle .....	1
44	748-04052	Hub, Control .....	2
45	750-04676	Spacer, .385 x .63 x .75 .....	2

## REAR DRIVE AND WHEELS



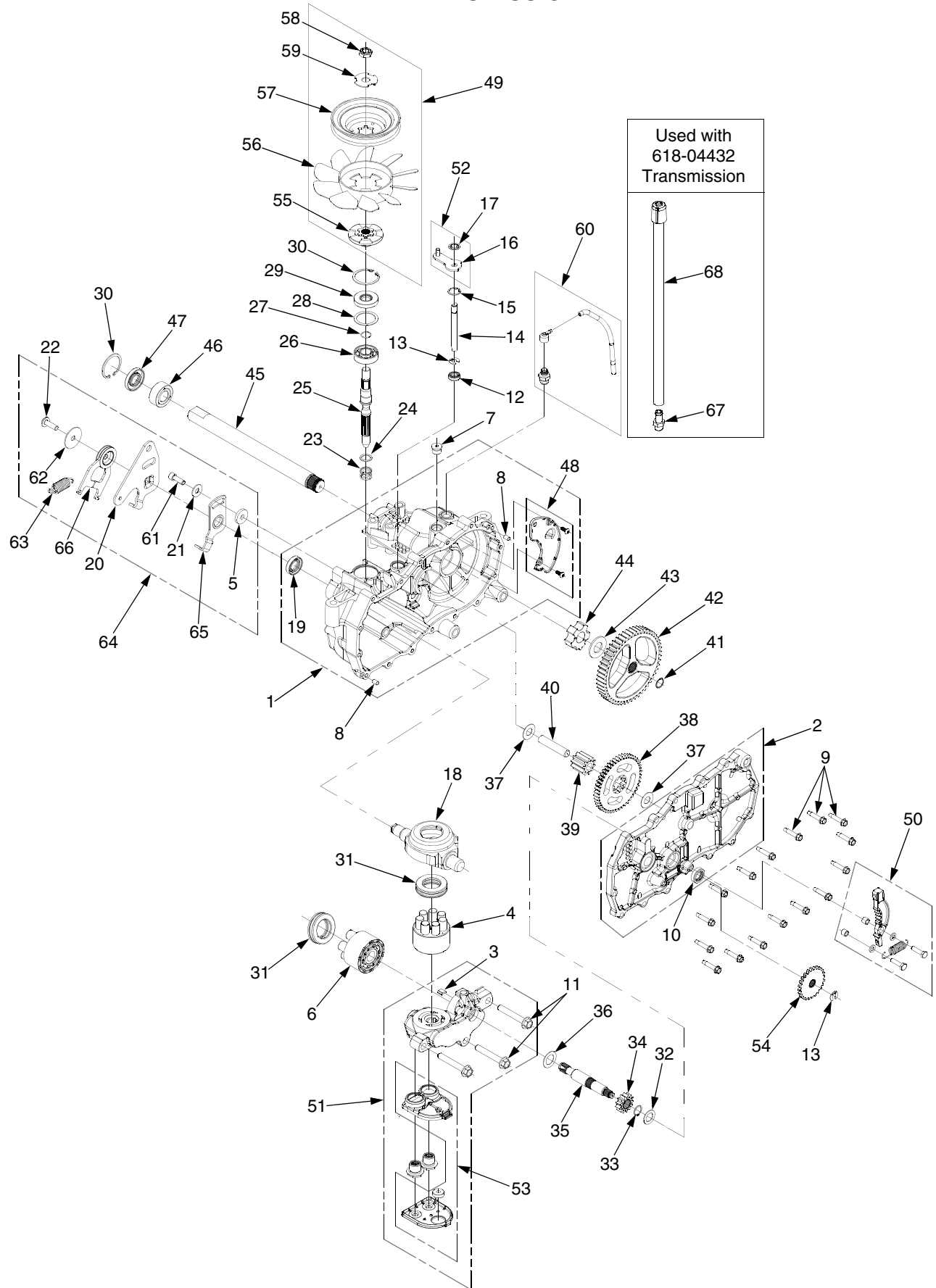
REF. NO.	PART NUMBER	DESCRIPTION	QTY.	REF. NO.	PART NUMBER	DESCRIPTION	QTY.
1	618-04317	Hub, Wheel .....	2	7	710-3119	Screw, Hex Cap Lock, ..... 3/8-16 x .75 GR5	2
	710-0852	Stud, Rib Neck, 7/16-14 x 1.6 .....	8	8	712-04063	Nut, Hx Flange Insert Lck, 5/16-18 GrF	6
2	618-04431	Transmission Assembly, LH - Before Production Date A267	1	9	712-0459	Nut, Hex Flange Lock, 7/16-20 GrB	2
	618-04431A	Transmission Assembly, LH - Production Date A267 & After - Replaces 618-04431		10	712-3050	Nut, Lug, 7/16-14 .....	8
3	618-04432	Transmission Assembly, RH - Before Production Date A267	1	11	714-0507	Pin, Cotter, 3/32 x .75 .....	2
	618-04432A	Transmission Assembly, RH - Production Date A267 & After - Replaces 618-04432		12	736-0227	Washer, Flat, .39 x 1.5 .134 .....	2
4	634-04293	Wheel Assembly, 18 x 8.5 x 8 .....	2	13	738-04192	Rod, .405 x 14.0 .....	2
	734-04246	Tire, 18 x 8.5 x 8 .....	2	14	747-04217C	Rod, Bypass .....	2
	734-0255	Valve Assembly .....	2	15	750-04561	Tube, .45 x .69 x 10.2 .....	2
	603-04173	Rim Assembly .....	2	16	754-04043	V-Belt, Type A Sec x 57.7 .....	1
5	710-0176	Screw, Hex Cap, 5/16-18 x 2.75 GR5	4	17	726-04059	Clamp, Hose - Used ONLY with 618-04431 & 618-04432 Trans.	2
6	710-0395	Screw, Hex Cap, 5/16-18 x 2.25 GR5	2	18	751-10474	Hose, Breather - Used ONLY with 618-04431 & 618-04432 Trans.	2

## SEAT ADJUSTMENT



REF. NO.	PART NUMBER	DESCRIPTION	QTY.	REF. NO.	PART NUMBER	DESCRIPTION	QTY.
1	710-1268	Screw, Hx. Wash. Hd. Tapp ..... #10-16 x .375	2	10	736-3019	Washer, Flat, .531 x 1.062 x .134 HT	2
2	712-04063	Nut, Hx Insert Flange Lck, ..... 5/16-18 GrF	2	11	738-0137A	Screw, Shoulder, .34 x .285:1/4-20	1
3	712-04064	Nut, Hx Insert Flange Lck, 1/4-20 GrF	1	12	738-0296	Screw, Shoulder, ..... .437 x .268:5/16-18	2
4	720-0309A	Grip, Seat Adjustment .....	1	13	738-0966A	Screw, Shoulder, .5 x .925:3/8-16 ..	4
5	726-0201	Nut, Speed, .3125 .....	2	14	783-0209D	Bracket, Seat Lift .....	1
6	731-04074	Spacer, Seat Adjustment .....	4	15	783-0611	Stop, Seat Adjustment .....	1
7	732-0499	Spring, Compression, .41 x 1.5 .....	1	16	783-0738D	Bracket, Seat Pivot .....	1
8	732-1184	Spring, Extension, .84 Dia. x 4.6 .....	1	17	783-0739A	Lever, Seat Adjustment .....	1
9	736-0204	Washer, Flat, .344 x .62 x .033 .....	1	18	783-0753	Index Bracket, Seat Adjustment .....	1
				19	736-0242	Washer, Belleville, .34 x .872 x .06	2

## RH TRANSMISSION

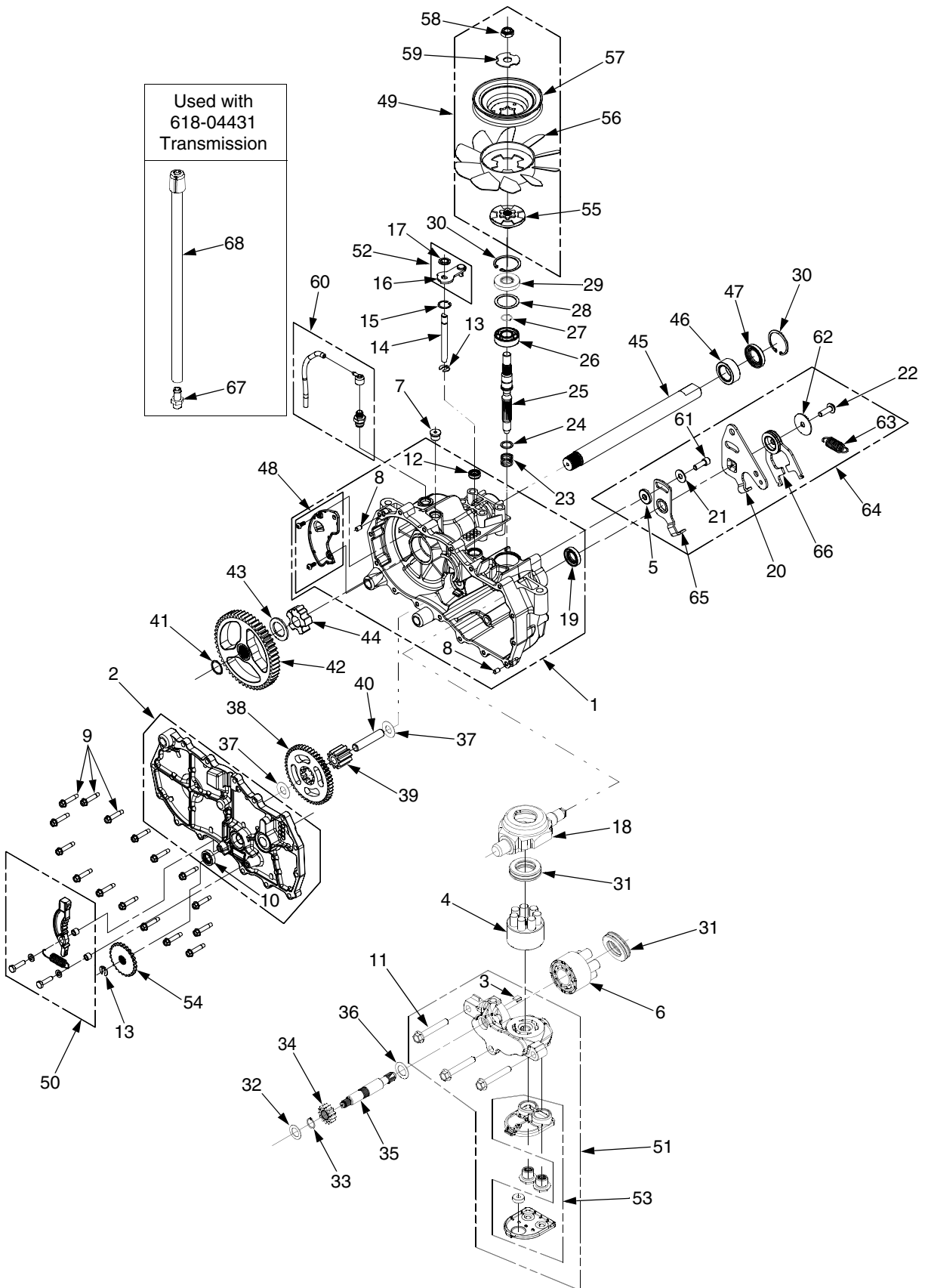




## RH TRANSMISSION

REF. NO.	PART NUMBER	DESCRIPTION	QTY.	REF. NO.	PART NUMBER	DESCRIPTION	QTY.
1	HG-70862R	Housing Assembly, Main RH	1	38	HG-51129	Gear, 10T/48T .....	1
2	HG-70863R	Side Assembly, RH .....	1	39	HG-51043	Gear, Jackshaft, 10T .....	1
3	HG-51448	Plate, Bypass .....	1	40	HG-51083	Pin, Jackshaft .....	1
4	HG-70723	Pump Block Assembly .....	1	41	HG-52531	Ring, Spiral Retaining .....	1
5	HG-52527	Spacer, .32 x 1.005 .....	1	42	HG-52541	Gear, Bull, 52T .....	1
6	HG-70331	Motor Block Assembly .....	1	43	HG-52532	Washer, 1.018 x 1.571 x .105	1
7	HG-9005110-5600	Plug, SAE #6 .....	1	44	HG-52542	Bearing, Sleeve .....	1
8	HG-9004800-2506	Pin, Stainless .....	2	45	HG-52545	Shaft, Axle, 1.0 x 11.7 .....	1
9	HG-51190	Screw, Hex Self Tapping, ..... 1/4-20 x 1.25	16	46	HG-51517	Bushing, Axle .....	1
10	HG-44761	Seal, Brake .....	1	47	HG-51518	Seal, Lip, 1.0 x 1.57 x .25 .....	1
11	HG-50016	Bolt, Hex Flange, 3/8-24 x 2.5	3	48	HG-70868R	Kit, Expansion Plate, RH .....	1
12	HG-51626	Seal, Lip, .375 x .75 x .25 .....	1	49	HG-71351	Kit, Fan-Pulley .....	1
13	HG-51628	Ring, Retaining, .375 Ext. ....	2	50	HG-71356	Kit, Brake Arm .....	1
14	HG-51625	Rod, Bypass .....	1	51	HG-71530	Kit, Center Section-Filter RH	1
15	HG-51627	Ring, Retaining, .75 Int. ....	1	52	HG-71006	Kit, Bypass Arm .....	1
16	HG-51910	Arm, Bypass .....	1	53	HG-71497	Kit, Filter .....	1
17	HG-51630	Ring, Retaining, .375 Push ...	1	54	HG-51635	Disc, Brake Cog .....	1
18	HG-51048	Swashplate, Trunnion .....	1	55	HG-52366	Hub, Pulley .....	1
19	HG-51140	Seal, Lip, 18 x 32 x 7 .....	1	56	HG-52365	Fan, 7" 10 Blade .....	1
20	HG-51841	Arm, Control RH .....	1	57	HG-52364	Pulley, 4.5 .....	1
21	HG-44130	Washer, Flat, 11/32 x 7/8 x 1/16	1	58	HG-51244	Nut, Hex Insert Lock, 1/2-20	1
22	HG-51812	Screw, 5/16-24 x 1.0 .....	1	59	HG-51523	Washer, OD Slotted .....	3
23	HG-2003014	Spring, Compression .....	1	60	HG-71510	Kit, Breather .....	1
24	HG-2003017	Washer, .591 x .787 x .04 .....	1	61	HG-51616	Screw, Hx Patch, 5/16-24 x 1.0	1
25	HG-51062	Shaft, Input .....	1	62	HG-51950	Washer, 1.5 x .34 x .062 .....	1
26	HG-50315	Bearing, Ball, 17mm x 40 x 12	1	63	HG-51833	Spring, Extension .....	1
27	HG-2000022	Ring, Wire Retaining, .561 ....	1	64	HG-71095	Kit, Return Assembly RH .....	1
28	HG-50951	Spacer .....	1	65	HG-51945	Arm, Neutral RH .....	1
29	HG-51161	Seal, Lip, 17 x 40 x 7 .....	1	66	HG-52432	Assemble, Return, Bi- Direct.	1
30	HG-50329	Ring, Retaining .....	2	67	HG-71393	Fitting, w/Cap - Used only on 618-04432 Transmissions w/ 751-10474 Breather Hose	1
31	HG-50551	Bearing, Thrust, 30 x 52 x 13	2				
32	HG-44371	Washer, Flat, 5/8 x 1.0 x .05	1	68	751-10474	Hose Assembly, Breather — Used Only with 618-04432 Transmissions Before Mfg. Date A267	1
33	HG-44145	Ring, Retaining .....	1				
34	HG-51130	Gear, Pinion, 13T .....	1				
35	HG-51632	Shaft, Motor .....	1		HG-70853	Kit, Seal .....	1
36	HG-51069	Washer, .71 x 1.16 x .04 .....	1		HG-50928	Sealant Tube, 10.3 oz .....	1
37	HG-50132	Washer, HT, .5 x 1.0 x .032 ..	2				

## LH TRANSMISSION



## LH TRANSMISSION

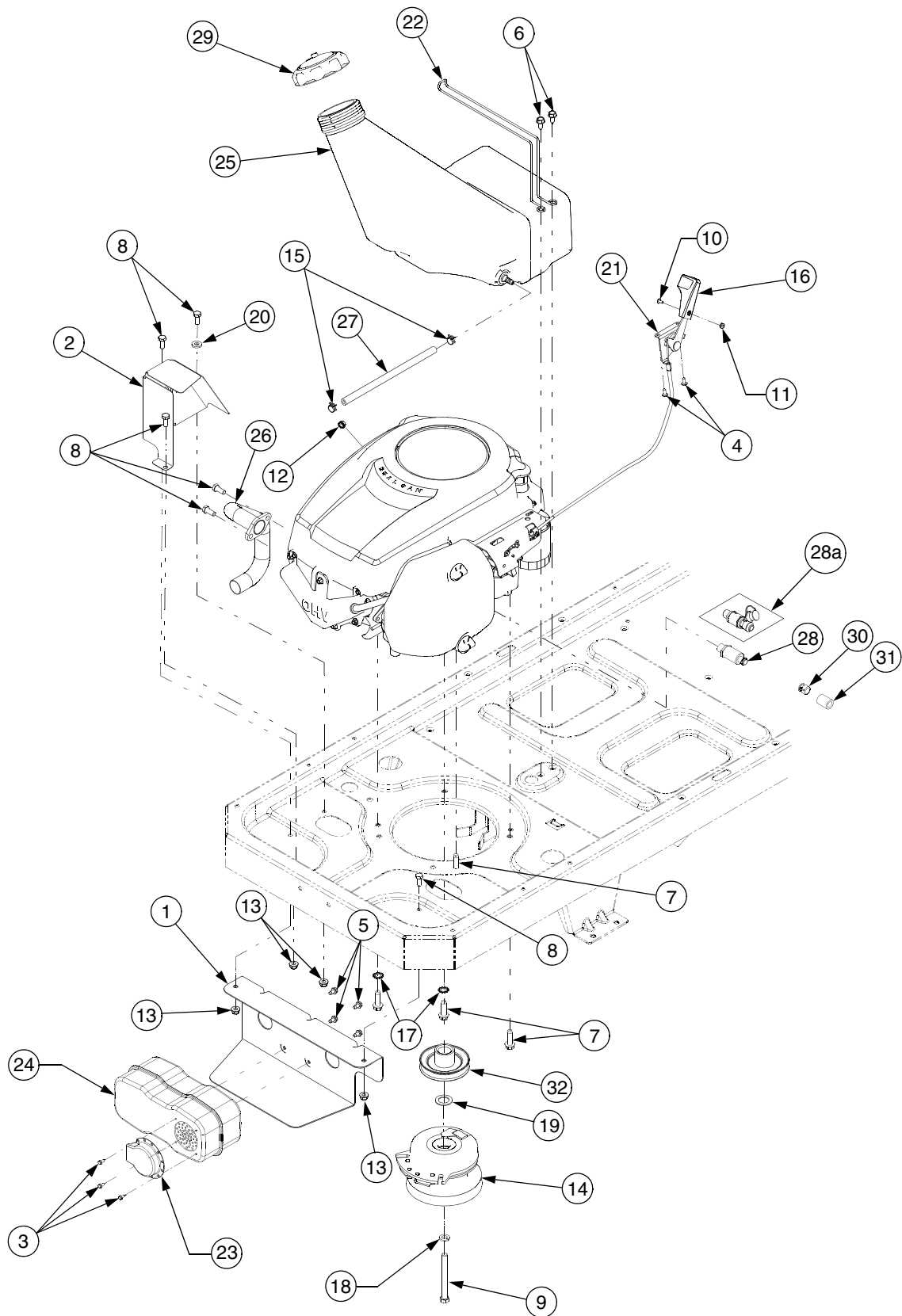
REF. NO.	PART NUMBER	DESCRIPTION	QTY.	REF. NO.	PART NUMBER	DESCRIPTION	QTY.
1	HG-70862L	Housing Assembly, Main LH .	1	38	HG-51129	Gear, 10T/48T .....	1
2	HG-70863L	Side Assembly, LH .....	1	39	HG-51043	Gear, Jackshaft, 10T .....	1
3	HG-51448	Plate, Bypass .....	1	40	HG-51083	Pin, Jackshaft .....	1
4	HG-70723	Pump Block Assembly .....	1	41	HG-52531	Ring, Spiral Retaining .....	1
5	HG-52527	Spacer, .32 x 1.005 .....	1	42	HG-52541	Gear, Bull, 52T .....	1
6	HG-70331	Motor Block Assembly .....	1	43	HG-52532	Washer, 1.018 x 1.571 x .105	1
7	HG-9005110-5600	Plug, SAE #6 .....	1	44	HG-52542	Bearing, Sleeve .....	1
8	HG-9004800-2506	Pin, Stainless .....	2	45	HG-52545	Shaft, Axle, 1.0 x 11.7 .....	1
9	HG-51190	Screw, Hex Self Tapping, ..... 1/4-20 x 1.25	16	46	HG-51517	Bushing, Axle .....	1
10	HG-44761	Seal, Brake .....	1	47	HG-51518	Seal, Lip, 1.0 x 1.57 x .25 .....	1
11	HG-50016	Bolt, Hex Flange, 3/8-24 x 2.5	3	48	HG-70868L	Kit, Expansion Plate, LH .....	1
12	HG-51626	Seal, Lip, .375 x .75 x .25 .....	1	49	HG-71351	Kit, Fan-Pulley .....	1
13	HG-51628	Ring, Retaining, .375 Ext. ....	2	50	HG-71356	Kit, Brake Arm .....	1
14	HG-51625	Rod, Bypass .....	1	51	HG-71529	Kit, Center Section-Filter LH	1
15	HG-51627	Ring, Retaining, .75 Int. ....	1	52	HG-71006	Kit, Bypass Arm .....	1
16	HG-51910	Arm, Bypass .....	1	53	HG-71497	Kit, Filter .....	1
17	HG-51630	Ring, Retaining, .375 Push ...	1	54	HG-51635	Disc, Brake Cog .....	1
18	HG-51048	Swashplate, Trunnion .....	1	55	HG-52366	Hub, Pulley .....	1
19	HG-51140	Seal, Lip, 18 x 32 x 7 .....	1	56	HG-52365	Fan, 7" 10 Blade .....	1
20	HG-51842	Arm, Control LH .....	1	57	HG-52364	Pulley, 4.5 .....	1
21	HG-44130	Washer, Flat, 11/32 x 7/8 x 1/16	1	58	HG-51244	Nut, Hex Insert Lock, 1/2-20	1
22	HG-51812	Screw, 5/16-24 x 1.0 .....	1	59	HG-51523	Washer, OD Slotted .....	3
23	HG-2003014	Spring, Compression .....	1	60	HG-71510	Kit, Breather .....	1
24	HG-2003017	Washer, .591 x .787 x .04 .....	1	61	HG-51616	Screw, Hx Patch, 5/16-24 x 1.0	1
25	HG-51062	Shaft, Input .....	1	62	HG-51950	Washer, 1.5 x .34 x .062 .....	1
26	HG-50315	Bearing, Ball, 17mm x 40 x 12	1	63	HG-51833	Spring, Extension .....	1
27	HG-2000022	Ring, Wire Retaining, .561 ....	1	64	HG-71094	Kit, Return Assembly LH .....	1
28	HG-50951	Spacer .....	1	65	HG-51946	Arm, Neutral RH .....	1
29	HG-51161	Seal, Lip, 17 x 40 x 7 .....	1	66	HG-52432	Assemble, Return, Bi- Direct.	1
30	HG-50329	Ring, Retaining .....	2	67	HG-71393	Fitting, w/Cap - Used only on 618-04431 Transmissions w/ 751-10474 Breather Hose	1
31	HG-50551	Bearing, Thrust, 30 x 52 x 13	2				
32	HG-44371	Washer, Flat, 5/8 x 1.0 x .05	1	68	751-10474	Hose Assembly, Breather — Used Only with 618-04431 Transmissions Before Mfg. Date A267	1
33	HG-44145	Ring, Retaining .....	1				
34	HG-51130	Gear, Pinion, 13T .....	1				
35	HG-51632	Shaft, Motor .....	1		HG-70853	Kit, Seal .....	1
36	HG-51069	Washer, .71 x 1.16 x .04 .....	1		HG-50928	Sealant Tube, 10.3 oz .....	1
37	HG-50132	Washer, HT, .5 x 1.0 x .032 ..	2				



## 42" MOWER DECK

REF. NO.	PART NUMBER	DESCRIPTION	QTY.
1	603-04156	Bracket, Deck Lift .....	1
2	603-04335C	Housing, Deck .....	1
	777S32599	Graphic, Danger .....	1
	777S30503	Graphic, Danger .....	1
	777I22281	Graphic, Instruction .....	1
3	618-0659	Spindle Assembly .....	1
4	703-05824A	Arm, Idler .....	1
5	710-0347	Screw, Hex Cap, 3/8-16 x 1.75 GR5	2
6	710-0528	Screw, Hex Cap, 5/16-18 x 1.25 GR5	1
7	710-0599	Screw, Hex Wash. Hd. Tapp ..... 1/4-20 x .5	5
8	710-1260A	Screw, Hex Wash. Hd. Tapp ..... 5/16-18 x .75	8
9	710-0726	Screw, Hex Wash. Hd. Tapp ..... 5/16-12 x .75	4
10	710-0751	Screw, Hex Cap, 1/4-20 x .62 GR5 ..	2
11	710-3005	Screw, Hex Cap, 3/8-16 x 1.25 GR5	1
12	710-3180	Screw, Hex Cap, 5/16-18 x 1.75 GR5	1
13	711-04069	Pin, Grass Catcher, 1/4-20 .....	1
14	712-0324	Nut, Hex Insert Lock, 1/4-20 GR8 ....	1
15	712-04064	Nut, Hx Insert Flange Lck, 1/4-20 GR5	2
16	712-04065	Nut, Hx Insert Flange Lck, 3/8-16 GrF	3
17	712-0417A	Nut, Hex Flange, 5/8-18 .....	4
18	712-0429	Nut, Hex Insert Lock, 5/16-18 GR5 ..	1
19	712-0431	Nut, Hex Flange Lock, 3/8-16 GrF ....	2
20	712-0641	Nut, Hex, M16-1.5 .....	1
21	712-3010	Nut, Hex, 5/16-18 GR5 .....	1
22	714-0470	Pin, Cotter, 1/8 x 1.25 .....	2
23	717-04074	Gear, Deck Adjustment .....	1
24	721-04041	Adapter, Water Nozzle .....	1
25	726-0233	Nut, Push, .25 x .5 .....	2
26	731-1032B	Chute Assembly, Discharge .....	1
	777S30284	Graphic, Danger .....	1
27	731-2231B	Cover, Belt .....	2
28	732-0306	Spring, Compression .....	2
29	732-0459	Spring, Extension, .94 Dia. x 6.74 ....	1
30	734-04155	Wheel, Deck Ball, 5.0 .....	2
31	736-0119	Washer, Lock, 5/16 .....	1
32	736-0225	Washer, Lock, .....	1
33	736-3072	Washer, Flat, .38 x .93 x .11 HT .....	2
34	737-04003C	Nozzle, Deck Water .....	1
35	738-04162A	Spacer, Shoulder, .884 x .19 .....	1
36	738-3056	Screw, Shoulder, .5 x 2.5:3/8-16	2
37	942-0616A	Blade, 3 in 1, 21.23 .....	2
38	747-1116	Rod, Deck Hanger .....	2
39	754-04137	Belt, V, Type A Sec x 114.1 .....	1
40	756-04129	Pulley, Idler, 4.25 Dia. .....	2
41	783-1146A	Skirt, Deck .....	1
42	737-3000	Fitting, Lube .....	2
43	738-01010A	Shaft, Spindle, 5.75 .....	1
44	741-0919	Bearing, Ball .....	4
45	748-0433	Spacer, .820 x 1.15 x .73 .....	1
46	750-1000	Spacer, .8 x 1.10 x 1.322 .....	4
47	756-1227	Pulley, Deck, 6.3 Dia .....	2

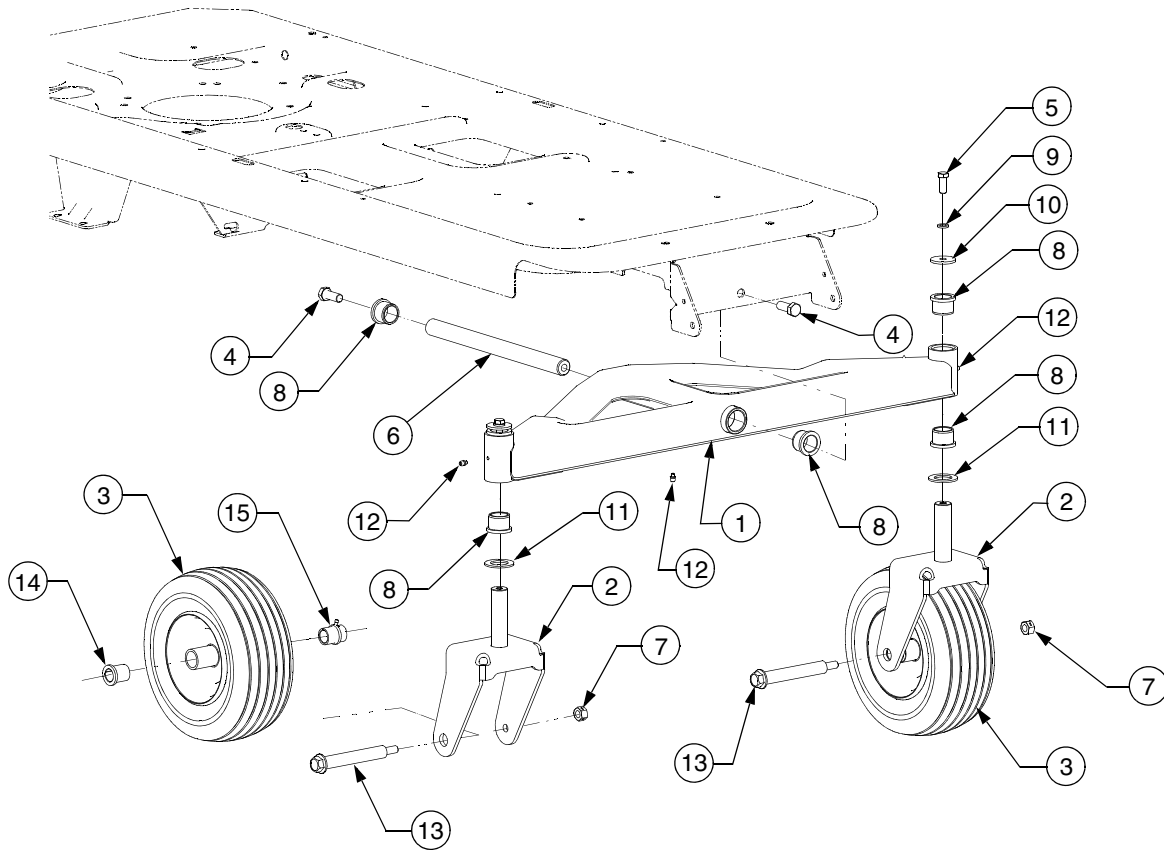
## ENGINE CONNECTIONS



## ENGINE CONNECTIONS

REF. NO.	PART NUMBER	DESCRIPTION	QTY.
1	703-05441A	Bracket, Muffler Mounting .....	1
2	703-05870	Shield, Muffler Tube Heat .....	1
3	710-0227	Screw, Hex Wash. Hd. Tapp ..... #8-18 x .5	3
4	710-04261	Screw, Hex Wash. Hd. Tapp ..... #12-16 x .5	2
5	710-0599	Screw, Hex Wash. Hd. Tapp ..... 1/4-20 x .5	4
6	710-0726	Screw, Hex Wash. Hd. Tapp ..... 5/16-12 x .75	2
7	710-1315	Screw, Hex Wash. Hd. Tapp ..... 3/8-16 x 1.25	4
8	710-3008	Screw, Hex Cap, 5/16-18 x .75 GR5	6
9	710-3157A	Scrw, Hx CapLk, 7/16-20 x 3.25 GR5	1
10	710-3217	Screw, Truss Hd. Mach. #8-32 x .375	1
11	712-0142	Nut, Hex, #8-32 .....	1
12	712-0271	Nut, Hex Sems, 1/4-20 .....	1
13	712-04063	Nut, Hx Insert Flange Lck, 5/16-18 GrF	4
14	717-04376	Clutch Assembly, Electric PTO .....	1
15	726-0205	Clamp, Hose .....	2
16	731-04914	Knob, Throttle Control .....	1
17	736-0148	Washer, Ext. Tooth Lock, 3/8 .....	2
18	736-0171	Washer, Lock, 7/16 .....	1
19	736-0277	Washer, Flat, 1.031 x 1.62 x .095 .....	1
20	736-3008	Washer, Flat, .344 x .75 x .12 .....	1
21	746-04161	Cable, Throttle, 39.0 Lg .....	1
22	747-04228A	Wire, Tank Mounting .....	1
23	751-0564B	Deflector, Muffler .....	1
24	751-0617A	Muffler .....	1
25	751-10057C	Tank, Fuel, 3.0 Gal. ....	1
26	751-10251	Pipe, Exhaust .....	1
27	751-10349-16	Hose, Fuel Low Permeation .....	16 in
28	751-3140	Valve, Oil Drain - Before Mfg. Code C097	1
28a	751-10517	Valve, Oil Drain - Mfg. Code C097 and After	1
29	751-3124D	Cap, Fuel .....	1
30	751-3142	Cap, Oil Drain Valve - Before Mfg. Code C097	1
31	751-3141	Hose, Oil Drain Extension .....	1
32	756-0978A	Pulley, Drive .....	1

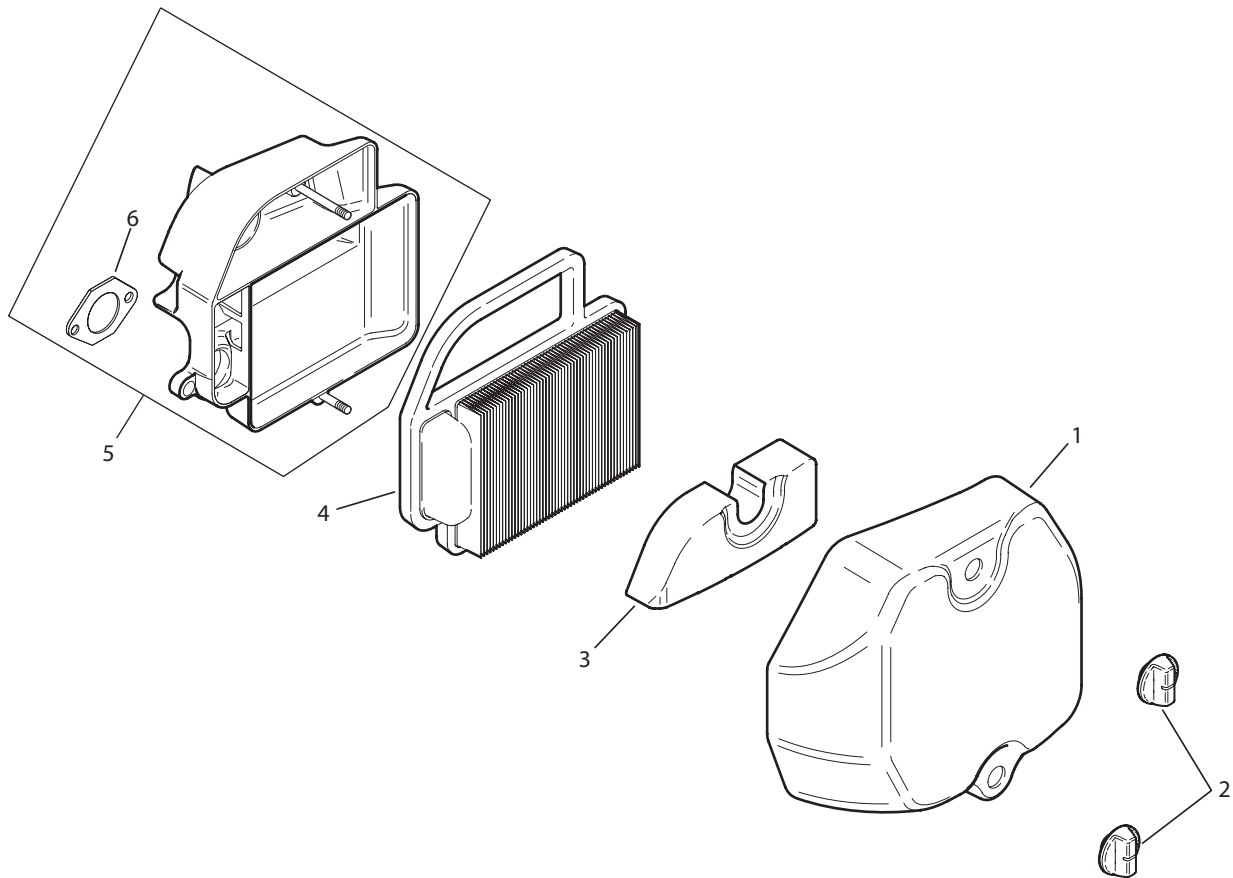
## FRONT AXLE



REF. NO.	PART NUMBER	DESCRIPTION	QTY.
1	603-04148C	Axle, Front Pivot .....	1
2	603-04308	Bracket, Castor Wheel .....	2
3	634-04212A	Wheel Assembly, 11.0 x 4.0 x 5.0 .....	2
	734-0255	Valve, Tubeless Air .....	2
4	710-04186	Screw, Hex Lock, 1/2-13 x 1.25 GR5 .....	2
5	710-0514	Screw, Hex Cap, 3/8-16 x 1.0 GR5 ...	2
6	711-04228	Shaft, Axle .....	1
7	712-3022	Nut, Hex Lock, 1/2-13 GRB .....	
8	731-05500	Bearing, Flange, 1.0 x 1.246 .....	6
9	736-0169	Washer, Lock, 3/8 .....	2
10	736-0227	Washer, Flat, .39 x 1.5 x .134 .....	2
11	736-0250	Washer, Flat, 1.0 x 1.75 x .107 .....	2
12	737-3000	Fitting, Lube, 3/16 Drive .....	3
13	738-04182A	Screw, Shoulder, .75 x 4.75:7/16-14 .....	2
14	741-0516B	Bearing, Flange, .76 x 1.0 x 1.2 .....	2
15	741-0990B	Bearing, Flange, .76 ID w/Lube Ftg. ....	2

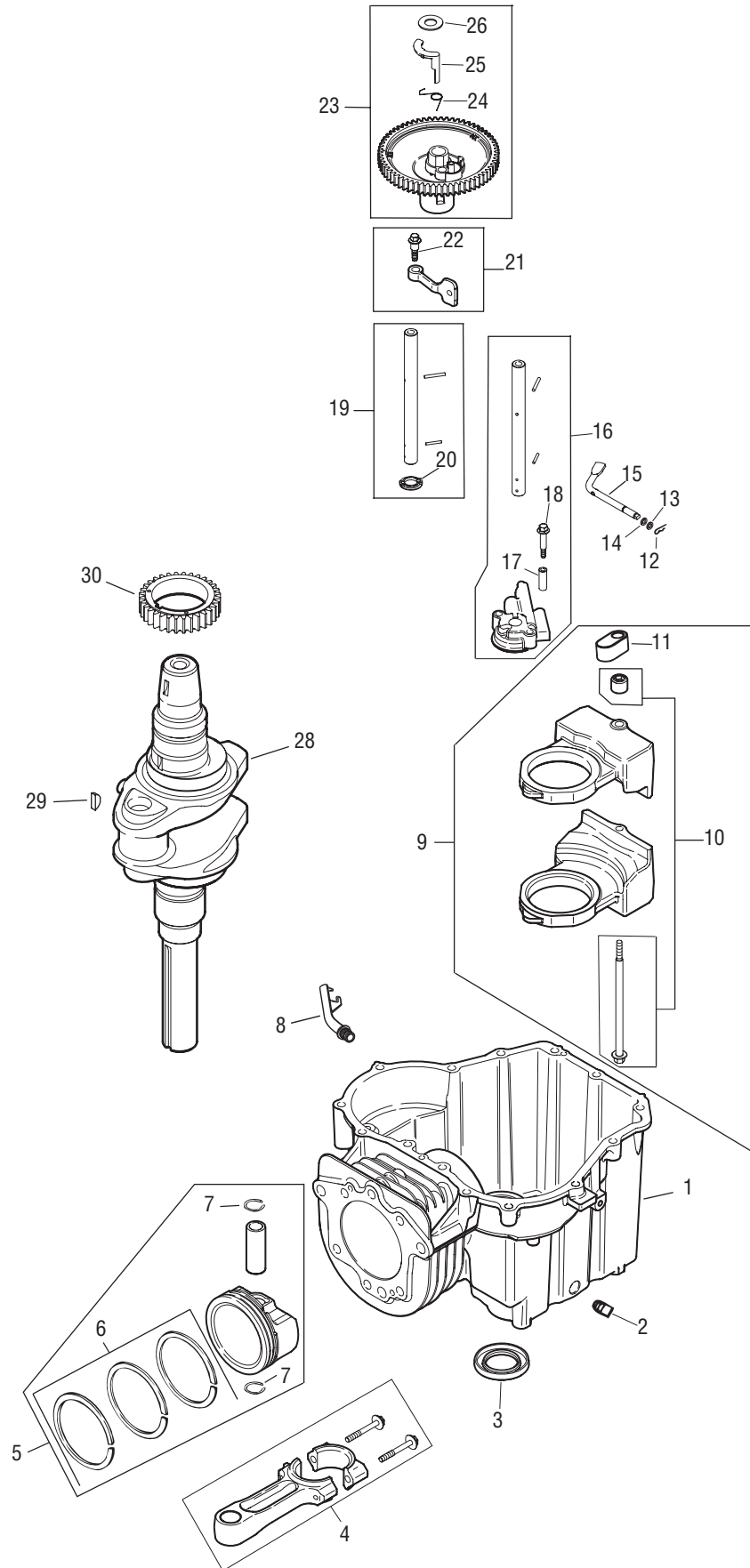


## AIR INTAKE/FILTRATION



REF. NO.	PART NUMBER	DESCRIPTION	QTY.
1	KH-20-096-04-S	Cover, air cleaner	1
2	KH-25-341-05-S	Knob, cover	2
3	KH-20-083-03-S	Element, precleaner	1
4	KH-20-083-02-S	Element, air cleaner	1
5	KH-20-094-01-S	Kit, air cleaner base (Includes 6)	1
6	KH-12-041-02	Gasket, air cleaner base	1

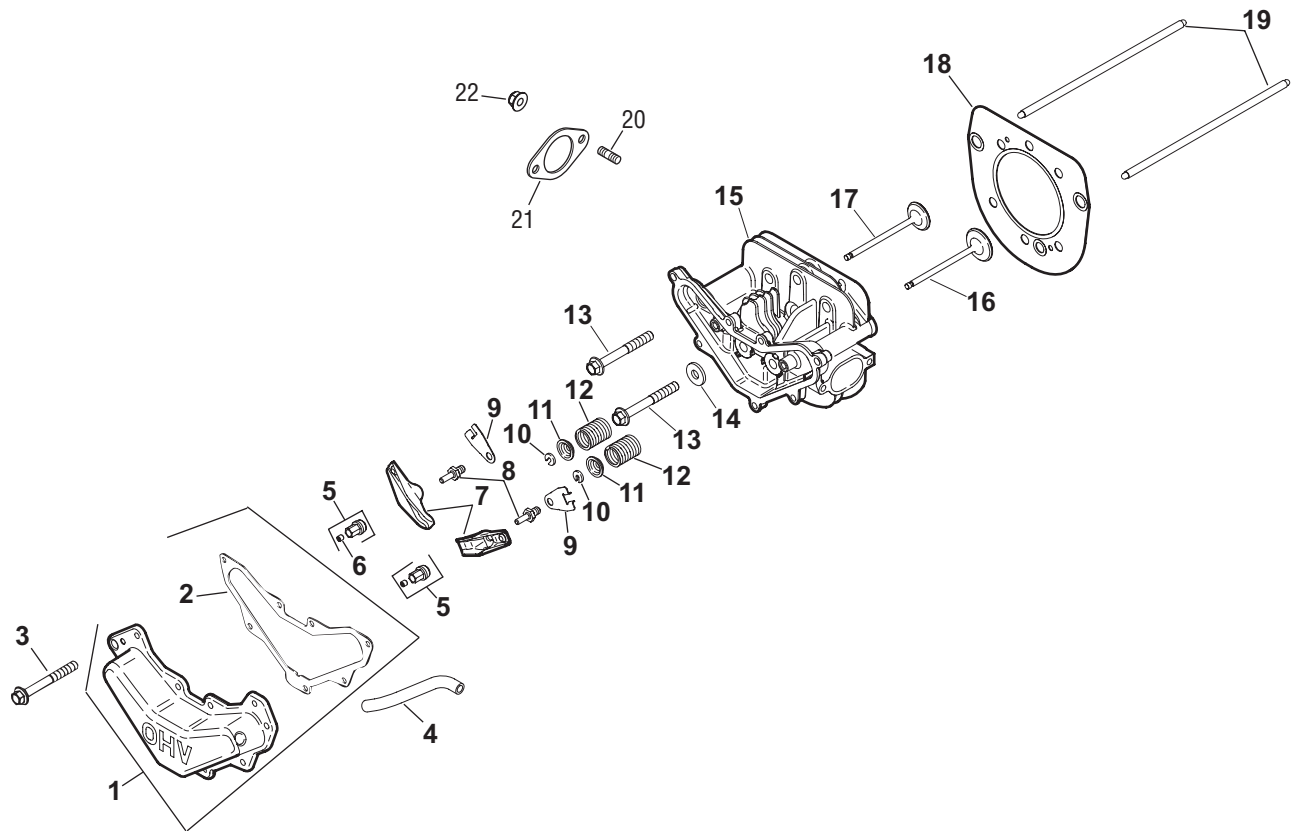
## CRANKCASE



## CRANKCASE

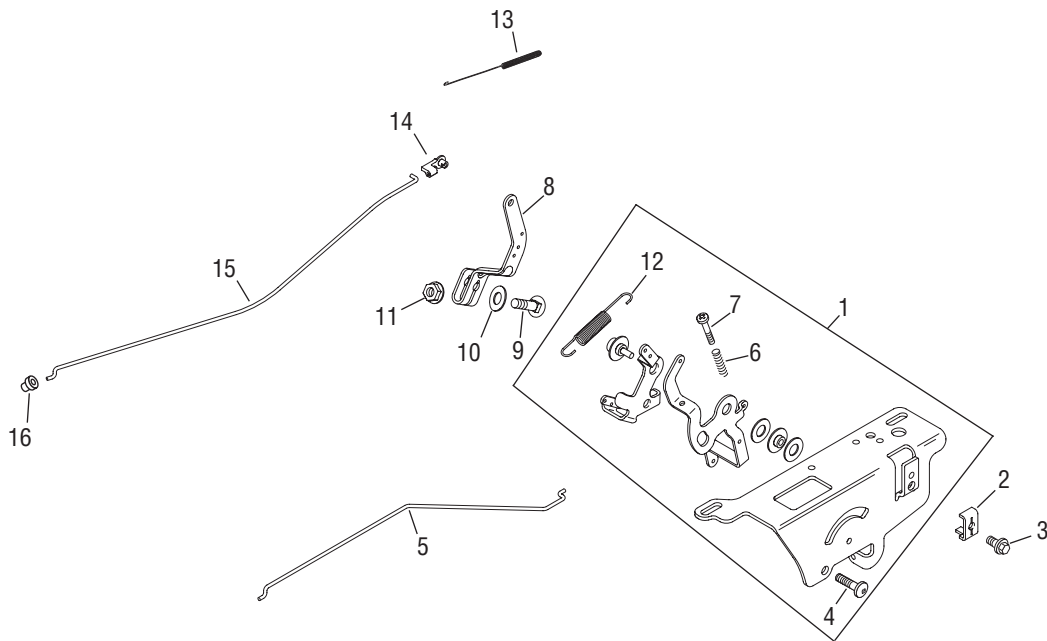
REF. NO.	PART NUMBER	DESCRIPTION	QTY.
1	—	Crankcase, Use Short Block KH-20-522-02	1
2	KH-25-139-57-S	Plug, sq. hd. pipe 3/8"	1
3	KH-20-032-01-S	Seal, oil	1
4	KH-20-067-04-S	Rod, connecting	1
5	KH-20-874-05-S	Piston w/ Ring Set (Includes 6,7)	1
6	KH-20-108-02-S	Ring Set (89 mm)	1
7	KH-20-018-04-S	Retainer, piston pin	2
8	KH-20-123-02-S	Tube, drainback	1
9	KH-20-755-04-S	Kit, balance weight (Includes 10,11)	1
10	KH-20-380-16-S	Kit, screw/guide pin	1
11	KH-20-423-02-S	Shoe, guide	1
12	KH-12-154-05	Clip, hitch pin	1
13	KH-M-631015	Washer, plain	1
14	KH-X-25-102-S	Washer, plain	1
15	KH-20-144-02-S	Shaft, governor cross	1
16	KH-20-393-02-S	Pump assembly, oil (Includes 17-19)	1
17	KH-20-112-02-S	Spacer, oil pump screw	2
18	KH-20-086-13-S	Screw, oil pump	2
19	KH-20-144-06-S	Shaft center, cam – Exhaust	1
20	KH-20-468-01-S	Washer, thrust	1
21	KH-20-090-01-S	Lever assembly, cam (2) (Includes 22)	1
22	KH-20-086-06-S	Screw, shoulder	1
23	KH-20-010-04-S	Gear assembly, cam (Includes 24-26)	2
24	KH-20-089-06-S	Spring, ACR	1
25	KH-20-044-16-S	Weight, ACR	1
26	KH-20-468-03-S	Washer, thrust – ACR	2
28	KH-20-014-20-S	Crankshaft	1
29	KH-X-42-15	Key 3/16"	1
30	KH-20-043-12-S	Gear, crankshaft	1
		<b>NOT ILLUSTRATED</b>	
	KH-20-755-05-S	Gasket Set	1

## CYLINDER HEAD



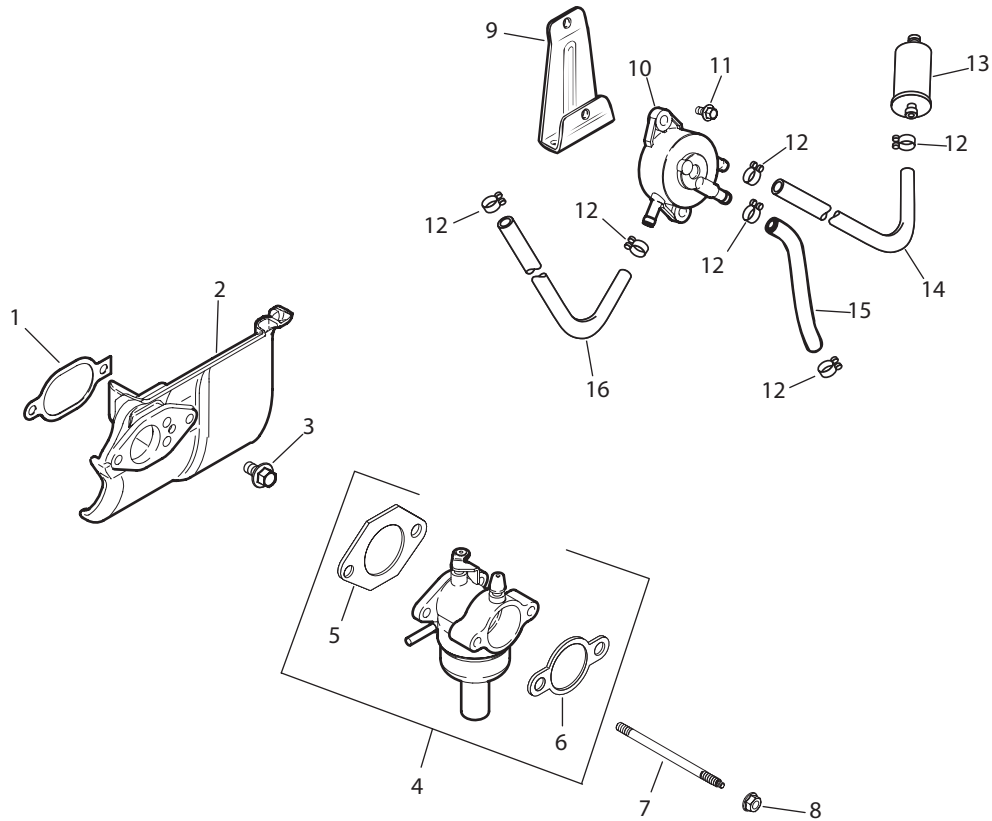
REF. NO.	PART NUMBER	DESCRIPTION	QTY.
1	KH-20-096-07-S	Kit, valve cover (Includes 2)	1
2	KH-20-041-13-S	Gasket, valve cover	1
3	KH-M-645020-S	Screw, hex. flange M6x1.0x20	7
4	KH-20-326-01-S	Hose, breather	1
5	KH-20-599-02-S	Pivot, rocker arm	2
6	KH-20-086-04-S	Screw, set	2
7	KH-20-186-01-S	Arm, rocker	2
8	KH-20-086-03-S	Stud, rocker	2
9	KH-20-146-03-S	Plate, push rod guide	2
10	KH-20-062-01-S	Lock, retainer	2
11	KH-20-173-01-S	Cap, valve spring	2
12	KH-20-089-03-S	Spring, valve	2
13	KH-20-086-02-S	Screw, hex. flange M10x1.5x37	6
14	KH-12-468-05	Washer, flat 1/2"	1
15	KH-20-318-05-S	Head, cylinder	1
16	KH-20-016-01-S	Valve, exhaust	1
17	KH-20-017-01-S	Valve, intake	1
18	KH-20-841-02-S	Kit, head gasket, (Includes 13, 14, KH-12-041-01-S, KH-12-041-02-S & KH-20-041-07-S	1
19	KH-20-411-04-S	Rod, push	2
20	KH-25-072-04	Stud, exhaust	2
21	KH-20-041-12-S	Gasket	1
22	KH-M-0841080	Nut, hex flange M8x1.25	2

## ENGINE CONTROLS



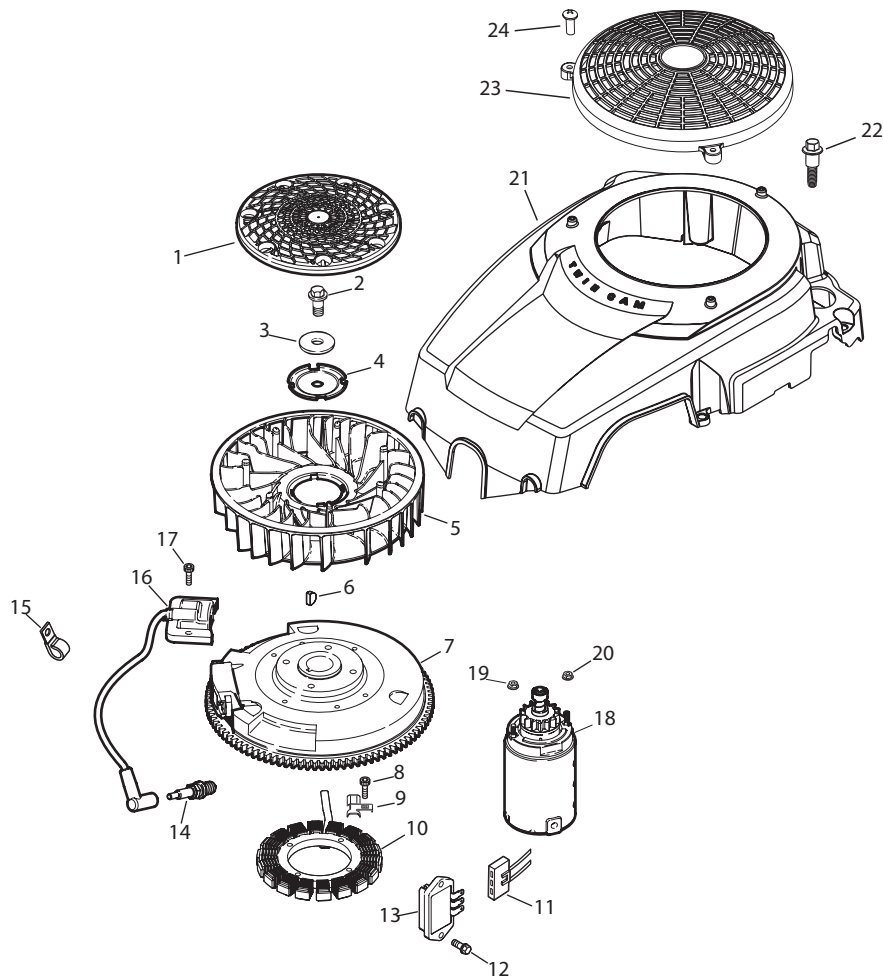
REF. NO.	PART NUMBER	DESCRIPTION	QTY.
1	KH-20-536-05-S	Control assembly, speed (Includes 4,6,7,12)	1
2	KH-12-237-01	Clamp, cable	1
3	KH-M-545016-S	Screw, hex flange thread forming M5 x 0.8 x 16	1
4	KH-M-664020-S	Screw, 6 lobed socket thread forming M6 x 1.0 x 20	2
5	KH-20-079-05-S	Linkage, choke	1
6	KH-12-089-11	Spring, speed control	2
7	KH-20-086-10-S	Screw, hex flange thread forming M4 x 0.7 x 25	2
8	KH-20-090-02-S	Lever, governor	1
9	KH-52-211-04	Bolt, round head square neck 1/4-20 x 1"	1
10	KH-X-22-11	Washer, internal tooth lock 1/4"	1
11	KH-12-100-07	Nut, hex. flange 1/4-20"	1
12	KH-20-089-11-S	Spring, governor	1
13	KH-20-089-10-S	Spring, linkage	1
14	KH-25-158 -11	Bushing, throttle linkage	1
15	KH-20-079-04-S	Linkage, throttle	1
16	KH-25-158-08	Bushing, linkage retaining	1

## FUEL SYSTEM



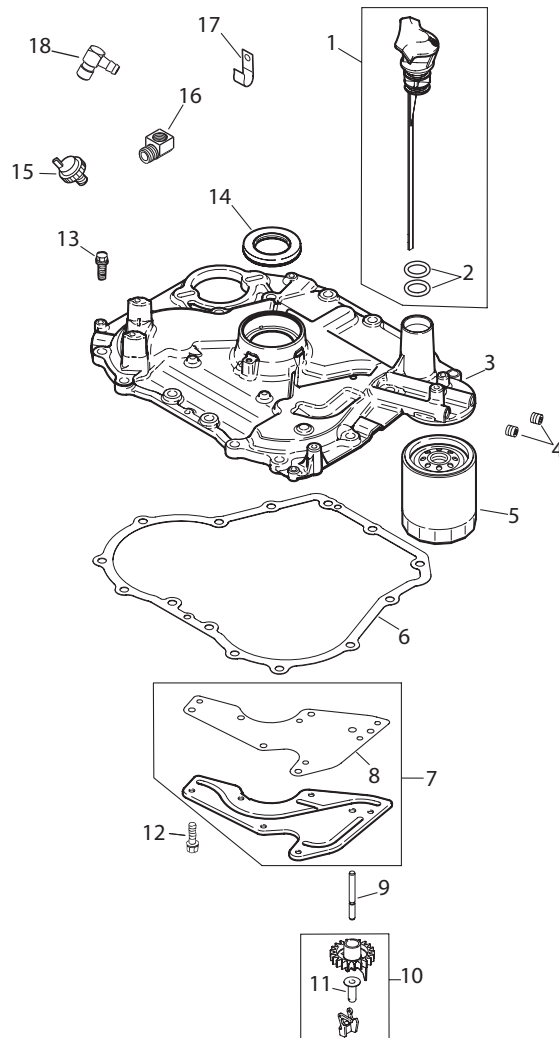
REF. NO.	PART NUMBER	DESCRIPTION	QTY.	REF. NO.	PART NUMBER	DESCRIPTION	QTY.
1	KH-20-041-07-S	Gasket, heat deflector	1	14	KH-20-353-01-S	Line, fuel 15.75" (pump to filter)	1
2	KH-20-265-05-S	Deflector, heat	1	15	KH-41-353-15-S	Line, fuel 2" (pump to carburetor)	1
3	KH-M-651020-S	Screw, hex. flange	1	16	KH-52-353-20	Line, fuel 10" (pump to fitting)	1
4	KH-20-853-16-S	Carburetor w/gaskets (Includes 5,6)	1	<b>NOT ILLUSTRATED</b>			
5	KH-12-041-01	Gasket, carburetor	1		KH-20-431-01-S	Sleeve, fuel line	1
6	KH-12-041-02	Gasket, air cleaner	1		KH-X-22-11	Washer, lock 1/4" (ground)	1
7	KH-20-072-05-S	Stud, carburetor mounting	1		KH-12-757-02	Kit, float	1
8	KH-M-641060-S	Nut, hex. flange M6x1.0	2		KH-12-757-03	Kit, carburetor repair	1
9	KH-20-126-02-S	Bracket, fuel pump mounting	1		KH-12-757-33	Kit, solenoid repair	1
10	KH-24-393-16	Pump, fuel	1		KH-12-757-37-S	Kit, bowl replacement w/gaskets	1
11	KH-M-545010	Screw, hex. flange	1		KH-12-454-03-S	Tie, wire	1
12	KH-25-237-14-S	Clamp, hose	6				
13	KH-25-050-22-S	Filter, fuel	1				

## STARTER/IGNITION-ELECTRICAL/BLOWER HOUSING



REF. NO.	PART NUMBER	DESCRIPTION	QTY.	REF. NO.	PART NUMBER	DESCRIPTION	QTY.
1	KH-20-162-02-S	Screen, grass	1	15	KH-231285-S	Clip, cable	2
2	KH-12-086-14	Screw, hex. flange M10-1.5 x 46	1	16	KH-20-584-01-S	Module, ignition	1
3	KH-12-468-03	Washer, flat	1	17	KH-M-561025-S	Screw, hex socket M5 x 0.8 x 25	2
4	KH-20-146-02-S	Plate, fan mounting	1	18	KH-20-098-06-S	Starter Ass'y, inertia drive	1
5	KH-20-157-01-S	Fan	1	19	KH-25-100-31-S	Nut, hex. serrated flange #10-24	2
6	KH-X-42-15	Key, woodruff	1	20	KH-12-100-07	Nut, hex. flange 1/4-20	1
7	KH-20-025-05-S	Flywheel	1	21	KH-20-755-11-S	Housing, blower	1
8	KH-20-086-17-S	Screw, hex. socket M5-0.8 x 25	2	22	KH-20-086-06-S	Screw, shoulder M5-0.8 x 36	4
9	KH-20-154-02-S	Clip, wire	1	23	KH-20-314-06-S	Guard, Fixed	1
10	KH-237878	Kit, stator	1	24	KH-24-086-41	Screw, Tapping	3
11	KH-236602-S	Connector, body (3 contact)	1	<b>NOT ILLUSTRATED</b>			
12	KH-M-545020-S	Screw, hex. flange M5-0.8 x 20	2		KH-20-237-01-S	Clamp. wire (clamps harness to blower housing)	1
13	KH-41-403-09	Rectifier-regulator	1		KH-20-176-01-S	Harness, wiring	1
14	759-3336	Plug, spark	1				

## OIL PAN / LUBRICATION



REF. NO.	PART NUMBER	DESCRIPTION	QTY.
1	KH-20-040-03-S	Kit, dipstick assembly (Includes 2)	1
2	KH-20-153-01-S	O-Ring, dipstick	1
3	KH-20-009-03-S	Plate assembly, closure (Includes 4,10,11)	1
4	KH-25-139-60-S	Plug, pipe	2
5	KH-12-050-01-S	Filter, oil	1
6	KH-20-041-01-S	Gasket, closure plate	1
7	KH-20-096-02-S	Kit, oil passage cover (Includes 8)	1
8	KH-20-041-02-S	Gasket, oil passage	1
9	KH-20-144-03-S	Shaft, governor gear	1
10	KH-20-310-03-S	Kit, gear and weight assembly (Includes 11)	1
11	KH-12-380-01	Pin, governor regulating	1
12	KH-M-545013-S	Screw, hex. flange M5x0.8x13	6
13	KH-M-851030-S	Screw, hex. flange M8x1.25x30	14
14	KH-20-032-01-S	Seal, oil	1
15	KH-25-099-24-S	Switch, pressure	1
16	KH-25-054-13-S	Elbow, street	1
17	KH-231285-S	Clip, cable	1
18	KH-25-155-02	Connector, 90°	1