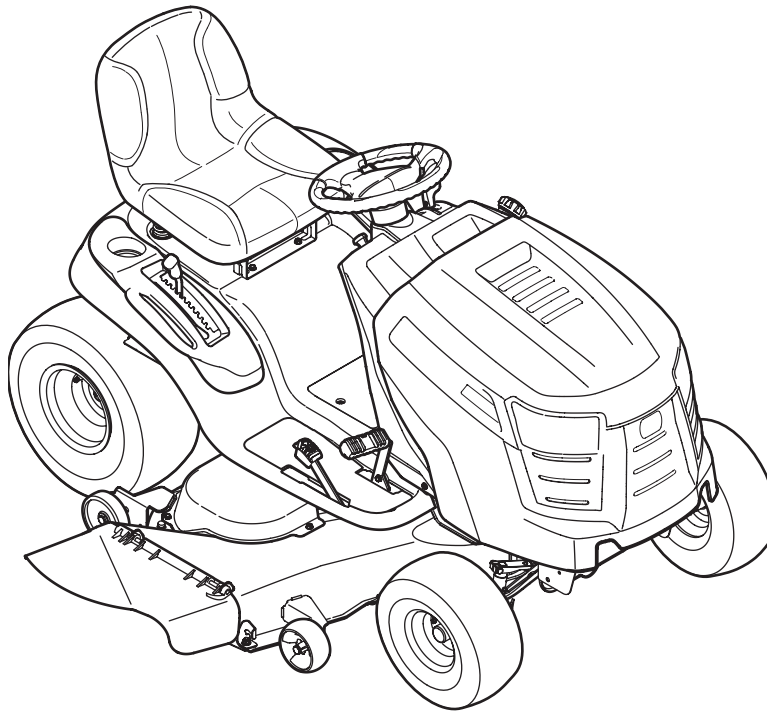

Cub Cadet[®]

ILLUSTRATED PARTS MANUAL



Hydrostatic Lawn Tractor — LTX1050/KW

CUB CADET LLC, P.O. BOX 361131 CLEVELAND, OHIO 44136-0019

To The Owner

Thank you for purchasing an Cub Cadet Lawn Tractor. It was carefully engineered to provide excellent performance when properly operated and maintained.

All information in this manual is relative to the most recent product information available at the time of printing. Please be aware that this Illustrated Part's Manual may cover a range of product specifications for various models.

Components listed and/or illustrated in this manual may not be applicable to all models. We reserve the right to change product specifications, designs and equipment without notice and without incurring obligation.

Throughout this manual, all references to *right* (RH) and *left* (LH) are observed from the operating position.

Table of Contents

Axle, Front	4	Hood	10
Battery	6	Deck Lift Handle/Linkage	8
Head Lamps	10	Labels	20
Mower Deck, 50-inch	14	Meter, Systems Indicator	10
Pedal Controls	13	Muffler	21
Dash Panel	10	PTO	6
Drive System	12	Seat	8
Electrical Schematic	22	Solenoid	6
Engine Accessories	19	Steering	4
Engine, Kawasaki FR651V	23-36	Switches, Interlock	6
Engine, Kohler SV725-3021	38-51	Throttle Control	10
Fender	8	Transmission, Hydrostatic	16
Frame	6	Wheels, Front & Rear	3
Fuel Tank	10		

Record Product Information

To ease in ordering replacement parts, please locate the model plate on the equipment and record the information in the provided area to the right. You can locate the model plate by looking beneath the seat.

MODEL NUMBER

<input type="text"/>	<input type="text"/>	<input type="text"/>	<input type="text"/>	<input type="text"/>	<input type="text"/>	<input type="text"/>	<input type="text"/>	<input type="text"/>	<input type="text"/>	<input type="text"/>
----------------------	----------------------	----------------------	----------------------	----------------------	----------------------	----------------------	----------------------	----------------------	----------------------	----------------------

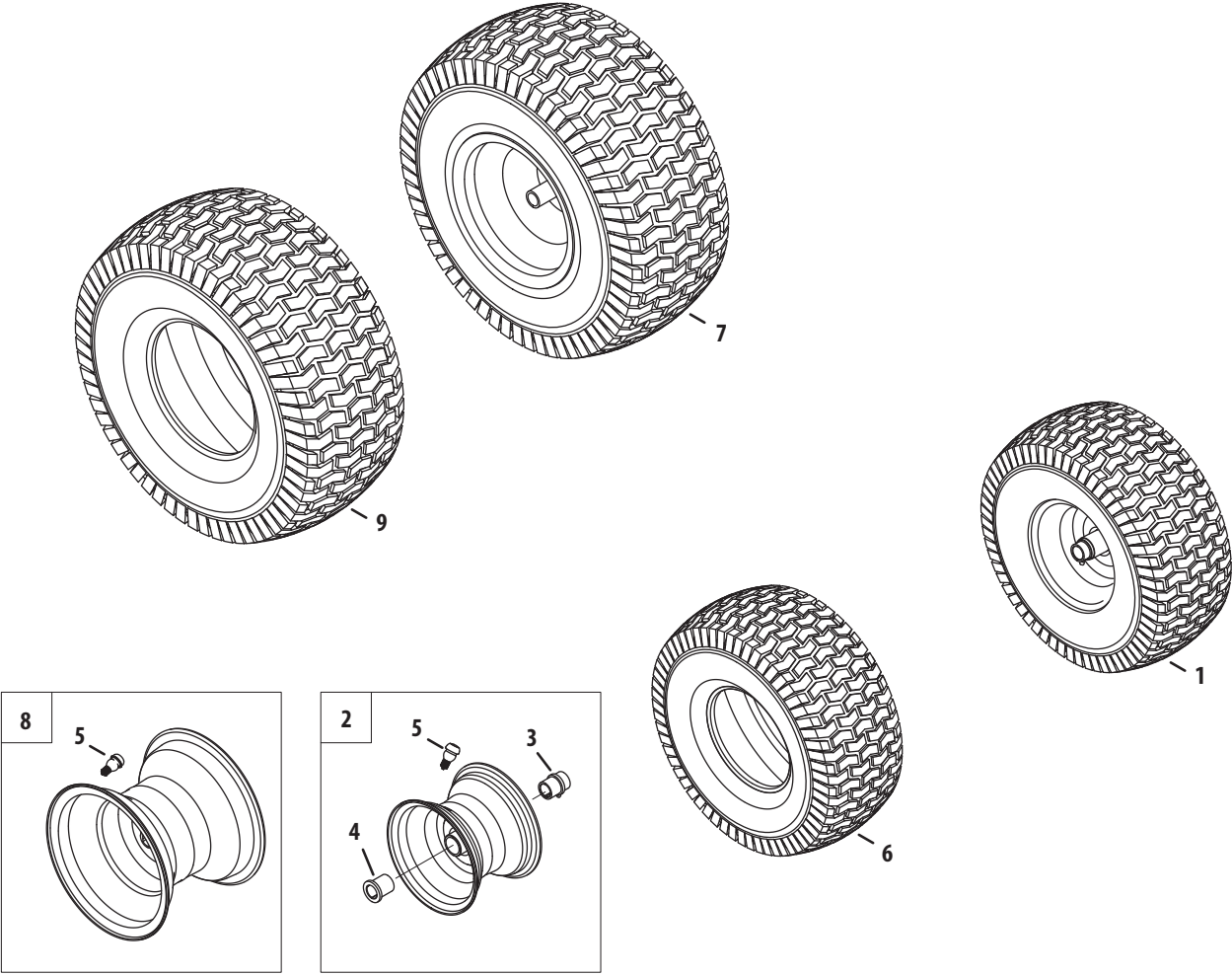
SERIAL NUMBER

<input type="text"/>	<input type="text"/>	<input type="text"/>	<input type="text"/>	<input type="text"/>	<input type="text"/>	<input type="text"/>	<input type="text"/>	<input type="text"/>	<input type="text"/>	<input type="text"/>
----------------------	----------------------	----------------------	----------------------	----------------------	----------------------	----------------------	----------------------	----------------------	----------------------	----------------------

Painted Parts

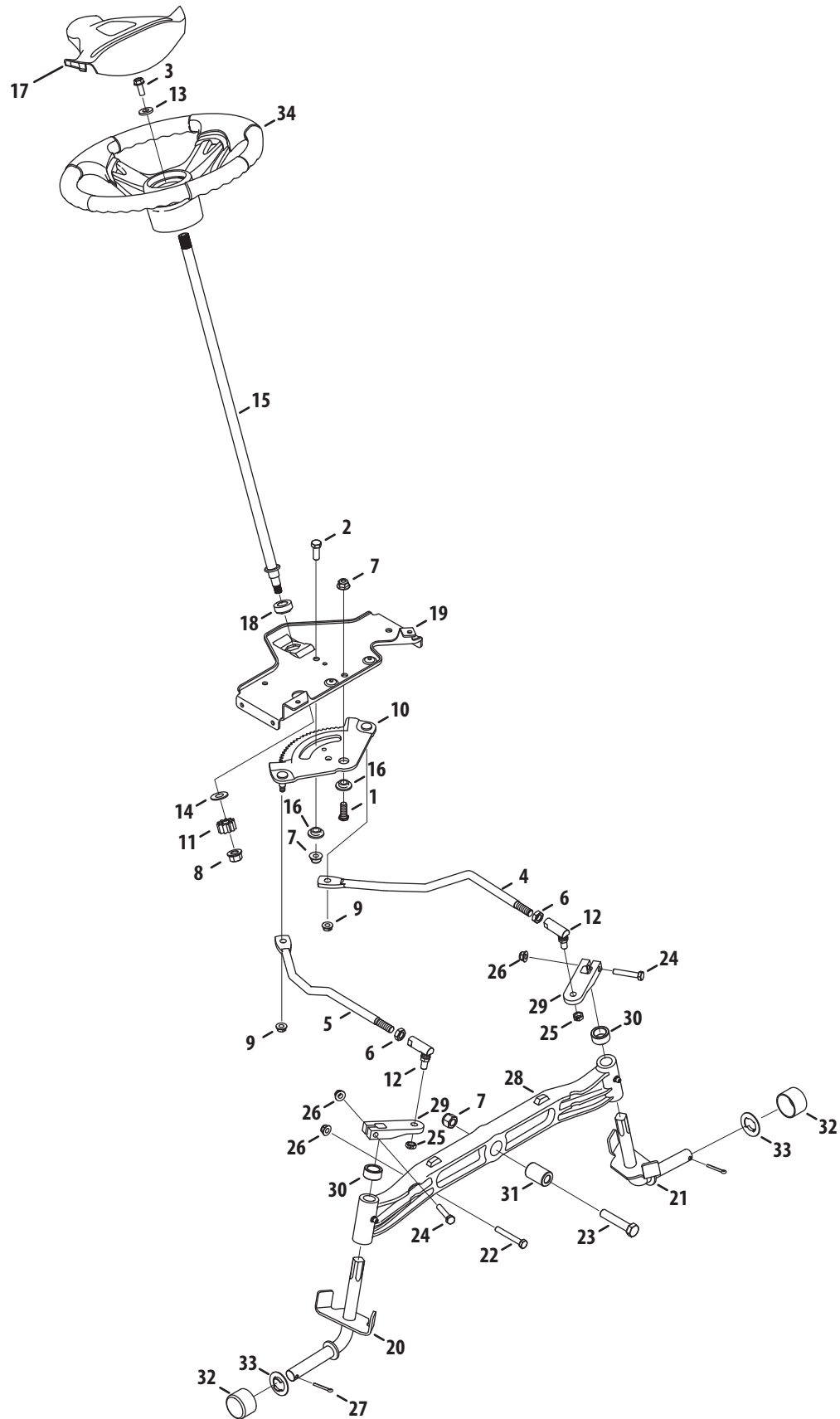
When ordering painted service parts, a four digit color suffix must be added to the part number (e.g. 783-XXXX-0637). Please refer to the table below for current color codes:

0637	Black	0685	Blue (Cub Cadet)
4021	Yellow (Cub Cadet)	0691	Black Jack (Cub Cadet Commercial)
0499	Beige (Cub Cadet)		



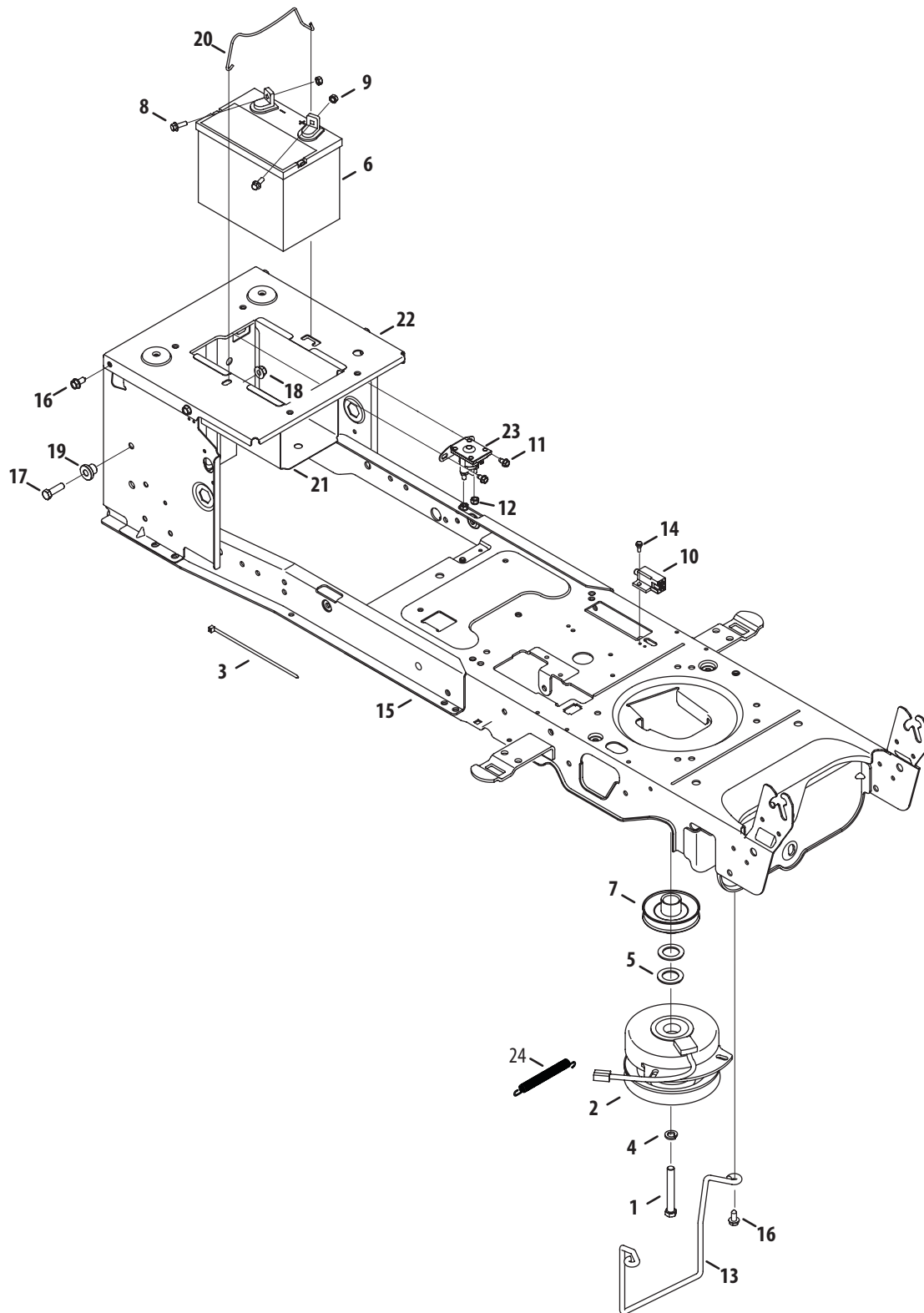
Ref.	Part Number	Description
1.	—	Wheel Ass'y, Complete, 15 x 6 x 6
2.	634-04405-0499	Rim Ass'y, 6.0 x 4.5, Plastic Bearings
3.	741-0990B	Bearing, Flange, .760 ID w/ Fitting
4.	741-0516B	Bearing, Flange, .760 x 1.00 x 1.20
5.	934-0255	Valve, Tubeless Air
6.	734-1731-0901	Tire, 15 x 6 x 6 Sq Shoulder
7.	634-0177-0931	Wheel, Complete, 20 x 10 x 8
8.	634-04369-0499	Rim Ass'y, 8.0 x 7.0 x .750 ID
9.	734-1730-0901	Tire, 20 x 8 x 8 Sq Shoulder

Steering



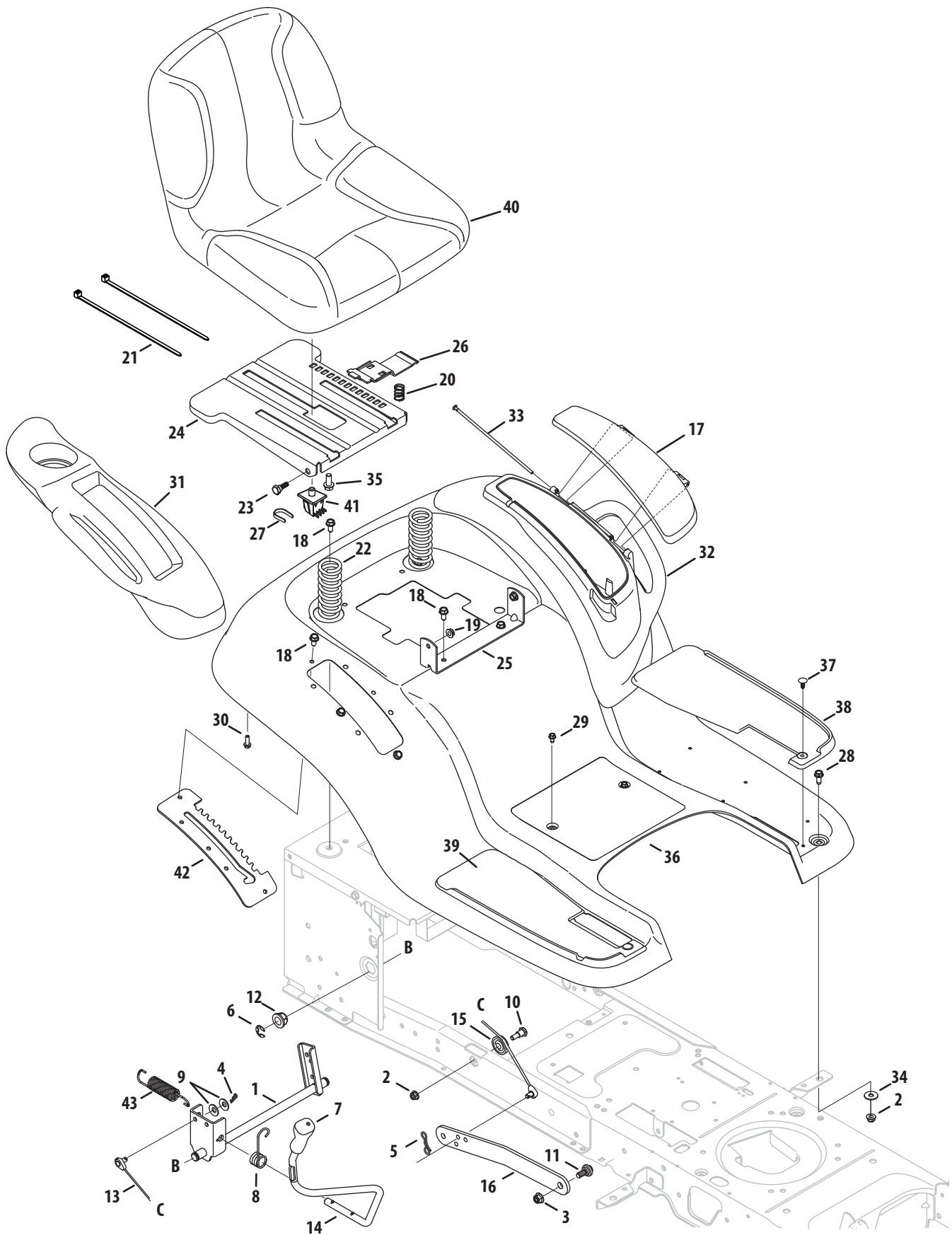
Ref.	Part Number	Description
1.	710-04095	Hex Screw, 3/8-16, 1.00, Gr5, Spec
2.	710-0514	Hex Screw, 3/8-16, 1.00, Gr5, Std
3.	710-0650	Hex Screw, 5/16-18, .875, Gr5, Lock
4.	711-04998	Link, Drag LH
5.	711-04999	Link, Drag RH
6.	912-0240	Nut, Jam, 7/16-20, Gr2
7.	712-04065	Nut, Flange Lock, 3/8-16, Grf,
8.	712-0459	Nut, Flange Lock, 7/16-20, Grb, Lock
9.	712-3004A	Nut, Flange Lock, 5/16-18, Gr5, Sd Lk
10.	717-1550F	Gear, Steering, 11/90 Ratio
11.	717-1554	Gear, Pinion, Steering
12.	923-0448A	Ball Joint, 7/16-20, Lock
13.	936-3004	Washer, Flat, .406 x .875 x .105
14.	736-3084	Washer, Flat, .51 x 1.12 x .06
15.	738-04262	Shaft, Steering, .625 OD x 25, Cub
16.	738-04363	Spacer, Shoulder, .385x 1.25 x .3025
17.	731-04532B	Cover, Steering Wheel, Cub Cadet
18.	741-04237B	Bearing, Flange, Hex 5/8 Pm
19.	783-06043	Bracket, Support, Steering
20.	638-04022	Axle Ass'y, RH .750 Dia.
21.	638-04028	Axle Ass'y, LH .750 Dia.
22.	710-0395	Hex Screw, 5/16-18, 2.25, Gr5, Std
23.	710-0859	Hex Screw, 3/8-16, 2.50, Gr5, Std
24.	710-3180	Hex Screw, 5/16-18, 1.75, Gr5, Std
25.	912-0214	Nut, Hex Lock, 3/8-24, Grb
26.	712-04063	Nut, Flange Lock, 5/16-18, Grf
27.	714-0162	Pin, Cotter, 5/32, 1.25
28.	719-04413A	Axle, Pivot Bar, Cast
29.	748-04065	Steering, Block
30.	748-04068	Spacer, .71 ID x .125 OD x .56
31.	750-05280	Spacer, .385 x 1.00 x 1.5075
32.	731-05674	Cap, Bumper
33.	736-04228A	Washer, Flat, .350 x 1.559 x .062
34.	631-04008A	Wheel, Steering, 3 Spoke, Softgrip

Frame, Electrical and PTO



Ref.	Part Number	Description
1.	710-04379A	Hex Screw, 7/16-20, 3.50, Gr5, Lock
2.	917-04174A	Clutch, Electric PTO
3.	725-0157	Cable, Tie, 3/16 X .05 X 7.4
4.	936-0171	Washer, Lock, 7/16 , Regular Duty
5.	736-0277	Washer, Flat, 1.031 X1.620 X.095
6.	925-1707D	Battery
7.	756-0978B	Engine Pulley, Electric PTO
8.	710-04666	Hex Flange Screw, 1/4-20, .75, Gr5
9.	712-0271	Nut, Sems, 1/4-20
10.	725-04363	Switch, Interlock
11.	710-0653	Screw, Self-tapping, 1/4-20, 0.375
12.	712-04064	Nut, Flange Lock, 1/4-20, Nylon
13.	747-05171	Rod, Keeper (46")
	747-05195	Rod, Keeper (50")
14.	738-04237A	Screw, Shoulder, #10-32, .50
15.	683-04469B	Frame Assembly, Lower
16.	710-04484	Screw, Self-tapping, 5/16-18, .750
17.	710-3005	Hex Screw, 3/8-16, 1.25, Gr5, Std
18.	712-04065	Nut, Flange Lock, 3/8-16, Nylon
19.	738-04058	Spacer, Shoulder, .38 X 1.0 X .70
20.	747-04121A	Rod, Battery
21.	783-0349	Tray, Battery
22.	783-06089	Bracket, Frame, Seat
23.	725-04439	Solenoid, 12V, 100 Amp, 4 term
24.	732-0814	Spr, Extn, .56 Dia X 5.52
—	925-04093	Harness Assembly, Main

Seat, Fender and Lift



Seat, Fender and Lift

Ref.	Part Number	Description
1.	683-04223	Shaft Ass'y, Lift
2.	712-04063	Nut, Flange Lock, 5/16-18, Grf
3.	712-04065	Nut, Flange Lock, 3/8-16, Grf
4.	914-0104	Pin, Cotter, .072 Dia. x 1.13
5.	714-04040	Pin, Cotter, Bow-Tie 72
6.	716-0106A	Ring, E Type, .625 Dia. Shaft
7.	720-04139A	Grip, Handle, Cub, .50 ID
8.	732-0874	Spring, Torsion
9.	736-0105	Washer, Spring, .401 x .870 x .063
10.	738-0138A	Screw, Shoulder, .437 x .470, 5/16-18
11.	938-0380	Bolt, Shoulder, .50, 3/8-16
12.	941-0225	Bearing, Hex Flange
13.	746-0968	Cable, Lift, 16.16
14.	747-04962A	Handle, Lift,
15.	756-04331	Pulley, Roller, Cable
16.	783-05546A	Link, Lift
17.	731-06584	Door, Cover, Fender
18.	710-04484	Screw, Self-tapping, 5/16-18, .750,
19.	712-3004A	Nut, Flange Lock, 5/16-18, Gr5, Sd Lk
20.	732-04563	Spring, Compr', .68 x 1.065 x .055
21.	725-0157	Cable, Tie, 3/16 x .05 x 7.4
22.	732-04849	Spring, Compr's, 1.50 x 3.90 x .200

Ref.	Part Number	Description
23.	938-0296	Screw, Shoulder, .437 x .268, 5/16-18
24.	783-06049	Bracket, Mounting, Seat
25.	783-06088	Bracket, Pivot, Seat
26.	783-06050	Lever, Seat Adjustment
27.	783-06448	Clip, Retaining, Switch
28.	710-1260A	Hex Screw, 5/16-18, .75, Gr5, Std
29.	710-0599	Screw, Self-tapping, 1/4-20, 0.500,
30.	710-0895	Screw, HL, 1/4-15, 0.750,
31.	731-06700	Cover, Fender, RH
32.	731-06676	Cover, Fender, LH
33.	747-05039	Pin, Door
34.	736-3078	Washer, Flat .344 x 1.00 x .063
35.	710-04482	Hex Flange Screw, 3/8/16, .875, Gr5
36.	783-06118	Fender, Cub Hydro
37.	726-3046	Clip, Ratchet, .250 Dia
38.	735-04137	Pad, Foot, LH
39.	735-04139	Pad, Foot, RH
40.	757-04131	Seat, High Back Cloth, Cub
41.	925-05013	Switch, Seat
42.	783-06181	Bracket, Lift
43.	732-0934	Spring, Extension, 1.15 OD x 5.99

Fuel Tank, Hood and Dash

This exploded view diagram illustrates the assembly of a boat's fuel tank, hood, and dash. The components are numbered as follows:

- 1-10:** Various fasteners and mounting hardware for the fuel tank.
- 11-16:** Fuel tank components, including the tank body, vent, and filler neck.
- 17-21:** Mounting brackets and hardware for the fuel tank.
- 22:** A long mounting screw.
- 23-26:** Dash components, including the main dash panel, side panels, and a lower panel.
- 27-32:** Various dash components and mounting hardware.
- 33-37:** Fuel tank components and mounting hardware.
- 38-44:** Fuel tank components and mounting hardware.
- 45-47:** Fuel tank components and mounting hardware.
- 48-54:** Various dash components and mounting hardware.

The diagram shows the fuel tank (11) being mounted to the hull (17) using brackets (18, 19) and screws (1, 2, 3, 4, 5, 6, 7, 8, 9, 10). The dash (23) is mounted to the hull (17) using brackets (21, 22, 24, 25, 26, 27, 28, 29, 30, 31, 32, 33, 34, 35, 36, 37, 38, 39, 40, 41, 42, 43, 44, 45, 46, 47, 48, 49, 50, 51, 52, 53, 54) and screws (1, 2, 3, 4, 5, 6, 7, 8, 9, 10, 11, 12, 13, 14, 15, 16, 17, 18, 19, 20, 21, 22, 23, 24, 25, 26, 27, 28, 29, 30, 31, 32, 33, 34, 35, 36, 37, 38, 39, 40, 41, 42, 43, 44, 45, 46, 47, 48, 49, 50, 51, 52, 53, 54).

Fuel Tank, Hood and Dash

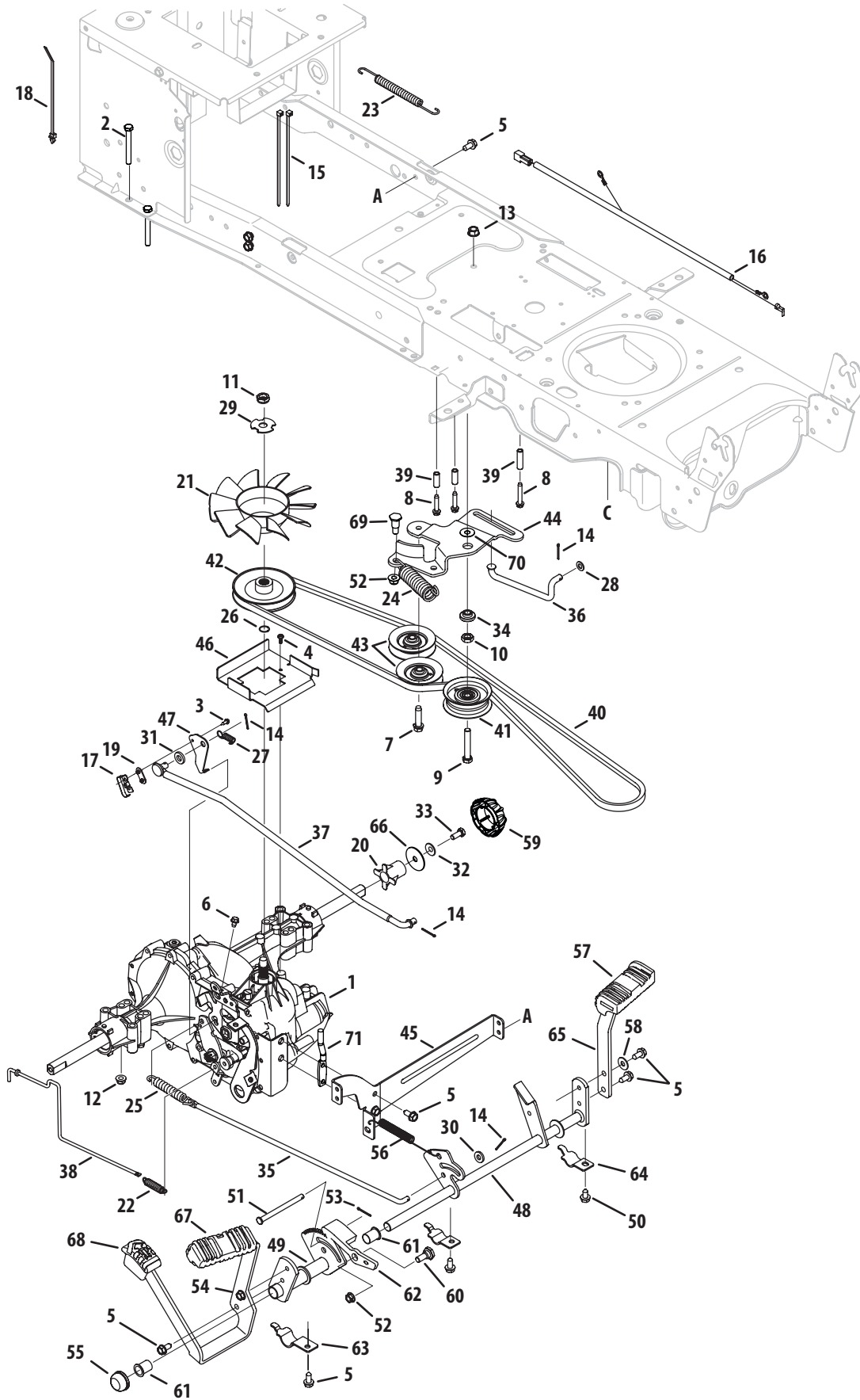
Ref.	Part Number	Description
1.	710-04484	Screw, Self-tapping, 5/16-18, .750
2.	710-0599	Screw, Self-tapping, 1/4-20, 0.500
3.	710-0895	Screw, HL, 1/4-15, 0.750
4.	710-1017	Screw, Ab, 1/4-14, 0.625,
5.	710-1611B	Screw, Self-tapping, 5/16-18, 0.750,
6.	710-1652	Screw, Self-tapping, 1/4-20 x .625
7.	710-3217	Screw, Mach, #8-32, 0.375
8.	712-0142	Nut, Hex, #8-32
9.	714-04040	Pin, Cotter, Bow-Tie 72
10.	726-3046	Clip, Ratchet, .250 Dia
11.	731-05447A	Lever, Dash, Cruise/Brake
12.	731-06593	Knob, Throttle
13.	931-06554	Dash Panel, A-Style, Elect PTO
14.	735-0271A	Bumper, .62 Dia X .3
15.	735-04076	Net
16.	747-05009B	Rod, Control, Latch Cub
17.	747-1196	Rod, Lever, Bent
18.	783-06098	Support, Dash, Plate LH
19.	783-06099	Support, Dash, Plate RH
20.	925-1649	Socket, Lamp
21.	710-05108	Screw, 1/4 Dia, .750
22.	926-0154	Tie, Cable, Push Mount 7.5 Lg
23.	931-04322	Grille Ass'y (Incl. 26, 27, 32 & 33)
24.	931-06542A	Scoop, Hood, RH A-Style
25.	931-06543A	Scoop, Hood, LH A-Style
26.	931-06558	Lens, Hood, RH A-Style
27.	931-06559	Lens, Hood, LH A-Style
28.	931-06634	Hood, A-Style
29.	936-0222	Washer, Lock, 1/4, External
30.	936-3020	Washer, Flat, .271, .630, .065

Ref.	Part Number	Description
31.	738-04091A	Screw, Shoulder, .43x.29, 5/16-18
32.	777X44055	Reflector, Cub A Style, LH
33.	777X44056	Reflector, Cub A Style, RH
34.	783-06114	Bracket, Pivot, Hood A-Style
35.	751-10879B	Tank, Fuel, 3.75 Gal.
	751-10906A	Tank, Fuel, 3.30 Gal. (CA)
36.	710-1652	Screw, Self-tapping, 1/4-20, .625
	710-0642	Screw, Self-tapping, 1/4-20, .75 (CA)
37.	747-05040A	Rod, Support, Fuel Tank
38.	951-10589	Canister, Carbon, 5 Gallon (CA)
39.	951-10590	Filter, Vent, Canister (CA)
40.	951-10610	Bracket, Adapter, Canister (CA)
41.	751-10749-14	Hose, Fuel, Low Perm, 3/16 Wht (CA)
42.	751-10750-28	Hose, Fuel, Low Perm, 7/32 Yel (CA)
43.	751-12118	Valve, Rollover Grommet (CA)
44.	735-04081	Grommet, Rubber, 23.0 ID (CA)
45.	751-0603A	Cap, Fuel
	951-10947	Cap, Fuel (CA)
	951-12179	Cap, Fuel *
46.	925-2054A	Key, Ignition
47.	735-04170	Gasket, Fuel Tank
48.	925-0963	Lamp, 12v
49.	731-1999	Plug, Choke
	746-04120†	Control, Choke, 40.5 x 2, Yellow
50.	925-04227B	Module Switch, Ignition
51.	946-04556	Cable, Throttle/Choke, 38"
	946-1100†	Cable, Throttle, 38"
52.	925-04022B	Meter, Indicator
53.	725-04258	Switch, Electric PTO, Yellow
54.	731-06936†	Plenum, A-Style

† If Equipped

* Models built after Jan. 1, 2011.

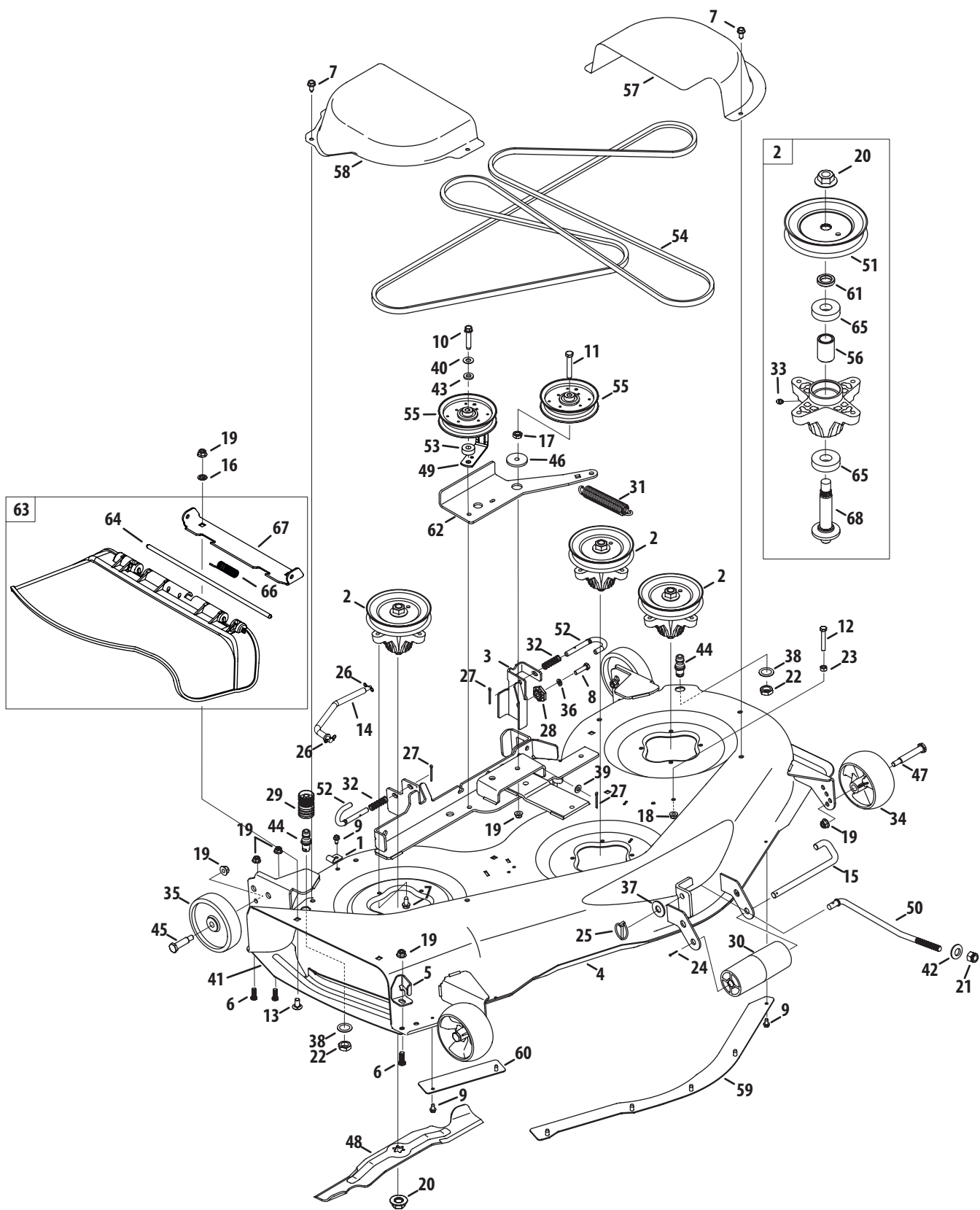
Drive System



Ref.	Part Number	Description
1.	918-0319	Transmission, Hydro-Gear 0510
2.	710-0176	Hex Screw, 5/16-18, 2.75, Gr5, Std
3.	710-0227	Screw, #8-18, 0.500,
4.	710-0351	Screw, #10-16, 0.500
5.	710-04484	Screw, Self-tapping, 5/16-18, .750
6.	710-0653	Screw, Self-tapping, 1/4-20, 0.375
7.	710-1007	Screw, Self-tapping, 3/8-16, 1.500
8.	710-1325	Screw, Self-tapping, 1/4-20, 1.625
9.	710-3011	Hex Screw, 3/8-16, 2.25, Gr5
10.	912-0240	Nut, Jam, 7/16-20, Gr2
11.	912-0346	Nut, Jam Lock, 1/2-20, Gr5, Nylon
12.	712-04063	Nut, Flange Lock, 5/16-18, Nylon
13.	912-0431	Nut, Flange Lock, 3/8-16
14.	914-0111	Pin, Cotter, 3/32, 1.0
15.	725-0157	Cable, Tie, 3/16 x .05 x 7.4
16.	725-04791A	Jumper Harness, Ground & Reverse
17.	725-1644	Switch, Spring, Short
18.	926-0154	Tie, Cable, Push Mount 7.5
19.	926-0320	Plate, Insulator Nut
20.	731-05299A	Sleeve, .765 Id x 1.500
21.	731-06098	Fan, Hydro
22.	932-0209	Spring, Extension, .48 Od x 2.03
23.	732-04606	Spring, Extension, .500 Dia x 12.6
24.	732-04624	Spring, Extension, 1.00 Dia x 4.75
25.	732-0716D	Spring, Extension, .59 Od x 4.00
26.	732-0729	Ring, Wire
27.	732-3118	Spring, Extension, .375 Od x 1.44
28.	936-0264	Washer, Flat, .330 x .630 x .0635
29.	736-04263	Washer, Lock, Transmission Hydro
30.	936-3008	Washer, Flat, .344 x .750 x .120
31.	736-3010	Washer, Flat, .407x.812x.135, Ht
32.	736-0242	Washer, Bell, .340 x .872 x .060
33.	710-0627	Hex Screw, 5/16-24, .750, Gr5, Lock
34.	738-04420	Spacer, Shoulder, 1.375 x .380 x .183
35.	747-04139	Rod, Brake, LT Hydro
36.	747-04957A	Rod, Transmission, Bypass

Ref.	Part Number	Description
37.	747-04979	Rod, Control, Hydro
38.	747-04991	Rod, Hydro Bypass
39.	750-04456	Spacer, .260 x .372 x 1.420
40.	954-04207	Belt, V-Type
41.	756-04224	Pulley, Idler, Flat 2.75 OD
42.	756-04308	Pulley, Input, 4.13 Dia
43.	756-04325	Pulley, Idler, V-Type x 3.06
44.	783-06027A	Bracket, Idler, Center Double
45.	783-06133	Bracket, Mount, Hydro
46.	783-06260	Bracket, Support, Belt Disengage
47.	783-1019B	Bracket, Actuator, Switch
48.	647-04152B	Control Assembly, Brake
49.	683-04537	Bracket Assembly, Pedal, Hydro
50.	710-0604A	Screw, Self-tapping, 5/16-18, 0.625,
51.	711-05068	Pin, Clevis, 5/16 x 3.985
52.	712-04065	Nut, Flange Lock, 3/8-16, Nylon
53.	714-04040	Pin, Cotter, Bow-Tie 72
54.	783-06059	Bracket, Pedal, Hydro
55.	726-0214	Cap, Push 5/8
56.	732-04587	Spring, Extension, .63 Dia x 4.95
57.	735-04136	Pad, Pedal, Brake
58.	736-0242	Washer, Bell, .340 x .872 x .060
59.	731-2290A	Cap, Hub
60.	938-0380	Bolt, Shoulder, .500 x .270, 3/8-16
61.	741-0495	Bearing, Flange, .630 x .695 x .60
62.	748-04203	Latch, Cruise
63.	783-05914	Bracket, Support, Pedal Strap
64.	783-05940	Bracket, Support, Pedal Strap 5/8
65.	783-06103A	Bracket, Pedal, Brake
66.	736-0430	Washer, Flat, .350 x 1.59 x .062
67.	735-04118A	Pad, Pedal, Forward
68.	735-04135	Pad, Pedal, Reverse
69.	738-0430	Scr, Shldr, .50 x .685 3/8-16
70.	936-0344	Washer, Flat, .385 x 1.0 x .030
71.	747-05444	Belt Keeper Rod

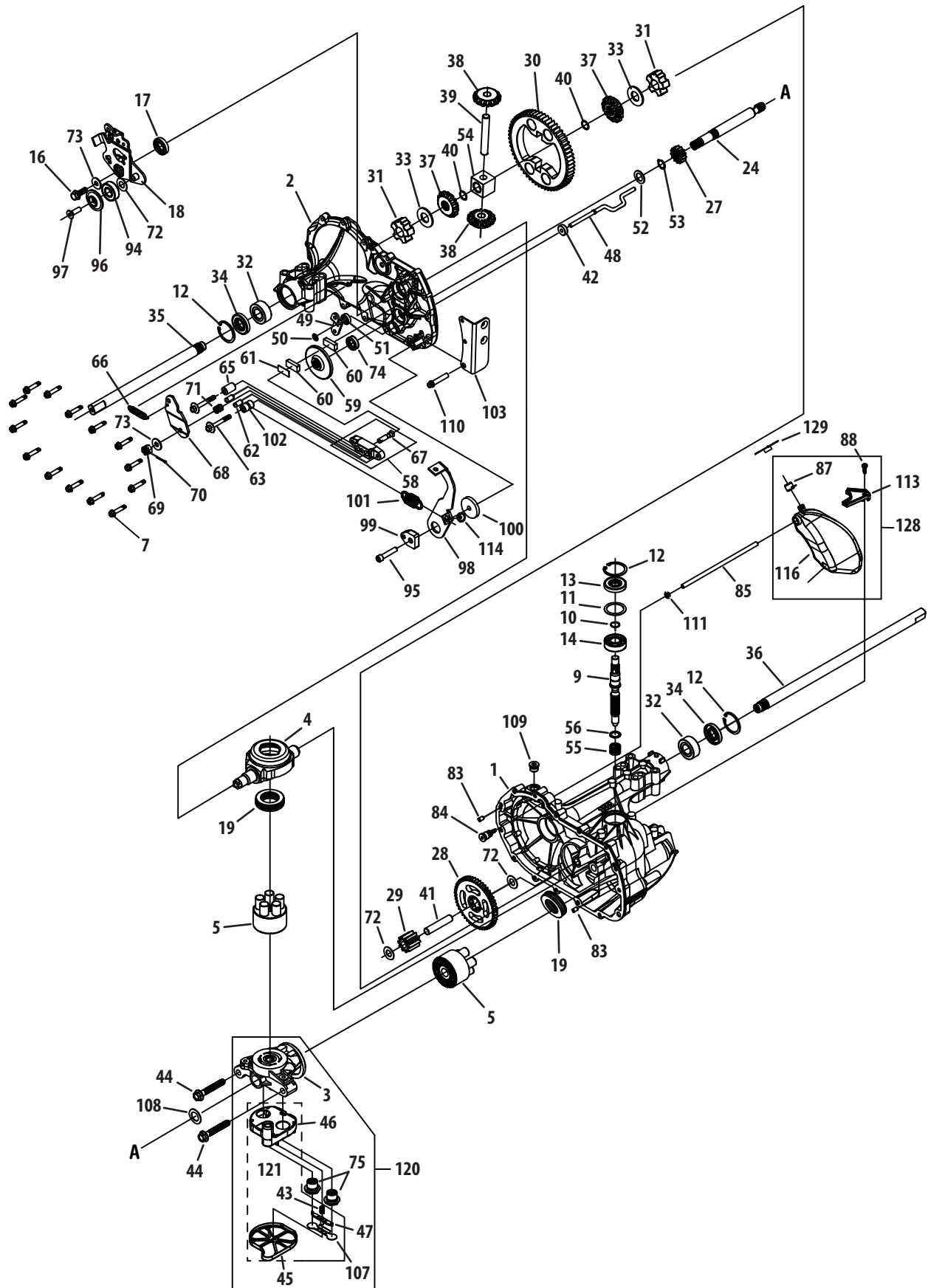
50-inch Deck



Ref.	Part Number	Description
1.	96606	Bracket, Hook, Retainer
2.	918-05016	Spindle Assembly, Pulley, 5.3 Dia.
3.	683-0254B	Bracket Assembly, Deck, Hanger LH
4.	983-04648	Deck Assembly, 50"
5.	703-3279	Stop, Chute, Deflector
6.	710-04095	Hex Screw, 3/8-16, 1.00, Gr5, Spec
7.	710-04484	Screw, Self-tapping, 5/16-18, .750,
8.	710-0528	Hex Screw, 5/16-18, 1.25, Gr5, Std
9.	710-0599	Screw, Self-tapping, 1/4-20, 0.500
10.	710-1008	Screw, Self-tapping, 3/8-16, 1.875
11.	710-3011	Hex Screw, 3/8-16, 2.25, Gr5, Std
12.	710-3103	Hex Screw, 5/16-18, 2.00, Gr5, Std
13.	710-3178	Bolt, Carriage, 3/8-16, 0.75, Gr1
14.	747-05279	Rod, Support, Deck
15.	911-3314	Roller Pin-1/2 Dia. x 7.31
16.	712-0229	Nut, Push, 3/8
17.	912-0240	Nut, Jam, 7/16-20, Gr2
18.	712-04063	Nut, Flange Lock, 5/16-18, Nylon
19.	712-04065	Nut, Flange Lock, 3/8-16, Nylon
20.	712-0417A	Nut, Flange, 5/8-18
21.	712-04243	Nut, 1/2-13
22.	912-0641	Nut, Hex, M16-1.5
23.	912-3010	Nut, Hex, 5/16-18, Gr5
24.	914-0111	Pin, Cotter, 3/32, 1.0
25.	753-04070	Pin, Lynch, .1875
26.	714-04040	Pin, Cotter, Bow-Tie
27.	914-0470	Pin, Cotter, 1/8 x 1.25
28.	917-04074	Gear, Deck, Adjustment
29.	921-04041	Coupler, Water
30.	731-05679	Roller, Front
31.	732-04649	Spring, Extension, 1.0 OD x 6.10
32.	732-04652	Spring, Compr', .535 OD x 1.751
33.	937-3000	Lube Fitting, 3/16
34.	734-04155	Wheel, Deck, 5.0 Dia. Ball

Ref.	Part Number	Description
35.	734-0973	Wheel, Deck 5.0 x 1.38
36.	936-0119	Washer, Lock, 5/16, Regular Duty
37.	936-0179	Washer, Flat, .531 x 1.25 x .100
38.	736-0225	Washer, Lock, 5/8, Int Tooth
39.	936-0275	Washer, Flat, .344 x .688 x .065
40.	936-0300	Washer, Flat, .406 x .875 x .059
41.	703-3511A	Finger Guard
42.	736-0317	Washer, Bell, .63 x 1.25 x .18
43.	736-3010	Washer, Flat, .407 x .812 x.135
44.	737-04003D	Port, Water
45.	938-0373	Bolt, Shoulder, .496 x 1.525, 3/8-16
46.	738-04162A	Spacer, Shoulder, .8840 x .190
47.	938-3056	Bolt, Shoulder, .496 x 2.50, 3/8-16
48.	942-04053C	Blade, 17.90 Star 2 In 1
49.	783-06368A	Belt Guard Bracket
50.	747-05067A	Rod, Lift, Deck, Front, 11.7
51.	756-04216	Pulley, Deck, 5.39 Dia.
52.	747-1116	Rod, Deck Release
53.	750-3119	Spacer, .406 Id x 1.00 OD x .38
54.	954-04240	Belt, V-Type
55.	756-04129B	Pulley, Idler, 4.25"Dia.
56.	750-1096	Spacer, .800 x 1.100 x 1.5300
57.	783-04399	Cover, Belt, LH 50"
58.	783-04400	Cover, Belt, Rh 50"
59.	783-04414A	Skirt, Center, 50"
60.	783-04415	Skirt, RH, 50"
61.	748-0434	Spacer, .750 x 1.150 x .230
62.	783-06361A	Bracket, Idler, Arm
63.	631-04070A	Chute Assembly
64.	711-04565	Pin, Hinge, .3175 Dia. x 14.06 ,1
65.	941-0919	Bearing, Ball, .787id x 1.85 Od x .551
66.	732-04372	Spring, Torsion, .44 I.D. x 2.0,
67.	783-05030	Bracket, Chute 50/54"
68.	738-0976	Shaft, Spindle, 4.1250

Hydrostatic Transmission (Hydro-Gear 311-0510)

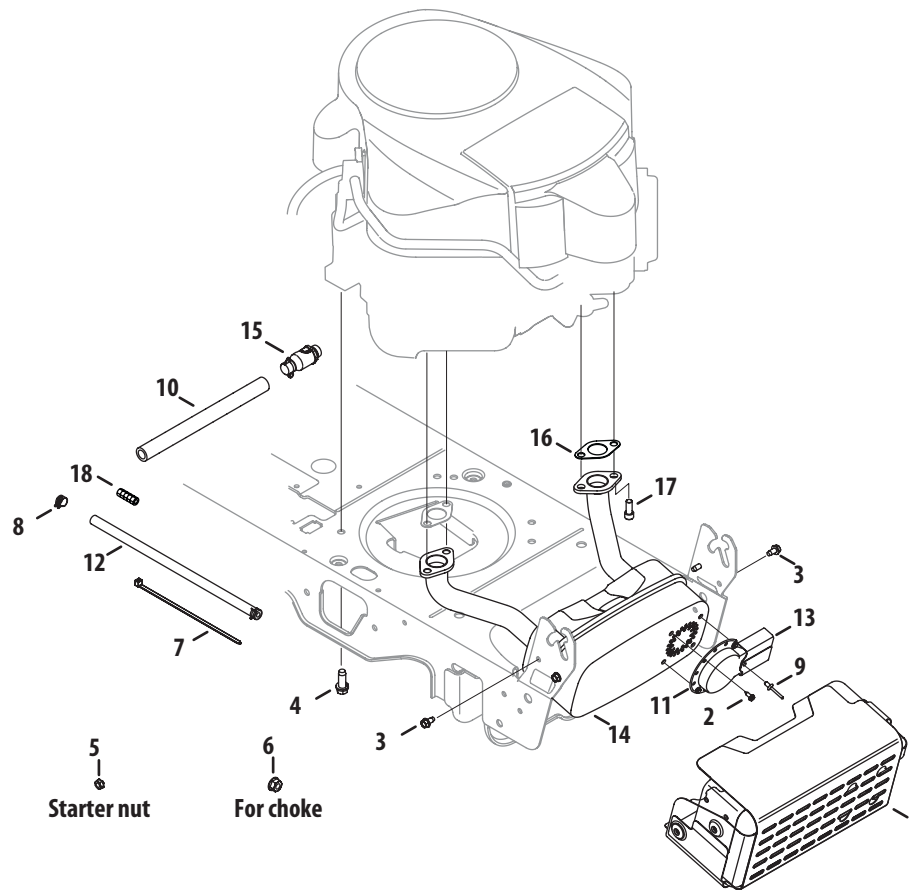


Hydrostatic Transmission (Hydro-Gear 311-0510)

Ref.	Part Number	Description	Ref.	Part Number	Description
1	HG-70467	Main Housing Assembly	40	HG-44871	Ring, Spiral Retaining
		Main Housing, Machined	41	HG-51083	Pin, Jackshaft
		Bushing ,865 x 985 x .790	42	HG-51100	Magnet, Ring
2	HG-70483	Main Housing Assembly	43	HG-51136	Spring, Bypass
		Main Housing, Machined	44	HG-50016	Hydro Mtg Screw 3/8-24 x 2.5
		Bushing ,865 x 985 x .790	45	HG-51581	Bottom, Filter
		Bushing 624 x 719 x .562	46	HG-51580	Base Filter W/ Poppet
3	HG-70477	Center Section Assembly	47	HG-51091	Actuator Bypass
		Center Section Machined	48	HG-51098	Rod Bypass Actuator
		Bushing. 707 x .788 x .591	49	HG-51135	Arm, Bypass
4	HG-51048	Swashplate, Trunnion Machined	50	HG-51116	Retaining Ring 0.250 External
5	HG-70331	Block - Assembly	51	HG-51081	Seal, Lip .741 x .250 x .250 Tc
		Block - Cylinder	52	HG-44371	Flat Washer 5/8 Id x 1.0 Od x .05
		Piston	53	HG-44145	Retaining Ring
		Spring, Compression	54	HG-51071	Bearing, Center Block
		Washer - Thrust	55	HG-2003014	Spring - Helical Compression
7	HG-51190	Hex Flange Screw 1/4-20 x-1,25	56	HG-2003017	Washer
9	HG-51062	Shaft, Input	58	HG-62589	Kit, Brake Yoke
10	HG-2000022	Ring - Retaining			Brake Yoke
11	HG-50951	Spacer			Sq. Hd, Bolt 5/16-24 Ribbed
12	HG-50329	Ring - Retaining	59	HG-51072	Rotor, Brake
13	HG-51161	Seal Lip .67 x 1.58 x .276	60	917-0678	Brake Puck
14	HG-50315	Ball Bearing 17mm Id x 40mm Od	61	917-0682	Puck Plate
16	HG-51064	Bolt. Flange 5/16-24 x .94 (Patch)	62	941-0343	Brake Actuating Pin
17	HG-51140	Lip Seal 18 x 32 x 7	63	HG-51146	Hex Screw 1/4-20 x 2 w/ Patch
18	HG-51119	Arm Control	65	HG-23711	Spacer
19	HG-50551P	Bearing 30x52 x 13 Thrust	66	HG-70896	Kit, Spring
24	HG-50966	Shaft Motor	67	HG-44138	So. Hd, Bolt 5/16-24- Ribbed
27	HG-51130	Gear - Pinnion 13t	68	HG-44094	Arm, Brake
28	HG-51129	10t/48t Gear	69	912-0273	Slotted Hex Nut 5/16-24
29	HG-51043	Gear Jot Jackshaft	70	914-0507	Cotter Pin 3/32 x 3/4
30	HG-51044	60t Bull Gear	71	HG-50919	Comp. Spring Brake Anti-Drag
31	HG-51088	Sleeve Bearing .75 x 1.750 x .625	72	HG-50132	Washer, Ht .5 I. D. x 1 OD, x .032
32	HG-51089	Sleeve Bearing .75 x 1.575 x .625	73	736-0371	Flat Washer, 11/32 ID x 7/8 OD
33	HG-44875	Washer 3/4 Id x 1-1/2 Od x .13 Thk	74	HG-70719	Kit, Seal
34	HG-51066	Lip Seal Axle Seal			Oil, Seal 625 x Lo x .25
35	HG-51079	Shaft Axle .75 x 11.39 (Dd R. H.)			Ring, Ret-Star Washer
36	HG-51078	Shaft Axle .75 x 17.99 (Dd, L. H.)			Bulletin, Shaft Seal
37	HG-71310	Miter Gear (Splined)	75	HG-51084	Check Plug Assem, .027 Washer
38	HG-44097	Miter Gear 15t (0.5 Id)	83	HG-9004800-2506	Pin, Standard Headless
39	HG-50146	Shaft	84	HG-51143	Fitting, 5/16 Sae 5/32 Tube

Hydrostatic Transmission (Hydro-Gear 311-0510)

Ref.	Part Number	Description	Ref.	Part Number	Description
85	HG-51147	Hose, Expansion Tank	121	HG-70756	Filter Assembly
87	HG-51251	Cap., Vent			Bottom Filter
88	HG-50653	Bolt, Self Tapping 10-32 x 112			Base Filter w/ Poppet
94	HG-44147	Ball Bearing .62 Id x 1.38 x 44			Spring Bypass
95	HG-50837	Cap Screw, 5/16-24 x 1-112			Actuator Bypass
96	HG-51200	Spacer, Locating			Deflector
97	HG-50870	Screw, Sfhcs	128	HG-70503	Kit, Expansion Tank
98	HG-51120	Arm, Return			Tank, Expansion
99	HG-51097	Puck, Adjusting			Cap, Vent
100	HG-51122	Washer, .325 OD x 1.6 ID x .150			Bolt, Self Tapping 10-32 x 1/2
101	HG-51131	Spring, Extension			Bracket, Support Expansion Tank
102	HG-51123	Spacer, .56 x .26 x .87			Silicon-Sponge 112 x 1/2 x 3/16
103	HG-51223	Bracket, Torque	129	HG-51252	Cap, Expansion Tank Shipping
107	HG-51134	Deflector	—	HG-50928	Sealant
108	HG-51069	Washer, Motor Shaft .71 Id 1.15 Od	—	HG-70463	Seal, O-Ring Kit
109	HG-9005110-5600	Plug, SAE #6	—	—	20w-50 Oil (78.8 oz)
110	HG-50868	Torx Head Screw, 5/16-18			
111	HG-51144	O-Ring, .07 x .301 ID			
113	HG-51179	Bracket, Support Expansion Tank			
114	HG-51184	Spring Guide			
116	HG-51196	Silicon Sponge			
120	HG-70759	Center Section - Bypass Assm			
		Center Section Machined			
		Base Filter w/ Poppet			
		Check Plug Assembly			
		Spring Bypass			
		Actuator Bypass			
		Deflector			
		Bottom, Filter			
		Bushing, .707 x .788 x .591			



Ref.	Part Number	Description
1.	683-04549	Shield Ass'y, Muffler
2.	710-0227	Screw, Ab, #8-18, 0.500,
3.	710-0599	Screw, Self-tapping, 1/4-20, 0.500,
4.	710-04683	Screw, Self-tapping, 3/8-16, 1.0 Koh.
	710-1315	Screw, Self-tapping, 3/8-16, 1.25 Kaw.
5.	712-0271	Nut, Sems, 1/4-20
6.	912-3005	Nut, Flange Lock, 3/8-16 Kaw.
7.	725-0157	Cable, Tie, 3/16 x .05 x 7.4
8.	726-0205	Clamp, Hose, .490 Dia.
9.	728-04000†	Rivet, Pop, .188 Dia x .300
10.	751-3141-14	Hose, Extension, Oil Drain

Ref.	Part Number	Description
11.	751-0564B	Deflector, Muffler Koh.
12.	751-10349	Hose, Fuel, Low Permeation, 1/4
13.	751-10353	Deflector, Muffler, Long
	751-11053	Deflector, Muffler, Long *
14.	751-10528A	Muffler, Kohler
	751-11471	Muffler, Kawasaki Twin
15.	951-10517A	Drain, Oil Koh.
16.	KH-24-041-49-S	Gasket, Exhaust, Koh.
17.	710-1314A	Screw, Sockt Head, 5/16-18, .750 Koh.
18.	751-12089-28	Hose, Vent *

† If Equipped

* Models built after Jan. 1, 2011.

LTX 1050KW Labels

777D15416



777D12864



777D15402



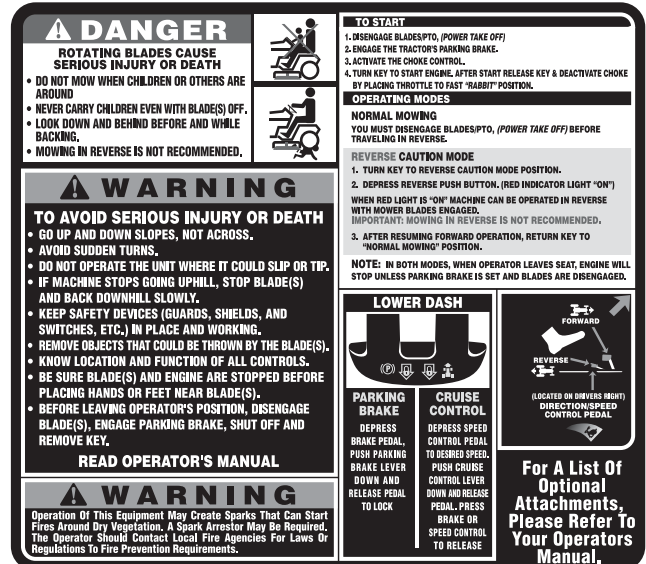
777I23293



777D15269



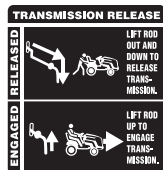
777S33185



777D15268



777I23132



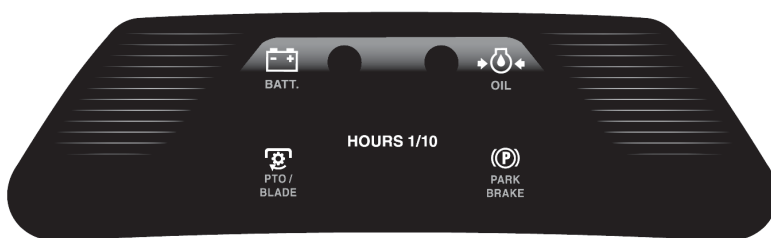
777D15400



777D15409



777I23490



777I23295



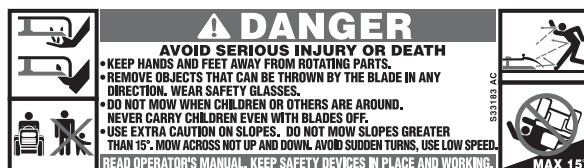
777D15417



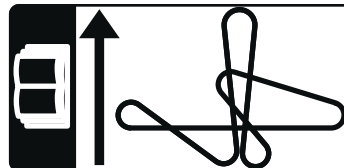
777D15418



777S33183



777I23150

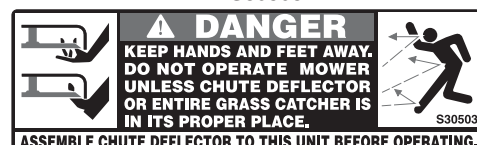


777X44900

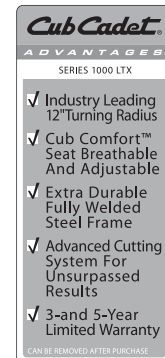
MODEL LTX 1050 REPLACEMENT PARTS			
Use only Cub Cadet genuine factory parts			
Blades	949-14053C(23)	Oil Filter	KM-49065-7007
Lower Drive Belt	954-04207	Air Filter	KM-11013-7049
Engine To Deck Belt	954-04240	Spark Plug	KM-BPR4ES
Deck Spindles	918-05016	Fuel Filter	KM-49019-7005
Ignition Key	825-2054A	Oil Capacity	70.4 oz
Solenoid	725-04439		

www.cubcadet.com

777S30503



777D15419



777I23133



777D15460



777D12864



777D15459



777I22679



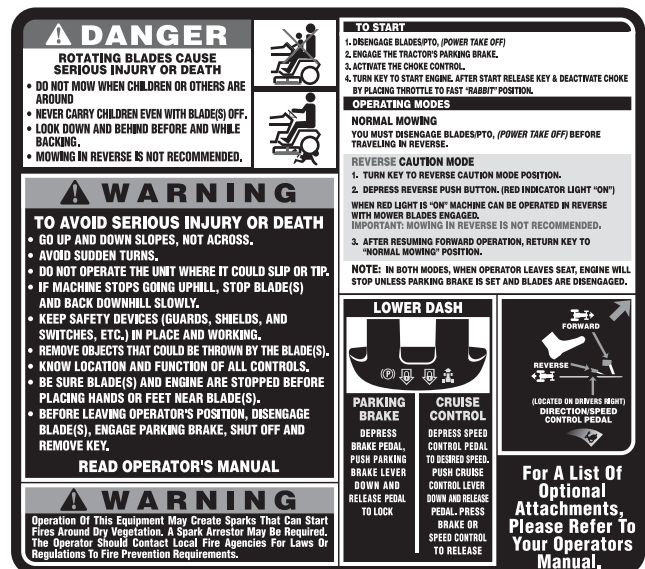
777I23293



777D15269



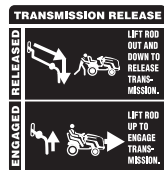
777S33233



777D15268



777I23132



777D15400



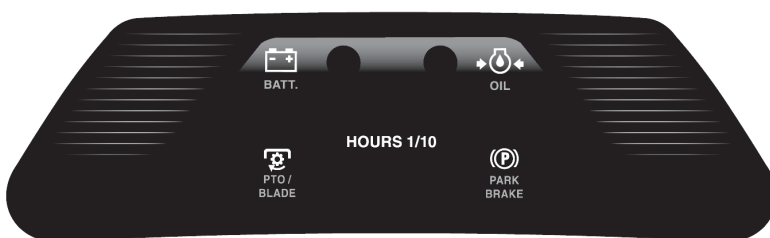
777D15409



777D15402



777I23490



777I23294



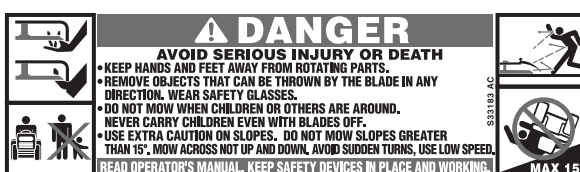
777D15417



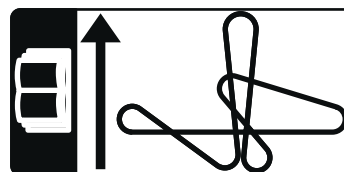
777D15418



777S33183



777I23150

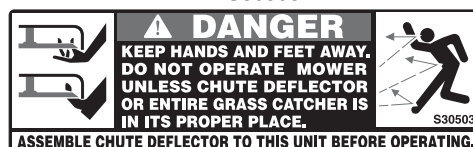


777X44920

MODEL LTX 1050 REPLACEMENT PARTS			
Use only Cub Cadet genuine factory parts			
Blades	942-04030C (3)	Oil Filter	KN-12-050-01-S
Lower Drive Belt	954-04207	Air Filter	KN-32-883-03-S1
Engine To Deck Belt	954-04240	Spark Plug	759-3336
Deck Spindles	918-05016	Fuel Filter	KN-25-050-22-S1
Ignition Key	925-2054A	Oil Capacity	57.6 oz
Solenoid	725-04439		

www.cubcadet.com

777S30503



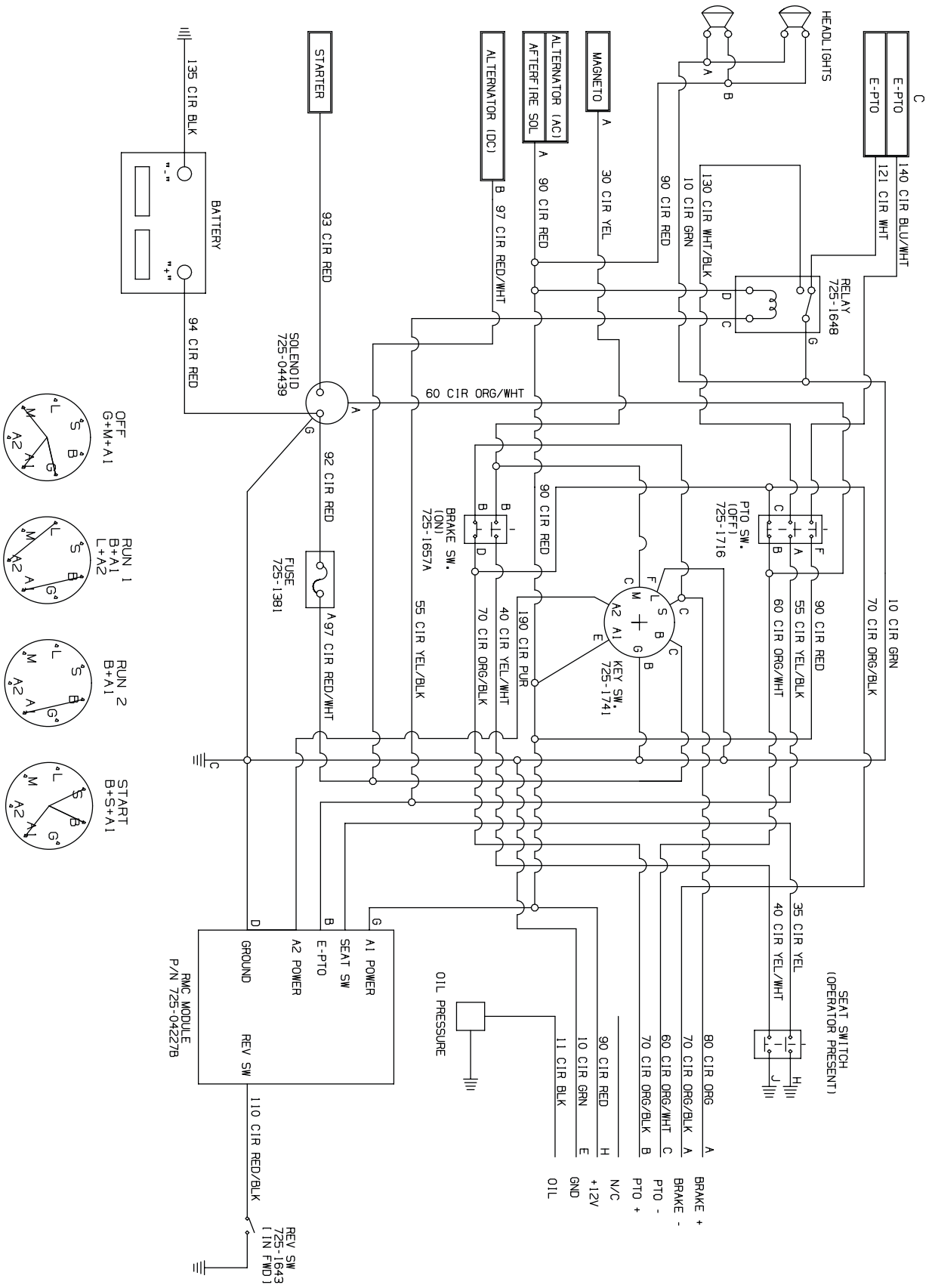
777D15419



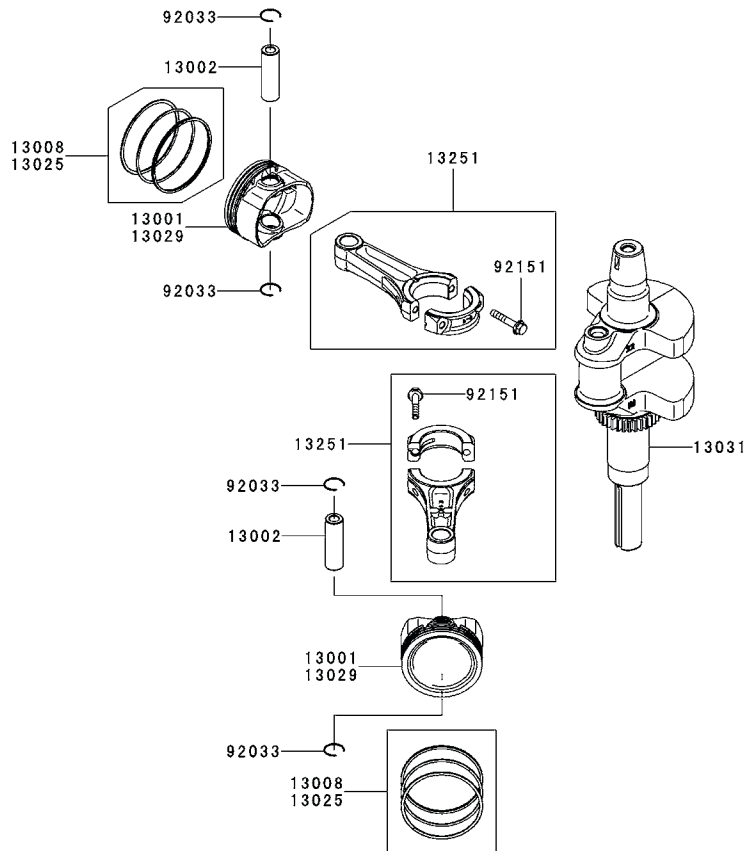
777I23133



LTX 1050/KW Electrical Schematic



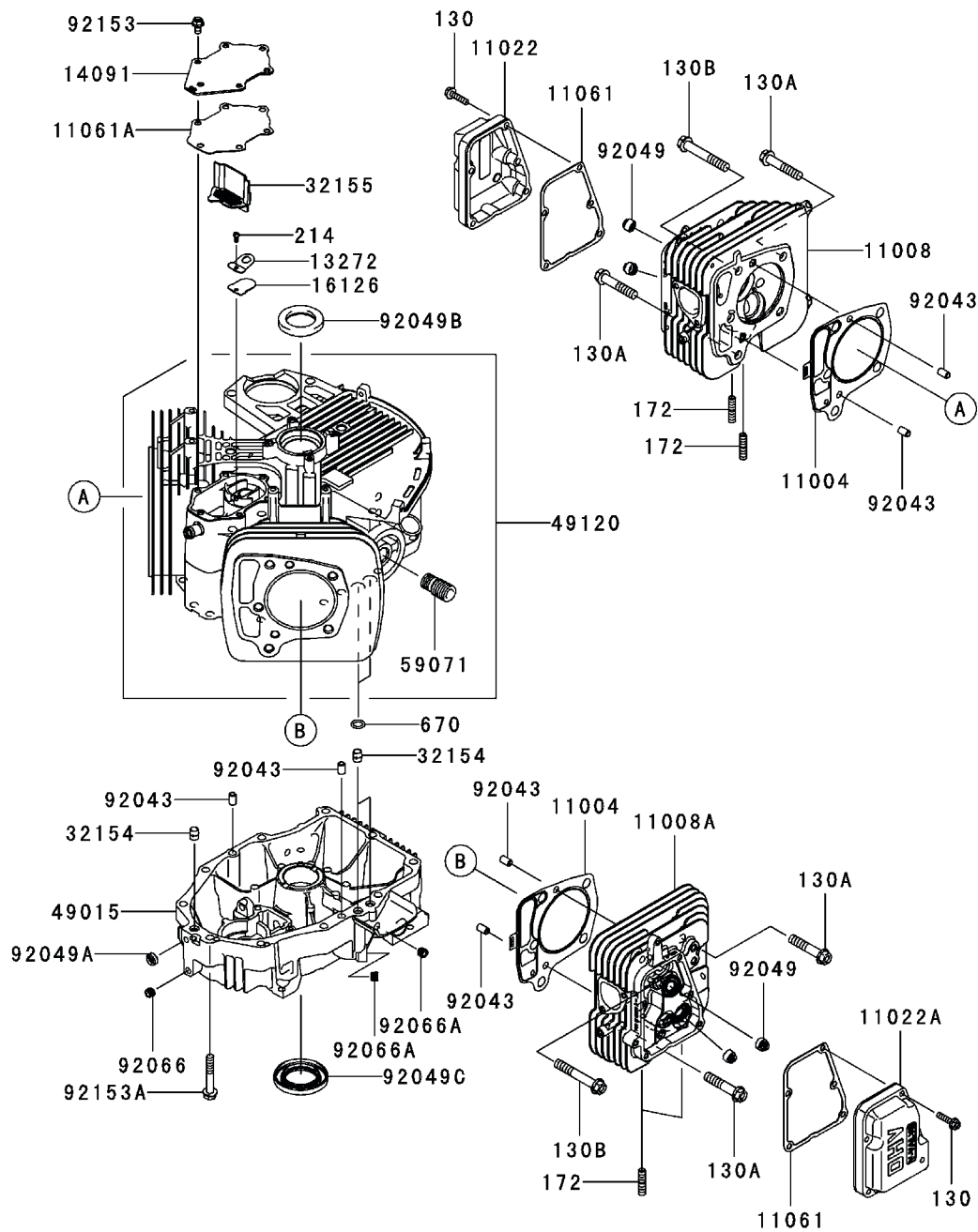
E0120-A398A



Ref.	Part Number	Description
13001	KM-13001-7027	Engine Piston
13002	KM-13002-7006	Piston Pin
13008	KM-13008-7005	Piston Ring Set
13025	KM-13025-7009	Piston Ring Set L, 0.5
13029	KM-13029-7010	Engine Piston L, 0.5
13031	KM-13031-7084	Complete Crankshaft
13251	KM-13251-7025	Connecting Rod Assembly
92033	KM-92033-7016	Snap Ring
92151	KM-92151-7017	Bolt, 6 X 35

Kawasaki FR651V Cylinder/Crankcase

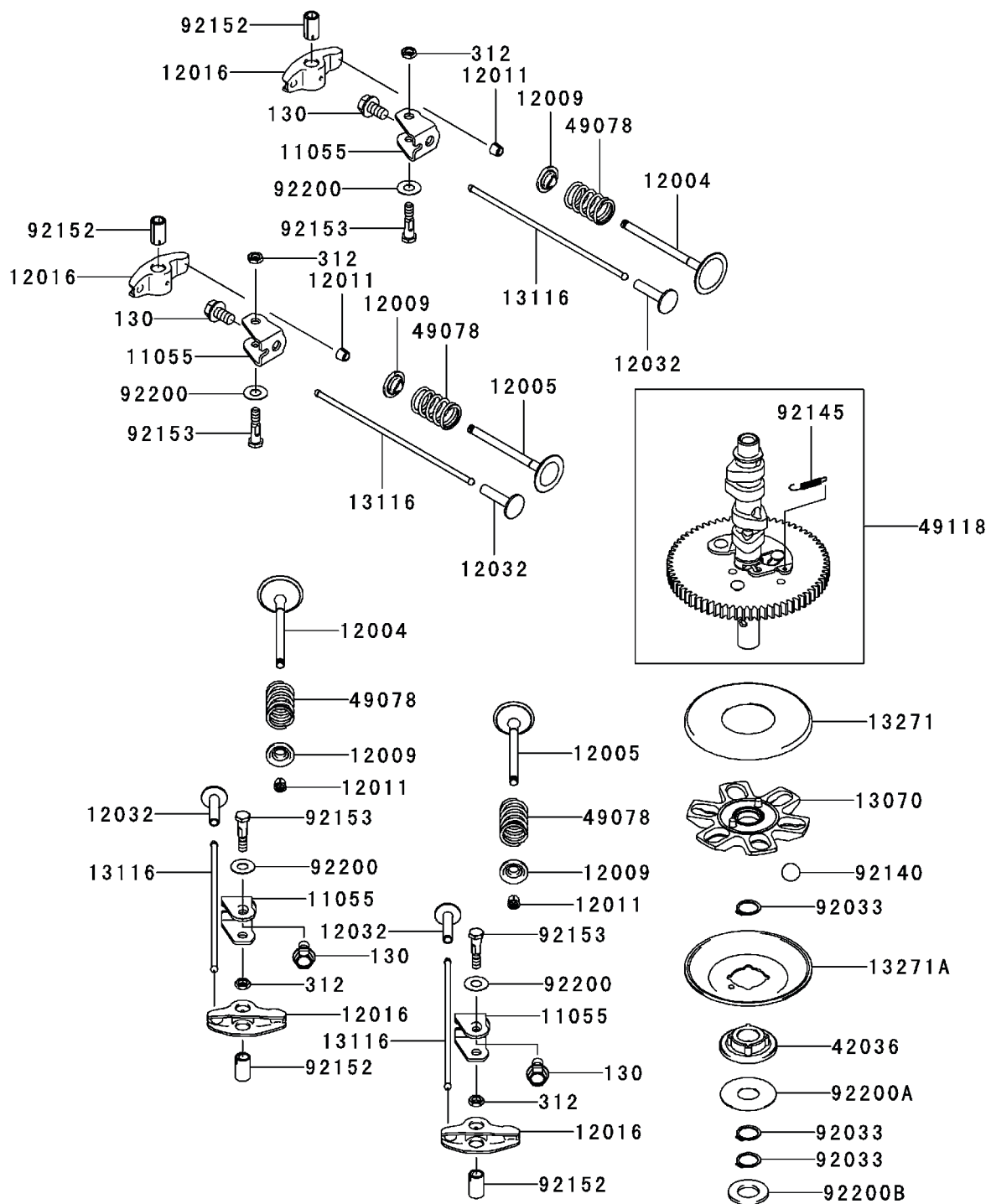
E0110-A630A



Kawasaki FR651V Cylinder/Crankcase

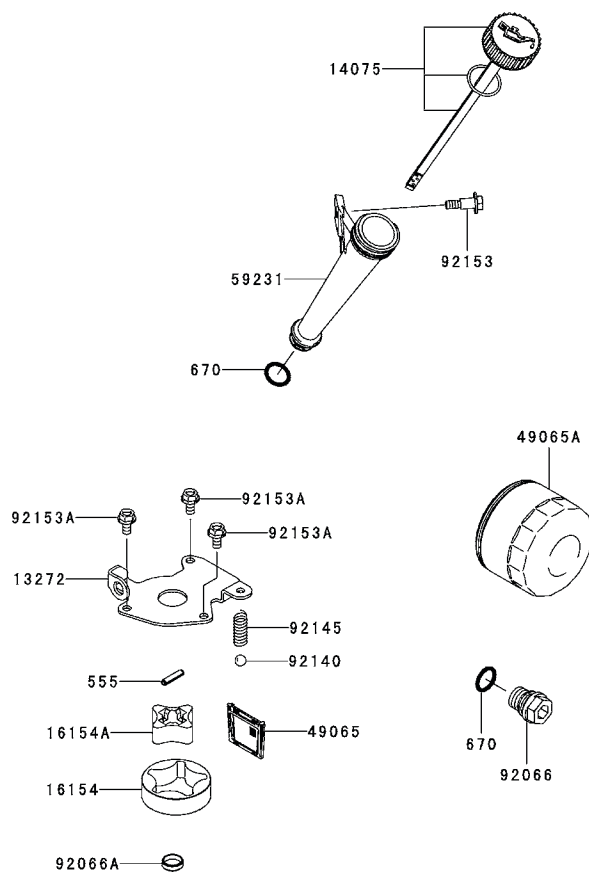
Ref.	Part Number	Description
11004	KM-11004-7026	Head Gasket
11008	KM-11008-7039	Complete Cylinder Head, #1
11008A	KM-11008-7040	Complete Cylinder Head, #2
11022	KM-11022-7019	Rocker Case, #1
11022A	KM-11022-7020	Rocker Case, #2
11061	KM-11061-7083	Rocker Case Gasket
11061A	KM-11061-7084	Breather Gasket
13272	KM-13272-7004	Breather Plate
14091	KM-14091-7064	Breather Cover
16126	KM-16126-7020	Breather Valve
32154	KM-32154-7019	Pipe
32155	KM-32155-7003	Breather Pipe
49015	KM-49015-7079	Crankcase Cover
49120	KM-49120-7122	Complete Crankcase
59071	KM-59071-2079	Joint
92043	KM-92043-1263	Pin
92049	KM-92049-7001	Oil Seal, RVC2, 6 X 11 X 10.2
92049A	KM-92049-7005	Oil Seal, So 8 X 14 X 5 HS
92049B	KM-92049-7010	Oil Seal, Sd 35 X 48 X 8 R HS
92049C	KM-92049-7028	Oil Seal, 38 X 62 X 8 MTCLV
92066	KM-92066-7023	Plug
92066A	KM-92066-7026	Plug
92153	KM-92153-7043	Bolt, 6 X 12
92153A	KM-92153-7054	Bolt, 8 X 50
130	KM-130AA0625	Flanged Bolt, 6 X 25
130A	KM-130CA1050	Flanged Bolt, 10 X 50
130B	KM-130CA1065	Flanged Bolt, 10 X 65
172	KM-172BA0818	Stud Bolt, 8 X 18
214	KM-214AA0408	Pan Screw +-, 4 X 8
670	KM-670B2011	O-Ring, 11mm

E0130-A176A



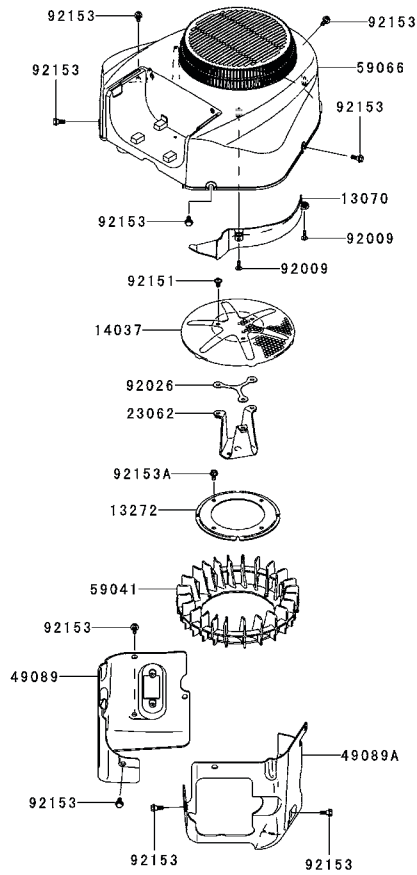
Ref.	Part Number	Description
11055	KM-11055-7009	Bracket
12004	KM-12004-7008	Intake Valve
12005	KM-12005-7009	Exhaust Valve
12009	KM-12009-7001	Valve Spring Retainer
12011	KM-12011-2056	Collet
12016	KM-12016-2066	Rocker Arm
12032	KM-12032-7001	Tappet
13070	KM-13070-7017	Governor Guide
13116	KM-13116-7007	Push Rod
13271	KM-13271-7007	Plate
13271A	KM-13271-7021	Governor Plate
42036	KM-42036-7010	Sleeve
49078	KM-49078-7002	Engine Valve Spring, IN
49118	KM-49118-7022	Complete Camshaft
92033	KM-92033-7001	Snap Ring
92140	KM-92140-7005	Ball
92145	KM-92145-7001	Spring
92152	KM-92152-7012	Collar
92153	KM-92153-7100	Bolt, 6 X 29.5
92200	KM-92200-2151	Washer, 8.1 X 18 X 0.5
92200A	KM-92200-7009	Washer, 16 X 42 X 0.91
92200B	KM-92200-7048	Washer, 16.3 X 30 X 2.28
130	KM-130AA0814	Flanged Bolt, 8 X 14
312	KM-312AA0600	Hex Nut, 6mm

E0140-A447A



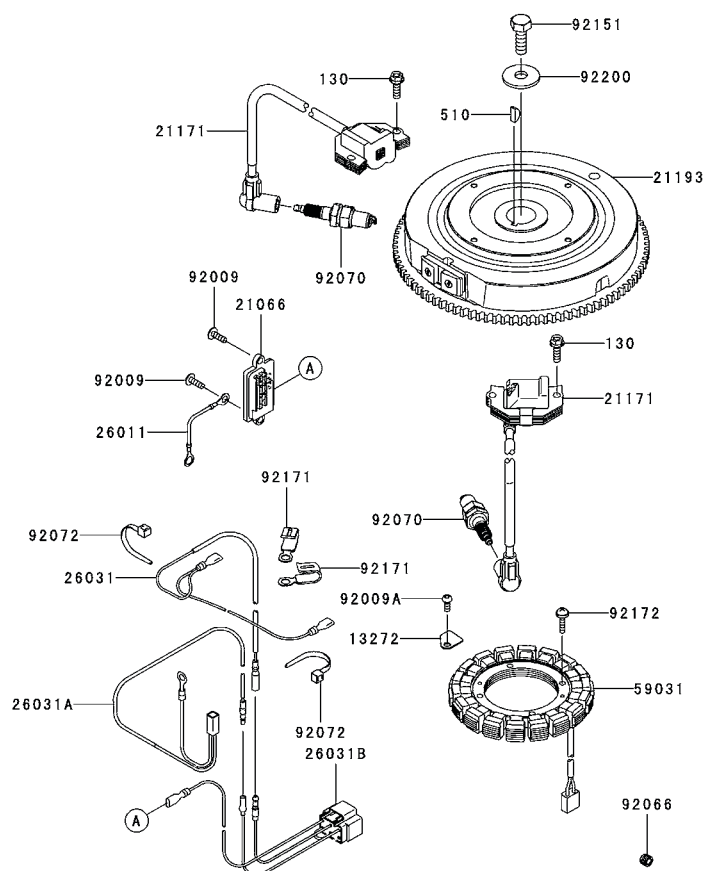
Ref.	Part Number	Description
13272	KM-13272-7011	Rotor Plate
14075	KM-14075-7013	Oil Gauge Cap Assembly
16154	KM-16154-7010	Outer Rotor Pump
16154A	KM-16154-7011	Inner Rotor Pump
49065	KM-49065-7006	Oil Filter
49065A	KM-49065-7007	Oil Filter
59231	KM-59231-7016	Filler
92066	KM-92066-7003	Plug
92066A	KM-92066-7028	Plug
92140	KM-92140-7003	Ball
92145	KM-92145-7002	Spring
92153	KM-92153-7008	Bolt
92153A	KM-92153-7043	Bolt, 6 X 12
555	KM-555A0420	Spring Pin, 4 X 20
670	KM-670D2016	O-Ring, 16mm

E0150-A873A



Ref.	Part Number	Description
13070	KM-13070-7019	Cooling Air Guide
13272	KM-13272-7006	Fan Plate
14037	KM-14037-70089H	Screen
23062	KM-23062-7005	Complete Bracket
49089	KM-49089-7079	Engine Shroud
49089A	KM-49089-7080	Engine Shroud
59041	KM-59041-7014	Fan
59066	KM-59066-7063	Fan Housing
92009	KM-92009-2303	Screw
92026	KM-92026-7007	Spacer
92151	KM-92151-7012	Bolt, 6 X 12
92153	KM-92153-7007	Bolt
92153A	KM-92153-7043	Bolt, 6 X 12

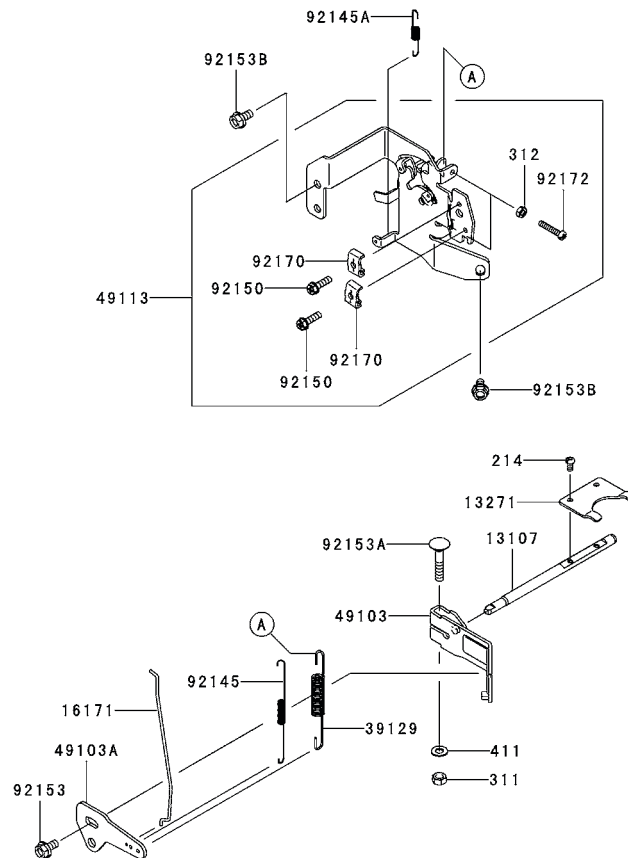
E0160-B284A



Ref.	Part Number	Description
13272	KM-13272-7012	Plate
21066	KM-21066-7017	Voltage Regulator
21171	KM-21171-7041	Ignition Coil Assembly
21193	KM-21193-7038	Flywheel Assembly
26011	KM-26011-7025	Lead Wire, L = 95
26031	KM-26031-7040	Harness
26031A	KM-26031-7041	Harness
26031B	KM-26031-7044	Harness
59031	KM-59031-7017	Charging Coil
92009	KM-92009-2303	Screw

Ref.	Part Number	Description
92009A	KM-92009-2308	Screw
92066	KM-92066-7026	Plug
92070	KM-BPR4ES	Spark Plug, BPR4ES (NGK)
92072	KM-92072-7003	Band
92151	KM-92151-2097	Bolt, 12 X 30
92171	KM-92171-7008	Clamp
92172	KM-92172-7018	Screw, 5 X 20
92200	KM-92200-7002	Washer
130	KM-130AA0620	Flanged Bolt, 6 X 20
510	KM-510A5100	Woodruff Key

E0170-A652A

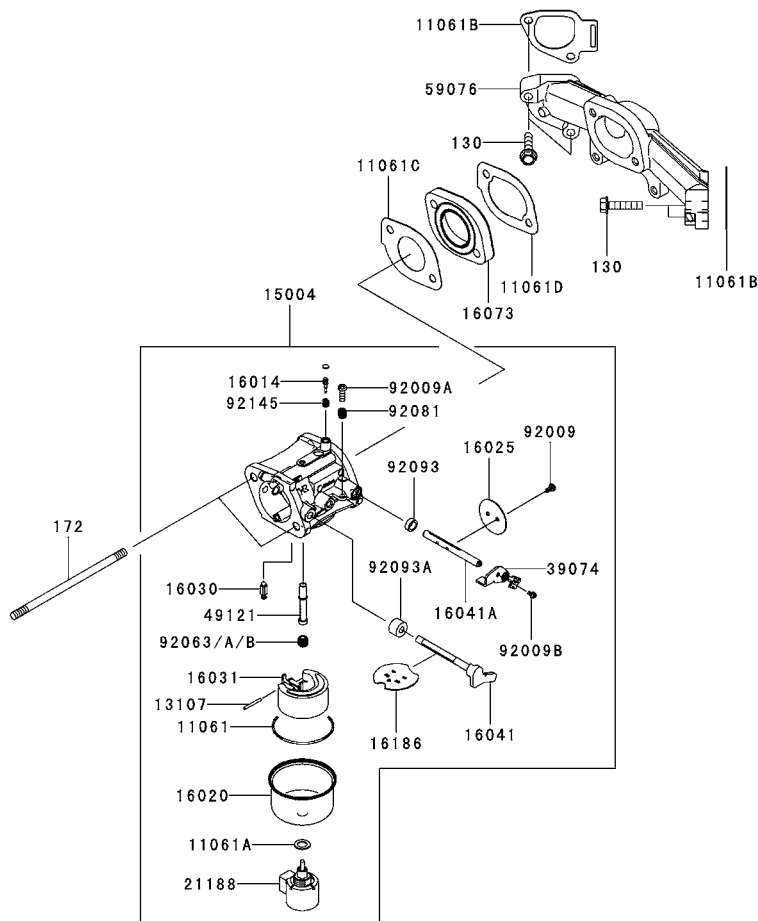


Ref.	Part Number	Description
13107	KM-13107-7047	Shaft
13271	KM-13271-7038	Plate
16171	KM-16171-7022	Link
39129	KM-39129-7035	Governor Spring
49103	KM-49103-7014	Governor Arm
49103A	KM-49103-7015	Governor Arm
49113	KM-49113-7050	Complete Control Panel
92145	KM-92145-7057	Spring
92145A	KM-92145-7058	Spring
92150	KM-92150-2182	Bolt, 5 X 18

Ref.	Part Number	Description
92153	KM-92153-0009	Bolt, 6 X 12
92153A	KM-92153-7033	Bolt, 6 X 35
92153B	KM-92153-7043	Bolt, 6 X 12
92170	KM-92170-7001	Clamp
92172	KM-92172-7035	Screw, 5 X 30
214	KM-214AA0408	Pan Screw +-, 4 X 8
311	KM-311AA0600	Hex Nut, 6mm
312	KM-312AA0500	Hex Nut, 5mm
411	KM-411AA0600	Plain Washer, 6mm

Kawasaki FR651V Carburetor

E0180-A778A

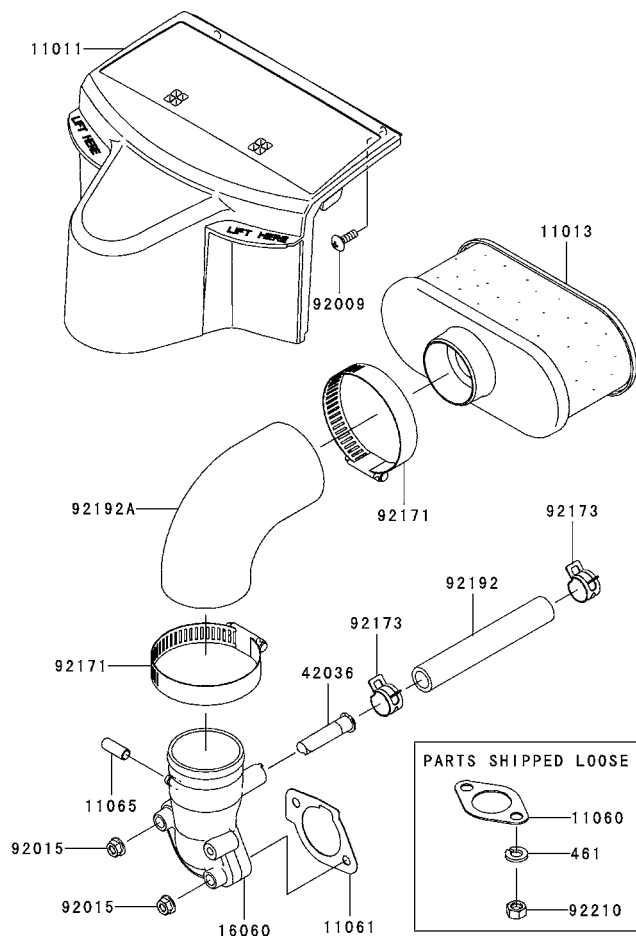


Ref.	Part Number	Description
11061	KM-11061-7009	Chamber Gasket
11061A	KM-11061-7010	Screw Gasket
11061B	KM-11061-7085	Manifold Gasket
11061C	KM-11061-7087	Insulator Gasket
11061D	KM-11061-7088	Insulator/Manifold Gasket
13107	KM-13107-7018	Shaft
15004	KM-15004-7062	Carburetor Assembly
16014	KM-16014-7010	Pilot Air Screw
16020	KM-16020-7003	Float Chamber
16025	KM-16025-7017	Throttle Valve
16030	KM-16030-7003	Float Valve
16031	KM-16031-7002	Float
16041	KM-16041-7050	Choke Carburetor Shaft
16041A	KM-16041-7051	Throttle Carburetor Shaft
16073	KM-16073-7013	Insulator
16186	KM-16186-7006	Choke Valve Assembly

Ref.	Part Number	Description
21188	KM-21188-7002	Solenoid
39074	KM-39074-7001	Throttle Lever Assembly
49121	KM-49121-7018	Main Nozzle
59076	KM-59076-7019	Intake Manifold
92009	KM-92009-2083	Screw
92009A	KM-92009-2349	Screw
92009B	KM-92009-2402	Screw
92063	KM-92063-7141	Main Jet, #122
92063A	KM-92063-7142	Main Jet, #124
92063B	KM-92063-7149	Main Jet, #120
92081	KM-92081-2234	Spring
92093	KM-92093-2100	Seal
92093A	KM-92093-7003	Seal
92145	KM-92145-2122	Spring
130	KM-130AA0630	Flanged Bolt, 6 X 30
172	KM-172BA06115	Stud Bolt, 6 X 115

Kawasaki FR651V Air Filter/Muffler

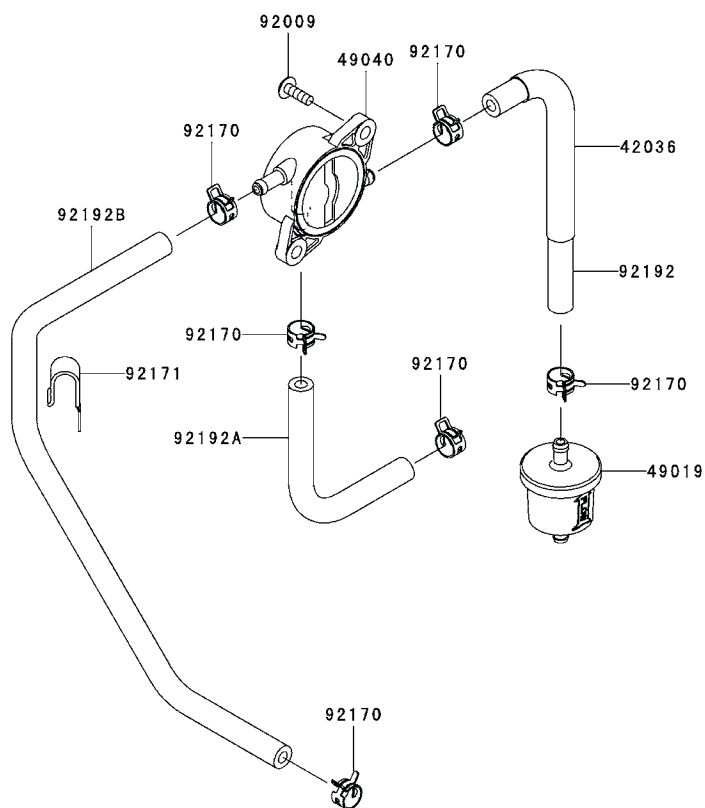
E0190-B094A



Ref.	Part Number	Description
11011	KM-11011-7054	Air Filter Case
11013	KM-11013-7049	Air Filter Element
11060	KM-11060-7016	Muffler Gasket
11061	KM-11061-7086	Carburetor/Intake Pipe Gasket
11065	KM-11065-7023	Cap
16060	KM-16060-7038	Intake Pipe
42036	KM-42036-7017	Breather Sleeve
92009	KM-92009-2303	Screw
92015	KM-92015-1367	Nut
92171	KM-92171-7007	Clamp
92173	KM-92173-7003	Clamp
92192	KM-92192-7146	Tube, 12.6 x 18.6 x 118
92192A	KM-99999-7082	Air Filter Tube
92210	KM-92210-7027	Nut, M8
461	KM-461DA0800	Spring Washer, 8mm

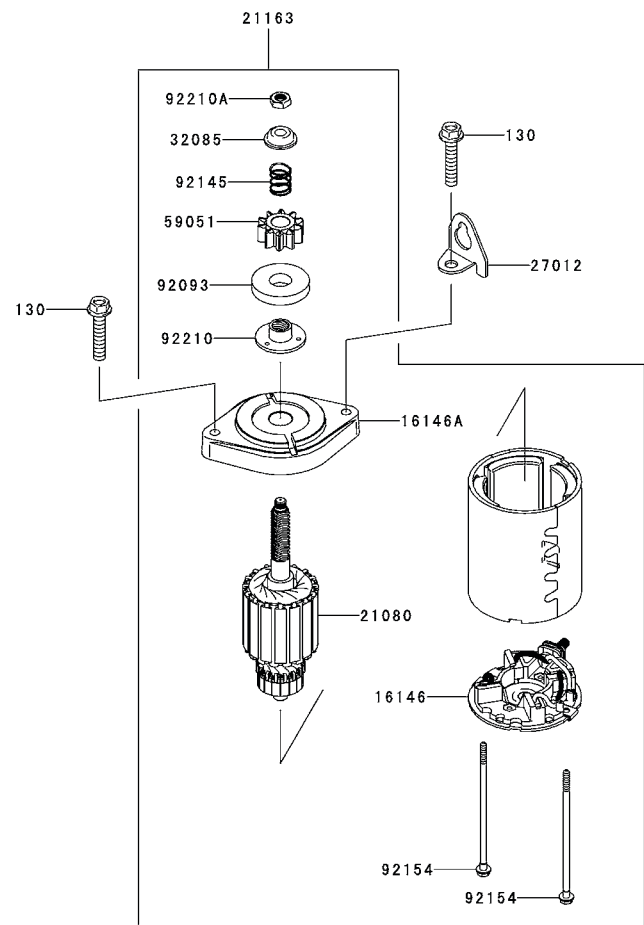
Kawasaki FR651V Fuel tank/Fuel Valve

E0200-A679A



Ref.	Part Number	Description
42036	KM-42036-7015	Sleeve
49019	KM-49019-7005	Fuel Filter
49040	KM-49040-7008	Fuel Pump
92009	KM-92009-2303	Screw
92170	KM-92170-2009	Clamp
92171	KM-92171-7008	Clamp
92192	KM-92192-7145	Tube, 6.35 X 12.7 X 185
92192A	KM-92192-7148	Tube, 6.4 X 12.7 X 150
92192B	KM-92192-7188	Tube, 6.35 X 12.7 X 390

E0210-A457A



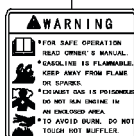
Ref.	Part Number	Description
16146	KM-16146-7027	Cover Assembly
16146A	KM-16146-7028	Cover Assembly
21080	KM-21080-7006	Armature
21163	KM-21163-0711	Electric Starter
27012	KM-27012-7004	Hook
32085	KM-99999-0309	Stopper
59051	KM-59051-7034	Spur Gear
92093	KM-92093-7007	Seal
92145	KM-92145-7060	Spring
92154	KM-92154-7001	Bolt
92210	KM-92210-7017	Nut
92210A	KM-99999-0309	Nut
130	KM-130AA0840	Flanged Bolt, 8 x 40

F0290-B469A

56033



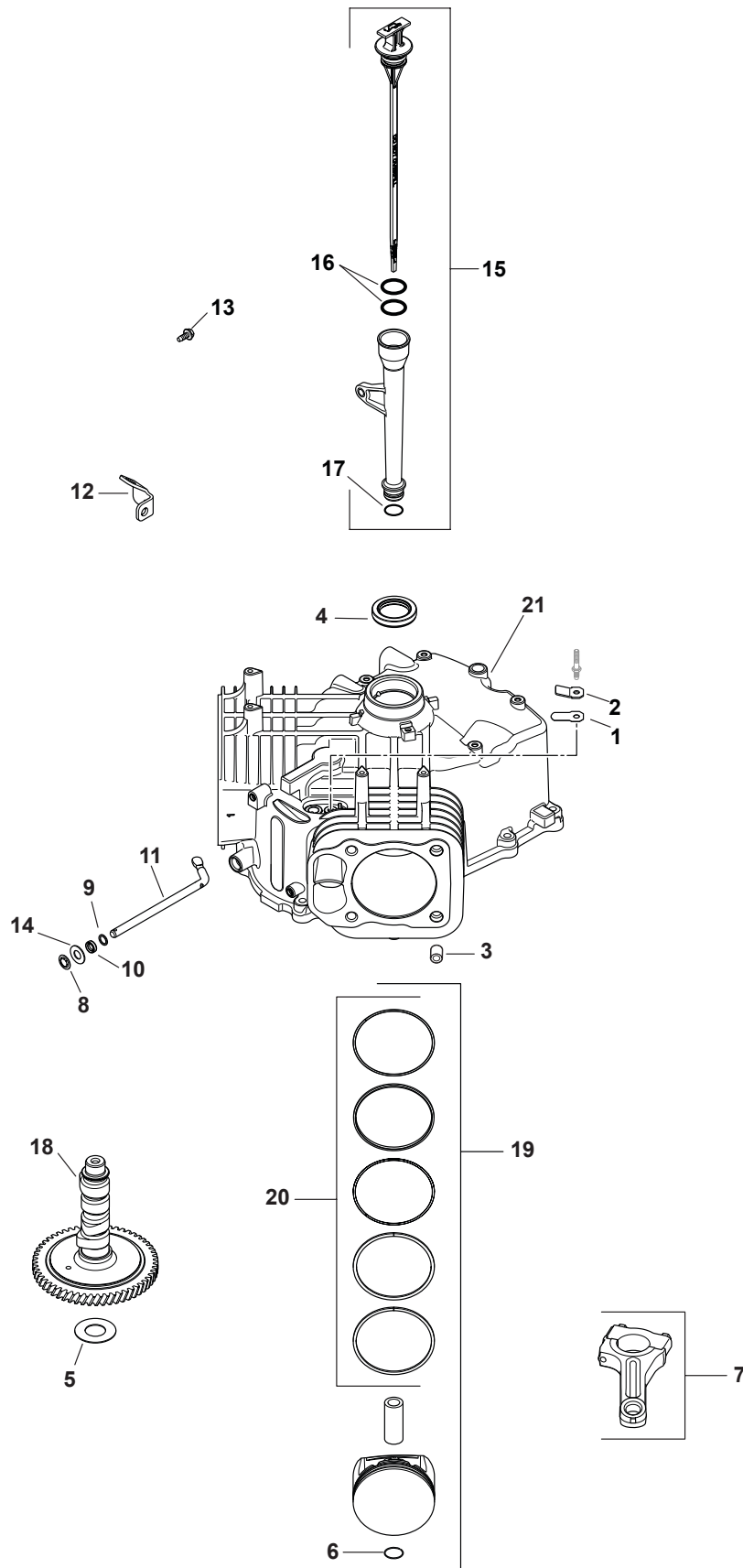
56070



Ref.	Part Number	Description
56033	KM-56033-7001	Manual Label
56070	KM-56070-7001	Warning Label

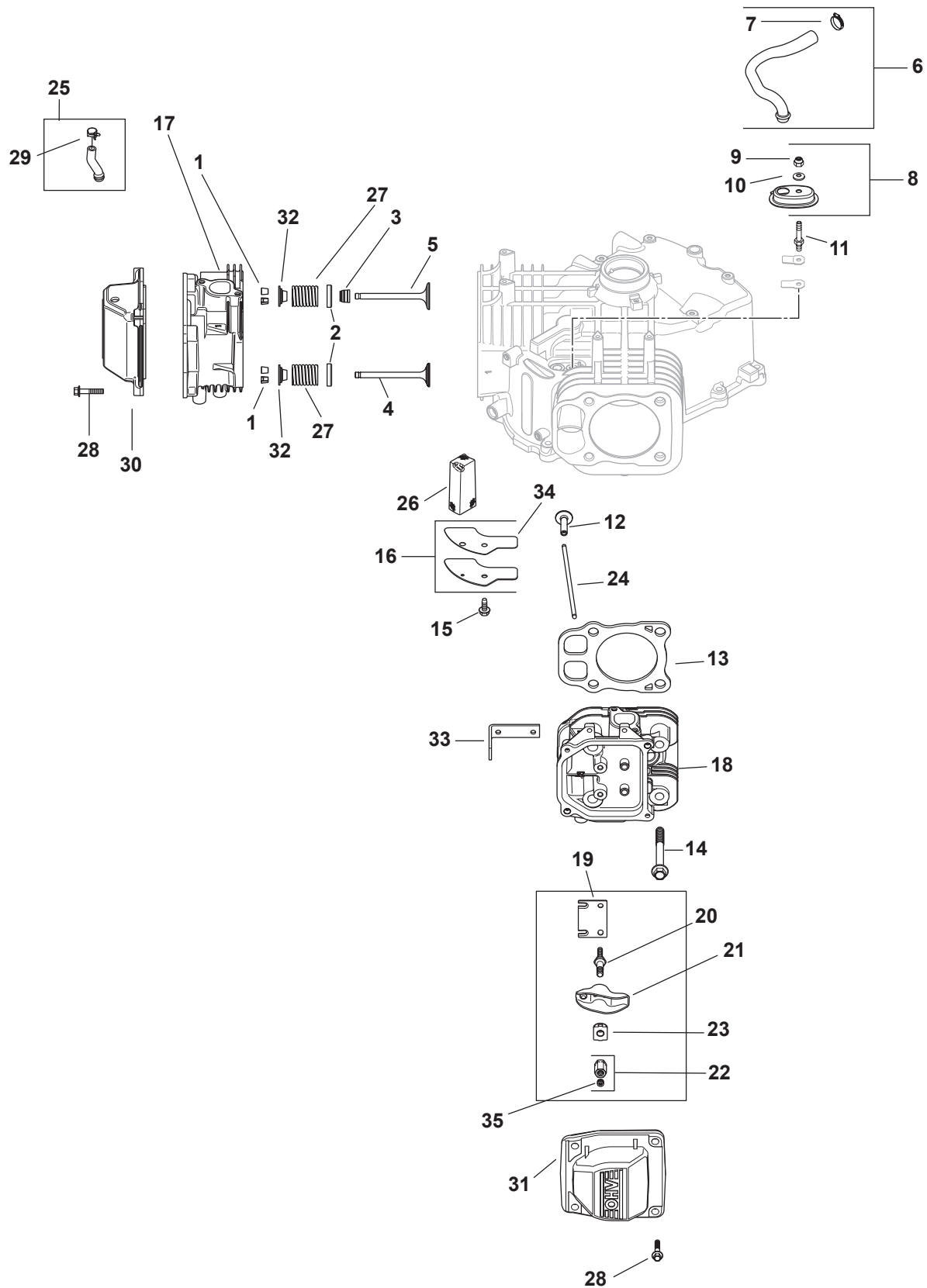
Page Left Blank Intentionally

Kohler SV725 Crankcase



Ref.	Part Number	Description
1	KH-12-402-02	Breather Reed
2	KH-24-018-04-S	Breather Reed Retainer
3	KH-24-380-16-S	Locating Pin
4	KH-24-032-19-S	Oil Seal, 1.78 x 1.26
5	KH-12-422-07-S	Camshaft Shim, .028 (White)
—	KH-12-422-08-S	Camshaft Shim, .03 (Blue)
—	KH-12-422-09-S	Camshaft Shim, .032 (Red)
—	KH-12-422-10-S	Camshaft Shim, .034 (Yellow)
—	KH-12-422-11-S	Camshaft Shim, .036 (Green)
—	KH-12-422-12-S	Camshaft Shim, .038 (Gray)
—	KH-12-422-13-S	Camshaft Shim, .04 (Black)
6	KH-24-018-01-S	Piston Pin Retainer
7	KH-24-067-28-S	Connecting Rod (STD)
8	KH-24-018-09-S	Ring Retainer
9	KH-24-468-15-S	Flat Washer, 1 ¹ / ₂
10	KH-28-032-09-S	Governor Cross Shaft Seal
11	KH-24-144-38-S	Governor Cross Shaft
12	KH-24-126-19	Oil Fill Tube Bracket
13	KH-M-545013-S	Flange Screw, M5 x .8 x 13
14	KH-M-931010-S	Flat Washer, 9mm
15	KH-32-755-04-S	Dipstick & Tube Kit
16	KH-25-153-09-S	O-Ring
17	KH-12-153-01-S	Lower Oil Fill Tube O-Ring
18	KH-32-010-05-S	Camshaft Assembly
19	KH-25-874-03-S	Piston Kit w/ Ring
20	KH-32-108-01-S	Ring Set, Piston STD
21	N/A	Crankcase (Use Short Block)
NS	KH-25-357-14-S	Camshaft Lubricant

Kohler SV725 Head/Valve/Breather

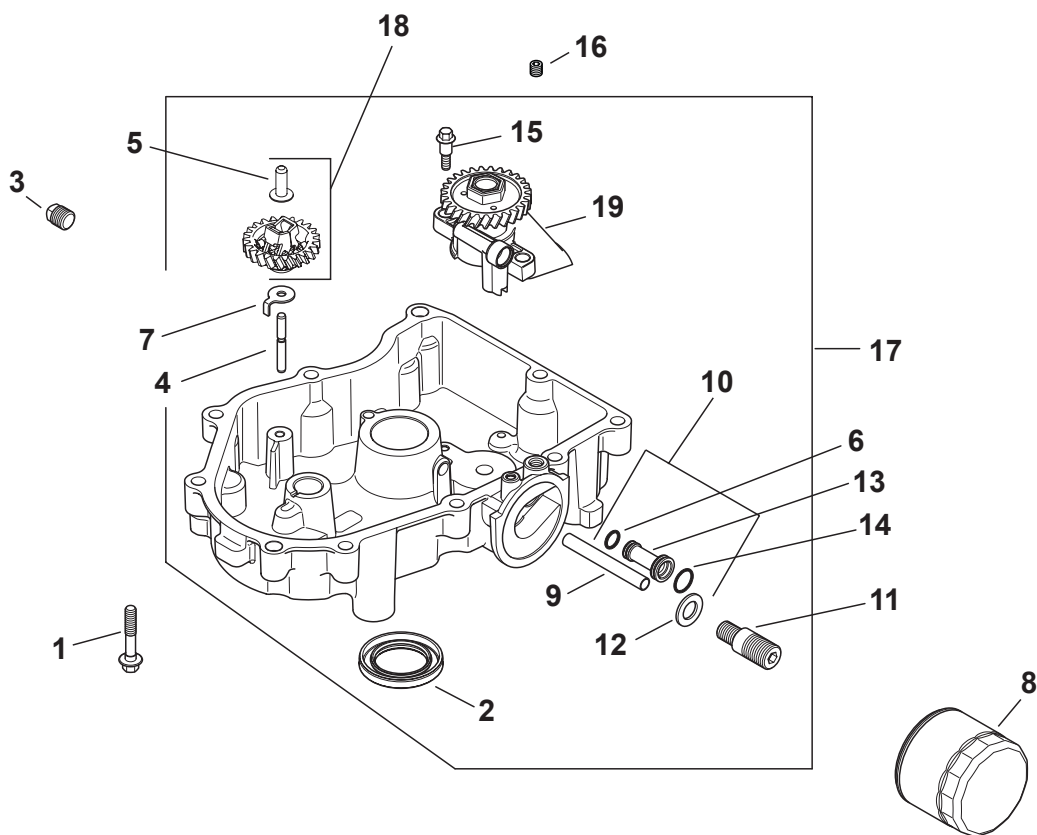


Kohler SV725 Head/Valve/Breather

Ref.	Part Number	Description
1	KH-12-755-03	Retainer Kit
2	KH-235011-S	Spring Retainer
3	KH-66-032-05-S	Valve Stem Seal
4	KH-24-016-01	Exhaust Valve (STD)
5	KH-24-017-01	Intake Valve (STD)
6	KH-32-326-06-S	Breather Hose Kit (Inc. #7)
7	KH-25-237-14-S	Hose Clamp, ½
8	KH-32-081-02-S	Breather Housing Kit (Inc. #9 & 10)
9	KH-M-547050-S	Lock Nut, M5 x .8
10	KH-32-468-01-S	Sealing Washer
11	KH-32-072-03-S	Breather Cover Stud
12	KH-32-019-02-S	Tappet
13	KH-32-841-01-S	Cylinder Head Gasket Kit
14	KH-62-086-08-S	Flange Screw, M10 x 1.5 x 90
15	KH-M-645016-S	Flange Screw, M6 x 1.0 x 16
16	KH-32-096-04-S	Breather Cover Kit
17	KH-32-318-13-S	#1 Cylinder Head Assembly Kit (Inc. Exhaust Mounting Hardware)
18	KH-32-318-14-S	#2 Cylinder Head Assembly Kit (Inc. Exhaust Mounting Hardware)

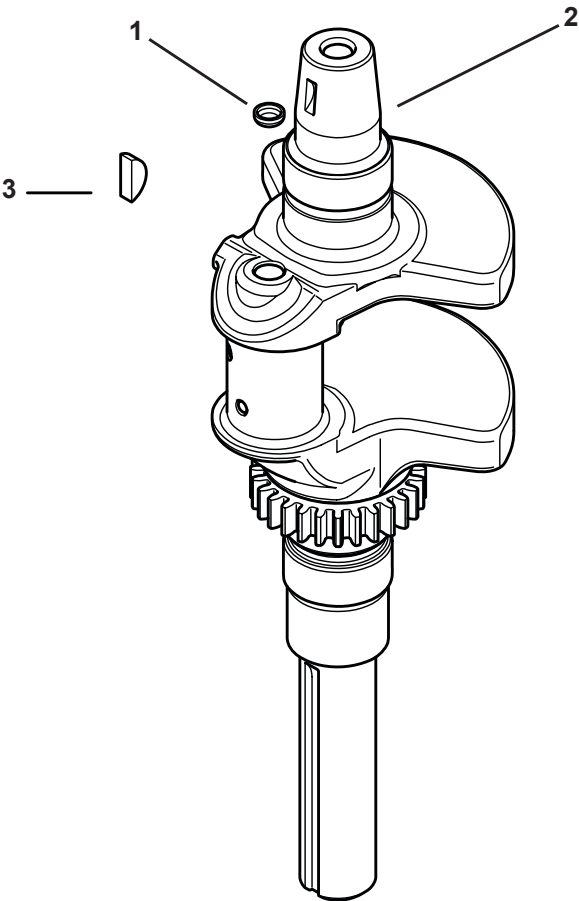
Ref.	Part Number	Description
19	KH-32-146-09-S	Guide Plate
20	KH-32-072-04-S	Rocker Stud
21	KH-32-186-03-S	Rocker Arm
22	KH-32-100-05-S	Hex Nut Assembly
23	KH-25-599-01-S	Rocker Arm Pivot
24	KH-32-411-04-S	Push Rod
25	KH-32-326-07-S	Fuel Pump Hose w/ Clamp Kit
26	KH-32-050-05-S	Breather Filter
27	KH-32-089-05-S	Valve Spring
28	KH-25-086-374-S	Pan Head Screw
29	KH-25-237-01-S	Hose Clamp
30	KH-25-096-10-S	Rocker Stamped Steel Cover
31	KH-25-096-09-S	Rocker Stamped Steel Cover
32	KH-25-173-28-S	Valve Spring Cap
33	KH-25-445-03-S	Lifting Strap
34	KH-32-041-01-S	Breather Cover
35	KH-25-086-168-S	Set Screw
NS	KH-32-755-03-S	Cylinder Head Hardware Kit (Inc. #1-5, 19-22, 23-24)

Kohler SV725 Oil Pan/Lubrication

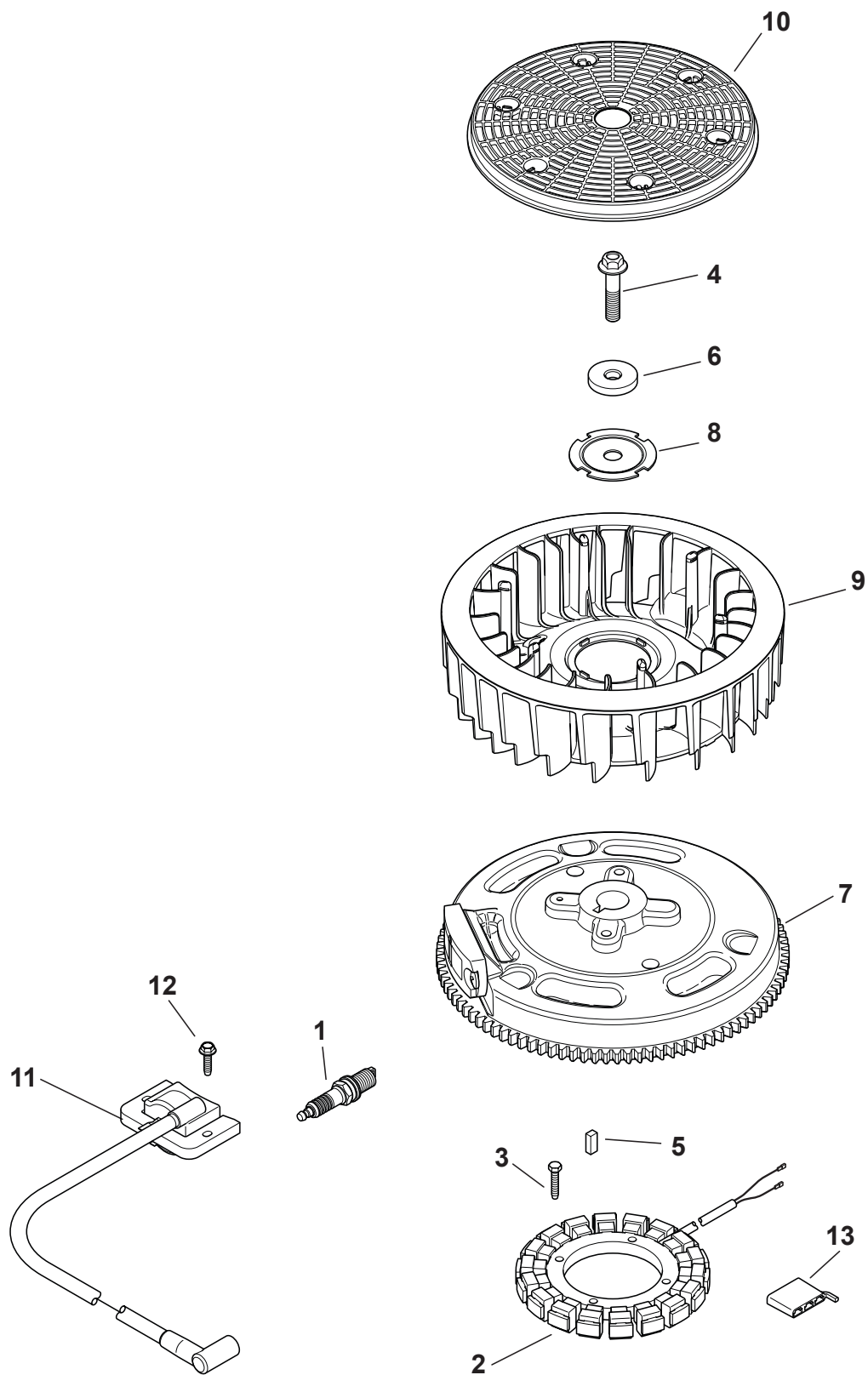


Ref.	Part Number	Description
1	KH-24-086-17-S	Flange Screw, M8 x 1.25 x 45
2	KH-25-032-06-S	Oil Seal, 2.38 x 1.45
3	KH-25-139-57-S	Square Head Pipe Plug, $\frac{3}{8}$
4	KH-12-144-02	Governor Gear Shaft
5	KH-12-380-01	Governor Regulating Pin
6	KH-24-153-01	Oil Pick-Up O-Ring
7	KH-24-448-02-S	Locking Tab
8	KH-12-050-01-S	Oil Filter
9	KH-32-123-01-S	Oil Feed Tube (Filter to Pan)
10	KH-32-123-09-S	Oil Feed Tube Assembly

Ref.	Part Number	Description
11	KH-32-136-05-S	Oil Filter Nipple
12	KH-32-468-02-S	Flat Washer
13	KH-32-123-06-S	Oil Feed Tube
14	KH-32-153-05-S	O-Ring
15	KH-32-086-01-S	Screw, M6 x 6.5
16	KH-25-139-60-S	Pipe Plug, $\frac{1}{8}$
NS	KH-32-199-14-S	Oil Pan Assembly
NS	KH-32-310-02-S	Governor Gear Kit
NS	KH-32-393-16-S	Oil Pump Assembly

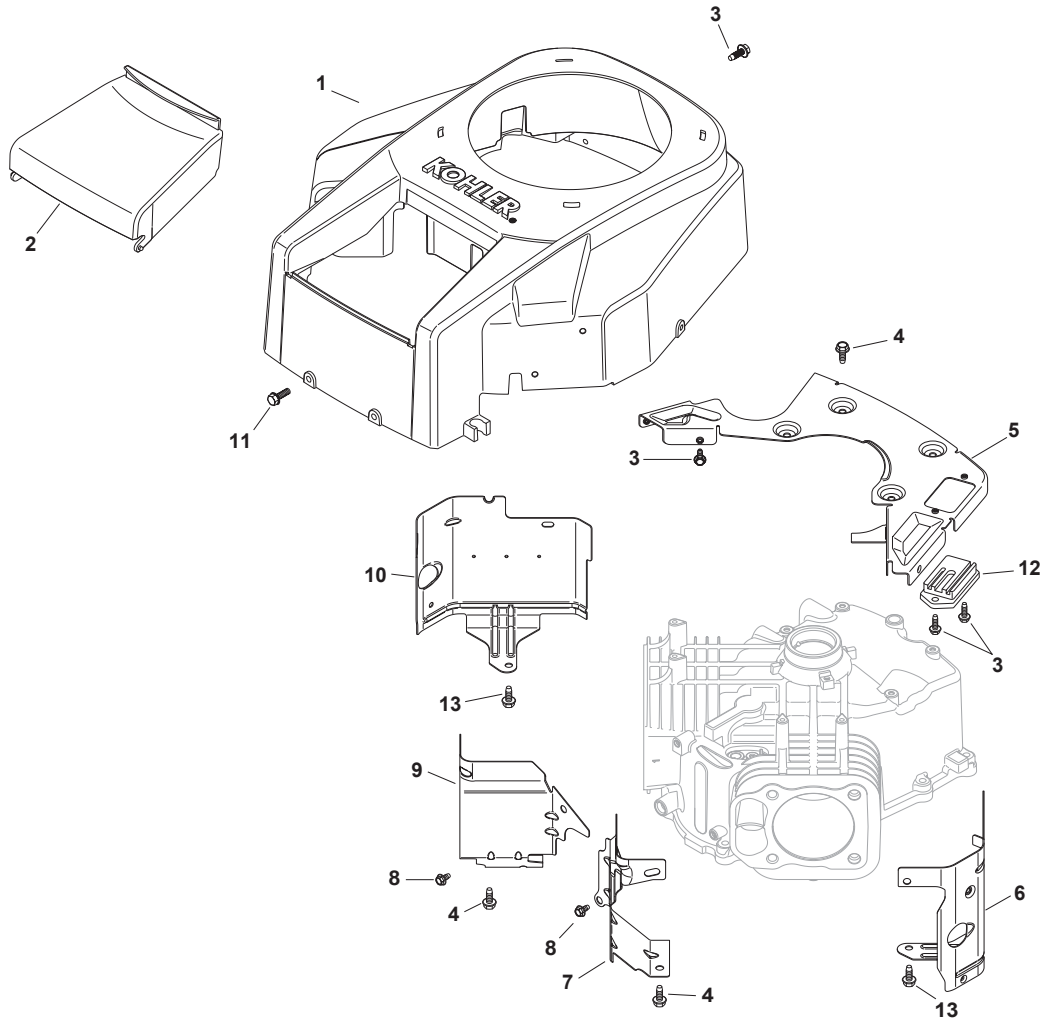


Ref.	Part Number	Description
1	KH-52-139-09-S	Cup Plug
2	KH-32-014-305-S	Crankshaft
3	KH-X-43-1-S	Key, 1/8 x 1/2

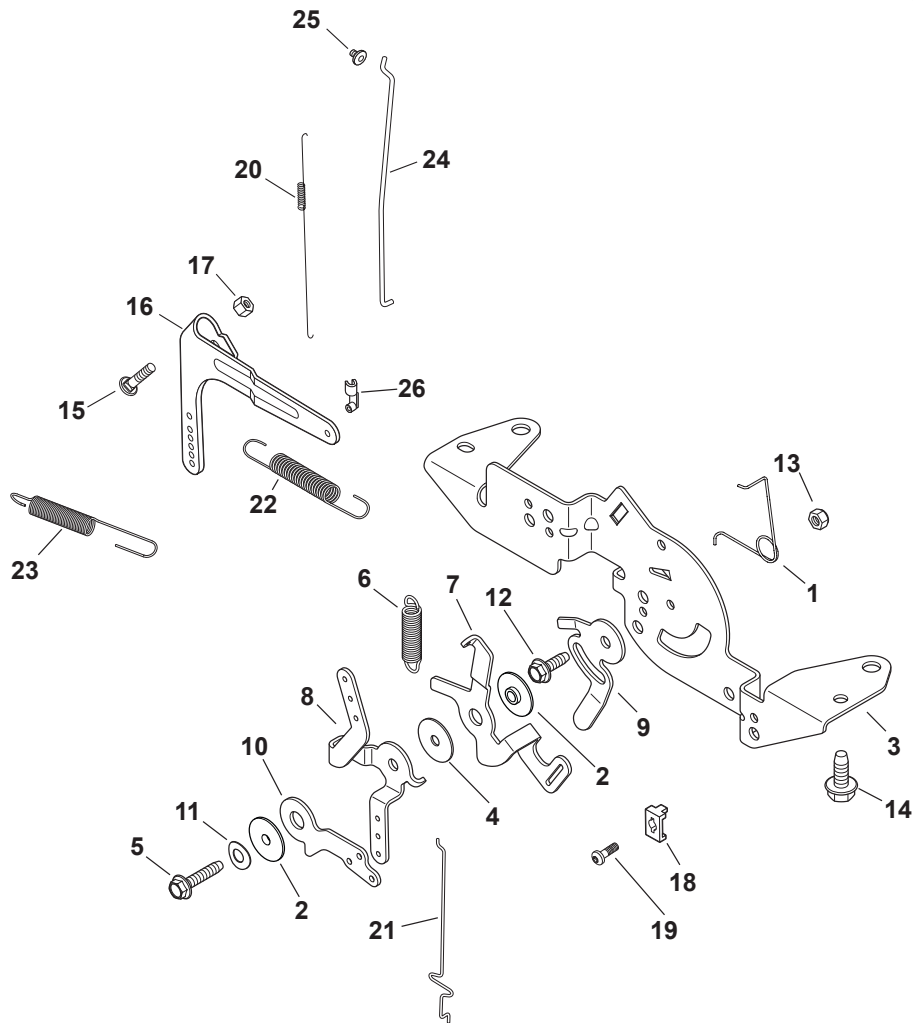


Ref.	Part Number	Description
1	759-3336	Spark Plug
2	KH-237878	15 Amp Stator Kit (Inc. KH-25-452-01-S)
3	KH-M-548025-S	Screw, M5 x 0.8 x 25
4	KH-25-086-361-S	Hex Flange Screw
5	KH-25-340-04-S	Square Key
6	KH-25-468-09-S	Flat Washer
7	KH-32-025-16-S	Flywheel Assembly
8	KH-20-146-05-S	Fan Mounting Plate
9	KH-32-157-01-S	Fan
10	KH-32-162-03-S	Grass Screen
11	KH-24-584-45-S	Module Ignition Kit
12	KH-M-545020-S	Flange Screw, M5 x .8 x 20
13	KH-25-155-41-S	Connector
NS	KH-25-454-03-S	Wire Tie
NS	KH-25-454-05-S	Tie
NS	KH-32-176-24-S	Wiring Harness

Kohler SV725 Blower Housing & Baffles



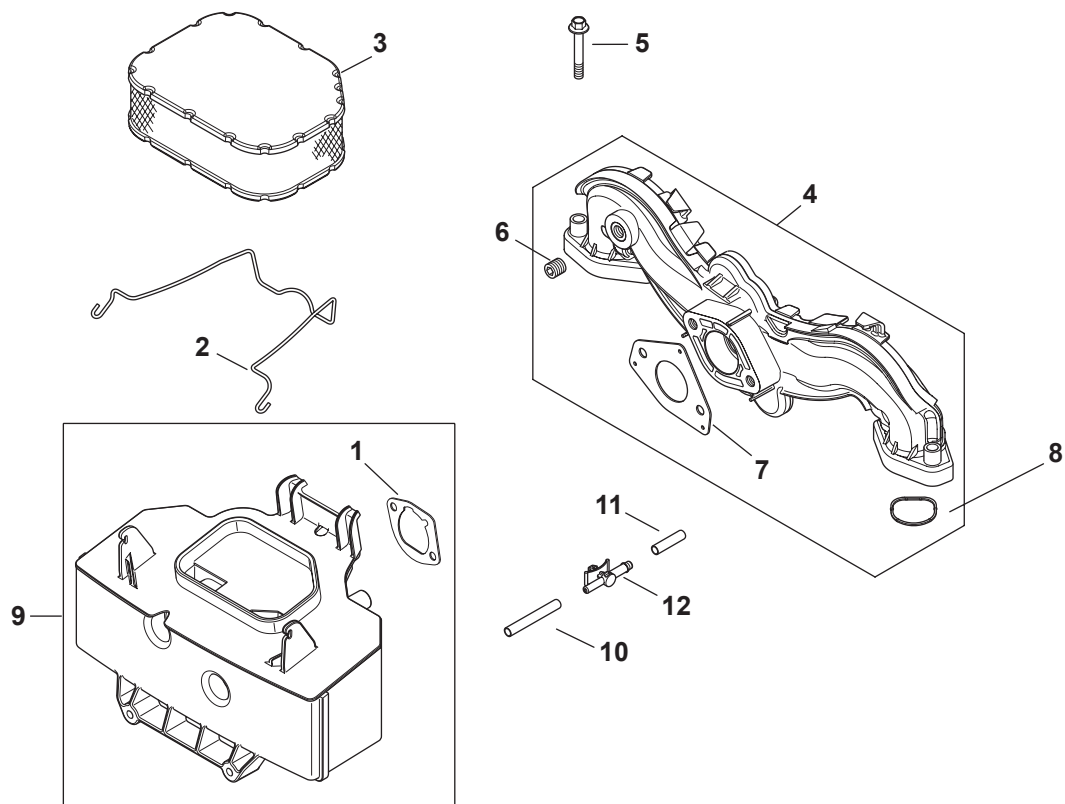
Ref.	Part Number	Description
1	KH-32-027-03-S	Blower Housing Kit (Fixed Guard) (Inc. KH-41-037-10-S)
2	KH-32-096-08-S	Air Cleaner Cover
3	KH-M-545016-S	Flange Screw, M5 x .8 x 16
4	KH-M-645016-S	Flange Screw, M6 x 1.0 x 16
5	KH-32-146-05-S	Backing Plate Kit
6	KH-32-063-12-S	Cylinder Barrel Baffle, #2 Side
7	KH-32-063-02-S	Valley Baffle, #2 Cylinder
8	KH-M-0545010	Flange Screw, M5 x .8 x 10
9	KH-24-063-93-S	Valley Baffle, #1 Cylinder
10	KH-32-063-10-S	Cylinder Barrel Baffle, #1 Side
11	KH-24-086-12	Tap Screw, M6 x 1.7 x 18
12	KH-41-403-10-S	Regulator/Rectifier
13	KH-25-086-158-S	Screw, M6 x 1.0 x 10
NS	KH-41-037-10-S	Service Nameplate



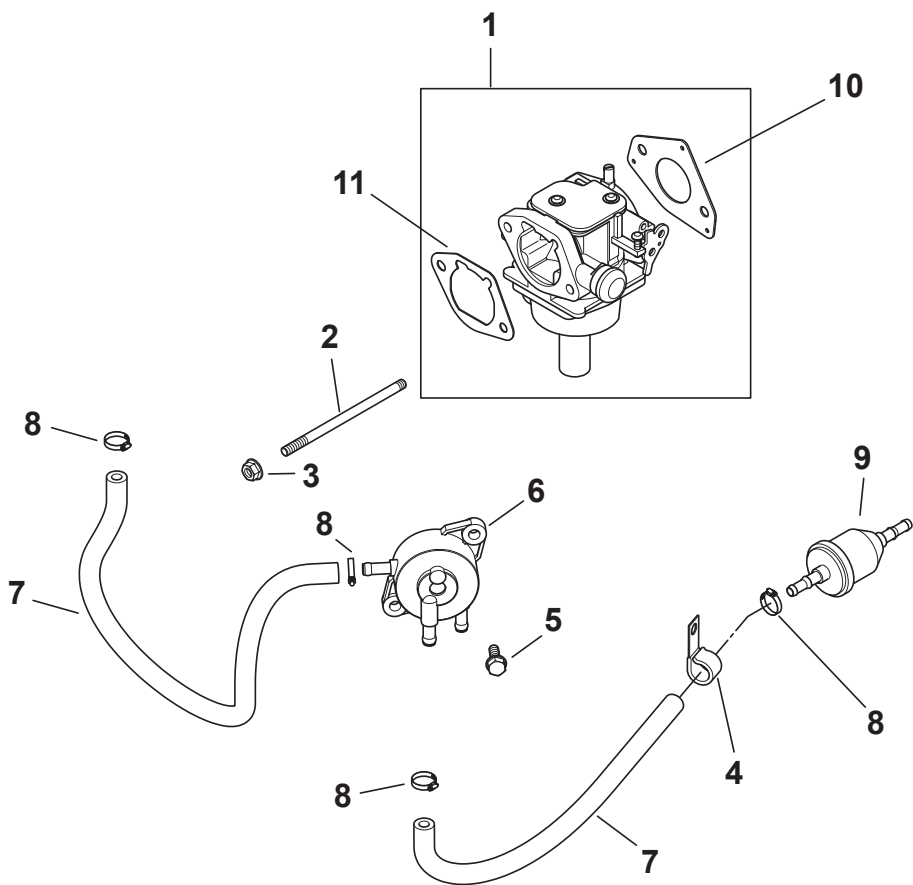
Ref.	Part-Number	Description
1	KH-24-089-03	Choke Return Spring
2	KH-24-112-27-S	Spacer
3	KH-32-126-04-S	Control Bracket
4	KH-24-468-01	Flat Washer, 5.5mm
5	KH-25-086-151-S	Screw, M5 x 0.8 x 25mm
6	KH-32-089-03-S	Speed Control Spring
7	KH-32-090-07-S	Governor Spring Lever
8	KH-32-090-08-S	Speed Control Lever
9	KH-32-090-09-S	Speed Setting Lever
10	KH-32-090-12-S	Choke Lever
11	KH-41-468-03	Spring Washer, 1/4
12	KH-M-545016-S	Flange Screw, M5 x .8 x 16
13	KH-M-547050-S	Lock Nut, M5 x 8

Ref.	Part-Number	Description
14	KH-M-645016-S	Flange Screw, M6 x 1.0 x 16
15	KH-24-211-03-S	Bolt, M6 x 1.0 x 25
16	KH-24-090-51-S	Governor Lever
17	KH-M-641060-S	Flange Nut, M6 x 1.0
18	KH-12-237-01	Cable Clamp
19	KH-24-086-43-S	Screw, M5 x .8 x 16
20	KH-24-089-01	Linkage Spring
21	KH-24-079-22-S	Choke Linkage
22	KH-24-089-55-S	Governor Spring
23	KH-24-089-25-S	Governor Spring
24	KH-24-079-04	Throttle Linkage
25	KH-25-158-08	Linkage Retaining Bushing
26	KH-25-158-11	Throttle Linkage Bushing

Kohler SV725 Air Intake/Filtration

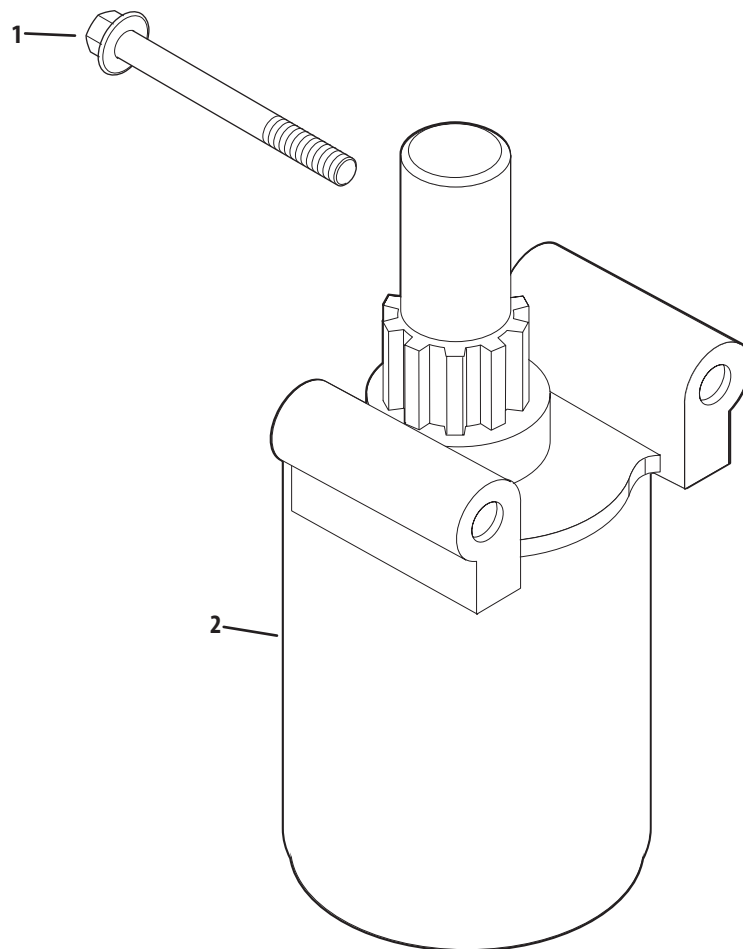


Ref.	Part Number	Description
1	KH-24-041-14	Air Cleaner Base Gasket
2	KH-32-344-02-S	Air Cleaner Element Latch
3	KH-32-883-03-S1	Air Filter Element
4	KH-24-164-91-S	Intake Manifold Kit
5	KH-M-651040-S	Screw, M6 x 1.0 x 40
6	KH-25-139-60-S	Pipe Plug, 1/8
7	KH-24-041-52-S	Carburetor Gasket
8	KH-24-153-27-S	O-Ring, Intake Port
9	KH-32-094-08-S	Air Cleaner Base
10	KH-25-326-08-S	Evaporative Hose, 20"
11	KH-25-173-33-S	Masking Cap
12	KH-25-155-51-S	Evaporative Connector

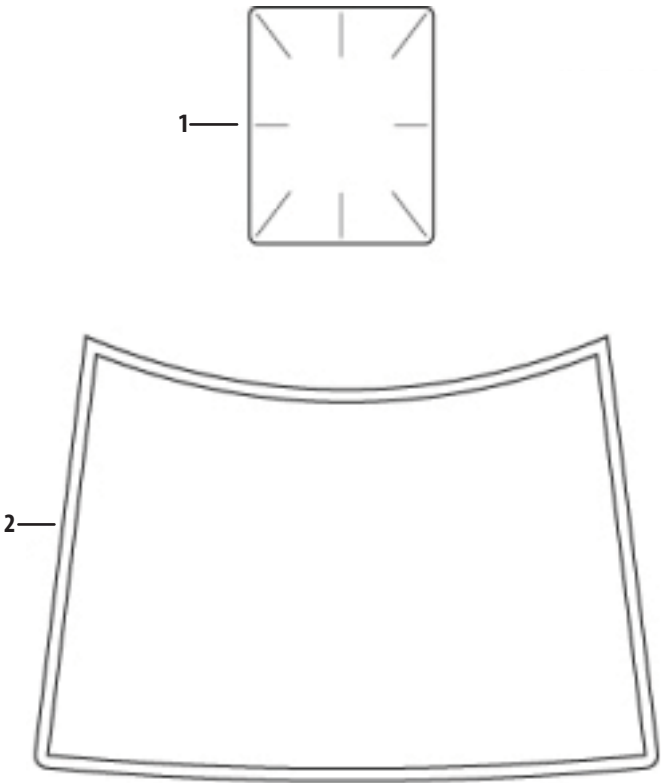


Ref.	Part-Number	Description
1	KH-32-853-25-S	Carburetor Kit
2	KH-M-629105-S	Stud, M6 x 1.0 x 106
3	KH-M-641060-S	Flange Nut, M6 x 1.0
4	KH-47-154-01-S	Cable Clip
5	KH-24-086-12	Screw, M6 x 1.7 x 18
6	KH-24-393-16	Fuel Pump
7	KH-25-111-34-S	Fuel Line
8	KH-25-237-31-S	Hose Clamp, 1/2
9	KH-25-050-22-S1	Fuel Filter
10	KH-24-041-52-S	Carburetor Gasket
11	KH-24-041-14	Air Cleaner Base Gasket

Kohler SV725 Starting System



Ref.	Part Number	Description
1	KH-32-098-03-S	Starter Assembly
2	KH-M-851080-S	Flange Screw, M8 x 1.25 x 80



Ref.	Part Number	Description
1	KH-25-113-39-S	Clear Laminate Decal
2	KH-32-113-39-S	Decal, 24 HP



To order replacement parts, call a Customer Support Representative at (800) 965-4CUB.
Locate your nearest Cub Cadet dealer at (877) 282-8684
or visit www.cubcadet.com to find the nearest Cub Cadet dealer in your area.

CUB CADET LLC, P.O. BOX 361131 CLEVELAND, OHIO 44136-0019
