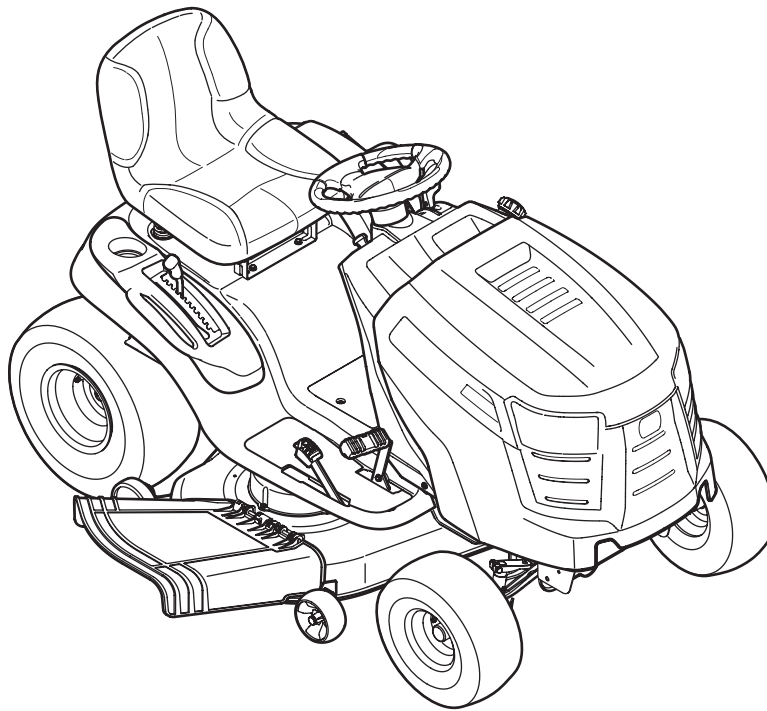

Cub Cadet[®]

ILLUSTRATED PARTS MANUAL



Hydrostatic Lawn Tractor — LTX1046VT & LTX1050VT

CUB CADET LLC, P.O. BOX 361131 CLEVELAND, OHIO 44136-0019

To The Owner

Thank you for purchasing an Cub Cadet Lawn Tractor. It was carefully engineered to provide excellent performance when properly operated and maintained.

All information in this manual is relative to the most recent product information available at the time of printing. Please be aware that this Illustrated Part's Manual may cover a range of product specifications for various models.

Components listed and/or illustrated in this manual may not be applicable to all models. We reserve the right to change product specifications, designs and equipment without notice and without incurring obligation.

Throughout this manual, all references to *right* (RH) and *left* (LH) are observed from the operating position.

Table of Contents

| | | | |
|--|-------|--|----|
| Axle, Front | 4 | Hood | 10 |
| Battery | 6 | Deck Lift Handle/Linkage | 8 |
| Head Lamps | 10 | Labels | 22 |
| Mower Deck, 46-inch | 14 | Meter, Systems Indicator | 10 |
| Mower Deck, 50-inch | 16 | Muffler | 21 |
| Pedal Controls | 13 | PTO Lever | 6 |
| Dash Panel | 10 | Seat | 8 |
| Drive System | 12 | Solenoid | 6 |
| Electrical Schematic | 24 | Steering | 4 |
| Engine Accessories | 21 | Switches, Interlock | 6 |
| Engine, B&S 44L777/44M777 | 25-34 | Throttle Control | 10 |
| Fender | 8 | Transmission, Hydrostatic | 18 |
| Frame | 6 | Wheels, Front & Rear | 3 |
| Fuel Tank | 10 | | |

Record Product Information

To ease in ordering replacement parts, please locate the model plate on the equipment and record the information in the provided area to the right. You can locate the model plate by looking beneath the seat.

MODEL NUMBER

| | | | | | | | | | | |
|----------------------|----------------------|----------------------|----------------------|----------------------|----------------------|----------------------|----------------------|----------------------|----------------------|----------------------|
| <input type="text"/> | <input type="text"/> | <input type="text"/> | <input type="text"/> | <input type="text"/> | <input type="text"/> | <input type="text"/> | <input type="text"/> | <input type="text"/> | <input type="text"/> | <input type="text"/> |
|----------------------|----------------------|----------------------|----------------------|----------------------|----------------------|----------------------|----------------------|----------------------|----------------------|----------------------|

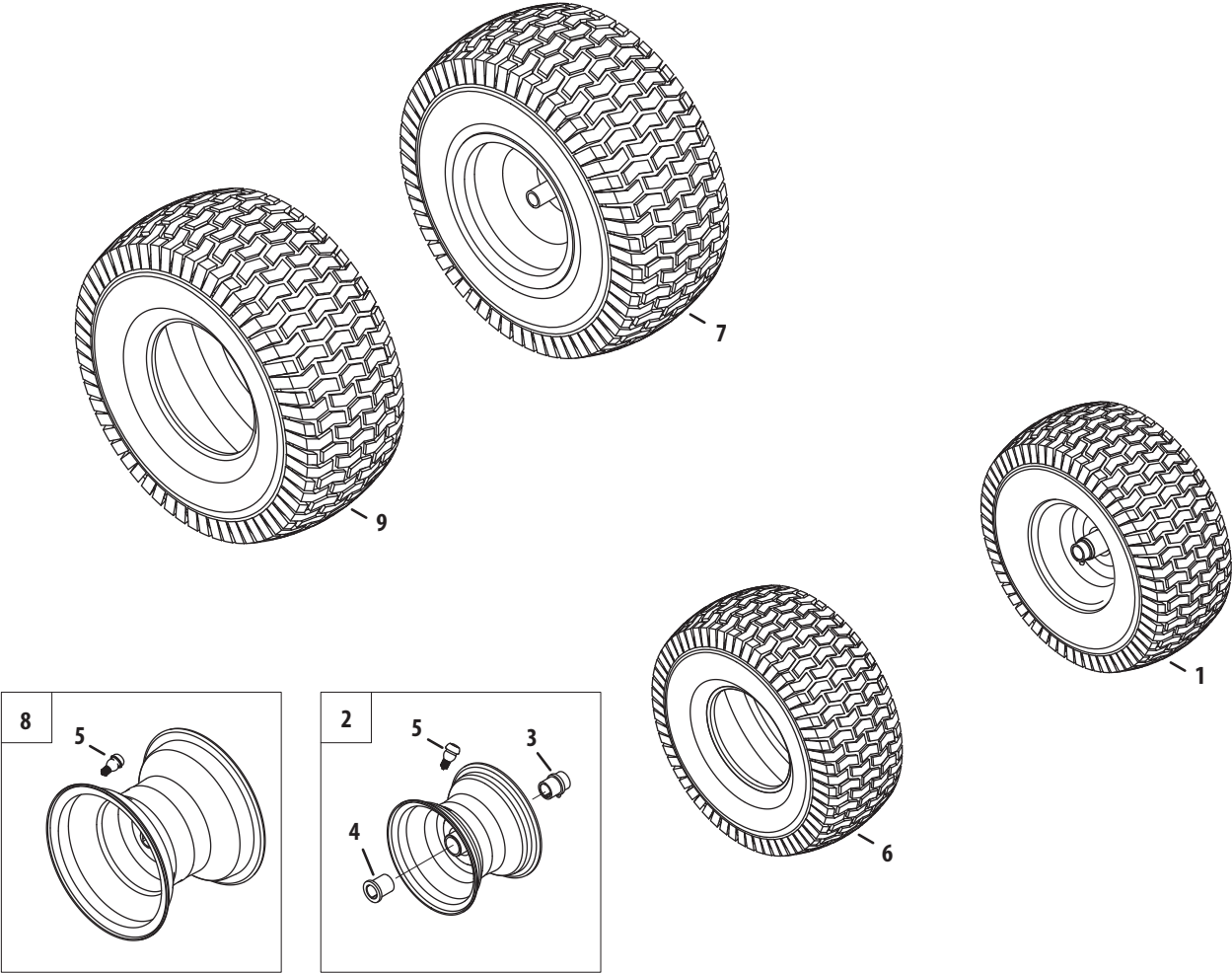
SERIAL NUMBER

| | | | | | | | | | | |
|----------------------|----------------------|----------------------|----------------------|----------------------|----------------------|----------------------|----------------------|----------------------|----------------------|----------------------|
| <input type="text"/> | <input type="text"/> | <input type="text"/> | <input type="text"/> | <input type="text"/> | <input type="text"/> | <input type="text"/> | <input type="text"/> | <input type="text"/> | <input type="text"/> | <input type="text"/> |
|----------------------|----------------------|----------------------|----------------------|----------------------|----------------------|----------------------|----------------------|----------------------|----------------------|----------------------|

Painted Parts

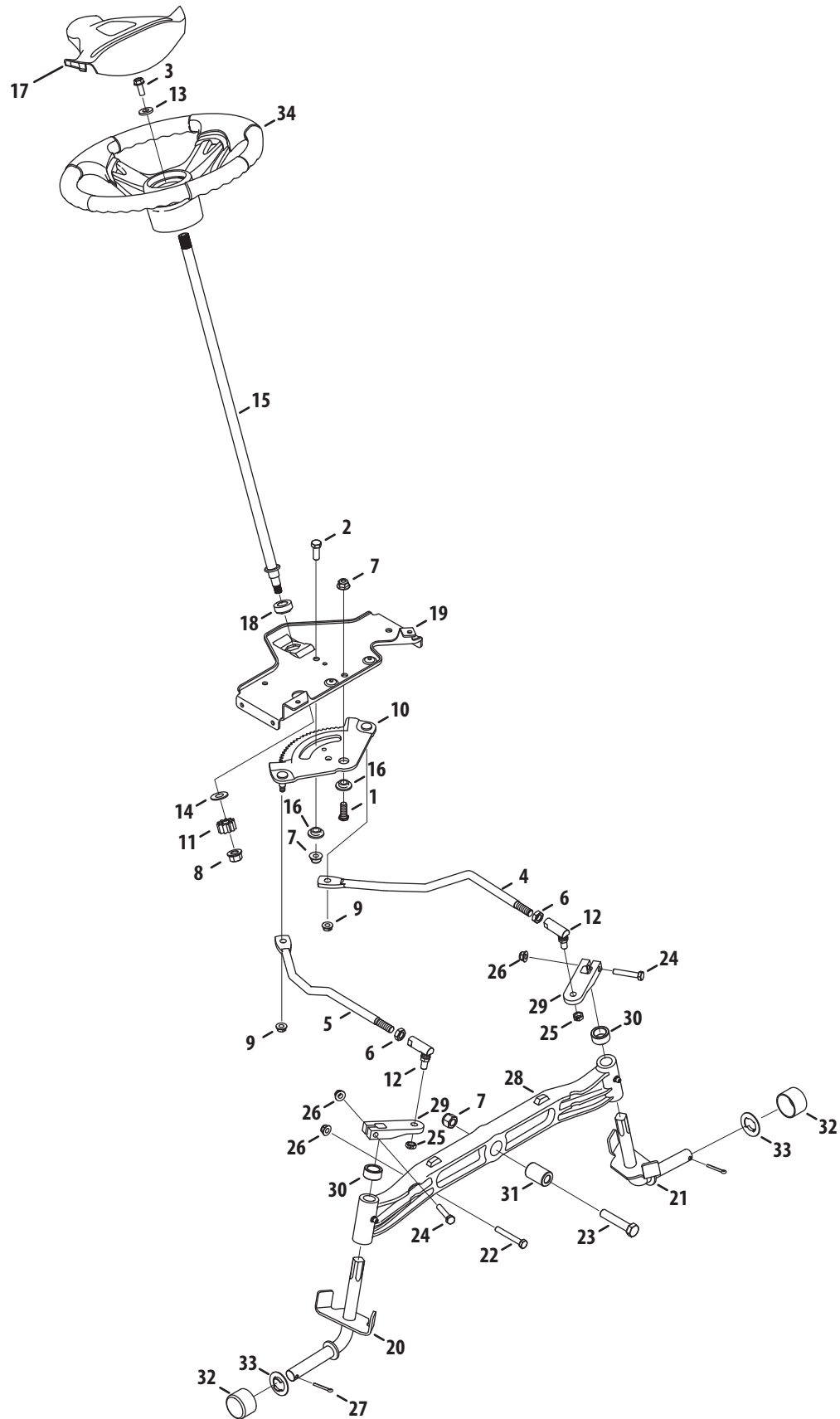
When ordering painted service parts, a four digit color suffix must be added to the part number (e.g. 783-XXXX-0637). Please refer to the table below for current color codes:

| | | | |
|------|--------------------|------|-----------------------------------|
| 0637 | Black | 0685 | Blue (Cub Cadet) |
| 4021 | Yellow (Cub Cadet) | 0691 | Black Jack (Cub Cadet Commercial) |
| 0499 | Beige (Cub Cadet) | | |



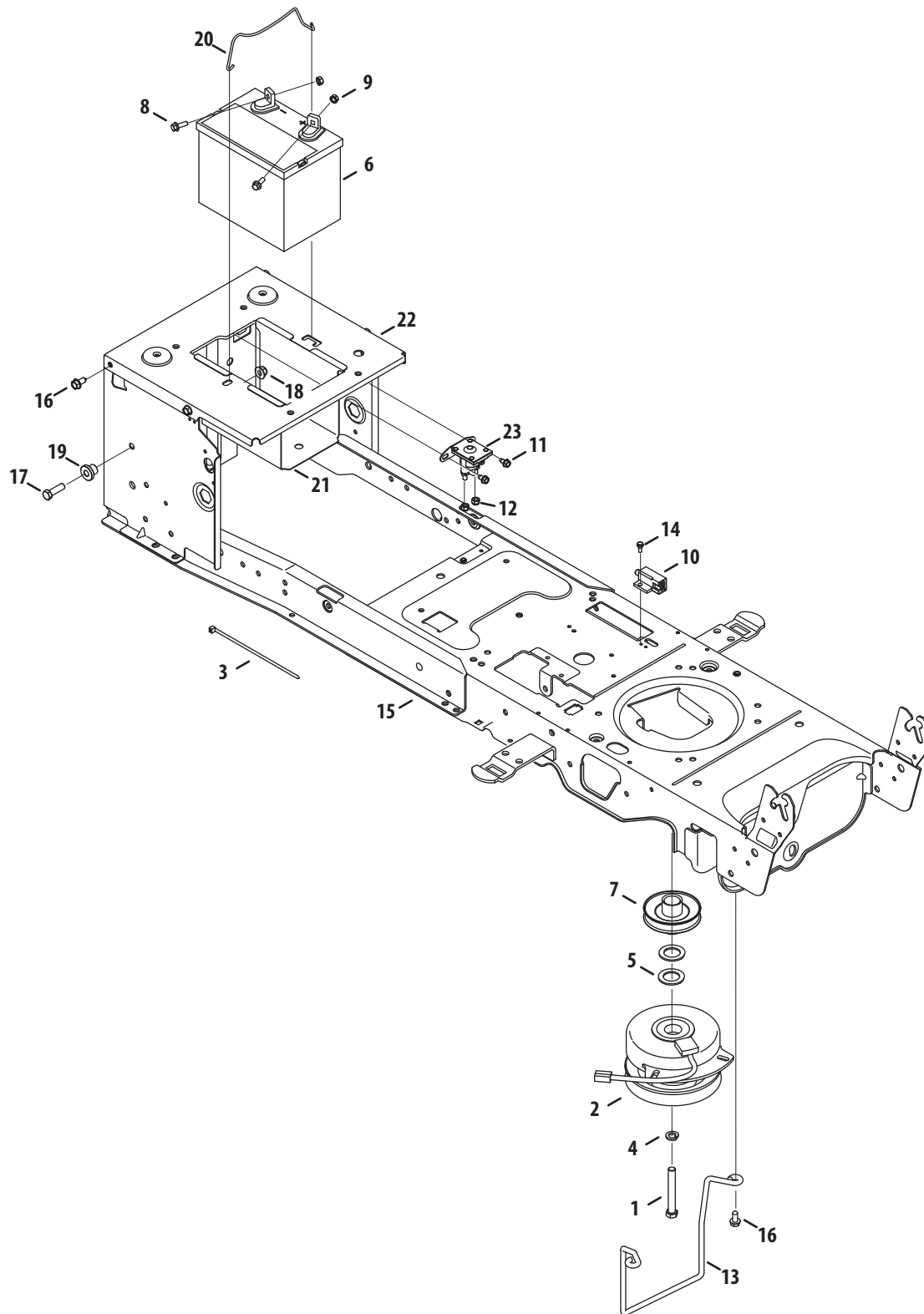
| Ref. | Part Number | Description |
|------|---------------|--|
| 1. | — | Wheel Ass'y, Complete, 15 x 6 x 6 |
| 2. | 634-04405 | Rim Ass'y, 6.0 x 4.5, Plastic Bearings |
| 3. | 741-0990B | Bearing, Flange, .760 ID w/ Fitting |
| 4. | 741-0516B | Bearing, Flange, .760 x 1.00 x 1.20 |
| 5. | 934-0255 | Valve, Tubeless Air |
| 6. | 734-1731-0901 | Tire, 15 x 6 x 6 Sq Shoulder |
| 7. | 634-0177-0931 | Wheel, Complete, 20 x 10 x 8 |
| 8. | 634-04369 | Rim Ass'y, 8.0 x 7.0 x .750 ID |
| 9. | 734-1730-0901 | Tire, 20 x 8 x 8 Sq Shoulder |

Steering



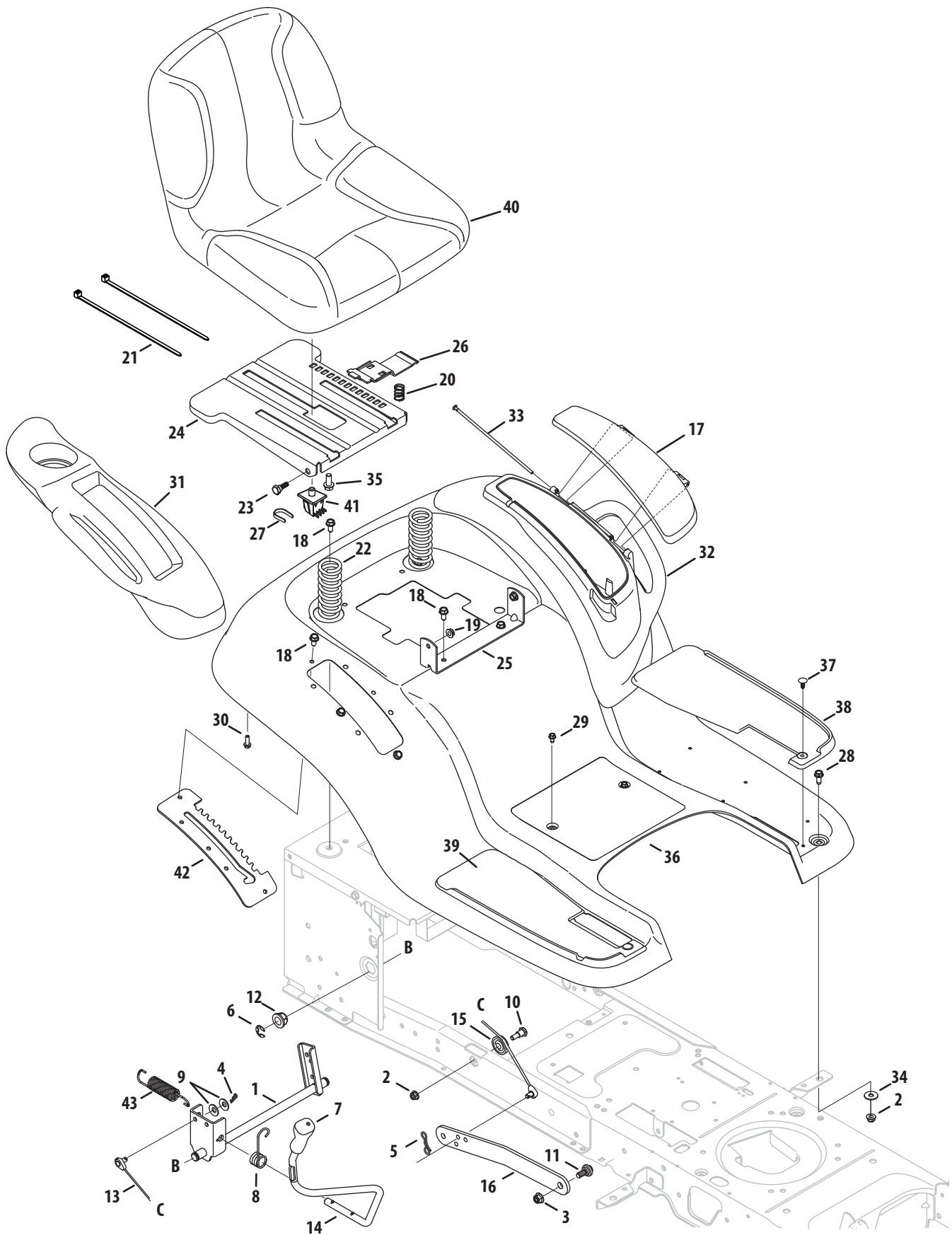
| Ref. | Part Number | Description |
|------|-------------|---------------------------------------|
| 1. | 710-04095 | Hex Screw, 3/8-16, 1.00, Gr5, Spec |
| 2. | 710-0514 | Hex Screw, 3/8-16, 1.00, Gr5, Std |
| 3. | 710-0650 | Hex Screw, 5/16-18, .875, Gr5, Lock |
| 4. | 711-04998 | Link, Drag LH |
| 5. | 711-04999 | Link, Drag RH |
| 6. | 912-0240 | Nut, Jam, 7/16-20, Gr2 |
| 7. | 712-04065 | Nut, Flange Lock, 3/8-16, Grf, |
| 8. | 712-0459 | Nut, Flange Lock, 7/16-20, Grb, Lock |
| 9. | 712-3004A | Nut, Flange Lock, 5/16-18, Gr5, Sd Lk |
| 10. | 717-1550F | Gear, Steering, 11/90 Ratio |
| 11. | 717-1554 | Gear, Pinion, Steering |
| 12. | 923-0448A | Ball Joint, 7/16-20, Lock |
| 13. | 936-3004 | Washer, Flat, .406 x .875 x .105 |
| 14. | 736-3084 | Washer, Flat, .51 x 1.12 x .06 |
| 15. | 738-04262 | Shaft, Steering, .625 OD x 25, Cub |
| 16. | 738-04363 | Spacer, Shoulder, .385x 1.25 x .3025 |
| 17. | 731-04532B | Cover, Steering Wheel, Cub Cadet |
| 18. | 741-04237B | Bearing, Flange, Hex 5/8 Pm |
| 19. | 783-06043 | Bracket, Support, Steering |
| 20. | 638-04022 | Axle Ass'y, RH .750 Dia. |
| 21. | 638-04028 | Axle Ass'y, LH .750 Dia. |
| 22. | 710-0395 | Hex Screw, 5/16-18, 2.25, Gr5, Std |
| 23. | 710-0859 | Hex Screw, 3/8-16, 2.50, Gr5, Std |
| 24. | 710-3180 | Hex Screw, 5/16-18, 1.75, Gr5, Std |
| 25. | 912-0214 | Nut, Hex Lock, 3/8-24, Grb |
| 26. | 712-04063 | Nut, Flange Lock, 5/16-18, Grf |
| 27. | 714-0162 | Pin, Cotter, 5/32, 1.25 |
| 28. | 719-04413A | Axle, Pivot Bar, Cast |
| 29. | 748-04065 | Steering, Block |
| 30. | 748-04068 | Spacer, .71 ID x .125 OD x .56 |
| 31. | 750-05280 | Spacer, .385 x 1.00 x 1.5075 |
| 32. | 731-05674 | Cap, Bumper |
| 33. | 736-04228A | Washer, Flat, .350 x 1.559 x .062 |
| 34. | 631-04008A | Wheel, Steering, 3 Spoke, Softgrip |

Frame, Electrical and PTO



| Ref. | Part Number | Description |
|------|-------------|-------------------------------------|
| 1. | 710-04379A | Hex Screw, 7/16-20, 3.50, Gr5, Lock |
| 2. | 917-04552 | Clutch, Electric PTO (46") |
| | 917-04174A | Clutch, Electric PTO (50") |
| 3. | 725-0157 | Cable, Tie, 3/16 X .05 X 7.4 |
| 4. | 736-0171 | Washer, Lock, 7/16 , Regular Duty |
| 5. | 736-0277 | Washer, Flat, 1.031 X1.620 X.095 |
| 6. | 925-1707D | Battery |
| 7. | 756-0978B | Engine Pulley, Electric PTO |
| 8. | 710-04666 | Hex Flange Screw, 1/4-20, .75, Gr5 |
| 9. | 712-0271 | Nut, Sems, 1/4-20 |
| 10. | 725-04363 | Switch, Interlock |
| 11. | 710-0653 | Screw, Self-tapping, 1/4-20, 0.375 |
| 12. | 712-04064 | Nut, Flange Lock, 1/4-20, Nylon |
| 13. | 747-05171 | Rod, Keeper (46") |
| | 747-05195 | Rod, Keeper (50") |
| 14. | 738-04237A | Screw, Shoulder, #10-32, .50 |
| 15. | 683-04469A | Frame Assembly, Lower |
| 16. | 710-04484 | Screw, Self-tapping, 5/16-18, .750 |
| 17. | 710-3005 | Hex Screw, 3/8-16, 1.25, Gr5, Std |
| 18. | 712-04065 | Nut, Flange Lock, 3/8-16, Nylon |
| 19. | 738-04058 | Spacer, Shoulder, .38 X 1.0 X .70 |
| 20. | 747-04121A | Rod, Battery |
| 21. | 783-0349 | Tray, Battery |
| 22. | 783-06089 | Bracket, Frame, Seat |
| 23. | 725-04439 | Solenoid, 12V, 100 Amp, 4 term |
| — | 925-04093 | Harness Assembly, Main |

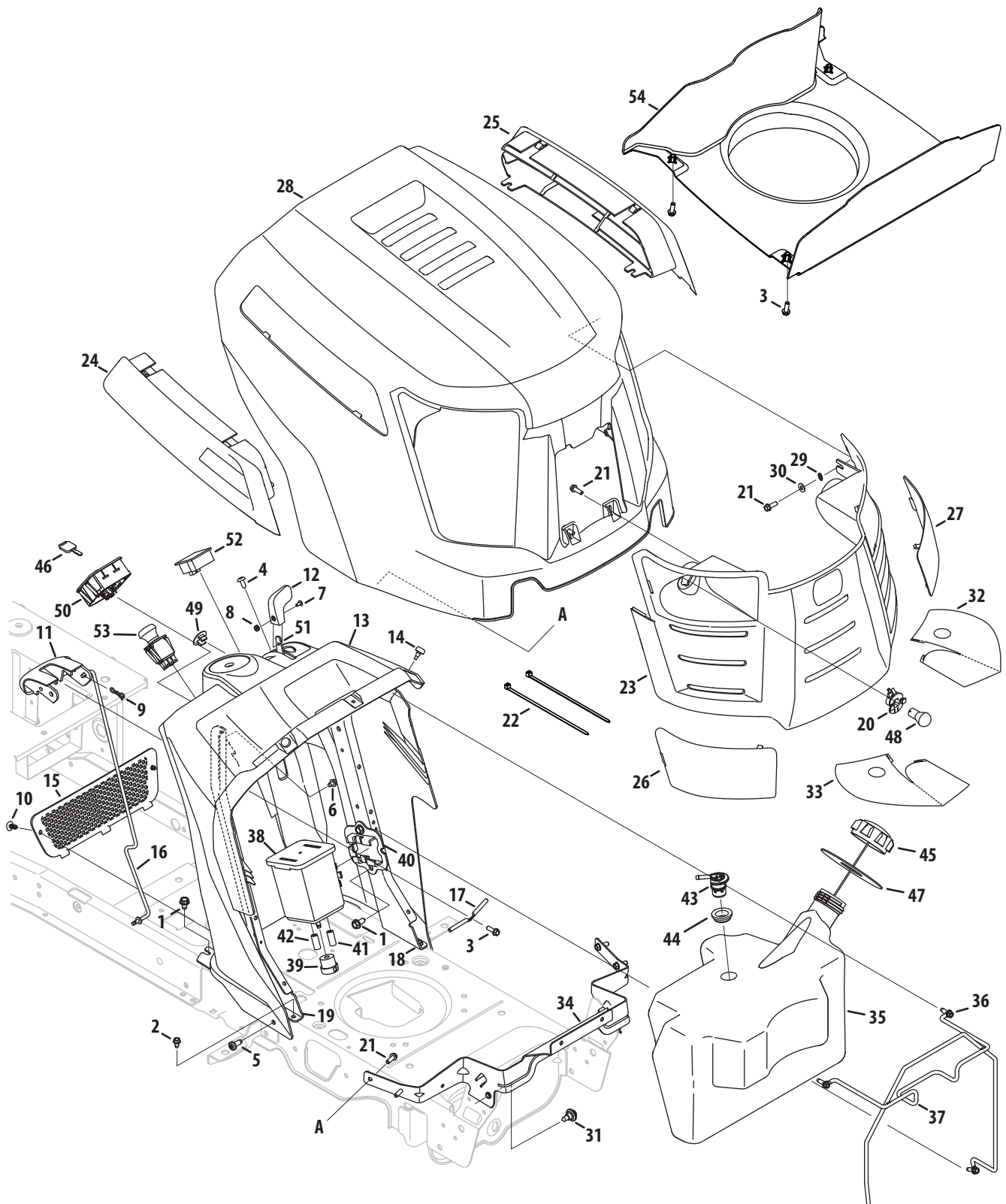
Seat, Fender and Lift



Seat, Fender and Lift

| Ref. | Part Number | Description | Ref. | Part Number | Description |
|------|-------------|---------------------------------------|------|-------------|---------------------------------------|
| 1. | 683-04223 | Shaft Ass'y, Lift | 23. | 938-0296 | Screw, Shoulder, .437 x .268, 5/16-18 |
| 2. | 712-04063 | Nut, Flange Lock, 5/16-18, Grf | 24. | 783-06049 | Bracket, Mounting, Seat |
| 3. | 712-04065 | Nut, Flange Lock, 3/8-16, Grf | 25. | 783-06088 | Bracket, Pivot, Seat |
| 4. | 914-0104 | Pin, Cotter, .072 Dia. x 1.13 | 26. | 783-06050 | Lever, Seat Adjustment |
| 5. | 714-04040 | Pin, Cotter, Bow-Tie 72 | 27. | 783-06448 | Clip, Retaining, Switch |
| 6. | 716-0106A | Ring, E Type, .625 Dia. Shaft | 28. | 710-1260A | Hex Screw, 5/16-18, .75, Gr5, Std |
| 7. | 720-04139 | Grip, Handle, Cub, .50 ID | 29. | 710-0599 | Screw, Self-tapping, 1/4-20, 0.500, |
| 8. | 732-0874 | Spring, Torsion | 30. | 710-0895 | Screw, HL, 1/4-15, 0.750, |
| 9. | 736-0105 | Washer, Spring, .401 x .870 x .063 | 31. | 731-06700 | Cover, Fender, RH |
| 10. | 738-0138A | Screw, Shoulder, .437 x .470, 5/16-18 | 32. | 731-06676 | Cover, Fender, LH |
| 11. | 938-0380 | Bolt, Shoulder, .50, 3/8-16 | 33. | 747-05039 | Pin, Door |
| 12. | 941-0225 | Bearing, Hex Flange | 34. | 736-3078 | Washer, Flat .344 x 1.00 x .063 |
| 13. | 746-0968 | Cable, Lift, 16.16 | 35. | 710-04482 | Hex Flange Screw, 3/8/16, .875, Gr5 |
| 14. | 747-04962A | Handle, Lift, | 36. | 783-06118 | Fender, Cub Hydro |
| 15. | 756-04331 | Pulley, Roller, Cable | 37. | 726-3046 | Clip, Ratchet, .250 Dia |
| 16. | 783-05546A | Link, Lift | 38. | 735-04137 | Pad, Foot, LH |
| 17. | 731-06584 | Door, Cover, Fender | 39. | 735-04139 | Pad, Foot, RH |
| 18. | 710-04484 | Screw, Self-tapping, 5/16-18, .750, | 40. | 757-04131 | Seat, High Back Cloth, Cub |
| 19. | 712-3004A | Nut, Flange Lock, 5/16-18, Gr5, Sd Lk | 41. | 925-05013 | Switch, Seat |
| 20. | 732-04563 | Spring, Compr', .68 x 1.065 x .055 | 42. | 783-06181 | Bracket, Lift |
| 21. | 725-0157 | Cable, Tie, 3/16 x .05 x 7.4 | 43. | 732-0934 | Spring, Extension, 1.15 OD x 5.99 |
| 22. | 732-04561 | Spring, Compr's, 1.71 x 3.735 x .238 | | | |

Fuel Tank, Hood and Dash

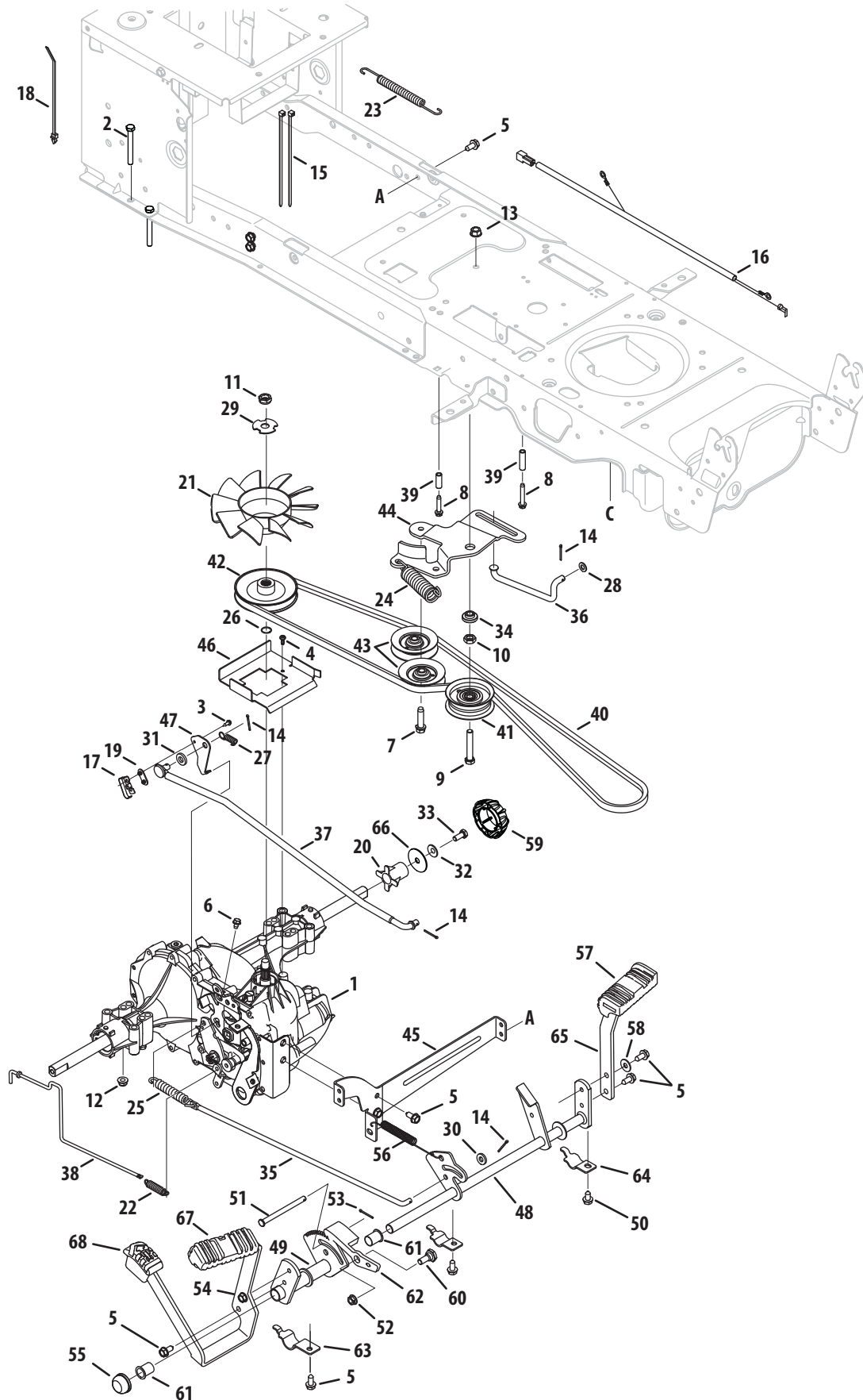


Fuel Tank, Hood and Dash

| Ref. | Part Number | Description |
|------|-------------|--------------------------------------|
| 1. | 710-04484 | Screw, Self-tapping, 5/16-18, .750 |
| 2. | 710-0599 | Screw, Self-tapping, 1/4-20, 0.500 |
| 3. | 710-0895 | Screw, HL, 1/4-15, 0.750 |
| 4. | 710-1017 | Screw, Ab, 1/4-14, 0.625, |
| 5. | 710-1611B | Screw, Self-tapping, 5/16-18, 0.750, |
| 6. | 710-1652 | Screw, Self-tapping, 1/4-20 x .625 |
| 7. | 710-3217 | Screw, Mach, #8-32, 0.375 |
| 8. | 712-0142 | Nut, Hex, #8-32 |
| 9. | 714-04040 | Pin, Cotter, Bow-Tie 72 |
| 10. | 726-3046 | Clip, Ratchet, .250 Dia |
| 11. | 731-05447A | Lever, Dash, Cruise/Brake |
| 12. | 731-06593 | Knob, Throttle |
| 13. | 931-06666 | Dash Panel, A-Style, Man PTO |
| 14. | 735-0271A | Bumper, .62 Dia X .3 |
| 15. | 735-04076 | Net |
| 16. | 747-05009A | Rod, Control, Latch Cub |
| 17. | 747-1196 | Rod, Lever, Bent |
| 18. | 783-06098 | Support, Dash, Plate LH |
| 19. | 783-06099 | Support, Dash, Plate RH |
| 20. | 925-1649 | Socket, Lamp |
| 21. | 710-05108 | Screw, 1/4 Dia, .750 |
| 22. | 926-0154 | Tie, Cable, Push Mount 7.5 Lg |
| 23. | 931-04322 | Grille Ass'y (Incl. 26, 27, 32 & 33) |
| 24. | 931-06542 | Scoop, Hood, RH A-Style |
| 25. | 931-06543 | Scoop, Hood, LH A-Style |
| 26. | 931-06558 | Lens, Hood, RH A-Style |
| 27. | 931-06559 | Lens, Hood, LH A-Style |
| 28. | 931-06634 | Hood, A-Style |
| 29. | 936-0222 | Washer, Lock, 1/4, External |

| Ref. | Part Number | Description |
|------|--------------|---------------------------------------|
| 30. | 936-3020 | Washer, Flat, .271, .630, .065 |
| 31. | 738-04091A | Screw, Shoulder, .43x.29, 5/16-18 |
| 32. | 777X44055 | Reflector, Cub A Style, LH |
| 33. | 777X44056 | Reflector, Cub A Style, RH |
| 34. | 783-06114 | Bracket, Pivot, Hood A-Style |
| 35. | 751-10879 | Tank, Fuel, 3.75 Gal. |
| | 751-10906 | Tank, Fuel, 3.30 Gal. (CA) |
| 36. | 710-1652 | Screw, Self-tapping, 1/4-20, .625 |
| | 710-0642 | Screw, Self-tapping, 1/4-20, .75 (CA) |
| 37. | 747-05040A | Rod, Support, Fuel Tank |
| 38. | 951-10589 | Canister, Carbon, 5 Gallon (CA) |
| 39. | 951-10590 | Filter, Vent, Canister (CA) |
| 40. | 951-10610 | Bracket, Adapter, Canister (CA) |
| 41. | 751-10749 | Hose, Fuel, Low Perm, 3/16 Wht (CA) |
| 42. | 751-10750-28 | Hose, Fuel, Low Perm, 7/32 Yel (CA) |
| 43. | 751-10441 | Valve, Rollover Grommet (CA) |
| 44. | 735-04081 | Grommet, Rubber, 23.0 ID (CA) |
| 45. | 751-0603A | Cap, Fuel |
| | 951-10947 | Cap, Fuel (CA) |
| 46. | 925-2054A | Key, Ignition |
| 47. | 735-04170 | Gasket, Fuel Tank |
| 48. | 925-0963 | Lamp, 12v |
| 49. | 731-1999 | Plug, Choke |
| 50. | 925-04227B | Module Switch, Ignition |
| 51. | 946-04617 | Cable, Throttle/Choke, 28" |
| 52. | 925-04022B | Meter, Indicator |
| 53. | 725-04258 | Switch, Electric PTO, Yellow |
| 54. | 731-06936 | Plenum, A-Style, B&S Intek Twin |

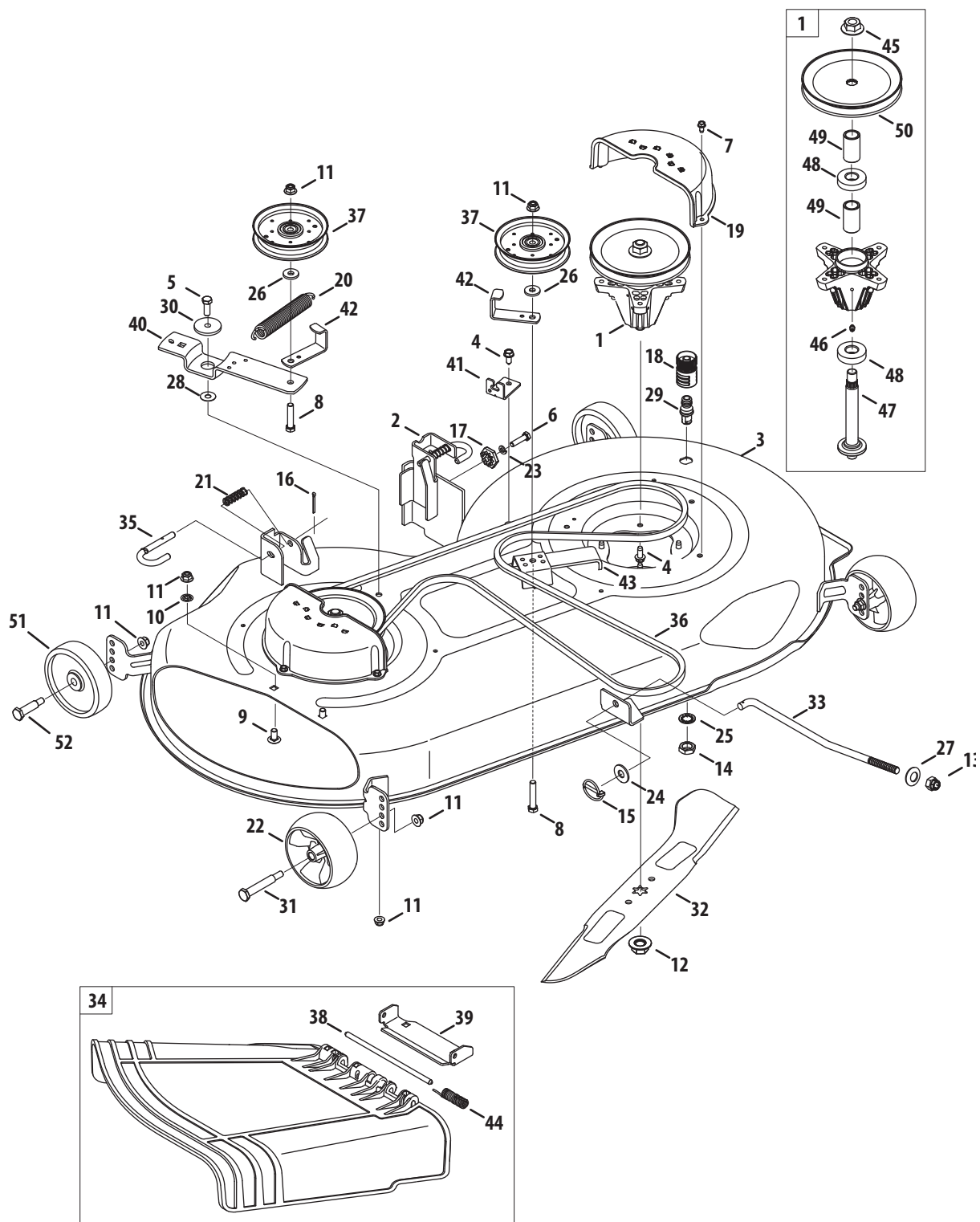
Drive System



| Ref. | Part Number | Description |
|------|-------------|---------------------------------------|
| 1. | 918-0319 | Transmission, Hydro-Gear 0510 |
| 2. | 710-0176 | Hex Screw, 5/16-18, 2.75, Gr5, Std |
| 3. | 710-0227 | Screw, #8-18, 0.500, |
| 4. | 710-0351 | Screw, #10-16, 0.500 |
| 5. | 710-04484 | Screw, Self-tapping, 5/16-18, .750 |
| 6. | 710-0653 | Screw, Self-tapping, 1/4-20, 0.375 |
| 7. | 710-1007 | Screw, Self-tapping, 3/8-16, 1.500 |
| 8. | 710-1325 | Screw, Self-tapping, 1/4-20, 1.625 |
| 9. | 710-3011 | Hex Screw, 3/8-16, 2.25, Gr5 |
| 10. | 912-0240 | Nut, Jam, 7/16-20, Gr2 |
| 11. | 912-0346 | Nut, Jam Lock, 1/2-20, Gr5, Nylon |
| 12. | 712-04063 | Nut, Flange Lock, 5/16-18, Nylon |
| 13. | 912-0431 | Nut, Flange Lock, 3/8-16 |
| 14. | 914-0111 | Pin, Cotter, 3/32, 1.0 |
| 15. | 725-0157 | Cable, Tie, 3/16 x .05 x 7.4 |
| 16. | 725-04791A | Jumper Harness, Ground & Reverse |
| 17. | 725-1644 | Switch, Spring, Short |
| 18. | 926-0154 | Tie, Cable, Push Mount 7.5 |
| 19. | 926-0320 | Plate, Insulator Nut |
| 20. | 731-05299A | Sleeve, .765 Id x 1.500 |
| 21. | 731-06098 | Fan, Hydro |
| 22. | 932-0209 | Spring, Extension, .48 Od x 2.03 |
| 23. | 732-04606 | Spring, Extension, .500 Dia x 12.6 |
| 24. | 732-04624 | Spring, Extension, 1.00 Dia x 4.75 |
| 25. | 732-0716D | Spring, Extension, .59 Od x 4.00 |
| 26. | 732-0729 | Ring, Wire |
| 27. | 732-3118 | Spring, Extension, .375 Od x 1.44 |
| 28. | 936-0264 | Washer, Flat, .330 x .630 x .0635 |
| 29. | 736-04263 | Washer, Lock, Transmission Hydro |
| 30. | 936-3008 | Washer, Flat, .344 x .750 x .120 |
| 31. | 736-3010 | Washer, Flat, .407x.812x.135, Ht |
| 32. | 736-0242 | Washer, Bell, .340 x .872 x .060 |
| 33. | 710-0627 | Hex Screw, 5/16-24, .750, Gr5, Lock |
| 34. | 738-04420 | Spacer, Shoulder, 1.375 x .380 x .183 |

| Ref. | Part Number | Description |
|------|-------------|--------------------------------------|
| 35. | 747-04139 | Rod, Brake, LT Hydro |
| 36. | 747-04957A | Rod, Transmission, Bypass |
| 37. | 747-04979 | Rod, Control, Hydro |
| 38. | 747-04991 | Rod, Hydro Bypass |
| 39. | 750-04456 | Spacer, .260 x .372 x 1.420 |
| 40. | 954-04207 | Belt, V-Type |
| 41. | 756-04224 | Pulley, Idler, Flat 2.75 OD |
| 42. | 756-04308 | Pulley, Input, 4.13 Dia |
| 43. | 756-04325 | Pulley, Idler, V-Type x 3.06 |
| 44. | 783-06027A | Bracket, Idler, Center Double |
| 45. | 783-06133 | Bracket, Mount, Hydro |
| 46. | 783-06260 | Bracket, Support, Belt Disengage |
| 47. | 783-1019B | Bracket, Actuator, Switch |
| 48. | 647-04152A | Control Assembly, Brake |
| 49. | 683-04537 | Bracket Assembly, Pedal, Hydro |
| 50. | 710-0604A | Screw, Self-tapping, 5/16-18, 0.625, |
| 51. | 711-05068 | Pin, Clevis, 5/16 x 3.985 |
| 52. | 712-04065 | Nut, Flange Lock, 3/8-16, Nylon |
| 53. | 714-04040 | Pin, Cotter, Bow-Tie 72 |
| 54. | 783-06059 | Bracket, Pedal, Hydro |
| 55. | 726-0214 | Cap, Push 5/8 |
| 56. | 732-04587 | Spring, Extension, .63 Dia x 4.95 |
| 57. | 735-04136 | Pad, Pedal, Brake |
| 58. | 736-0242 | Washer, Bell, .340 x .872 x .060 |
| 59. | 731-2290A | Cap, Hub |
| 60. | 938-0380 | Bolt, Shoulder, .500 x .270, 3/8-16 |
| 61. | 741-0495 | Bearing, Flange, .630 x .695 x .60 |
| 62. | 748-04203 | Latch, Cruise |
| 63. | 783-05914 | Bracket, Support, Pedal Strap |
| 64. | 783-05940 | Bracket, Support, Pedal Strap 5/8 |
| 65. | 783-06103A | Bracket, Pedal, Brake |
| 66. | 736-0430 | Washer, Flat, .350 x 1.59 x .062 |
| 67. | 735-04118A | Pad, Pedal, Forward |
| 68. | 735-04135 | Pad, Pedal, Reverse |

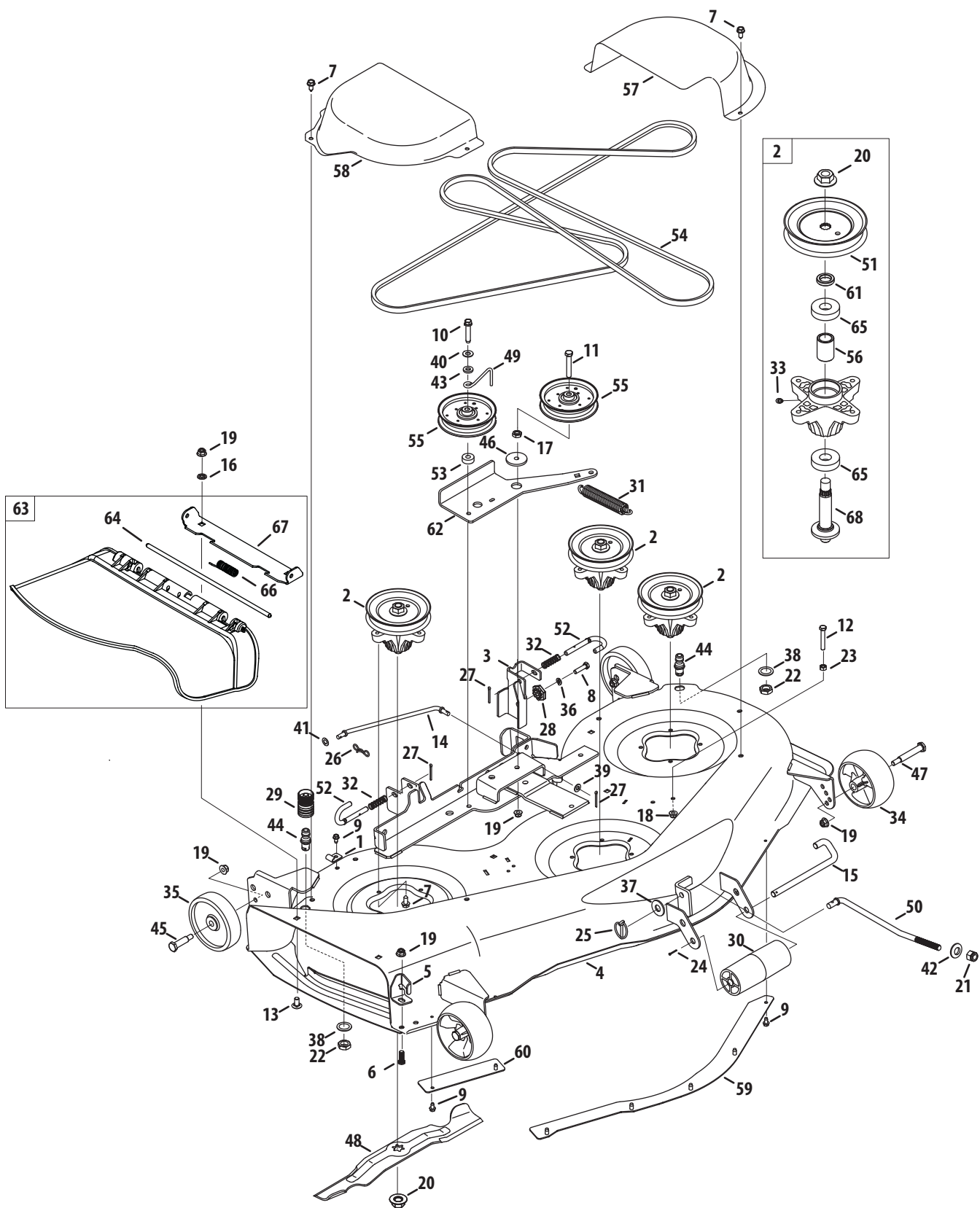
46-inch Deck



| Ref. | Part Number | Description |
|------|-------------|-------------------------------------|
| 1. | 918-04636A | Spindle Assembly, Pulley 6.93 Dia. |
| 2. | 683-0254B | Bracket Assembly, Deck, Hanger LH |
| 3. | 983-04578 | Deck Assembly, Offset, 46" |
| 4. | 710-04484 | Screw, Self-tapping, 5/16-18, .750, |
| 5. | 710-0514 | Hex Screw, 3/8-16, 1.00, Gr5, Std |
| 6. | 710-0528 | Hex Screw, 5/16-18, 1.25, Gr5, Std |
| 7. | 710-0599 | Screw, Self-tapping, 1/4-20, 0.500, |
| 8. | 710-3144 | Hex Screw, 3/8-16, 2.00, Gr5, Std |
| 9. | 710-3178 | Bolt, Carriage, 3/8-16, 0.75, Gr1 |
| 10. | 712-0229 | Nut, Push, 3/8 |
| 11. | 712-04065 | Nut, Flange Lock, 3/8-16, Nylon |
| 12. | 712-0417A | Nut, Flange, 5/8-18 |
| 13. | 712-04243 | Nut, 1/2-13 |
| 14. | 712-0641 | Nut, Hex, M16-1.5 Din 936 |
| 15. | 753-04070 | Pin, Lynch, .1875 |
| 16. | 914-0470 | Pin, Cotter, 1/8 X 1.25 |
| 17. | 917-04074 | Gear, Deck, Adj |
| 18. | 921-04041 | Adapter, Water |
| 19. | 731-06496 | Cover, Belt, Universal |
| 20. | 732-0459C | Spring, Extension, .94 Dia. X 6.74 |
| 21. | 732-04652 | Spring, Compression, .535 OD X 1.75 |
| 22. | 734-04155 | Wheel, Deck, 5.0 Dia. Ball |
| 23. | 936-0119 | Washer, Lock, 5/16, Regular Duty |
| 24. | 936-0179 | Washer, Flat, .531 X 1.25 X .100 |
| 25. | 736-0225 | Washer, Lock, 5/8, Int. Tooth |
| 26. | 736-0262 | Washer, Flat, .385 X .870 X .092 |

| Ref. | Part Number | Description |
|------|-------------|--------------------------------------|
| 27. | 736-0317 | Washer, Bell, .63 X 1.25 X .18 |
| 28. | 936-0344 | Washer, Flat, .385 X 1.0 X .030 |
| 29. | 737-04003D | Port, Water |
| 30. | 738-04162A | Spacer, Shoulder, .8840 X .190 |
| 31. | 938-3056 | Bolt, Shoulder, .496 X 2.50, 3/8-16 |
| 32. | 942-04244A | Blade, Cut, 23.25" 2-In-1, Cub |
| 33. | 747-04944A | Rod, Lift, Deck, Front, 13.7 |
| 34. | 631-04288 | Chute Assembly, 46" Deck |
| 35. | 747-1116 | Rod, Deck Release .375 Dia. |
| 36. | 954-04219 | Belt, V-Type, A Sec |
| 37. | 756-04129B | Pulley, Idler, 4.25" Dia. |
| 38. | 711-04847A | Pin, Hinge, 7.96 |
| 39. | 783-06074 | Bracket, Chute |
| 40. | 783-05946 | Bracket, Idler, Pivot |
| 41. | 783-06243 | Bracket, Cable, Deck Engage |
| 42. | 783-06368 | Bracket, Guard, Belt, 4.25 Pulley |
| 43. | 783-06643 | Bracket, Support, Stationary Idler |
| 44. | 732-04372 | Spring, Torsion, .44 I.D. X 2.0 |
| 45. | 712-0417A | Nut, Flange, 5/8-18 |
| 46. | 937-3000 | Lube Fitting, 3/16 |
| 47. | 738-1186A | Shaft, Spindle, 6.11 |
| 48. | 941-0919 | Bearing, Ball, .787 X 1.85 x.551 |
| 49. | 750-04936 | Spacer, .792 X 1.060 X 1.860 |
| 50. | 756-04356 | Pulley, Deck, 6.93 Dia. |
| 51. | 734-0973 | Wheel, Deck 5.0 x 1.38 |
| 52. | 938-0373 | Bolt, Shoulder, .496 x 1.525, 3/8-16 |

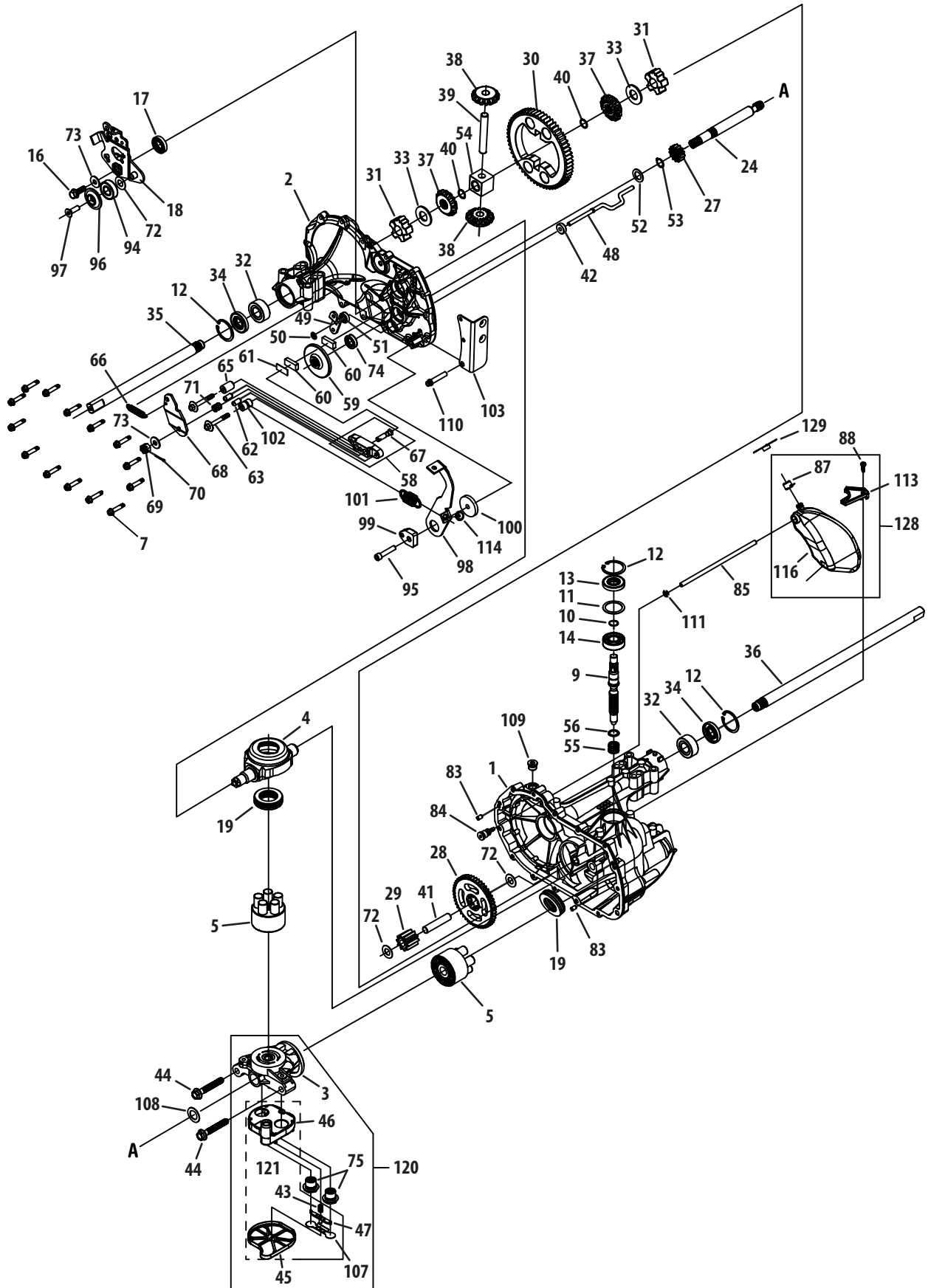
50-inch Deck



| Ref. | Part Number | Description |
|------|-------------|-------------------------------------|
| 1. | 96606 | Bracket, Hook, Retainer |
| 2. | 918-04825B | Spindle Assembly, Pulley, 5.3 Dia. |
| 3. | 683-0254B | Bracket Assembly, Deck, Hanger LH |
| 4. | 983-04561 | Deck Assembly, 50" |
| 5. | 703-3279 | Stop, Chute, Deflector |
| 6. | 710-04095 | Hex Screw, 3/8-16, 1.00, Gr5, Spec |
| 7. | 710-04484 | Screw, Self-tapping, 5/16-18, .750, |
| 8. | 710-0528 | Hex Screw, 5/16-18, 1.25, Gr5, Std |
| 9. | 710-0599 | Screw, Self-tapping, 1/4-20, 0.500 |
| 10. | 710-1008 | Screw, Self-tapping, 3/8-16, 1.875 |
| 11. | 710-3011 | Hex Screw, 3/8-16, 2.25, Gr5, Std |
| 12. | 710-3103 | Hex Screw, 5/16-18, 2.00, Gr5, Std |
| 13. | 710-3178 | Bolt, Carriage, 3/8-16, 0.75, Gr1 |
| 14. | 711-05078 | Rod, Support, Deck |
| 15. | 711-3314 | Roller Pin-1/2 Dia. x 7.31 |
| 16. | 712-0229 | Nut, Push, 3/8 |
| 17. | 912-0240 | Nut, Jam, 7/16-20, Gr2 |
| 18. | 712-04063 | Nut, Flange Lock, 5/16-18, Nylon |
| 19. | 712-04065 | Nut, Flange Lock, 3/8-16, Nylon |
| 20. | 712-0417A | Nut, Flange, 5/8-18 |
| 21. | 712-04243 | Nut, 1/2-13 |
| 22. | 912-0641 | Nut, Hex, M16-1.5 |
| 23. | 912-3010 | Nut, Hex, 5/16-18, Gr5 |
| 24. | 914-0111 | Pin, Cotter, 3/32, 1.0 |
| 25. | 753-04070 | Pin, Lynch, .1875 |
| 26. | 714-04043 | Pin, Cotter, Bow-Tie |
| 27. | 914-0470 | Pin, Cotter, 1/8 x 1.25 |
| 28. | 917-04074 | Gear, Deck, Adjustment |
| 29. | 921-04041 | Coupler, Water |
| 30. | 731-05679 | Roller, Front |
| 31. | 732-04649 | Spring, Extension, 1.0 OD x 6.10 |
| 32. | 732-04652 | Spring, Compr', .535 OD x 1.751 |
| 33. | 937-3000 | Lube Fitting, 3/16 |
| 34. | 734-04155 | Wheel, Deck, 5.0 Dia. Ball |

| Ref. | Part Number | Description |
|------|-------------|--|
| 35. | 734-0973 | Wheel, Deck 5.0 x 1.38 |
| 36. | 936-0119 | Washer, Lock, 5/16, Regular Duty |
| 37. | 936-0179 | Washer, Flat, .531 x 1.25 x .100 |
| 38. | 736-0225 | Washer, Lock, 5/8, Int Tooth |
| 39. | 936-0275 | Washer, Flat, .344 x .688 x .065 |
| 40. | 936-0300 | Washer, Flat, .406 x .875 x .059 |
| 41. | 936-0314 | Washer, Thrust, .375 x .70 x .030 |
| 42. | 736-0317 | Washer, Bell, .63 x 1.25 x .18 |
| 43. | 736-3010 | Washer, Flat, .407 x .812 x.135 |
| 44. | 737-04003D | Port, Water |
| 45. | 938-0373 | Bolt, Shoulder, .496 x 1.525, 3/8-16 |
| 46. | 738-04162A | Spacer, Shoulder, .8840 x .190 |
| 47. | 938-3056 | Bolt, Shoulder, .496 x 2.50, 3/8-16 |
| 48. | 942-04053C | Blade, 17.90 Star 2 In 1 |
| 49. | 747-04530 | Rod, Keeper, |
| 50. | 747-05067A | Rod, Lift, Deck, Front, 11.7 |
| 51. | 756-04216 | Pulley, Deck, 5.39 Dia. |
| 52. | 747-1116 | Rod, Deck Release |
| 53. | 750-3119 | Spacer, .406 Id x 1.00 OD x .38 |
| 54. | 954-04240 | Belt, V-Type |
| 55. | 756-04129B | Pulley, Idler, 4.25"Dia. |
| 56. | 750-1096 | Spacer, .800 x 1.100 x 1.5300 |
| 57. | 783-04399 | Cover, Belt, LH 50" |
| 58. | 783-04400 | Cover, Belt, Rh 50" |
| 59. | 783-04414A | Skirt, Center, 50" |
| 60. | 783-04415 | Skirt, RH, 50" |
| 61. | 748-0434 | Spacer, .750 x 1.150 x .230 |
| 62. | 783-06361 | Bracket, Idler, Arm |
| 63. | 631-04070A | Chute Assembly |
| 64. | 711-04565 | Pin, Hinge, .3175 Dia. x 14.06 ,1 |
| 65. | 941-0919 | Bearing, Ball, .787id x 1.85 Od x .551 |
| 66. | 732-04372 | Spring, Torsion, .44 I.D. x 2.0, |
| 67. | 783-05030 | Bracket, Chute 50/54" |
| 68. | 738-0976 | Shaft, Spindle, 4.1250 |

Hydrostatic Transmission (Hydro-Gear 311-0510)

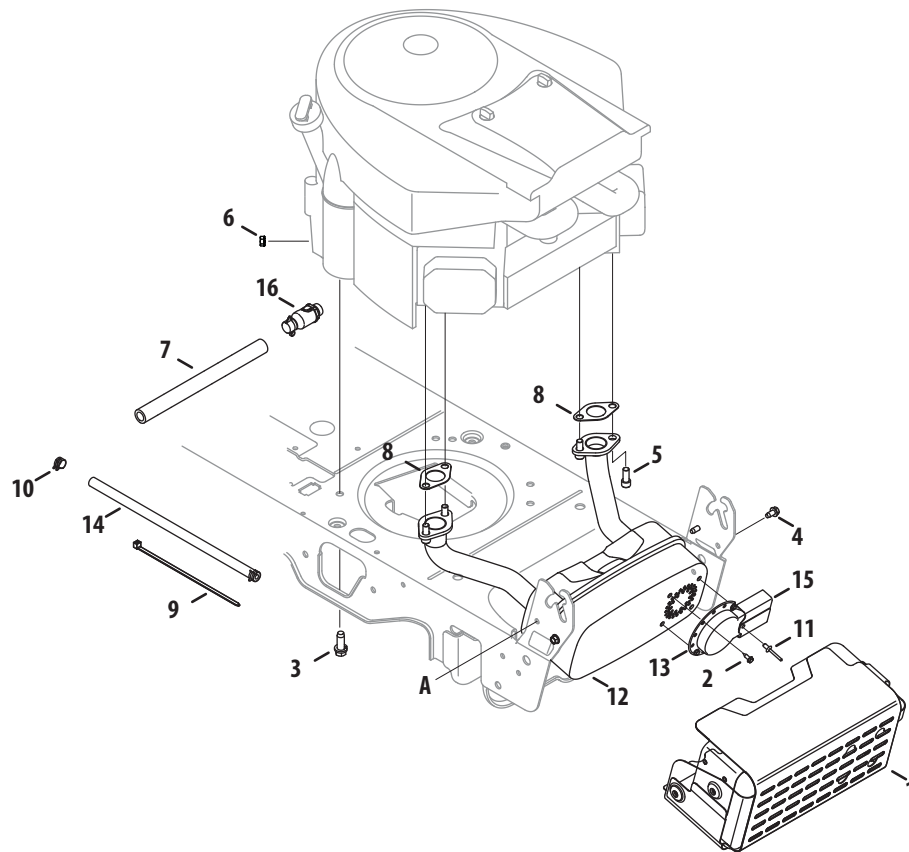


Hydrostatic Transmission (Hydro-Gear 311-0510)

| Ref. | Part Number | Description | Ref. | Part Number | Description |
|------|-------------|------------------------------------|------|-----------------|------------------------------------|
| 1 | HG-70467 | Main Housing Assembly | 40 | HG-44871 | Ring, Spiral Retaining |
| | | Main Housing, Machined | 41 | HG-51083 | Pin, Jackshaft |
| | | Bushing ,865 x 985 x .790 | 42 | HG-51100 | Magnet, Ring |
| 2 | HG-70483 | Main Housing Assembly | 43 | HG-51136 | Spring, Bypass |
| | | Main Housing, Machined | 44 | HG-50016 | Hydro Mtg Screw 3/8-24 x 2.5 |
| | | Bushing ,865 x 985 x .790 | 45 | HG-51581 | Bottom, Filter |
| | | Bushing 624 x 719 x .562 | 46 | HG-51580 | Base Filter W/ Poppet |
| 3 | HG-70477 | Center Section Assembly | 47 | HG-51091 | Actuator Bypass |
| | | Center Section Machined | 48 | HG-51098 | Rod Bypass Actuator |
| | | Bushing. 707 x .788 x .591 | 49 | HG-51135 | Arm, Bypass |
| 4 | HG-51048 | Swashplate, Trunnion Machined | 50 | HG-51116 | Retaining Ring 0.250 External |
| 5 | HG-70331 | Block - Assembly | 51 | HG-51081 | Seal, Lip .741 x .250 x .250 Tc |
| | | Block - Cylinder | 52 | HG-44371 | Flat Washer 5/8 Id x 1.0 Od x .05 |
| | | Piston | 53 | HG-44145 | Retaining Ring |
| | | Spring, Compression | 54 | HG-51071 | Bearing, Center Block |
| | | Washer - Thrust | 55 | HG-2003014 | Spring - Helical Compression |
| 7 | HG-51190 | Hex Flange Screw 1/4-20 x-1,25 | 56 | HG-2003017 | Washer |
| 9 | HG-51062 | Shaft, Input | 58 | HG-62589 | Kit, Brake Yoke |
| 10 | HG-2000022 | Ring - Retaining | | | Brake Yoke |
| 11 | HG-50951 | Spacer | | | Sq. Hd, Bolt 5/16-24 Ribbed |
| 12 | HG-50329 | Ring - Retaining | 59 | HG-51072 | Rotor, Brake |
| 13 | HG-51161 | Seal Lip .67 x 1.58 x .276 | 60 | 917-0678 | Brake Puck |
| 14 | HG-50315 | Ball Bearing 17mm Id x 40mm Od | 61 | 917-0682 | Puck Plate |
| 16 | HG-51064 | Bolt. Flange 5/16-24 x .94 (Patch) | 62 | 941-0343 | Brake Actuating Pin |
| 17 | HG-51140 | Lip Seal 18 x 32 x 7 | 63 | HG-51146 | Hex Screw 1/4-20 x 2 w/ Patch |
| 18 | HG-51119 | Arm Control | 65 | HG-23711 | Spacer |
| 19 | HG-50551 | Bearing 30x52 x 13 Thrust | 66 | HG-70896 | Kit, Spring |
| 24 | HG-50966 | Shaft Motor | 67 | HG-44138 | So. Hd, Bolt 5/16-24- Ribbed |
| 27 | HG-51130 | Gear - Pinnion 13t | 68 | HG-44094 | Arm, Brake |
| 28 | HG-51129 | 10t/48t Gear | 69 | 912-0273 | Slotted Hex Nut 5/16-24 |
| 29 | HG-51043 | Gear Jot Jackshaft | 70 | 914-0507 | Cotter Pin 3/32 x 3/4 |
| 30 | HG-51044 | 60t Bull Gear | 71 | HG-50919 | Comp. Spring Brake Anti-Drag |
| 31 | HG-51088 | Sleeve Bearing .75 x 1.750 x .625 | 72 | HG-50132 | Washer, Ht .5 I. D. x 1 OD, x .032 |
| 32 | HG-51089 | Sleeve Bearing .75 x 1.575 x .625 | 73 | 736-0371 | Flat Washer, 11/32 ID x 7/8 OD |
| 33 | HG-44875 | Washer 3/4 Id x 1-1/2 Od x .13 Thk | 74 | HG-70719 | Kit, Seal |
| 34 | HG-51066 | Lip Seal Axle Seal | | | Oil, Seal 625 x Lo x .25 |
| 35 | HG-51079 | Shaft Axle .75 x 11.39 (Dd R. H.) | | | Ring, Ret-Star Washer |
| 36 | HG-51078 | Shaft Axle .75 x 17.99 (Dd, L, H.) | | | Bulletin, Shaft Seal |
| 37 | HG-44096 | Miter Gear (Splined) | 75 | HG-51084 | Check Plug Assem, .027 Washer |
| 38 | HG-44097 | Miter Gear 15t (0.5 Id) | 83 | HG-9004800-2506 | Pin, Standard Headless |
| 39 | HG-50146 | Shaft | 84 | HG-51143 | Fitting, 5/16 Sae 5/32 Tube |

Hydrostatic Transmission (Hydro-Gear 311-0510)

| Ref. | Part Number | Description | Ref. | Part Number | Description |
|------|-----------------|------------------------------------|------|-------------|---------------------------------|
| 85 | HG-51147 | Hose, Expansion Tank | 121 | HG-70756 | Filter Assembly |
| 87 | HG-51251 | Cap., Vent | | | Bottom Filter |
| 88 | HG-50653 | Bolt, Self Tapping 10-32 x 112 | | | Base Filter w/ Poppet |
| 94 | HG-44147 | Ball Bearing .62 Id x 1.38 x 44 | | | Spring Bypass |
| 95 | HG-50837 | Cap Screw, 5/16-24 x 1-112 | | | Actuator Bypass |
| 96 | HG-51200 | Spacer, Locating | | | Deflector |
| 97 | HG-50870 | Screw, Sfhcs | 128 | HG-70503 | Kit, Expansion Tank |
| 98 | HG-51120 | Arm, Return | | | Tank, Expansion |
| 99 | HG-51097 | Puck, Adjusting | | | Cap, Vent |
| 100 | HG-51122 | Washer, .325 OD x 1.6 ID x .150 | | | Bolt, Self Tapping 10-32 x 1/2 |
| 101 | HG-51131 | Spring, Extension | | | Bracket, Support Expansion Tank |
| 102 | HG-51123 | Spacer, .56 x .26 x .87 | | | Silicon-Sponge 112 x 1/2 x 3/16 |
| 103 | HG-51223 | Bracket, Torque | 129 | HG-51252 | Cap, Expansion Tank Shipping |
| 107 | HG-51134 | Deflector | — | HG-50928 | Sealant |
| 108 | HG-51069 | Washer, Motor Shaft .71 Id 1.15 Od | — | HG-70463 | Seal, O-Ring Kit |
| 109 | HG-9005110-5600 | Plug, SAE #6 | — | — | 20w-50 Oil (78.8 oz) |
| 110 | HG-50868 | Torx Head Screw, 5/16-18 | | | |
| 111 | HG-51144 | O-Ring, .07 x .301 ID | | | |
| 113 | HG-51179 | Bracket, Support Expansion Tank | | | |
| 114 | HG-51184 | Spring Guide | | | |
| 116 | HG-51196 | Silicon Sponge | | | |
| 120 | HG-70759 | Center Section - Bypass Assm | | | |
| | | Center Section Machined | | | |
| | | Base Filter w/ Poppet | | | |
| | | Check Plug Assembly | | | |
| | | Spring Bypass | | | |
| | | Actuator Bypass | | | |
| | | Deflector | | | |
| | | Bottom, Filter | | | |
| | | Bushing, .707 x .788 x .591 | | | |



| Ref. | Part Number | Description |
|------|-------------|-------------------------------------|
| 1. | 683-04549 | Shield Ass'y, Muffler |
| 2. | 710-0227 | Screw, Ab, #8-18, 0.500, |
| 3. | 710-04683 | Screw, Self-tapping, 3/8-16, 1.000, |
| 4. | 710-0599 | Screw, Self-tapping, 1/4-20, 0.500, |
| 5. | 710-1314A | Screw, Socket Head, 5/16-18, .750 |
| 6. | 712-0271 | Nut, Sems, 1/4-20 |
| 7. | 751-3141-14 | Hose, Extension, Oil Drain |
| 8. | 721-0460 | Gasket, Exhaust |
| 9. | 725-0157 | Cable, Tie, 3/16 x .05 x 7.4 |
| 10. | 726-0205 | Clamp, Hose, .490 Dia. |
| 11. | 728-04000 | Rivet, Pop, .188 Dia x .300 |
| 12. | 751-10542A | Muffler, Intek Twin |
| 13. | 751-0564B | Deflector, Muffler |
| 14. | 751-10349 | Hose, Fuel, Low Permeation, 1/4 |
| 15. | 751-10353 | Deflector, Muffler, Long |
| 16. | 951-10517A | Drain, Oil |

LTX 1046VT Labels

777D13207



777D12864



777D13208



777I22679



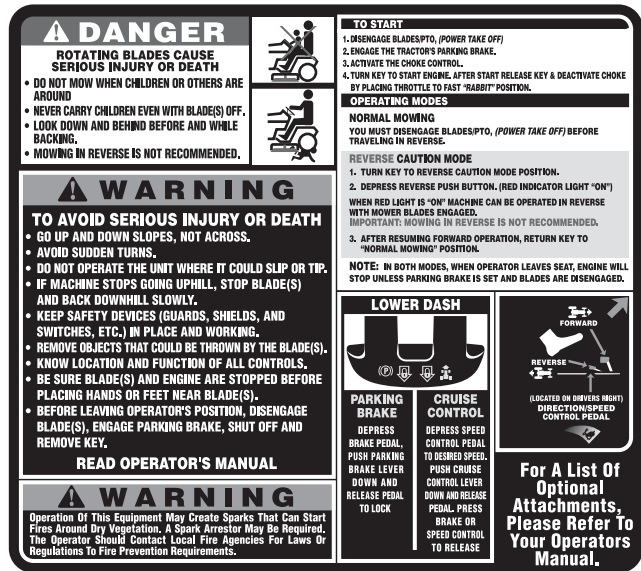
777I23293



777D12928



777S33233



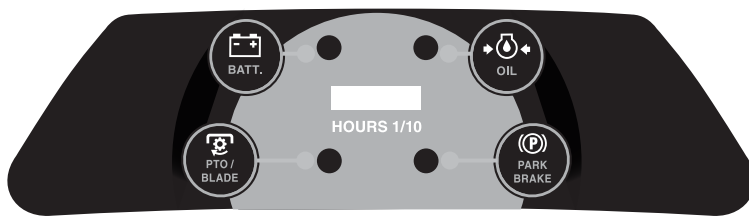
777D12929



777D13983



777I23292



777I23294



777D14076



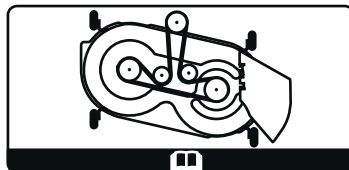
777D14077



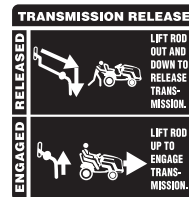
777S30018



777I22481



777S23132



777D13924



777I23133



777S30503



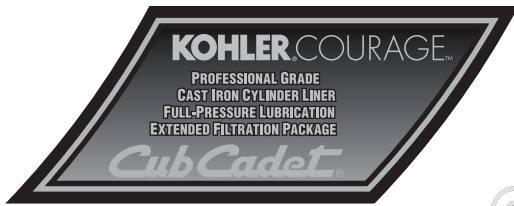
777X44232

| MODEL LTX 1046VT REPLACEMENT PARTS | | | |
|--|----------------|--------------|-----------|
| Use only Cub Cadet genuine factory parts | | | |
| Blades | 942-04244A (2) | Oil Filter | BS-696854 |
| Lower Drive Belt | 954-04207 | Air Filter | BS-792105 |
| Engine To Deck Belt | 954-04219 | Pre-Cleaner | BS-792303 |
| Deck Spindles | 918-04636 | Spark Plug | 759-3336 |
| Ignition Key | 725-2054A | Fuel Filter | BS-691035 |
| Solenoid | 725-04439 | Oil Capacity | 63.0 oz |

777X43873



777D13207



777D13208



777D12864



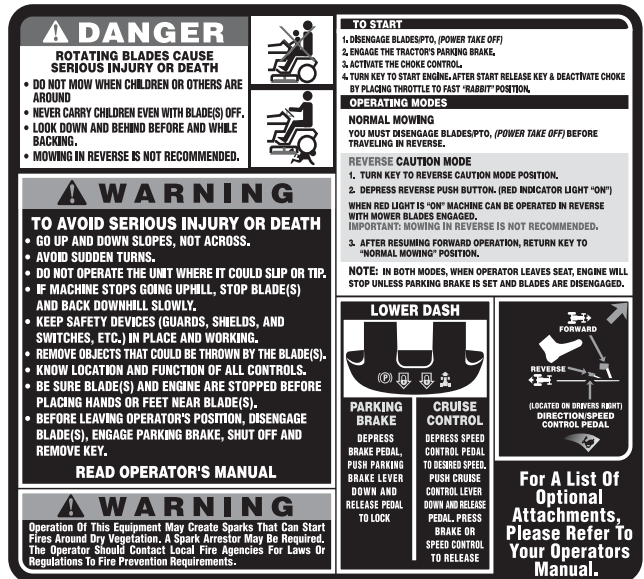
777I23293



777D12928



777S33233



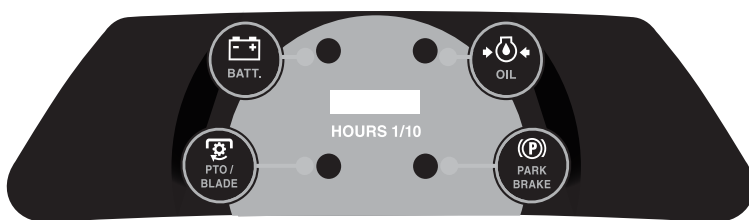
777D12929



777D13983



777I23292



777I23294



777D14176



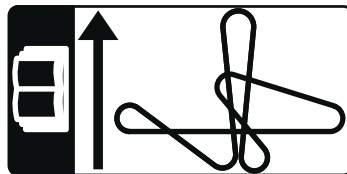
777D14175



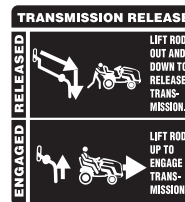
777S30018



777I23150



777S23132



777I23133



777I22679



777S30503



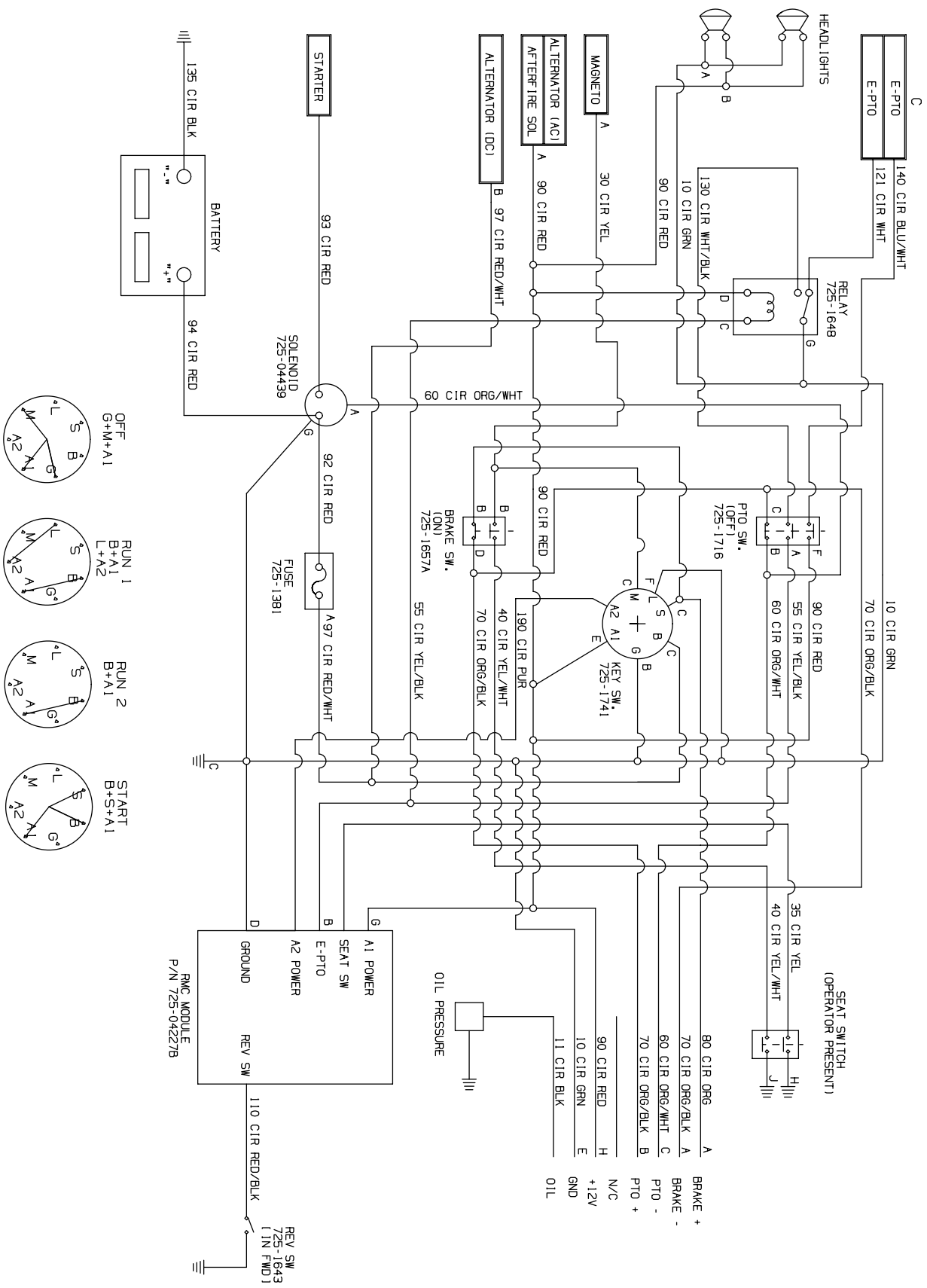
777X44233

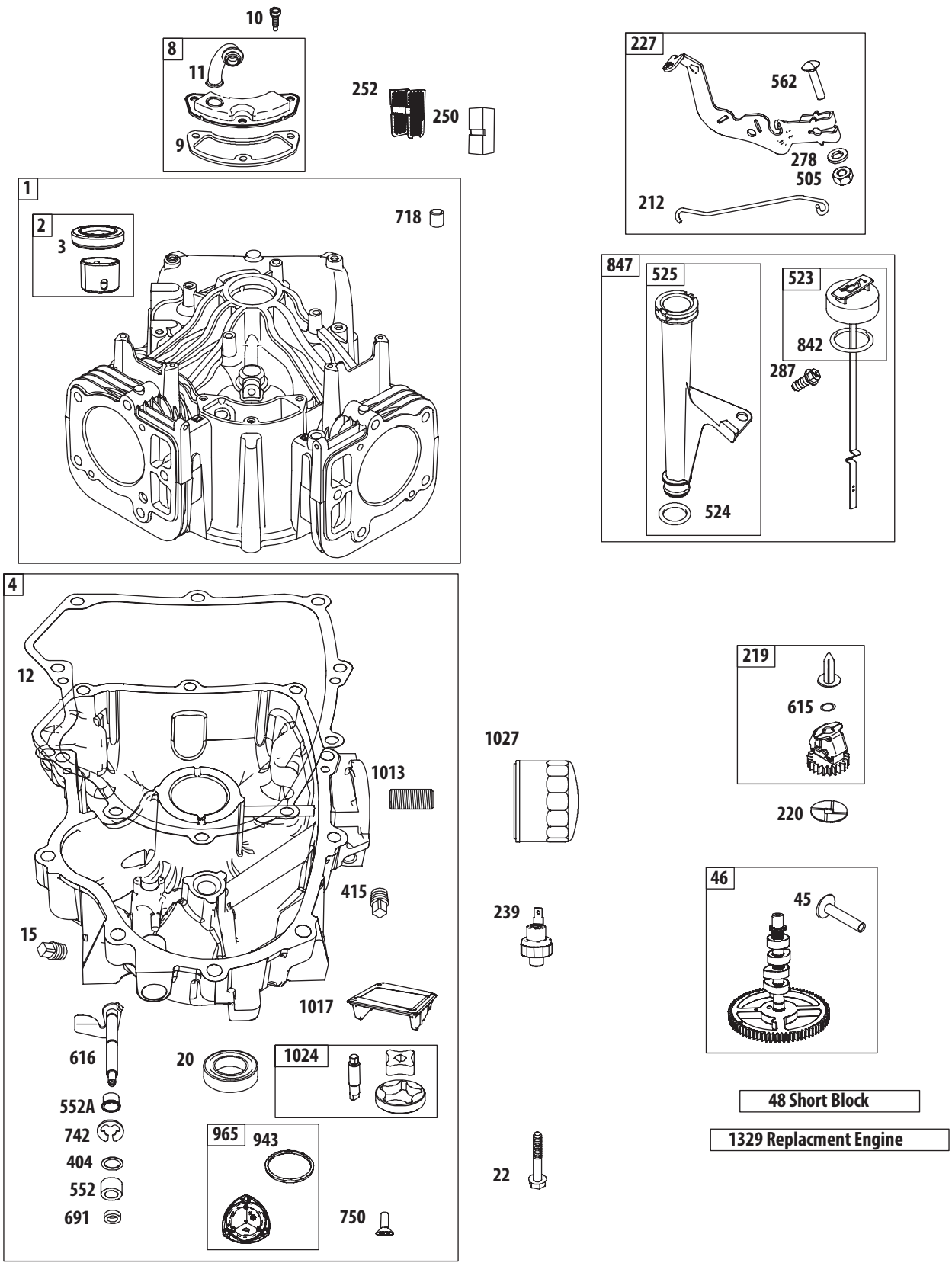
| MODEL LTX 1050VT REPLACEMENT PARTS | | | |
|--|----------------|--------------|-----------|
| Use only Cub Cadet genuine factory parts | | | |
| Blades | 942-04053C (2) | Oil Filter | BS-698854 |
| Lower Drive Belt | 954-04207 | Air Filter | BS-792105 |
| Engine To Deck Belt | 954-04240 | Pre-Cleaner | BS-792303 |
| Deck Spindles | 918-04826A | Spark Plug | 759-3336 |
| Ignition Key | 725-2054A | Fuel Filter | BS-691035 |
| Solenoid | 725-04439 | Oil Capacity | 63.0 oz |

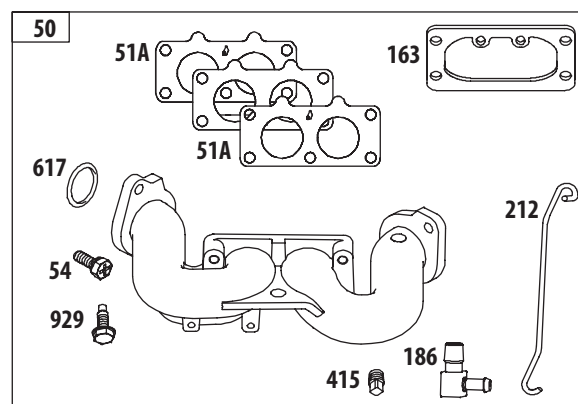
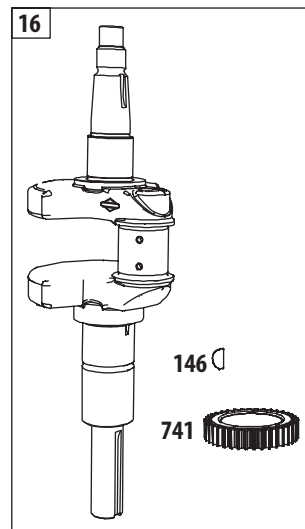
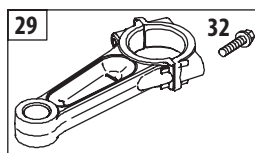
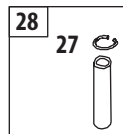
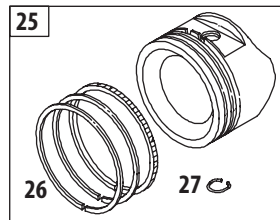
777D13924

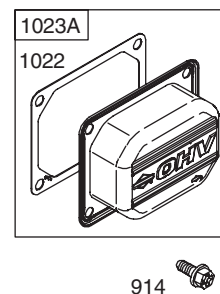
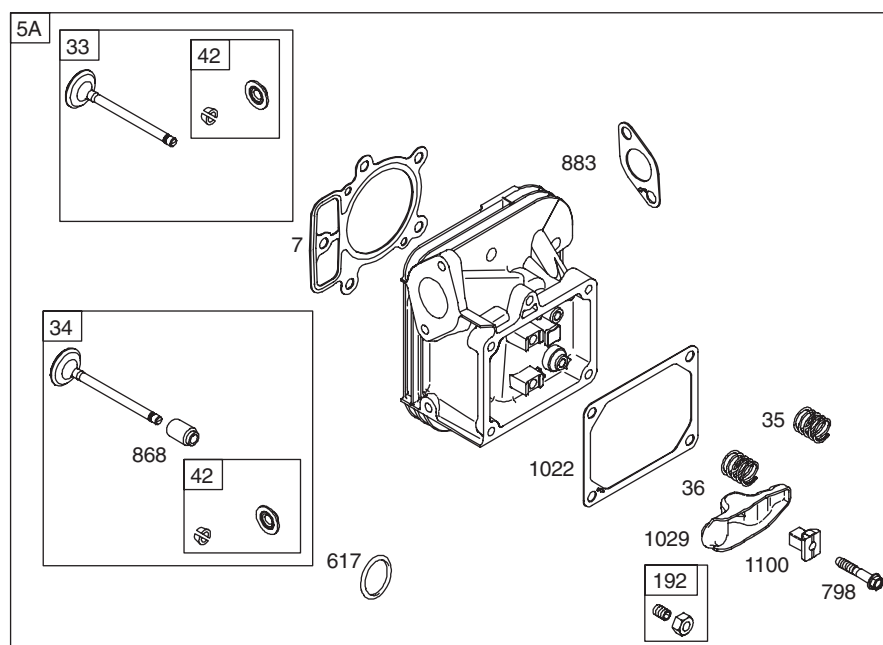
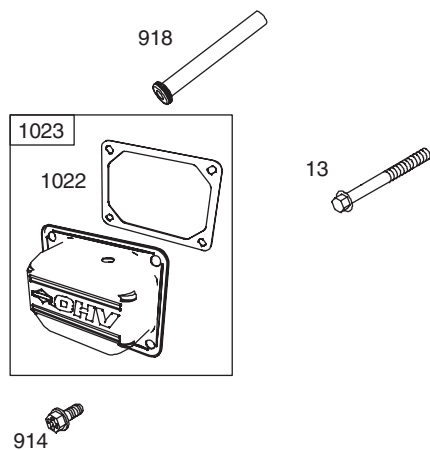
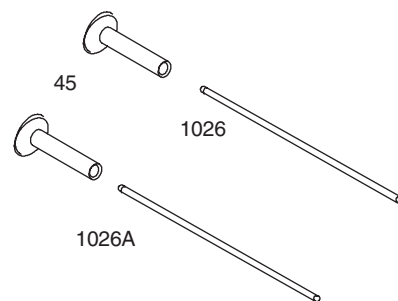
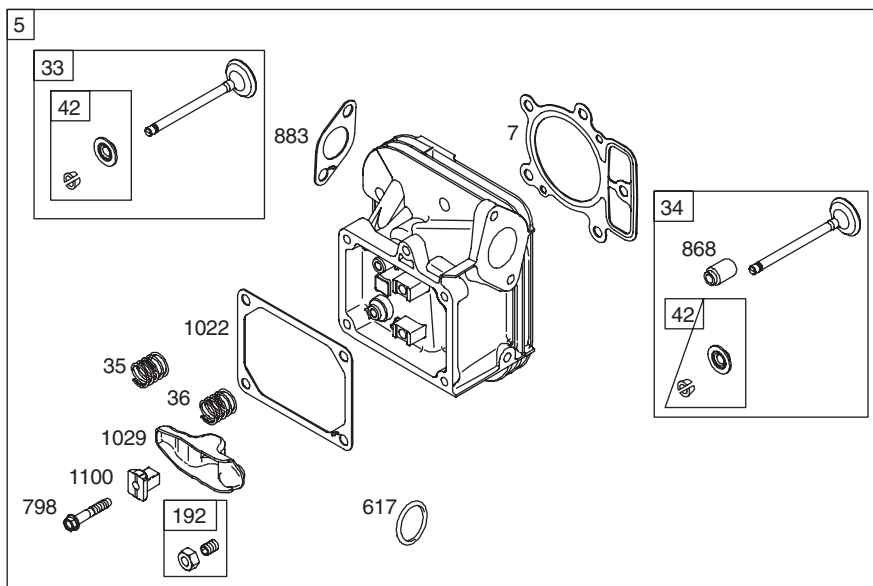


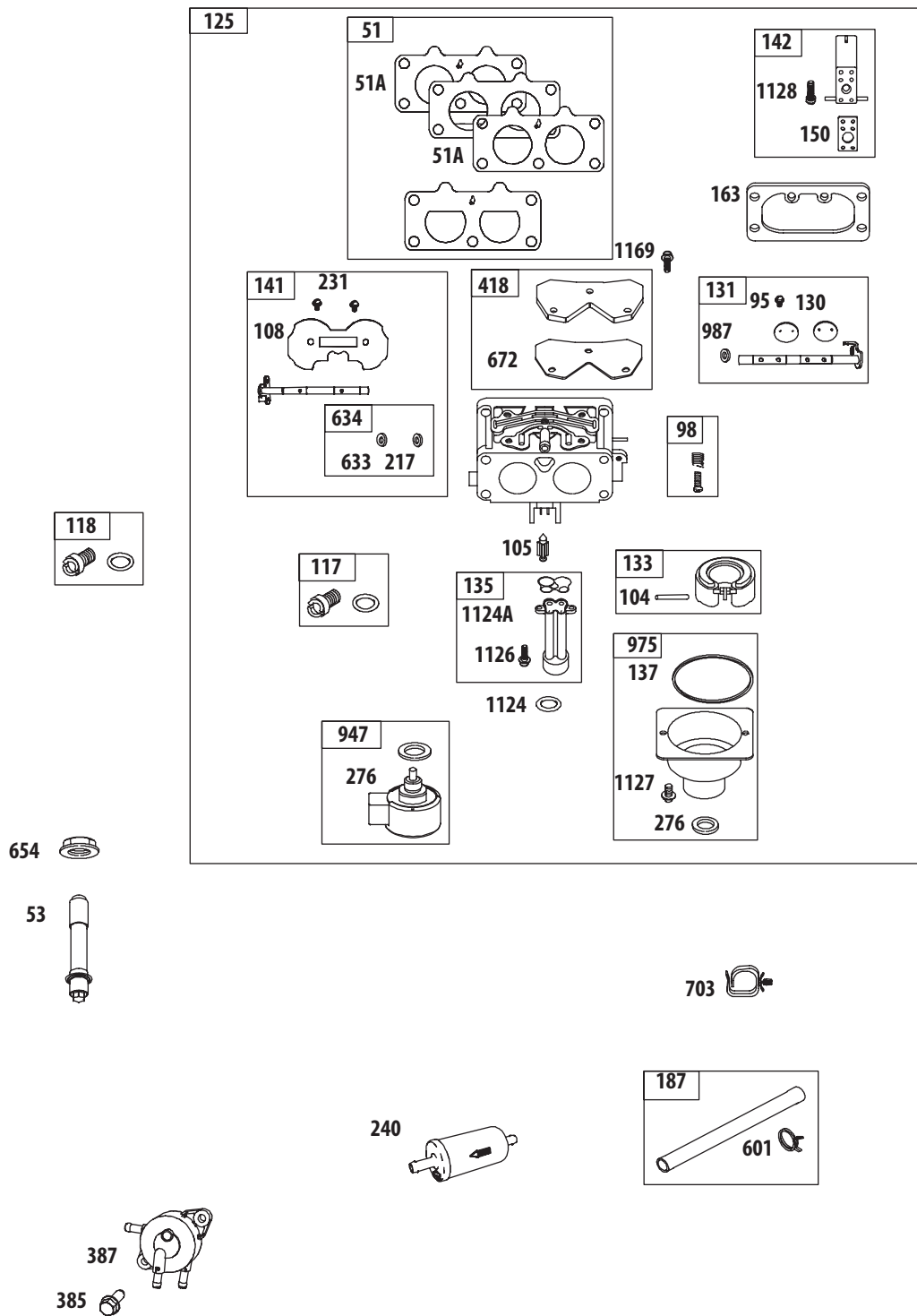
Electrical Schematic

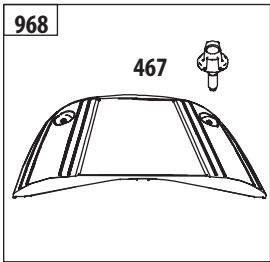




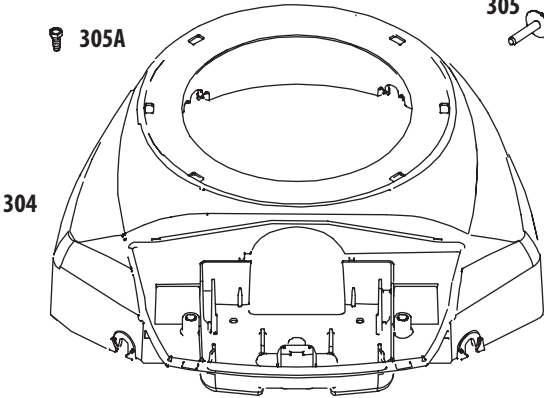
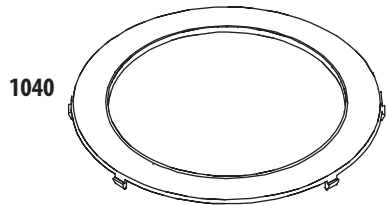




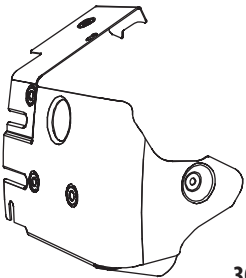




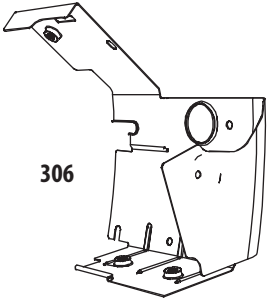
1036 Emissions Label



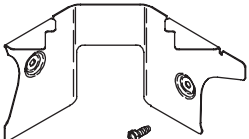
306A



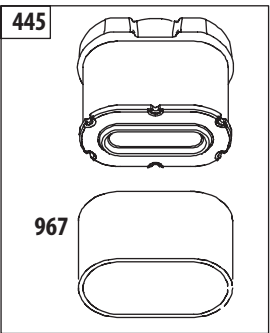
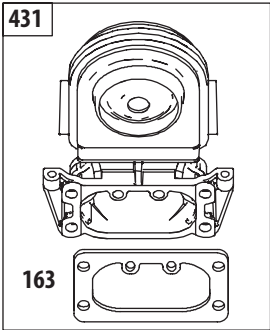
306



865

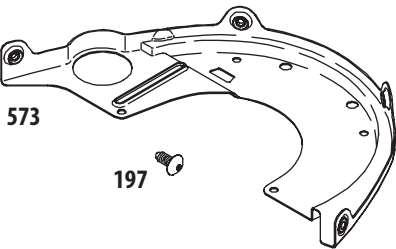


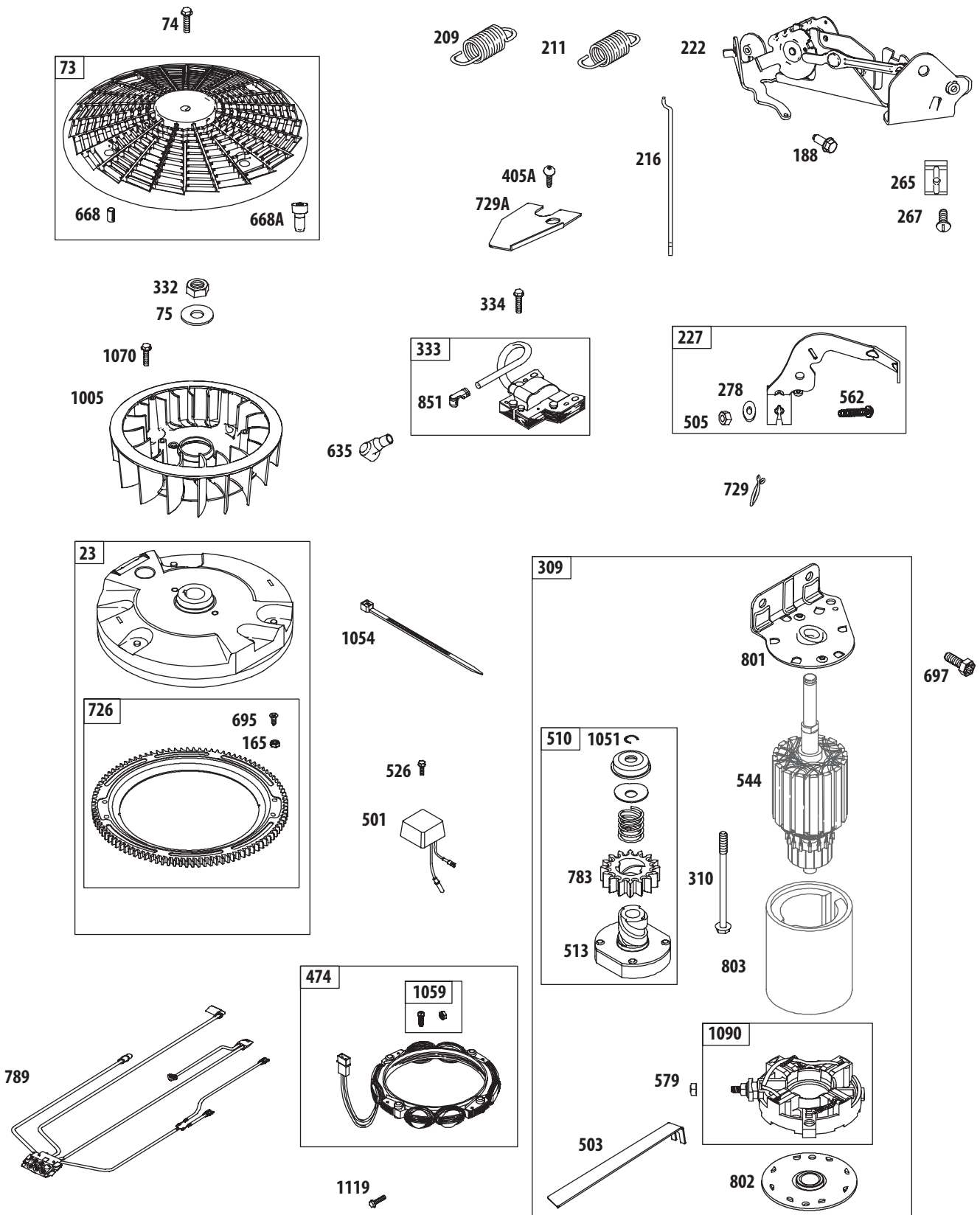
447

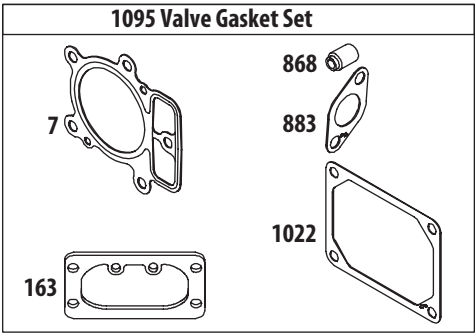
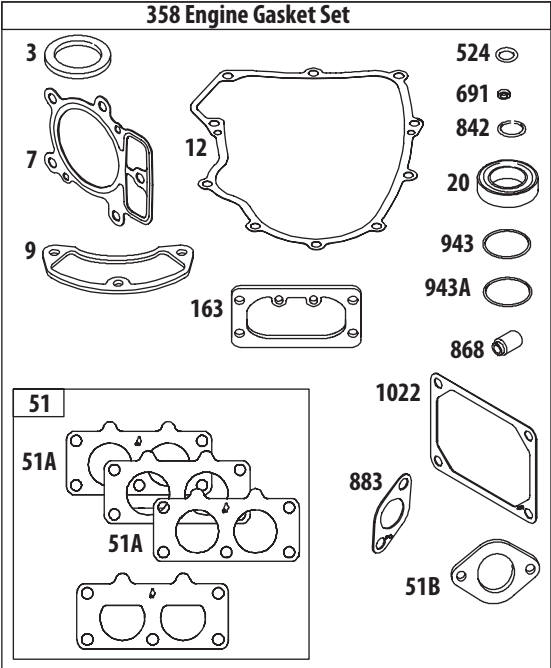
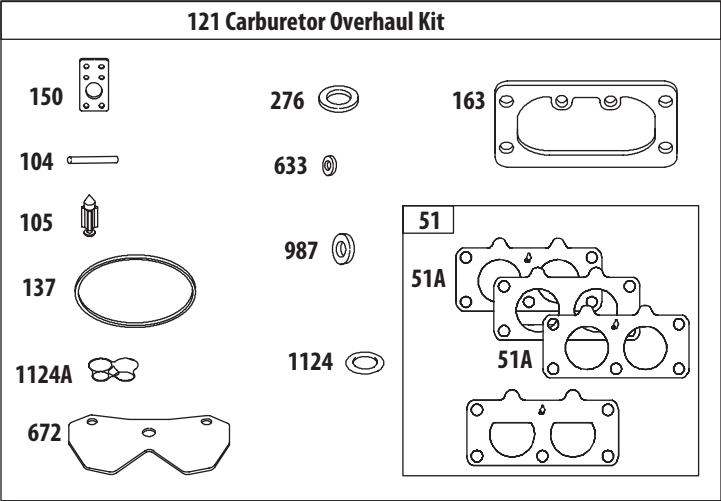


573

197







B&S 44L777/44M777

| Ref. | Part Number | Description | Ref. | Part Number | Description |
|------|--------------|----------------------------------|------|--------------|--------------------------------|
| 1 | BS-793564 | Cylinder Assembly | 51B | BS-690949 | Gasket-Intake |
| 2 | BS-499585 | Kit-Bushing/Seal (Magneto Side) | 53 | BS-690951 | Stud (Carburetor) |
| 3 | • BS-391086s | Seal-Oil (Magneto Side) | 54 | BS-699816 | Screw (Intake Manifold) |
| 4 | BS-796307 | Sump-Engine | 73 | BS-494439 | Screen-Rotating |
| 5 | BS-796231 | Head-Cylinder (Cylinder #1) | 74 | BS-698425 | Screw (Rotating Screen) |
| 5A | BS-796232 | Head-Cylinder (Cylinder #2) | 75 | BS-691056 | Washer (Flywheel) |
| 7 | •♦ BS-693997 | Gasket-Cylinder Head | 95 | BS-690718 | Screw (Throttle Valve) |
| 8 | BS-792185 | Breather Assembly | 98 | BS-699721 | Kit-Idle Speed |
| 9 | • BS-690937 | Gasket-Breather | 104 | ♣ BS-694918 | Pin-Float Hinge |
| 10 | BS-697551 | Screw (Breather Assembly) | 105 | BS-698537 | Valve-Float Needle |
| 11 | BS-792184 | Tube-Breather | 108 | BS-699723 | Valve-Choke |
| 12 | • BS-697227 | Gasket-Crankcase | 117 | BS-842630 | Jet-Main (Standard) |
| 13 | BS-793988 | Screw (Cylinder Head) | 118 | BS-797477 | Jet-Main (High Altitude) |
| 15 | BS-690946 | Plug-Oil Drain | 121 | BS-792455 | Kit-Carburetor Overhaul |
| 16 | BS-796540 | Crankshaft | 125 | BS-796997 | Carburetor |
| 20 | • BS-795387 | Seal-Oil (PTO Side) | 130 | BS-690993 | Valve-Throttle |
| 22 | BS-694966 | Screw (Crankcase Cover/ Sump) | 131 | BS-499805 | Kit-Throttle Shaft |
| 23 | BS-691053 | Flywheel | 133 | BS-699724 | Float-Carburetor |
| 24 | BS-222698s | Key-Flywheel | 135 | BS-699729 | Tube-Fuel Transfer |
| 25 | BS-792023 | Piston Assembly (Standard) | 137 | ♣ BS-690994 | Gasket-Float Bowl |
| 25 | BS-792072 | Piston Assembly (.020" Oversize) | 141 | BS-796228 | Kit-Choke Shaft |
| 26 | BS-793561 | Ring Set (Standard) | 142 | BS-699726 | Nozzle-Carburetor |
| 26 | BS-792073 | Ring Set (.020" Oversize) | 146 | BS-690979 | Key-Timing |
| 27 | BS-690975 | Lock-Piston Pin | 150 | BS-690995 | Gasket-Nozzle |
| 28 | BS-696581 | Pin-Piston | 163 | •♣ BS-691001 | Gasket-Air Cleaner |
| 29 | BS-796209 | Rod-Connecting | 165 | BS-693148 | Nut (Ring Gear) |
| 32 | BS-690976 | Screw (Connecting Rod) | 186 | BS-795985 | Connector-Hose |
| 33 | BS-697576 | Valve-Exhaust | 187 | 751-10349-16 | Line-Fuel |
| 34 | BS-792200 | Valve-Intake | 188 | BS-697551 | Screw (Control Bracket) |
| 35 | BS-694865 | Spring-Valve (Intake) | 192 | BS-690083 | Adjuster-Rocker Arm |
| 36 | BS-694865 | Spring-Valve (Exhaust) | 197 | BS-697820 | Screw (Back Plate) |
| 42 | BS-499586 | Keeper-Valve | 209 | BS-796658 | Spring-Governor (Yellow/Brown) |
| 45 | BS-690977 | Tappet-Valve | 211 | BS-796225 | Spring-Governed Idle (Orange) |
| 46 | BS-796853 | Gear-Cam (44L777) | 212 | BS-695238 | Link-Throttle |
| | BS-797242 | Gear-Cam (44M777) | 216 | BS-796229 | Link-Choke |
| 48 | BS-797093 | Short Block | 217 | BS-695409 | Spring-Choke Return |
| 50 | BS-695241 | Manifold-Intake | 219 | BS-793338 | Gear-Governor |
| 51 | • BS-795123 | Gasket-Intake | 220 | BS-690412 | Washer (Governor Gear) |
| 51A | BS-690950 | Gasket-Intake | 221 | BS-841026 | Cup-Governor |
| | | | 222 | BS-796226 | Bracket-Control |

| Ref. | Part Number | Description | Ref. | Part Number | Description |
|------|-------------|--|------|-------------|---|
| 227 | BS-796223 | Lever-Governor Control | 524 | • BS-691032 | Seal-Dipstick Tube |
| 231 | BS-690718 | Screw (Choke Valve) | 525 | BS-691037 | Tube-Dipstick |
| 239 | BS-792028 | Switch-Oil Pressure | 526 | BS-691129 | Screw (Regulator) |
| 240 | BS-691035 | Filter-Fuel | 544 | — | Armature-Starter (Service with Starter Motor BS-497595) |
| 250 | BS-690957 | Retainer-Breather | 552 | BS-796638 | Bushing-Governor Crank |
| 252 | BS-794389 | Collector-Oil | 552A | BS-690553 | Bushing-Governor Crank |
| 265 | BS-691024 | Clamp-Casing | 562 | BS-690311 | Screw (Governor Control Lever) |
| 267 | BS-695134 | Screw (Casing Clamp) | 573 | BS-790444 | Plate-Back |
| 276 | ♣ BS-695410 | Washer-Sealing | 579 | BS-691029 | Nut (Starter Cable) |
| 278 | BS-792651 | Washer (Governor Control Lever) | 601 | BS-691038 | Clamp-Hose (Black) |
| 287 | BS-697551 | Screw (Dipstick Tube) | 615 | BS-698290 | Retainer-Governor Shaft |
| 304 | BS-797407 | Housing-Blower | 616 | BS-691045 | Crank-Governor |
| 305 | BS-691005 | Screw (Blower Housing) | 617 | BS-697891 | Seal-O Ring (Intake Manifold) (Red) |
| 305A | BS-790690 | Screw (Blower Housing to Intake Elbow) | 633 | ♣ BS-699813 | Seal-Choke/Throttle Shaft |
| 306 | BS-796541 | Shield-Cylinder (Cylinder #2) | 634 | BS-698779 | Spring/Seal Assembly |
| 306A | BS-796852 | Shield-Cylinder (Cylinder #1) | 635 | BS-66538s | Boot-Spark Plug |
| 307 | BS-697551 | Screw (Cylinder Shield) | 654 | BS-690958 | Nut (Carburetor) |
| 309 | BS-497595 | Motor-Starter | 668 | • BS-691215 | Spacer (Rotating Screen) |
| 310 | BS-690323 | Screw (Starter Motor) | 668A | BS-691500 | Spacer (Rotating Screen) |
| 332 | BS-691059 | Nut (Flywheel) | 672 | BS-690234 | Gasket-Carburetor Plate |
| 333 | BS-691060 | Armature-Magneto | 691 | • BS-790574 | Seal-Governor Shaft |
| 334 | BS-691061 | Screw (Magneto Armature) | 695 | BS-693149 | Screw (Ring Gear) |
| 337 | 759-3336 | Plug-Spark | 697 | BS-791680 | Screw (Drive Cap) |
| 358 | BS-694012 | Gasket Set-Engine | 703 | BS-691010 | Clip |
| 385 | BS-797409 | Screw (Fuel Pump) | 718 | BS-690959 | Pin-Locating |
| 387 | BS-808656 | Pump-Fuel | 726 | BS-499612 | Gear-Ring |
| 404 | BS-690442 | Washer (Governor Crank) | 729 | BS-694123 | Clip-Wire |
| 415 | BS-794903 | Plug (Oil Pressure Switch Hole) | 741 | BS-690980 | Gear-Timing |
| 418 | BS-795912 | Plate-Carburetor | 742 | BS-690328 | Retainer-E Ring (Governor Crank) |
| 431 | BS-792297 | Elbow-Intake | 750 | BS-796208 | Screw (Oil Pump Cover) |
| 445 | BS-792105 | Filter-Air Cleaner Cartridge | 783 | BS-695708 | Gear-Pinion |
| 447 | BS-691003 | Screw (Air Guide Cover) | 789 | BS-797460 | Harness-Wiring |
| 467 | BS-790697 | Knob-Air Cleaner | 798 | BS-697890 | Screw (Rocker Arm) |
| 474 | BS-696457 | Alternator | 801 | BS-691283 | Cap-Drive |
| 501 | BS-794360 | Regulator | 802 | BS-691286 | Cap-End |
| 503 | BS-691532 | Strap-Starter | 803 | — | Housing-Starter (Service with Starter Motor BS-497595) |
| 505 | BS-691029 | Nut (Governor Control Lever) | 842 | BS-691031 | Seal-O Ring (Dipstick Tube) |
| 510 | BS-696541 | Drive-Starter | | | |
| 513 | BS-692024 | Clutch-Drive | | | |
| 523 | BS-691036 | Dipstick | | | |

B&S 44L777/44M777

| Ref. | Part Number | Description | Ref. | Part Number | Description |
|-------|--------------|-------------------------------|-------|----------------|--|
| 847 | BS-499602 | Dipstick/Tube Assembly | 1026A | BS-690982 | Rod-Push (Intake) |
| 851 | BS-493880s | Terminal-Spark Plug | 1027 | BS-696854 | Filter-Oil |
| 865 | BS-792286 | Cover-Air Guide (Valley) | 1029 | BS-690972 | Arm-Rocker |
| 868 | • BS-690968 | Seal-Valve | 1036 | — | Label-Emissions (Available from a B&S Authorized Dealer) |
| 883 | •♦ BS-690970 | Gasket-Exhaust | 1040 | BS-791237 | Plate-Trim |
| 914 | BS-691127 | Screw (Rocker Cover) | 1051 | BS-691265 | Ring-Retaining (Starter Drive) |
| 918 | BS-797408 | Hose-Vacuum | 1054 | BS-280275 | Tie-Cable |
| 929 | BS-695239 | Screw (Choke Control Bracket) | 1059 | BS-698516 | Kit-Screw/Washer (Alternator) |
| 943 | BS-796222 | Seal-O Ring (Oil Pump Cover) | 1070 | BS-791680 | Screw (Flywheel Fan) |
| 947 | BS-841546 | Solenoid-Fuel | 1090 | BS-691293 | Retainer-Brush |
| 965 | BS-796221 | Cover-Oil Pump | 1095 | BS-694013 | Gasket Set-Valve |
| 967 | BS-792303 | Filter-Pre Cleaner | 1100 | BS-791959 | Pivot-Rocker Arm |
| 968 | BS-795120 | Cover-Air Cleaner | 1119 | BS-93621 | Screw (Alternator) |
| 975 | BS-793592 | Bowl-Float | 1124 | BS-841653 | Seal-O Ring (Fuel Transfer Tube) |
| 987 | BS-691000 | Seal-Throttle Shaft | 1124A | BS-690988 | Seal-O Ring (Fuel Transfer Tube) |
| 1005 | BS-791236 | Fan-Flywheel | 1126 | BS-690991 | Screw (Fuel Transfer Tube) |
| 1013 | BS-690954 | Nipple-Oil Filter | 1127 | BS-695407 | Screw (Fuel Bowl) |
| 1017 | BS-796214 | Screen-Oil Pump | 1128 | BS-690990 | Screw (Carburetor Nozzle) |
| 1022 | BS-690971 | Gasket-Rocker Cover | 1169 | BS-690990 | Screw (Carburetor Plate) |
| 1023 | BS-793146 | Cover-Rocker (Cylinder #1) | 1329 | BS-44Q777-0137 | Replacement Engine |
| 1023A | BS-499600 | Cover-Rocker (Cylinder #2) | | | |
| 1024 | BS-796220 | Pump-Oil | | | |
| 1026 | BS-690981 | Rod-Push (Exhaust) | | | |

- Engine Gasket Set Ref. 358
- ♦ Valve Gasket Set Ref. 1095
- ♣ Carburetor Overhaul Kit Ref. 121

Notes



To order replacement parts, call a Customer Support Representative at (800) 965-4CUB.
Locate your nearest Cub Cadet dealer at (877) 282-8684
or visit www.cubcadet.com to find the nearest Cub Cadet dealer in your area.

CUB CADET LLC, P.O. BOX 361131 CLEVELAND, OHIO 44136-0019
