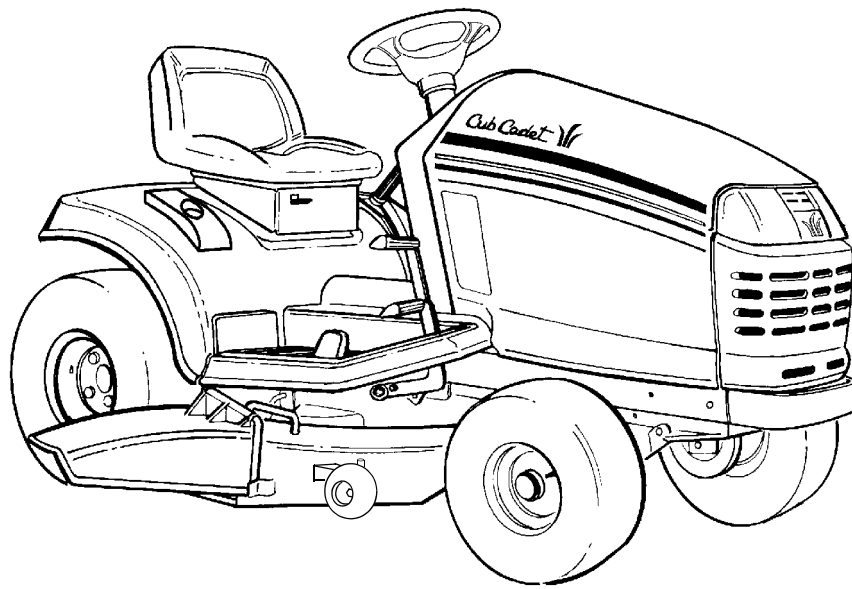


Cub Cadet

Parts Manual



SERIES 2500

TRACTOR

Model Number
GT 2521

CUB CADET LLC P.O. BOX 361131 CLEVELAND, OHIO 44136-0019 [www.cubcadet.com]

PRINTED IN U.S.A.

FORM NO. 769-01032
(1/04)

MODEL GT2521

TABLE OF CONTENTS

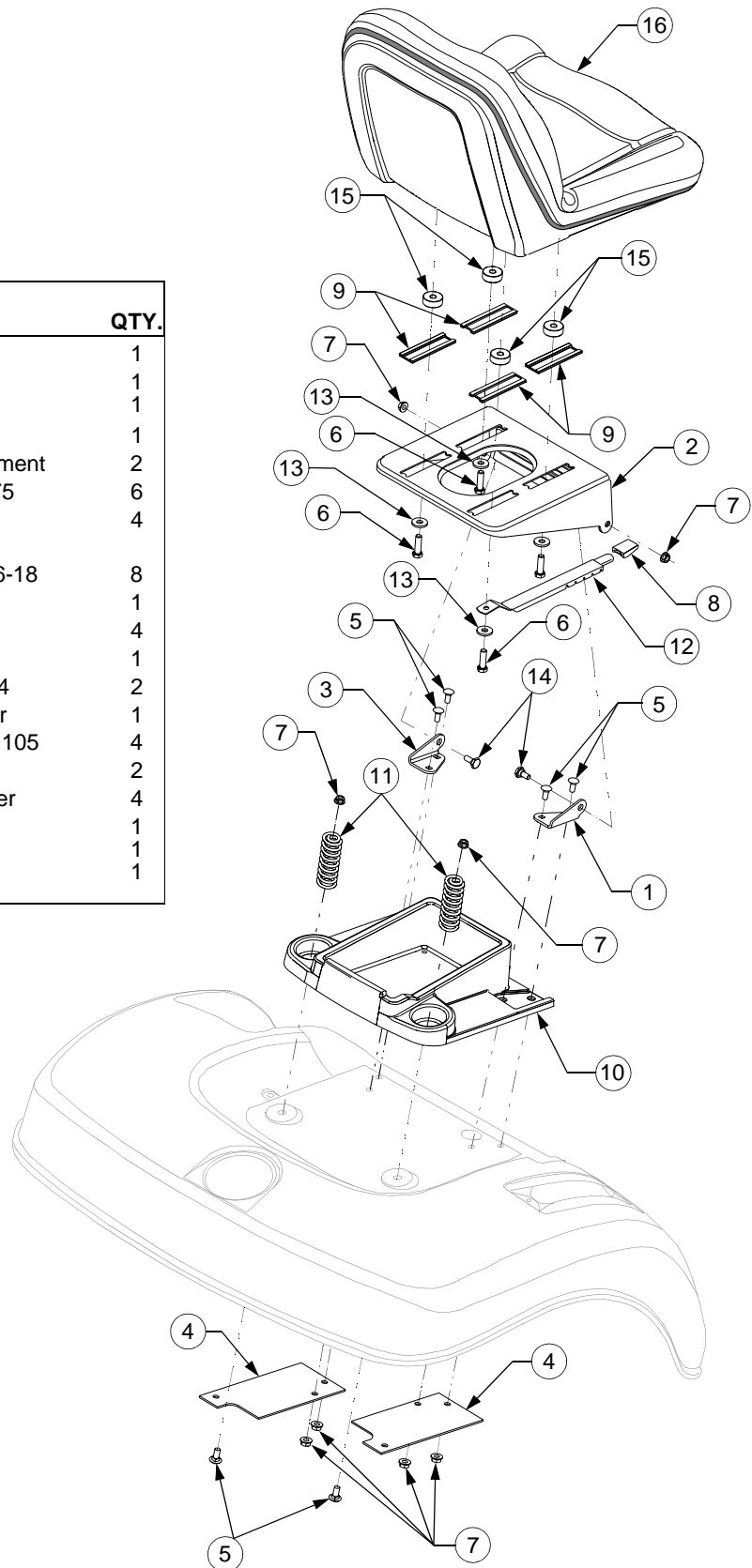
DESCRIPTION	PAGE	DESCRIPTION	PAGE
Axle, Front	29	Engine Mounting	20
Battery	16	Fender	32
Brakes	4	Frame	18
Bulkhead	15	Fuel Tank	19
Controls		Grille	30
Engine	15	Hood	30
Pedal	4	Hydraulic Filter	14
Transmission	8	Hydraulic Linkage	14
Dash Panel	15	Hydrostatic Pump, Model BDU-10L-225	12
Drawbar	18	Implement Lift Handle	34
Drive Line	9	Implement Lift Hanger	35
Electrical		Muffler	20
Switches	16	PTO Clutch	19
Wiring	16	Running Board	32
Engine		Seat	3
Air Filter	25	Side Panels	30
Blower Housing	21	Steering	6
Carburetor	24	Transmission, Hydro	10
Controls	24	Wheels, Front & Rear	40
Crankcase	22	48" Mower Deck	36
Crankshaft	22		
Cylinder Head	22		
Electrical	26		
Intake Manifold	26		
Flywheel	26		
Fuel System	25		
Oil Pan	22		
Starter	27		
Valves	22		
Gasket Kits	28		

NOTE: For **painted parts**, please refer to the list of color codes below. Please add the applicable color code, wherever needed, to the part number to order a replacement part.

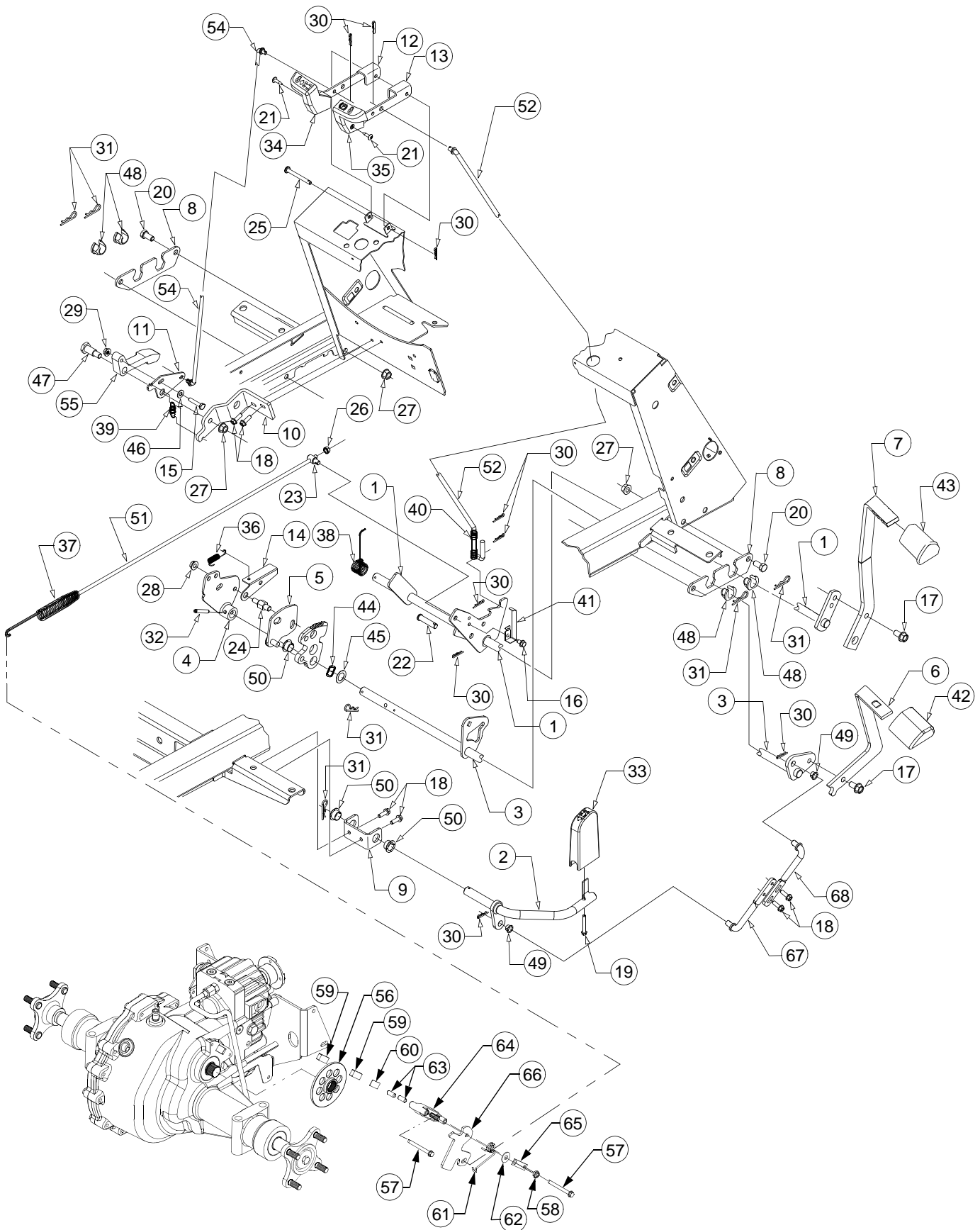
For instance, if a part, numbered 700-xxxx, is painted Cub Yellow, the part number to order would be 700-xxxx-0716.

Cub Yellow: 0716
Cub Beige: 0499
Cub Blue: 0685
Powder Black: 0637

REF. NO.	PART NUMBER	DESCRIPTION	QTY.
1	703-2394	Bracket, RH Seat Pivot	1
2	703-2395A	Seat, Base	1
	777I20310	Graphic, Seat Adjuster	1
3	703-2477	Bracket, LH Seat Pivot	1
4	703-2628	Bracket, Fender Reinforcement	2
5	710-0451	Bolt, Carriage, 5/16-18 x .75	6
6	710-3120	Screw, Hx Cap Lock, 3/8-16 x 1.5 GR5	4
7	712-04054	Nut, Hex Flange Lock, 5/16-18	8
8	720-0426	Knob, Seat Adjuster	1
9	731-3154	Slide, Seat	4
10	731-3162	Tray, Tool	1
11	732-3080A	Spring, Comp, 1.9 OD x 2.4	2
12	732-04100	Index Spring, Seat Adjuster	1
13	736-3052	Washer, Flat, .406 x 1.0 x .105	4
14	738-0140	Bolt, Shoulder	2
15	738-04013A	Spacer, Seat Slide Shoulder	4
16	757-04005	Seat, High Back	1
	777D06883	Graphic, Seat Back	1
	777D01782	Graphic, Made in USA	1



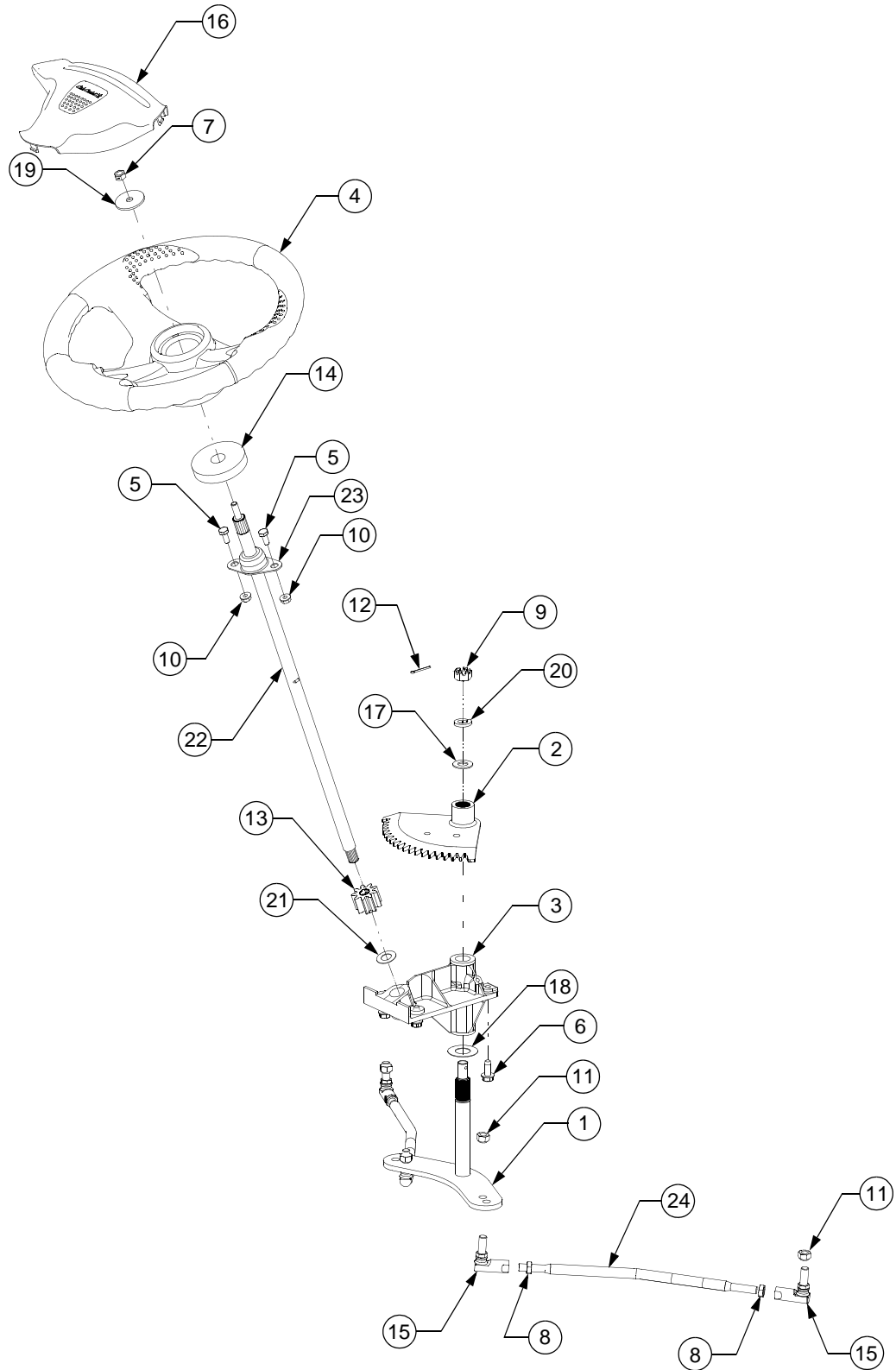
BRAKE AND CONTROL PEDALS



BRAKE AND CONTROL PEDALS

REF. NO.	PART NUMBER	DESCRIPTION	QTY.	REF. NO.	PART NUMBER	DESCRIPTION	QTY.
1	603-0321A	Shaft Assy, Brake	1	35	731-3207	Knob, Brake Lock	1
2	603-0412	Pedal Assy, Reverse	1	36	732-0418	Spring, Extension, .38 OD x 2.1	1
3	603-0697	Shaft Assy, Forward/Reverse	1	37	732-0463A	Spring, Extension	1
4	603-0419	Cam Assy, Control	1	38	732-0756A	Spring, Torsion	1
5	603-0421A	Plate Assy, Disengagement	1	39	732-04006	Spring, Extension, .6 OD x 1.34	1
6	703-2570A	Pedal, Forward	1	40	732-3099	Spring, Compression, .50 x 2.23	1
7	703-2573A	Pedal, Brake	1	41	732-3117	Spring, Switch Actuator	1
8	703-2804	Plate, Bearing Mounting	2	42	735-3048	Pad, Forward Foot Control	1
9	703-2938	Bracket, Reverse Pivot	1	43	735-3049	Pad, Brake Foot	1
10	703-2941	Bracket, Cruise	1	44	736-0174	Washer, Wave, .625 x .885 x .015	1
11	703-2942	Plate, Rod Adjustment	1	45	736-0349	Washer, Flat, .635 x 1.0 x .020	1
12	703-2962	Lever, Cruise	1	46	736-0463	Washer, Flat, 1/4 x .63 x .051	1
13	703-2963	Lever, Brake Lock	1	47	738-0145	Shoulder Bolt, .50 OD x .840	1
14	703-2965	Actuator, Reverse Switch	1	48	741-3065B	Bearing, Hex Flange Split	4
15	710-0106	Screw, Hex Cap, 1/4-20 x 1.25	1	49	741-3073	Bearing, Flange, .375 x .58 x .25	2
16	710-0599	Screw, Hex Wash Hd Tapp 1/4-20 x .5	1	50	741-3074	Bearing, Flange, .626 x .93 x .344	3
17	710-0623	Screw, Hex Wash Hd Tapp 3/8-16x .75	2	51	747-3392A	Rod, Brake	1
18	710-0642	Screw, Hex Wash Hd Tapp 1/4-20x .75	6	52	747-3219	Rod, Parking Brake	1
19	710-0796	Screw, Truss Mach, #12 x 1.5	1	54	747-3307	Rod, Cruise	1
20	710-0216	Screw, Hex Cap, 3/8-16 x .75 GR5	2	55	748-3060	Latch, Cruise	1
21	710-3009	Screw, Phil Hd Pan, #10-24 x .75	2	56	761-0215	Disc, Brake	1
22	711-0415	Pin, Clevis, 3/8 x 1.62	1	57	710-1206	Screw, Hex Wash Hd, Tapp, 1/4-20 x 2.375	2
23	711-0736	Ferrule, Adjustment, 1/4-20 Thrd	1	58	712-0273	Nut, Hex Nylon Lock, 5/16-24	1
24	711-1138	Stud, Actuator	1	59	717-0678	Pad, Brake	2
25	711-3295	Pin, Clevis, .25 x 2.38	1	60	717-0682	Plate, Puck	1
26	712-0271	Nut, Hex Sems, 1/4-20	1	61	732-0925	Spring, Torsion	1
27	712-0431	Nut, Hex Flange Lock, 3/8-16	3	62	736-0371	Washer, Flat, .343 x .88 x .062	1
28	712-3004A	Nut, Hex Flange Lock, 5/16-18	1	63	741-0343	Pin, Brake Actuating	2
29	712-3027	Nut, Hex Flange Lock, 1/4-20	1	64	761-0207A	Yoke, Brake	1
30	714-0104	Pin, Internal Cotter, 5/16 Dia x 1.12	9	65	761-0208	Bracket, Brake Anti Rotation	1
31	714-0145	Pin, Internal Cotter, 3/8 Dia x 1.62	6	66	761-3074	Arm, Brake Actuator	1
32	715-0114	Pin, Spiral Spring, 1/4 x 1.5	1	67	747-3341A	Rod, Rear Connecting	1
33	731-3205	Pedal, Reverse	1	68	747-3383	Rod, Front Connecting	1
34	731-3206	Knob, Cruise	1				

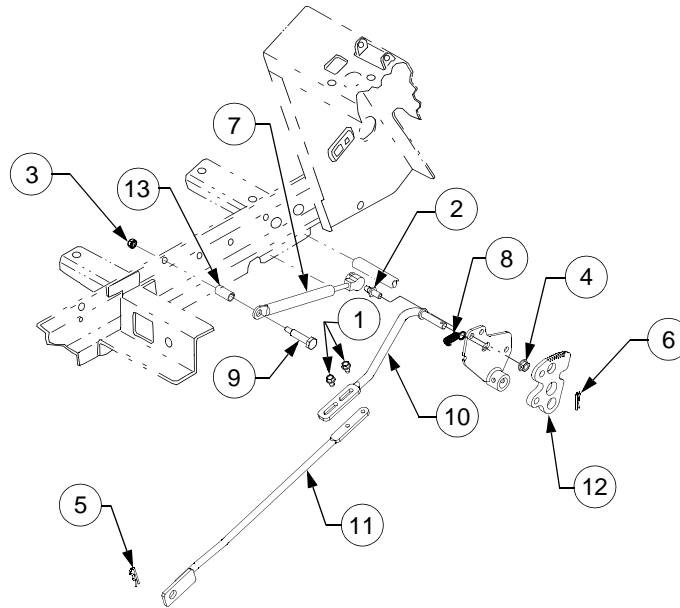
STEERING



STEERING

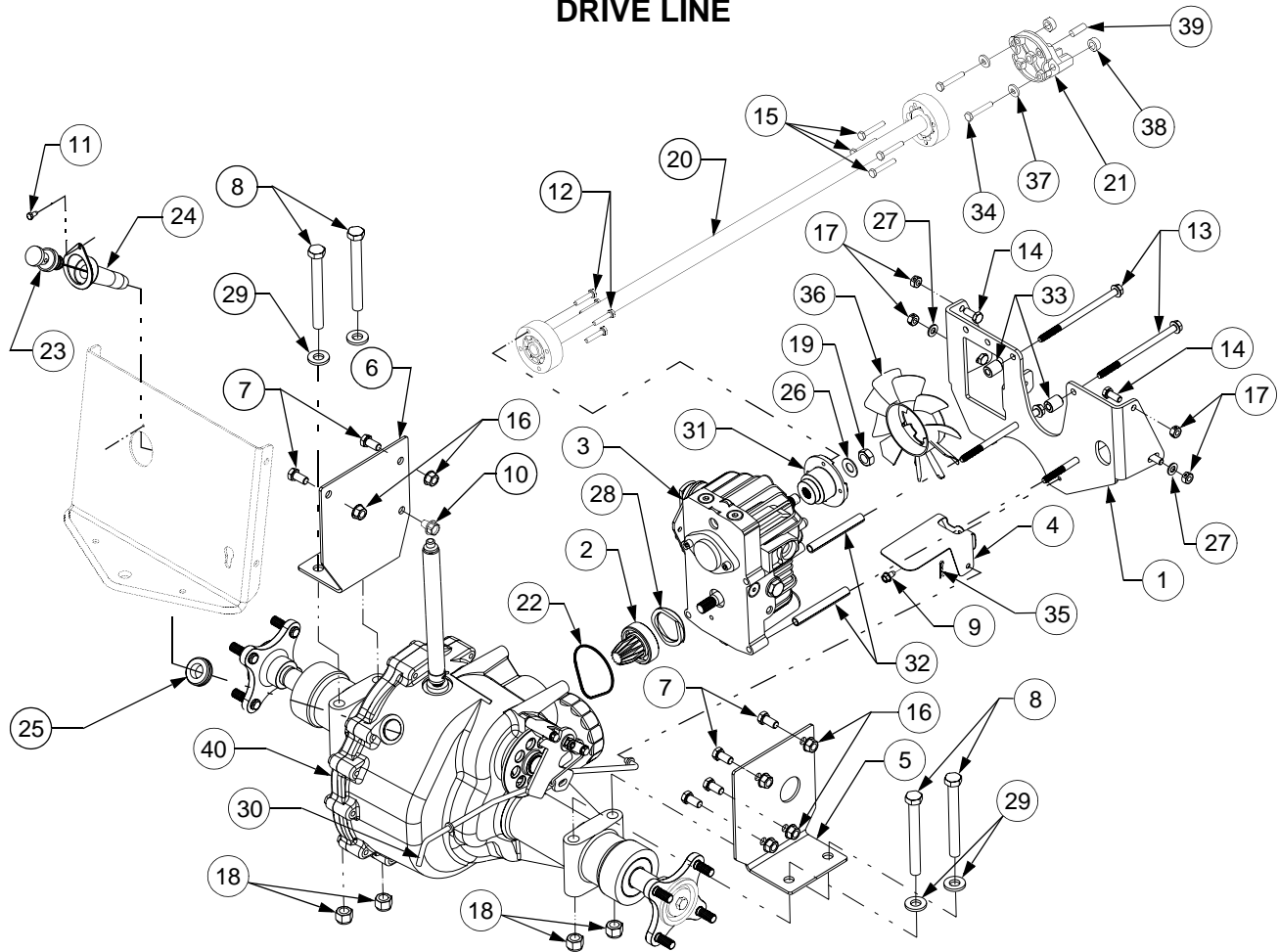
REF. NO.	PART NUMBER	DESCRIPTION	QTY.
1	603-0064	Arm Assy, Lower Steering	1
2	603-0250	Segment Assy, 18T Steering	1
3	619-04079	Housing Assy,	1
	737-3000	Fitting, Grease, 3/16 Drive Type	1
	748-0108	Bearing, Flange, .503 ID	1
	748-3007A	Bearing, Bronze Flange, .75 ID	2
4	631-04008	Wheel, Steering, Soft Grip	1
5	710-0751	Screw, Hex Cap, 1/4 - 20 x .62, GR5	2
6	710-1260A	Screw, Hex Wash. Hd. Tapp 5/16 - 18 x .75	4
7	712-0237	Nut, Hex Center Lock, 5/16-18	1
8	712-0711	Nut, Hex Jam, 3/8-24 GR2	4
9	712-3012	Nut, Hex Slotted, 1/2-20 GR5	1
10	712-3027	Nut, Hex Flange Lock, 1/4-20	2
11	712-3054	Nut, Hex Lock, 3/8-24 GR5	4
12	714-3004	Pin, Cotter, 3/32 Dia x 1.25	1
13	717-04086	Pinion, Steering	1
14	722-3019	Gasket, Steering	1
15	723-0156	Joint, Ball, 3/8-24	4
16	731-04532	Cover, Steering Wheel	1
17	736-0272	Washer, Flat, .510 x 1 x .06 Thk	1
18	736-0351	Washer, Flat, .760 x 1.5 x .03 Thk	1
19	736-04062	Washer, Flat, .344 x 1.5 x .1 Thk	1
20	736-0921	Washer, Lock, 1/2	1
21	736-3013	Washer, Flat, .531 x 1 x .027 Thk	1
22	738-04064	Shaft, Steering	1
23	741-3025	Bearing, Flange	1
25	747-3171	Rod, Tie	2

TRANSMISSION CONTROLS



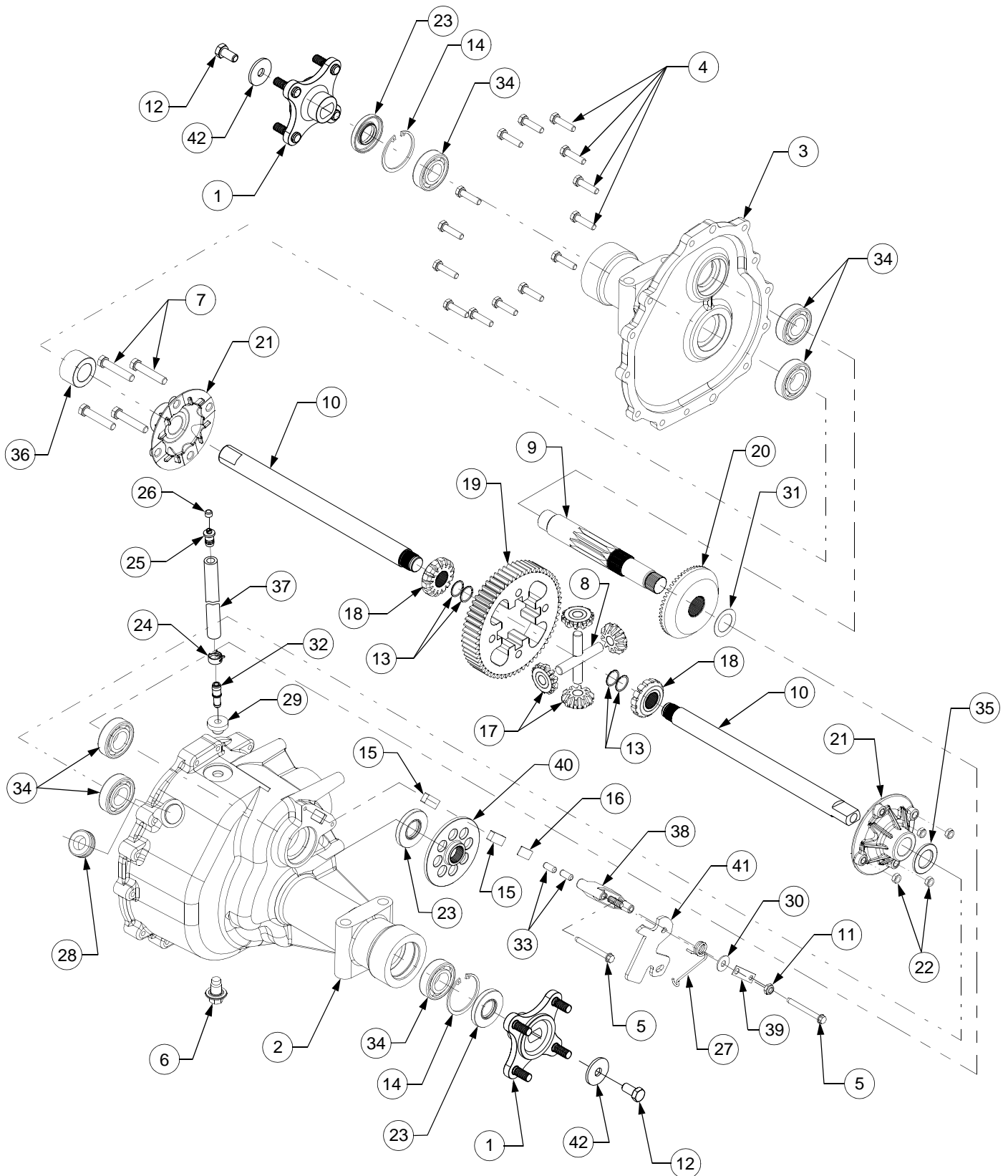
REF. NO.	PART NUMBER	DESCRIPTION	QTY.
1	710-0642	Screw, Hex Wsh Hd Tapp, 1/4-20 x .75	2
2	710-3170	Screw, Ball, 5/16-18 x.56	1
3	712-0271	Nut, Hex Sems, 1/4-20	1
4	712-3004A	Nut, Hex Flange Lock, 1/4-20	1
5	714-0101	Pin, Internal Cotter	1
6	714-0104	Pin, Internal Cotter	1
7	727-3090	Cylinder, Damper	1
8	732-3118	Spring, Extension, 3/8 OD x 1.44	1
9	738-0560	Bolt, Shoulder, .374 Dia x 1.375	1
10	747-3304	Rod, Front Control	1
11	647-3003	Rod, Rear Hydro Control	1
12	748-3070	Plate, Cruise	1
13	750-0434	Spacer, Split Tubing, .375 ID x 1.04	1

DRIVE LINE



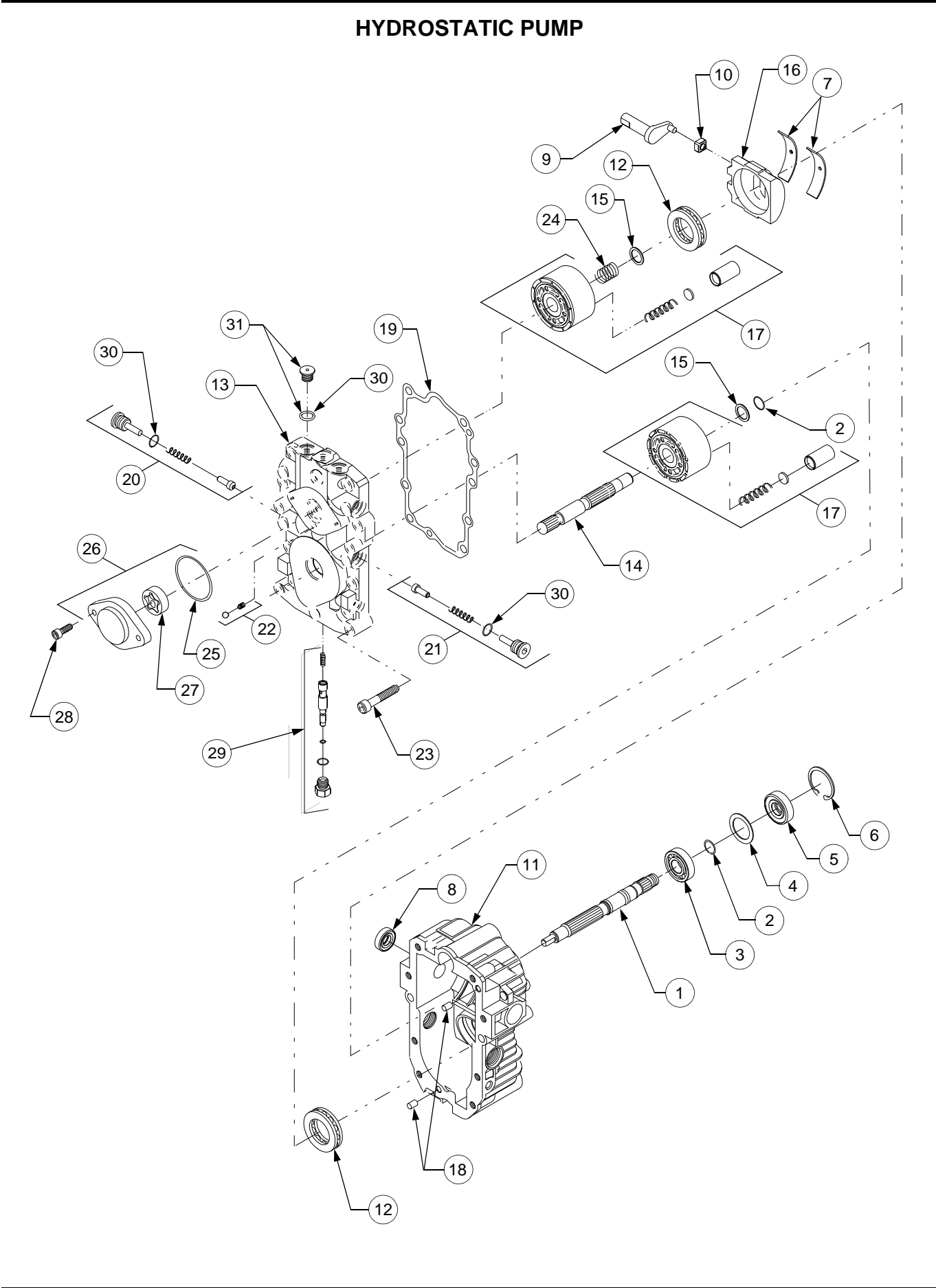
REF. NO.	PART NUMBER	DESCRIPTION	QTY.	REF. NO.	PART NUMBER	DESCRIPTION	QTY.
1	603-0707	Bracket, Torque	1	22	721-0519	Seal, Gland	1
2	617-3002	Gear Assembly, Pinion	1	23	727-3195	Dipstick, Transmission	1
3	618-3243	Transmission, Hydrostatic	1	24	731-3294	Holder, Dipstick	1
4	703-4093	Spring Plate, Hydro Dump	1	25	735-0277A	Grommet, Rubber, .75 x 1.063	1
5	703-4096	Plate, RH Transmission Flange	1	26	736-0253	Washer, Belleville	1
6	703-4097	Plate, LH Transmission Flange	1	27	736-0275	Washer, Flat, .344 x .688 x .065	2
7	710-0216	Screw, Hex Cap, 3/8-16 x .75 GR5	6	28	736-0619	Washer, Spring	1
8	710-0465	Screw, Hex Cap, 1/2-20 x 4.5 GR5	4	29	736-3019	Washer, Flat, .531 x 1.062 x .134	4
9	710-0599	Scrw, Hx Wsh Hd Tapp, 1/4-20 x .5	1	30	747-3147	Rod, Hydro Dump Valve	1
10	710-0773	Scrw, Hx Wsh Hd Tapp, 3/8-16 x .5	1	31	748-3093	Adapter, Hydro Pump	1
11	710-0919	Scrw, Hx Wsh Hd Tapp, 10-16 x .44	1	32	750-3349	Spacer, Hydro, .323 x .443 3.51	2
12	710-1062	Screw, Hex Patch, 1/4-20 x 1.25 GR5	4	33	750-3350	Spacer, Hydro, .323 x .600 x .74	2
13	710-1888	Scrw, Hx Hd Tapp, 5/16-18 x 5.25	4	34	710-3180	Screw, Hex Cap, 5/16-18 x 1.75 GR5	2
14	710-3008	Screw, Hex Cap, 5/16-18 x .75 GR5	4	35	714-0104	Internal Cotter Pin	1
15	710-3288	Screw, Hex Patch, 1/4-20 x 1.62 GR5	4	36	731-3297	Fan, Pump	1
16	712-0431	Nut, Hex Flange Lock, 3/8-16	6	37	736-3008	Washer, Flat, .344 x .75 x .12	2
17	712-3009	Nut, Hex Cntr Lock, 3/8-16	4	38	750-0507	Spacer, .38 x .625 x .275	2
18	712-3058	Nut, Hex Nylon Lock, 1/2-20 GR2	4	39	711-3330	Pin, Locating, .352 Dia x 1.156	1
19	712-3059	Nut, Hex Top Lock Jam, 1/2-20	1				
20	717-04125	Shaft, Drive, 31.75 Lg	1	40		Transmission Assembly, Hydro — See Pages 10-11 for Parts Info.	1
21	719-3096	Adapter, Engine	1				

HYDRO TRANSMISSION



HYDRO TRANSMISSION

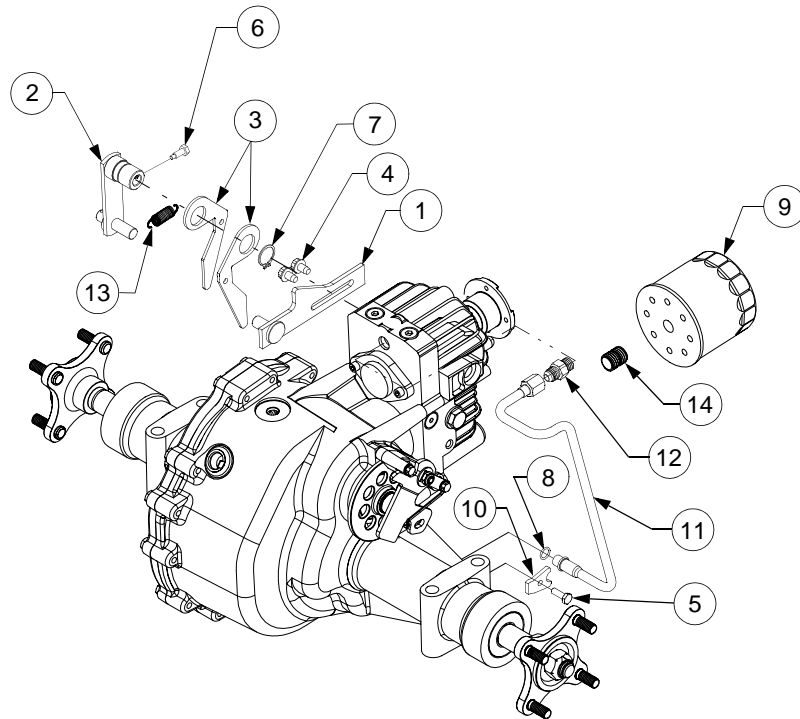
REF. NO.	PART NUMBER	DESCRIPTION	QTY.
	618-04176	Transmission Assembly, Hydro — Does not include Ref Nos. 1 and 12	1
1	618-04115	Hub Assembly, Wheel	2
2	619-3071A	Housing, RH Transmission	1
3	619-3072	Housing, LH Transmission	1
4	710-0573	Screw, Hex Cap Lock, 5/16-18 x 1.25 GR5	14
5	710-1206	Screw, Hex Wash Hd. Tapp, 1/4-20 x 2.375	2
6	710-1633	Screw, Plug, M14 x 1.5 x .827	1
7	710-3144	Screw, Hex Cap Lock, 3/8-16 x 2.0 GR5	4
8	711-1052A	Shaft, Cross, .50 x 3.005	2
9	711-1385A	Shaft, Output, 9T	1
10	711-04233	Shaft, Axle	2
11	712-0273	Nut, Hex Nylon Lock, 5/16-24	1
12	710-3119	Screw, Hex Cap Lock, 3/8-16 x .75 GR5	2
13	716-04032	Ring, Retaining	4
14	716-0204	Ring, Retaining	2
15	717-0678	Pad, Brake	2
16	717-0682	Plate, Puck	1
17	717-1446	Gear, Miter, 10T	4
18	717-04102	Gear, Miter, 14T	2
19	717-1568A	Gear, Differential Spur, 60T	1
20	717-3449	Gear, Bevel, 54T	1
21	719-0375A	Housing, Differential w/Thru Holes	2
22	712-3020	Nut, Hex Insert Jam GR5, 3/8-16	4
23	721-0523	Seal, Oil, 1.0 x 2.047 x .2755	3
24	726-0324	Clamp, Hose	1
25	731-1480	Vent, Plastic	1
26	731-1481	Cap, Plastic Vent	1
27	732-0925	Spring, Torsion	1
28	735-0277A	Grommet, Rubber, .75 x 1.063	1
29	735-0279	Grommet, Rubber, .362 x .56	1
30	736-0371	Washer, Flat, .343 x .88 x .062	1
31	736-0615	Washer, Thrust, 1.007 x 1.542 x .03	1
32	737-3092	Fitting, Tube	1
33	741-0343	Pin, Brake Actuating	2
34	741-3114	Bearing, Ball (6205-1)	6
35	750-3346	Spacer, Axle, 1.007 x 1.665 x .141	1
36	750-3358	Spacer, Axle, 1.007 x 1.665 x .989	1
37	751-0588-8	Tube, Transmission Breather	1
38	761-0207A	Yoke, Brake	1
39	761-0208	Bracket, Brake Anti Rotation	1
40	761-0215	Disc, Brake	1
41	761-3074	Arm, Brake Actuator	1
42	736-0227	Washer, Flat, .39 x 1.5 x .134	2
	759-3958	Sealant, Loctite Black, 5.3 oz. Tube	1
	737-3120	Drive System Fluid Plus - Quart	5.5
	737-3121	Drive System Fluid Plus - Gallon	AR



HYDROSTATIC PUMP

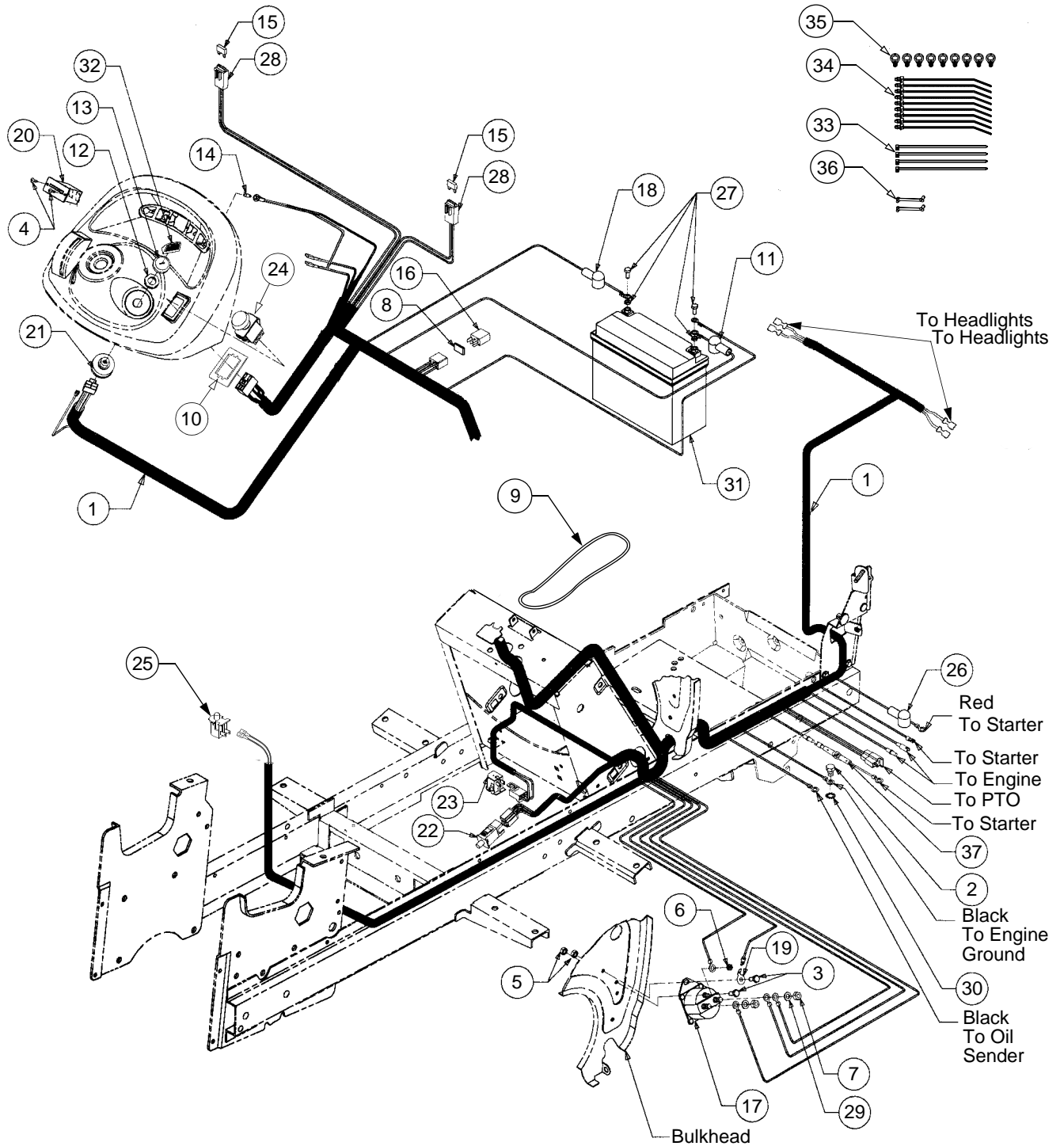
REF. NO.	PART NUMBER	DESCRIPTION	QTY.
1	HG-50158	Shaft, Pump (Splined)	1
2	HG-2003016	Ring, Retaining	2
3	HG-2003043	Bearing, Ball	1
4	HG-2003018	Spacer	1
5	HG-9008000-0128	Seal, Lip	1
6	HG-2003052	Ring, Retaining	1
7	HG-2003023	Bearing, Cradle	2
8	HG-9008000-0126	Seal, Lip	1
9	HG-2003005	Arm, Trunnion	1
10	HG-2000015	Guide, Slot	1
11	HG-2513036	Housing Kit	1
12	HG-2003044	Bearing Assembly, Thrust Ball	2
13	HG-51077	Center Section Kit	1
14	HG-2003034	Shaft, Motor	1
15	HG-2003017	Washer, Block Thrust	2
16	HG-2003087	Swash Plate	1
17	HG-70079	Block Assembly	2
18	HG-9004800-2506	Pin	2
19	HG-2003060	Gasket, Center Section	1
20	HG-2510027	Kit, Check Valve	1
21	HG-2510034	Kit, Orificed Check Valve	1
22	HG-2510011	Kit, Charge Relief Valve	1
23	HG-9007314-0808	Screw, Socket Hd	8
24	HG-2003014	Spring, Block	1
25	HG-9004101-1340	O-Ring	1
26	HG-2513027	Kit, Charge Pump	1
27	HG-J1041008	Gerotor Assy	1
28	HG-50095	Screw, Socket Hd	2
29	HG-2513011	Bypass Valve Kit	1
30	HG-9004201-3700	O-Ring	3
31	HG-9005110-5600	Plug w/O-Ring	2

NEUTRAL LINKAGE, HYDRAULIC PICKUP AND RETURN TUBES



REF. NO.	PART NUMBER	DESCRIPTION	QTY.
1	603-0732	Bracket, Neutral Return	1
2	603-0737	Arm Assembly, Control	1
3	703-2441	Arm, Neutral	2
4	710-0607	Screw, Hex Wash Hd Tapp, 5/16-18 x .50	2
5	710-3015	Screw, Hex Cap, 1/4-20 x .75 GR5	1
6	710-04171	Screw, Special Hex Cap, 5/16-24 x .625	1
7	716-0111	Ring, Snap, .875 Shaft	1
8	721-0459	O-Ring, .426 ID x .566 OD x .07	1
9	723-3014	Filter, Oil	1
10	726-0295	Clamp, Tube, .50	1
11	727-0636	Tube, Hydro Pickup	1
12	727-3002	Fitting, Hydraulic	1
13	732-3119	Spring, Extension	1
14	737-3022	Nipple, Oil Filter	1

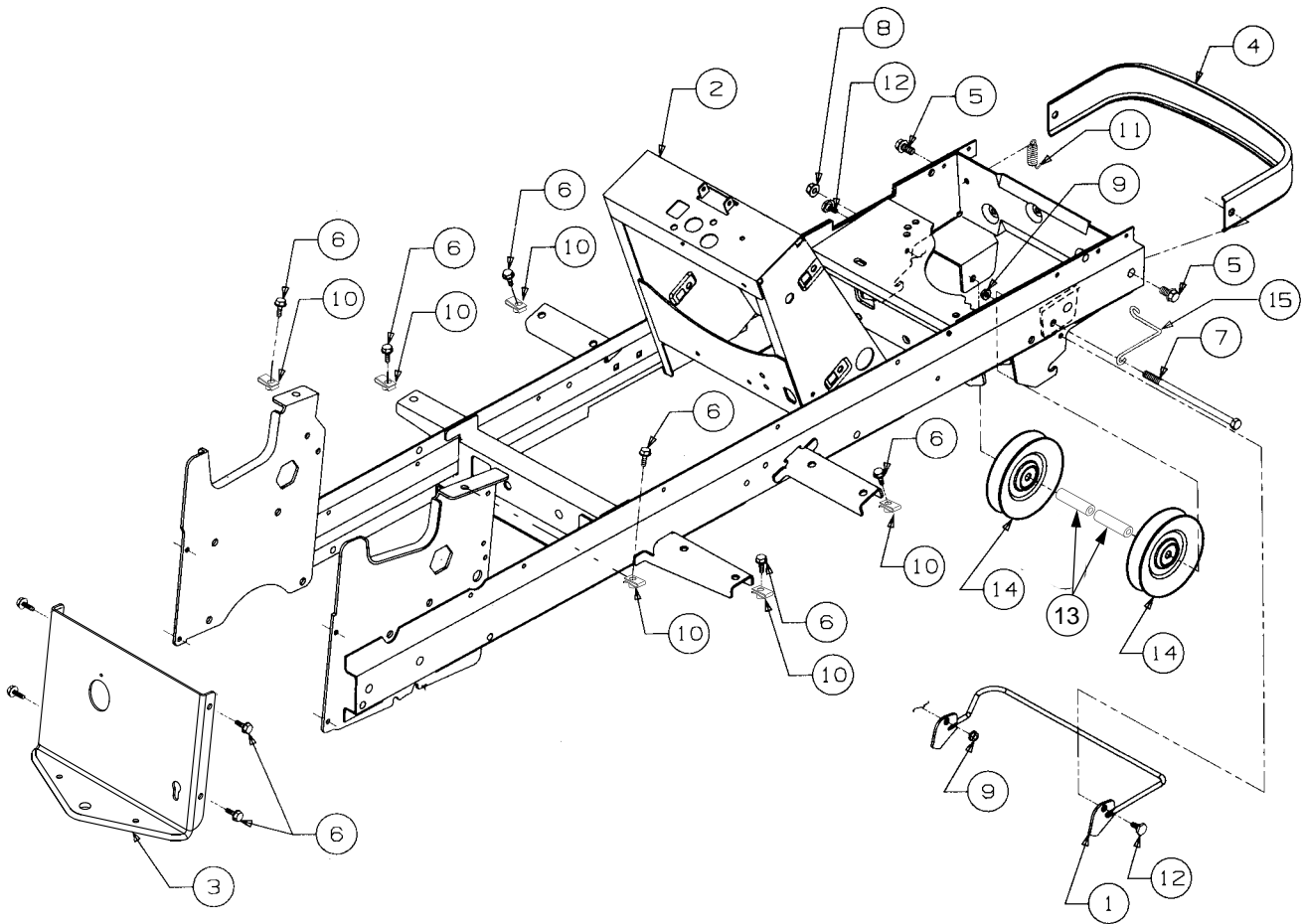
BATTERY, ELECTRICAL COMPONENTS AND SWITCHES



BATTERY, ELECTRICAL COMPONENTS AND SWITCHES

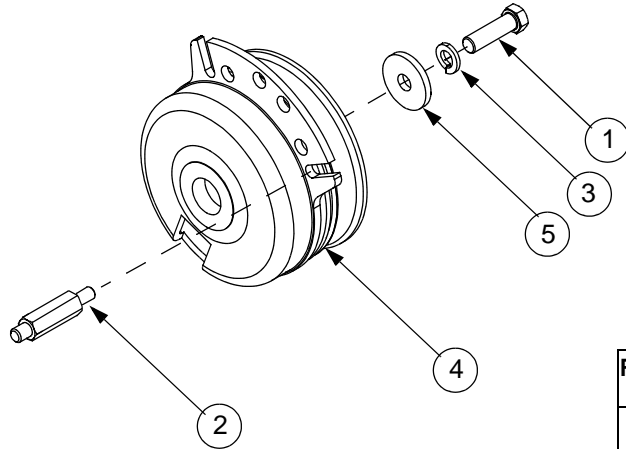
REF. NO.	PART NUMBER	DESCRIPTION	QTY.
1	629-3067	Wire Harness, Main	1
2	710-0168	Screw, Hex Cap, 3/8-16 x .50	1
3	710-0751	Screw, Hex Cap, 1/4-20 x .625	2
4	710-0936	Screw, Truss Hd Tapp, #6 x .62	2
5	712-0271	Nut, Hex Sems, 1/4-20	2
6	712-3071	Nut, Hex Sems, #10-32	1
7	712-3010	Nut, Hex, 5/16-18 GR5	2
8	721-0342	Gasket, Silicone	1
9	723-04016	Strap, Battery Retainer	1
10	783-0462	Bracket, PTO Switch Retainer	1
11	725-0340	Cover, Terminal Black	1
12	725-1346	Nut, Ignition Switch	1
13	725-1347	Cap, Ignition Switch	1
14	725-1365	Bulb, Indicator	1
15	725-3243	Fuse, 25 Amp	2
16	725-1648	Relay	1
17	725-3001	Solenoid, Starter	1
18	725-3007A	Cover, Terminal Red	1
19	725-3147	Lug, Quick Connect	1
20	725-3159	Hour Meter	1
21	725-3163	Switch, Ignition	1
22	725-3164A	Switch, Interlock (Brake)	1
23	725-3166	Switch, Snap Mount - Normally Closed	1
24	725-3233	Switch, PTO	1
25	725-3166	Switch, Seat	1
26	725-3237	Cover, Terminal Red	3
27		Battery Cable Hardware	
	710-3015	Screw	2
	712-0271	Sems Nut	2
28	729-0357	Holder, Fuse w/Mounting Clip	2
29	736-0119	Washer, Lock, 5/16	2
30	736-0148	Washer, External Lock, 3/8	1
31	725-1707D	Battery	1
32	759-3476A	Key, Ignition (Set of 2)	1
33	725-0157	Tie, Self-Clinch Cable	4
34	726-0154	Tie, Pushmount	9
35	726-3055	Clip, Cable	9
36	726-0161	Clip, Cable	2
37	759-3689	Diode Assembly w/Lead	1

FRAME AND DRAWBAR



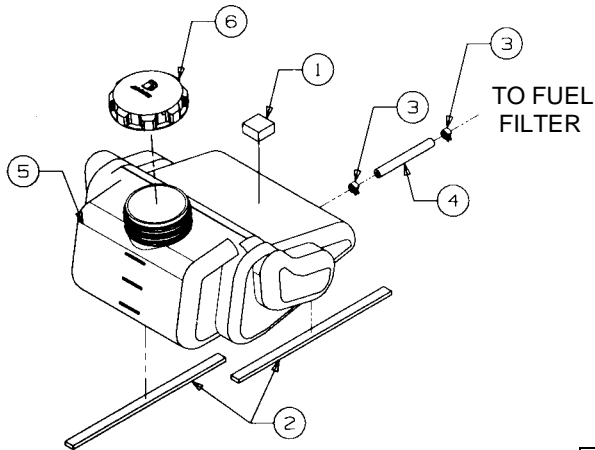
REF. NO.	PART NUMBER	DESCRIPTION	QTY.
1	603-0132	Rod, Quick Attach	1
2	603-0328C	Frame	1
3	703-3453	Drawbar	1
	777I20296	Graphic, Transmission Release Lever	1
	777S30265	Graphic, Transmission Oil	1
4	703-2577	Bumper	1
5	710-0623	Screw, Hex Wsh Hd Tapp 3/8-16 x .75	2
6	710-1260A	Screw, Hex Wsh Hd Tap 5/16-18 x .75	10
7	710-3261	Screw, Hex Cap, 3/8-16 x 7.0	1
8	712-0431	Nut, Hex Flange Lock, 3/8-16	1
9	712-3027	Nut, Hex Flange Lock, 1/4-20	2
10	726-0211	U-Nut, 5/16-18	6
11	732-3002	Spring, Latch	1
12	738-0255	Bolt, Shoulder	2
13	750-04198	Spacer, Idler, .411 x .720 x 3.67	2
14	756-3045	Pulley, Idler	2
15	732-0970	Belt Guide	1

PTO CLUTCH



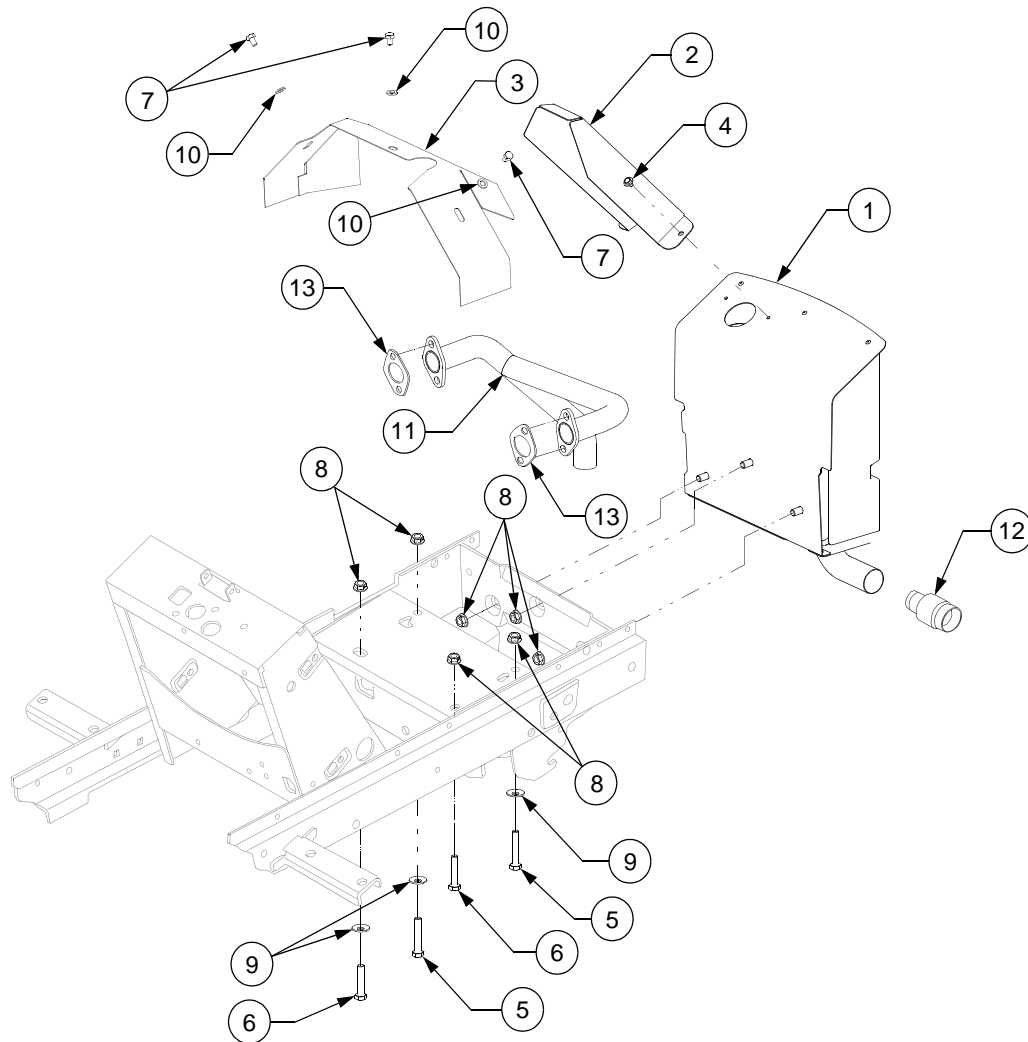
REF. NO.	PART NUMBER	DESCRIPTION	QTY.
1	710-1044	Screw, Hex Cap, 3/8-24 x 1.5 GR8	1
2	711-1197	Stud, Clutch Stop	1
3	736-0169	Washer, Lock, 3/8	1
4	717-3446	Clutch Assy, PTO	1
	711-3179	Spacer (Not Shown)	1
5	736-3082A	Washer, Flat, .445 x 1.5 x 1.72 Hdn	1

FUEL TANK



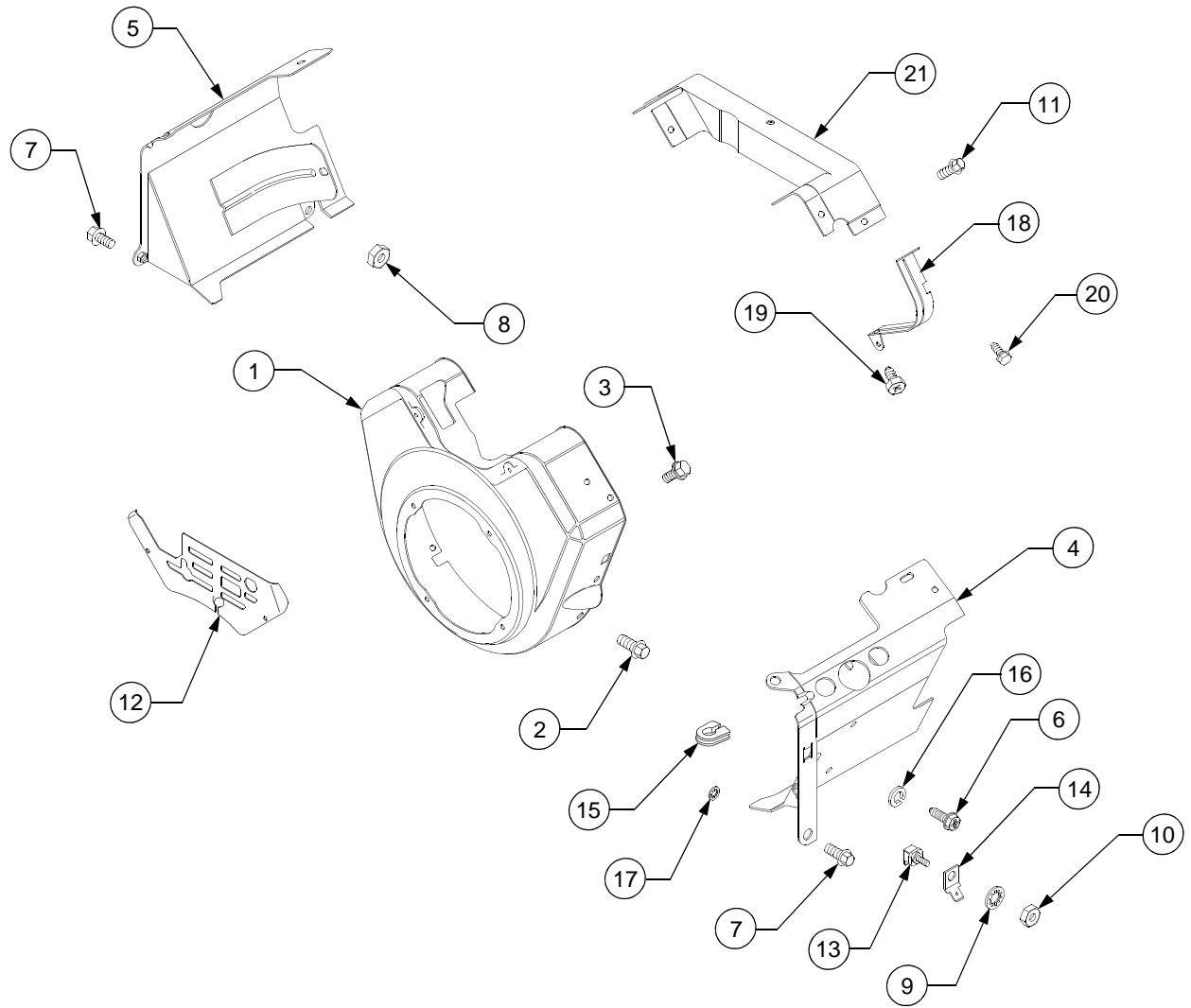
REF. NO.	PART NUMBER	DESCRIPTION	QTY.
1	722-3020	Foam, 1.25 Sq x .62 Thk	AR
2	722-3022	Tape, Foam, .625 Wide x .25 Thk	AR
3	726-0205	Clamp, Hose	2
4	759-3330	Line, Fuel, 70" (Shipped In 10ft Length)	1
5	751-3112B	Tank, Fuel	1
6	751-3124B	Cap, Fuel	1

ENGINE MOUNTING AND MUFFLER



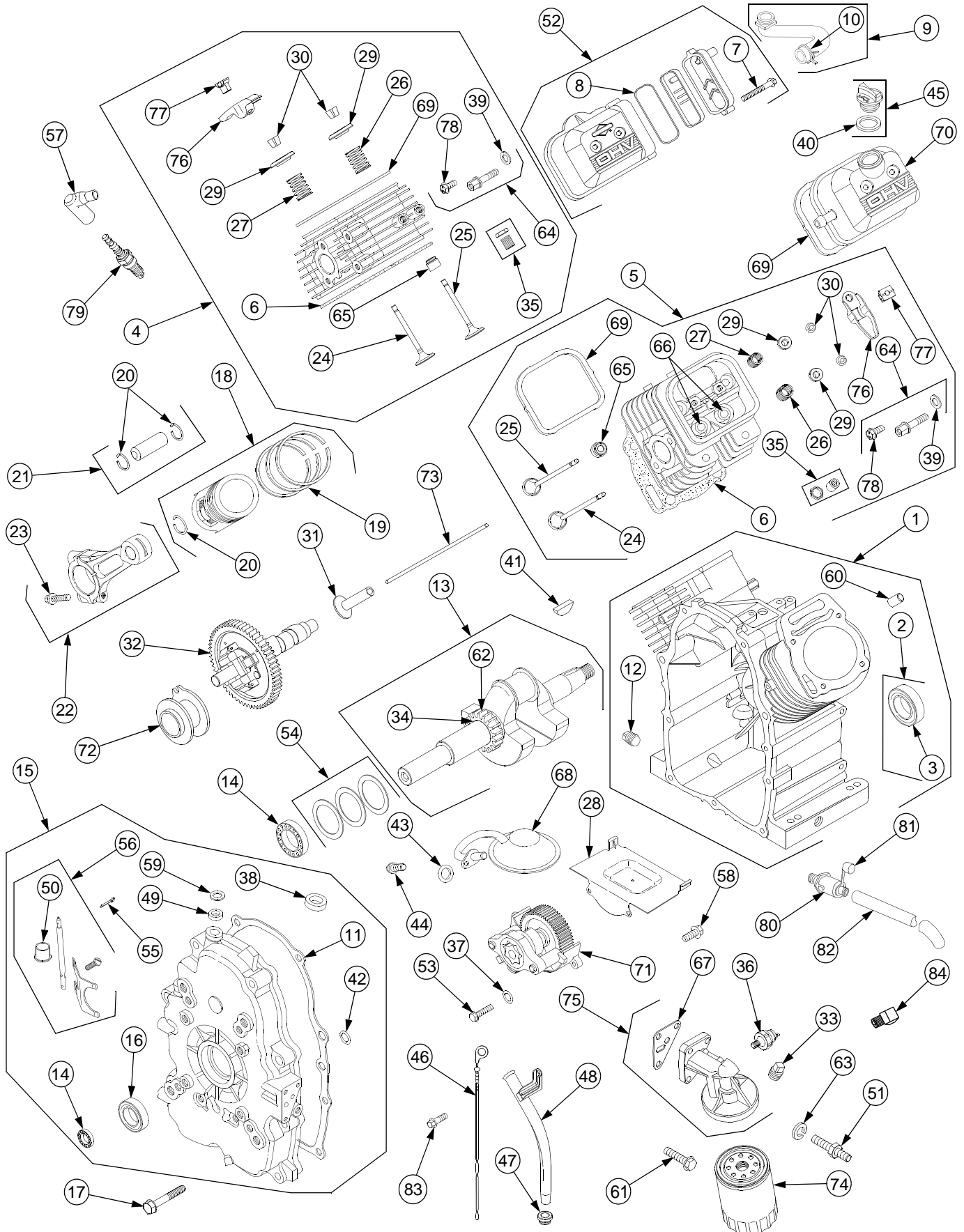
REF. NO.	PART NUMBER	DESCRIPTION	QTY.
1	651-3001	Muffler Assembly	1
2	703-3099	Shield, Muffler Tube	1
3	703-05475	Shield, Engine Heat	1
4	710-1268	Screw, Hex Wsh Hd Tap, #10-16 x .38	2
5	710-3180	Bolt, Eng Mount, 5/16-18 x 1.75 GR5	2
6	710-0805	Screw, Hex Cap, 5/16-18 x 1.5 GR5	2
7	710-3209	Screw, Hex Cap, M6-1.0 x 10 GR8.8	3
8	712-3004A	Nut, Hex Flange Lock, 5/16-18	7
9	736-0242	Washer, Bell, .345 x .88 x .060	4
10	736-0142	Washer, Flat, .281 x .5 x .063	3
11	751-10058	Tube, Exhaust	1
12	759-3744	Arrestor, Spark	1
13	BS-691613	Gasket, Exhaust	2

BLOWER HOUSING



REF. NO.	PART NUMBER	DESCRIPTION	QTY.	REF. NO.	PART NUMBER	DESCRIPTION	QTY.
1	BS-808651	Housing, Blower	1	12	BS-691533	Cover, Air Guide	1
2	BS-692062	Screw, Hex	AR	13	BS-691972	Insulator	1
3	BS-692056	Screw, Hex	1	14	BS-691084	Terminal, Ground	1
4	BS-841182	Cover, Cylinder #1	1	15	BS-690744	Grommet, Cable	1
5	BS-841232	Cover, Cylinder #2	1	16	BS-690706	Washer	1
6	BS-841233	Screw Hex	1	17	BS-691551	Washer	1
7	BS-692067	Screw Hex	1	18	BS-690714	Cover, Starter Drive	1
8	BS-690238	Nut, Hex	1	19	BS-690688	Screw	1
9	BS-691077	Washer	1	20	BS-692539	Screw, Hex	1
10	BS-691612	Nut	1	21	BS-841231	Cover, Air Guide	1
11	BS-692539	Screw, Hex	1				

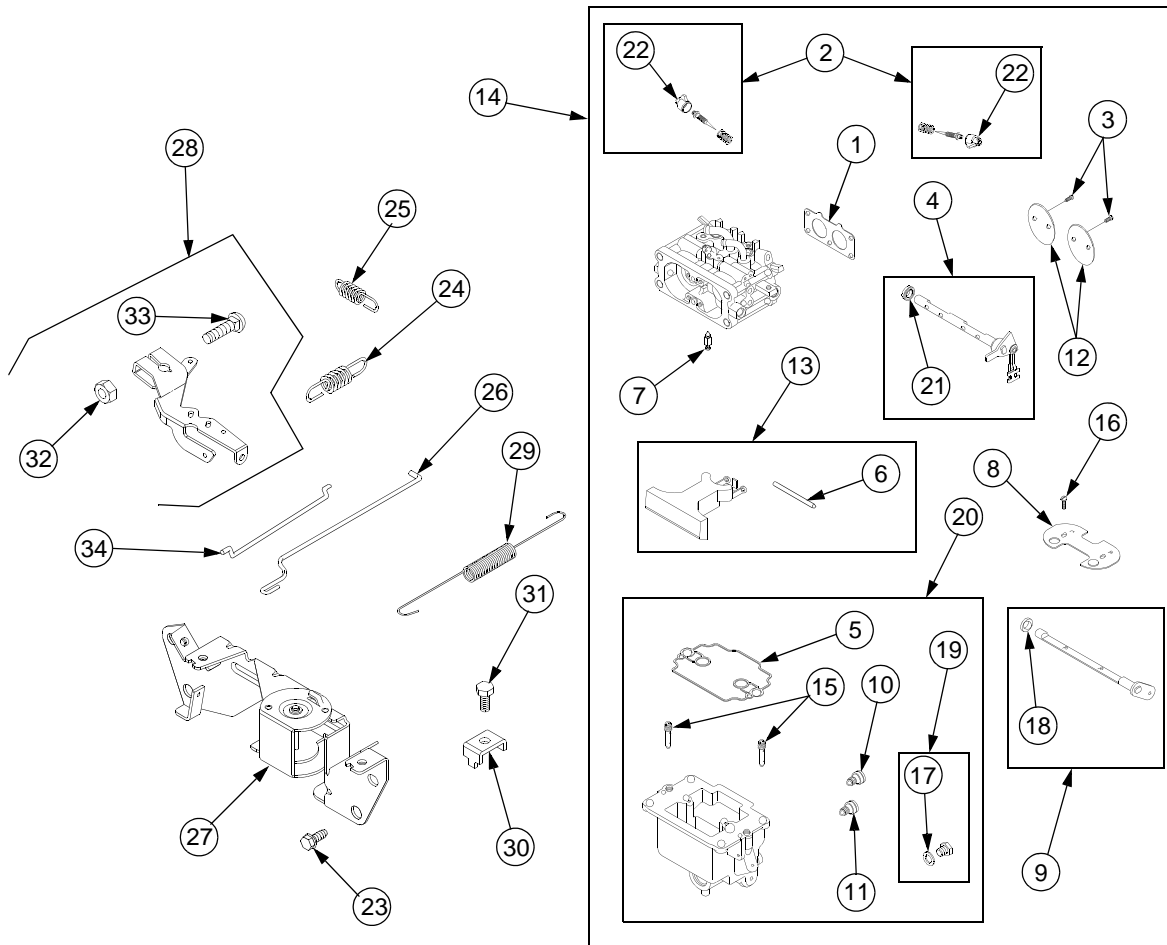
ENGINE ASSEMBLY



ENGINE ASSEMBLY

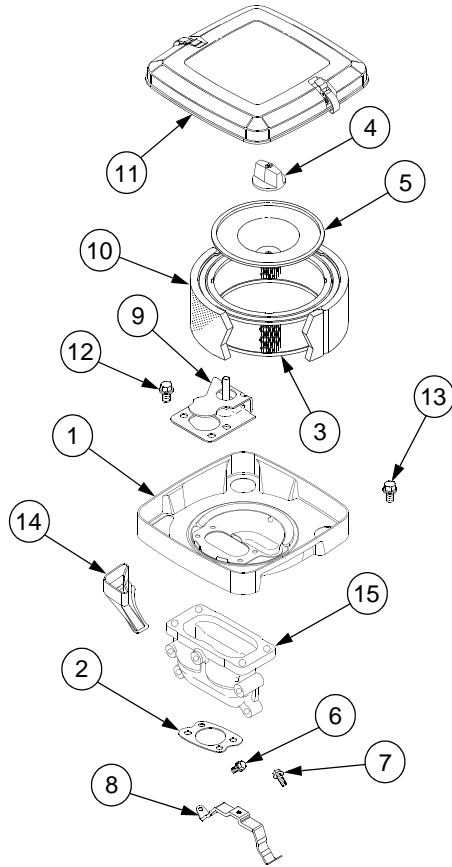
REF. NO.	PART NUMBER	DESCRIPTION	QTY.	REF. NO.	PART NUMBER	DESCRIPTION	QTY.
1	BS-808650	Cylinder Assembly	1	43	BS-690690	Seal, O-Ring	1
2	BS-808534	Kit, Bushing/Seal (Magneto Side)	1	44	BS-807084	Screw	1
3	BS-805101	Seal, Oil	1	45	BS-491832	Plug, Oil Fill	1
4	BS-808529	Head, Cylinder (#1)	1	46	BS-693175	Dipstick	1
	BS-806865	Screw	2	47	BS-693172	Seal, Dipstick Tube	1
5	BS-808530	Head, Cylinder (#2)	1	48	BS-693173	Tube, Dipstick	1
	BS-806865	Screw	2	49	BS-690701	Bushing, Governor Shaft	1
6	BS-806377	Gasket, Cylinder Head	2	50	BS-806686	Bushing, Governor Shaft	1
7	BS-806421	Screw	1	51	BS-690682	Stud, Oil Filter Adapter	1
8	BS-806466	Seal, O-ring	1	52	BS-808648	Cover, Rocker Arm	1
9	BS-806379	Tube, Breather	1	53	BS-691492	Screw	2
10	BS-691145	Clamp, Hose	1	54	BS-807625	Shim, End Play	AR
11	BS-691684	Gasket, Crankcase	1	55	BS-691550	Retainer, Governor Shaft	1
12	BS-690946	Plug, Oil Drain	1	56	BS-806685	Shaft, Governor	1
13	BS-809844	Crankshaft	1	57	BS-692076	Boot, Spark Plug	2
14	BS-690752	Bearing, Ball	1	58	BS-692539	Screw	1
15	BS-808849	Cover, Crankcase	1	59	BS-690680	Seal, Governor Shaft	1
16	BS-805049	Seal, Oil (PTO Side)	1	60	BS-806469	Pin, Locating	2
17	BS-692540	Screw (Crankcase Cover)	11	61	BS-690679	Screw	2
18	BS-808527	Piston Assembly	2	62	BS-691530	Gear, Timing	1
	BS-808652	Piston Assembly, .020 O.S.	2	63	BS-690706	Washer	1
19	BS-808528	Ring Set	2	64	BS-809157	Stud, Rocker Arm	4
	BS-808661	Ring Set, .020 O.S.	2	65	BS-691963	Seal, Valve	2
20	BS-806378	Lock, Piston Pin	2	66	BS-692057	Bushing, Valve Guide	4
21	BS-808526	Pin, Piston	2	67	BS-692063	Gasket, Oil Adapter	1
22	BS-808646	Rod, Connecting	2	68	BS-690900	Screen, Oil Pump	1
23	BS-690698	Screw, Connecting Rod	4	69	BS-806039	Gasket, Rocker Cover	2
24	BS-806419	Valve, Exhaust	2	70	BS-690910	Cover, Rocker Arm	1
25	BS-806420	Valve, Intake	2	71	BS-693185	Pump, Oil	1
26	BS-692084	Spring, Valve (Intake)	2	72	BS-690689	Spool, Governor	1
27	BS-692084	Spring, Valve (Exhaust)	2	73	BS-691836	Rod, Push (Steel)	4
28	BS-690745	Deflector	1		BS-691758	Rod, Push (Aluminum)	4
29	BS-692058	Retainer, Valve	4	74	BS-492932	Filter, Oil	1
30	BS-807683	Keeper, Valve	4	75	BS-808235	Adapter, Oil Filter	1
31	BS-690977	Tappet, Valve	4	76	BS-807323	Arm, Rocker	4
32	BS-690927	Camshaft	1	77	BS-690973	Pivot, Rocker Arm	4
33	BS-690283	Plug, Oil	1	78	BS-807084	Screw, Rocker Cover	4
34	BS-691639	Key, Timing	1	79	759-3336	Spark Plug	2
35	BS-807623	Adjuster, Rocker Arm	4	80	751-3140	Drain, Oil	1
36	BS-690323	Switch, Oil Pressure	1	81	751-3142	Cap	1
37	BS-690681	Seal, Oil Ring (Oil Pump)	1	82	751-3141-12	Hose, Oil Drain	1
38	BS-690704	Washer, Sealing	1	83	BS-692062	Screw, Dipstick Tube	1
39	BS-807085	Washer, Sealing	1	84	BS-806667	Connector, Filter Adapter	1
40	BS-691312	Gasket, Oil Fill	1				
41	BS-808095	Key, Woodruff	1	-	BS-380447-0079	Engine, Complete Replacement	1
42	BS-692154	Seal, O-Ring	1	-	BS-695390	Short Block	1

CARBURETOR



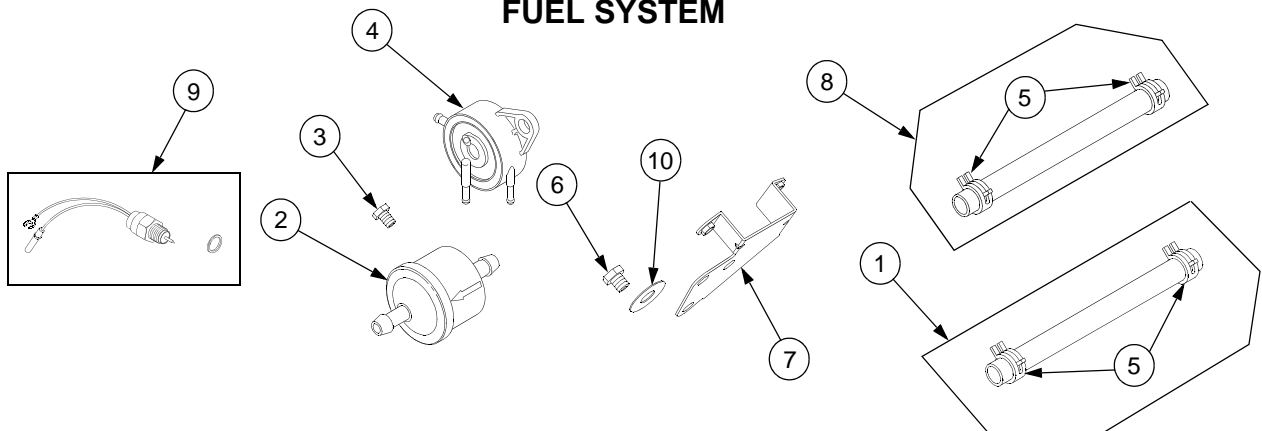
REF. NO.	PART NUMBER	DESCRIPTION	QTY.	REF. NO.	PART NUMBER	DESCRIPTION	QTY.
1	BS-690950	Gasket, Intake	1	18	BS-690722	Seal, Choke/Throttle Shaft	2
2	BS-808257	Kit, Idle Mixture	1	19	BS-807723	Plug, Carburetor	1
3	BS-690718	Screw, Throttle Valve	2	20	BS-808627	Bowl, Float	1
4	BS-808713	Shaft, Throttle	1	21	BS-808183	Seal, Throttle Shaft	1
5	BS-693711	Gasket, Carburetor Body	1	22	BS-691516	Cap, Limiter	1
6	BS-690882	Pin, Float Hinge	1	23	BS-692062	Screw	4
7	BS-808798	Valve, Float Needle	1	24	BS-692070	Spring, Governor	1
8	BS-690883	Valve, Choke	1	25	BS-692069	Spring, Governed Idle	1
9	BS-808277	Shaft, Choke	1	26	BS-691536	Link, Throttle	1
10	BS-806438	Jet, Main (Standard) - Cylinder #1	1	27	BS-808454	Bracket, Control	1
11	BS-806439	Jet, Main (Standard) - Cylinder #2	1	28	BS-690236	Lever, Governor Control	1
12	BS-690884	Valve, Throttle	2	29	BS-691538	Spring, Governor Link	1
13	BS-808180	Float, Carburetor	1	30	BS-691024	Clamp, Casing	1
14	BS-808712	Carburetor	1	31	BS-692083	Screw	1
15	BS-806375	Nozzle, Carburetor	1	32	BS-690238	Nut, Governor Control Lever	1
16	BS-692056	Screw	2	33	BS-690239	Bolt, Governor Control Lever	1
17	BS-690724	Washer, Sealing	1	34	BS-691542	Link, Choke	1

AIR CLEANER



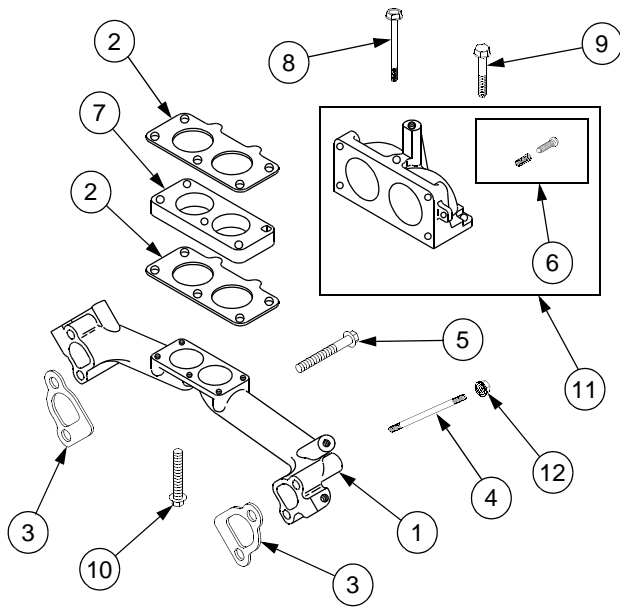
REF. NO.	PART NUMBER	DESCRIPTION	QTY.
1	BS-808655	Base, Air Cleaner	1
2	BS-692087	Gasket, Air Cleaner	1
3	BS-692519	Filter, Air Cleaner Cartridge	1
4	BS-691985	Knob, Air Cleaner	1
5	BS-692079	Retainer, Air Filter	1
6	BS-809157	Screw, Cleaner Mounting Strap	1
7	BS-807084	Screw, Cleaner Mounting Strap	1
8	BS-691539	Strap, Air Cleaner Mounting	1
9	BS-690917	Shield, Carburetor	1
10	BS-692520	Pre Cleaner, Filter	1
11	BS-808654	Cover, Air Cleaner	1
12	BS-691492	Screw, Air Cleaner Base	1
13	BS-692539	Screw, Air Cleaner Base	1
14	BS-806422	Duct, Air	1
15	BS-691534	Elbow, Intake	1

FUEL SYSTEM



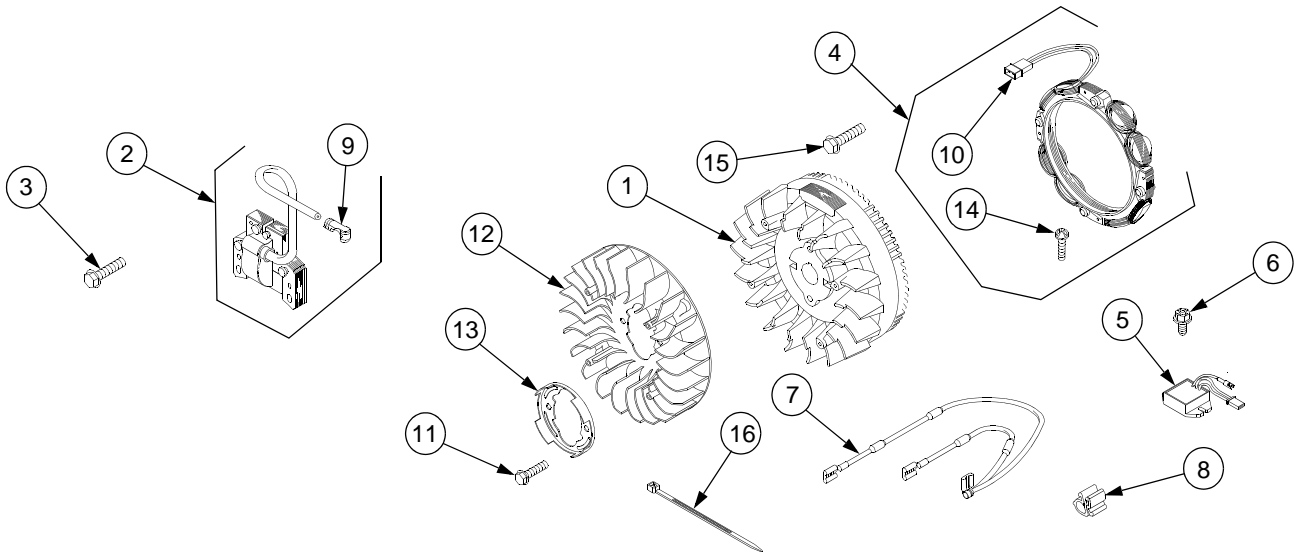
REF. NO.	PART NUMBER	DESCRIPTION	QTY.
1	BS-691050	Line, Fuel	1
2	BS-691035	Filter, Fuel	1
3	BS-807084	Screw, Fuel Pump	2
4	BS-808656	Pump, Fuel	1
5	BS-691038	Clamp, Hose	4
6	BS-806660	Screw, Fuel Pump Bracket	2
7	BS-691559	Bracket, Fuel Pump	1
8	BS-393815	Hose, Vacuum	1
9	BS-808624	Solenoid, Fuel	1
10	BS-806497	Washer	1

INTAKE MANIFOLD



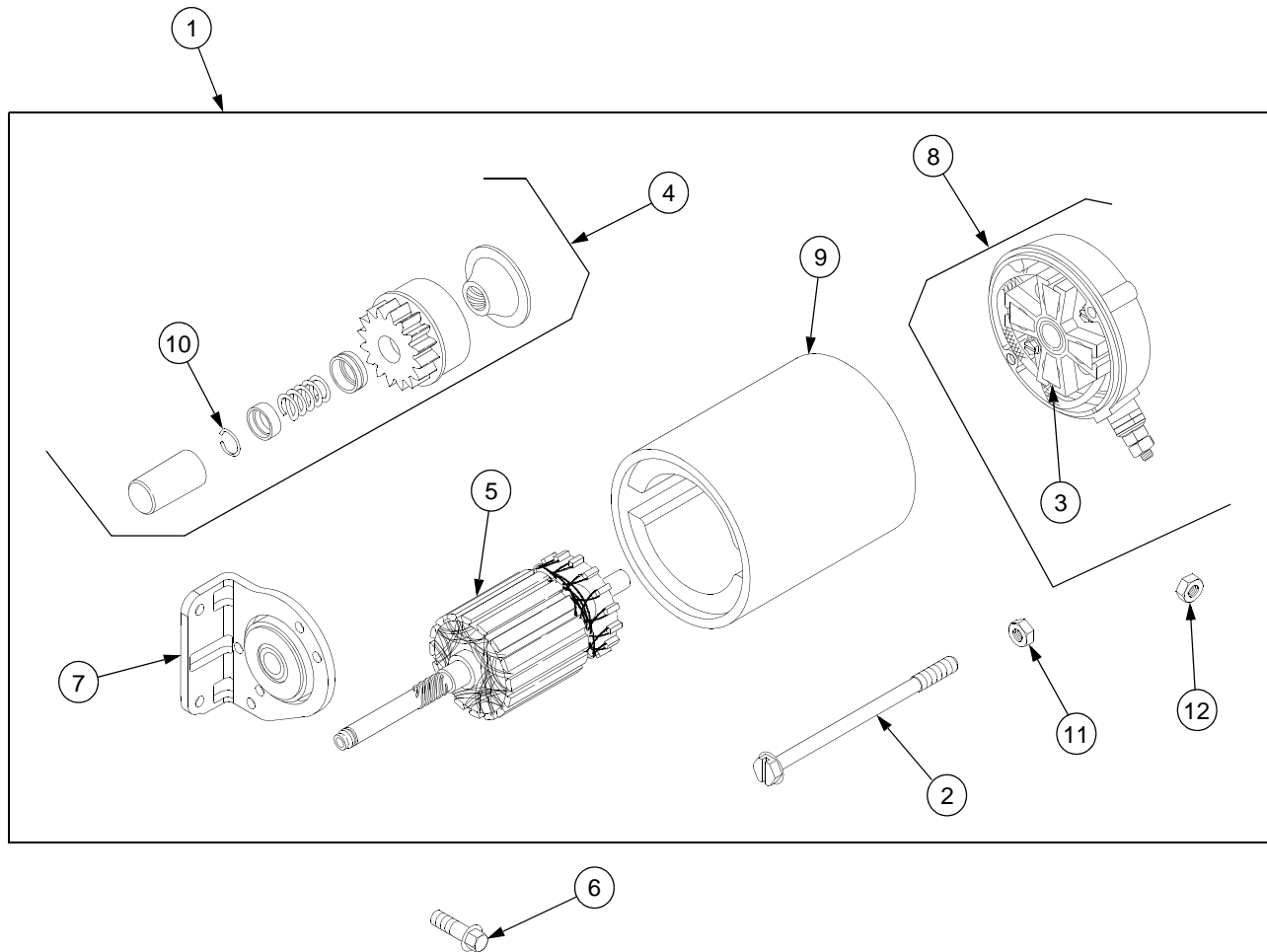
REF. NO.	PART NUMBER	DESCRIPTION	QTY.
1	BS-806376	Manifold, Intake	1
2	BS-690950	Gasket, Intake Manifold	2
3	BS-806418	Gasket, Intake Manifold	2
4	BS-690746	Stud, Carburetor	1
5	BS-690676	Screw, Intake Manifold	4
6	BS-808177	Kit, Idle Speed	1
7	BS-690870	Spacer, Carburetor	1
8	BS-691537	Screw, Intake Elbow	1
9	BS-691492	Screw, Intake Elbow	1
10	BS-690866	Screw, Carburetor	2
11	BS-808659	Elbow, Intake	1
12	BS-690939	Nut, Carburetor	2

ENGINE ELECTRICAL



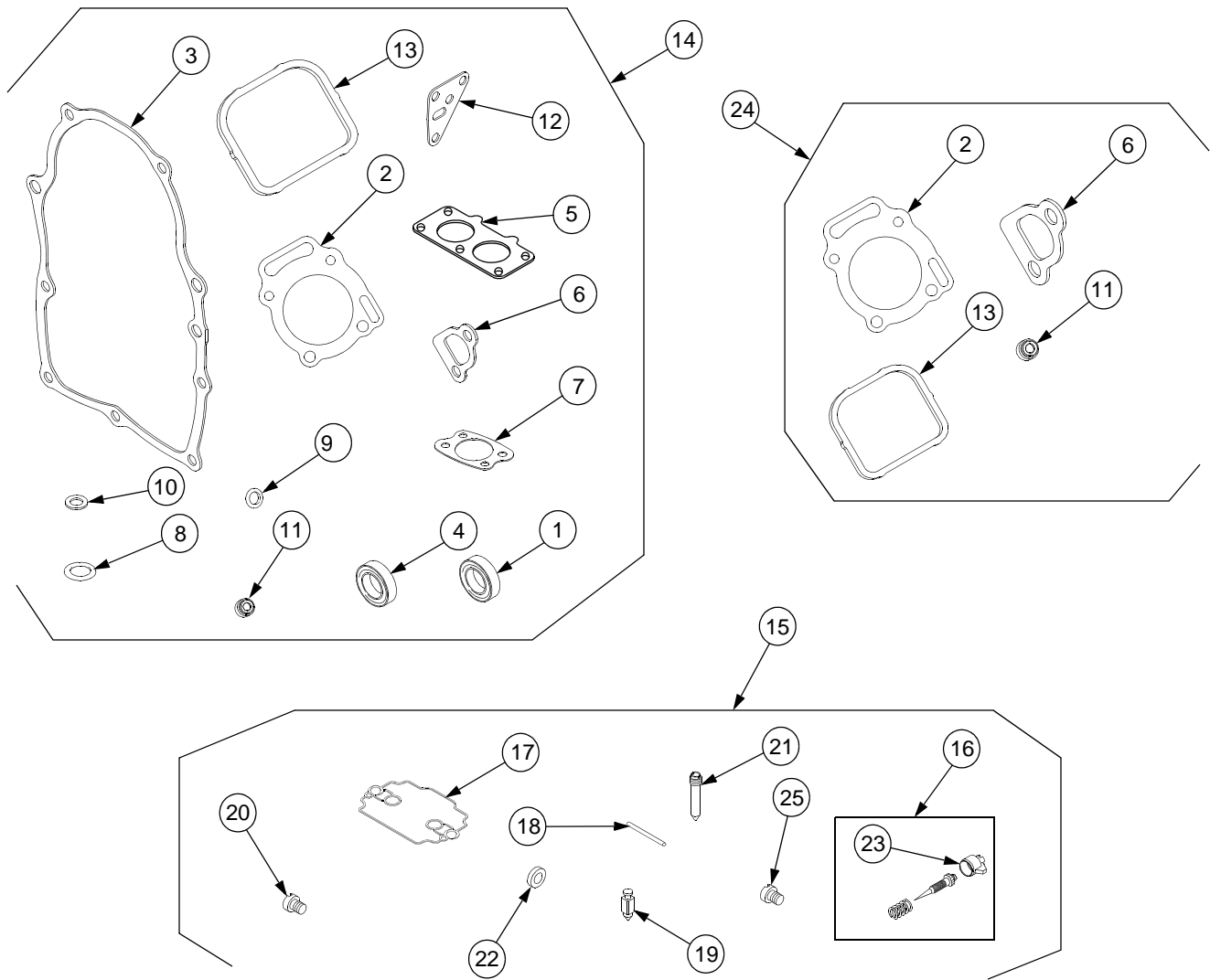
REF. NO.	PART NUMBER	DESCRIPTION	QTY.	REF. NO.	PART NUMBER	DESCRIPTION	QTY.
1	BS-808768	Flywheel & Ring Gear	1	9	BS-493880	Terminal, Spark Plug	2
	BS-690887	Nut, Flywheel	1	10	BS-399916	Wire/Connector, Alternator	1
2	BS-492341	Armature, Magneto	1	11	BS-691058	Screw, Fan Retainer	2
3	BS-692066	Screw, Magneto Armature	2	12	BS-690911	Fan, Flywheel	1
4	BS-696458	Alternator	1	13	BS-690452	Retainer, Fan	1
5	BS-691185	Regulator	1	14	BS-698516	Kit, Screw/Washer	1
6	BS-692067	Screw, Regulator	2	15	BS-691552	Screw, Alternator	2
7	BS-692319	Wire Assembly	1	16	BS-280275	Tie, Cable	1
8	BS-690586	Clip, Wire	1				

ELECTRIC STARTING MOTOR



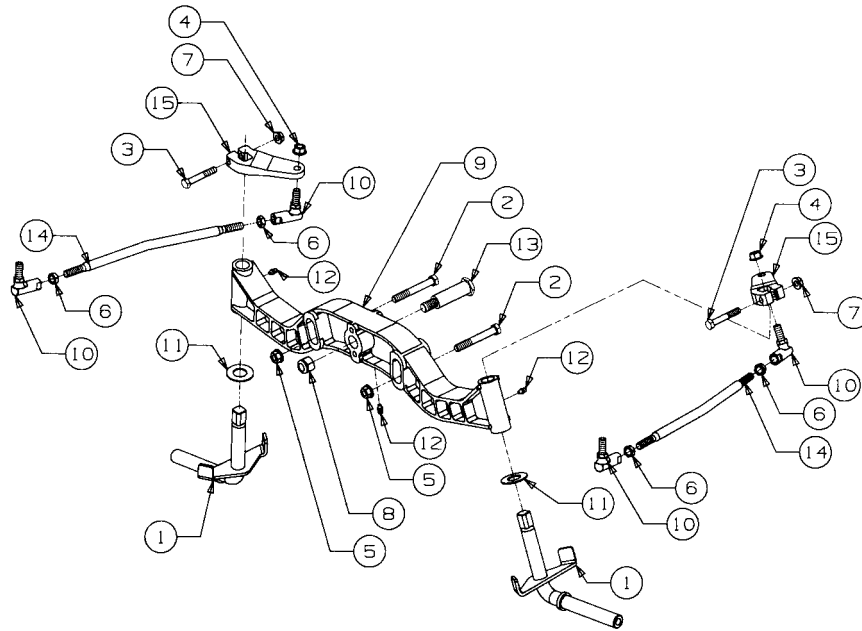
REF. NO.	PART NUMBER	DESCRIPTION	QTY.
1	BS-691564	Starter Motor Assembly	1
2	BS-690323	Bolt, Starter Motor	2
3	BS-496887	Brush Set	1
	BS-691293	Retainer	1
4	BS-496881	Drive, Starter	1
5	BS-693548	Armature Assembly	1
6	BS-692062	Screw, Drive Cap	2
7	BS-808777	Cap, Drive	1
8	BS-691286	Cap, End	1
9	BS-693547	Housing, Starter	1
10	BS-691124	Ring, Retaining	1
11	BS-693587	Nut, Starter Motor	2
12	BS-691029	Nut, Brush Retainer	1

GASKET SETS AND CARBURETOR OVERHAUL KIT



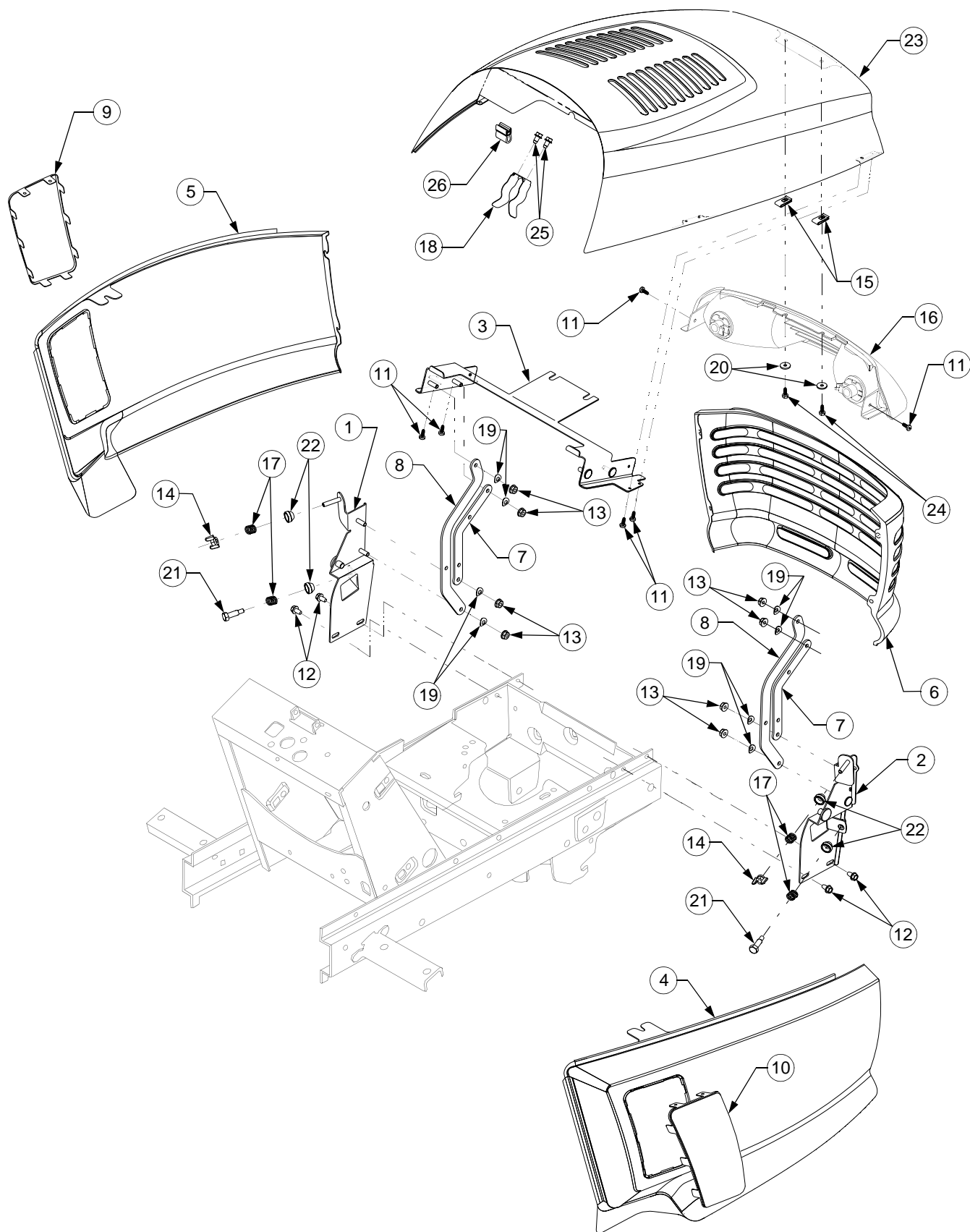
REF. NO.	PART NUMBER	DESCRIPTION	QTY.	REF. NO.	PART NUMBER	DESCRIPTION	QTY.
1	BS-805101	Seal, Oil (Magnetos Side)	1	14	BS-808617	Gasket Set, Engine	1
2	BS-806377	Gasket, Cylinder Head	2	15	BS-808816	Kit, Carburetor Overhaul	1
3	BS-691684	Gasket, Crankcase	1	16	BS-808257	Kit, Idle Mixture	1
4	BS-805049	Seal, Oil (PTO Side)	1	17	BS-693711	Gasket, Carburetor Body	1
5	BS-690950	Gasket, Intake	1	18	BS-690882	Pin, Float Hinge	1
6	BS-806418	Gasket, Intake	2	19	BS-808798	Valve, Float Needle	1
7	BS-692087	Gasket, Air Cleaner	1	20	BS-806438	Jet, Main (Standard) Cylinder #1	1
8	BS-690681	Seal, O-Ring (Oil Pump)	1	21	BS-806375	Nozzle, Carburetor	2
9	BS-692154	Seal, O-Ring (Crankcase Cover)	1	22	BS-690722	Seal, Choke/Throttle Shaft	1
10	BS-690690	Seal, O-Ring (Oil Pump Screen)	1	23	BS-691516	Cap, Limiter	1
11	BS-691963	Seal, Valve	2	24	BS-808619	Gasket Set, Valve	1
12	BS-692063	Gasket, Oil Adapter	1	25	BS-806439	Jet, Main (Standard) Cylinder #2	1
13	BS-806039	Gasket, Rocker Cover	2				

FRONT AXLE AND CONNECTIONS



REF. NO.	PART NUMBER	DESCRIPTION	QTY.
1	603-0066	Knuckle Assembly, Steering	2
2	710-3066	Screw, Hex Cap, 3/8-16 x 2.75 GR8	2
3	710-3103	Screw, Hex Cap, 5/16-18 x 2 GR5	2
4	712-3054	Nut, Hex Lock, 3/8-24 GR5	2
5	712-0431	Nut, Hex Flanged Lock, 3/8-16	2
6	712-0711	Nut, Hex Jam, 3/8-24 GR2	4
7	712-3004A	Nut, Hex Flange Top Lock, 5/16-18	2
8	712-3083	Nut, Hex Top Nylon Lock, 1/2-13	1
9	719-3095	Axle, Front Pivot	1
10	723-0156	Joint, Ball, 3/8-24	4
11	736-0188	Washer, Flat, .760 x 1.49 x .06 Thk.	2
12	737-3000	Fitting, Lube, 3/16 Drive Type	3
13	738-3110	Bolt, Pivot Shoulder, 3/4 Dia x 2.23	1
14	747-3171	Rod, Tie	2
15	748-3049	Arm, Steering	2

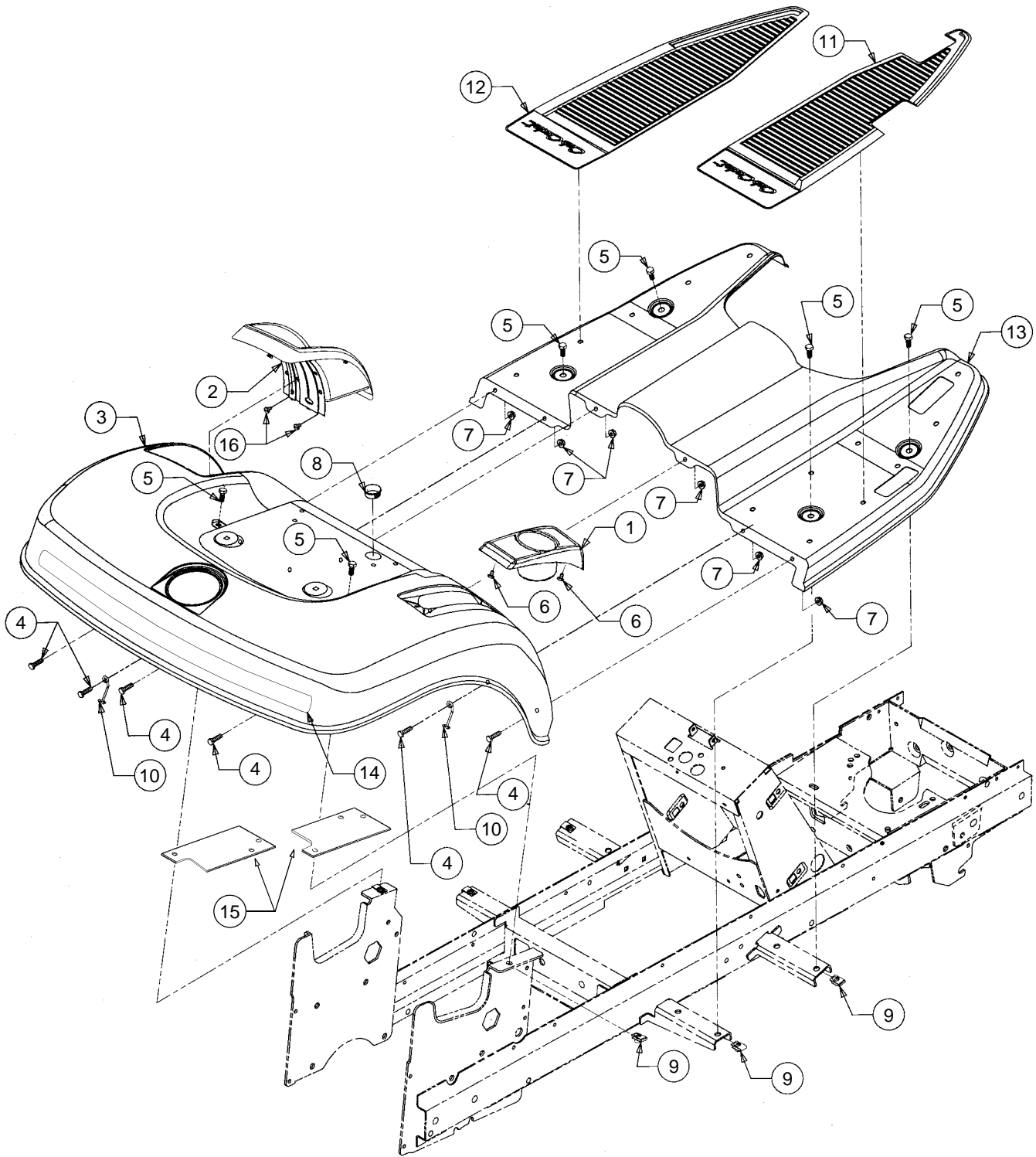
GRILLE, HOOD AND SIDE PANELS



GRILLE, HOOD AND SIDE PANELS

REF. NO.	PART NUMBER	DESCRIPTION	QTY.
1	603-0211	Bracket, Grille LH	1
2	603-0212	Bracket, Grille RH	1
3	603-04191	Bracket, Upper Hood	1
4	703-2396	Panel, RH Side	1
	777D08231	Graphic, GT 2521	1
	777X40079	Strip, Protective	1
5	703-2397	Panel, LH Side	1
	777D08231	Graphic, GT 2521	1
	777X40079	Strip, Protective	1
6	703-2398	Grille	1
	777I20314	Graphic, Warning HOT	1
7	703-2465	Link, Short Hood	2
8	703-2466A	Link, Long Hood	2
9	703-2495	Screen, LH Panel	1
10	703-2496	Screen, RH Panel	1
11	710-0351	Screw, Truss Mach Tapp, #10 x .50	6
12	710-0599	Screw, Hex Wash Hd Tapp, 1/4 x .50	4
13	712-3027	Nut, Hex Flange Lock, 1/4-20	8
14	712-0397	Nut, Wing, 1/4-20	2
15	726-0139	Nut, U-Type Speed, #10	2
16	625-04001A	Headlight Assy (Includes Lamp and Socket)	1
	725-0963	Lamp, 12V	2
	725-1649	Socket, Lamp	2
	777X41348	Reflector, Headlight	1
17	732-0334	Spring, Compression, .50 OD x .50	4
18	732-1178	Spring, Hood Latch	1
19	736-0175	Washer, Spring, .265 x .562 x .025	8
20	736-0400	Washer, Flat, .218 x .62 x .063	2
21	738-3141	Bolt, Shoulder, .31 Dia x .75 Lg	2
22	748-3055	Bushing, Tapered	4
23	959-3747B	Hood, Series 2000	1
	777D08229	Graphic, Hood - RH	1
	777D08230	Graphic, Hood - LH	1
24	710-0436	Screw, Hex Tapp, 10-16 x .625	2
25	710-1005	Screw, Hex Wash Hd Tapp, 1/4-14 x .5	2
26	723-3061-19	Seal, Heat Baffle	19in

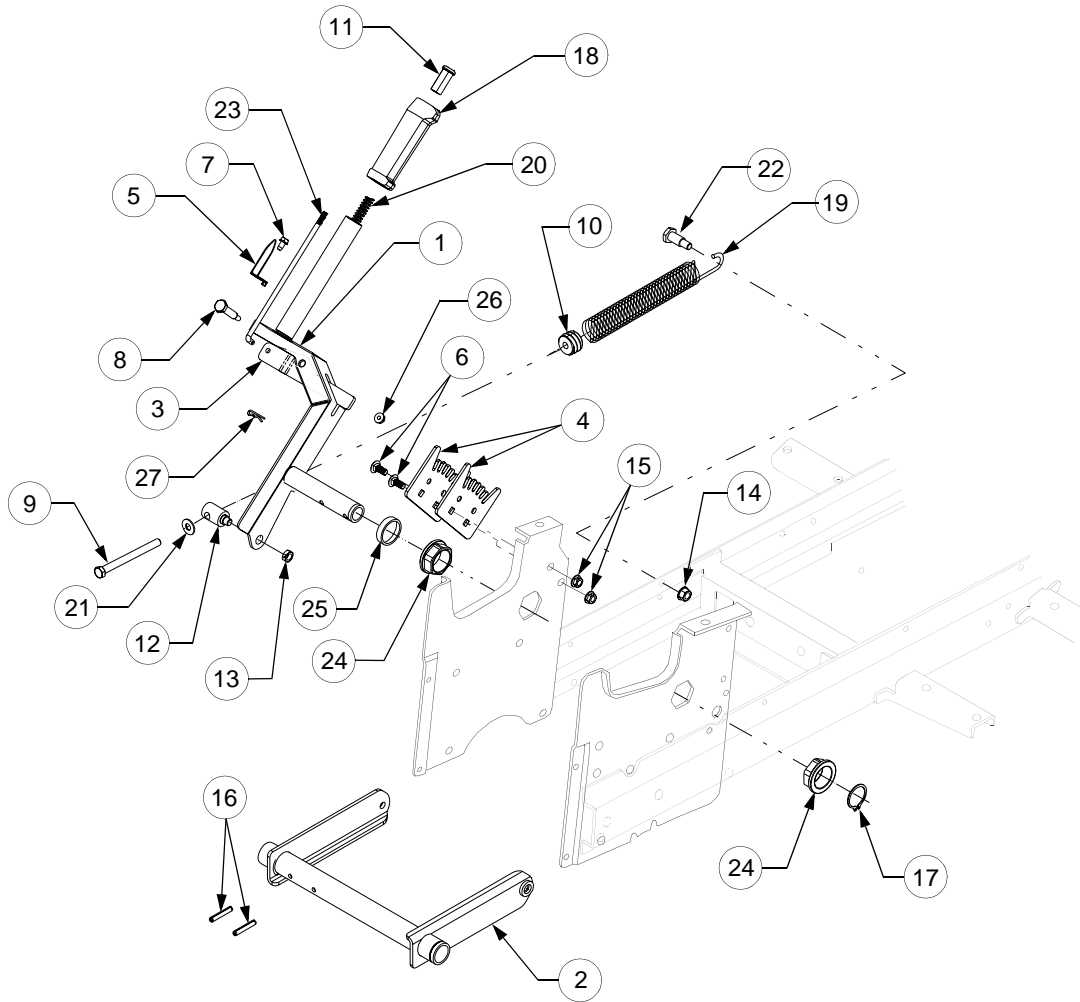
FENDER AND RUNNING BOARD



FENDER AND RUNNING BOARD

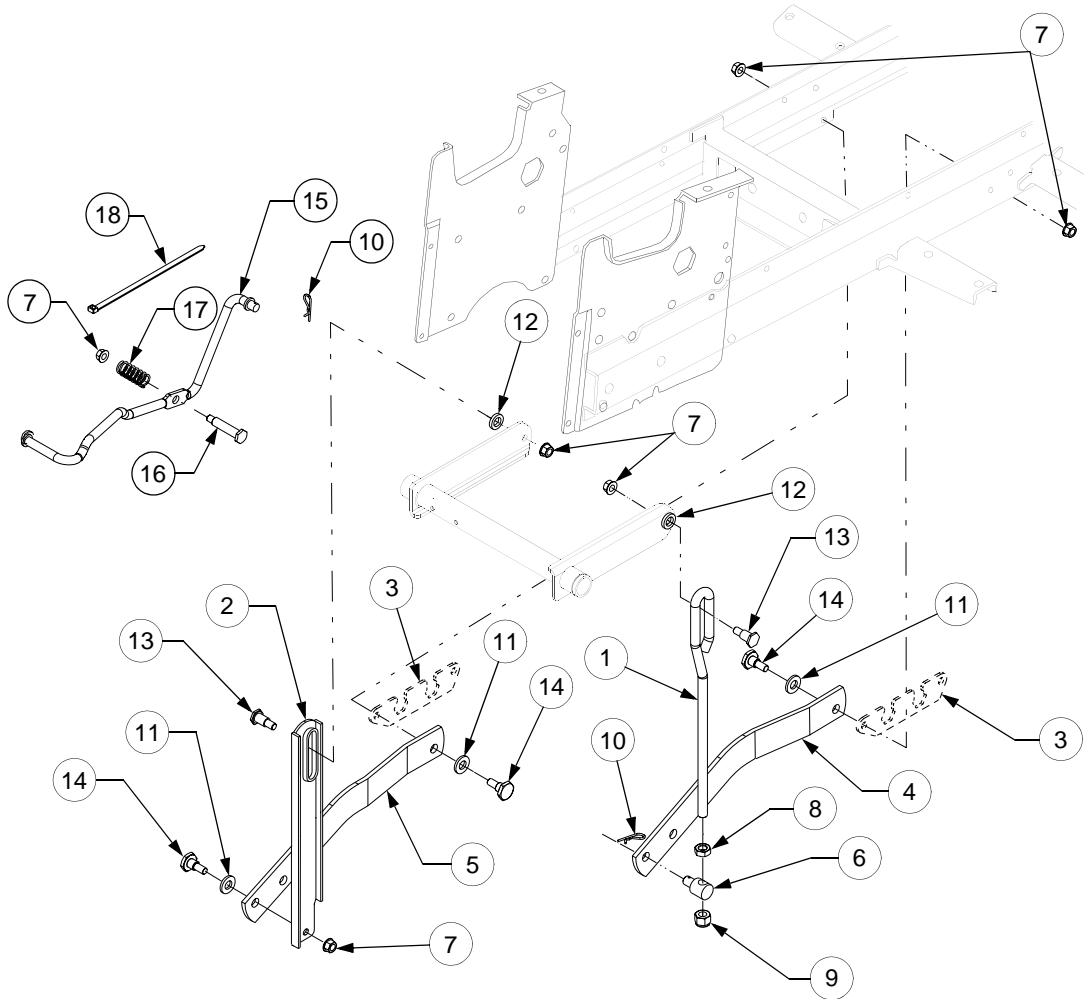
REF. NO.	PART NUMBER	DESCRIPTION	QTY.
1	731-3212A	Cup Holder	1
2	631-3002	Cover, Implement Lift	1
3	703-2278B	Fender	1
4	710-0751	Screw, Hex Cap, 1/4-20 x .62 GR5	6
5	710-1260A	Screw, Hex Wash Hd Tapp 5/16-18 x .750	6
6	710-1268	Screw, Hex Tapp, #10 x .38 Lg	2
7	712-3027	Nut, Hex Flange Lock, 1/4-20	6
8	723-3042	Bushing, Snap, 7/8 ID	1
9	726-0211	U-Nut, 5/16-18	6
10	732-3122	Retainer, Hook	2
11	735-3046A	Pad, RH Foot	1
12	735-3047	Pad, LH Foot	1
13	703-2279	Running Board w/Graphic	1
	777S30170	Graphic, Warning	1
14	777D08225	Graphic, Rear Fender	1
15	703-2628	Bracket, Fender Reinforcement	2
16	710-0224	Screw, Hex Tapp, #10-16 x .5 Lg.	4

IMPLEMENT LIFT HANDLE



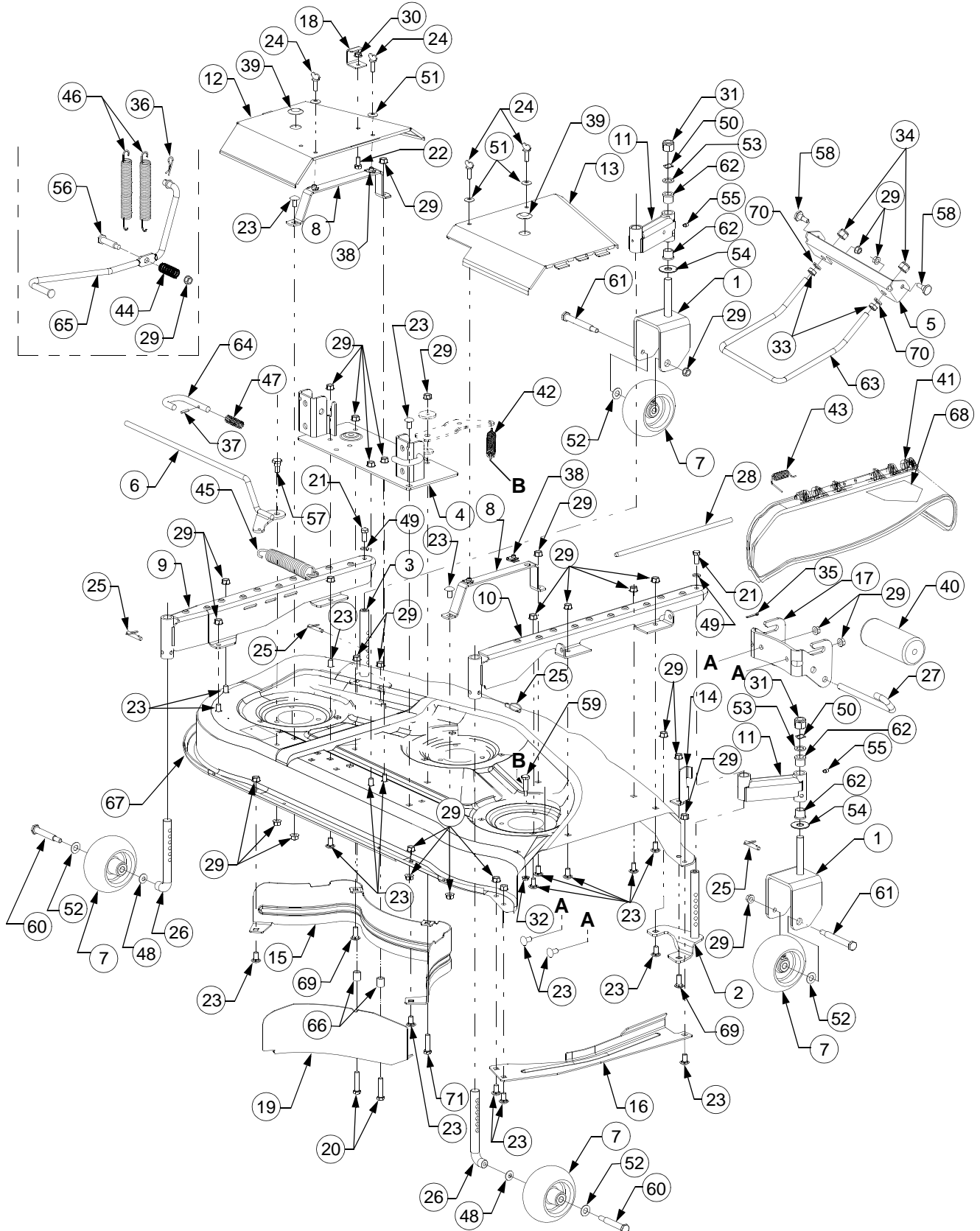
REF. NO.	PART NUMBER	DESCRIPTION	QTY.	REF. NO.	PART NUMBER	DESCRIPTION	QTY.
1	603-04141	Handle Assembly, Lift	1	14	712-0431	Nut, Hex Flanged Lock, 3/8-16	1
2	603-0059A	Shaft Assembly, Lift	1	15	712-3004A	Nut, Hex Flanged Top Lock, 5/16-18	2
3	603-05247	Fork, Lift	1	16	715-0114	Pin, Spiral Spring, 1/4 Dia x 1.5	2
4	703-2239A	Bracket, Lift Index	2	17	716-0116	Ring, Snap, 1.25 Dia Shaft	1
5	703-2558	Indicator, Lift Height	1	18	731-3158	Grip, Lift Handle	1
6	710-0451	Bolt, Carriage, 5/16-18 x .75	2	19	732-3093	Spring, Extension	1
7	710-0599	Screw, Hex Wash Tapp, 1/4 x .5	1	20	732-3097	Spring, Compression	1
8	738-0560	Screw, Shoulder, .374 x 1.375	1	21	736-0267	Washer, Flat, .385 x .87 x .06	1
9	710-3279	Screw, Hex Cap, 3/8-16 x 4.25 GR5	1	22	738-0145	Bolt, Shoulder	1
10	711-0635	Insert, Spring	1	23	747-3175A	Rod, Index	1
11	711-0642A	Button, Handle	1	24	748-3051	Bearing, Hex Flange, 1.25 ID	2
12	711-3350	Ferrule, Adjustment	1	25	750-3131	Spacer, 1.28 ID x 1.5 OD x .335 Lg	1
13	712-0262	Nut, Hex Center Lock, Jam, 3/8-24	1	26	712-3027	Nut, Hex Flange Lock, 1/4-20	1
				27	714-0104	Pin, Internal Cotter	1

IMPLEMENT LIFT HANGER



REF. NO.	PART NUMBER	DESCRIPTION	QTY.
1	747-04196	Rod, Lift Link	1
2	703-2234	Bracket, LH Hanger	1
3	703-2804	Plate, Bearing Mounting	2
4	703-2832	Link, RH Lift	1
5	703-2833	Link, LH Lift	1
6	711-3319	Ferrule, Adjustment	1
7	712-0431	Nut, Hex Flange Lock, 3/8-16	6
8	712-3048	Nut, Hex Jam, 1/2-13 GR5	1
9	712-3083	Nut, Hex Insert Lock, 1/2-13	1
10	714-0145	Pin, Internal Cotter	2
11	736-0326	Washer, Flat, .5 x 1.5 x .15	3
12	736-3069	Washer, Flat, .531 x .875 x .15	2
13	738-0430	Bolt, Shoulder	2
14	738-0507B	Bolt, Shoulder	3
15	747-3236A	Rod, Lift Assist	1
16	738-0129	Bolt, Shoulder, 3/8-16: .5 x 2.0	1
17	732-3094	Spring, Compression, .63 ID x 2.0	1
18	726-0209	Tie, Cable	1

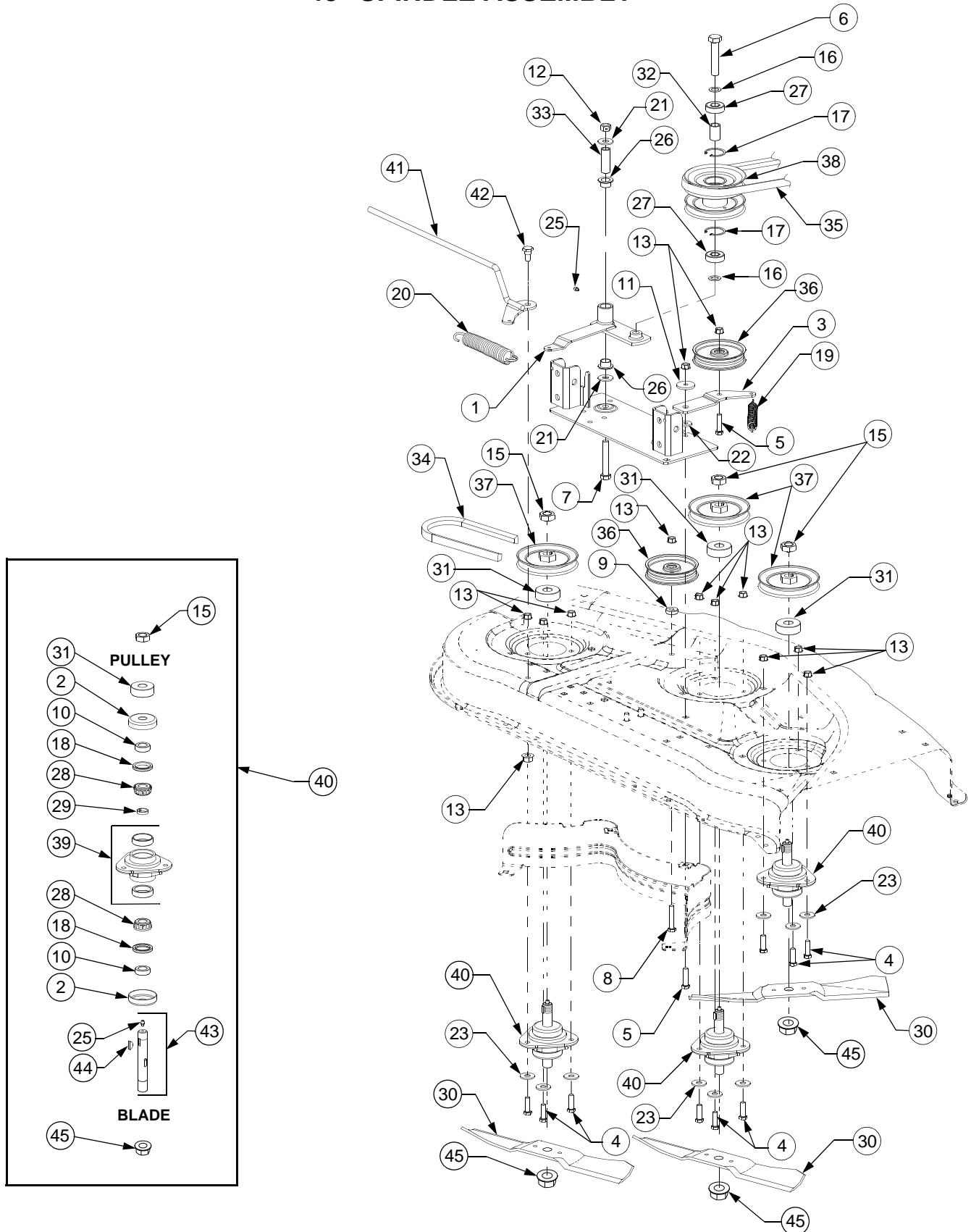
48" DECK ASSEMBLY



48" DECK ASSEMBLY

REF. NO.	PART NUMBER	DESCRIPTION	QTY.	REF. NO.	PART NUMBER	DESCRIPTION	QTY.
1	603-0031A	Bracket, Caster Wheel	2	38	726-0211	U-Nut, 5/16-18	4
2	603-0110	Spindle Assy, RH Front	1	39	726-3045	Plug, Button	2
3	603-0111	Spindle Assy, LH Front	1	40	731-3005	Roller	1
4	903-0183A	Plate Assy, Mounting	1	41	731-3131A	Deflector, Chute	1
5	703-2248	Bracket, Front Lift	1	42	732-0478	Spring, Extension, .75 OD x 6.12	1
6	603-0203	Handle, Tension	1	43	732-3070	Spring, Torsion	1
7	703-1890	Wheel, Ball w/Fitting, 5 in	4	44	732-3094	Spring, Compression, .63 ID x 2	1
	737-3000	Fitting, Lube, 3/16 Drive	4	45	732-0861	Spring, Extension, 1.25 OD x 7.2	1
8	703-2072	Strap, Mounting	2	46	732-3126	Spring, Extension, .91 OD x 7.33	2
9	703-2081A	Channel, LH Caster	1	47	732-3127	Spring, Compression	2
10	703-2083	Channel, RH Caster	1	48	736-0105	Washer, Bell, .380 x .88 x .062	2
11	703-2094	Caster Assembly, Front	2	49	736-0169	Washer, Lock, 3/8	2
12	703-2096B	Guard, LH Belt	1	50	736-0174	Washer, Wave, .625 x .885 x .015	2
13	703-3240	Guard, RH Belt	1	51	736-0242	Washer, Bell, .340 x .872 x .060	4
14	703-2121A	Stop, Chute Deflector	1	52	736-0272	Washer, Flat, .510 x 1 x .060	4
15	703-2161	Baffle, Rear Inner	1	53	736-0290	Washer, Flat, .63 x 1 x .063	2
16	703-2192	Guard, Finger	1	54	736-3088	Washer, Flat, .635 x 1.585 x .062	2
17	703-2479	Bracket, Front Roller	1	55	737-3000	Fitting, Lube, 3/16 Drive	2
18	703-2559	Bracket, Handle Stop	1	56	738-0129	Bolt, Shoulder	1
19	703-2607	Baffle	1	57	738-0143	Bolt, Shoulder, .498 Dia x .340	1
20	710-0347	Screw, Cap, 3/8-16 x 1.75 GR5	2	58	738-0507B	Bolt, Shoulder, .500 Dia x .434	2
21	710-3001	Screw, Cap, 3/8-16 x .88 GR5	2	59	738-0572	Bolt, Shoulder, .374 Dia x 1.16	1
22	710-3008	Screw, Cap, 5/16-18x .75 GR5	1	60	738-3056	Bolt, Shoulder	2
23	710-3178	Bolt, Carriage, 3/8-16 x .75 GR5	24	61	738-3093	Bolt, Step Shoulder	2
24	710-3232	Screw, Thumb Adj, 5/16-18 x 1	4	62	741-0353	Bearing, Flange	4
25	711-3266	Pin, Clevis w/Ball Detent	4	63	747-3172B	Rod, Front Lift	1
26	711-3312	Axle, Deck Caster	2	64	747-3188	Pin, Mower Support	2
27	711-3314	Pin, Roller, 1/2 Dia x 7.31	1	65	747-3237A	Rod, LH Lift Assist	1
28	711-1762	Pin, Hinge, .375 Dia x 14.06	1	66	750-0639	Spacer, .437 ID x .625 OD x .75	2
29	712-0431	Nut, Hex Flanged Lock, 3/8-16	32	67	759-3733	Deck Assembly w/Graphics	1
30	712-3004A	Nut, Hex Flanged Lock, 5/16-18	1		777S30014	Graphic, Caution Spring Tension	1
31	712-3016	Nut, Hex Top Lock, 5/8-11 GR5	2		777S30015	Graphic, Rider Danger	1
32	712-3027	Nut, Hex Flange Lock, 1/4-20	1		777S30503	Graphic, Danger	1
33	712-3048	Nut, Hex Jam, 1/2-13 GR5	2	68	777S30145	Graphic, Danger	1
34	712-3083	Nut, Hex Top Nylon Lock, 1/2-13	2	69	710-3168	Bolt, Carriage, 3/8-16 x 1.0 GR5	2
35	714-0115	Pin, Cotter, 1/8 Dia x 1	1	70	736-0921	Washer, Lock, 1/2	2
36	714-0145	Pin, Int. Cotter, .092 Dia. x 1.63	1	71	710-0520	Screw, Cap, 3/8-16 x 1.5 GR5	1
37	715-3003	Pin, Spirol, 3/16 x .75	2				

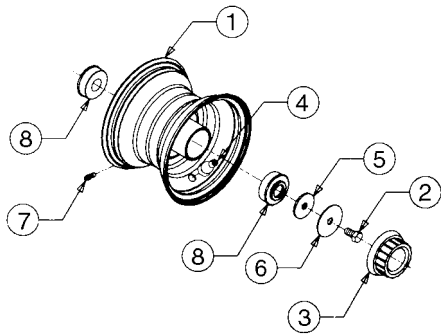
48" SPINDLE ASSEMBLY



48" SPINDLE ASSEMBLY

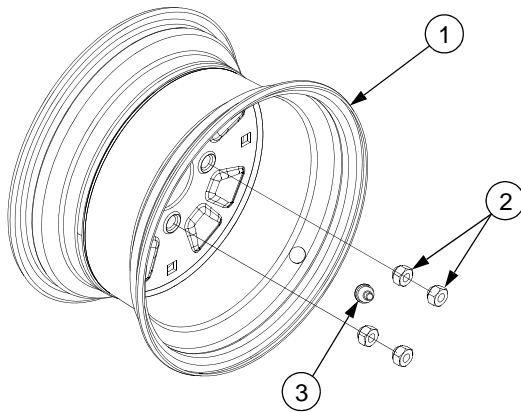
REF. NO.	PART NUMBER	DESCRIPTION	QTY.
1	603-0857	Pivot Arm, Double Pulley	1
2	703-1387	Cup, Spindle	6
3	703-2579	Arm, Idler	1
4	710-3005	Screw, Hex Cap 3/8-16 x 1.25 GR5	9
5	710-0520	Screw, Hex Cap, 3/8-16 x 1.5 GR5	2
6	710-0923	Screw, Hex Cap, 5/8-18 x 3 GR5	1
7	710-1010	Screw, Hex Cap, 1/2-20 x 3 GR8	1
8	710-3144	Screw, Hex Cap, 3/8-16 x 2	1
9	711-0242	Spacer, .380 ID x 1 OD x .32	1
10	711-3171A	Spacer, .755 ID x 1.25 OD x .44	6
11	711-3272A	Spacer, Shoulder	1
12	712-0239	Nut, Hex Center Lock, 1/2-20	1
13	712-0431	Nut, Hex Flanged Lock, 3/8-16	13
15	712-3026	Nut, Hex Jam, 3/4-16 GR5	3
16	736-0237	Washer, Flat, .65 x 1.25 x .075	2
17	716-3020	Snap Ring, Internal	2
18	721-3018A	Seal, Oil, 1.25 x 1.874 x .25	6
19	732-0478	Spring, Extension, .75 OD x 6.12	1
20	732-0861	Spring, Extension, 1.25 OD x 8.15	1
21	736-0179	Washer, Flat, .531 x 1.25 x .1 Thk	2
22	736-0258	Washer, Flat, .385 x 1 x .127 Thk	1
23	736-3052	Washer, Flat, .406 x 1.0 x .105	9
25	737-3000	Fitting, 3/16 Drive Lube	4
26	741-0338	Bearing, Flange, 3/4 ID x .53	2
27	741-1122	Bearing, Ball, .62 x 1.57 x .470	2
28	741-3028	Cone, Bearing	6
29	741-3030	Spacer, Bearing	3
30	742-3019	Blade, Low Lift, 16.5"	3
	742-3025	Blade, High Lift, 16.5"	3
	759-3677	Blade, Hard Coated, 16.5"	3
31	748-3020	Spacer	3
32	750-3132	Spacer, Pulley, .635 ID x .88 OD x	1
33	750-3136	Spacer, Idlr Brkt, .51 ID x .75 OD x	1
34	754-3041	Belt, Spindle, A-Section x 105"	1
35	754-04041	Belt, PTO, B-Section x 111.2"	1
36	756-3005	Pulley, Flat Idler, 4.06 OD	2
37	756-3046	V-Pulley, 4.70 OD	3
38	756-3116	Pulley, Double	1
	737-3000	Fitting, 3/16 Drive	1
39	759-3226	Housing w/Cups, Spindle	3
40	759-3665	Spindle Ass'y, Blade	3
41	603-0203	Handle, Tension	1
42	738-0143	Bolt, Shoulder, .498 Dia. x .340	1
43	759-3369	Kit, Shaft w/Seal	3
44	714-0135	Key, #91 Woodruff, 1/4 x 3/4	3
45	712-3078	Nut, Hex Flange, 3/4-16 (Optional)	3

FRONT WHEEL



REF. NO.	PART NUMBER	DESCRIPTION	QTY.
	734-3187	Tire, Cub Tread, 16 x 6.5 x 8	2
1	634-3016	Rim Assy, Front	2
2	710-3119	Bolt, Hex Patch, 3/8-16 x .75 GR5	2
3	731-3020	Cap, Hub	2
4	734-0255	Valve, Tubeless Air	2
5	736-3039	Washer, Flat, .406 x 1.5 x .110	2
6	736-3040	Washer, Flat, .406 x 1.92 x .06	2
7	737-0224	Fitting, Grease	2
8	741-3032	Bearing, Ball	4

REAR WHEEL



REF. NO.	PART NUMBER	DESCRIPTION	QTY.
	734-3190	Tire, Cub Tread, 23 x 9.5 x 12	2
1	634-3189	Rim Assy, Rear	2
2	712-3050	Nut, Lug, 7/16-14	8
3	734-0255	Valve, Tubeless Air	2