

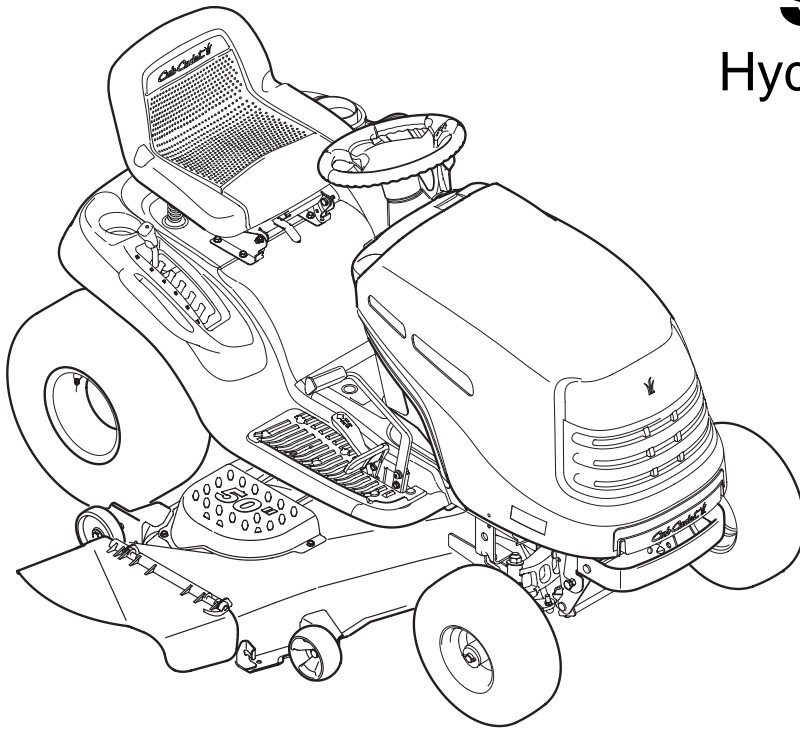
Cub Cadet

Parts Manual

SERIES 1000

Hydrostatic Lawn Tractor

Models LT1024



CUB CADET LLC, P.O. BOX 361131 CLEVELAND, OHIO 44136-0019

PRINTED IN U.S.A.

FORM NO. 769-01022.

1/16/04

MODEL LT1024

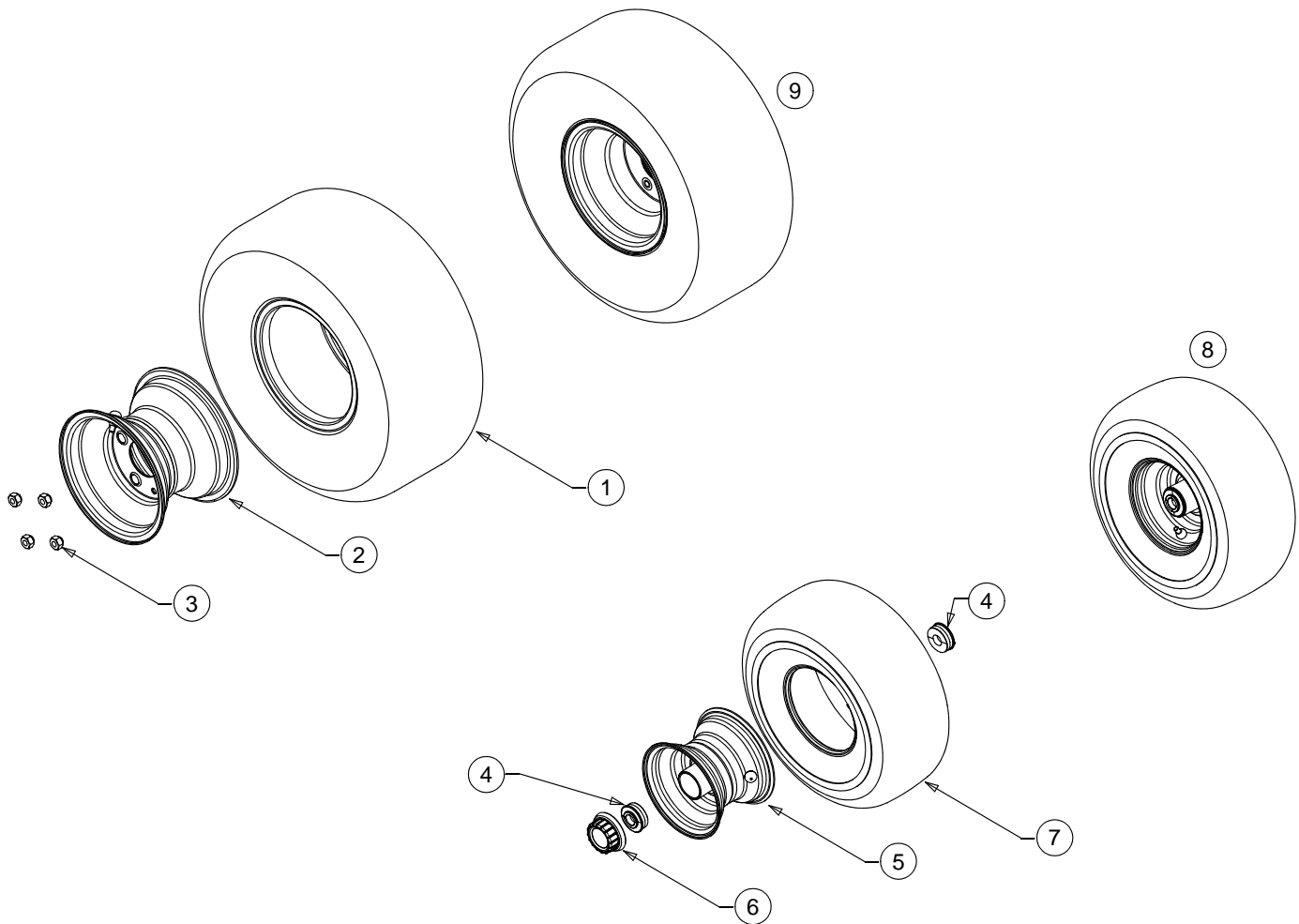
TABLE OF CONTENTS

DESCRIPTION	PAGE	DESCRIPTION	PAGE
Axle, Front	6	Fender	10
Battery	16	Frame	8
Brake Pedal	12	Fuel Tank	10
Head Lamp	18	Grille	18
Mower Deck, 50-inch	21	Hood	18
Pedal Controls	12	Deck Lift Handle/Linkage	11
Dash Panel	16	Muffler	15
Drive System	4	PTO Clutch	20
Electrical Sysytem	19	Seat	14
Engines	23	Steering	6
Engine Accessories	15	Wheels, Front & Rear	3

NOTE, For **painted parts**, please refer to the list of color codes below. Please add the applicable color code, wherever needed, to the part number to order a replacement part. For instance, if a part, numbered 700-xxxx, is painted Cub Yellow, the part number to order would be 700-xxxx-0716.

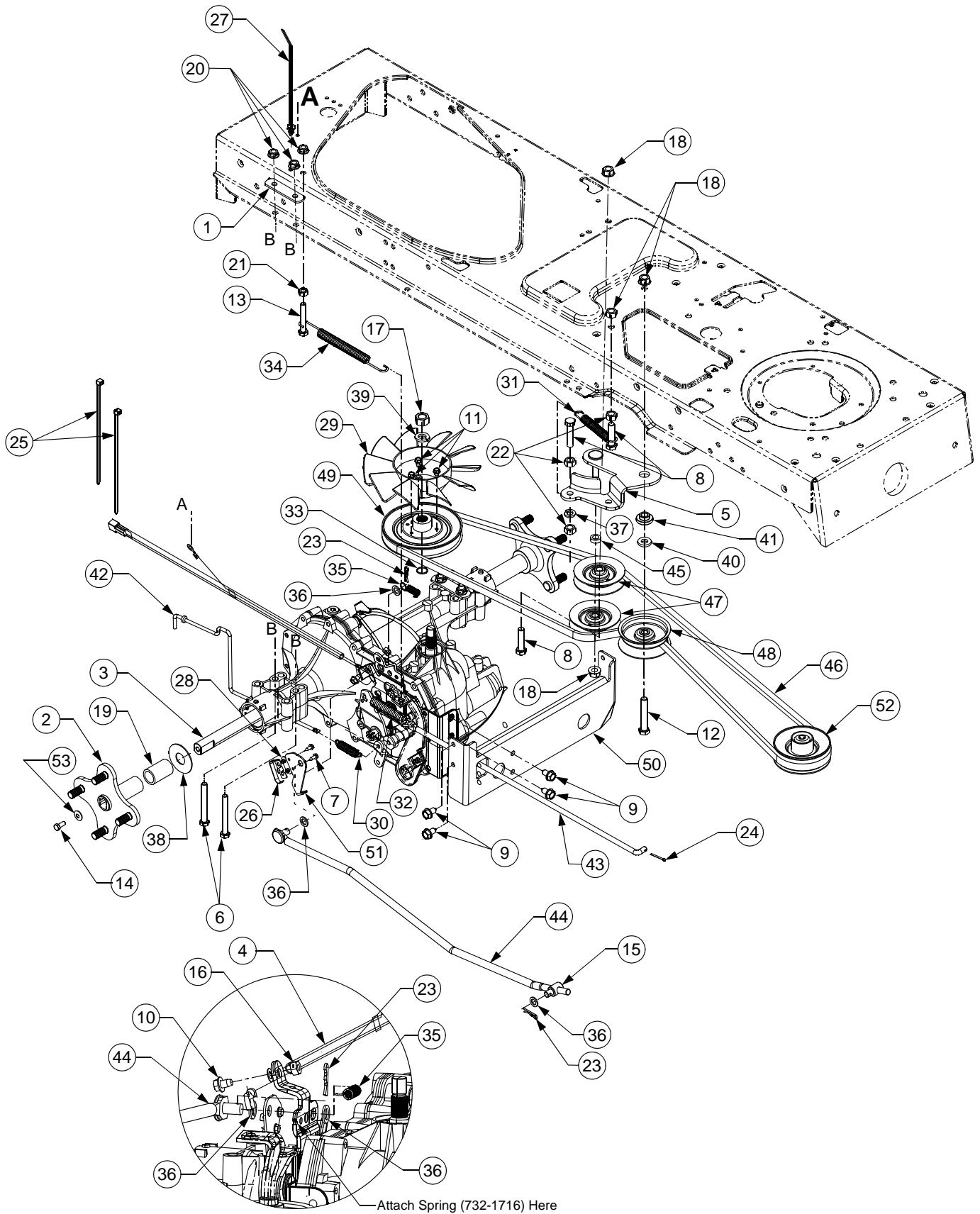
Cub Yellow: 0716
Cub Beige: 0499
Powder Black: 0637

WHEELS



REF. NO.	PART NUMBER	DESCRIPTION	QTY.
1	734-3189	Tire, Turf, <i>Cub Cadet</i> 20 x 9 x 8	2
2	634-0246A	Rim Assembly, 8.0 x 6.19 (4-Lug)	2
3	712-3050	Lug Nut, 7/16-14	8
4	741-3032	Bearing, Ball, .75 ID x 1.75 OD	4
5	634-04104	Rim Assembly, 6 x 4.5 (Included, Bearings, Spacer and Valve)	2
6	731-3020	Hub Cap	2
7	734-3186	Tire, Turf, <i>Cub Cadet</i> 15 x 6 x 6	2
8	634-04094	Wheel Assembly, <i>Cub Cadet</i> 15 x 6 x 6 (Includes Rim Ass'y, Tire and Fitting)	2
9	634-0245A	Wheel Assembly, <i>Cub Cadet</i> 20 x 9 x 8 (Includes Rim Ass'y, Tire and Valve)	2
—	737-0224	Gease Fitting	2
—	734-0255	Valve, Tubeless Air	4

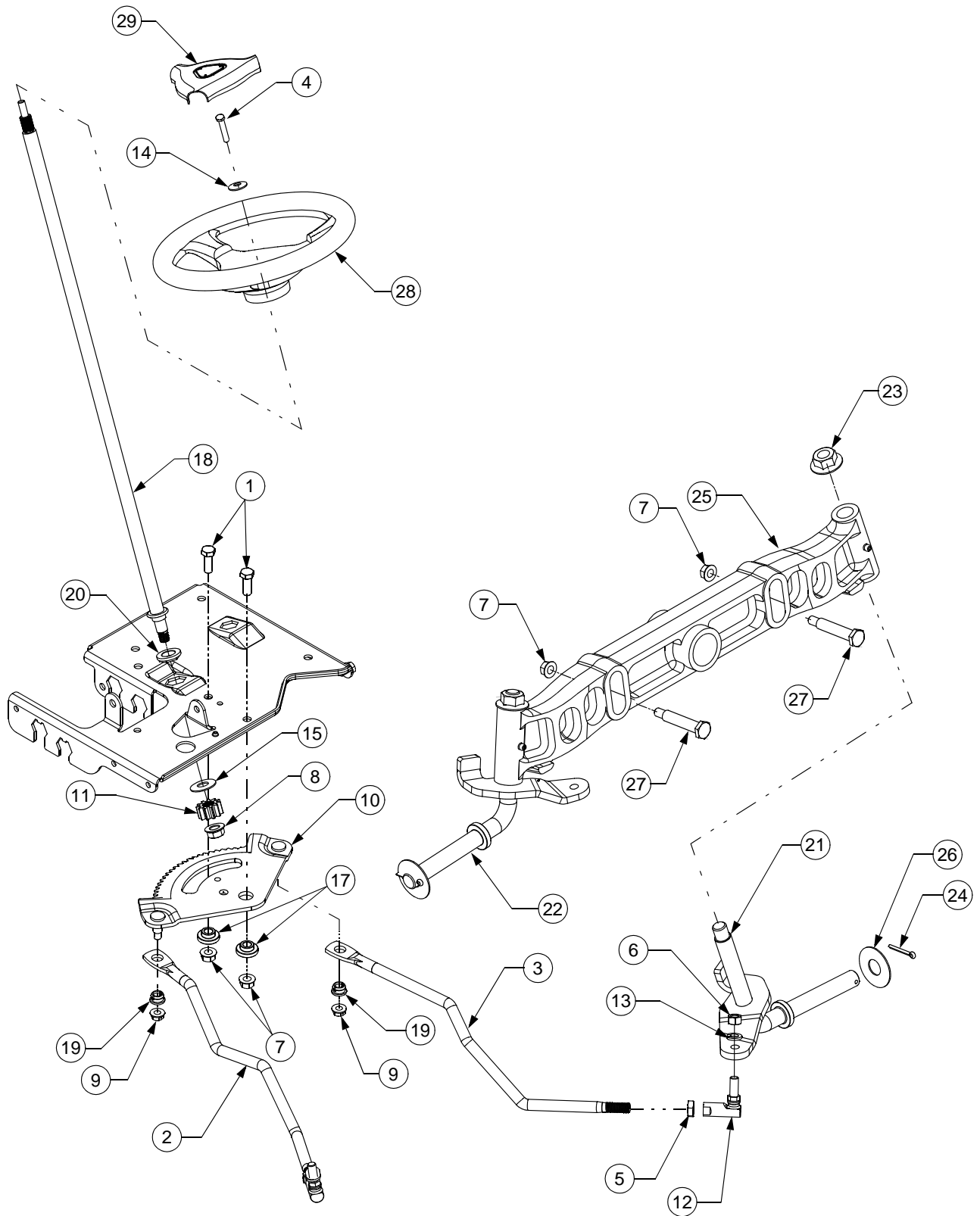
DRIVE SYSTEM



DRIVE SYSTEM

REF. NO.	PART NUMBER	DESCRIPTION	QTY.
1	17840	Bracket, Mounting, Transaxle	2
2	618-04154	Hub Assembly, Wheel	2
3	618-0319	Transmission, Hydrostatic	1
4	629-0949A	Harness Assembly, Ground & Reverse	1
5	783-04442	Bracket Assembly, Idler, Center Dbl	1
6	710-1266	Hex Cap Screw, 5/16-18,3.5, Gr5	4
7	710-0227	Screw, #8-18, 0.500	2
8	710-0344	Hex Cap Screw, 3/8-16, 1.50, Gr5	3
9	710-0726	Screw, 5/16-12, 0.75	6
10	710-0599	Screw, 1/4-20, 0.5	1
11	710-3007	Screw, #12-24, 0.375	3
12	710-3011	Hex Cap Screw, 3/8-16, 2.25, Gr5	1
13	710-3103	Hex Cap Screw, 5/16-18, 2.00, Gr5	1
14	710-0627	Hex Cap Screw, 5/16-24 x .750	2
15	711-0832	Ferrule, 3/8-24 x .375 Dia	1
16	712-0291	Nut, Hex Lock, 1/4-20	1
17	712-0333	Nut, Hex, 1/2-20, Gr2	1
18	712-0130	Nut, Nylon Lock, 3/8-16	4
19	731-04675	Sleeve, 1.5"	2
20	712-0429	Nut, Nylon Lock, 5/16-18, Gr5	5
21	712-3010	Nut, Hex, 5/16-18, Gr5	1
22	712-3017	Nut, Hex, 3/8-16, Gr8	3
23	714-0104	Pin, Cotter, .072 Dia. x 1.13 Lg	2
24	714-0111	Pin, Cotter, 3/32, 1.0	1
25	725-0157	Cable, Tie, 3/16 x .05 x 7.4	2
26	725-1644	Switch, Spring, Short	1
27	726-0154	Tie, Cable, Push Mount 7.5 Lg	1
28	726-0320	Plate, Insulator Nut	1
29	731-1449A	Fan, Blade, 10"	1
30	732-0209	Spring, .48 OD x 2.03 Extension	1
31	732-0429A	Spring, Extension, .50 Dia x 3.97 Lg	1
32	732-0716	Spring, Extension, .59 OD x 4.00 Lg	1
33	732-0729	Ring, Wire	1
34	732-0994	Spring, Extension, .500 Dia x 7.0 Lg	1
35	732-3118	Spring, Extension, 3/8 OD x 1.44 Lg	1
36	736-0140	Washer, Flat, .385 x .62 x .063	3
37	736-0169	Washer, Lock, 3/8 , Regular Duty	1
38	736-0866	Washer, Flat, .755 x 1.92 x .060	2
39	736-0921	Washer, Lock, 1/2 , Regular Duty	1
40	736-3010	Washer, Flat, .407 x .812 x .135 Hdn	1
41	738-0372B	Spacer, Shoulder, 1.00 x .38 x .38	1
42	747-1149	Rod, Hydro Bypass	1
43	747-1150	Rod, Brake, Hydro	1
44	747-1151	Rod, Control, Hydro	1
45	750-0535	Spacer, .376 ID x .625 OD x .22	1
46	754-0640	Belt, V Type, Poly (Use w/ 756-1166)	1
	754-0461	Belt, V Type, Poly (Use w/ 756-04111)	1
47	756-0116	Pulley, Idler, V Type x 3.06 Dia	2
48	756-0981A	Pulley, Idler, Flat 2.75 OD	1
49	756-1166	Pulley, Input, 5.0 Dia	1
	756-04111	Pulley, Engine, 4.11Dia.	1
50	783-0810	Bracket, Transmission, Torque Hydro	1
51	783-1019	Bracket, Actuator, Switch	1
52	756-0978A	Pulley, Engine, 3.56 Dia.	1
53	736-0242	Belle Washer	2

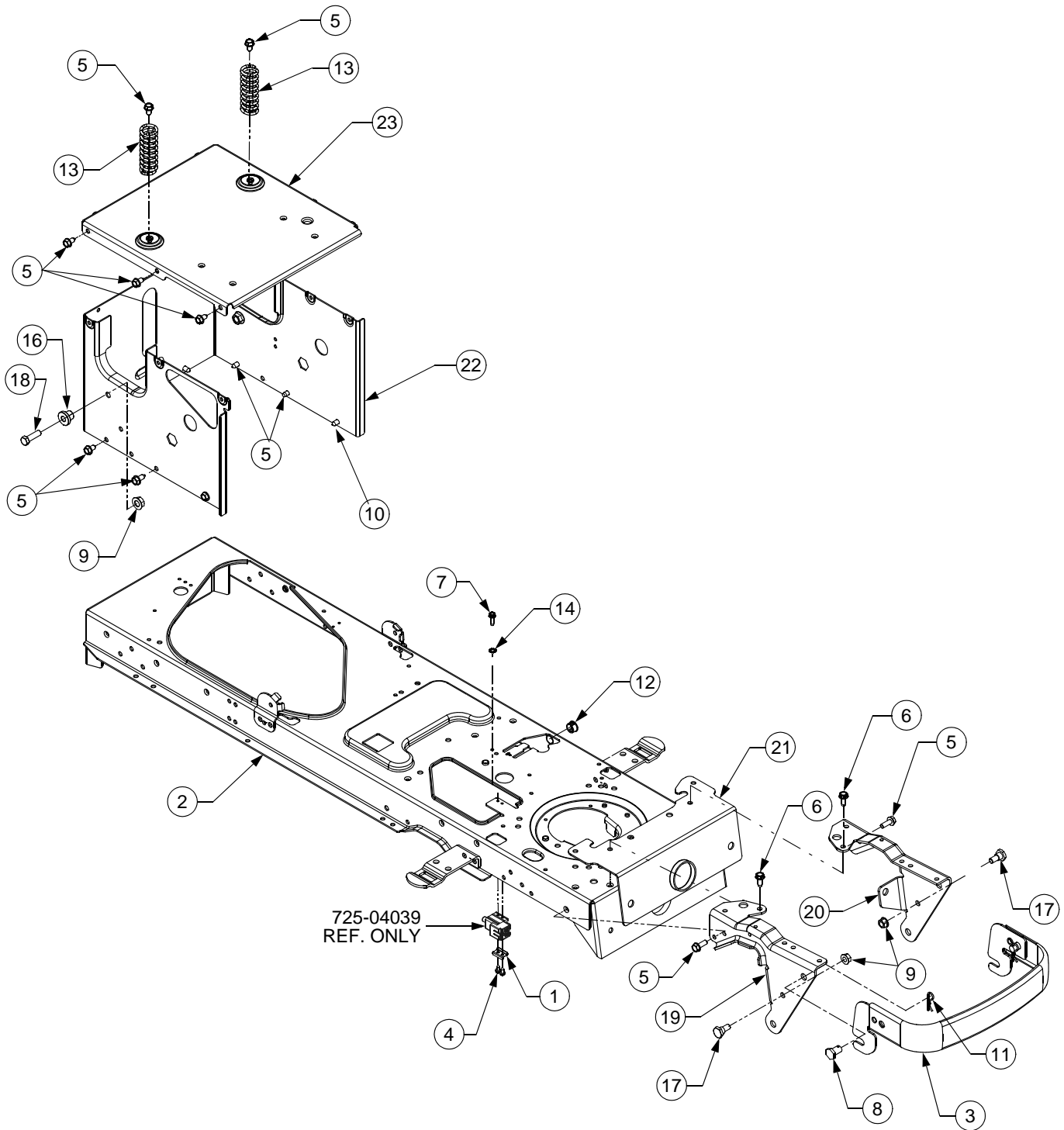
STEERING



STEERING

REF. NO.	PART NUMBER	DESCRIPTION	QTY.
1	710-0514	Hex Cap Screw, 3/8-16, 1.00, Gr5, Std	2
2	711-1408	Link, Drag, RH	1
3	711-1409A	Link, Drag, LH	1
4	710-1260A	Self-tapping Screw, 5/16-18 x .75	1
5	712-0240	Nut, Jam, 7/16-20, Gr2	2
6	712-0241	Nut, Hex, 3/8-24, Gr5	2
7	712-0130	Nut, Nylon Lock, 3/8-16	4
8	712-0459	Nut, Flange Lock, 7/16-20	1
9	712-0429	Nut, Nylon Lock, 5/16-18	2
10	717-1550E	Gear, Steering, 11/90 Ratio	1
11	717-1554	Gear, Pinion, Steering	1
12	723-0610	Ball Joint, 7/16-20	2
13	736-0169	Washer, Lock, 3/8 , Regular Duty	2
14	736-3004	Washer, Flat, .406 x .875 x .105	1
15	736-3084	Washer, Flat, .510 x 1.120 x .060	1
16	737-3007	Grease, Alvania Ep 2	1
17	738-0372B	Spacer, Shoulder, 1.00 x .38 x .38	2
18	738-04075	Shaft, Steering, .625 OD x 25.00 Lg	1
19	741-0475	Bushing, Plastic, .380 ID	2
20	741-0656	Bearing, Hex Flange, 5/8	1
21	683-04101	Axle Assembly, LH .750 Dia	1
22	683-04102	Axle Assembly, RH .750 Dia	1
23	712-0417A	Nut, Hex, Flange, 5/8-18	2
24	714-0162	Pin, Cot, 5/32, 1.25	2
25	719-0525C	Axle, Pivot, Cast .750 Dia	1
26	736-0866	Washer, Flat, .755 x 1.92 x .060	2
27	738-1011	Spacer, Shoulder, .500 x 2.230, 3/8-16	2
28	731-04008	Wheel, Steering, Three Spoke	1
29	731-04532	Cover, Steering Wheel	1

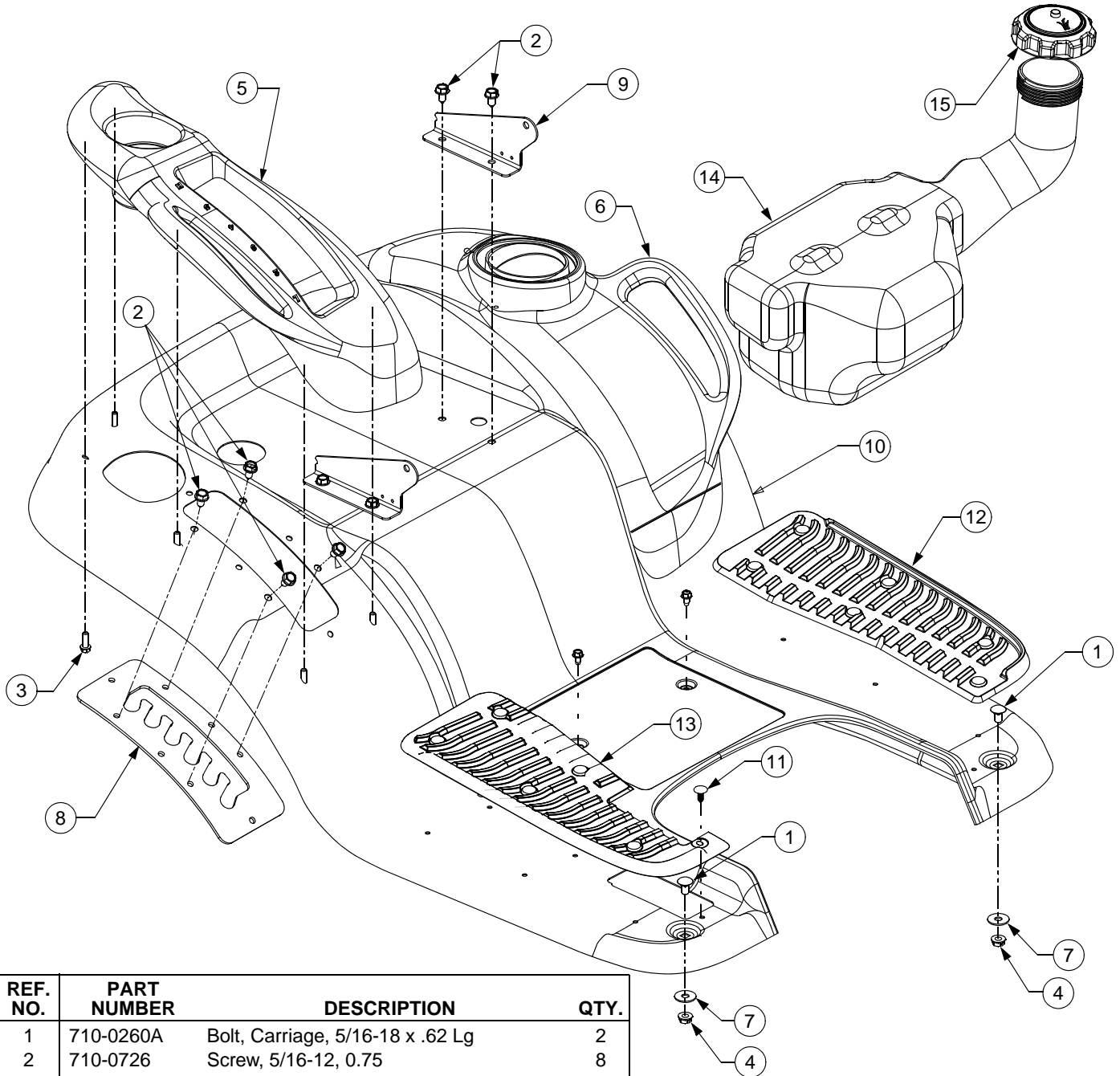
FRAME



FRAME

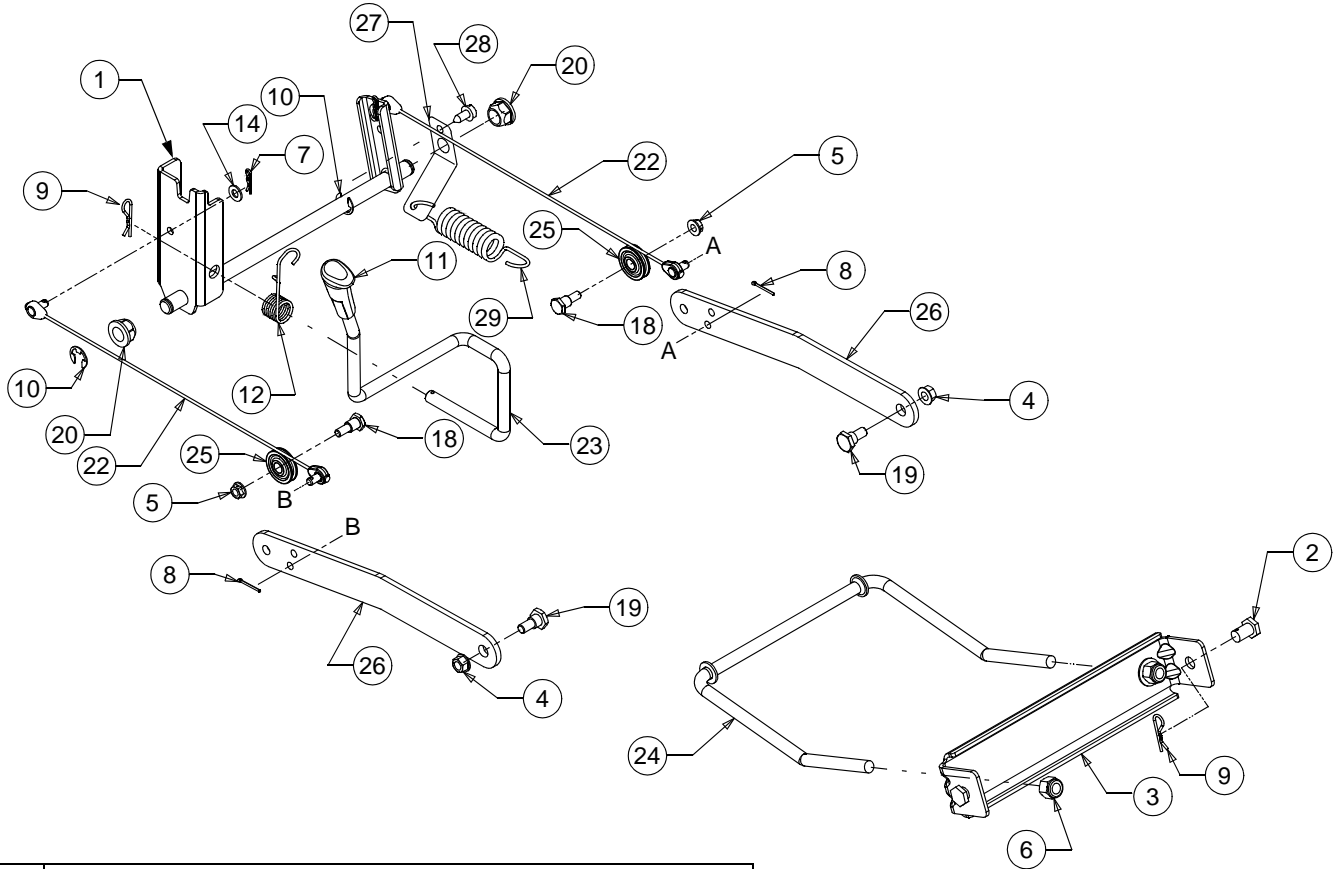
REF. NO.	PART NUMBER	DESCRIPTION	QTY.
1	17962	Plate, Switch	1
2	683-0304A	Frame Assembly, Lower	1
3	683-0612	Bumper Assembly	1
4	710-0224	Screw, Hex Wash. Hd. Tapp, 10-16 x .5	2
5	710-0726	Screw, Self-tapping, 5/16-18, 0.75	15
6	710-1260A	Screw, 5/16-18, 0.750	2
7	710-1652	Screw, Hex Wash. Hd. Tapp, 1/4-20 x 0.625	1
8	711-0332	Pin, Clevis, .50 Dia x .78 Lg	2
9	712-0130	Nut, Nylon Lock, 3/8-16	2
10	710-0607	Screw, Hex Wash. Tapp, 5/16-18 x .5	1
11	714-0145	Pin, Click, .092 x 1.64 Lg	2
12	741-04092	Snap Bushing	1
13	732-04035	Spring, Compression, 1.28 OD x 3.125 Lg	2
14	736-0222	Washer, Lock, Ext 1/4	2
16	738-04058	Shoulder Spacer	2
17	738-0143	Shoulder Screw, 3/8-16	2
18	710-3005	Hex Screw 3/8-16 x 1.25	2
19	783-0726C	Bracket, Pivot, Support RH	1
20	783-0727B	Bracket, Pivot, Support LH	1
21	783-0728	Bracket, Pivot, Bar	1
22	783-04330	Frame, Upper, Cub 1500	1
23	783-04329	Bracket, Frame, Seat	1

FENDER & FUEL TANK



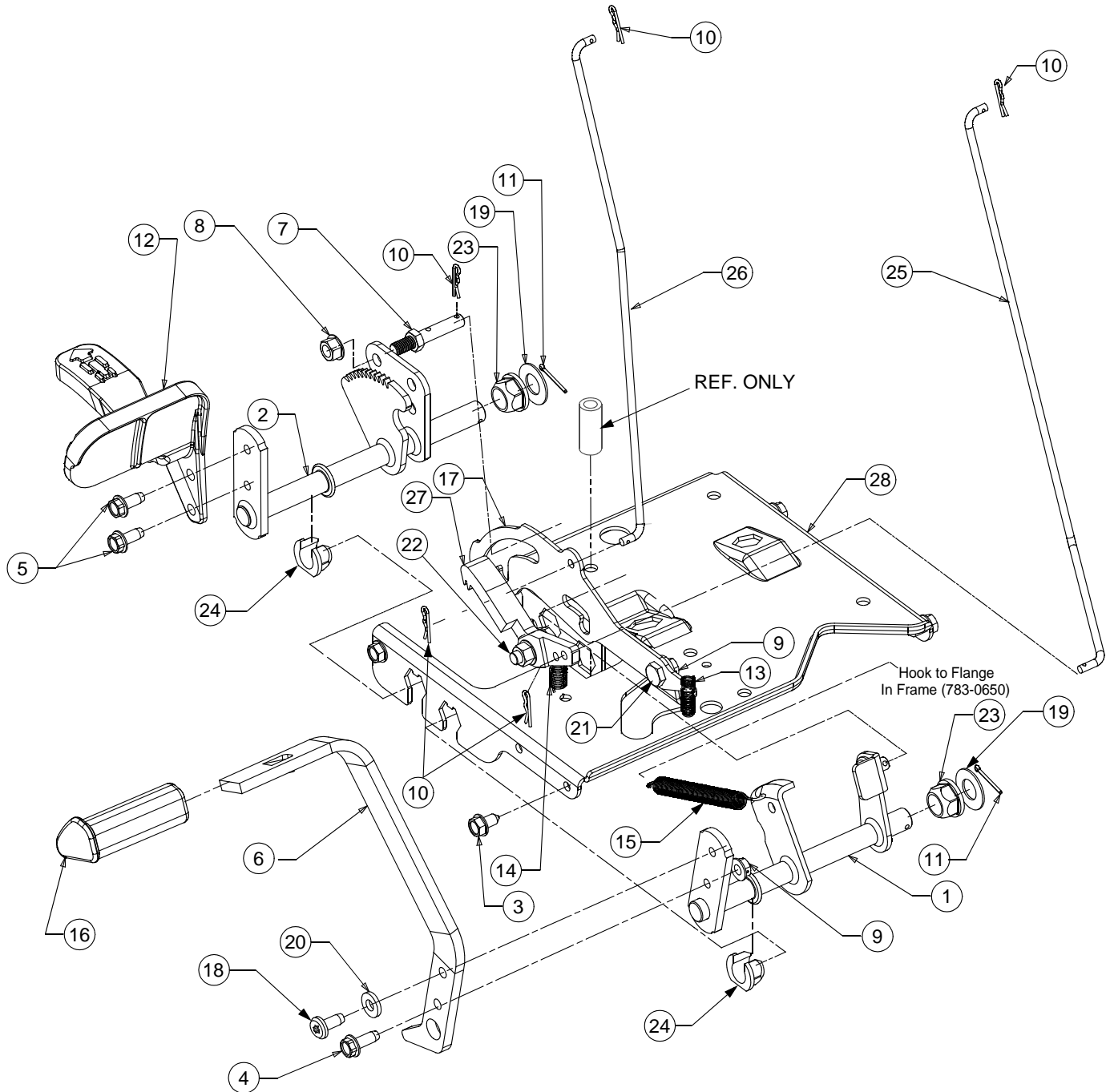
REF. NO.	PART NUMBER	DESCRIPTION	QTY.
1	710-0260A	Bolt, Carriage, 5/16-18 x .62 Lg	2
2	710-0726	Screw, 5/16-12, 0.75	8
3	710-0895	Screw, 1/4-15, 0.750	9
4	712-0429	Nut, Nylon Lock, 5/16-18	2
5	731-2616A	Cover, Fender, RH	1
6	731-2617	Cover, Fender, LH	1
7	736-3078	Washer, Flat, .349 x 1.00 x .063	2
8	783-0677	Bracket, Lift, Adjustment	1
9	783-0715B	Bracket, Seat, Mount	2
10	783-04398	Fender	1
11	726-3046	Clip, Ratchet, .250 Dia	12
12	735-0697	Pad, Foot, LH	1
13	735-0698A	Pad, Foot, RH	1
14	751-0819A	Tank, Fuel	1
15	751-3124B	Cap, Fuel	1
16	710-0599	Screw, Self-tapping, 1/4-20, 0.500	2

LIFT ASSEMBLY



REF. NO.	PART NUMBER	DESCRIPTION	QTY.
1	683-04079	Shaft Assembly, Lift	1
2	711-0332	Pin, Clevis, .50 Dia x .78 Lg	2
3	783-0720A	Bracket, Adjustment, Front Deck Rod	1
4	712-0130	Nut, Nylon Lock, 3/8-16	2
5	712-0429	Nut, Nylon Lock, 5/16-18, Gr5	2
6	712-3083	Nut, Hex Lock, 1/2-13, Gr8, Nylon	2
7	714-0104	Pin, Cotter, .072 Dia. x 1.13 Lg	2
8	714-0111	Pin, Cotter, 3/32, 1.0	2
9	714-04023	Pin, Click, .092 x 1.64 Lg	2
10	716-0106A	E-ring, .625 Dia. Shaft	2
11	720-0311	Grip, Handle	1
12	732-0874	Spring, Torsion	1
18	738-0138A	Screw, Hex Cap, 5/16-18x.620 Gr2	2
19	738-0143	Shoulder Screw, 3/8-16	2
20	741-0225	Bearing, Hex Flange	2
22	746-0968	Cable, Lift, 16.16 Lg	2
23	747-04155	Handle, Lift	1
24	747-1324	Rod, Deck, Front Adjustment .5" Dia	1
25	756-1154	Pulley, Roller	2
26	783-0678A	Lift, Arm	2
27	783-04462	Lift Bracket	1
28	710-0726	Screw, Self-tapping, 5/16-18 x.625	1
29	732-0934	Spring, Extension, 1.15 x 5.99	1

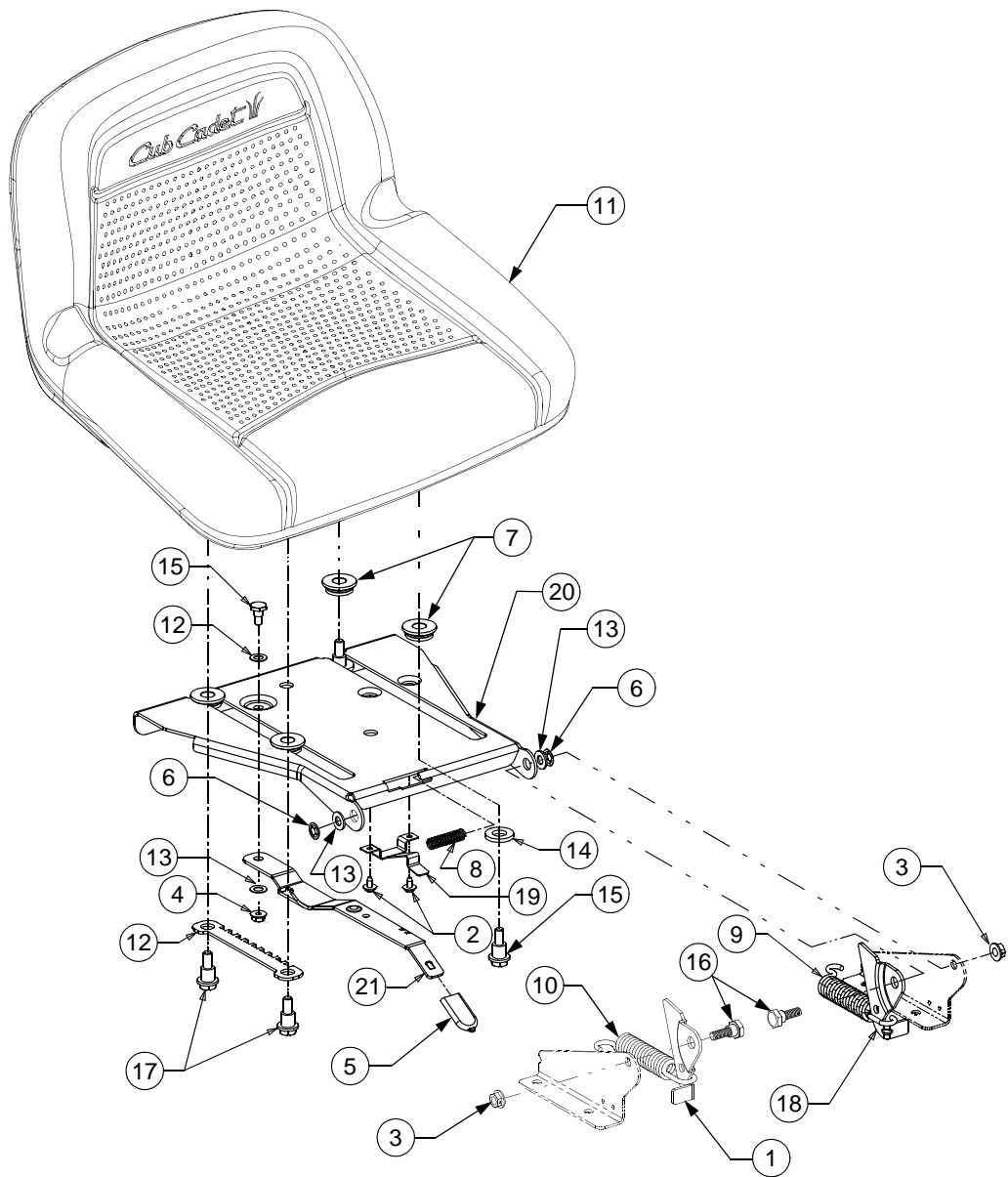
PEDAL ASSEMBLY



PEDAL ASSEMBLY

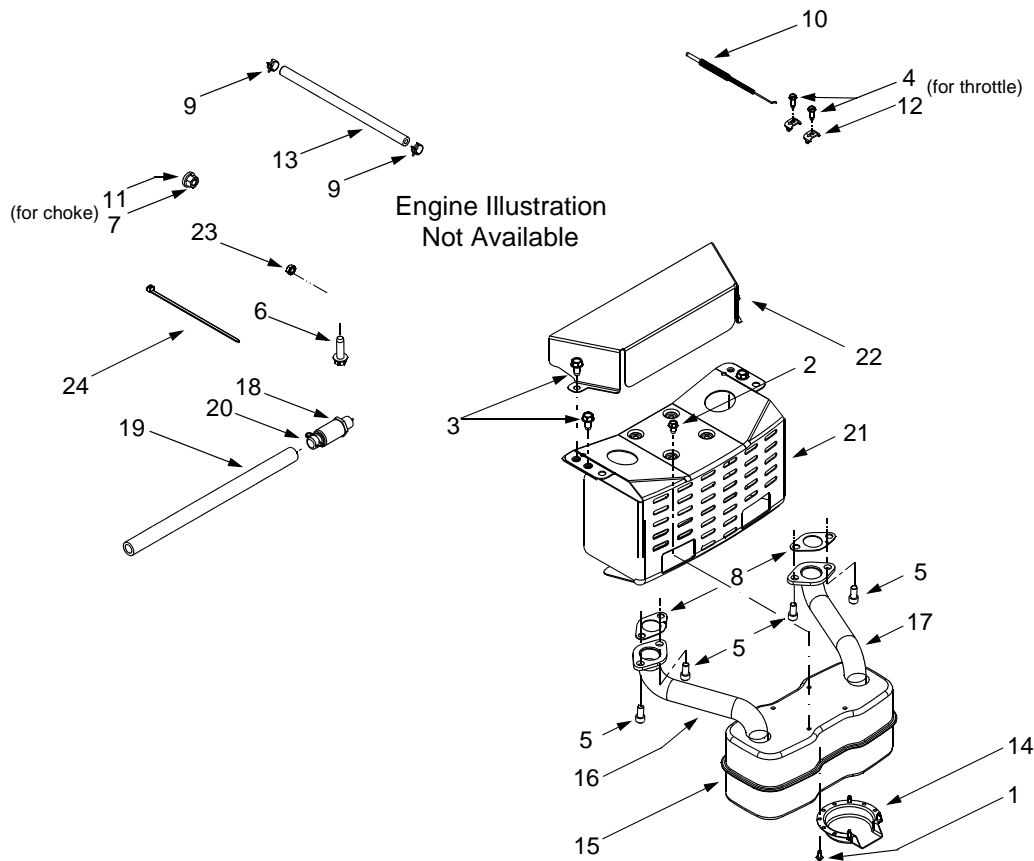
REF. NO.	PART NUMBER	DESCRIPTION	QTY.
1	647-0031B	Control Assembly, Brake	1
2	647-0049A	Control Assembly, Hydro	1
3	710-0726	Screw, Self-tapping, 5/16-12, 0.75	4
4	710-0650	Screw, Self-tapping, 5/16-18, 0.875	1
5	710-1260A	Screw, 5/16-18, 0.750	2
6	783-0773A	Pedal, Brake	1
7	711-1363	Pin, 3/8-16, 3/8 x 2.43 Lg	1
8	712-0130	Nut, Nylon Lock, 3/8-16	2
9	712-0429	Nut, Nylon Lock, 5/16-18, Gr5	2
10	714-0104	Pin, Cotter, .072 Dia. x 1.13 Lg	5
11	714-0111	Pin, Cotter, 3/32, 1.0	2
12	719-0584A	Pedal, Hydro Control	1
13	732-0335	Spring, Compression, .405 x 1.17	1
14	732-0955	Spring, Extension, .50 OD x 1.41 Lg	1
15	732-0963	Spring, Extension, .50 Dia x 6.37 Lg	1
16	735-3049	Pad, Brake, Control	1
17	783-0663C	Bracket, Lockout, Hydro	1
18	710-1611B	Screw, Torx Hd. Tapp. 5/16-18 x .75	1
19	736-0187	Washer, Flat .64 ID x 1.24 x .06	2
20	736-3008	Washer, Flat, .344 x .750 x .120	1
21	738-0155	Shoulder, Screw .437 x 1.62 Lg	1
22	738-0507B	Screw, Shoulder, .500 Dia x .434	1
23	741-0225	Bearing, Hex Flange	2
24	741-3065B	Bearing, Hex Flange, .628 ID, Split	2
25	747-04096	Rod, Control, Cruise	1
26	747-04093	Rod, Control, Brake Lock	1
27	748-04039B	Latch, Cruise	1
28	783-0653F	Bracket, Support, Stearing	1

ADJUSTABLE SEAT



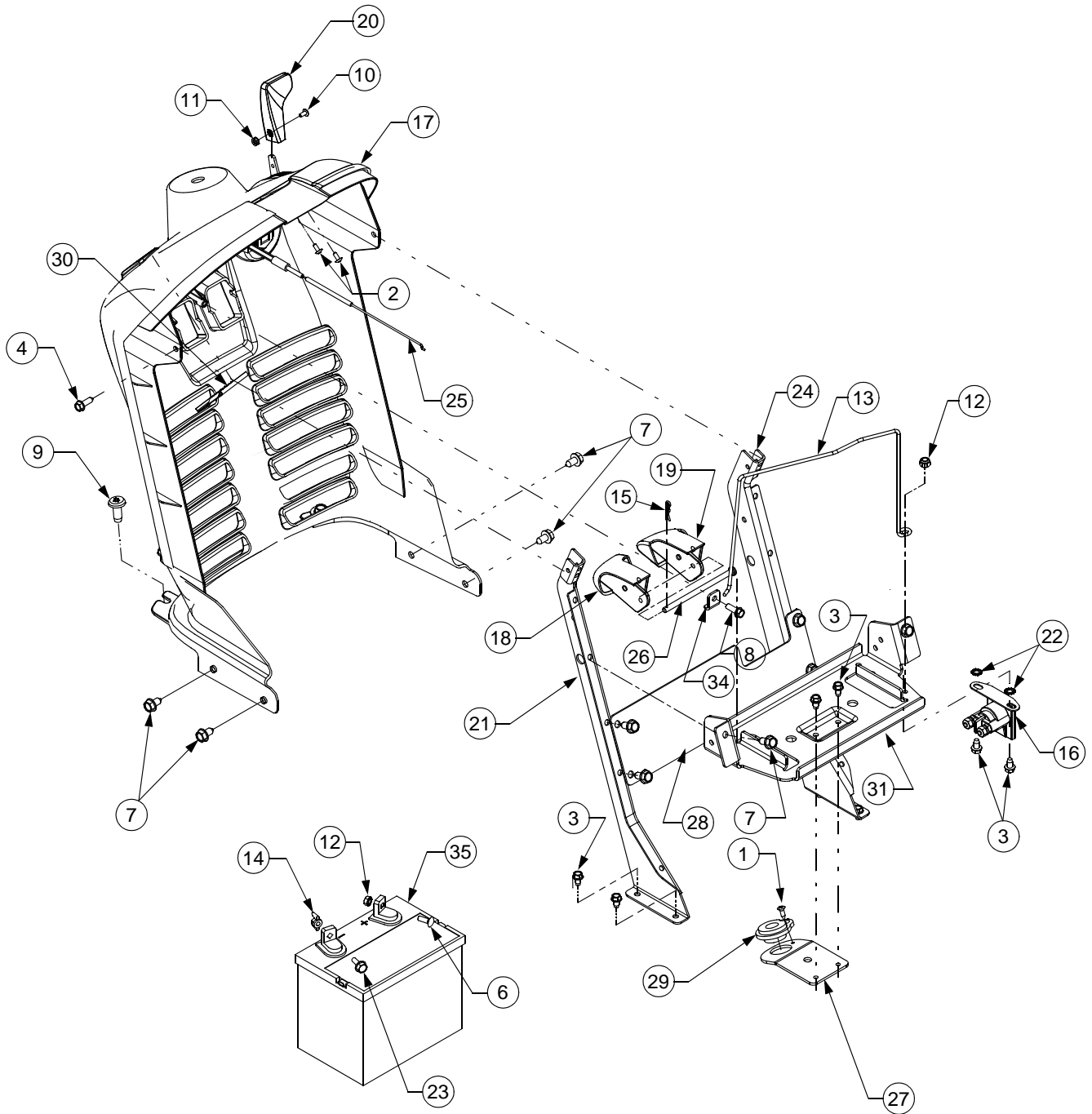
REF. NO.	PART NUMBER	DESCRIPTION	QTY.	REF. NO.	PART NUMBER	DESCRIPTION	QTY.
1	17239C	Bracket, Seat Lift		13	736-0275	Washer, Flat, .344 x .688 x .065	2
2	710-1268	Screw, #10-16, 0.375	2	14	736-3019	Washer, Flat, .531 x 1.062 x .134	2
3	712-0429	Nut, Nylon Lock, 5/16-18, Gr5	2	15	738-0137A	Screw, Shoulder, .340 x .285, 1/4-20	1
4	712-0324	Nut, Nylon Lock, 1/4-20	1	16	738-0296	Shoulder, Screw .437 x .286 Lg	2
5	720-0433	Grip, Seat, Adjustment (Yellow)	1	17	738-0966	Screw, Shoulder, .50 x .925, 3/8-16	4
6	726-0201	Nut, Speed, .3125 ID	2	18	783-0209C	Bracket, Seat Lift	1
7	731-04074	Spacer, Seat, Adjustment	4	19	783-0611	Stop, Seat, Adjustment	1
8	732-0499	Spring, Compression .41 OD x 1.50	1	20	783-0738A	Bracket, Pivot, Seat	1
9	732-1027	Spring, Extension, .80 Dia x 4.2 Lg.	1	21	783-0739A	Lever, Seat, Adjustment	1
10	732-1175	Spring, Extension, .815 Dia x 4.4 Lg.	1				
11	757-04004	Seat, Mid-back, V-1480	1				
12	783-0753	Selector, Seat, Adjustment	1				

ENGINE ACCESSORIES



REF. NO.	PART NO.	DESCRIPTION
1	710-0227	Self-tapping Screw, #8-18 x.50
2	710-0599	Self-tapping Screw, 1/4-20 x.50
3	710-0726	Self-tapping Screw, 5/16-18 x.625
4	710-1237	Screw, #10-32 x.625 (OHV V-Twin)
5	710-1314A	Socket Cap Screw, 5/16-18 x.625
6	710-1315	Self-tapping Screw, 3/8-16 x 1.25
7	712-3017	Hex Nut, 3/8-16
8	721-0460	Exhaust Gasket (OHV V-Twin)
9	726-0205	Hose Clamp
10	746-1086	Throttle Cable (OHV V-Twin)
11	736-0300	Lock Washer,.406 x.875 x.059
12	751B221535	Casing Clamp (OHV V-Twin)
13	751-0535	Fuel Line Hose
14	751-0564A	Muffler Deflector
15	751-0616A	Muffler, Twin Inlet (OHV V-Twin)
16	751-0650A	RH Exhaust Pipe (OHV V-Twin)
17	751-0651A	LH Exhaust Pipe (OHV V-Twin)
18	751-3140	Oil Drain Valve
19	751-3141	Oil Drain Hose
20	751-3142	Oil Drain Cap
21	783-0615C	Muffler Heat Shield
22	783-0625C	Engine Heat Shield (OHV V-Twin)
23	712-0271	Hex Sems Nut, 1/4-20 (OHV V-Twin)
24	725-0157	Cable Tie

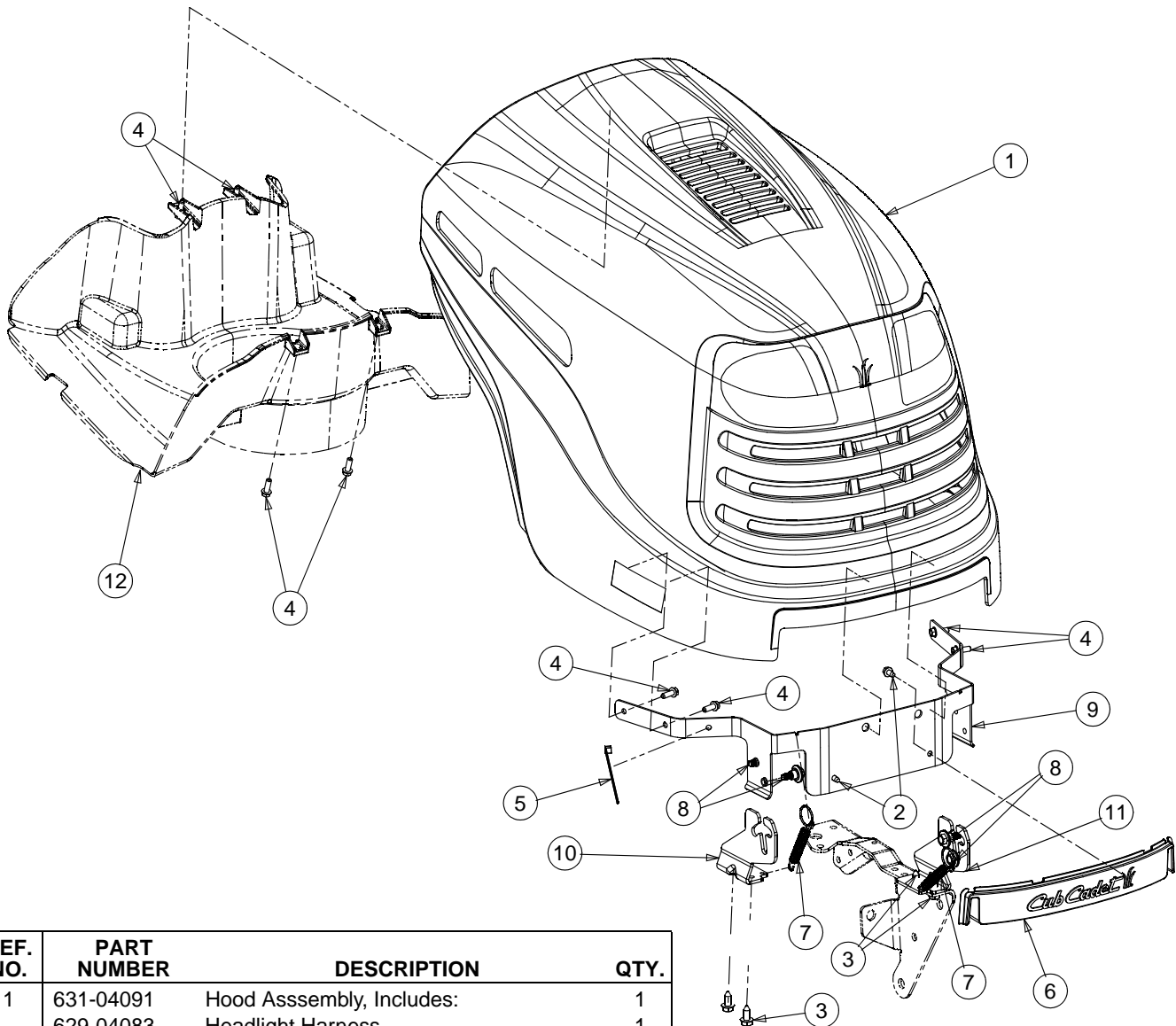
DASH PANEL



DASH PANEL

REF. NO.	PART NUMBER	DESCRIPTION	QTY.
1	710-0837	Screw, #10-16 x .625	1
2	710-0192	Screw, #10-24 x .375	2
3	710-0599	Screw, Self-tapping, 1/4-20, 0.500	6
4	710-0642	Screw, Hx. Wash. Hd, Tapp. 1/4-20 x .75	2
5	710-0650	Screw, Hx. Wash. Hd, Tapp, 5/16-18, .875	4
6	710-0703	Screw, Carriage, 1/4-20, .75,	1
7	710-0726	Screw, Hx. Wash. Hd, Tapp, 5/16-12 x .75	6
8	710-0895	Screw, 1/4-15, 0.750	1
9	710-1611B	Screw, Torx Hd. Tapp. 5/16-18 x .75	2
10	710-3217	Screw, Machine, #8-32, 0.375, Trus Phillips	1
11	712-0142	Nut, 8-32	1
12	712-0324	Nut, Nylon Lock, 1/4-20	1
13	747-04215	Strap, Battery	1
14	712-3087	Nut, Wing, 1/4-20	1
15	714-0104	Internal Cotter Pin, .072 x 1.13	1
16	725-1426	Solenoid, 12V, 100 Amp	1
17	731-04668	Dash	1
18	731-04294A	Lever, Dash, Cruise	1
19	731-04293A	Lever, Dash, Brake	1
20	731-3161	Knob, Throttle Control	1
21	783-04285	Dash Support, RH	1
22	736-0222	Washer, External Lock, 1/4	2
23	738-1132	Screw, Shoulder, 1/4-20, .25 x .15	1
24	783-04323	Dash Support, LH	1
25	746-04120	Control, Choke, 40.5	1
26	747-1323A	Rod, .250 Dia x 4.25 Lg.	1
27	783-04475	Bracket, Steering Support	1
28	783-04506	Plate, Dash Support	1
29	741-0587	Steering Colume Bearing	1
30	783-0462	Bracket, PTO Switch Retainer	1
31	783-1447A	Bracket, Support, Battery	1
34	783-1499	Bracket, Rod, Dash	1
35	725-1706A	Battery, 270 CCA	1

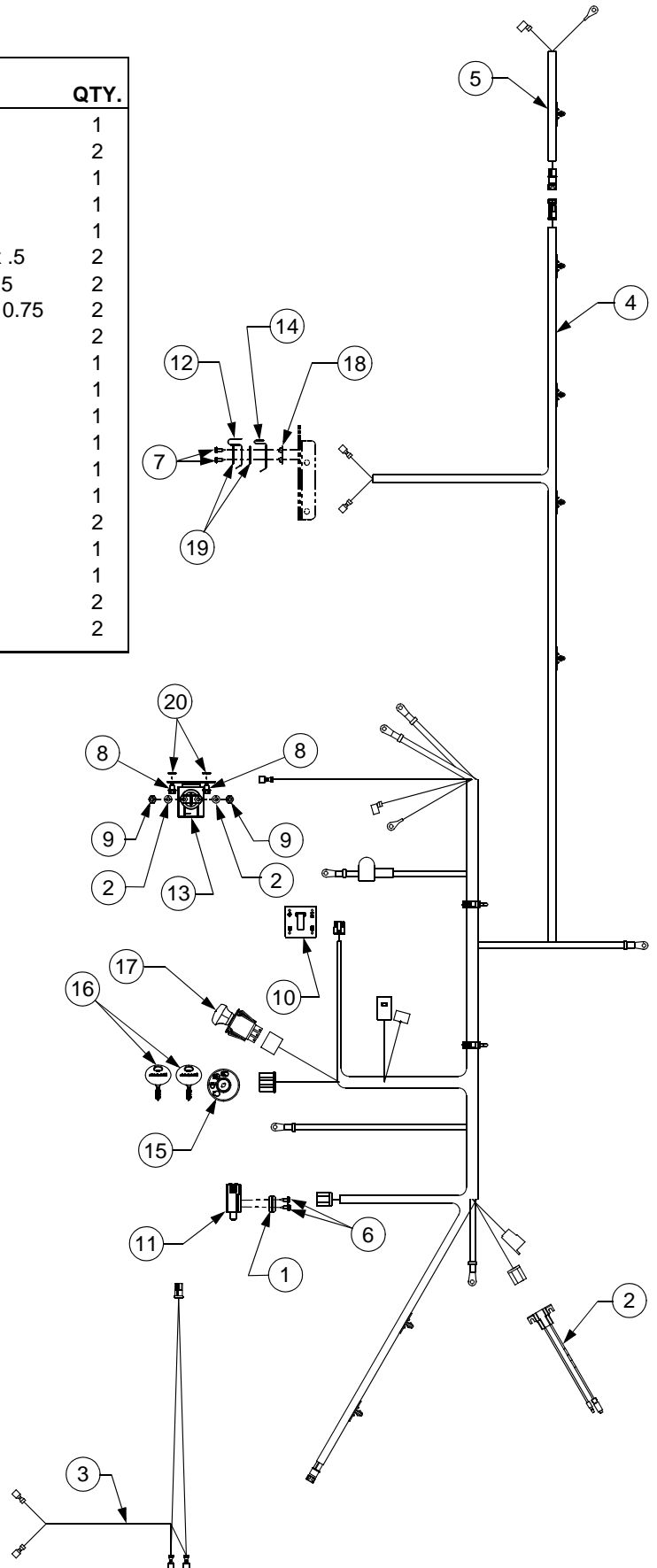
HOOD & GRILLE



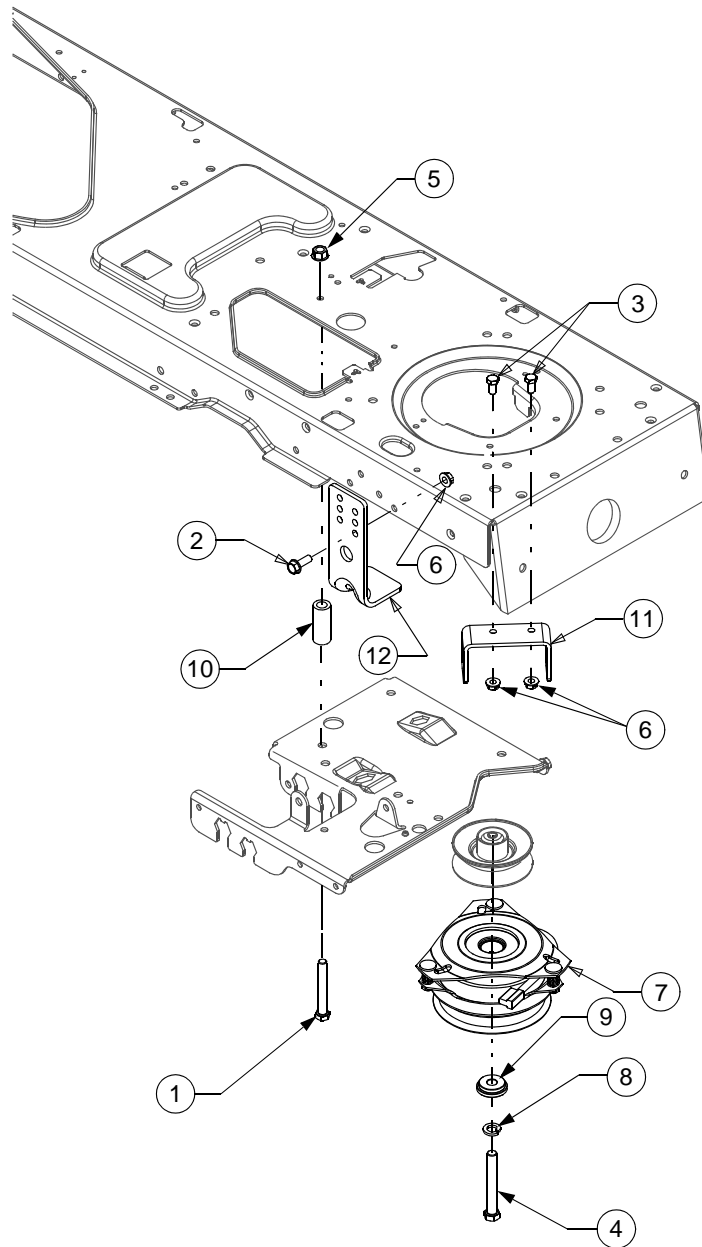
REF. NO.	PART NUMBER	DESCRIPTION	QTY.
1	631-04091	Hood Assembly, Includes:	1
	629-04083	Headlight Harness	1
	725-0963	Minirature Lamp, 12 V	2
	725-1649	Lamp Socket	2
	731-04567	Hood	1
	731-04577	Headlight Lens	1
	777X41562	Headlight Lens Reflector, RH	1
	777X41563	Headlight Lens Reflector, RH	1
2	710-0599	Screw, Hx. Wash, Hd,Tapp 1/4-20 x .5	2
3	710-0726	Self-tapping Screw, 5/16-18 x.625	4
4	710-0895	Screw, 1/4-15 x .75	8
5	725-0157	Cable Tie	1
6	731-04687A	Cover, Front Hood	1
7	732-04189B	Spring, .46 x 4.12	2
8	738-04091	Shoulder Screw, .43 x .29 x 5/16-18	4
9	783-04428	Pivot Bracket	1
10	783-04464A	Pivot Bracket, Hood, RH	1
11	783-04465A	Pivot Bracket, Hood, LH	1
12	731-04579	Hood Plenum	1

ELECTRICAL SYSTEM

REF. NO.	PART NUMBER	DESCRIPTION	QTY.
1	17962	Plate, Switch	1
2	736-0329	Washer, Lock, 1/4	2
3	629-04083	Harness Assembly, Headlight	1
4	629-04079	Harness Assembly	1
5	629-04082	Harness Assembly, Safety, Reverse	1
6	710-0224	Screw, Hx. Wash. Hd. Tapp, 10-16 x .5	2
7	710-0227	Screw, Hx. Wash. Hd. Tapp, 8-18 x .5	2
8	710-0642	Screw, Hx. Wash. Hd. Tapp, 1/4-20, 0.75	2
9	712-3006	Nut, Hex, 1/4-20, Gr5	2
10	725-04022	Indicator/ Meter Hour	1
11	725-04039	Switch, Interlock	1
12	725-1303	Switch, Outer Seat Spring	1
13	725-1426	Solenoid, Starter, 12V	1
14	725-1439	Switch, Inner Seat Spring	1
15	725-1741	Switch, Key, 4-Position	1
16	725-2054	Key, Switch, Plastic	2
17	725-04175	Switch, Electric PTO, Yellow Knob	1
18	726-0278	Plate, Insulator Boss	1
19	726-0279	Plate, Insulator	2
20	736-0222	Washer, Lock, Ext 1/4	2

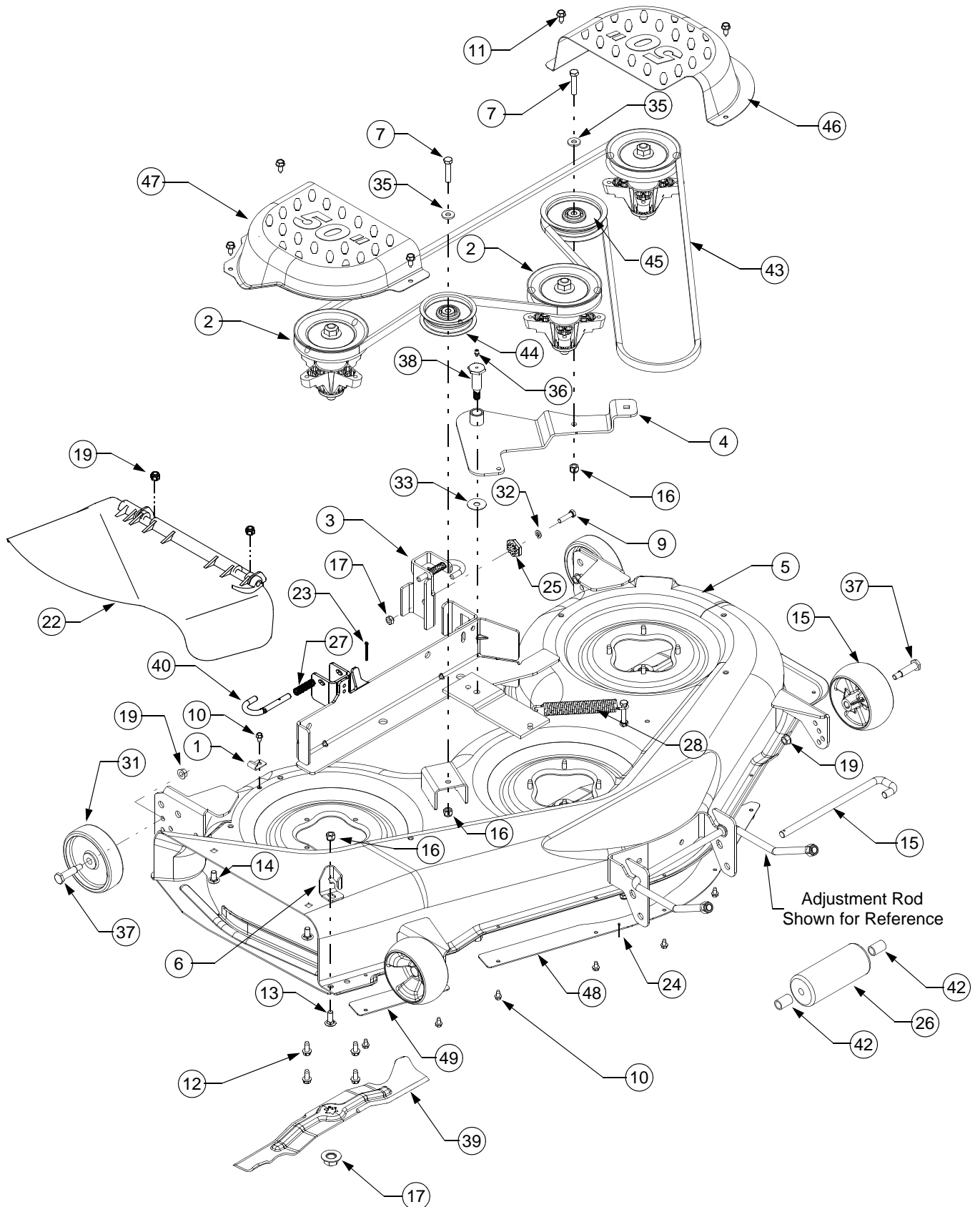


POWER TAKE-OFF (PTO) SYSTEM



REF. NO.	PART NUMBER	DESCRIPTION	QTY.
1	710-0859	Screw, 3/8-16 x 2.5 GR5	1
2	710-0276	Screw, 5/16-12, .75 GR5	1
3	710-3025	Screw, 5/16-18, .625 GR5	2
4	710-0561	Screw, Hex Cap, 7/16-20 x 2.5 GR5	1
5	712-0130	Nut, Nylon Lock, 3/8-16	2
6	712-0429	Nut, Nylon Lock, 5/16-18	3
7	717-04080	Clutch, Electric PTO	1
8	736-0171	Washer, Lock, 7/16, Regular Duty	1
9	738-0785	Spacer, Shoulder, 1.38 x .445 x .36	1
10	748-0415B	Spacer, 3/8 x 1.54	1
11	783-1003	Bracket, Clutch	1
12	783-04467	Deck Stop	1

50-INCH MOWER DECK



50-INCH MOWER DECK

REF. NO.	PART NUMBER	DESCRIPTION	QTY.
1	16606	Hook, Retainer	1
2	618-04129	Spindle Assembly	3
3	683-0254	Hanger Bracket Assembly	1
4	683-04098	Idler Bracket	1
5	683-04120	Weldment, 50-inch Deck	1
6	703-3279	Chute Stop	1
7	710-0347	Screw, 3/8-16, 1.75	2
8	710-0395	Screw, 5/16-18 x 2.25	1
9	710-0528	Screw, 5/16-18, 1.25, Gr5	1
10	710-0599	Screw, Self-tapping, 1/4-20 x 0.5	8
11	710-0726	Screw, Self-tapping, 5/16-18 x .625	6
12	710-1260A	Screw, Self-tapping, 5/16-18 x .75	12
13	710-3168	Screw, Carriage, 3/8-16 x 1.0	1
14	710-3178	Screw, Carriage, 3/8-16 x .75	2
15	711-1737	Pin, Roller, 10.06	1
16	712-0130	Nut, Nylon Lock, 3/8-16	5
17	712-0417A	Nut, Hex, Flange, 5/8-18	3
18	712-0429	Nut, Nylon Lock, 5/16-18	1
19	712-0431	Nut, Flange Lock, 3/8-16	4
20	712-3010	Nut, Hex, 5/16-18, Gr5	1
21	712-3019	Nut, 7/16-14	1
22	631-04070	Chute Assembly, Side Discharge	1
23	714-0470	Pin, Cotter, 1/8 x 1.25	2
24	714-3004	Pin, Cotter, 3/32 x 1.25	1
25	717-04074	Deck Adjustment Gear	1
26	731-3005	Roller, Front	1
27	732-0306A	Spring, Compression, .531 x 1.75	2
28	732-0459	Spring, Extension, .94 x 6.74	1
30	734-04039	Deck Wheel, 5.0	2
31	734-0973	Deck Wheel, 5.0	2
32	736-0119	Washer, Lock, 5/16, Regular Duty	2
34	736-0407	Washer, Bell, .45 x 1.0 x .062	1
35	736-3072	Washer, Flat, .38 x .93 x .110	2
36	737-3000	Fitting, Lube, 3/16	1
37	738-0373	Shoulder Screw	4
38	738-3005	Screw, Shoulder, .68 x 1.59	1
39	742-04068	Blade (2-n-1), 17.9"	3
40	747-1116	Rod, Handle, Deck Release .375 Dia	2
42	750-0151	Spacer, .550 x .755 x 1.1	2
43	754-04048	Belt, V-Type, Aramid	1
44	756-0627B	Pulley, Idler, 3.5"	1
45	756-1229	Pulley, Idler, 4.06"	1
46	783-04399	LH Belt Cover	1
47	783-04400	RH Belt Cover	1
48	783-04414	Deck Skirt, Center	1
49	783-04415	Deck Skirt, RH	1

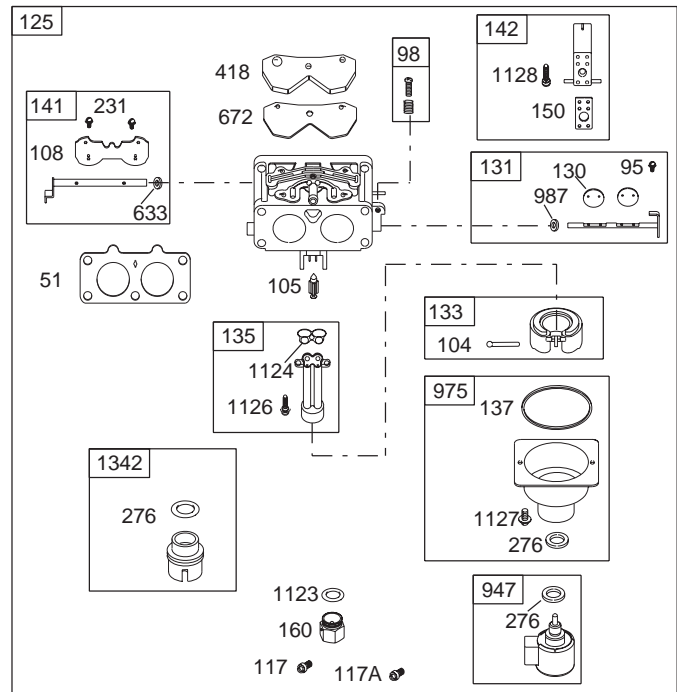
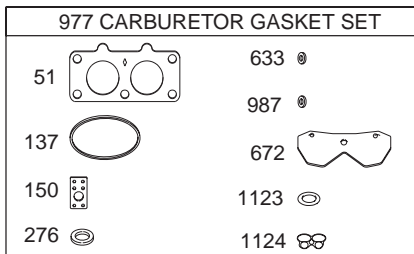
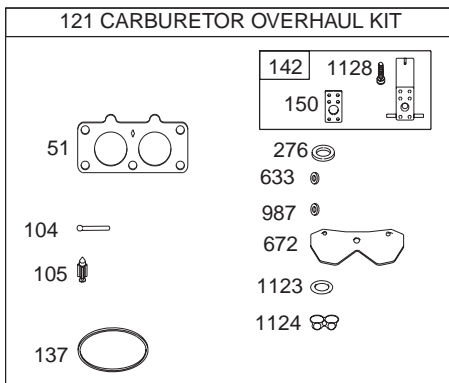
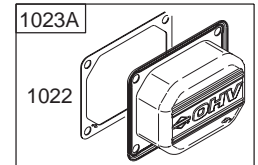
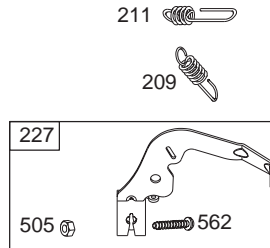
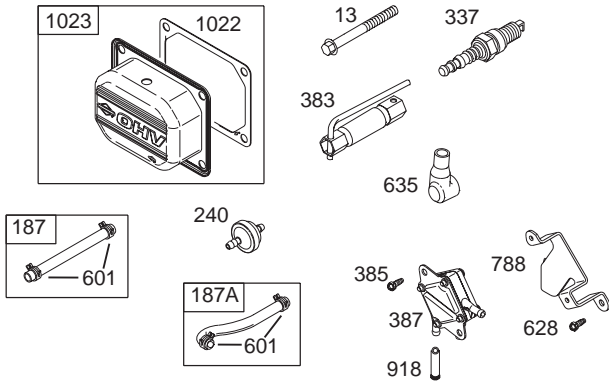
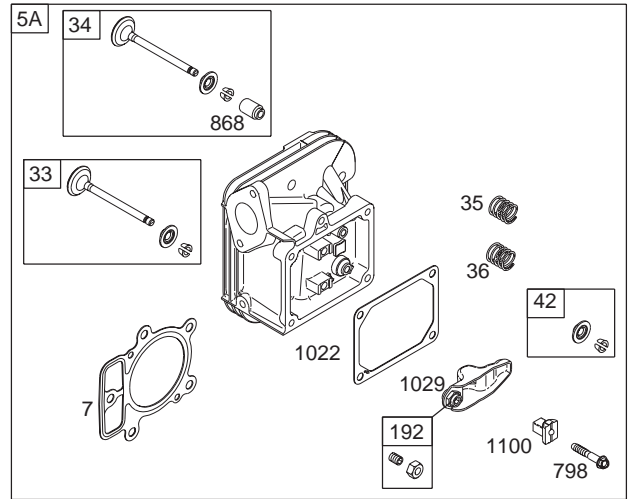
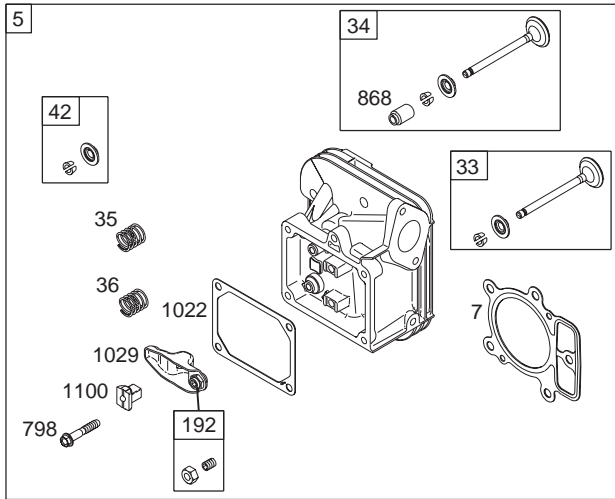
ENGINE (LT1024)

This diagram illustrates the assembly of the LT1024 engine. The central component is the engine block (1), which is surrounded by various accessories and structural parts. Key components include the cylinder head (2), intake manifold (3), and various gaskets and seals (e.g., 26, 27, 28, 29, 30, 31, 32, 33, 34, 35, 36, 37, 38, 39, 40, 41, 42, 43, 44, 45, 46, 47, 48, 49, 50, 51, 52, 53, 54, 55, 56, 57, 58, 59, 60, 61, 62, 63, 64, 65, 66, 67, 68, 69, 70, 71, 72, 73, 74, 75, 76, 77, 78, 79, 80, 81, 82, 83, 84, 85, 86, 87, 88, 89, 90, 91, 92, 93, 94, 95, 96, 97, 98, 99, 100, 101, 102, 103, 104, 105, 106, 107, 108, 109, 110, 111, 112, 113, 114, 115, 116, 117, 118, 119, 120, 121, 122, 123, 124, 125, 126, 127, 128, 129, 130, 131, 132, 133, 134, 135, 136, 137, 138, 139, 140, 141, 142, 143, 144, 145, 146, 147, 148, 149, 150, 151, 152, 153, 154, 155, 156, 157, 158, 159, 160, 161, 162, 163, 164, 165, 166, 167, 168, 169, 170, 171, 172, 173, 174, 175, 176, 177, 178, 179, 180, 181, 182, 183, 184, 185, 186, 187, 188, 189, 190, 191, 192, 193, 194, 195, 196, 197, 198, 199, 200, 201, 202, 203, 204, 205, 206, 207, 208, 209, 210, 211, 212, 213, 214, 215, 216, 217, 218, 219, 220, 221, 222, 223, 224, 225, 226, 227, 228, 229, 230, 231, 232, 233, 234, 235, 236, 237, 238, 239, 240, 241, 242, 243, 244, 245, 246, 247, 248, 249, 250, 251, 252, 253, 254, 255, 256, 257, 258, 259, 260, 261, 262, 263, 264, 265, 266, 267, 268, 269, 270, 271, 272, 273, 274, 275, 276, 277, 278, 279, 280, 281, 282, 283, 284, 285, 286, 287, 288, 289, 290, 291, 292, 293, 294, 295, 296, 297, 298, 299, 300, 301, 302, 303, 304, 305, 306, 307, 308, 309, 310, 311, 312, 313, 314, 315, 316, 317, 318, 319, 320, 321, 322, 323, 324, 325, 326, 327, 328, 329, 330, 331, 332, 333, 334, 335, 336, 337, 338, 339, 340, 341, 342, 343, 344, 345, 346, 347, 348, 349, 350, 351, 352, 353, 354, 355, 356, 357, 358, 359, 360, 361, 362, 363, 364, 365, 366, 367, 368, 369, 370, 371, 372, 373, 374, 375, 376, 377, 378, 379, 380, 381, 382, 383, 384, 385, 386, 387, 388, 389, 390, 391, 392, 393, 394, 395, 396, 397, 398, 399, 400, 401, 402, 403, 404, 405, 406, 407, 408, 409, 410, 411, 412, 413, 414, 415, 416, 417, 418, 419, 420, 421, 422, 423, 424, 425, 426, 427, 428, 429, 430, 431, 432, 433, 434, 435, 436, 437, 438, 439, 440, 441, 442, 443, 444, 445, 446, 447, 448, 449, 450, 451, 452, 453, 454, 455, 456, 457, 458, 459, 460, 461, 462, 463, 464, 465, 466, 467, 468, 469, 470, 471, 472, 473, 474, 475, 476, 477, 478, 479, 480, 481, 482, 483, 484, 485, 486, 487, 488, 489, 490, 491, 492, 493, 494, 495, 496, 497, 498, 499, 500, 501, 502, 503, 504, 505, 506, 507, 508, 509, 510, 511, 512, 513, 514, 515, 516, 517, 518, 519, 520, 521, 522, 523, 524, 525, 526, 527, 528, 529, 530, 531, 532, 533, 534, 535, 536, 537, 538, 539, 540, 541, 542, 543, 544, 545, 546, 547, 548, 549, 550, 551, 552, 553, 554, 555, 556, 557, 558, 559, 560, 561, 562, 563, 564, 565, 566, 567, 568, 569, 570, 571, 572, 573, 574, 575, 576, 577, 578, 579, 580, 581, 582, 583, 584, 585, 586, 587, 588, 589, 590, 591, 592, 593, 594, 595, 596, 597, 598, 599, 600, 601, 602, 603, 604, 605, 606, 607, 608, 609, 610, 611, 612, 613, 614, 615, 616, 617, 618, 619, 620, 621, 622, 623, 624, 625, 626, 627, 628, 629, 630, 631, 632, 633, 634, 635, 636, 637, 638, 639, 640, 641, 642, 643, 644, 645, 646, 647, 648, 649, 650, 651, 652, 653, 654, 655, 656, 657, 658, 659, 660, 661, 662, 663, 664, 665, 666, 667, 668, 669, 670, 671, 672, 673, 674, 675, 676, 677, 678, 679, 680, 681, 682, 683, 684, 685, 686, 687, 688, 689, 690, 691, 692, 693, 694, 695, 696, 697, 698, 699, 700, 701, 702, 703, 704, 705, 706, 707, 708, 709, 710, 711, 712, 713, 714, 715, 716, 717, 718, 719, 720, 721, 722, 723, 724, 725, 726, 727, 728, 729, 730, 731, 732, 733, 734, 735, 736, 737, 738, 739, 740, 741, 742, 743, 744, 745, 746, 747, 748, 749, 750, 751, 752, 753, 754, 755, 756, 757, 758, 759, 760, 761, 762, 763, 764, 765, 766, 767, 768, 769, 770, 771, 772, 773, 774, 775, 776, 777, 778, 779, 780, 781, 782, 783, 784, 785, 786, 787, 788, 789, 790, 791, 792, 793, 794, 795, 796, 797, 798, 799, 800, 801, 802, 803, 804, 805, 806, 807, 808, 809, 810, 811, 812, 813, 814, 815, 816, 817, 818, 819, 820, 821, 822, 823, 824, 825, 826, 827, 828, 829, 830, 831, 832, 833, 834, 835, 836, 837, 838, 839, 8

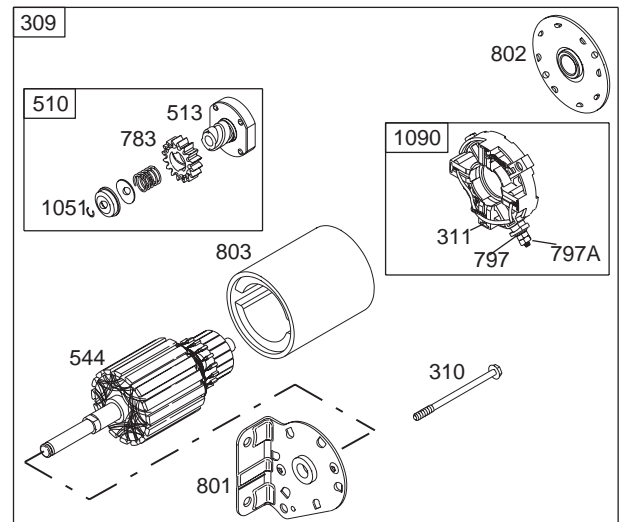
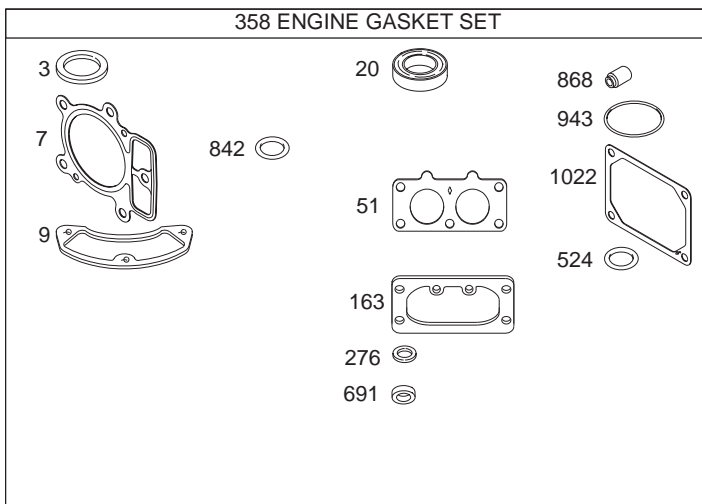
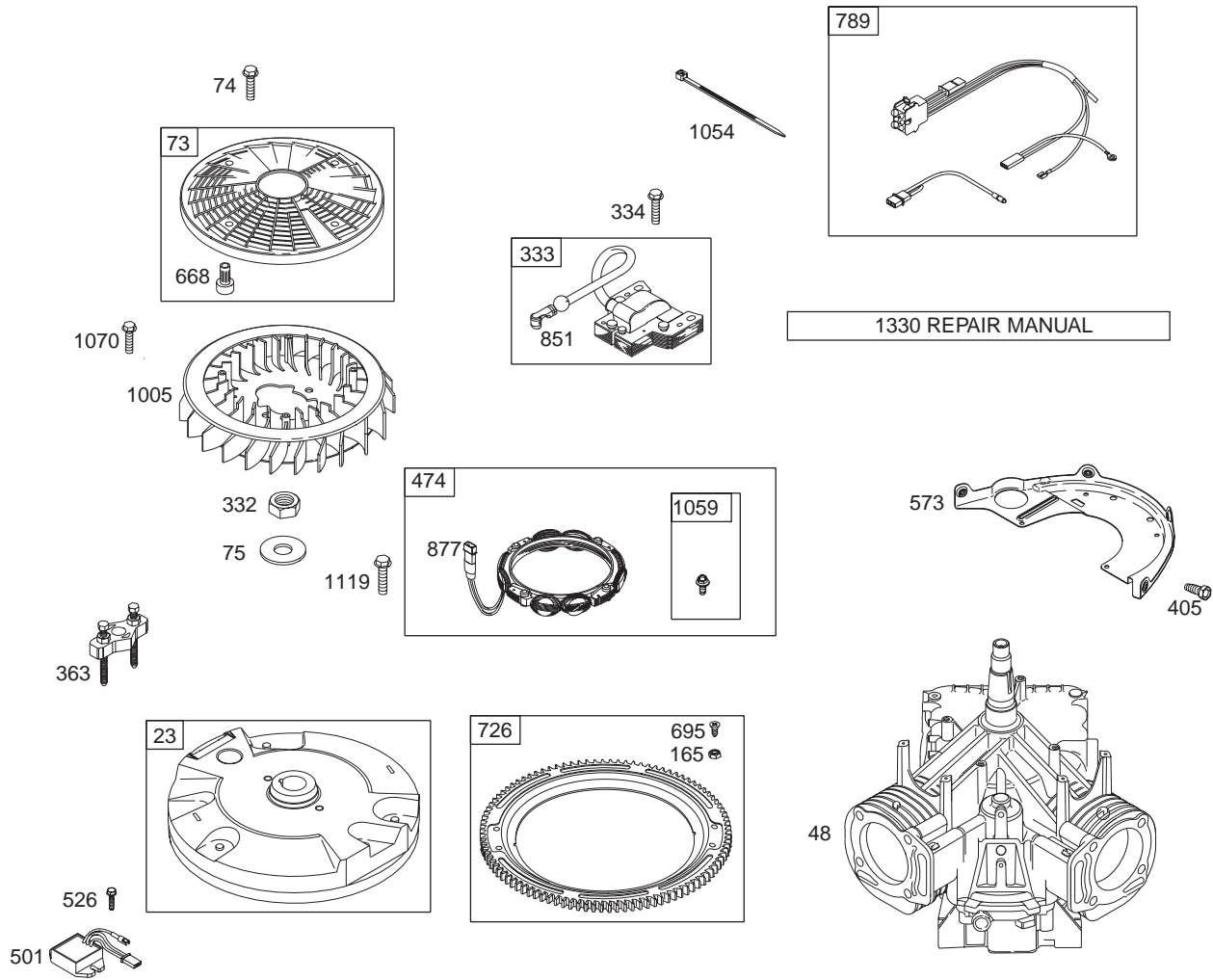
1058 OWNER'S MANUAL
1036 EMISSION LABEL

1036 EMISSION LABEL

ENGINE (LT1024)



ENGINE (LT1024)



- Included in Engine Gasket Set, Key. No. 358
- Ø Included in Carburetor Overhaul Kit, Key. No. 121
- ‡ Included in Carburetor Gasket Set, Key. No. 977
- + Included in Valve Gasket Set, Key. No. 1095

ENGINE (LT1024)

REF. NO.	PART NUMBER	DESCRIPTION	REF. NO.	PART NUMBER	DESCRIPTION
1	699753	Cylinder Assembly	121	699734	Kit-Carburetor Overhaul
2	499585	Kit-Bushing/Seal (Magneto Side)	125	699709	Carburetor
3	391086•	Seal-Oil (Magneto Side)	130	690993	Valve-Throttle
4	699747	Sump-Engine	131	499805	Kit-Throttle Shaft
5	697580	Head-Cylinder (Cylinder 1)	133	699724	Float-Carburetor
5A	697581	Head-Cylinder (Cylinder 2)	135	699729	Tube-Fuel Transfer
7	693997•+	Gasket-Cylinder Head	137	690994Ø‡	Gasket-Float Bowl
8	499601	Breather Assembly	141	699722	Kit-Choke Shaft
9	690937•	Gasket-Breather	142	699726Ø	Nozzle-Carburetor
10	690960	Screw (Breather Assembly)	146	690979	Key-Timing
11	690942	Tube-Breather	150	690995Ø‡	Gasket-Nozzle
12	697227•	Gasket-Crankcase	160	699727	Retainer-Solenoid
13	690360	Screw (Cylinder Head)	163	691001•+	Gasket-Air Cleaner
15	690946	Plug-Oil Drain	165	693148	Nut (Ring Gear)
16	691046	Crankshaft	187	691050	Line-Fuel
20	690947•	Seal-Oil (PTO Side)	187A	691049	Line-Fuel (Molded)
22	694966	Screw (Engine Sump)	188	690960	Screw (Control Bracket)
23	691053	Flywheel	192	690083	Adjuster-Rocker Arm
24	222698	Key-Flywheel	209	697674	Spring-Governor
25	697679	Piston Assembly (Standard)	211	691019	Spring-Governed Idle
25	697681	Piston Assembly(.020")	212	695238	Link-Throttle
26	697683	Ring Set-Piston (Standard)	213	691021	Bracket-Choke Control
26	697685	Ring Set-Piston (.020")	216	691022	Link-Choke
27	690975	Lock-Piston Pin	219	698231	Gear-Governor
28	690229	Pin-Piston	220	690412	Washer (Governor Lever)
29	499583	Rod-Connecting	222	698761	Bracket-Control
32	690976	Screw (Connecting Rod)	227	691048	Lever-Governor Control
33	697576	Valve-Exhaust	231	690718	Screw (Choke Valve)
34	499597	Valve-Intake	239	491657	Switch-Oil Pressure
35	690963	Spring-Valve (Intake)	240	695666	Filter-Fuel
36	690963	Spring-Valve (Exhaust)	250	690957	Retainer-Breather
42	499586	Keeper-Valve	252	690956	Collector-Oil
45	690977	Tappet-Valve	276	690997•Ø+	Washer-Sealing
46	699748	Camshaft	287	690960	Screw (Dipstick Tube)
48	698172	Short Block	304	695277	Housing-Blower
50	695241	Manifold-Intake	305	691005	Screw (Blower Housing)
51	690950• Ø‡	Gasket-Intake	309	691262	Motor-Starter
53	690951	Stud (Carburetor)	310	691263	Bolt (Starter Motor)
54	695240	Screw (Intake Manifold)	311	497608	Brush Set
73	691055	Screen-Rotating	332	691059	Nut (Flywheel)
74	698425	Screw (Rotating Screen)	333	691060	Armature-Magneto
75	691056	Washer (Flywheel)	334	691061	Screw (Magneto Armature)
89	690283	Plug-Oil	337	491055	Plug-Spark
95	690718	Screw (Throttle Valve)	358	694012	Set-Engine Gasket
98	699721	Kit-Idle Speed	363	691062	Flywheel Puller
104	694918Ø	Pin-Float Hinge	383	690966	Wrench-Spark Plug
105	698537Ø	Valve-Float Needle	385	690960	Screw (Fuel Pump)
108	699723	Valve-Choke	387	808656	Pump-Fuel
117	699494	Jet-Main (Standard)	404	690442	Washer (Governor Crank)
117A	699495	Jet-Main (Standard)	405	697820	Screw (Back Plate)

ENGINE (LT1024)

REF. NO.	PART NUMBER	DESCRIPTION	REF. NO.	PART NUMBER	DESCRIPTION
418	690999	Plate-Carburetor	847	499602	Dipstick/Tube Assembly
445	698754	Filter-Air Cleaner Cartridge	851	493880	Terminal-Sparkplug
447	691003	Screw (Air Guide Cover)	855	691011	Adapter-Air
447A	690960	Screw (Air Guide Cover)	865	691012	Cover-Air Guide
467	691008	Knob, Air Cleaner	865A	691014	Cover-Air Guide
474	696458	Alternator	865B	691015	Cover-Air Guide
501	691185	Regulator	868	690968•+	Seal-Valve
505	691029	Nut (Governor Control Lever)	877	399916	Wire/Connector- Alternator
510	497606	Drive-Starter	914	691127	Screw (Rocker Cover)
513	692024	Clutch-Drive	918	694000	Hose-Vacuum
523	691036	Dipstick	929	695239	Screw (Choke Control Bracket)
524	691032	Seal-Dipstick Tube	943	690589•	Seal-O Ring (Oil Pump Cover)
525	691037	Tube-Dipstick	947	699728	Solenoid-Fuel
526	690960	Screw (Regulator)	965	499613	Cover-Oil Pump
544		Armature-Starter (Service with 691262 Starter Motor)	967	273638	Filter-Pre Cleaner
			968	499788	Cover-Air Cleaner
552	690552	Bushing-Governor Crank	975	499810	Bowl-Float
552A	690553	Bushing-Governor Crank	977	699735	Gasket Set-Carburetor
562	690311	Bolt (Governor Control Lever)	987	691000Ø‡	Seal-Throttle Shaft
573	691009	Plate-Back	1005	499603	Fan-Flywheel
601	691038	Clamp-Hose	1013	690954	Nipple-Oil Filter
615	698290	Retainer-Governor Shaft	1017	690770	Screen-Oil Pump
616	691045	Crank-Governor	1019	690103	Kit-Label
628	690960	Screw (Fuel Pump Bracket)	1022	690971	Gasket-Rocker Cover
633	690998Ø‡	Seal-Choke/Throttle Shaft	1023	499599	Cover-Rocker (Cylinder 1)
635	66538	Boot-Spark Plug	1023A	499600	Cover-Rocker (Cylinder 2)
654	690958	Nut (Carburetor)	1024	499054	Pump-Oil
668	691215	Spacer	1026	690981	Rod-Push (Steel)
672	690234Ø‡	Gasket-Carburetor Plate	1026	690982	Rod-Push (Aluminum)
691	690657•	Seal-Governor Shaft	1027	696854	Filter-Oil
695	693149	Screw (Ring Gear)	1029	690972	Arm-Rocker
697	690372	Screw (Drive Cap)	1035	691042	Shaft-Pump
703	691010	Clip	1036	695704	Label-Emission
718	690959	Pin-Locating	1051	691265	Ring-Retaining
726	499612	Gear-Ring	1054	280275	Cable-Tie
729	694123	Clip-Wire	1058	275475	Owner's Manual
741	690980	Gear-Timing	1059	698516	Kit-Screw/Washer
742	690328	Retainer-E Ring	1070	691058	Screw (Flywheel Fan)
750	696999	Screw (Oil Pump Cover)	1090	691293	Retainer-Brush
783	693058	Gear-Pinion	1095	699735	Gasket Set-Valve
788	691039	Bracket-Fuel Pump	1100	690973	Pivot-Rocker Arm
789	698330	Harness-Wiring	1119	691183	Screw (Alternator)
797	691029	Nut (Brush Retainer)	1123	699725Ø ‡	Seal-O Ring (Solenoid Retainer)
797A	693167	Nut (Brush Retainer)	1124	690988Ø ‡	Seal-O Ring (Fuel Transfer Tube)
798	690967	Screw (Rocker Arm)			
801	691283	Cap-Drive	1126	690991	Screw (Fuel Transfer Tube)
802	691286	Cap-End	1127	690992	Screw (Float Bowl)
803		Housing-Starter (Service with 691262 Starter Motor)	1128	690990Ø	Screw (Carburetor Nozzle)
			1330	273521	Repair Manual
842	691031•	Seal-Dipstick/Tube	1342	699731	Expansion-Fuel Transfer Tube

CUB CADET LLC, P.O. BOX 361131 CLEVELAND, OHIO 44136-0019