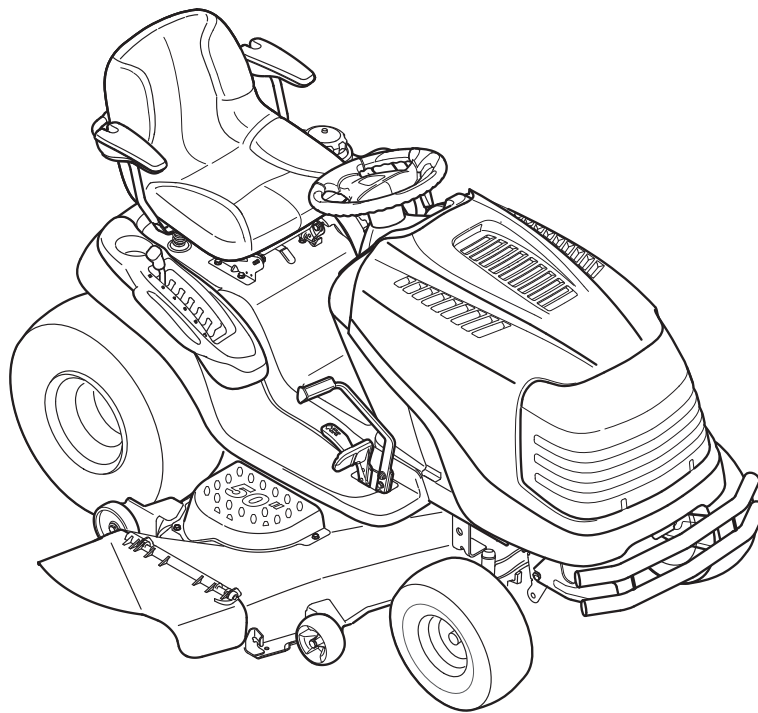

Cub Cadet.

ILLUSTRATED PARTS MANUAL



Hydrostatic Garden Tractor — Model GT1554

CUB CADET LLC, P.O. BOX 361131 CLEVELAND, OHIO 44136-0019

SERIES GT1554 HYDROSTATIC GARDEN TRACTOR

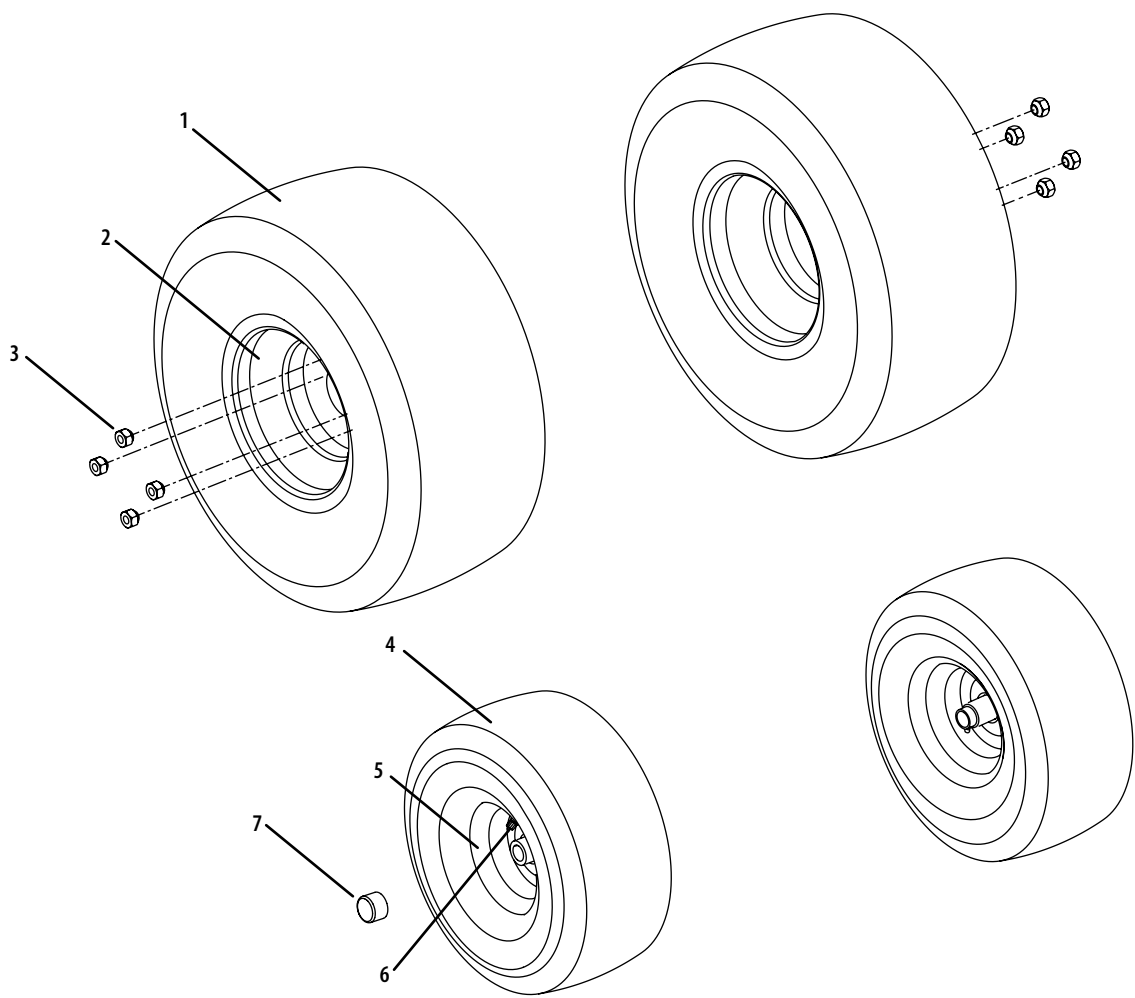
TABLE OF CONTENTS

DESCRIPTION	PAGE	DESCRIPTION	PAGE
Axle, Front	12	Briggs & Stratton 44M777-721-B1	
Battery	6	Illustrated Parts	29
Deck, 54-inch	20	Parts Table	36
Dash Panel	6		
Drive System	10		
Electrical Schematic	22		
Engine Accessories	16		
Fender	8		
Frame & Electric PTO	14		
Fuel Tank	8		
Hood & Grille	4		
Lift Linkage	23		
Label Map	39		
Pedal Assembly	19		
PTO	14		
Seat	18		
Steering	12		
Transmission, Hydrostatic	24		
Wheels, Front & Rear	3		

NOTE: For painted parts, please refer to the list of color codes below. Please add the applicable color code, wherever needed, to the part number to order a replacement part. For instance, if a part, numbered 700-xxxx, is painted Cub Yellow, the part number to order would be 700-xxxx-0716.

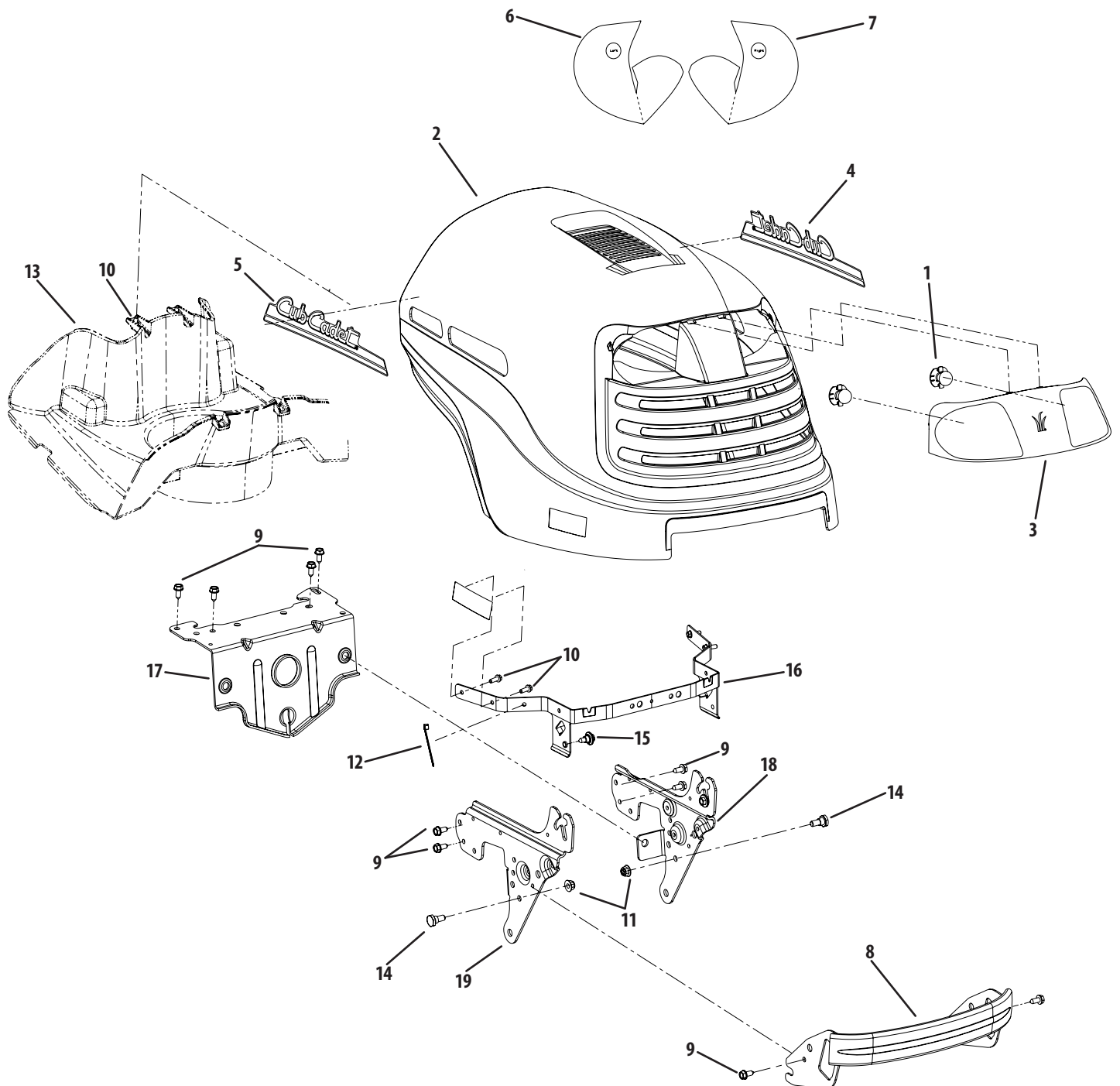
Cub Yellow: 4021
Cub Beige: 0499
Powder Black: 0637

Wheel Assembly



Ref.	Part Number	Description
1	734-04147-0901	Tire, 23 x 10.5 x 12 Square Shoulder
2	634-04238-0499	Rim Assembly, 12.0 x 7.0 (4-Lug)
	934-0255	Valve, Tubeless Air (not shown)
3	712-3050	Lug Nut, 7/16-14
4	734-04148-0901	Tire, 16 x 7.5 x 8 Square Shoulder
5	934-04082-0499	Rim Assembly, 8 x 5.38 (Includes Flange Bearings and Valve)
	741-0990B	Bearing, Flange .760 ID w/ Grease Ftg.
	741-0516B	Bearing, Flange .760 x 1.00 x 1.20 Lg.
6	934-0255	Valve, Tubeless Air
7	731-05674	Hub Cap

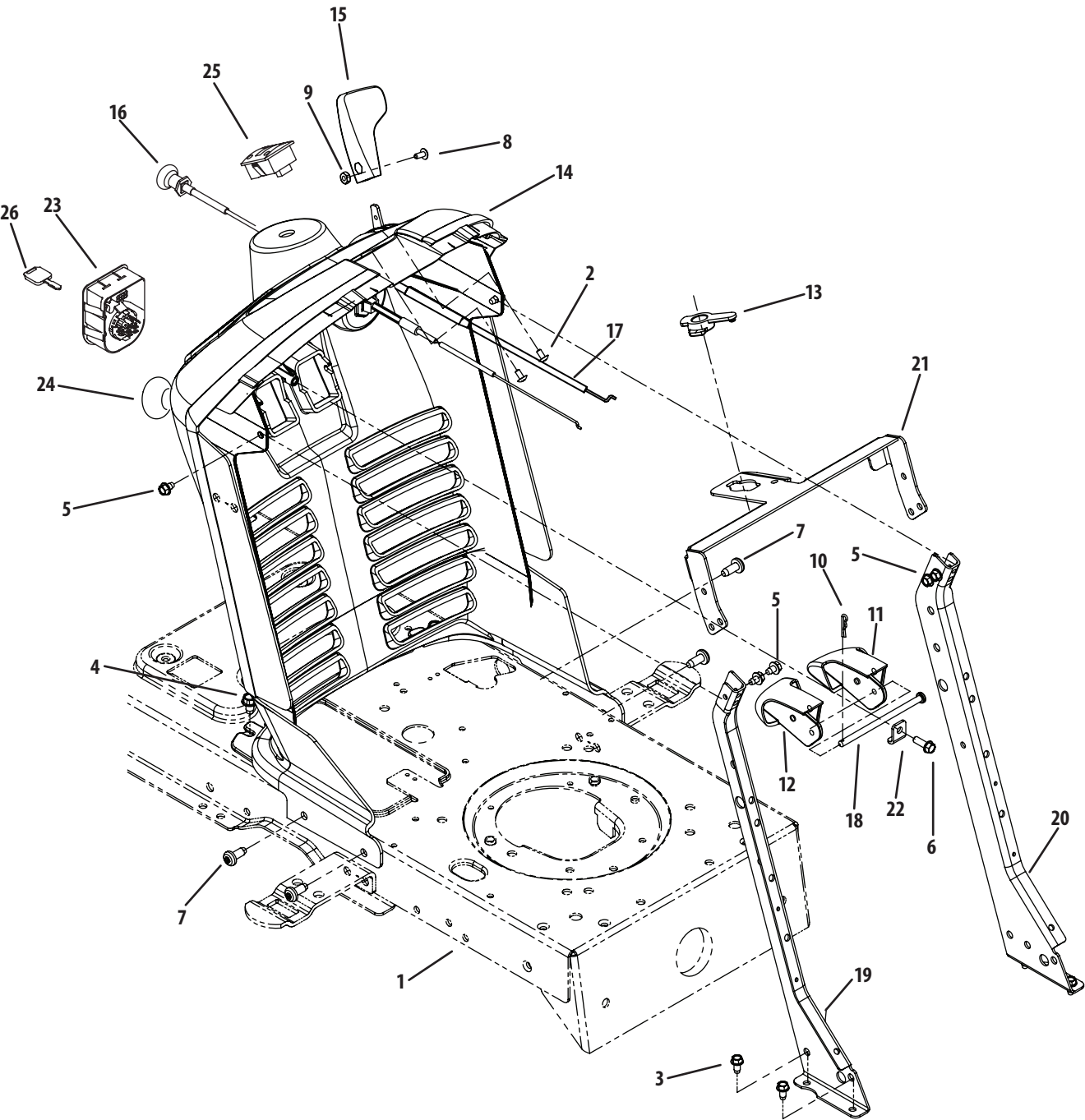
Hood & Grille



Hood & Grille

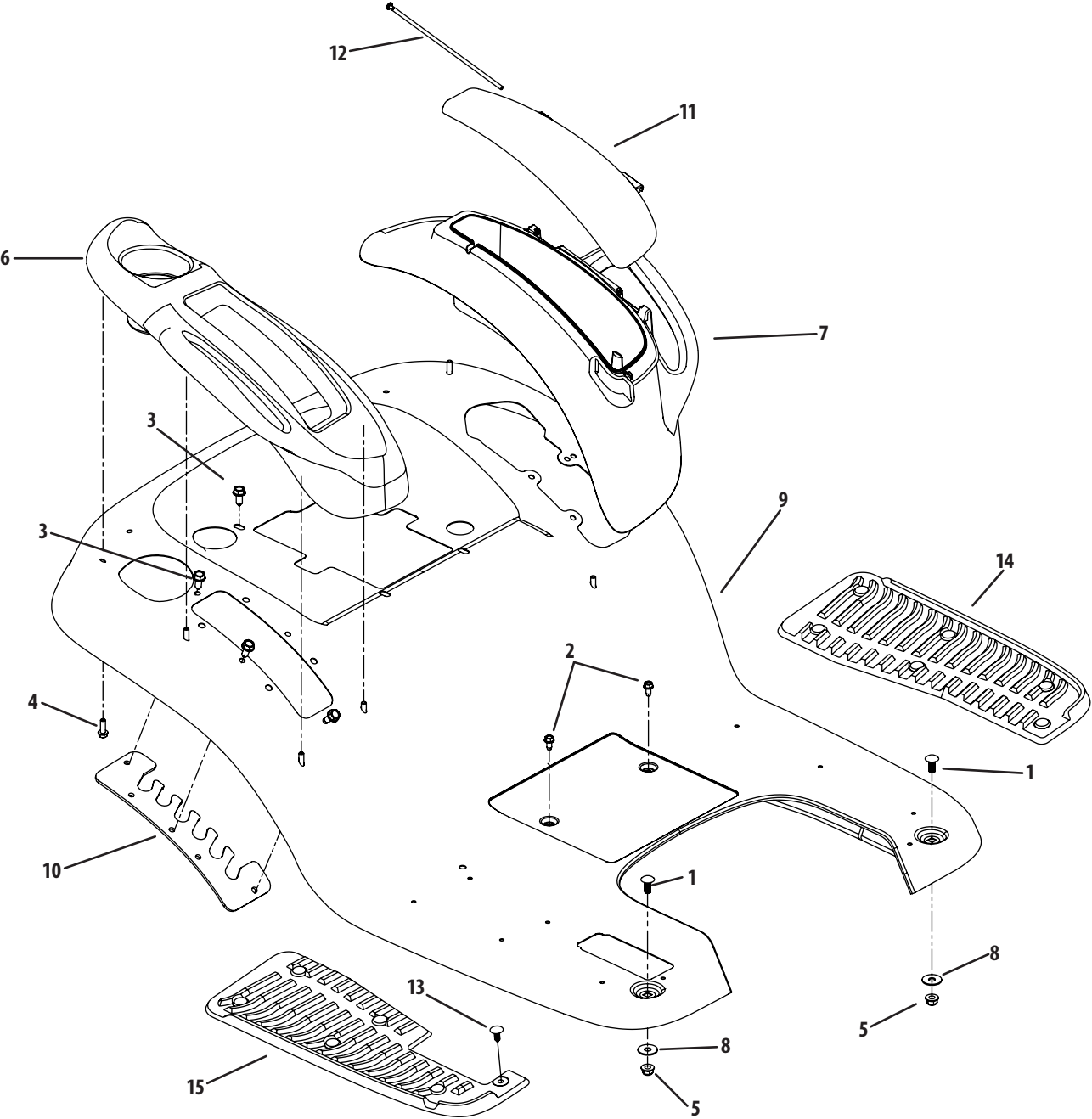
Ref.	Part Number	Description
1	N/A	Socket Assembly
—	925-0963	Miniature Lamp, 12V
—	925-1649	Lamp Socket
2	931-04567A	Hood Cub 1000
3	931-04577	Lens, Cub 1000 Headlight
4	777D09701	Label LH, Cub 1000 Heat
5	777D09702	Label RH, Cub 1000 Heat
6	777X41562	Label, Cub 1000 Right Lens
7	777X41563	Label, Cub 1000 Left Lens
8	683-04238-0637	Bumper Assembly
9	710-04484	Screw, Hex Washer, 5/16-18 x .750
10	710-0895	Screw, Hex Washer, 1/4-15 x .750
11	712-04065	Nut, Flange Lock, 3/8-16
12	725-0157	Tie, Cable
13	731-04569A	Plenum, Hood
14	738-0143	Bolt, Shoulder, 3/8-16 x .496 x .336
15	738-04091A	Screw, Shoulder, 5/16-18 x .43 x .29
16	783-04606C-0637	Bracket, Hood Pivot
17	783-05326-0637	Bracket, Pivot Bar
18	783-05417-0637	Bracket, Pivot Support LH
19	783-05418-0637	Bracket, Pivot Support RH

Dash Assembly



Dash Assembly

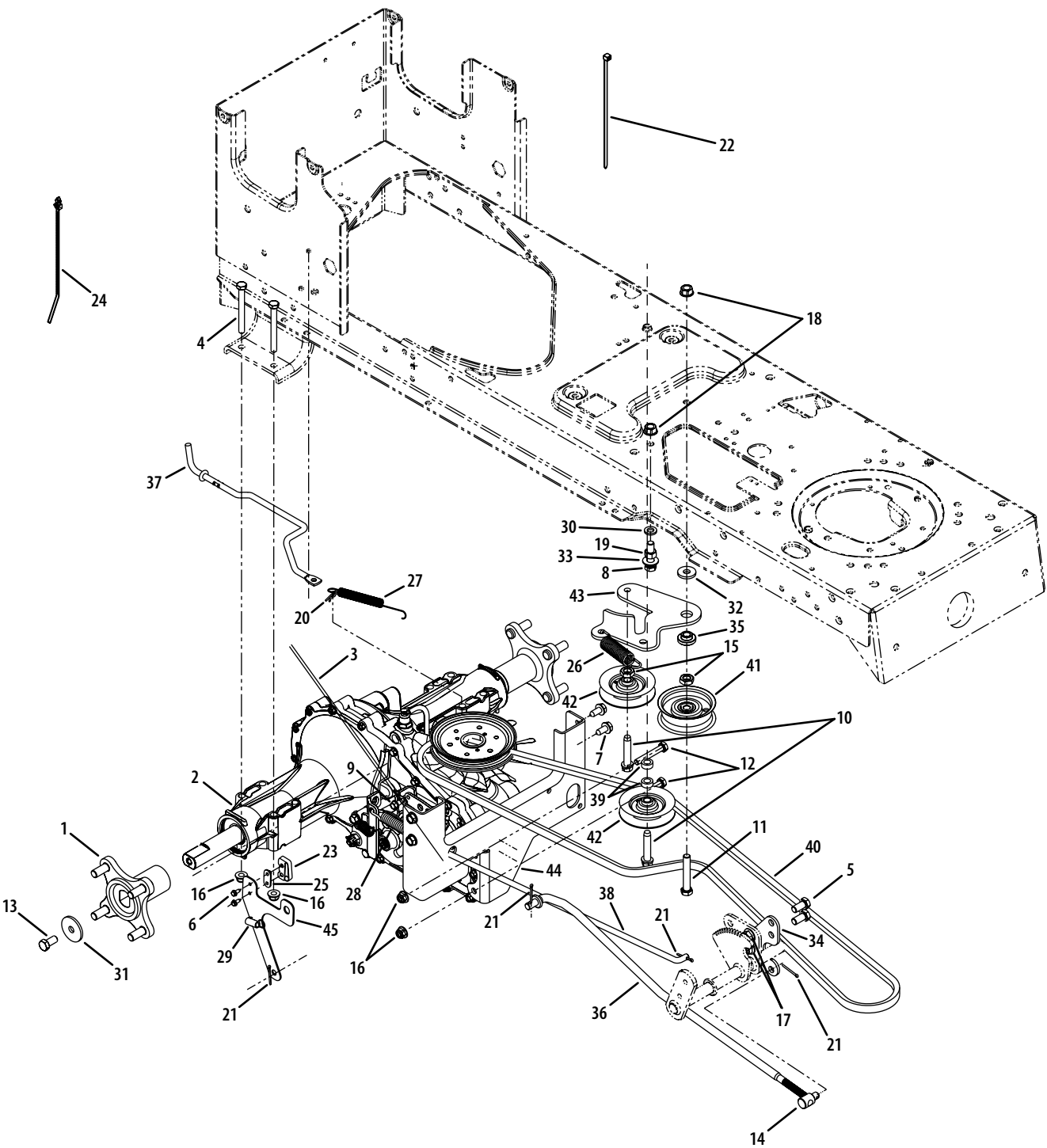
Ref.	Part Number	Description
1	683-04099-0637	Frame Assembly, Lower
2	710-0192	Screw, Machine, #10-24 x .375
3	710-0599	Screw, Hex Washer, 1/4-20 x .500
4	710-0607	Screw, Hex Washer, 5/16-18 x .500
5	710-0653	Screw, Hex Washer, 1/4-20 x .375
6	710-0895	Screw, Hex Washer, 1/4-15 x .750
7	710-1611B	Screw, 5/16-18 x .750
8	710-3217	Screw, Machine, #8-32 x .375
9	712-0142	Nut, Hex, #8-32
10	914-0104	Pin, Cotter, .072 x 1.13
11	731-04293A	Lever, Brake
12	731-04294A	Lever, Cruise
13	731-05659	Bushing, Shift
14	931-06553	Dash, Cub
15	931-3161A	Knob, Throttle
16	746-0616A	Choke Control
17	746-1087	Cable, Throttle
18	747-1323A	Rod, .250 x 4.55
19	783-04285F-0637	Support, Dash, RH
20	783-04323F-0637	Support, Dash, LH
21	783-05453A-0637	Bracket, Dash Support
22	783-1499-0637	Bracket
23	925-04227B	Switch, Key Module
24	725-04258	Switch, PTO
25	925-04022B	Meter, Hour Indicator
26	925-1745A	Key
NS	751-0658E	Tank, Fuel
NS	751-0603A	Cap, Fuel
NS	710-04484	Screw, Hex Washer, 5/16-18 x .750



Fender

Ref.	Part Number	Description
1	710-0451	Bolt, Carriage, 5/16-18 x .750
2	710-0599	Screw, Hex Washer, 1/4-20 x .500
3	710-04484	Screw, Hex Washer, 5/16-18 x .750
4	710-0895	Screw, Hex Washer, 1/4-15 x .750
5	712-04063	Nut, Flange Lock, 5/16-18
6	731-06700	Cover, Fender RH
7	731-06676	Cover, Fender LH
8	736-3078	Washer, Flat, .344 x 1.0 x .063
9	783-06250-4021	Fender, A-Style
10	783-0677B-0637	Bracket, Lift Adjust
11	731-06584	Door, Fender Cover
12	747-05039	Pin, Pod Door
13	726-3046	Clip, Ratchet
14	735-0697A	Pad, Foot LH
15	735-0698B	Pad, Foot RH

Drive System

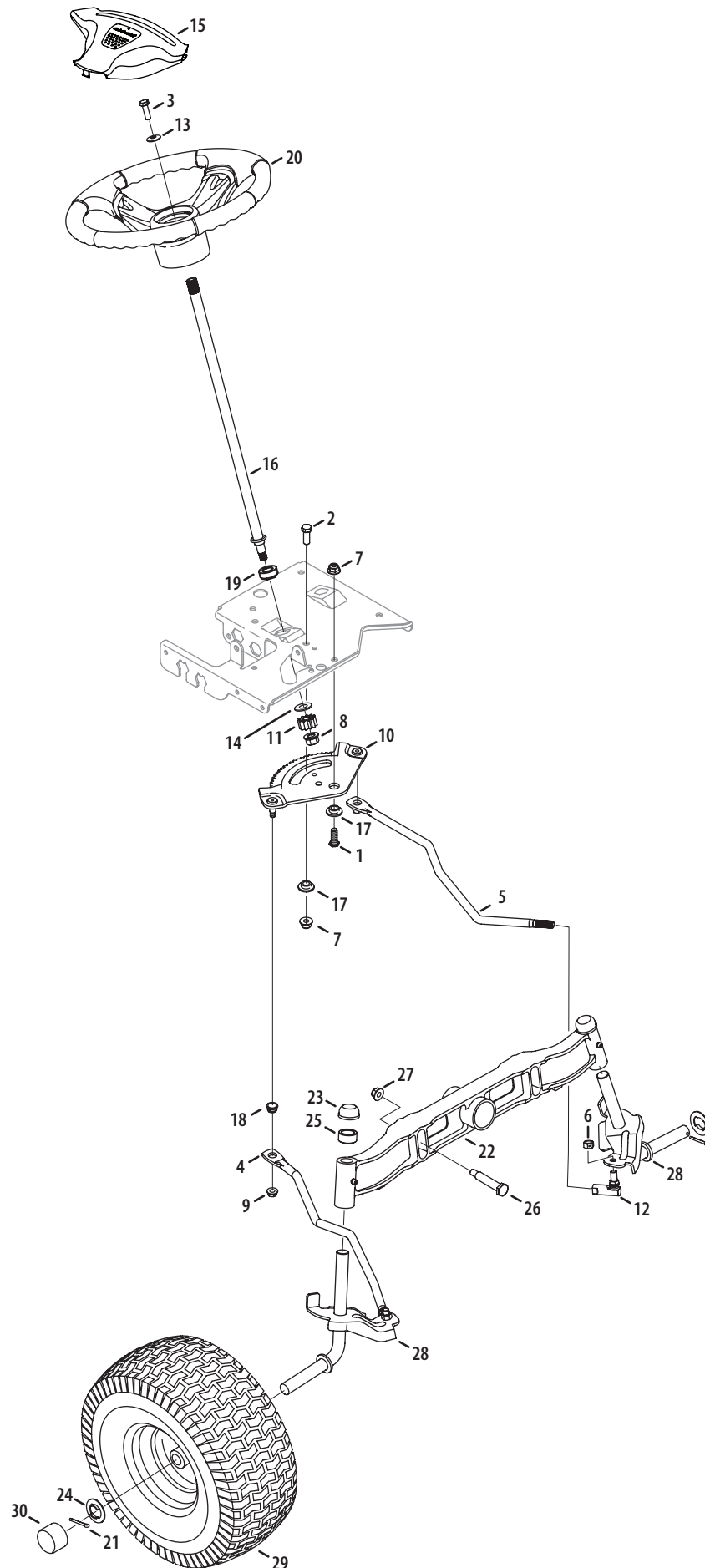


Drive System

Ref.	Part Number	Description
1	918-04317	Hub Assembly
2	918-04468	Transmission, Hydrostatic
3	629-0949B	Wire Harness, Reverse
4	710-0189	Screw, Hex Cap, 5/16-18 x 3.00 Gr5
5	710-0216	Screw, Hex Cap, 3/8-16 x .75 Gr5
6	710-0227	Screw, Hex Wash Hd Tapp, #8-18 x .5
7	710-04484	Screw, Hex Cap, 5/16-18 x .750
8	710-0520	Screw, Hex Cap, 3/8-16 x 1.50 Gr5
9	710-0599	Screw, Self-Tapp, 1/4-20 x .5
10	710-1008	Sems Screw, 3/8-16 x 1.875
11	710-3011	Hex Cap Screw, 3/8-16 x 2.25, Gr5
12	710-3103	Screw, Hex Cap, 5/16-18 x 2.00
13	710-3119	Screw, Hex Cap Lock, 3/8-16 x .75
14	911-0832	Ferrule, 3/8-24 x .375 Dia
15	912-0240	Jam Nut, 7/16-20
16	712-04063	Nut, Flange Insert Lock, 5/16-18 Gr5
17	712-04065	Nut, Flange Insert Lock, 3/8-16 GrF
18	912-0431	Nut, Flange Insert Lock, 3/8-16 GrF
19	912-3017	Nut, Hex, 3/8-16, GR5
20	914-0104	Pin, Cotter, .072 Dia. x 1.13
21	914-0111	Pin, Cotter, 3/32, 1.0
22	725-0157	Cable, Tie, 3/16 x .05 x 7.4
23	725-1644	Switch, Spring, Short

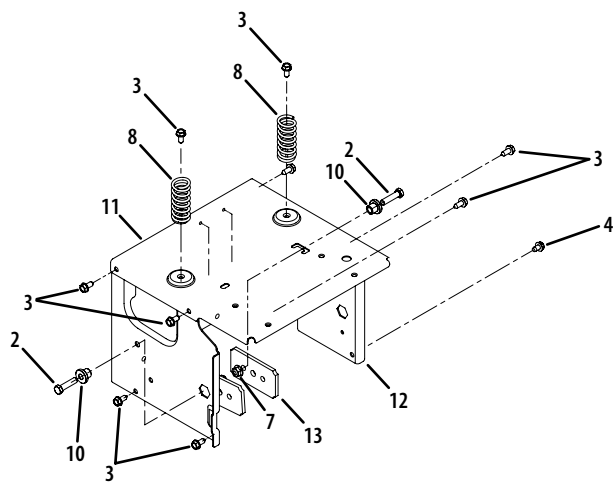
Ref.	Part Number	Description
24	926-0154	Tie, Cable, Push Mount 7.5
25	926-0320	Plate, Insulator Nut
26	732-04323B	Spring, Extension, .77 Dia x 3.7 Lg
27	732-04528	Spring, Extension, .50 OD x 5.00 Lg
28	732-0716D	Spring, Extension, .59 OD x 4.00 Lg
29	732-3118	Spring, Extension, 3/8 OD x 1.44 Lg
30	936-0169	Washer, Lock, 3/8 , Regular Duty
31	936-0227	Washer, Flat, .390 x 1.50 x .134
32	736-0258	Washer, Flat, .385 x 1.0 x .135
33	936-0300	Washer, Flat, .406 x .875 x .059
34	783-0745-0637	Bracket, Speed Control
35	738-0372B	Spacer, Shoulder, 1.00 x .38 x .38
36	747-04666	Rod, Hydro Control
37	747-04838A	Rod, Hydro Disengage
38	747-04873	Rod, Brake
39	750-04776	Spacer, .380 x .625 x .265
40	954-0461	Belt, V-Type
41	756-04224	Pulley, Idler, Flat 2.75 OD
42	756-04325	Pulley, Idler, Flat 3.06 OD
43	783-04442-0637	Bracket, Idler
44	783-05443-0637	Bracket, Torque
45	783-05841	Bracket, Actuator

Steering

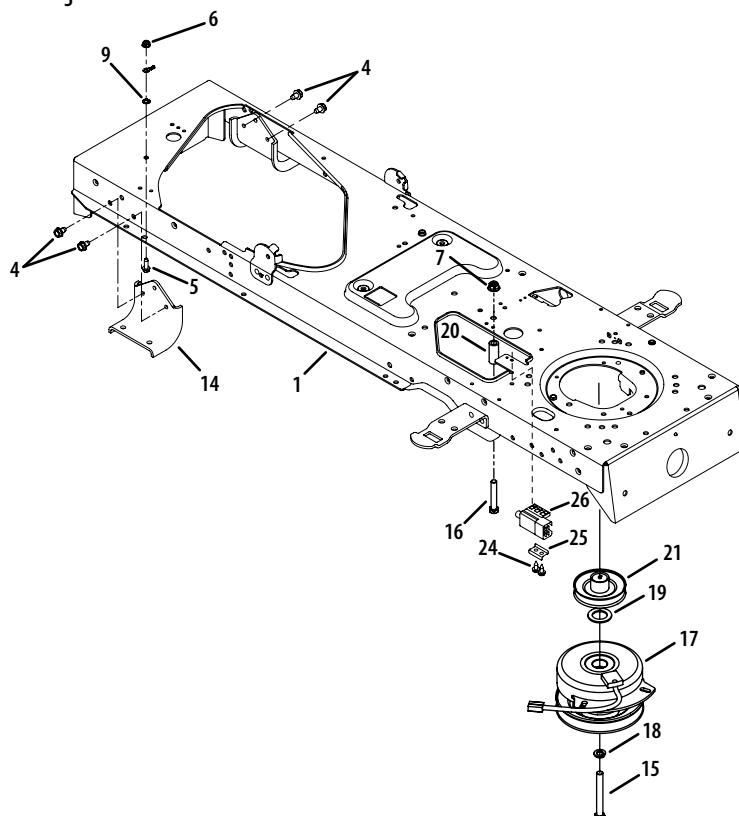
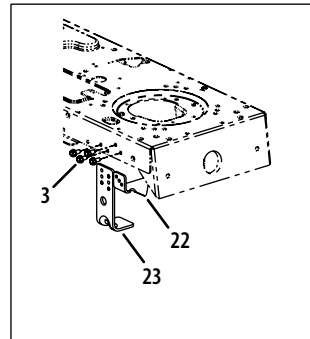


Ref.	Part Number	Description
1	710-04095	Hex Cap Screw, 3/8-16, 1.00
2	710-0514	Hex Cap Screw, 3/8-16, 1.00, Gr5, Std
3	710-0650	Self-tapping Screw, 5/16-18 x .75
4	711-1408	Link, Drag, RH
5	711-1409A	Link, Drag, LH
6	912-0214	Nut, Hex, 3/8-24, Gr5
7	712-04065	Nut, Nylon Lock, 3/8-16
8	712-0459	Nut, Flange Lock, 7/16-20
9	712-3004A	Nut, Flange Lock, 5/16-18
10	717-1550F	Gear, Steering, 11/90 Ratio
11	717-1554	Gear, Pinion, Steering
12	923-0448A	Ball Joint, 7/16-20
13	936-3004	Washer, Flat, .406 x .875 x .105
14	736-3084	Washer, Flat, .510 x 1.120 x .060
15	731-04532B	Cover, Steering Wheel
16	738-04262	Shaft, Steering, .625 OD x 25.00 Lg
17	738-04154	Spacer, Shoulder, 1.00 x .38 x .38
18	941-0475	Bushing, Plastic, .380 ID
19	741-04237A	Bearing, Hex Flange, 5/8
20	631-04008A	Wheel, Steering, Three Spoke
21	714-0162	Pin, Cotter, 5/32, 1.25
22	719-04177A	Axle, Pivot Bar, Cast
23	726-0341	Push Cap, .75
24	736-04228A	Washer, Flat, .781 x 1.590
25	748-04068	Spacer, .71 x .125 x .56
26	738-04128	Bolt, Shoulder, 3/8-16 x .500 x 2.38
27	712-04065	Nut, Jam, 3/8-16, Grf.
28	638-04003AP	Axle Ass'y, LH .750 Dia.
	938-04004A	Axle Ass'y, RH .750 Dia.
29	634-04088A	Wheel Assembly <i>(See page 3 for breakdown)</i>
30	731-05674	Hub Cap

Frame & Electric PTO Clutch



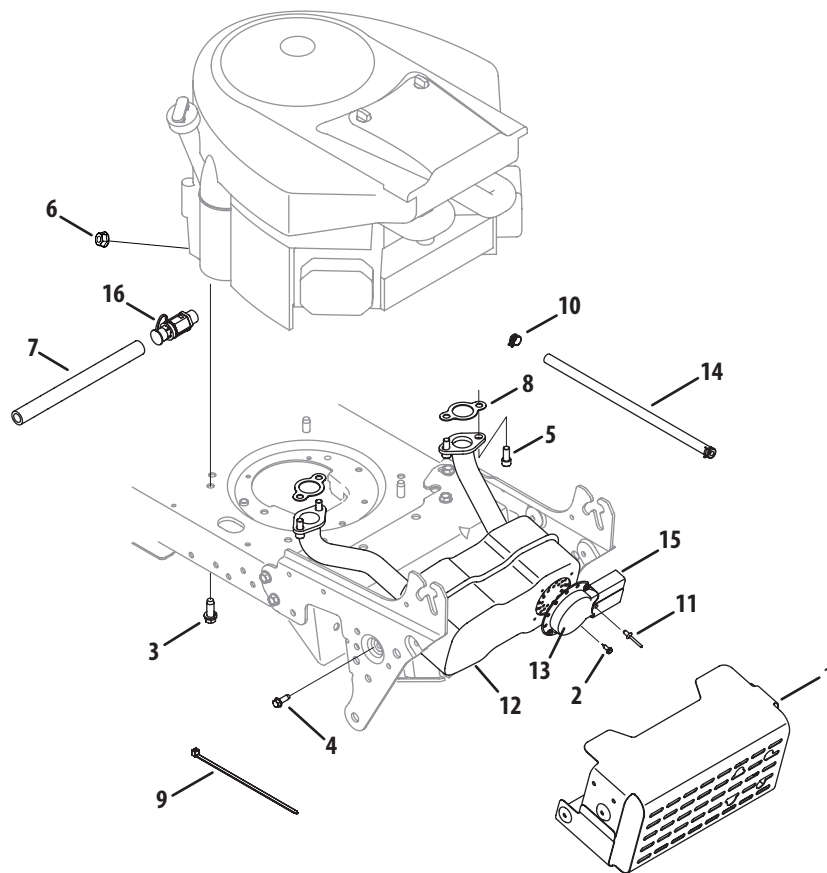
Deck Up-Stop & Clutch Bracket



Frame & Electric PTO Clutch

Ref.	Part Number	Description
1	683-04173B-0637	Frame Assembly, Lower
2	710-0520	Hex Screw 3/8-16 x 1.25
3	710-04484	Screw, Self-tapping, 5/16-18, 0.75
4	710-0607	Screw, Hex Wash. Tapp, 5/16-18 x .5
5	710-0642	Screw, Hex Wash., 1/4-20 x 0.750
6	712-04064	Nut, Nylon Lock, 1/4-20
7	712-04065	Nut, Nylon Lock, 3/8-16
8	732-04561	Spring, Compression, 1.71 x .3735 x 2.38
9	936-0222	Washer, Lock, Ext. 1/4
10	738-04058	Shoulder Spacer
11	783-06089-0637	Bracket, Frame, Seat
12	783-04811C-0637	Frame, Upper
13	783-05005-0637	Support Plate
14	783-0693-0637	Axle Bracket
15	710-04379A	Screw, Hex Cap , 7/16-20 x 3.5 GR5
16	710-3011	Screw, 3/8-16 x 2.25 GR5
17	917-1774C	Clutch, PTO
18	936-0171	Washer, Lock, 7/16, Regular Duty
19	736-0277	Washer, Flat, 1.031 x 1.62 x .095
20	748-0415B	Spacer, 3/8 x 1.54
21	756-0978B	Electric PTO Engine Pulley
22	783-04419B-0637	Clutch Bracket
23	783-04467-0637	Deck Up-stop Bracket
24	910-0224	Screw, #10 - 16, x .500
25	17962	Switch Mounting Plate
26	925-04039	Interlock Switch

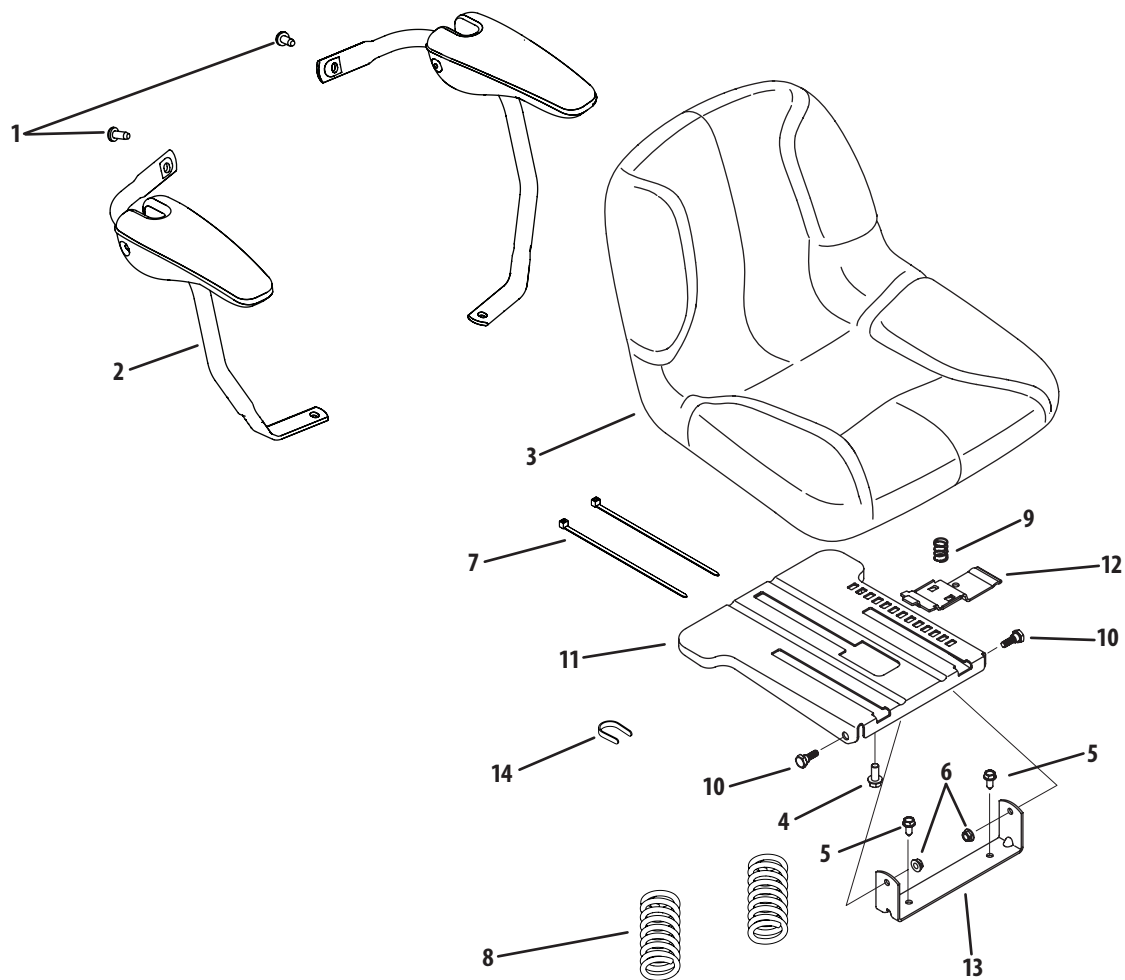
Engine Accessories



Engine Accessories

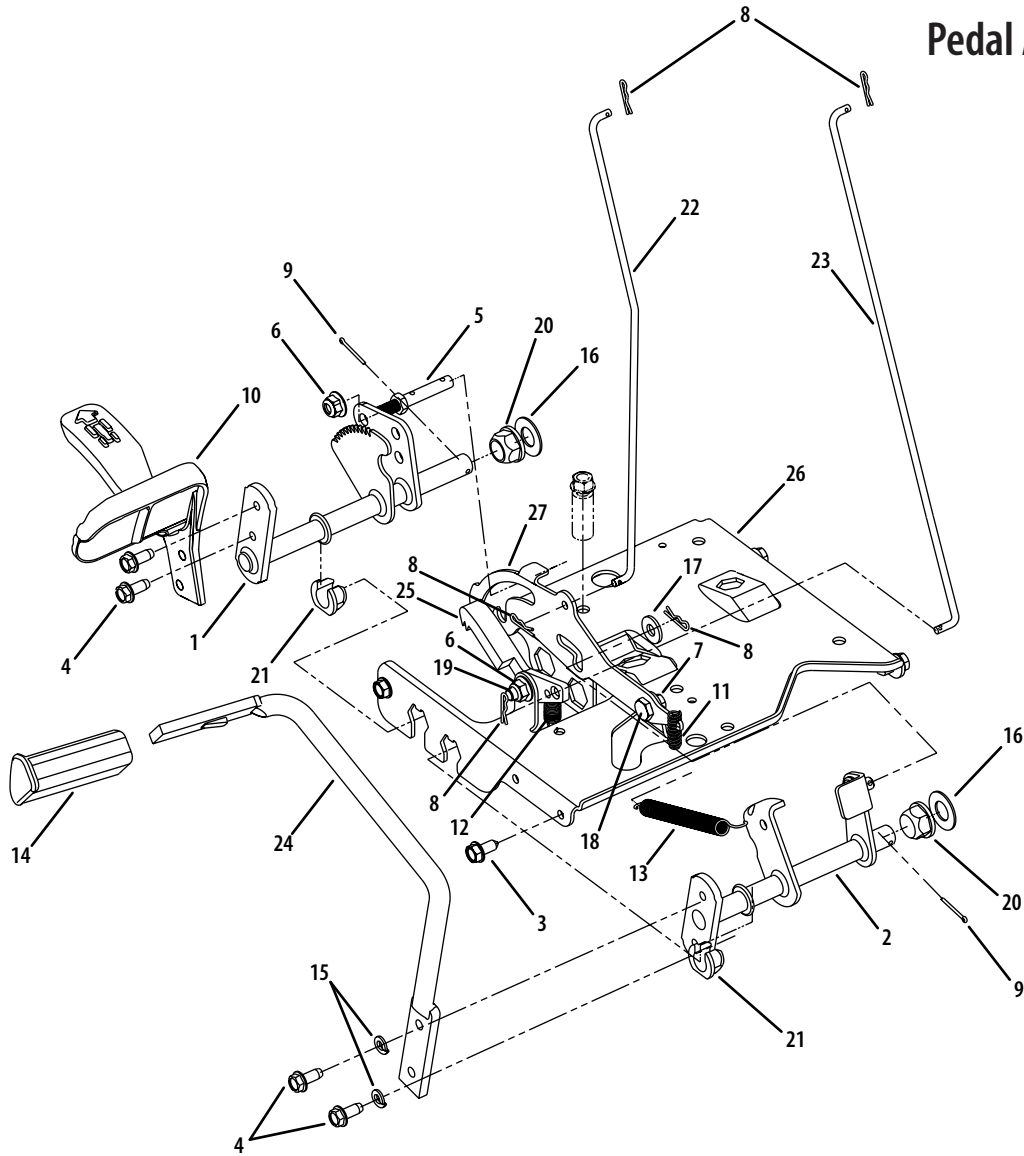
Ref.	Part Number	Description
1	683-04549-0637	Muffler Assembly Shield
2	710-0227	AB Screw #8-18 x 0.5
3	710-04683	TT Screw 3/8-16 x 1.00
4	710-0642	TT Screw 1/4-20 x 0.750
5	710-1314A	Screw, 5/16-18 x .750
6	712-0271	Sems Nut, 1/4-20
7	751-3141-14	Oil Drain Extension Hose
8	721-0460	Exhaust Gasket
9	725-0157	Cable Tie
10	726-0205	Hose Clamp
11	728-04000	Pop Rivets, .188 x .300
12	751-10542	Twin Inlet Muffler
13	751-0564B	Muffler Deflector
14	751-10349-28	Fuel Line Hose
15	751-10353	Long Muffler Deflector
16	951-10517A	Oil Drain Valve

Seat



Ref.	Part Number	Description
1	710-0262	Screw, 5/16-18 x .750
2	757-04073	Seat Arm
3	757-04092	Seat
4	710-04482	Screw, Hex Flange, 3/8-16 x .875
5	710-04484	Screw, Hex Washer, 5/16-18 x .750
6	712-3004A	Nut, Flange Lock, 5/16-18
7	725-0157	Tie, Cable
8	732-04561	Spring, Comp., 1.71 x 3.735 x .238
9	732-04563	Spring, Comp., .68 x 1.065 x .055
10	938-0296	Screw, Shldr., 5/16-18 x .437 x .268
11	783-06049-4021	Bracket, Seat Moun
12	783-06050	Lever, Seat Adjust
13	783-06088-4021	Bracket, Seat Pivot
14	783-06448	Clip, Ret. Switch

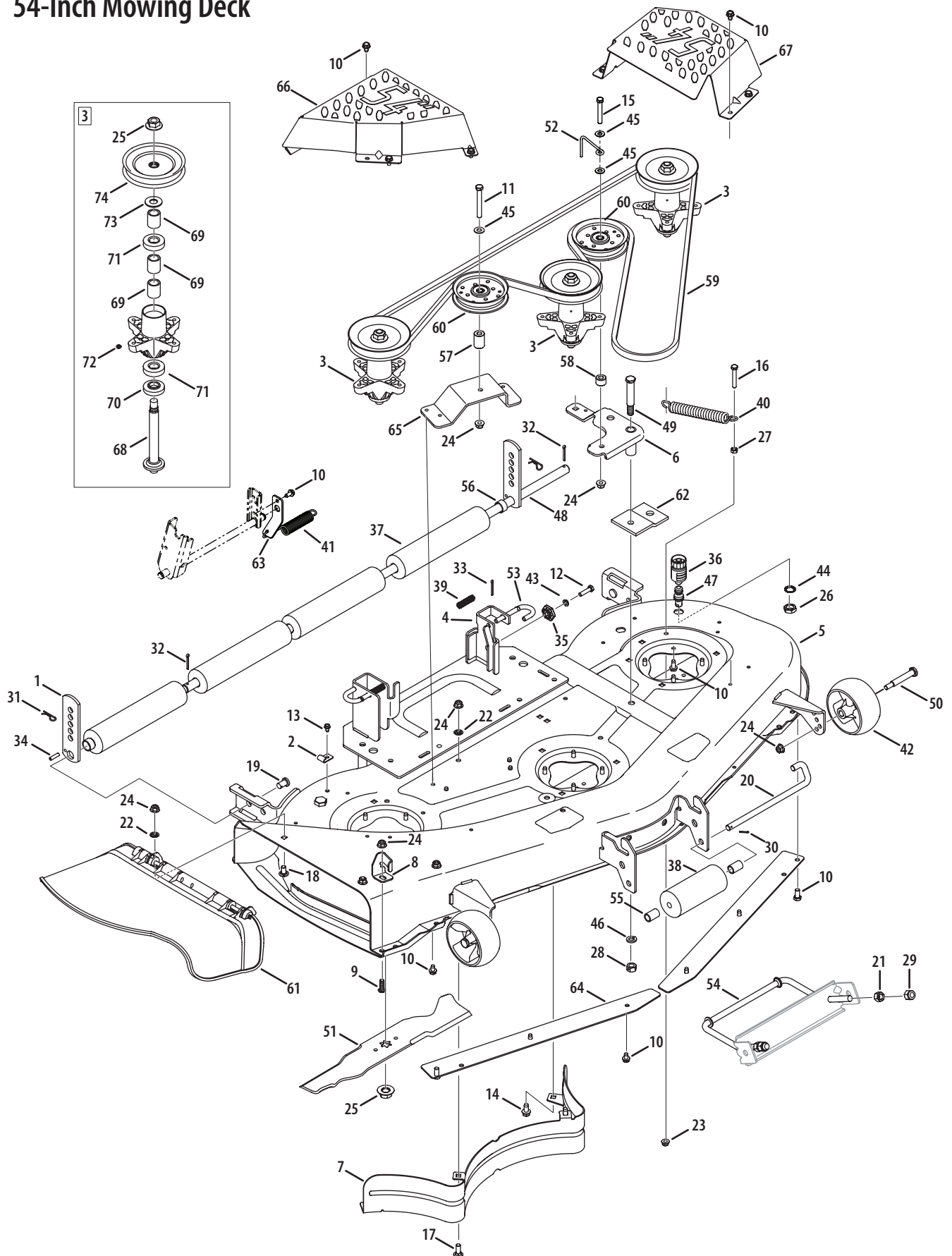
Pedal Assembly



Ref.	Part Number	Description
1	647-0049A-0637	Control Assembly, Hydro
2	647-04100-0637	Control Assembly, Brake
3	710-04484	Screw, Self-tapping, 5/16-18, 0.75
4	710-1260A	Screw, Self-tapping, 5/16-18, 0.75
5	711-04159B	Pin, 3/8-16, 3/8 x 2.68
6	712-04065	Nut, Nylon Lock, 3/8-16
7	712-3004A	Nut, Flange Lock, 5/16-18, Gr5
8	914-0104	Pin, Cotter, .072 Dia. x 1.13 Lg
9	914-0111	Pin, Cotter, 3/32, 1.0
10	719-0584B-0637	Pedal, Hydro Control
11	732-0335	Spring, Compression, .405 x 1.17
12	732-0955	Spring, Extension, .50 OD x 1.41 Lg
13	732-0963	Spring, Extension, .50 Dia x 6.37 Lg
14	735-3049A	Pad, Brake, Control

Ref.	Part Number	Description
15	936-0119	Washer, Lock, 5/16
16	736-0187	Washer, Flat .64 x 1.24 x .06
17	736-0262	Washer, Flat, .385 x .870 x .092
18	938-0155	Shoulder, Screw .437
19	938-0380	Shoulder, Screw 3/8-16
20	941-0225	Bearing, Hex Flange
21	741-3065B	Bearing, Hex Flange, .628 ID, Split
22	747-04093A	Rod, Control, Brake Lock
23	747-04096	Rod, Control, Cruise
24	747-04641A-0637	Pedal, Brake
25	748-04039C	Latch, Cruise
26	783-04612-0637	Bracket, Support, Steering
27	783-0663E	Bracket, Lockout, Hydro

54-Inch Mowing Deck

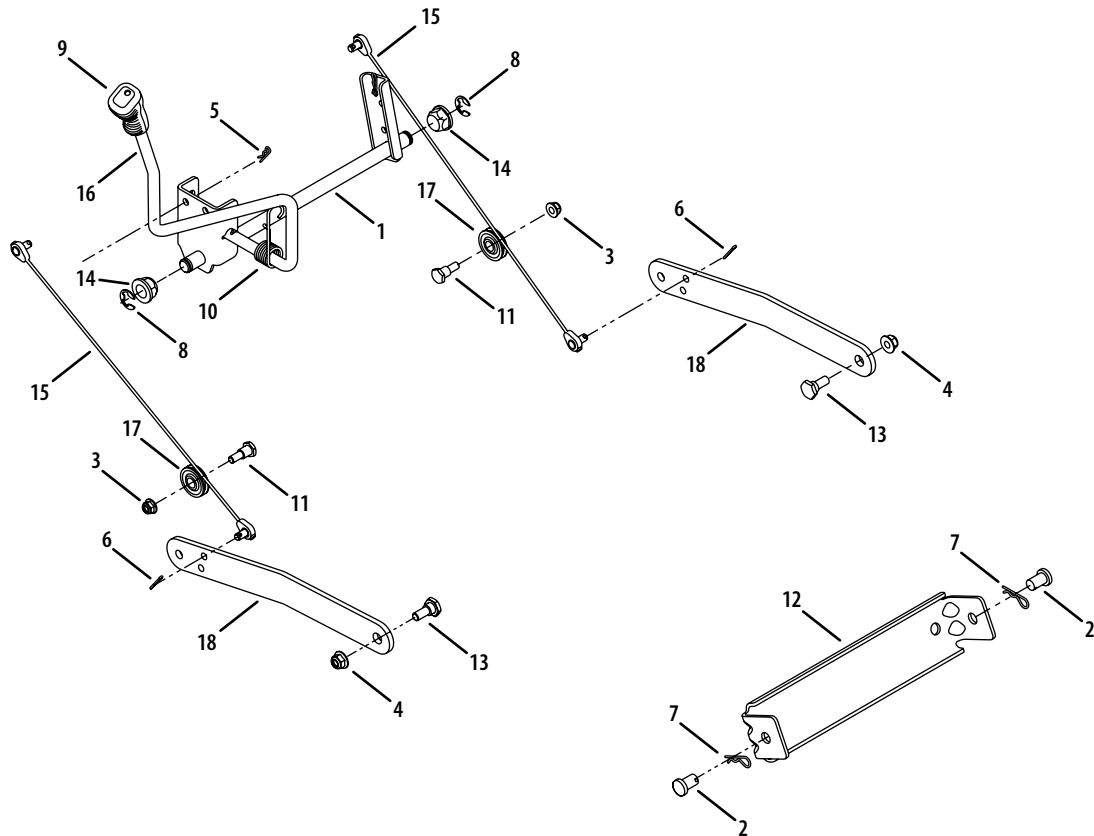


54-Inch Mowing Deck

Ref.	Part Number	Description
1	12650-0637	Bracket, Adjustment, Height
2	96606	Bracket, Hook, Retainer
3	918-0671B	Spindle Assembly, Pulley, 5.39 Dia.
4	683-0254B-4021	Bracket Assembly, Deck, Hanger LH
5	683-04483-4021	Deck Shell Assembly, 54"
6	683-0459-0637	Idler Assembly, 54"
7	703-2093-0637	Baffle
8	703-3279-4021	Stop Assembly, Chute
9	710-04095	Hex Screw, 3/8-16, 1.00
10	710-04484	Screw, Self-tapping, 5/16-18, 7.50
11	710-0521	Hex Screw, 3/8-16, 3.00
12	710-0528	Hex Screw, 5/16-18, 1.25, Gr5,
13	710-0599	Screw, Hex, 1/4-20, 0.500
14	710-0623	Screw, Self-tapping, 3/8-16, 7.50
15	710-0859	Screw, Self-tapping, 3/8-16, 2.50
16	710-3103	Screw, Self-tapping, 5/16-18, 2.000
17	710-3168	Bolt, Carriage, 3/8-16 x 1.0
18	710-3178	Short Neck Carriage Bolt
19	911-0332	Pin, Clevis, .50 Dia x .78
20	711-1737	Pin, Roller, .5" Dia x 10.06 .
21	912-0206	Nut, Hex Lock, 1/2-13
22	712-0229	Push Nut, 3/8
23	712-04063	Nut, Flange Lock, 5/16-18, Gr5
24	712-04065	Nut, Flange Lock, 3/8-16
25	712-0417A	Nut, Hex Flange, 5/8-18
26	912-0641	Hex Nut, M-16 x 1.5
27	912-3010	Nut, Hex, 5/16-18, Gr5
28	712-3022	Nut, Hex Lock, 1/2-13
29	712-3083	Nut, Hex Lock, 1/2-13
30	914-0111	Pin, Cotter, 3/32 x 1.00
31	914-0145	Pin, Click, .092 x 1.64
32	714-0162	Pin, Click, 5/32 x 1.25
33	914-0470	Pin, Cotter, 1/8 x 1.25
34	715-0108	Pin, Sprg, 1/4 Dia x 1.00
35	917-04074	Adjustment, Deck, Gear
36	921-04041	Hose Coupler
37	731-0335	Roller, Deck

Ref.	Part Number	Description
38	731-05679	Front Roller
39	932-0306A	Spring, Compression, .531 x 1.75
40	732-0459C	Spring, Extension, .94 Dia x 6.74
41	732-0971	Spring, Extension, Deck Lift Assist
42	734-04155	Deck Wheel, 5" Dia.
43	936-0119	Washer, Lock, 5/16, Regular Duty
44	736-0225	Lock Washer, 5/8
45	936-0300	Flat Washer, .406 x .875 x .059
46	936-0921	Washer, Lock, 1/2 , Regular Duty
47	737-04003D	Water Port
48	738-0295	Shoulder Screw, .750 x .47 x .12
49	738-1229A	Shoulder Screw, 5/8 Dia x 2.50
50	938-3056	Shoulder Screw, 1/2 Dia x 2.50
51	942-0677B	Blade, 18.50"
52	747-04938	Belt Keeper Rod
53	747-1116	Deck Release Handle Rod, .375 Dia
54	747-1324	Adjustable Front Deck Rod
55	950-0151	Spacer, .550 ID x .755 OD x 1.1
56	950-0212	Spacer, .82 ID x 1.00 OD x .53
57	750-04597	Spacer, .380 x .90 x 1.313
58	750-0933	Spacer, .385 x .88 x .64
59	954-0642	Belt, V-Type, B Section
60	756-04129	Pulley, Idler, 4.25 Dia.
61	631-04070A	Deflector Assembly, Chute
62	783-04013A-0637	Pulley Stabilizer Bracket
63	783-04462	Lift Bracket
64	783-04690B-0637	Skirt, Deck
65	783-04726-0637	Bracket, Stationary Idler
66	783-1470A-4021	Cover, Spindle RH
67	783-1471-4021	Cover, Spindle LH
68	738-1197	Shaft, Spindle, 6.95
69	750-1000	Spacer, .800 x 1.10 x 1.322
70	750-1349A	Spacer, 79 x 1.84 x .55
71	941-0919	Ball Bearing, .787 x 1.85 x .551
72	937-3000	Lube Fitting, 3/16
73	748-0160A	Spacer, .790 x 1.25 x .175
74	756-04216	Pulley, 5.39"

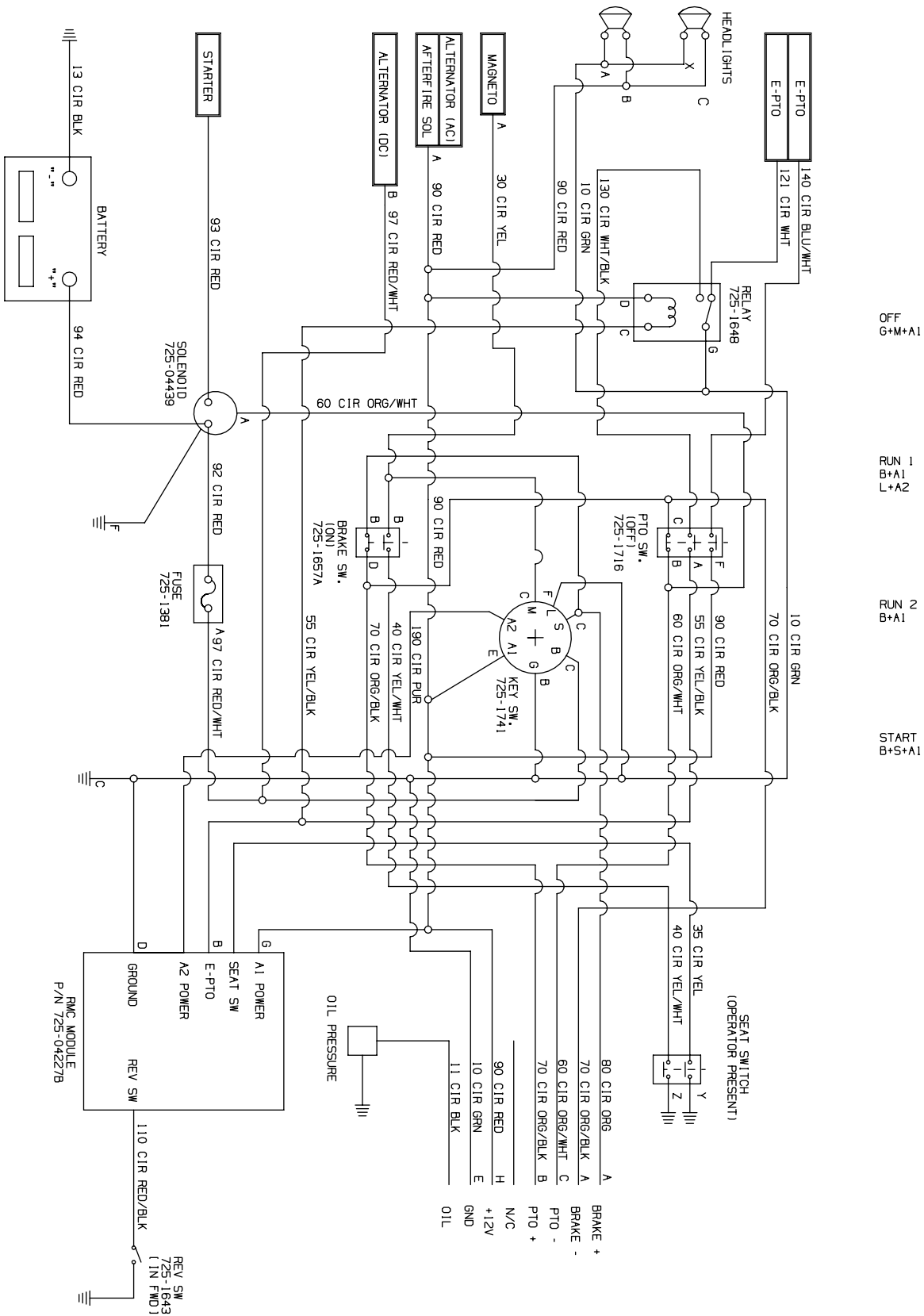
Lift Assembly



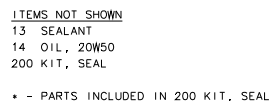
Ref.	Part Number	Description
1	683-04301-0637	Shaft Assembly, Lift (54" Deck)
2	911-0332	Pin, Clevis, .50 Dia x .78 Lg
3	712-04063	Nut, Nylon Lock, 5/16-18, Gr5
4	712-04065	Nut, Nylon Lock, 3/8-16
5	914-0104	Pin, Cotter, .072 Dia. x 1.13 Lg
6	914-0111	Pin, Cotter, 3/32, 1.0
7	914-04023	Pin, Click, .092 x 1.64 Lg
8	716-0106A	E-ring, .625 Dia. Shaft
9	720-0311	Grip, Handle

Ref.	Part Number	Description
10	732-0874	Spring, Torsion
11	738-0138A	Screw, Hex Cap, 5/16-18x.620 Gr2
12	783-0720C-0637	Bracket, Deck
13	938-0380	Shldr. Screw, 3/8-16
14	941-0225	Bearing, Hex Flange
15	746-0968	Cable, Lift, 16.16 Lg
16	747-04447	Handle, Lift
17	756-1154	Pulley, Roller
18	783-05546-0637	Arm, Lift

Electrical Schematic



Hydrostatic Transmission



ITEM	COMPONENT	DESCRIPTION	QTY	ITEM	COMPONENT	DESCRIPTION	QTY
1	71629	KIT, HOUSING, MAIN	1	171	52582	ROTOR, BRAKE	1
		HOUSING, MAIN	1	172	44134	PLATE, PUCK	1
		PIN, STANDARD HEADLESS	2	175	44433	BOLT, HEX HEAD 1/4-20 X 1 W/PATCH	1
		BUSHING, .624 X .719 X .562	1	176	51146	BOLT, HEX HEAD 1/4-20 X 2 W/PATCH	1
		BUSHING, .865 X .985 X .790	1	177	44127	PIN, BRK .31 X .73 PLATED	2
		BEARING, FLANGE 1.0 X 1.376 X .99	1	178	50919	SPRING, COMP BRAKE ANTI-Drag	1
2	71630	KIT, HOUSING, SIDE	1	179	50911	ARM, BRAKE	1
		HOUSING, SIDE	1	181	44142	NUT, CASTLE 5/16-24 PL	1
		BUSHING, .624 X .729 X .562	1	182	44101	PIN, COTTER 3/32 X 3/4	1
		BUSHING, .865 X .985 X .790	1	183	23711	SPACER, .26 X .57 X .87	1
		BEARING, FLANGE 1.0 X 1.376 X .99	1	184	44130	WASHER, .27 X .88 X .12	1
4	9005110-5600	PLUG 9/16-18 (METAL)	1	185	50884	SPRING, BRAKE ARM BIAS	1
7	51190	HFHCS 1/4-20 X 1.25	17	190	51687	CAP, BARBED	1
10	44761	SEAL, LIP .625 X 1.0	1	191	52474	HOSE, .28 X .15 X 10.00	1
12	52558	ASSEMBLY, FITTING, METAL	1	196	52922	FITTING, BARBED	1
13	50928	GASKET MATERIAL (LOCTITE 5900)	1	200	71632	KIT, SEAL	1
14		OIL, 20W50	.739 gal	006		PIN, STANDARD HEADLESS	2
22	51448	PLATE, BYPASS	1	(010)		SEAL, LIP .625 X 1.0	1
23	52114	FILTER, OIL	1	(026)		SEAL, PLUG 1.250 X .250	2
26	52162	SEAL, PLUG 1.250 X .250	2	(030)		SEAL, LIP .375 X .75 X .25	1
27	52137	HFHCS 3/8-16 X 1.5 (PATCH)	3	(031)		RING, RET .375 EXTERNAL	1
30	51626	SEAL, LIP .375 X .75 X .25	1	(033)		RING, RET .750 INTERNAL	1
31	51628	RING, RETAINING .375 EXTERNAL	1	(035)		RING, RET .375 EXTERNAL	1
32	52136	ROD, BYPASS	1	(041)		SEAL, LIP 18 X 32 X 7	1
33	51627	RING, RETAINING .750 INTERNAL	1	(046)		TWHCS 5/16-24 X 1.00 (PATCH)	1
34	51910	ARM, BYPASS	1	054		RING, RET WIRE .561 ID	1
35	51630	RING, RETAINING .375 EXTERNAL	1	(056)		SEAL, LIP 17 X 40 X 7	1
40	51048	TRUNNION, SWASHPLATE	1	(057)		RING, RET 1.575 INTERNAL	1
41	51140	SEAL, LIP 18 X 32 X 7	1	(071)		RING, RET .625 EXTERNAL	1
45	44130	WASHER, .24 X .88 X .06	1	(090)		RING, RET 2.06 INTERNAL	2
46	51812	TWHCS 5.16-24 X 1.00 (PATCH)	1	(096)		SEAL, LIP 25 X 52 X 10 TC (GRAY)	2
55	50951	WASHER, 1.23 X 1.56 X .04	1	(130)		TUBE, CONNECTING	2
56	51161	SEAL, LIP 17 X 40 X 7	1	132		O-RING - 137, .103 X 2.050	1
57	50329	RING, RETAINING 1.575 INTERNAL	1	(155)		RING, SPIRAL RET .875	2
60	51462	BEARING, THRUST	1	201	71639	KIT, CENTER SECTION, LH, CHRG	1
64	70735	ASSEMBLY, CYLINDER BLOCK, 16cc	1	020	52910	CENTER SECTION, LH, CHRG	1
65	50551	BEARING, THRUST BALL 30 X 52 X 13	1	(022)	51448	PLATE, BYPASS	1
69	70723	ASSEMBLY, BLOCK 7 PISTON	1	024	50564	CHECK PLUG	1
70	44371	WASHER, .63 X 1.0 X .05	1	025	50564	CHECK PLUG	1
71	44145	RING, RETAINING .625 EXTERNAL	1	(026)	52162	SEAL, PLUG 1.250 X .250	2
72	52109	GEAR, 14T	1	(027)	52137	HFHCS 3/8-16X1.5 (PATCH)	3
73	52585	SHAFT, MOTOR	1	028	2003071	BRG, JRNL	1
74	51069	WASHER, .72 X 1.16 X .04	1	135	9001214-4400	BALL, STEEL 7/16"	1
80	50132	WASHER, .5 X 1.0 X .03	2	136	51157	SPRING, RELIEF .42 X .75	1
81	52110	GEAR, 45T	1	137	51805	PIN, SPRING .125 X .875	1
82	52583	GEAR, 11T	1	202	71436	KIT, CHARGE RELIEF	1
83	51083	PIN, JACKSHAFT	1	(135)	9001214-4400	BALL, STEEL 7/16"	1
90	50859	RING, RETAINING 2.06 INTERNAL	2	(136)	51157	SPRING, RELIEF .42 X .75	1
91	52577	GEAR, 60T	1	(137)	51805	PIN, SPRING .125 X .875	1
92	51939	SPACER, 1.04 X 1.65 X .22	2	203	71411	KIT, CHARGE	1
94	52564	SHAFT, AXLE 1.00 X 13.37, DD	2	131	50273	GERORTER ASSEMBLY (1.9cc/REV)	1
95	50771	BEARING, BALL 1.0 X 52 X 15	2	132	52250	O-RING - 137, .103 X 2.050	1
96	50772	SEAL, LIP 25 X 52 X 10 TC (GRAY)	2	133	52688	COVER, CHARGE PUMP	1
105	50752	HFHCS 1/4-20 X .75	3	134	52768	SCREW, PAN HEAD 1/4-20 X .75	2
106	52247	GUARD, FILTER, LH	1	207	71713	KIT, FAN/PULLEY	1
120	52955	FAN 7.0 (10 BLADE)	1	(120)	52955	FAN, 7.0 IN 10 BLADE	1
121	51585	PULLEY	1	(121)	51585	PULLEY, 4.0 IN	1
122	51244	HEX LOCK NUT 1/2-20 (NYLON INSERT)	1	(122)	51244	NUT, HEX LOCK 1/2-20 (NYLON INSERT)	1
123	51076	SCREW HEX 1/4-20 X .875	3	(123)	51076	SCREW, HEX WASHER 1/4-20 X .875	3
130	52157	TUBE, CONNECTING	2	210	71442	KIT, INPUT SHAFT	1
140	52527	SPACER, .320 X 1.005 X .179	1	052	52155	SHAFT, INPUT	1
141	52921	ASSEMBLY, RTN, NEUTRAL ARM	1	053	50315	BRG, BALL 17 X 40 X 12 OPEN 6203	1
142	51616	SHCS 5/16-24 X 1 PATCH	1	054	2000022	RING, RET WIRE .561 ID	1
146	51950	WASHER, .343 X 1.500 X .062	1	211	71827	KIT, RTN BIDIRECTIONAL	1
147	51605	SPRING, EXTENSION RTN - 44 LBS	1	044	52904	ARM, CONTROL	1
152	52599	GEAR, BEVEL 14T SPLINE ID	2	(046)	51812	SCREW 5/16-24 X 1.00 (PATCH)	1
153	52600	GEAR, BEVEL 10T	2	145	52914	ASSEMBLY, RTN BIDIRECTIONAL	1
154	52608	PIN, .499 X 1.20	2	212	70633	KIT, BRAKE-YOKE	1
155	52531	RING, SPIRAL RETAINING - 87	2	173	44138	BOLT, SQUARE HEAD	1
170	44132	PUCK, BRAKE	2	174	50879	BRAKE YOKE	1

NOTE: Include a HG- prefix when ordering replacement transmission parts (i.e. HG-70467).

[illegible]

[illegible]

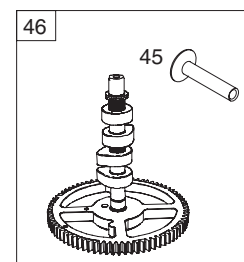
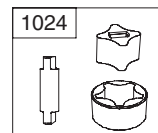
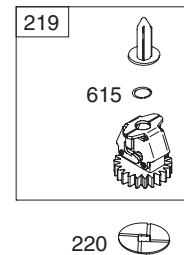
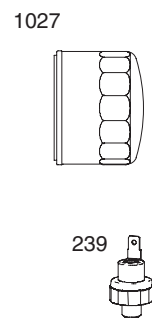
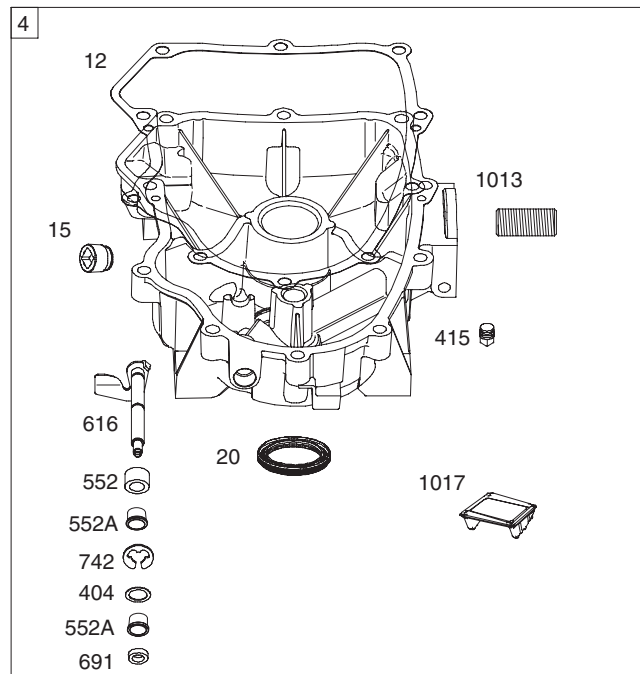
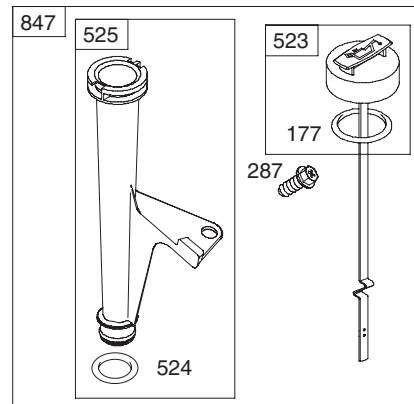
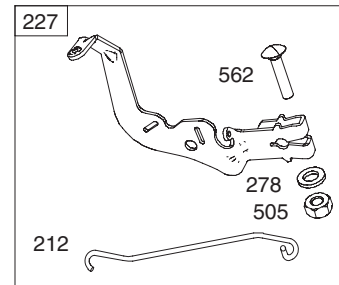
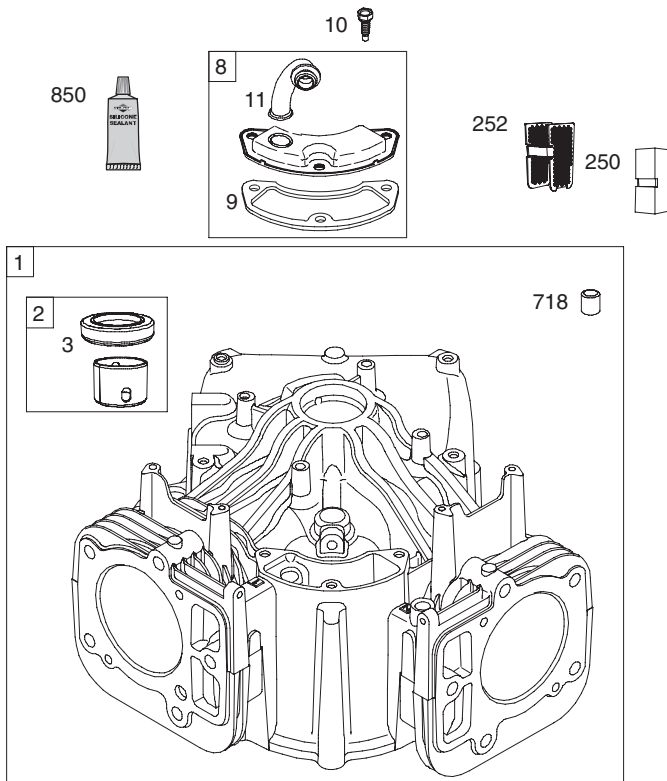
[illegible]

48 SHORT BLOCK

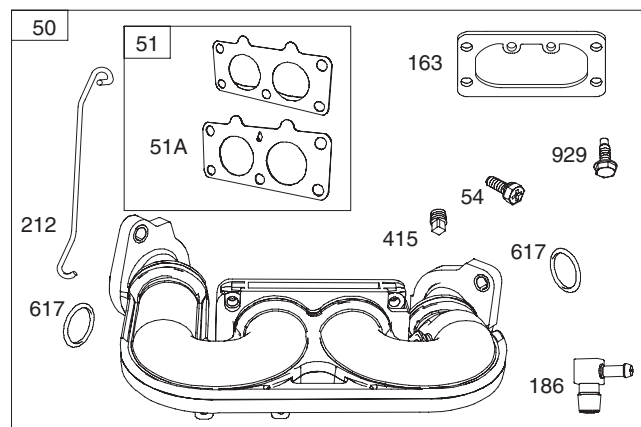
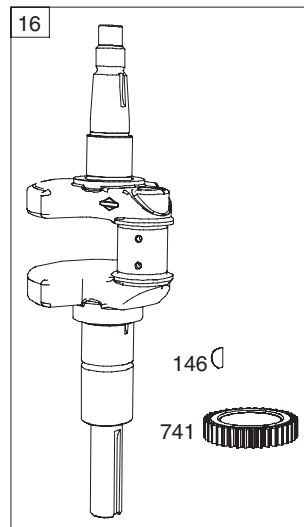
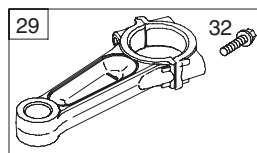
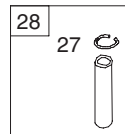
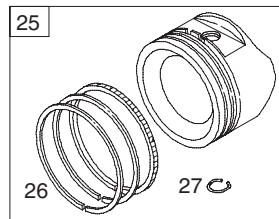
1058 OPERATOR'S MANUAL

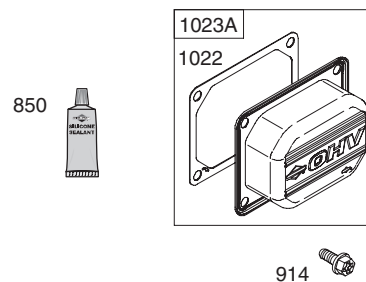
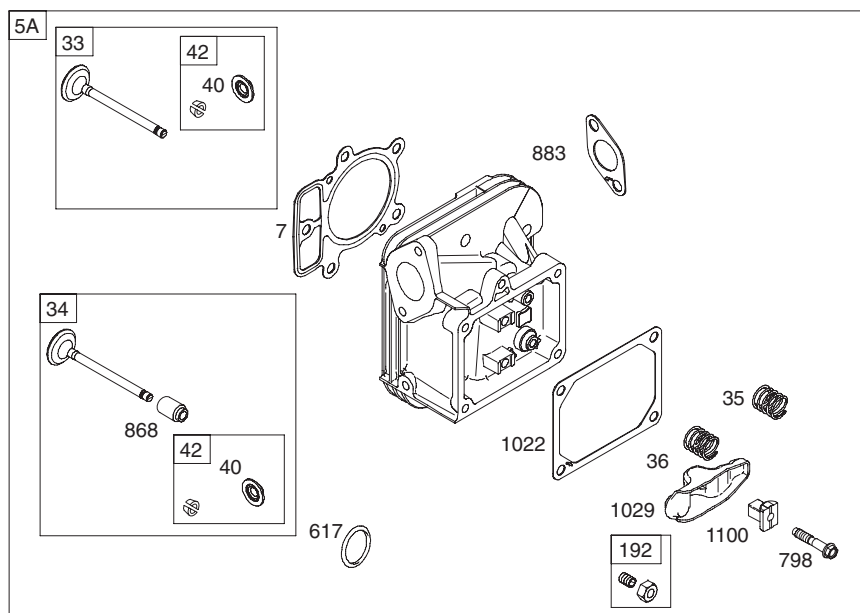
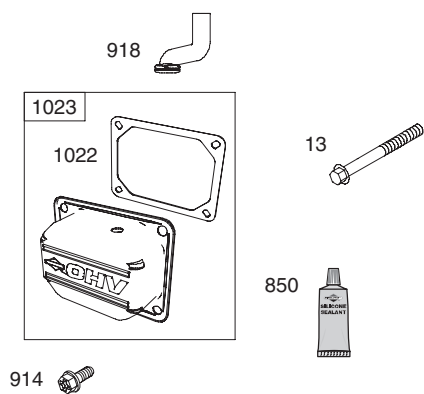
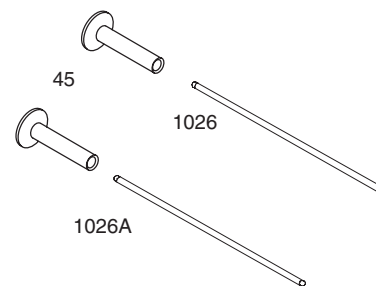
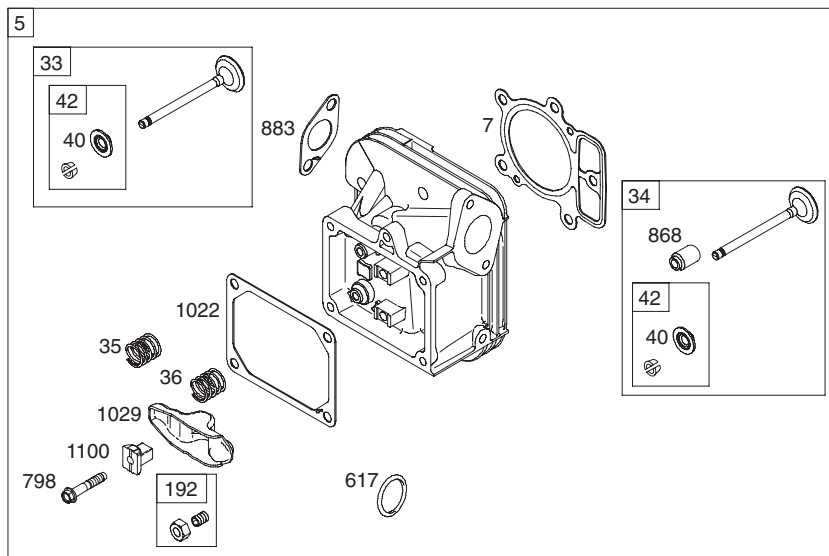
1329 REPLACEMENT ENGINE

1330 REPAIR MANUAL

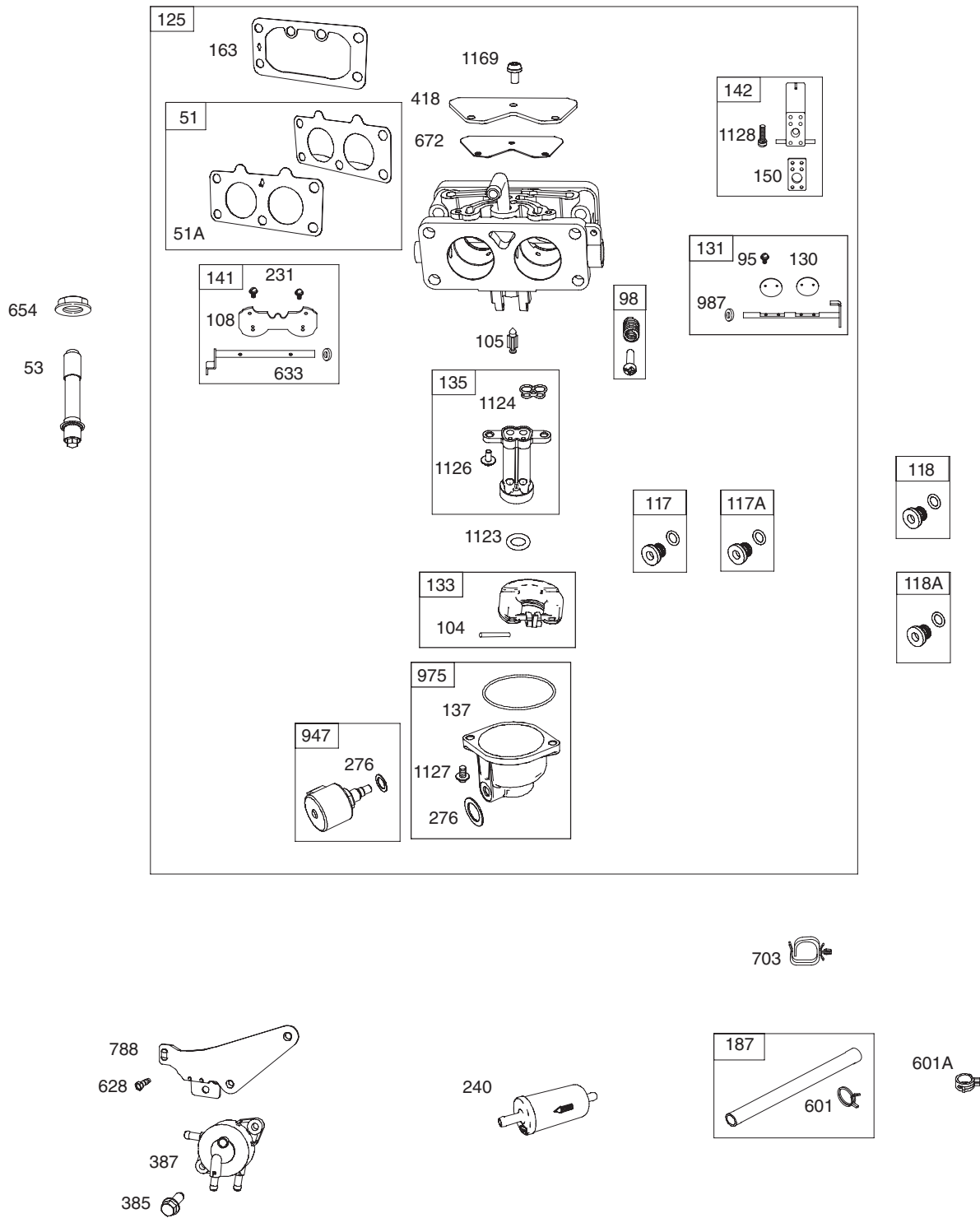


Briggs & Stratton 44M777-0721-B1

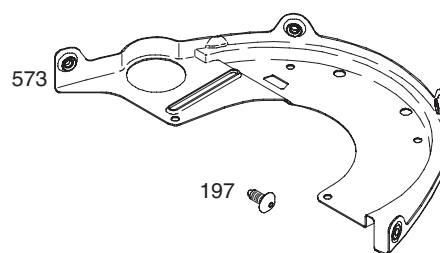
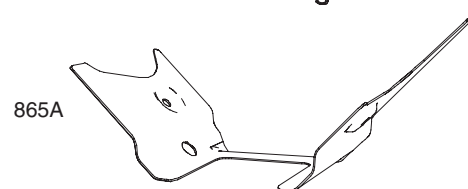
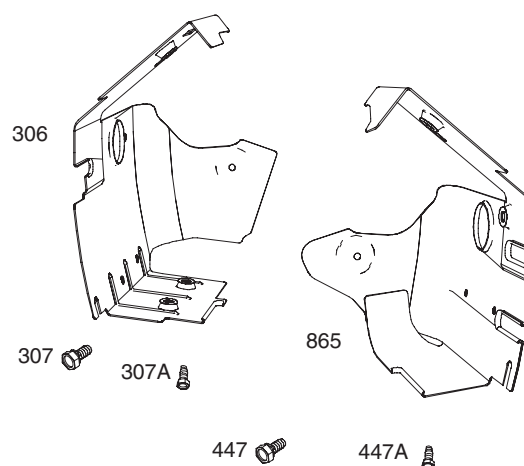
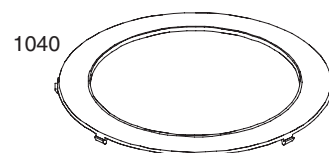
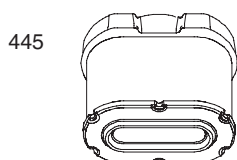
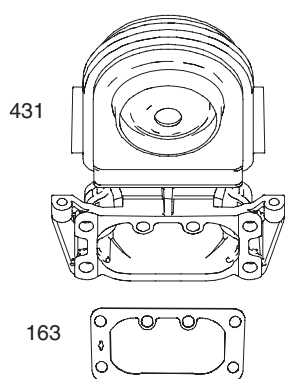
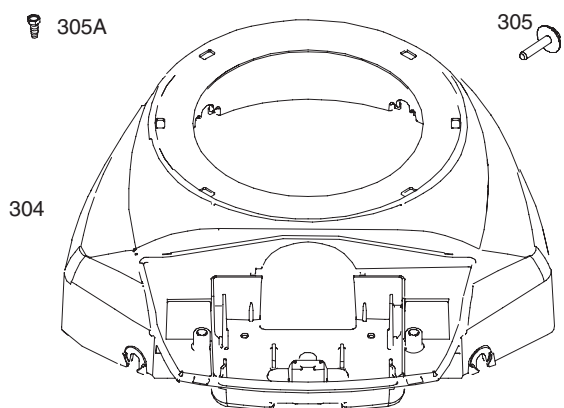
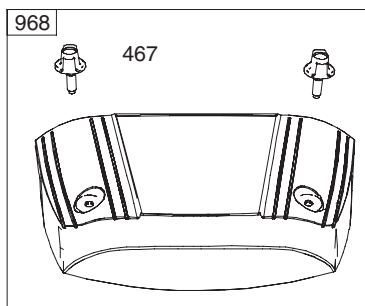




Briggs & Stratton 44M777-0721-B1

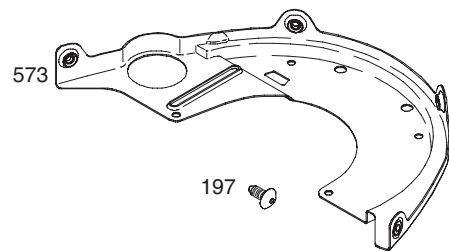
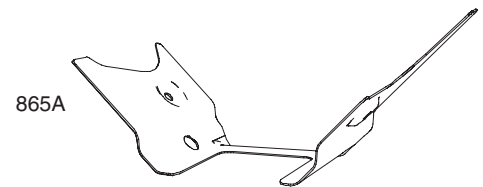
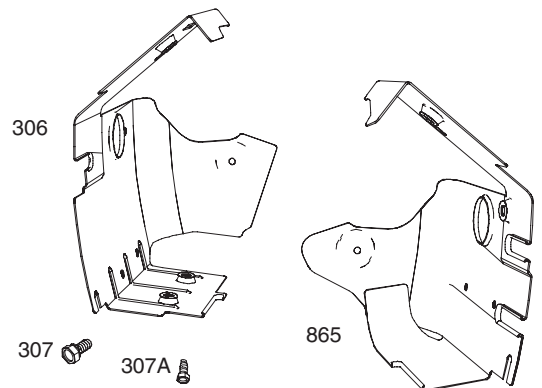
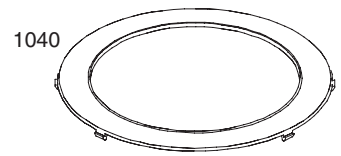
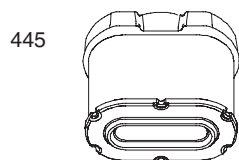
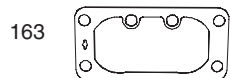
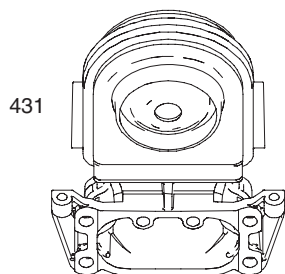
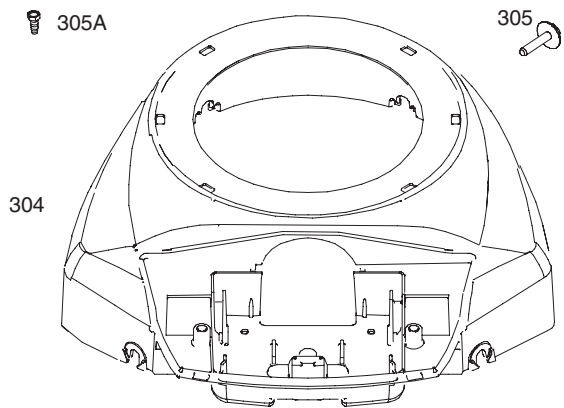
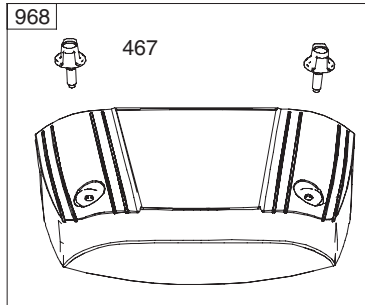


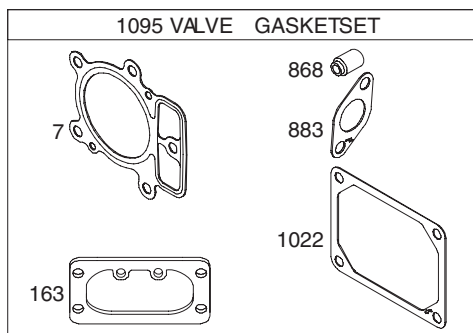
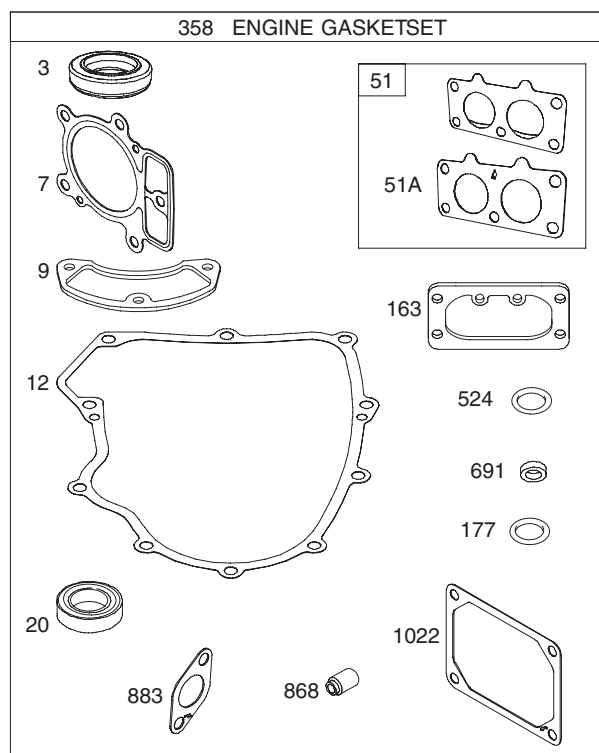
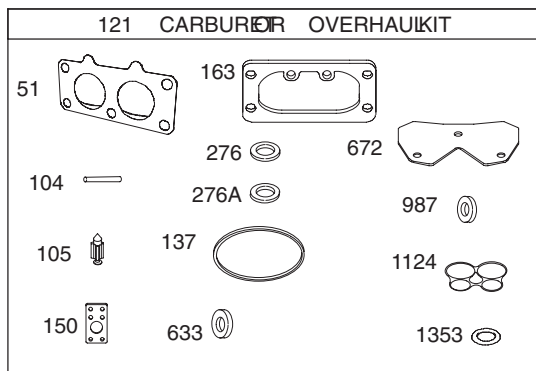
1036 EMISSIONSLABEL



Briggs & Stratton 44M777-0721-B1

1036 EMISSIONSLABEL





Briggs & Stratton 44M777-0721-B1

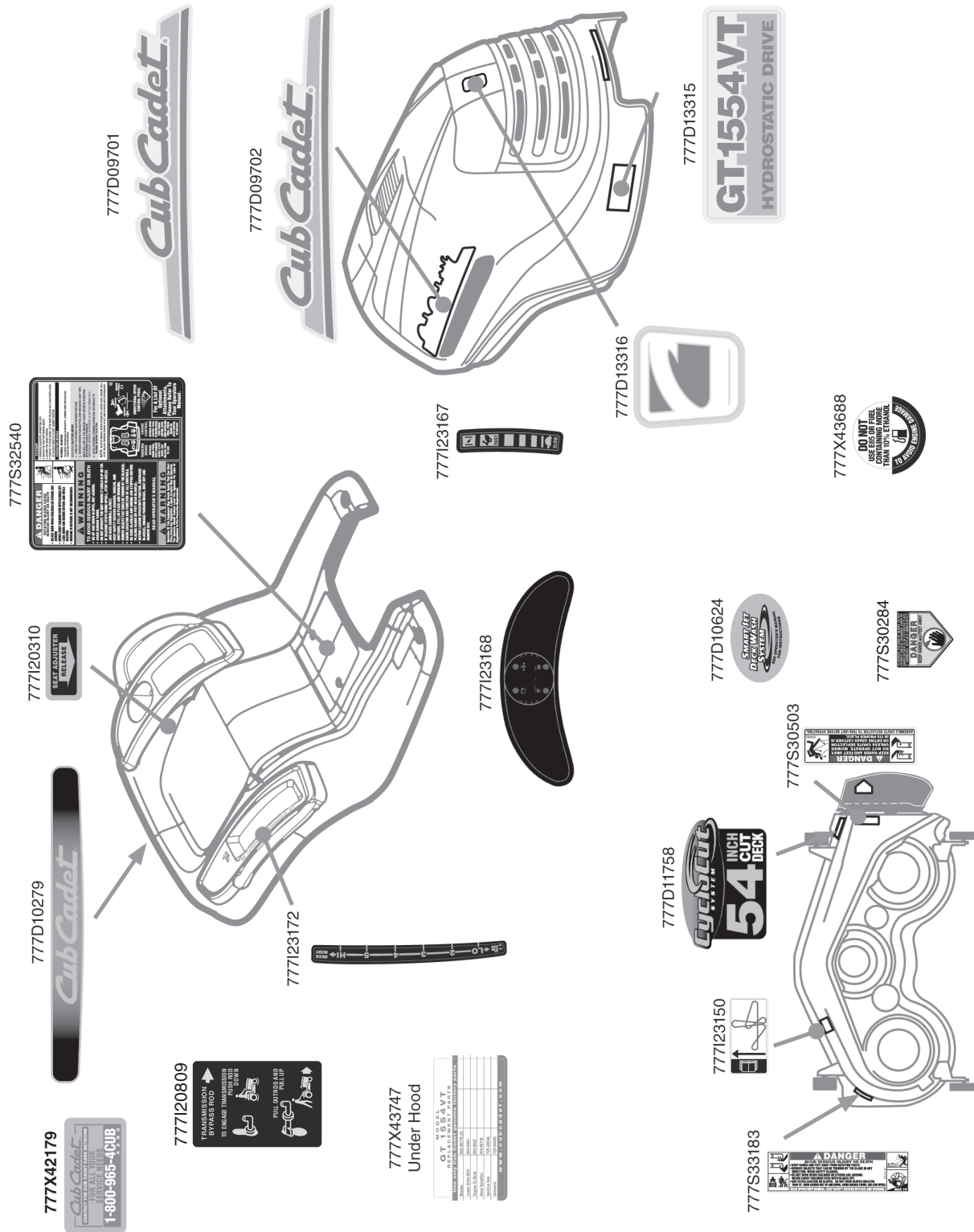
Ref.	Part Number	Description	Ref.	Part Number	Description
1	BS-793564	Cylinder Assembly	73	BS-494439	Screen-Rotating
2	BS-499585	Kit-Bushing/Seal (Magneto Side)	74	BS-698425	Screw (Rotating Screen)
3	BS-391086s	Seal-Oil (Magneto Side)	75	BS-691056	Washer (Flywheel)
4	BS-796230	Sump-Engine	95	BS-690718	Screw (Throttle Valve)
5	BS-796270	Head-Cylinder (Cylinder #1)	98	BS-699721	Kit-Idle Speed
5A	BS-796271	Head-Cylinder (Cylinder #2)	104	BS-694918	Pin-Float Hinge
7	BS-693997	Gasket-Cylinder Head	105	BS-698537	Valve-Float Needle
8	BS-792185	Breather Assembly	108	BS-699723	Valve-Choke
9	BS-690937	Gasket-Breather	117	BS-792296	Jet-Main (Standard) (Left Jet)
10	BS-697551	Screw (Breather Assembly)	117A	BS-842627	Jet-Main (Standard) (Right Jet)
11	BS-792184	Tube-Breather	118	BS-699457	Jet-Main (High Altitude) (Left Jet)
12	BS-697227	Gasket-Crankcase	118A	BS-699733	Jet-Main (High Altitude) (Right Jet)
13	BS-793988	Screw (Cylinder Head)	121	BS-792455	Kit-Carburetor Overhaul
15	BS-690946	Plug-Oil Drain	125	BS-796227	Carburetor (Primer System)
16	BS-796540	Crankshaft	130	BS-690993	Valve-Throttle
20	BS-795387	Seal-Oil (PTO Side)	131	BS-499805	Kit-Throttle Shaft
22	BS-694966	Screw (Crankcase Cover/Sump)	133	BS-699724	Float-Carburetor
23	BS-691053	Flywheel	135	BS-699729	Tube-Fuel Transfer
24	BS-222698s	Key-Flywheel	137	BS-690994	Gasket-Float Bowl
25	BS-793560	Piston Assembly (Standard)	141	BS-796228	Kit-Choke Shaft
25	BS-793563	Piston Assembly (.020" Oversize)	142	BS-699726	Nozzle-Carburetor
26	BS-793561	Ring Set (Standard)	146	BS-690979	Key-Timing
26	BS-792073	Ring Set (.020" Oversize)	150	BS-690995	Gasket-Nozzle
27	BS-690975	Lock-Piston Pin	163	BS-691001	Gasket-Air Cleaner
28	BS-696581	Pin-Piston	177	BS-691031	Seal-O Ring (Dipstick)
29	BS-796209	Rod-Connecting	186	BS-795985	Connector-Hose (Intake Manifold)
32	BS-690976	Screw (Connecting Rod)	187	BS-791766	Line-Fuel (Cut to Required Length)
33	BS-793557	Valve-Exhaust	188	BS-697551	Screw (Control Bracket)
34	BS-793556	Valve-Intake	192	BS-690083	Adjuster-Rocker Arm
35	BS-694865	Spring-Valve (Intake)	197	BS-697820	Screw (Back Plate)
36	BS-694865	Spring-Valve (Exhaust)	209	BS-796224	Spring-Governor (Yellow/Black)
40	BS-690964	Retainer-Valve	211	BS-796225	Spring-Governed Idle
42	BS-499586	Keeper-Valve	212	BS-695238	Link-Throttle
45	BS-690977	Tappet-Valve	216	BS-796229	Link-Choke
46	BS-792555	Gear-Cam	217	BS-695409	Spring-Choke Return
48	BS-698172	Short Block	219	BS-793338	Gear-Governor
50	BS-695241	Manifold-Intake	220	BS-690412	Washer (Governor Gear)
51	BS-795123	Gasket-Intake	221	BS-841026	Cup-Governor
51A	BS-690950	Gasket-Intake	222	BS-796226	Bracket-Control
53	BS-690951	Stud (Carburetor)	227	BS-796223	Lever-Governor Control
54	BS-699816	Screw (Intake Manifold)	239	BS-792028	Switch-Oil Pressure

Ref.	Part Number	Description	Ref.	Part Number	Description
240	BS-695666	Filter-Fuel	526	BS-691129	Screw (Regulator)
250	BS-690957	Retainer-Breather	544		Armature-Starter (Service with Starter Motor 497595, Reference 309)
252	BS-794389	Collector-Oil	552	BS-690552	Bushing-Governor Crank
265	BS-691024	Clamp-Casing	552A	BS-690553	Bushing-Governor Crank
267	BS-695134	Screw (Casing Clamp)	562	BS-690311	Screw (Governor Control Lever)
276	BS-695410	Washer-Sealing	573	BS-790444	Plate-Back
278	BS-792651	Washer (Governor Control Lever)	579	BS-691029	Nut (Starter Cable)
287	BS-691108	Screw (Dipstick Tube)	601	BS-791850	Clamp-Hose (Green)
304	BS-796678	Housing-Blower	601A	BS-691038	Clamp-Hose (Black)
305	BS-691005	Screw (Blower Housing)	615	BS-698290	Retainer-Governor Shaft
305A	BS-790690	Screw (Blower Housing to Intake Elbow)	616	BS-691045	Crank-Governor
306	BS-796541	Shield-Cylinder (Cylinder #2)	617	BS-697891	Seal-O Ring (Intake Manifold) (Red)
307	BS-691003	Screw (Cylinder Shield) (Short)	628	BS-697551	Screw (Fuel Pump Bracket)
307A	BS-697551	Screw (Cylinder Shield) (Long)	633	BS-699813	Seal-Choke/Throttle Shaft (Choke Shaft)
309	BS-497595	Motor-Starter	635	BS-66538s	Boot-Spark Plug
310	BS-690323	Screw (Starter Motor)	654	BS-690958	Nut (Carburetor)
311	BS-497608	Brush Set	668	BS-691215	Spacer (Rotating Screen)
332	BS-691059	Nut (Flywheel)	668A	BS-691500	Spacer (Rotating Screen)
333	BS-691060	Armature-Magneto	672	BS-690234	Gasket-Carburetor Plate
334	BS-691061	Screw (Magneto Armature)	691	BS-790574	Seal-Governor Shaft
337	BS-491055	Plug-Spark	697	BS-690372	Screw (Drive Cap)
358	BS-694012	Gasket Set-Engine	703	BS-691010	Clip
385	BS-697551	Screw (Fuel Pump)	718	BS-690959	Pin-Locating
387	BS-808656	Pump-Fuel	729	BS-694123	Clip-Wire
404	BS-690442	Washer (Governor Crank)	741	BS-690980	Gear-Timing
415	BS-690283	Plug (Oil Pressure Switch Hole)	742	BS-690328	Retainer-E Ring (Governor Crank)
418	BS-795912	Plate-Carburetor	750	BS-796208	Screw (Oil Pump Cover)
431	BS-792297	Elbow-Intake	783	BS-695708	Gear-Pinion
445	BS-792105	Filter-Air Cleaner Cartridge	788	BS-793145	Bracket-Fuel Pump
447	BS-691003	Screw (Air Guide Cover) (Short)	789	BS-696576	Harness-Wiring
447A	BS-697551	Screw (Air Guide Cover) (Long)	789A	BS-698330	Harness-Wiring
467	BS-790697	Knob-Air Cleaner	797	BS-693167	Nut (Brush Retainer)
474	BS-696457	Alternator	798	BS-697890	Screw (Rocker Arm)
501	BS-691188	Regulator	801	BS-691283	Cap-Drive
505	BS-691029	Nut (Governor Control Lever)	802	BS-691286	Cap-End
510	BS-696541	Drive-Starter	803		Housing-Starter (Service with Starter Motor BS-497595, Reference 309)
513	BS-692024	Clutch-Drive	847	BS-499602	Dipstick/Tube Assembly
523	BS-691036	Dipstick			
524	BS-691032	Seal-Dipstick Tube			
525	BS-691037	Tube-Dipstick			

Briggs & Stratton 44M777-0721-B1

Ref.	Part Number	Description
850	BS-100106	Sealant-Liquid (Liquid Sealant is Interchangeable with Rocker Cover Gasket and Breather Gasket)
851	BS-493880s	Terminal-Spark Plug
865	BS-691012	Cover-Air Guide (Cylinder #1)
865A	BS-792286	Cover-Air Guide (Valley)
868	BS-690968	Seal-Valve
877	BS-790544	Wire/Connector-Alternator
883	BS-690970	Gasket-Exhaust
914	BS-691127	Screw (Rocker Cover)
918	BS-793147	Hose-Vacuum
943	BS-796222	Seal-O Ring (Oil Pump Cover)
947	BS-841546	Solenoid-Fuel
965	BS-796221	Cover-Oil Pump
968	BS-795120	Cover-Air Cleaner
975	BS-793592	Bowl-Float
987	BS-691000	Seal-Throttle Shaft
1005	BS-791236	Fan-Flywheel
1013	BS-690954	Nipple-Oil Filter
1017	BS-796124	Screen-Oil Pump
1022	BS-690971	Gasket-Rocker Cover
1023	BS-793146	Cover-Rocker (Cylinder #1)
1023A	BS-499600	Cover-Rocker (Cylinder #2)
1024	BS-796220	Pump-Oil
1026	BS-690981	Rod-Push (Steel)

Ref.	Part Number	Description
1026A	BS-690982	Rod-Push (Aluminum)
1027	BS-795890	Filter-Oil
1029	BS-690972	Arm-Rocker
1036		Label-Emissions (Available from a Briggs & Stratton Authorized Dealer)
1040	BS-791237	Plate-Trim
1051	BS-691265	Ring-Retaining (Starter Drive)
1054	BS-280275	Tie-Cable
1059	BS-698516	Kit-Screw/Washer (Alternator)
1070	BS-791680	Screw (Flywheel Fan)
1090	BS-691293	Retainer-Brush
1095	BS-694013	Gasket Set-Valve
1100	BS-791959	Pivot-Rocker Arm
1119	BS-691183	Screw (Alternator)
1123	BS-841653	Seal-O Ring (Solenoid Retainer)
1124	BS-841653	Seal-O Ring (Fuel Transfer Tube)
1126	BS-690991	Screw (Fuel Transfer Tube)
1127	BS-695407	Screw (Fuel Bowl)
1128	BS-690990	Screw (Carburetor Nozzle)
1169	BS-690990	Screw (Carburetor Cover Plate)
1329	44Q777-0037-G1	Replacement Engine (Replacement engine listed is not available)





To order replacement parts, call a Customer Support Representative at (800) 965-4CUB.
Locate your nearest Cub Cadet dealer at (877) 282-8684
or visit www.cubcadet.com to find the nearest Cub Cadet dealer in your area.

CUB CADET LLC, P.O. BOX 361131 CLEVELAND, OHIO 44136-0019
